

US 12 Bypass South Section Public Information Meeting

February 6, 2013



USH 12 Sauk County



US 12 South Section Preliminary Design Overview

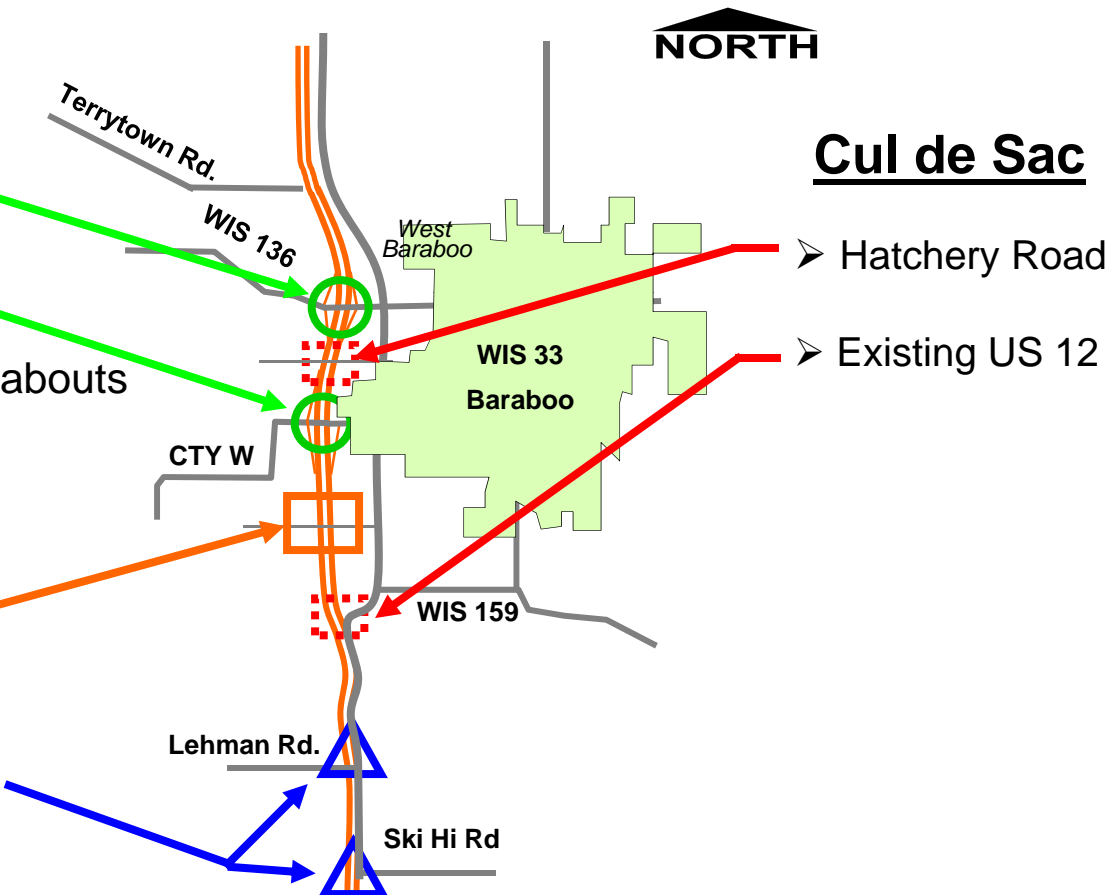
Interchanges

- US 12 Over WIS 136
- US 12 Over CTH W
- All Interchanges utilize Roundabouts

Cross Roads

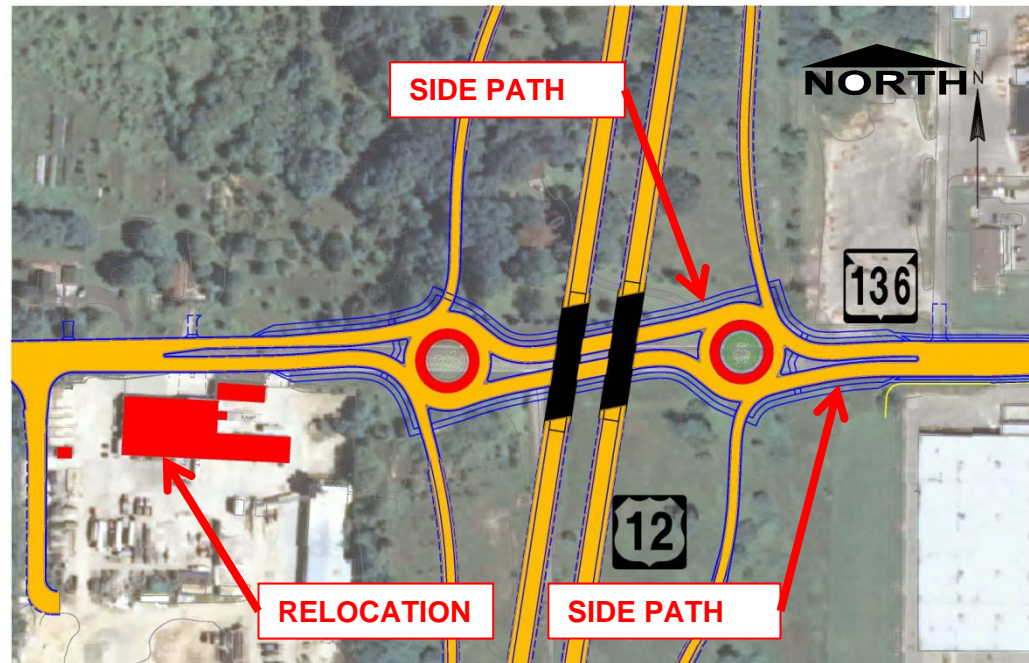
- Gasser Road Over US 12

At-Grade Intersections



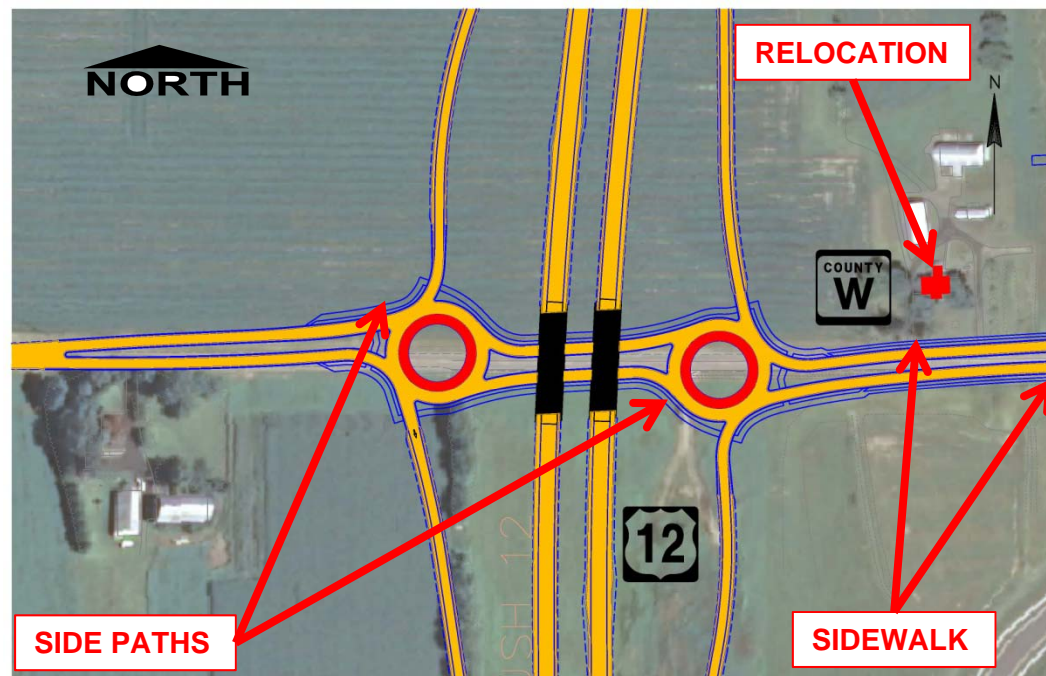
WIS 136 Interchange

- WIS 136 passes under US 12.
- Interchange includes roundabouts at ends of ramps.
- Roundabouts will be dual lane to match existing 4-lane section to the east.
- Provides 10' side paths through roundabouts.



CTH W Interchange

- CTH W passes under US 12.
- Interchange includes single lane roundabouts at ends of ramps.
- Roundabouts are expandable to dual lane.
- Provides 10' side paths through roundabouts.
- Provides sidewalk on north and south side (at request of the City of Baraboo).
- 2-lane section matches proposed CTH W/South Blvd. project east of existing US 12.



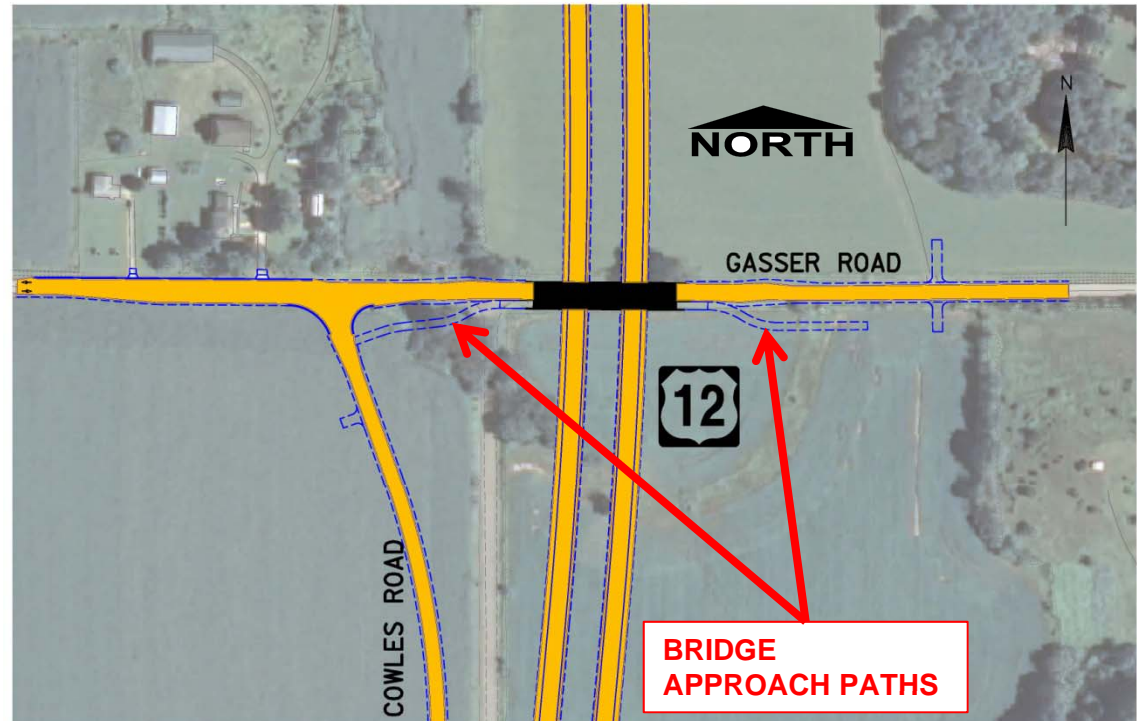
February 6, 2013

US 12 Sauk County



Gasser Road

- Gasser Road passes over US 12.
- 22' roadway with 4' paved shoulders
- 26' wide driving surface on bridge.
- 12' path separated by barrier on south side of bridge
- 12' paths leading up to bridge to accommodate snowmobiles.

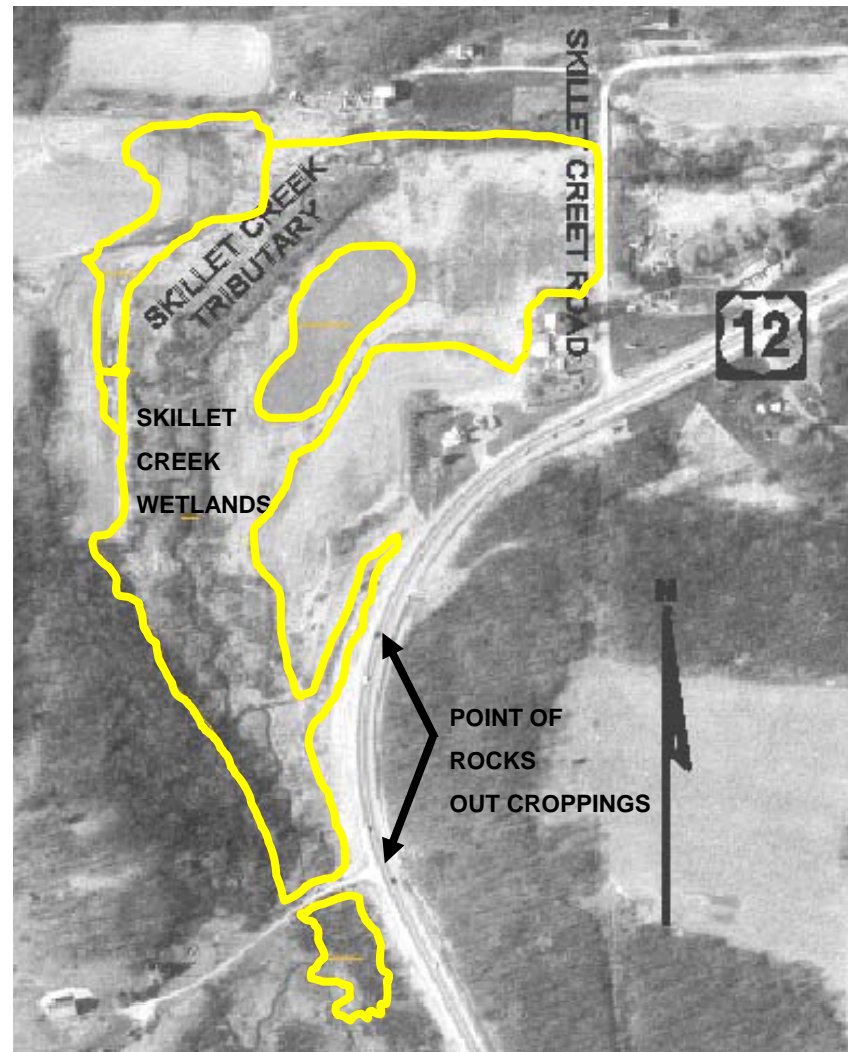


Point of Rocks/Skillet Creek Tributary Area

- FEIS Preferred Alignment cut through Point of Rocks Outcroppings.
- Meetings were held with the Geological Community and Agencies to discuss significance of Point of Rocks

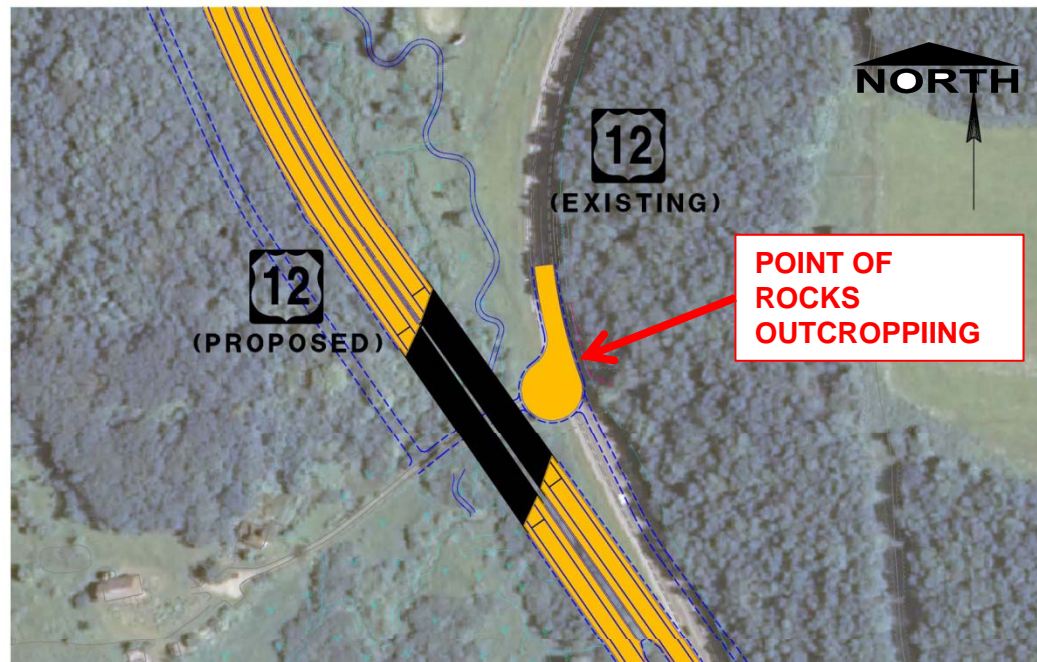
Environmental Constraints

- Point of Rocks outcroppings
 - Nationally recognized as a teaching tool for geologists
 - On National Register of Historic Places
- Skillet Creek Tributary & wetlands
 - High quality wetlands
 - Floodplain
- Within boundary of Baraboo Range National Natural Landmark



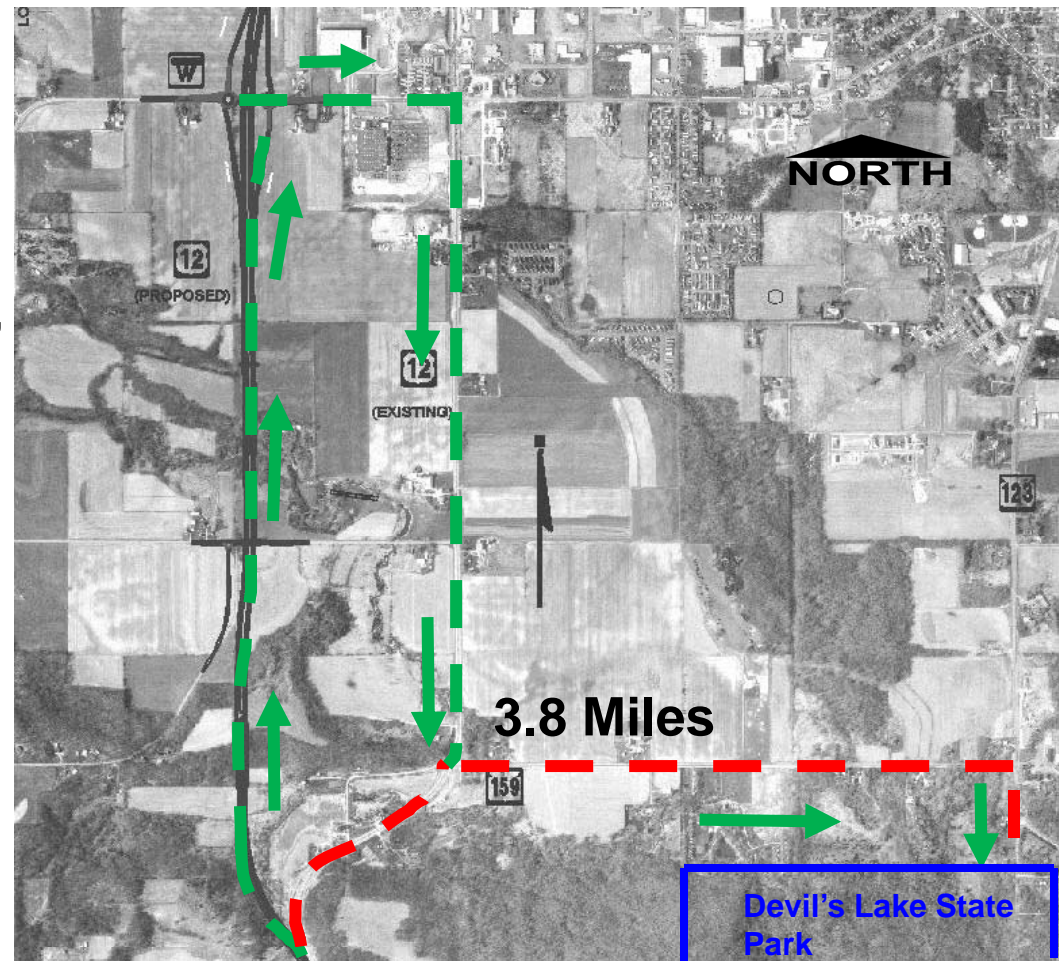
US 12 at Point of Rocks

- Cul de Sac at Point of Rocks Outcropping.
- Narrow median with barrier on US 12 through Skillet Creek Tributary area.
- Safe option with minimized environmental impacts.
- CTH W interchange & existing US 12/CTH W intersection will handle future traffic resulting from cul de sac.
- Main entrance into Devil's Lake Park will be CTH W.



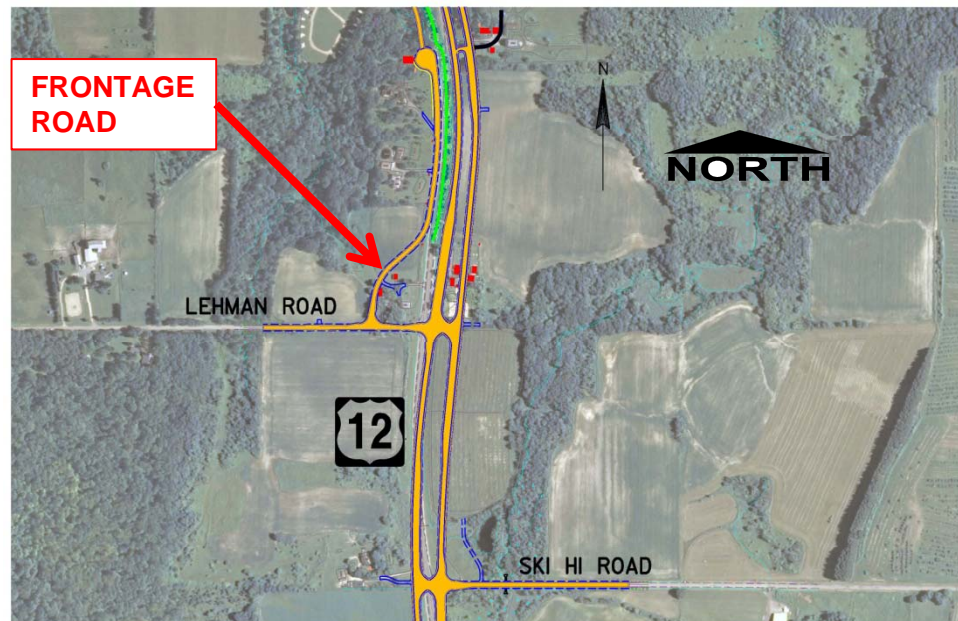
Access to Devil's Lake

- CTH W will be main entrance to Devil's Lake State Park.
- Project will include wayfinding signs on US 12, CTH W, existing US 12 & WIS 159.
- Will add 3.8 additional miles to visitors coming from the south.
- WisDOT recognizes that Ski Hi Road will see additional traffic.



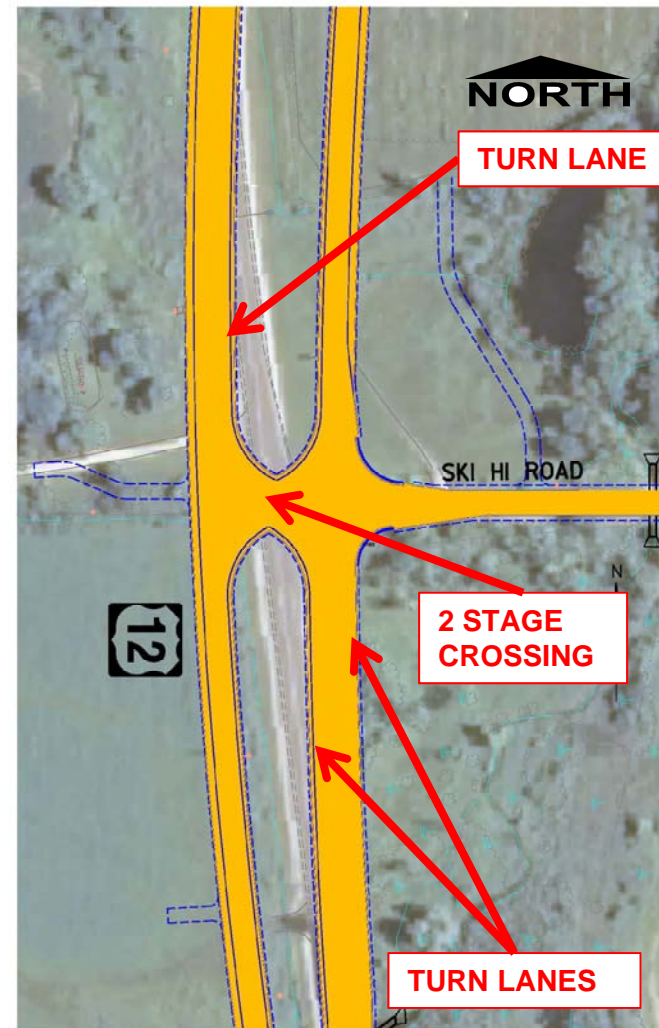
Lehman Road-Ski Hi Road Area

- Full access intersections.
- 100' wide median to provide a 2-stage crossing.
- Left and right turns lanes designed to meet current standards.
- Frontage road west of US 12 north from Lehman Road.



Ski Hi Road Intersection

- Full access intersection.
- 100' wide median to provide a 2-stage crossing.
- Left and right turns lanes designed to meet current standards.
- Safe intersection.



Ski Hi Road – End of Project

- Median narrows from 100' to 60' (standard) south of Ski Hi Road
- Matches into existing 4-lane section 0.75 miles south of Ski Hi Road.



4f/6f Mitigation

- 4f/6f Mitigation is required by federal law when there is a taking from a publicly funded facility such as a park or recreational area.
- The US 12 project involves purchasing right-of-way from Mirror Lake State Park and Devil's Lake State Park.
- The 4f/6f mitigation entails replacement of the land with land and facilities that are of comparable value and function.



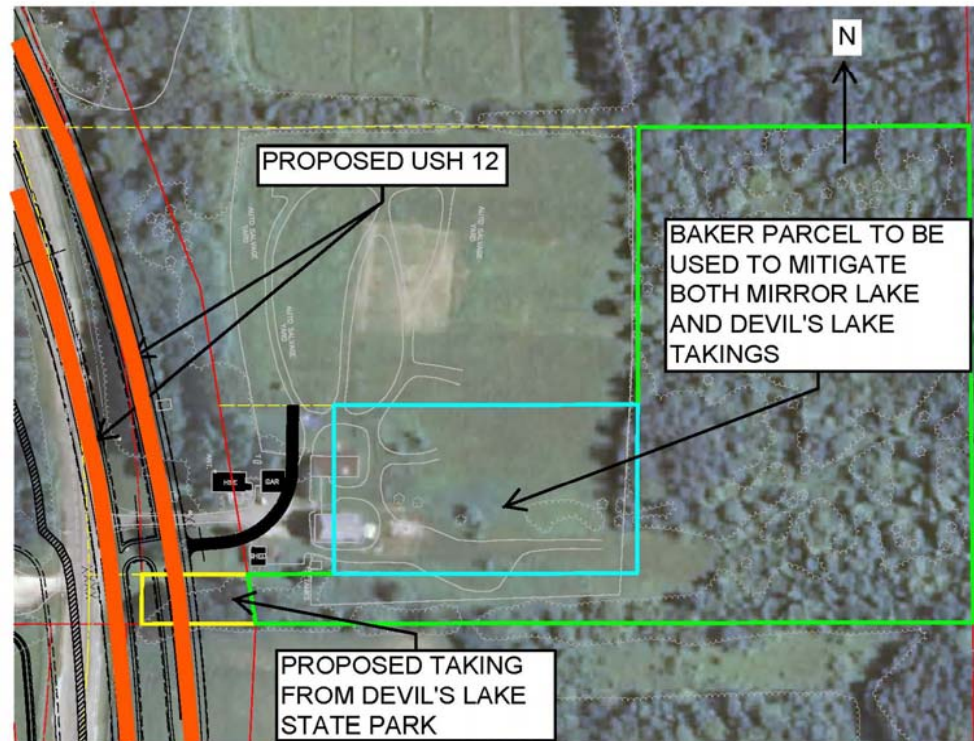
4f/6f Mitigation

- The taking from Mirror Lake State Park is required to build bicycle and pedestrian accommodation across I-94 that satisfies the requirement in the FEIS.



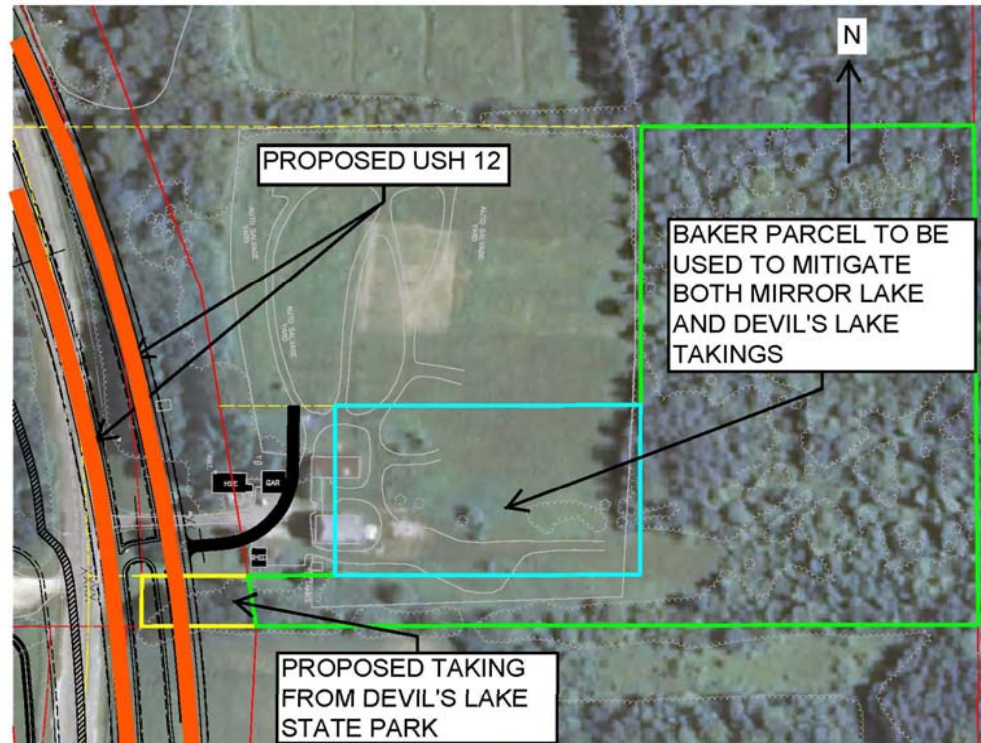
4f/6f Mitigation

- The taking from Devil's Lake State Park is required to build a drainage ditch along the South Section of the US 12 Bypass just north of Lehman Road.



4f/6f Mitigation

- The proposed mitigation site for the Mirror Lake and Devil's Lake takings is the Baker Parcel just north of Lehman Road.
- WisDOT is also investigating other sites.

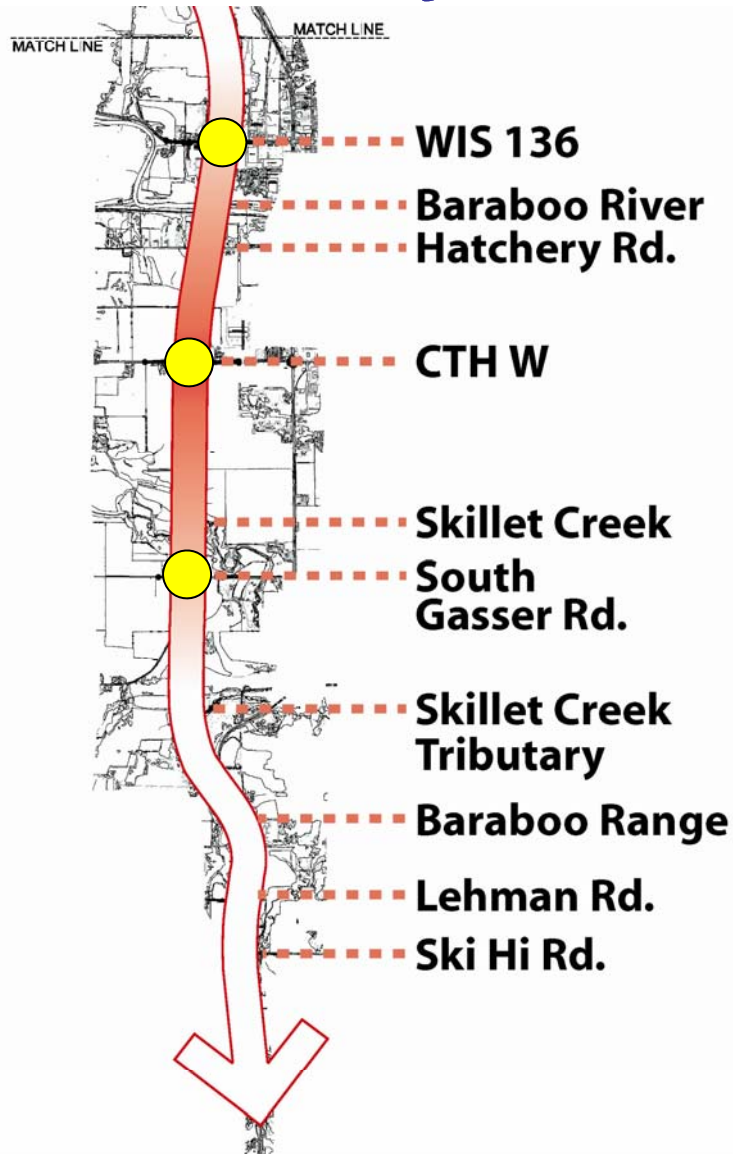


Community Sensitive Design (CSD)

- CSD funds are used by the Wisconsin Department of Transportation (WisDOT) to provide harmony between the roadway and the natural, social, economic, and cultural environments.
- Amenities can include:
 - Aesthetic treatment to structures (retaining walls, bridges)
 - Landscaping
 - Bicycle/Pedestrian Accommodations (South Gasser Road)
 - Native prairie planting/seeding
 - Decorative amenities i.e. fencing, lighting, special pavements
 - Wildlife crossings (Skillet Creek, Skillet Creek Tributary, Farr Property)



Community Sensitive Design - Structures



US 12 at WIS 136:

US 12 goes over WIS 136, therefore the bridge is highly visible from the local roadway.

US 12 at Hatchery Rd:

No roadway crossings; no structures.

US 12 at CTH W:

US 12 goes over CTH W, therefore the bridge is highly visible from the local roadway.

US 12 at South Gasser Rd:

US 12 goes under South Gasser Rd, therefore the bridge is highly visible from US 12.

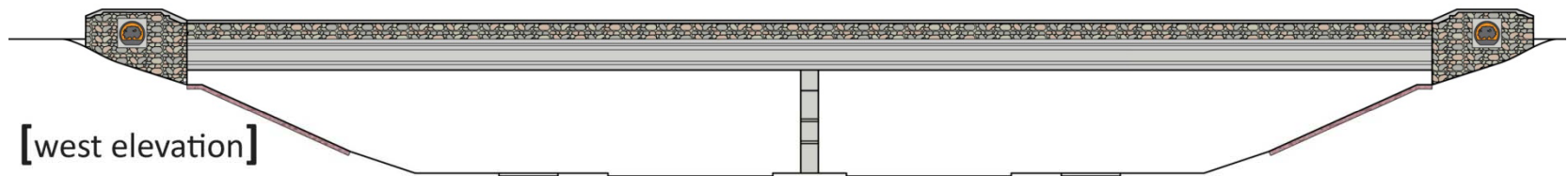
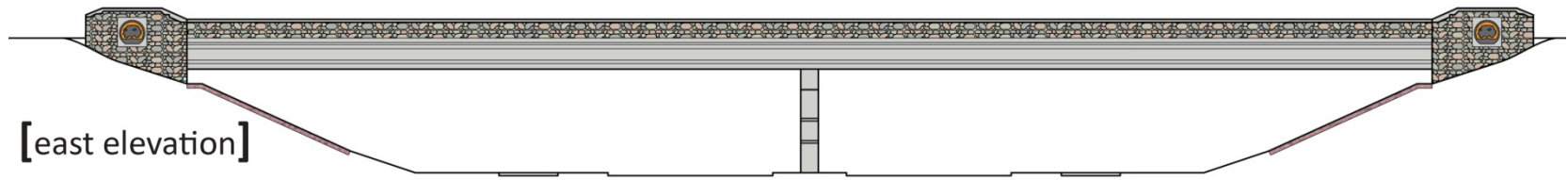
US 12 at Lehman Rd and Ski Hi Rd:

At grade crossing; no structures.

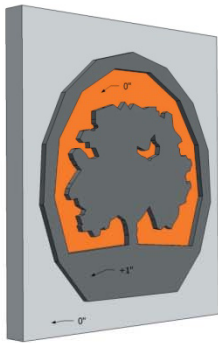
Other Structures:

Baraboo River
Skillet Creek
Skillet Creek Tributary

Community Sensitive Design – Structures

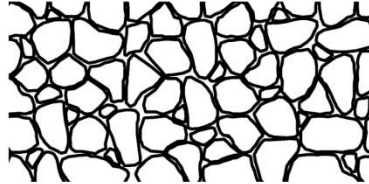


WIS 136



[wing wall icon relief and coloring]

Random Fieldstone Pattern

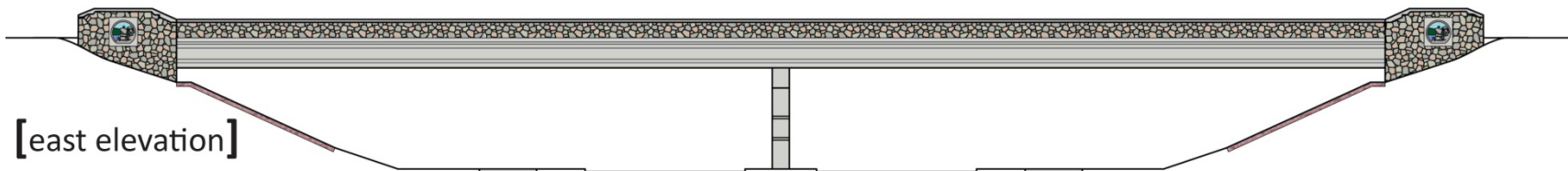


[formliner detail and color palette]

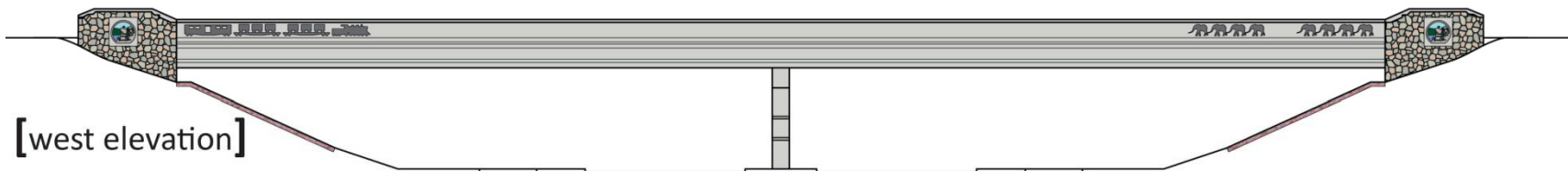
Broadway Bridge Color Palette



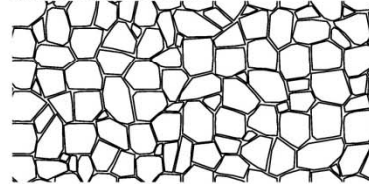
Community Sensitive Design - Structures



CTH W



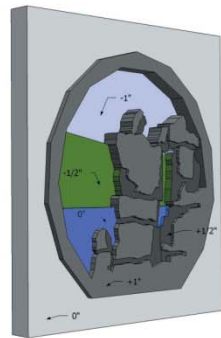
Baraboo Quartzite Pattern



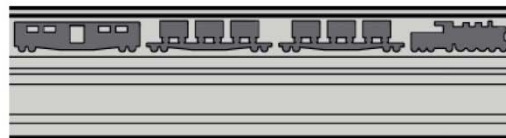
Broadway Bridge Color Palette



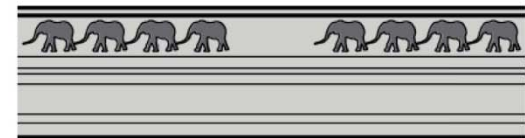
[formliner detail and color palette]



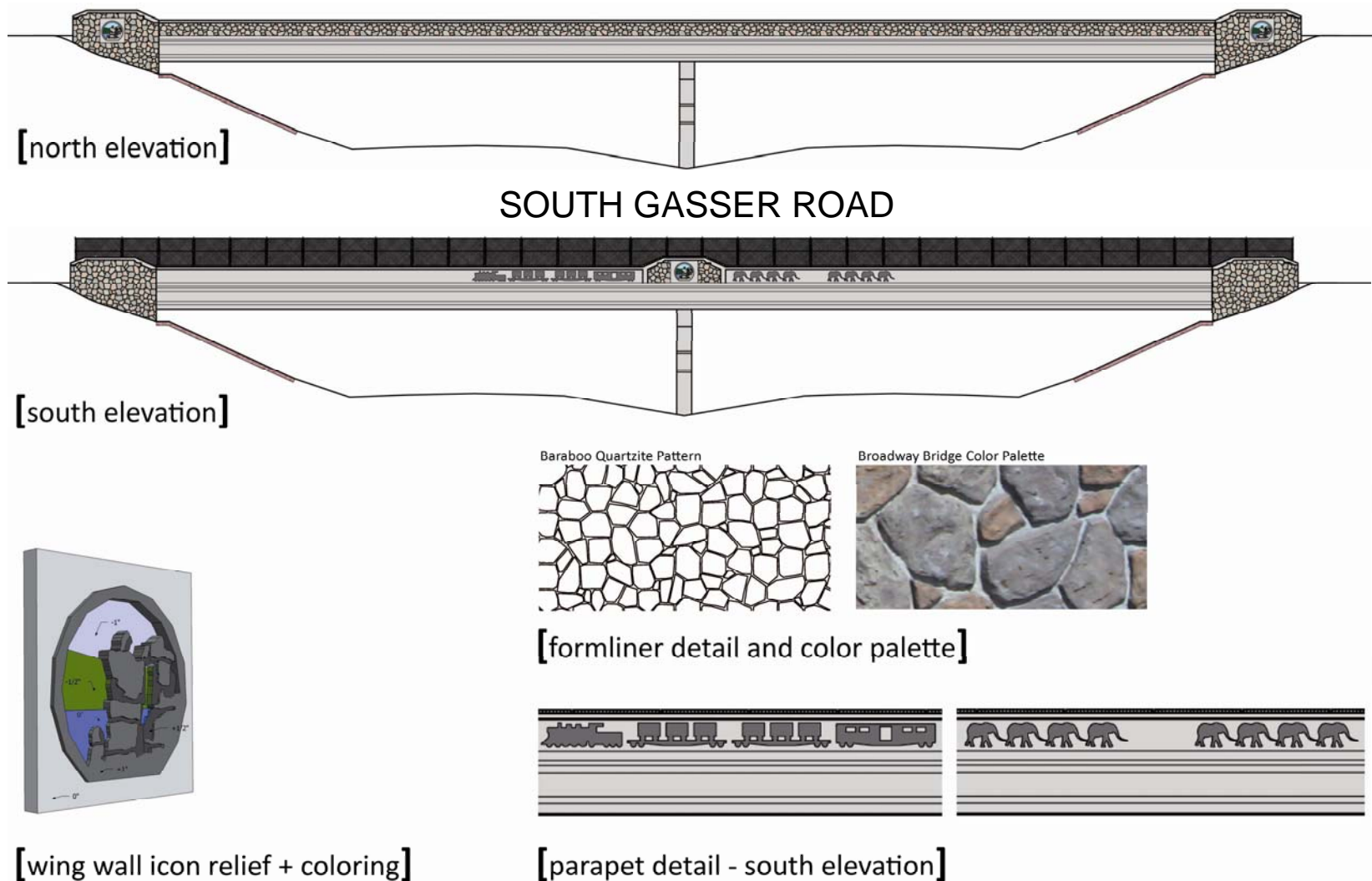
[wing wall icon relief + coloring]



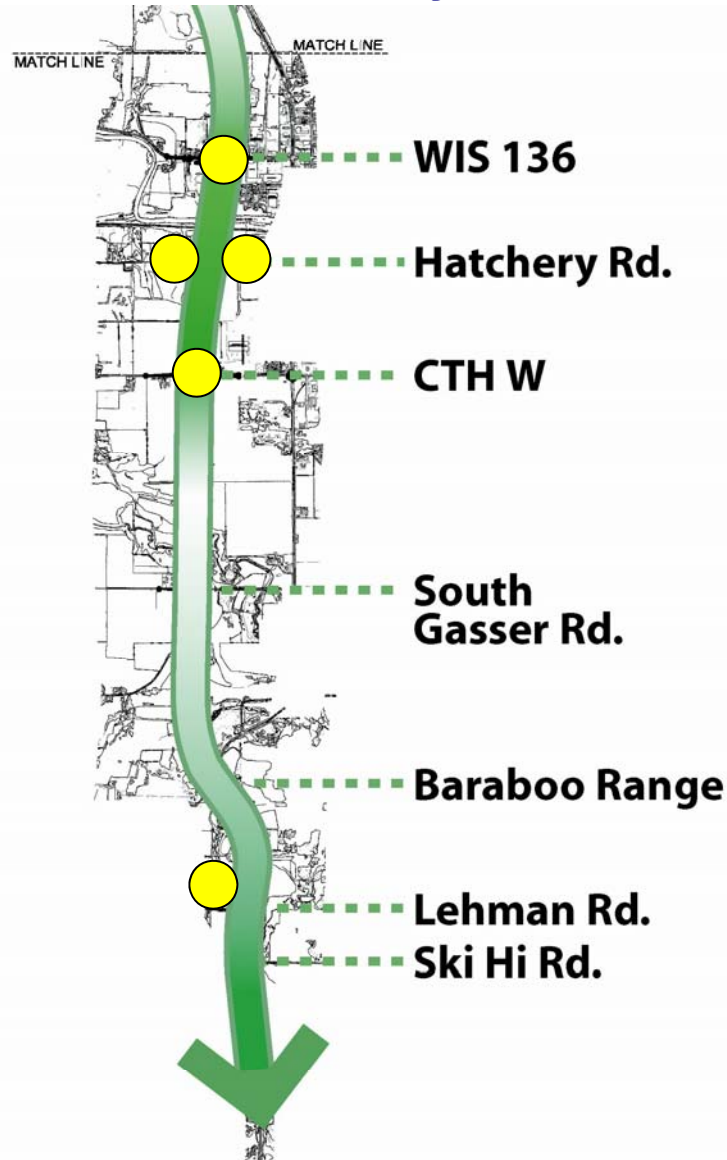
[parapet detail - west elevation]



Community Sensitive Design - Structures



Community Sensitive Design - Landscape



WIS 136 Interchange:

Two (2) roundabouts on WIS 136 at the US 12 ramp terminals.

Hatchery Rd:

Two (2) cul-de-sacs, one on either side of US 12..

CTH W Interchange:

Two (2) roundabouts on CTH W at the US 12 ramp terminals.

Lehman Frontage Road Berm:

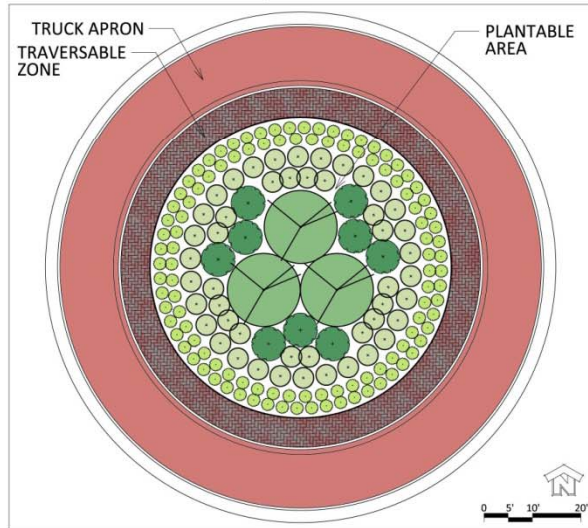
Approximately 1,500 linear feet of berm and plantings on the west side of US 12.

Other Opportunities:

Project-specific prairie seed mix for flat-bottomed swales at various locations throughout the corridor.

Community Sensitive Design - Landscape

WIS 136 - Concept A Plan



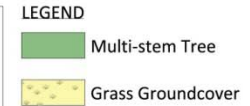
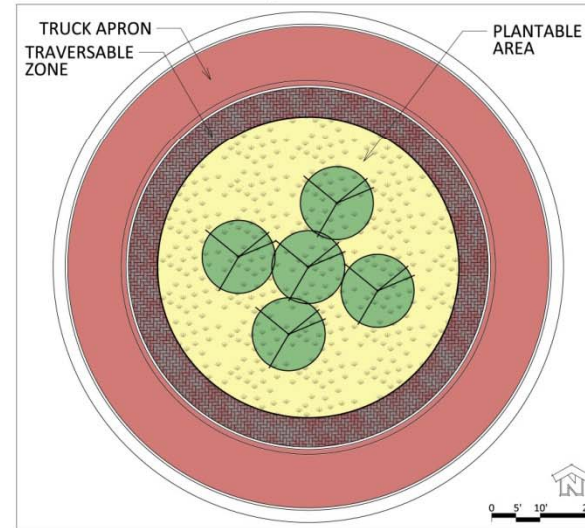
PLANT PALETTE

Common Name	Scientific Name	Mature Size	Description
Multi-stemmed Ornamental Trees			
Amelanchier (Shadblow)	<i>Amelanchier alnifolia</i>	20-30' H x 18-24" W	Roundish, spreading habit, small white flowers, purple fruit, brilliant red fall color
Crataegus (Hawthorn)	<i>Crataegus arvensis</i>	25-35' H x 25-35" W	Roundish, vase-shaped habit, white flowers, reddish purple fall color, red fruit
Malus (Malus)	<i>Malus domestica</i>	15-20' H x 15-20" W	White flower, bright red fruit
Amelanchier (Shadblow)	<i>Amelanchier canadensis</i>	20-30' H x 18-24" W	Roundish, vase-shaped habit, white flowers, yellow fall color
Evergreen Shrubs			
Juniper (Juniper)	<i>Juniperus communis</i>	8-10' H x 6-8" W	Upright, informal dense branching habit with dense blue-green foliage
Juniper (Juniper)	<i>Juniperus horizontalis</i>	2-3' H x 3-6" W	Creeping juniper with horizontally spreading branches and a somewhat flat top
Fall Ornamental Shrubs			
Burning Bush (Chicago Fire)	<i>Eurotia alata</i>	8-10' H x 8-10" W	Excellent dense branching and upright form, bright red fall color
Viburnum (Amelanchier)	<i>Viburnum dentatum</i>	8-10' H x 8-10" W	Roundish, open form, white flower, blue fruit, red-orange brightly fall color
Intermediate Ornamental Shrubs			
Arctostaphylos (Arctostaphylos)	<i>Arctostaphylos uva-ursi</i>	3-5' H x 3-4" W	Upright, compact form, white flower, bright red fruit, bright red fall color
Philadelphus (Philadelphus)	<i>Philadelphus x. 'Bouquet Blanc'</i>	5-6' H x 5-6" W	Upright, arching branches with large white flowers in spring
Small Ornamental Shrubs			
Spiraea (Spiraea)	<i>Spiraea betulifolia</i>	2' H x 2" W	Compact form, white flower, bright red fruit, red to copper fall color
Hydrangea (Hydrangea)	<i>Hydrangea macrophylla</i>	2-3' H x 2-3" W	Compact form, white flower, bright red fruit, red to copper fall color
Ornamental Grasses			
Feather Reed Grass (Karl Foerster)	<i>Calamagrostis canadensis</i>	10-15' H x 10-15" W	Upright ornamental grass with buff colored vertical seedheads in summer/fall
Switchgrass (Switchgrass)	<i>Panicum virgatum</i>	4-6' H x 12-14" W	Upright grass with small blue foliage and strong, upright habit, foliage turns yellow in fall
Switchgrass (Switchgrass)	<i>Panicum virgatum</i>	24-36" H x 24-36" W	Columnar ornamental grass with burgundy color, foliage turns beige in winter
Little Bluestem (Little Bluestem)	<i>Schizachyrium scoparium</i>	24-36" H x 18-24" W	Upright native bluestem with foliage color ranging from orange to red in fall



WIS 136 - Concept A Elevation

WIS 136 - Concept B Plan



PLANT PALETTE

Common Name	Scientific Name	Mature Size	Description
Multi-stemmed Ornamental Trees			
Hawthorn (Hawthorn)	<i>Crataegus arvensis</i>	25-35' H x 25-35" W	Roundish, vase-shaped habit, white flowers, reddish purple fall color, red fruit
Malus (Malus)	<i>Malus domestica</i>	15-20' H x 15-20" W	White flower, bright red fruit
Native Grass Groundcover			
Little Bluestem	<i>Schizachyrium scoparium</i>	24-36" H x 18-24" W	Upright native bluestem with foliage color ranging from orange to red in fall



WIS 136 - Concept B Elevation

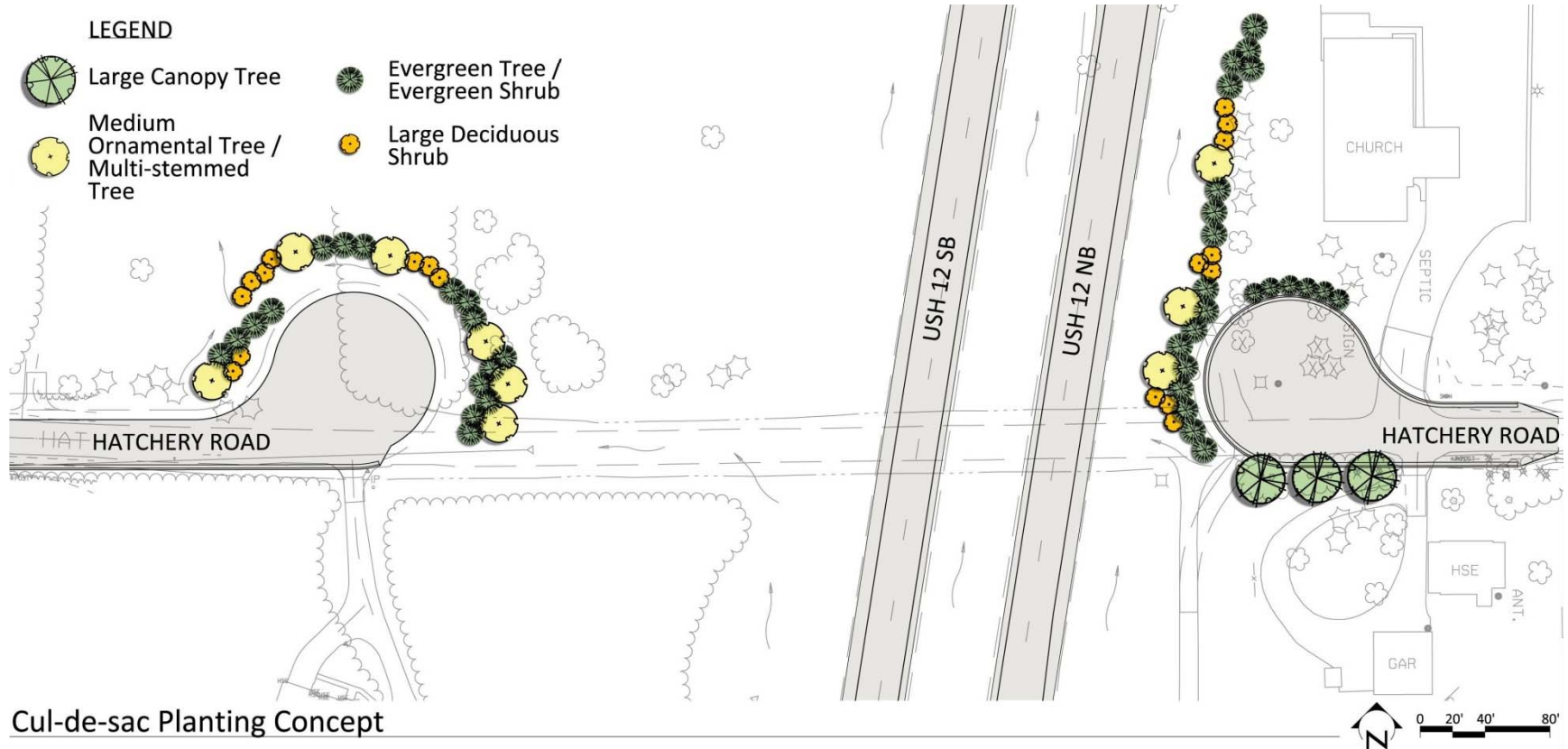
WIS 136

February 6, 2013

USH 12 Sauk County



Community Sensitive Design - Landscape

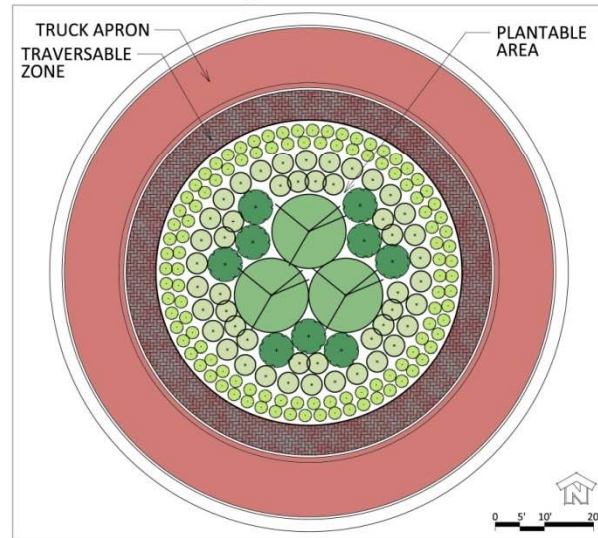


Cul-de-sac Planting Concept

HATCHERY ROAD CUL-DE-SACS

Community Sensitive Design - Landscape

CTH W - Concept A Plan



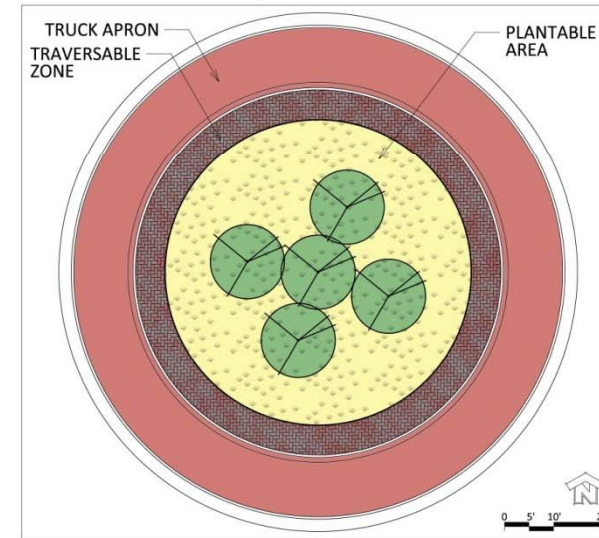
PLANT PALETTE

Common Name	Scientific Name	Mature Size	Description
Multi-Stemmed Ornamental Trees			
Hawthorn, Cockspur (Multistem)	<i>Crataegus crus-galli var. minima</i>	10-30' H x 20-30' sp.	White flower, bright red fruit
Crataegus, Paenifolia (Multistem)	<i>Malus Paenifolia</i>	20' H x 20' sp.	Coned flower, red-purple fruit
Viburnum, Blackhaw (Multistem)	<i>Viburnum prunifolium</i>	12-15' H x 8-12' sp.	Broad form, white clusters of flowers, bluish-black fruit, purple-red fall color
Large Shrubs			
Juniper, Blue	<i>Juniperus chinensis 'Suecica'</i>	8-10' H x 4-6' sp.	Upright, informal (loose branching) habit with coarse blue-green foliage
Juniper, Yellow	<i>Juniperus x cylindrica 'Pulley's Compact'</i>	2-3' H x 4-6' sp.	Dead juniper with horizontally spreading branches and a somewhat flat top
Medium Shrubs			
Juniper, Yellow's Compact			
Small Shrubs			
Alder, Common	<i>Alnus incana</i>	8-10' H x 6-10' sp.	Dense and compact with orange to red fall color
Physocarpus, Opulifolius 'Majesty'		12' H x 6' sp.	Orange-bronze selection with pink buds and white flowers
Medium Shrubs			
Physocarpus, Opulifolius		6-8' H x 6-8' sp.	Upright, spreading shrub, large white flowers, reddish green fall color
Artemisia, Green Black Autumn Magic		3-5' H x 3-4' sp.	Upright, compact form, white flowers, bright red fruit, bright red fall color
Small Shrubs			
Artemisia, Green Black Autumn Magic		2-3' H x 5-6' sp.	Compact form, white flower, bright red fruit, red fall color
Artemisia, Green Black Autumn Magic		2-3' H x 2-3' sp.	Compact form, white flower, bright red fruit, red fall color
Ornamental Grasses			
Feathergrass, Shemadell	<i>Panicum virgatum 'Shemadell'</i>	24-36" H x 24-36" sp.	Columnar ornamental grass with burgundy color, foliage turns beige in winter
Blue Bluestem, The Blues	<i>Schizanthus pinnatifidus 'The Blues'</i>	24-36" H x 18-24" sp.	Upright native bluestem with foliage color range according to blue and purple



CTH W - Concept A Elevation

CTH W - Concept B Plan



PLANT PALETTE

Common Name	Scientific Name	Mature Size	Description
Multi-Stemmed Ornamental Trees			
Hawthorn, Cockspur (Multistem)	<i>Crataegus crus-galli var. minima</i>	10-30' H x 20-30' sp.	White flower, bright red fruit
Crataegus, Paenifolia (Multistem)	<i>Malus Paenifolia</i>	20' H x 20' sp.	Coned flower, red-purple fruit
Viburnum, Blackhaw (Multistem)	<i>Viburnum prunifolium</i>	12-15' H x 8-12' sp.	Broad form, white clusters of flowers, bluish-black fruit, purple-red fall color
Native Grass Groundcover			
Sideoats Grama	<i>Bouteloua curtipendula</i>	24-36" H x 12"-18" sp.	Native grass with cat-like seed spikes, golden brown to reddish in fall



CTH W - Concept B Elevation

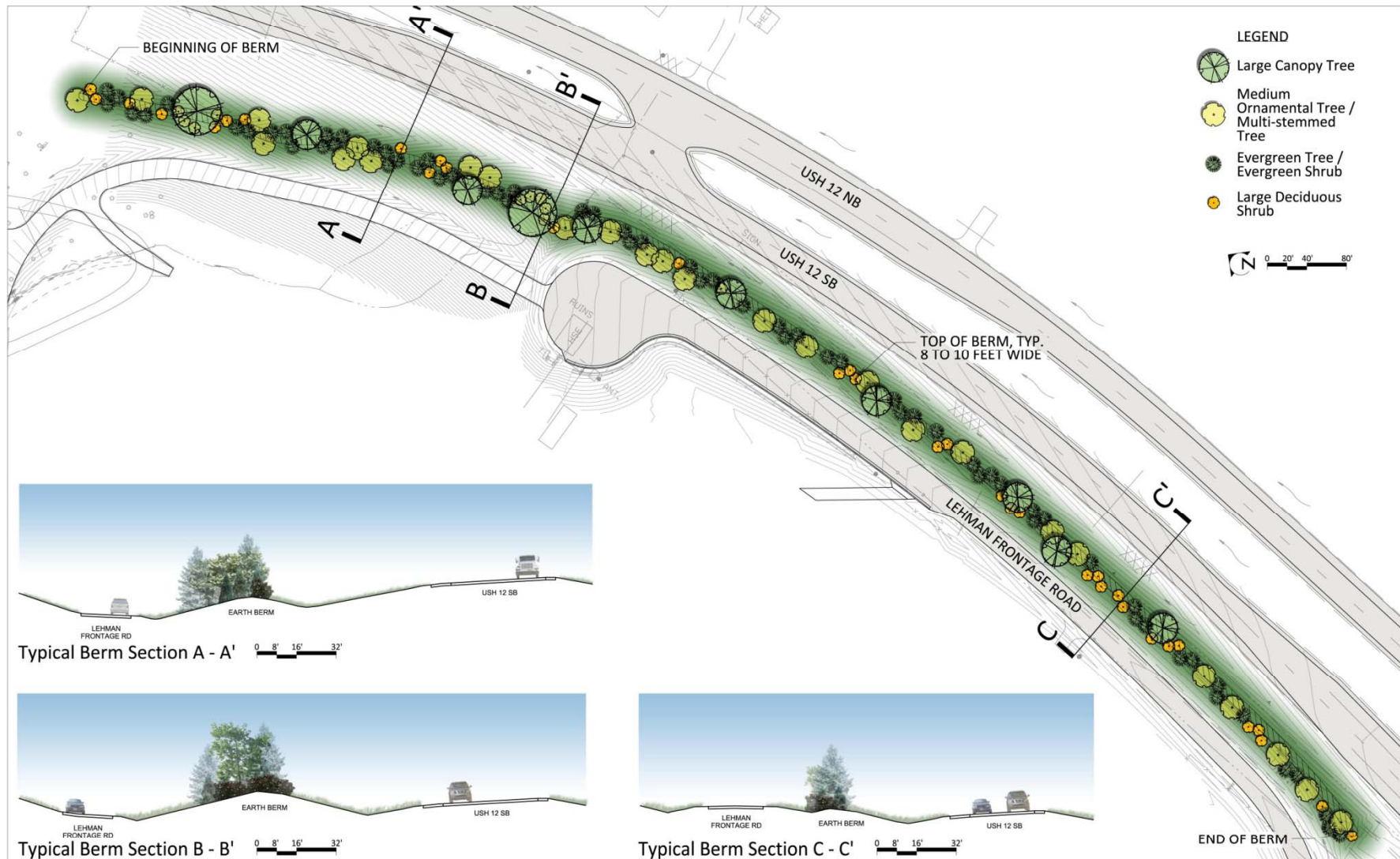
CTH W

February 6, 2013

USH 12 Sauk County



Community Sensitive Design - Landscape



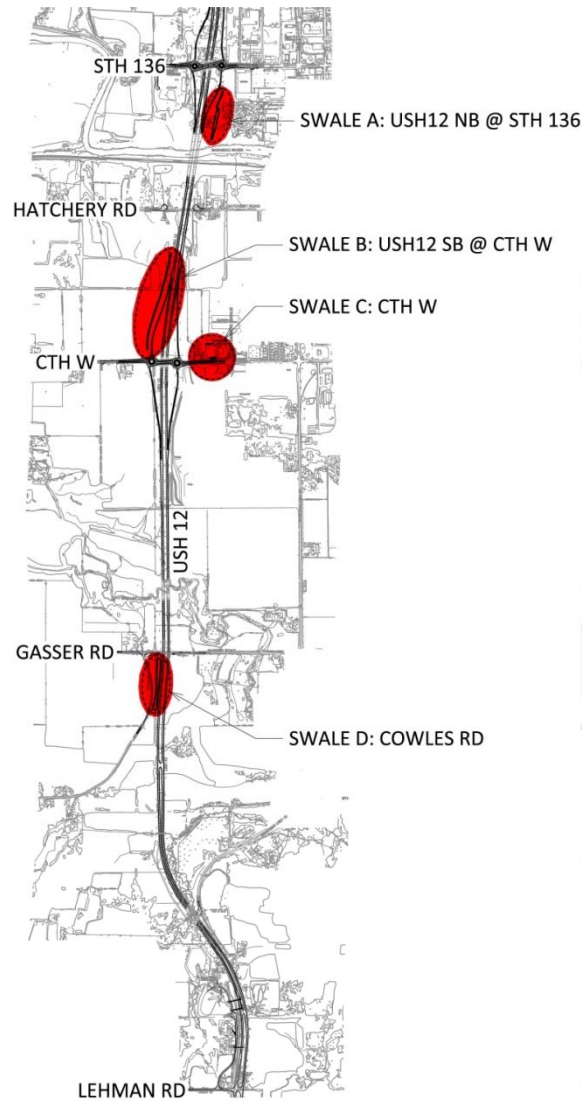
LEHMAN FRONTAGE ROAD BERM

February 6, 2013

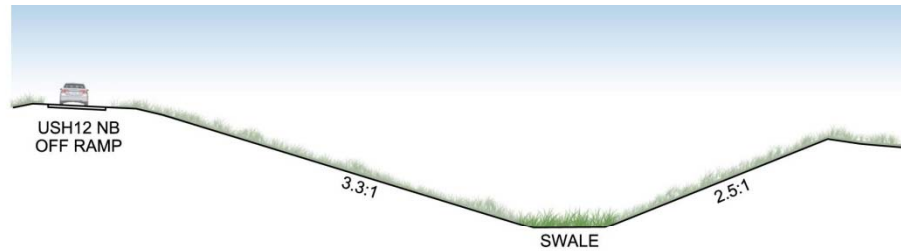
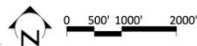
USH 12 Sauk County



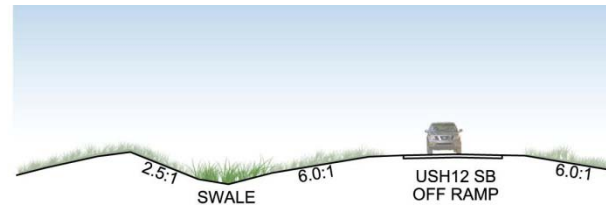
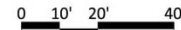
Community Sensitive Design - Landscape



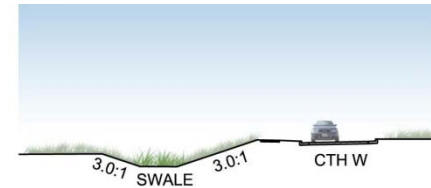
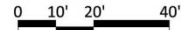
Swale Location Map



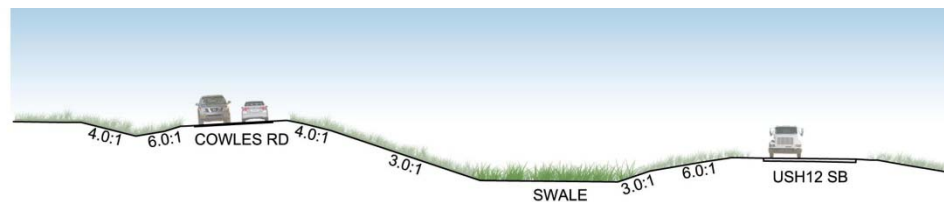
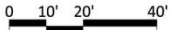
Typical Swale Section A



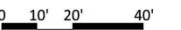
Typical Swale Section B



Typical Swale Section C



Typical Swale Section D



USH 12 Sauk County



February 6, 2013

Specific Information Signs (SIS)



**Program to Direct Motorists to Services
up to 5 Miles from Highways**

Business Categories

- Food
- Gasoline
- Lodging
- Camping
- Attractions

DERSE

Wisconsin Highway Business Signs

Contact Information

800-345-5772

<http://www.wisconsinhighwaybusinesssigns.com>



What's next for the South Section?

- Real Estate Acquisition completed by end of 2013.
- Plans for off alignment grading and structures, WIS 136, CTH W and Gasser Road grading and paving will be bid in November 2014.
- Plans for on-alignment grading and structures and paving will be bid in November 2015.
- Construction to begin in 2015 and end in 2016.

US 12 SOUTH SECTION SCHEDULE												
	2012-2013				2014				2015			
PUBLIC INFORMATION		★			★				★			
REAL ESTATE NEGOTIATION AND ACQUISITION												
FINAL DESIGN												
CONSTRUCTION												



Project Contacts

Jeremy Krachey

WisDOT Project Manager
WisDOT SW Region La Crosse
(608) 789-5702

jeremy.krachey@dot.wi.gov

Mike Bakalars

Consultant Project Manager
KL Engineering, Inc.
(608) 663-1218

mbakalars@klengineering.com

Ian Winger

WisDOT Supervisor
WisDOT SW Region La Crosse
(608) 789-5541

oscar.winger@dot.wi.gov

