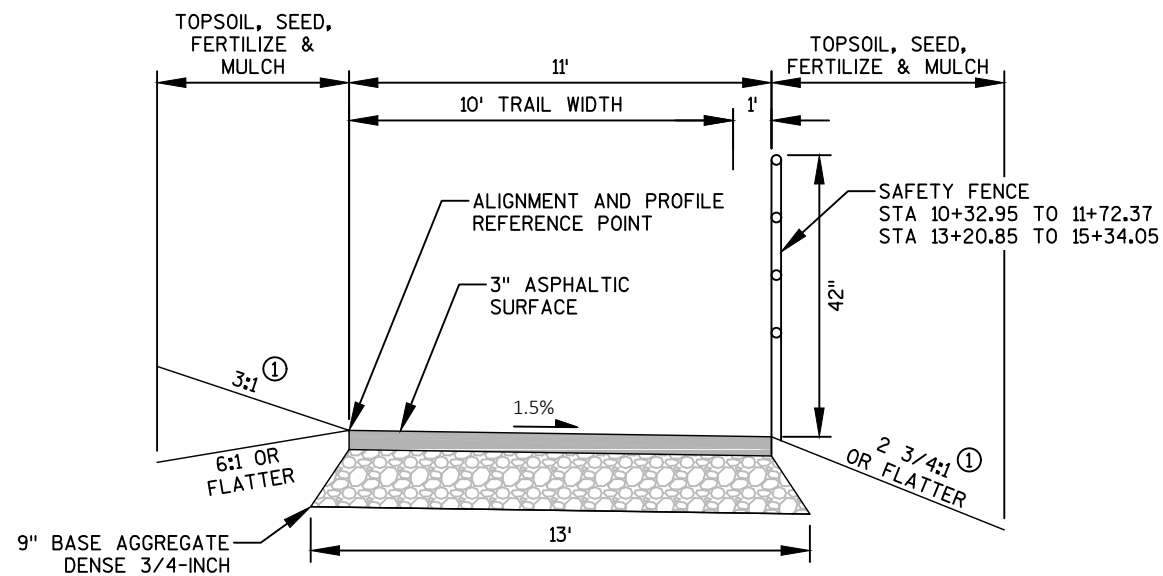


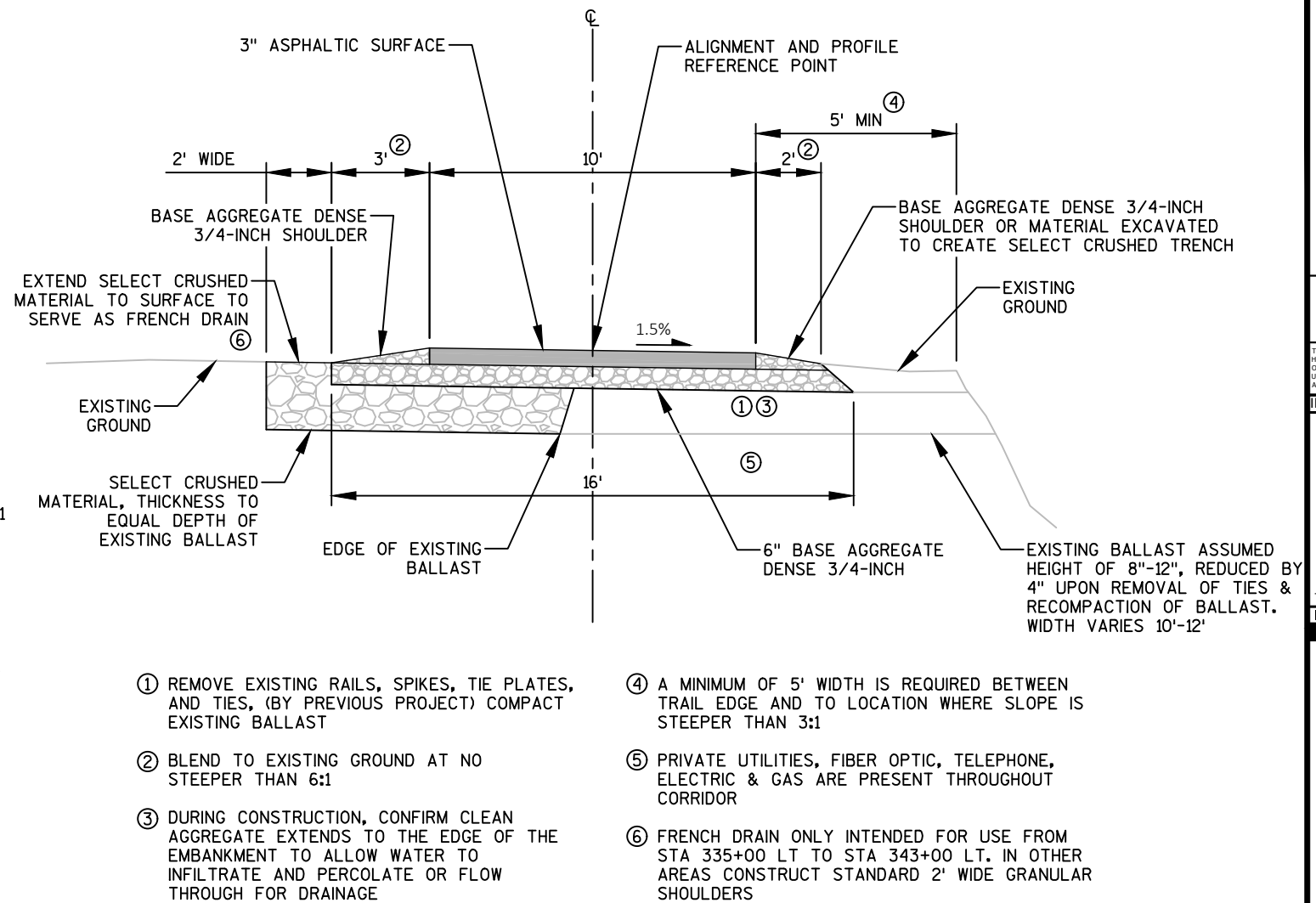
#### TYPICAL FINISHED SECTION

TRAIL WITH GRANULAR SHOULDERS  
STA 308+00 TO STA 326+00  
STA 343+00 TO STA 357+75



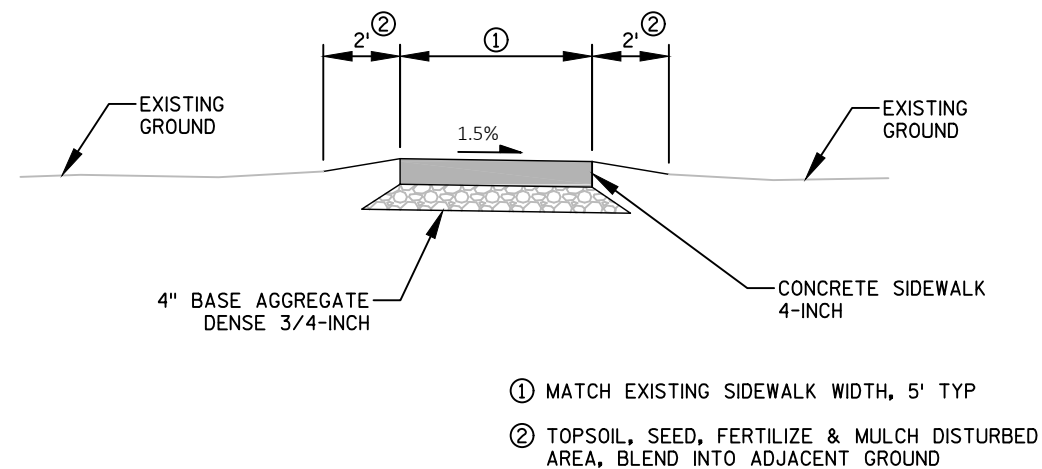
#### TYPICAL FINISHED SECTION

WATER STREET SIDEWALK ACCESS  
TO GREAT SAUK STATE TRAIL  
AT NORTH EAGLE GATE LOCATION  
STA 10+24.53 TO STA 16+02.82



#### TYPICAL FINISHED SECTION

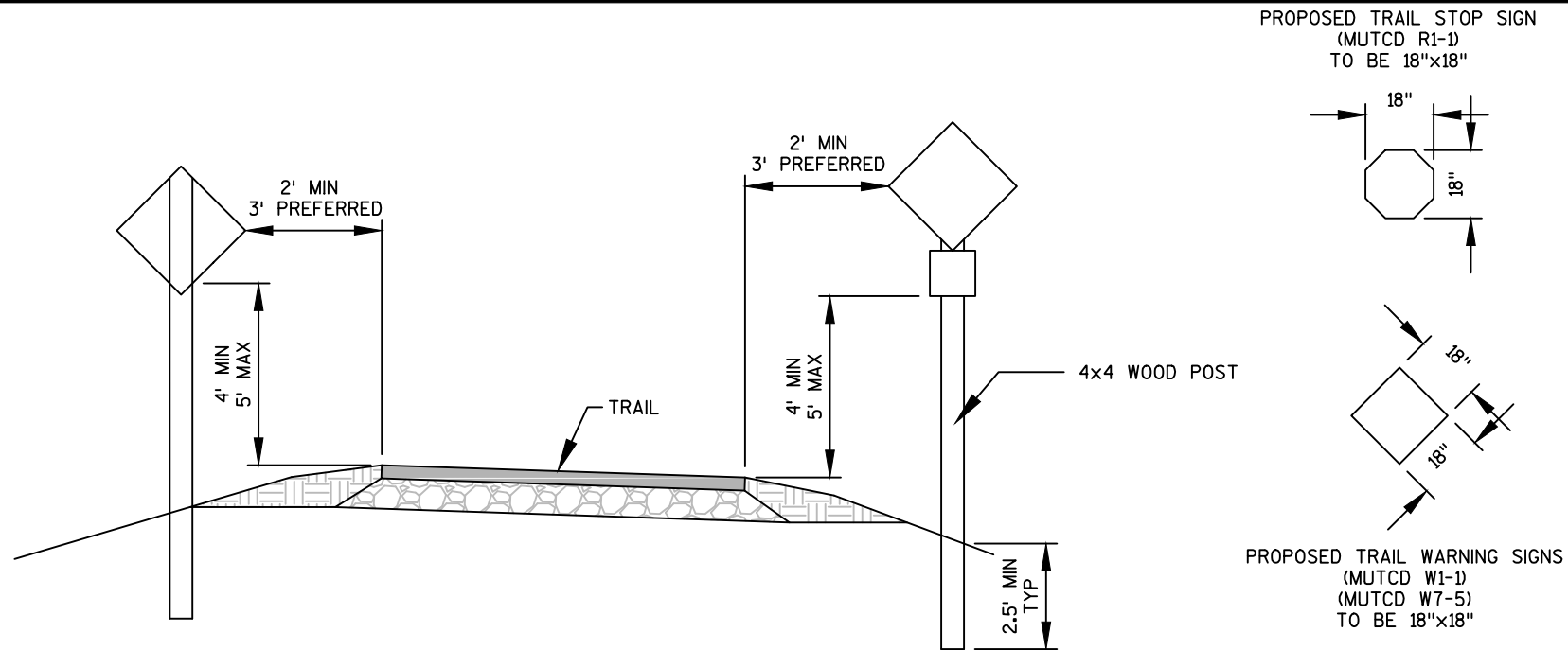
HORIZONTAL ALIGNMENT SHIFTED FROM EXISTING RAILROAD  
TRACK CENTERLINE, TRAIL WITH GRANULAR SHOULDERS  
STA 326+00 TO STA 343+00



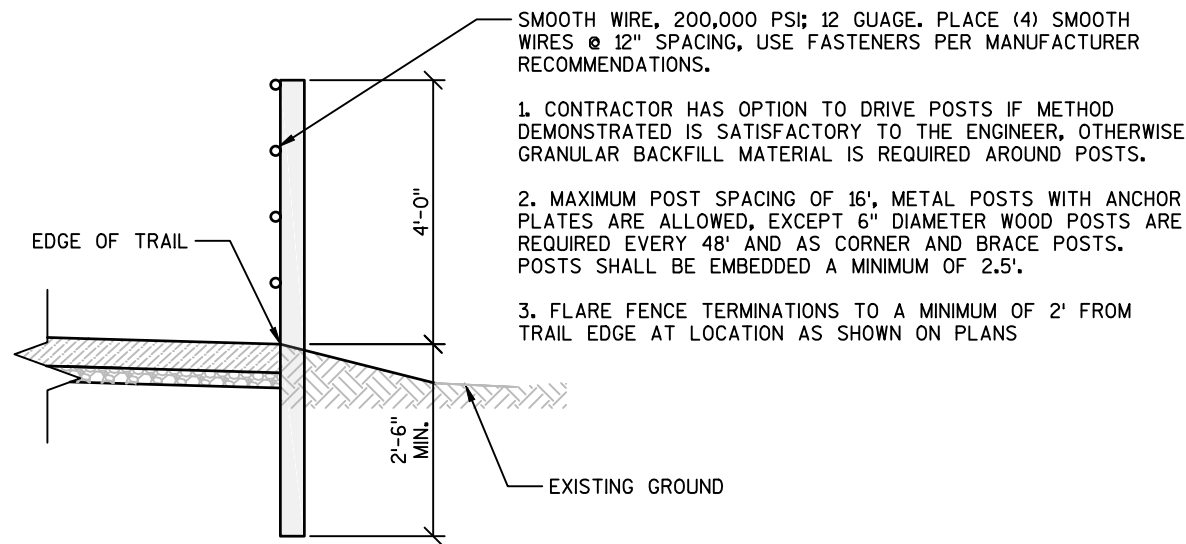
#### TYPICAL FINISHED SECTION

SIDEWALK REPLACEMENT AT TRAIL CROSSING AREAS

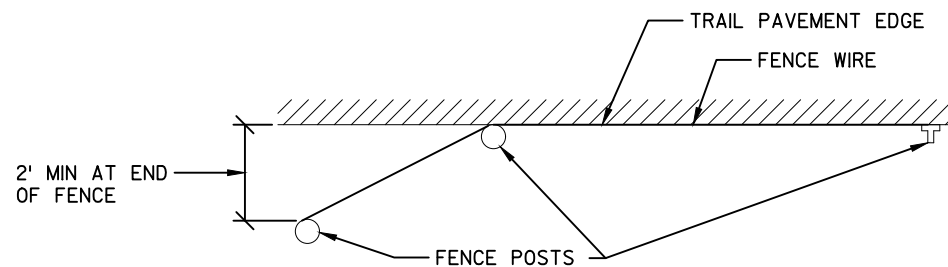
STA 9+76 (NORTH EAGLE GATE)	STA 144+60
STA 119+60	STA 150+60
STA 134+10	STA 157+75
STA 139+10 RT	STA 206+15 LT
STA 139+75 LT	STA 211+39 LT
STA 140+20 RT	STA 304+46 LT



TRAIL SIGN LAYOUT



FENCE INSTALLATION DETAIL



FENCE INSTALLATION DETAIL - END FLARE  
TYPICAL SECTION

**JEWELL**  
associates engineers, Inc.  
Engineers - Surveyors - Architects

560 Sunrise Drive  
Spring Green, WI 53588  
phone: 608-588-7484  
fax: 608-588-9322

THIS DOCUMENT, THE IDEAS AND DESIGNS INCORPORATED HEREIN AS AN INSTRUMENT OF SERVICE, IS THE PROPERTY OF JEWELL ASSOCIATES ENGINEERS, INC. AND IS NOT TO BE USED IN WHOLE OR IN PART WITHOUT PRIOR WRITTEN AUTHORIZATION OF JEWELL ASSOCIATES ENGINEERS, INC.

IIW, P.C.

**iiw**

ARCHITECTURE  
CIVIL ENGINEERING  
CONSTRUCTION SERVICES  
ENVIRONMENTAL ENGINEERING  
LAND SURVEYING  
MUNICIPAL ENGINEERING  
STRUCTURAL ENGINEERING  
TRANSPORTATION ENGINEERING  
INTEGRITY.EXPERTISE.SOLUTIONS

**Great Sauk State Trail  
Prairie Du Sac/Sauk City Unit  
Sauk County, Wisconsin**

Date  
**5/30/2017**

-	-
-	-
-	-
-	-
-	-
-	-
Date	Revision

Drawing Name

**Construction  
Details  
Sign & Fence  
Information**

Sheet Number

**C4.0**

Project Number

**16217**

**Great Sauk State Trail  
Prairie Du Sac/Sauk City Unit  
Sauk County, Wisconsin**

Date

5/30/2017

Date	Revision

Drawing Name

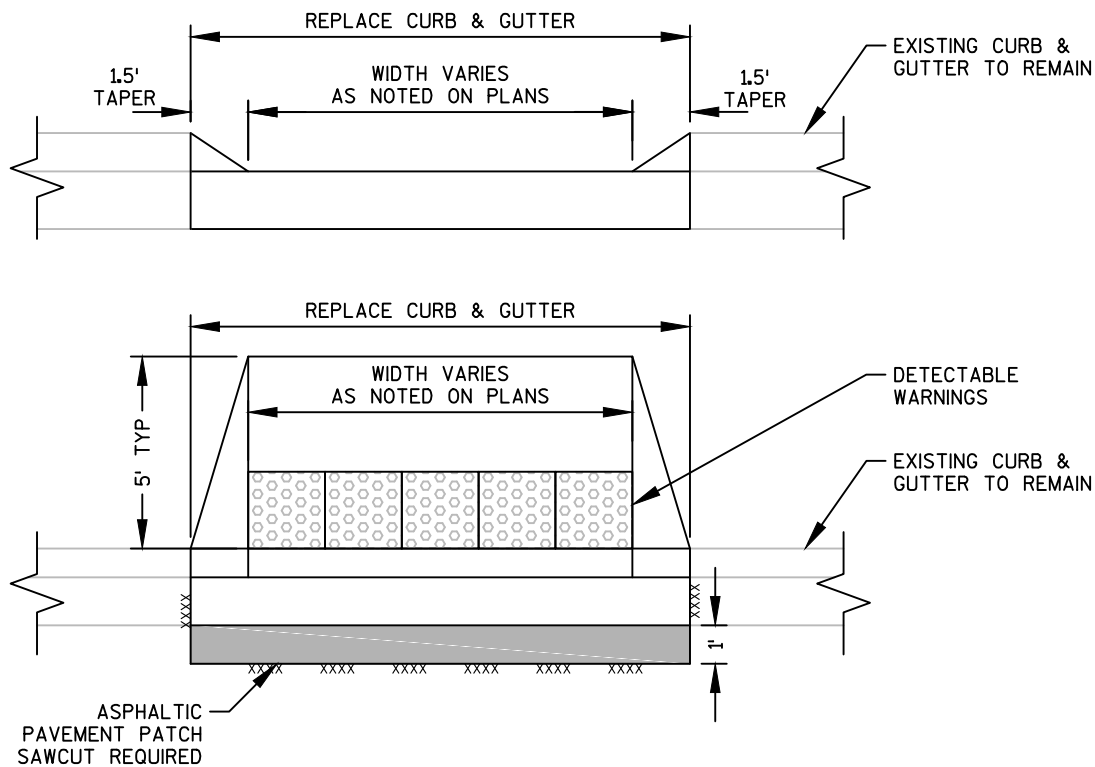
**Construction  
Details  
Crosswalk &  
Curb Information**

Sheet Number

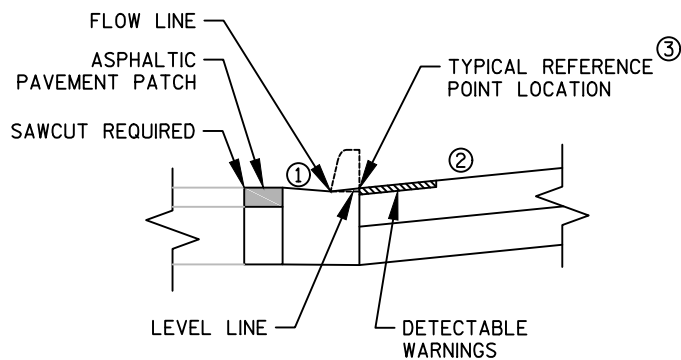
**C4.1**

Project Number

**16217**

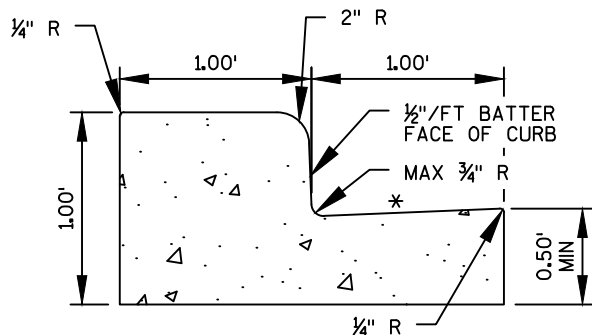


TYPICAL CURB REPLACEMENT DETAIL



- ① 4% MAXIMUM GUTTER FLAG SLOPE. VARY SLOPE AS REQUIRED TO MATCH EXISTING ROADWAY. GRADE CHANGE BETWEEN SLOPE ① AND SLOPE ② NOT TO EXCEED 11%
- ② 8.33% MAXIMUM SLOPE. GRADE CHANGE BETWEEN SLOPE ① AND SLOPE ② NOT TO EXCEED 11%
- ③ REFERENCE POINT LOCATION AS SHOWN ON CONSTRUCTION DETAIL SHEETS C4.4 - C4.20 IS 0.035' ABOVE GUTTER FLOW LINE

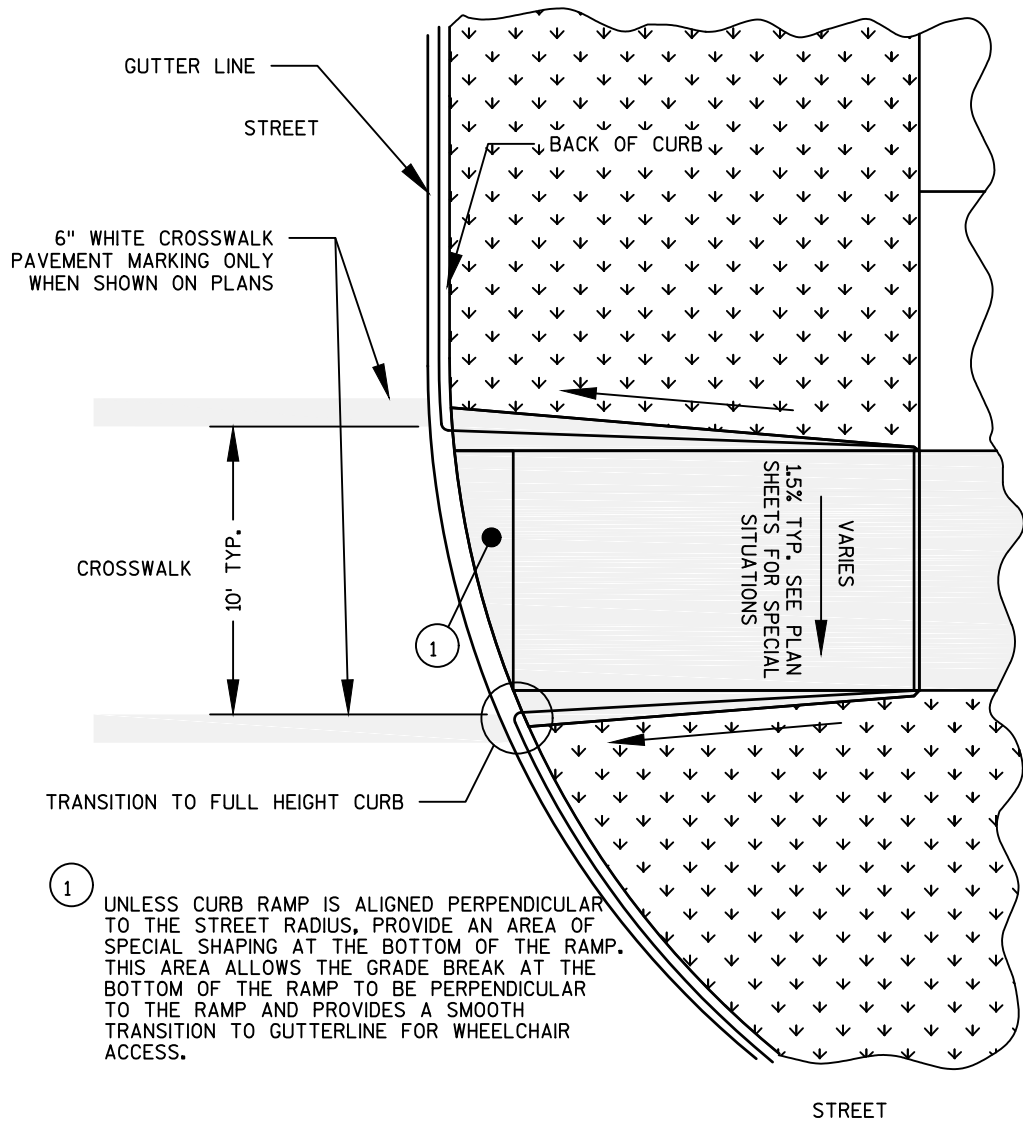
TYPICAL SIDEWALK DROP CURB DETAIL



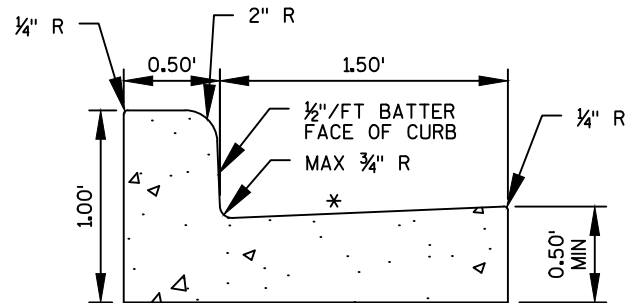
SEE S.D.D. "CONCRETE CURB, CONCRETE CURB & GUTTER AND TIES" FOR ADDITIONAL INFORMATION

\*SLOPE VARIES TO MATCH ADJACENT PAVEMENT OR CURB AS APPROPRIATE. SEE ADDITIONAL SIDEWALK DROP CURB DETAIL FOR RESTRICTIONS AT SIDEWALK CROSSING LOCATIONS.

CONCRETE CURB AND GUTTER 24-INCH  
TYPE D SPECIAL - PHILLIPS BLVD/US-12



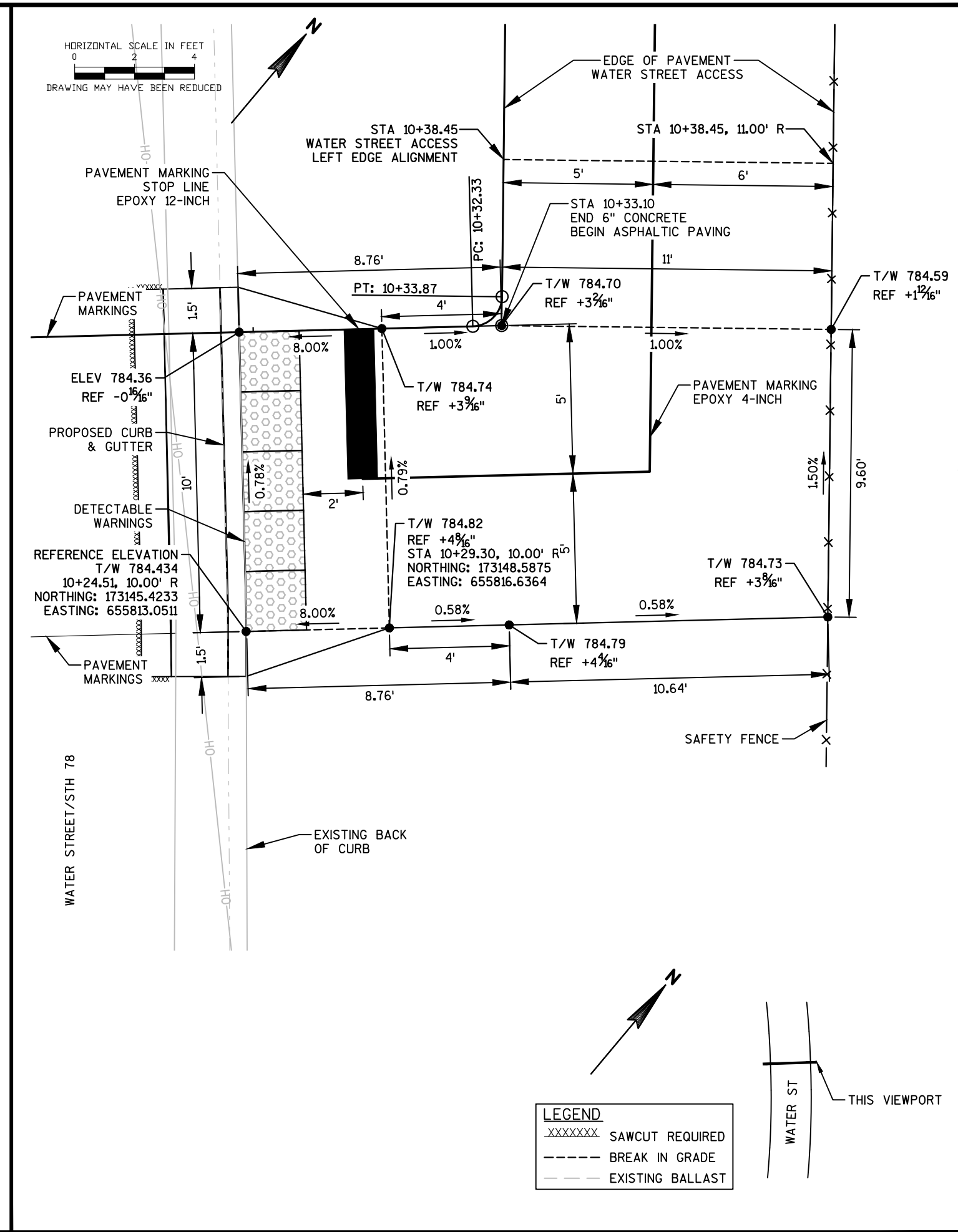
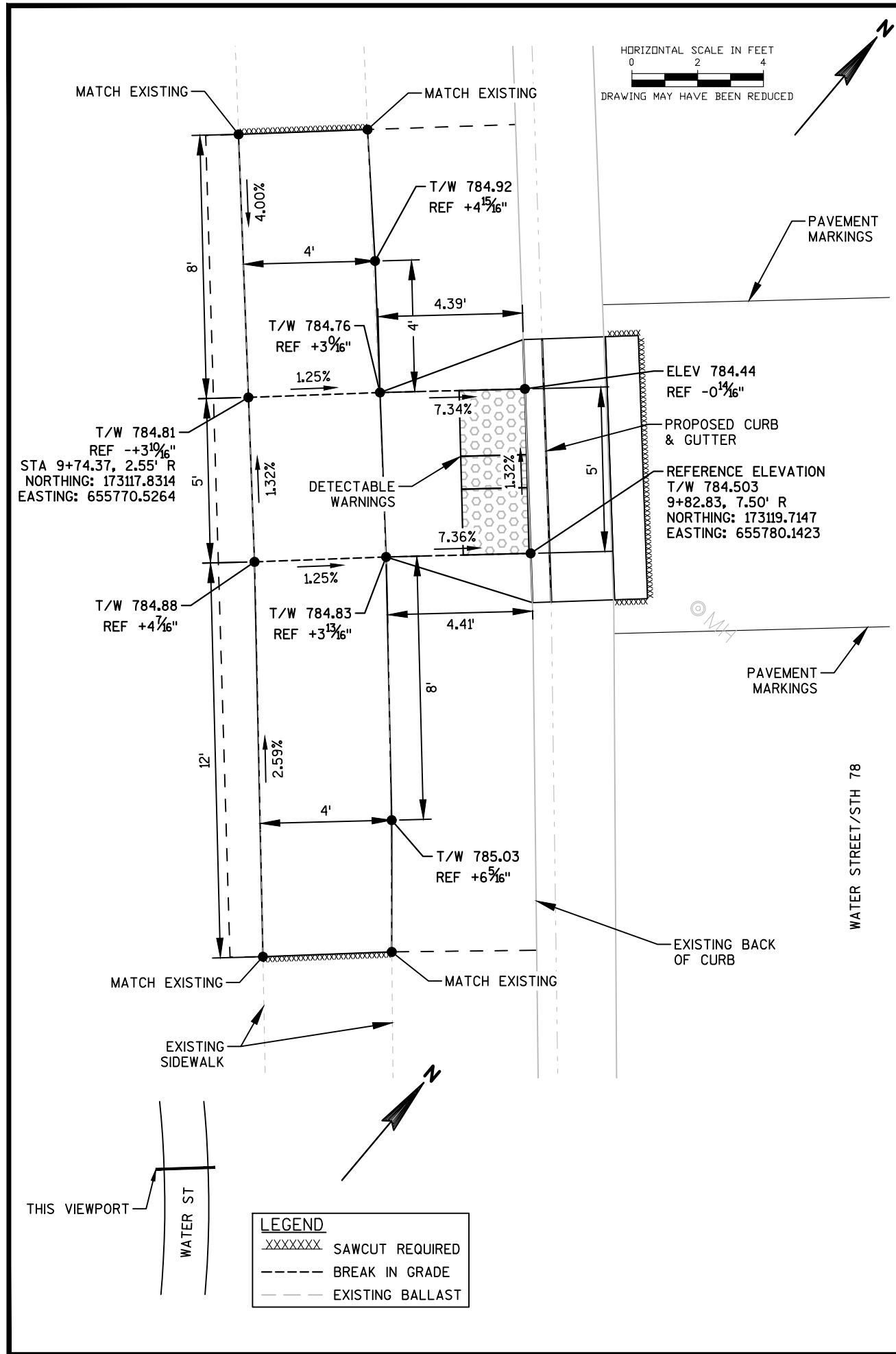
TYPICAL CROSSWALK MARKING DETAIL



SEE S.D.D. "CONCRETE CURB, CONCRETE CURB & GUTTER AND TIES" FOR ADDITIONAL INFORMATION

\*SLOPE VARIES TO MATCH ADJACENT PAVEMENT OR CURB AS APPROPRIATE. SEE ADDITIONAL SIDEWALK DROP CURB DETAIL FOR RESTRICTIONS AT SIDEWALK CROSSING LOCATIONS.

CONCRETE CURB AND GUTTER 24-INCH  
TYPE D



**JEWELL**  
associates engineers, inc.  
Engineers - Surveyors - Architects

560 Sunrise Drive  
Spring Green, WI 53588  
phone: 608-588-7484  
fax: 608-588-9322

THIS DOCUMENT, THE IDEAS AND DESIGNS INCORPORATED HEREIN AS AN INSTRUMENT OF SERVICE, IS THE PROPERTY OF JEWELL ASSOCIATES ENGINEERS, INC. AND IS NOT TO BE USED IN WHOLE OR IN PART WITHOUT PRIOR WRITTEN AUTHORIZATION OF JEWELL ASSOCIATES ENGINEERS, INC.

iiw, P.C.

**iiw**

ARCHITECTURE  
CIVIL ENGINEERING  
CONSTRUCTION SERVICES  
ENVIRONMENTAL ENGINEERING  
LAND SURVEYING  
MUNICIPAL ENGINEERING  
STRUCTURAL ENGINEERING  
TRANSPORTATION ENGINEERING  
INTEGRITY.EXPERTISE.SOLUTIONS

**Great Sauk State Trail  
Prairie Du Sac/Sauk City Unit  
Sauk County, Wisconsin**

Date  
5/30/2017

Date Revision

Drawing Name  
**Construction  
Details - Water St  
North Eagle Gate  
Curb Ramps**

Sheet Number  
**C4.20**

Project Number  
**16217**

THIS DOCUMENT, THE IDEAS AND DESIGNS INCORPORATED  
HEREIN AS AN INSTRUMENT OF SERVICE, IS THE PROPERTY  
OF JEWELL ASSOCIATES ENGINEERS, INC. AND IS NOT TO BE  
USED IN WHOLE OR IN PART WITHOUT PRIOR WRITTEN  
AUTHORIZATION OF JEWELL ASSOCIATES ENGINEERS, INC.



ARCHITECTURE  
CIVIL ENGINEERING  
CONSTRUCTION SERVICES  
ENVIRONMENTAL ENGINEERING  
LAND SURVEYING  
MUNICIPAL ENGINEERING  
STRUCTURAL ENGINEERING  
TRANSPORTATION ENGINEERING  
INTEGRITY.EXPERTISE.SOLUTIONS

Date  
**5/30/2017**

Drawing Name  
**Traffic Control  
Water St/STH 78  
Stage 1**

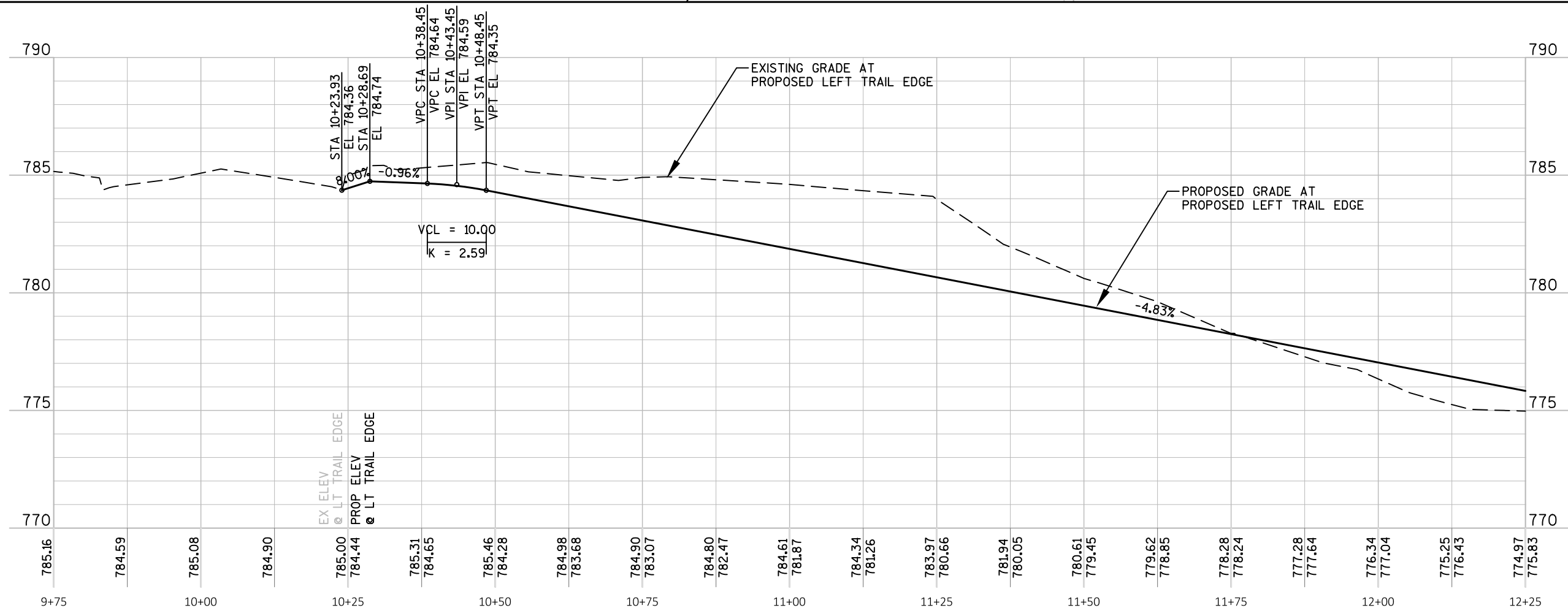
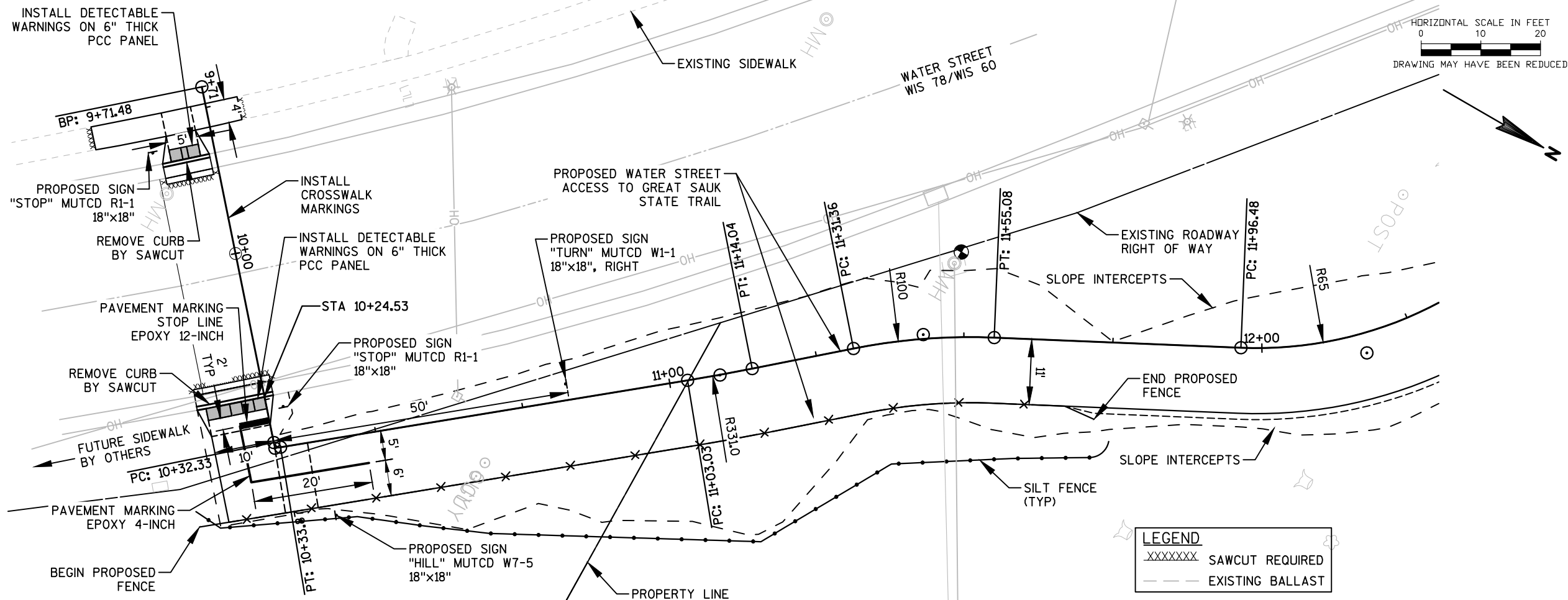
### C4.37

16217



PLOT BY : ERIC URE

PLOT SCALE : 1" = 1'



**JEWELL**  
associates engineers, inc.

Engineers - Surveyors - Architects

560 Sunrise Drive  
Spring Green, WI 53588  
phone: 608-588-7484  
fax: 608-588-9322

THIS DOCUMENT, THE IDEAS AND DESIGNS INCORPORATED HEREIN AS AN INSTRUMENT OF SERVICE, IS THE PROPERTY OF JEWELL ASSOCIATES ENGINEERS, INC. AND IS NOT TO BE USED IN WHOLE OR IN PART WITHOUT PRIOR WRITTEN AUTHORIZATION OF JEWELL ASSOCIATES ENGINEERS, INC.

iiw, P.C.

**iiw**

ARCHITECTURE  
CIVIL ENGINEERING  
CONSTRUCTION SERVICES  
ENVIRONMENTAL ENGINEERING  
LAND SURVEYING  
MUNICIPAL ENGINEERING  
STRUCTURAL ENGINEERING  
TRANSPORTATION ENGINEERING  
INTEGRITY.EXPERTISE.SOLUTIONS

# Great Sauk State Trail Prairie Du Sac/Sauk City Unit Sauk County, Wisconsin

Date  
5/30/2017

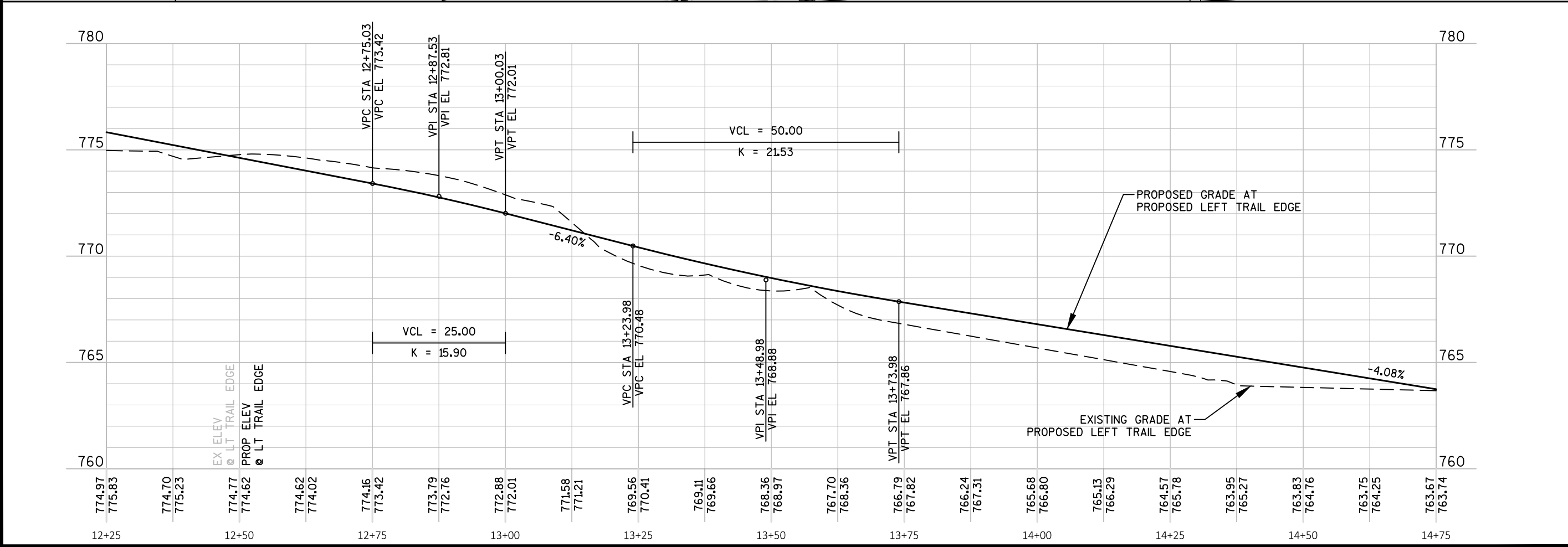
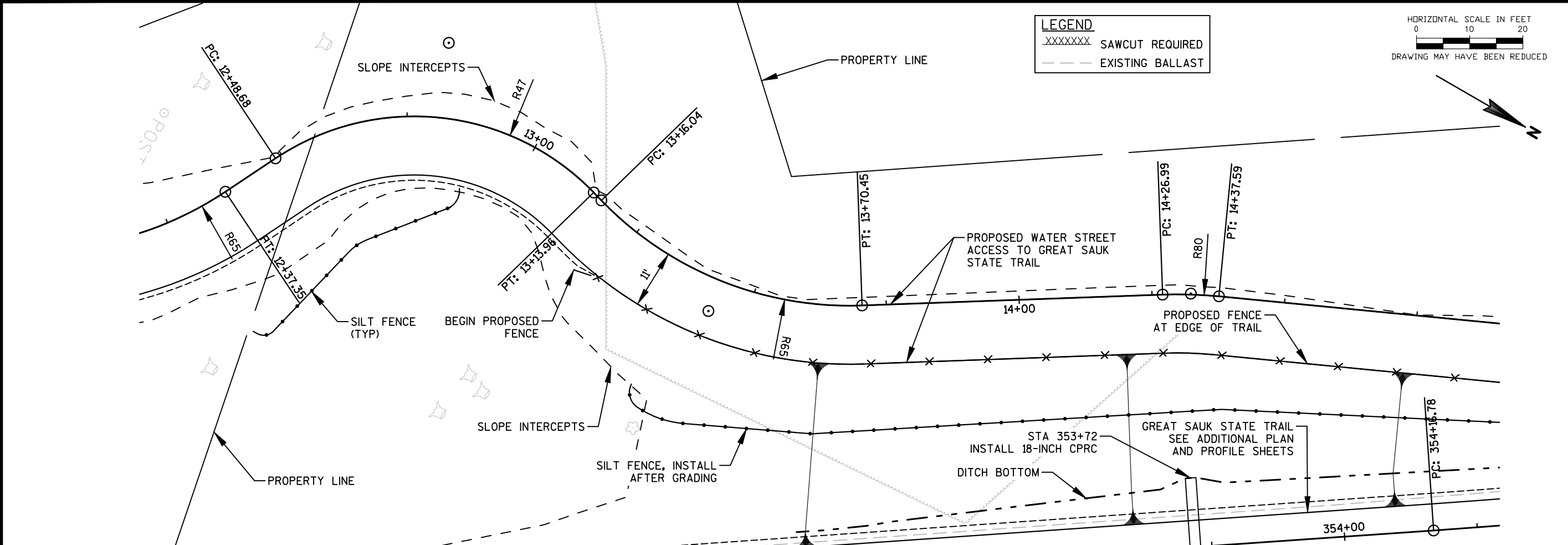

Drawing Name  
**Plan & Profile  
Water Street  
Access Trail Spur**

Sheet Number

**C6.53**

Project Number

**16217**



**JEWELL**  
associates engineers, inc.  
Engineers - Surveyors - Architects

560 Sunrise Drive  
Spring Green, WI 53588  
phone: 608-588-7484  
fax: 608-588-9322

THIS DOCUMENT, THE IDEAS AND DESIGNS INCORPORATED HEREIN AS AN INSTRUMENT OF SERVICE, IS THE PROPERTY OF JEWELL ASSOCIATES ENGINEERS, INC. AND IS NOT TO BE USED IN WHOLE OR IN PART WITHOUT PRIOR WRITTEN AUTHORIZATION OF JEWELL ASSOCIATES ENGINEERS, INC.

iiw, P.C.

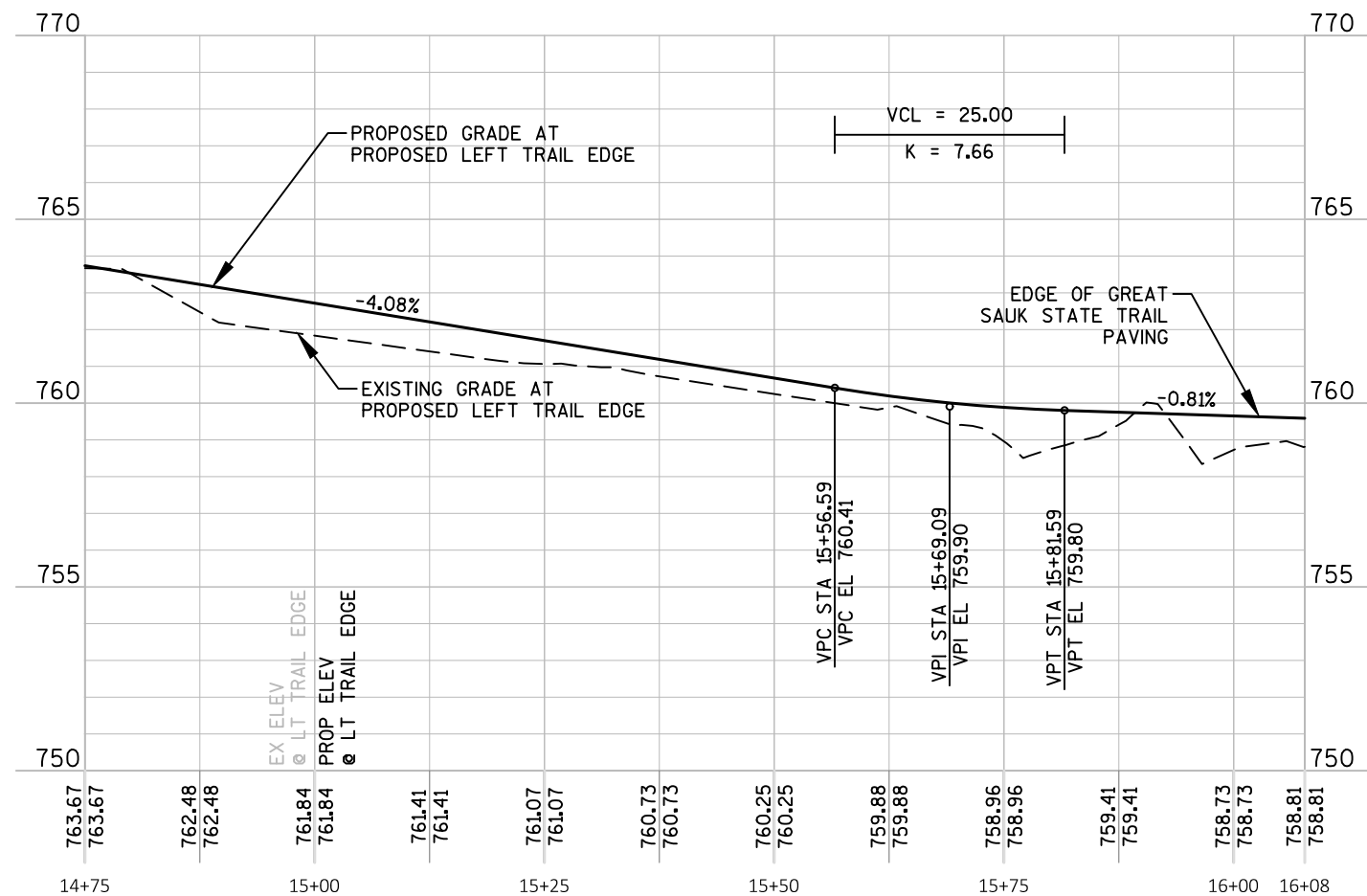
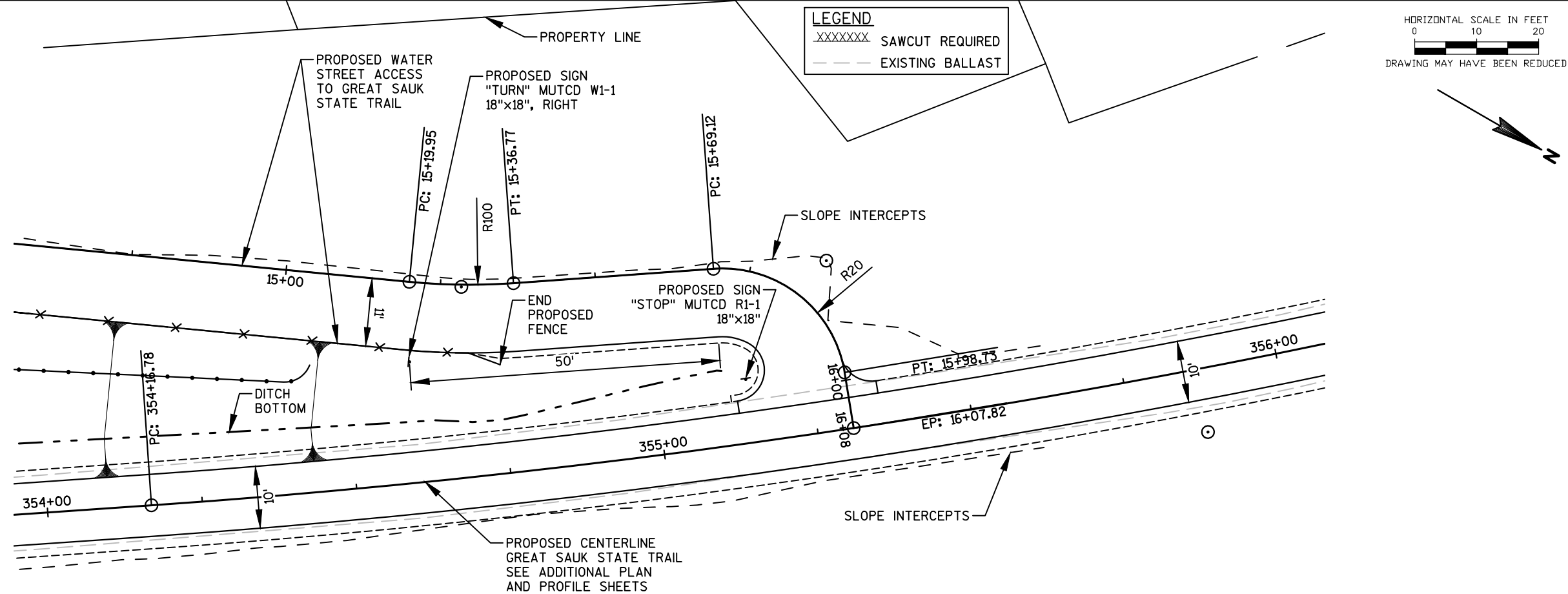
**iiw**  
ARCHITECTURE  
CIVIL ENGINEERING  
CONSTRUCTION SERVICES  
ENVIRONMENTAL ENGINEERING  
LAND SURVEYING  
MUNICIPAL ENGINEERING  
STRUCTURAL ENGINEERING  
TRANSPORTATION ENGINEERING  
INTEGRITY.EXPERTISE.SOLUTIONS

**Great Sauk State Trail  
Prairie Du Sac/Sauk City Unit  
Sauk County, Wisconsin**

Date	5/30/2017
Revision	

Drawing Name  
**Plan & Profile  
Water Street  
Access Trail Spur**

Sheet Number	C6.54
Project Number	16217



HORIZONTAL SCALE IN FEET  
 0 10 20  
 DRAWING MAY HAVE BEEN REDUCED

**JEWELL**  
 associates engineers, inc.  
 Engineers - Surveyors - Architects

560 Sunrise Drive  
 Spring Green, WI 53588  
 phone: 608-588-7484  
 fax: 608-588-9322

THIS DOCUMENT, THE IDEAS AND DESIGNS INCORPORATED HEREIN AS AN INSTRUMENT OF SERVICE, IS THE PROPERTY OF JEWELL ASSOCIATES ENGINEERS, INC. AND IS NOT TO BE USED IN WHOLE OR IN PART WITHOUT PRIOR WRITTEN AUTHORIZATION OF JEWELL ASSOCIATES ENGINEERS, INC.

iiw, P.C.

**iiw**  
 ARCHITECTURE  
 CIVIL ENGINEERING  
 CONSTRUCTION SERVICES  
 ENVIRONMENTAL ENGINEERING  
 LAND SURVEYING  
 MUNICIPAL ENGINEERING  
 STRUCTURAL ENGINEERING  
 TRANSPORTATION ENGINEERING  
 INTEGRITY.EXPERTISE.SOLUTIONS

**Great Sauk State Trail**  
**Prairie Du Sac/Sauk City Unit**  
**Sauk County, Wisconsin**

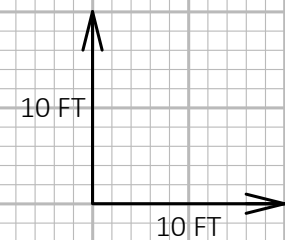
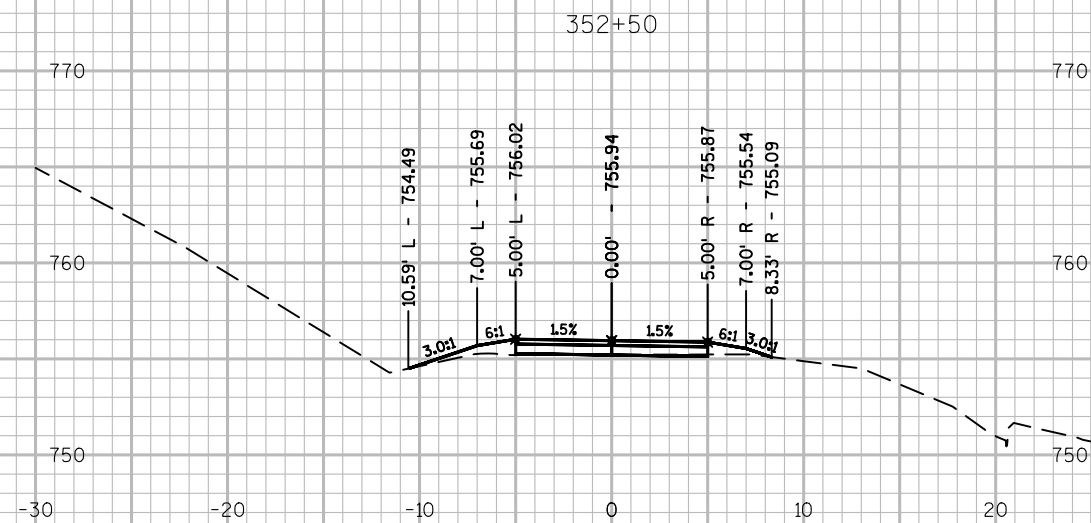
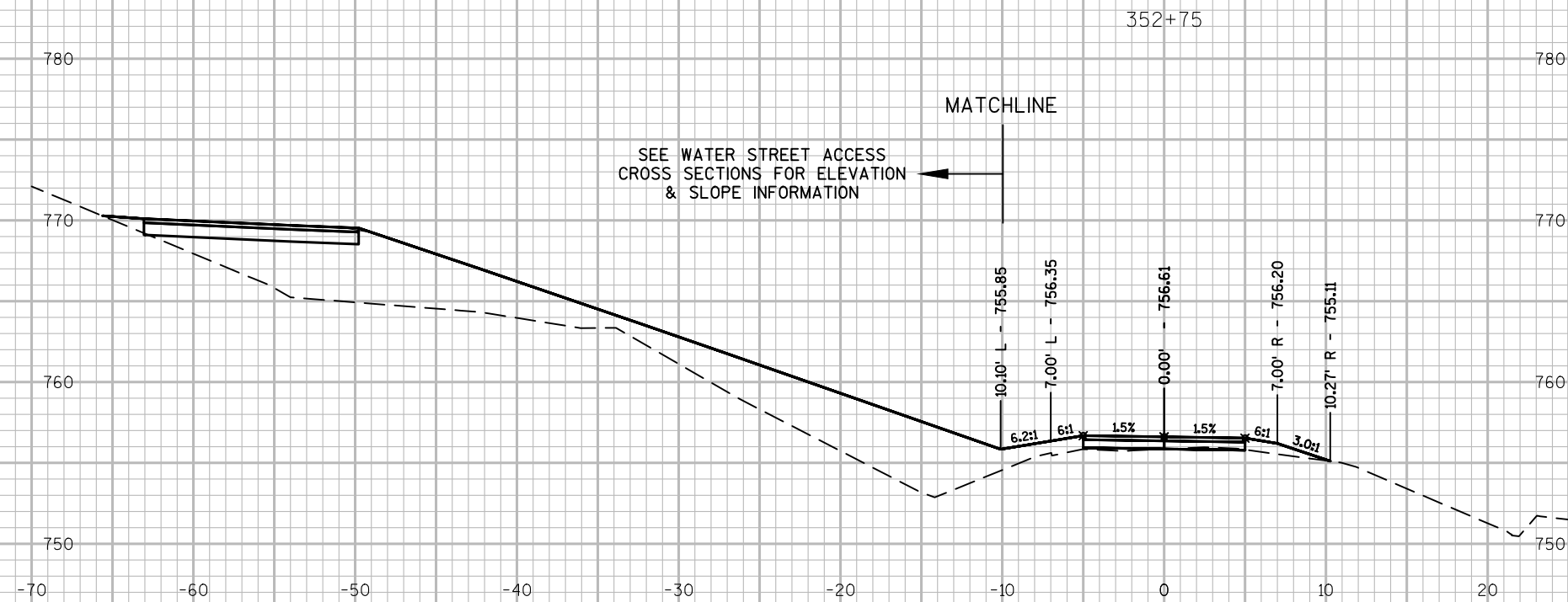
Date  
**5/30/2017**

Date	Revision

Drawing Name  
**Plan & Profile**  
**Water Street**  
**Access Trail Spur**

Sheet Number  
**C6.55**  
 Project Number  
**16217**





PROJECT NO: 16217

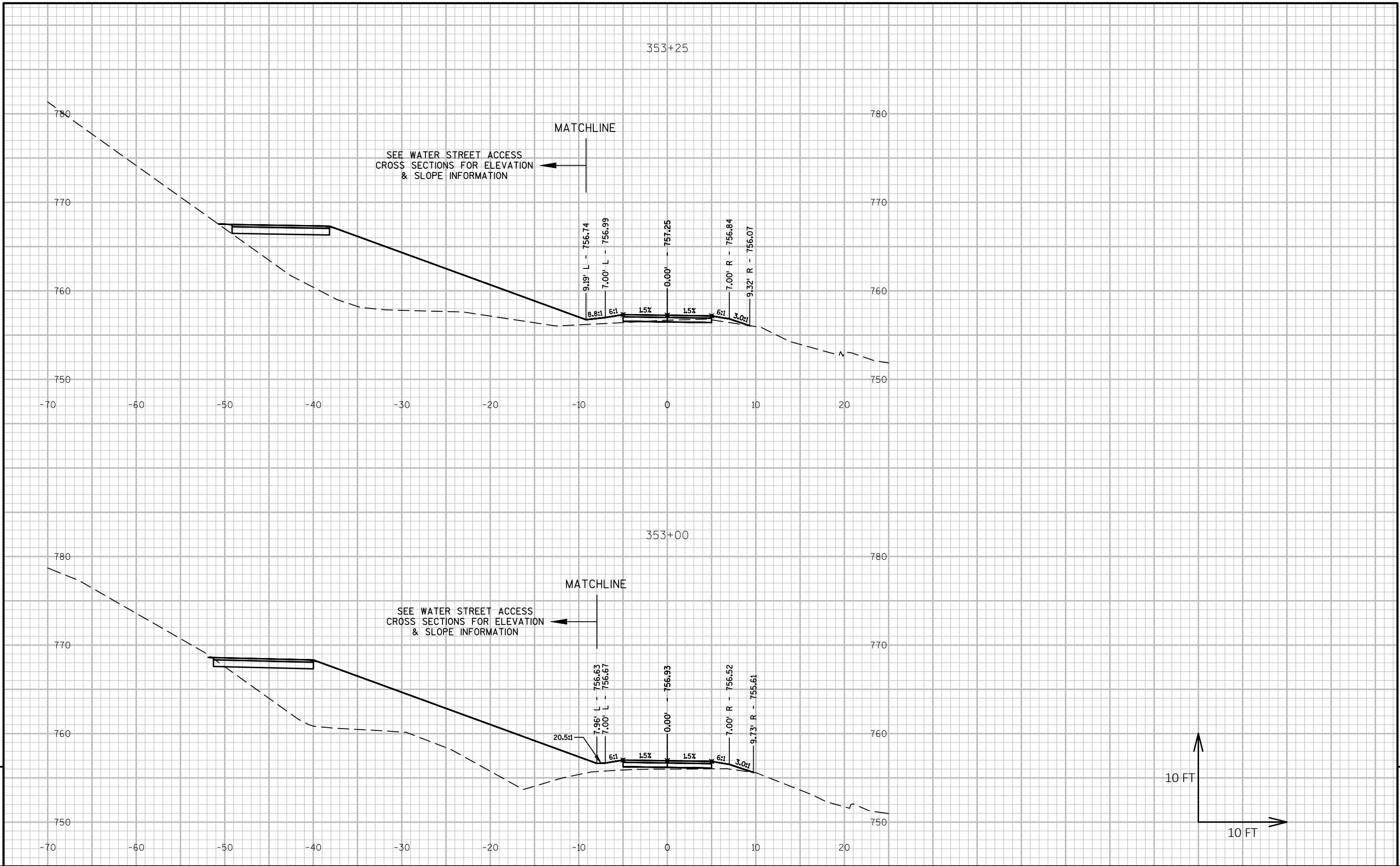
PROJECT: Great Sauk State Trail

COUNTY: Sauk County

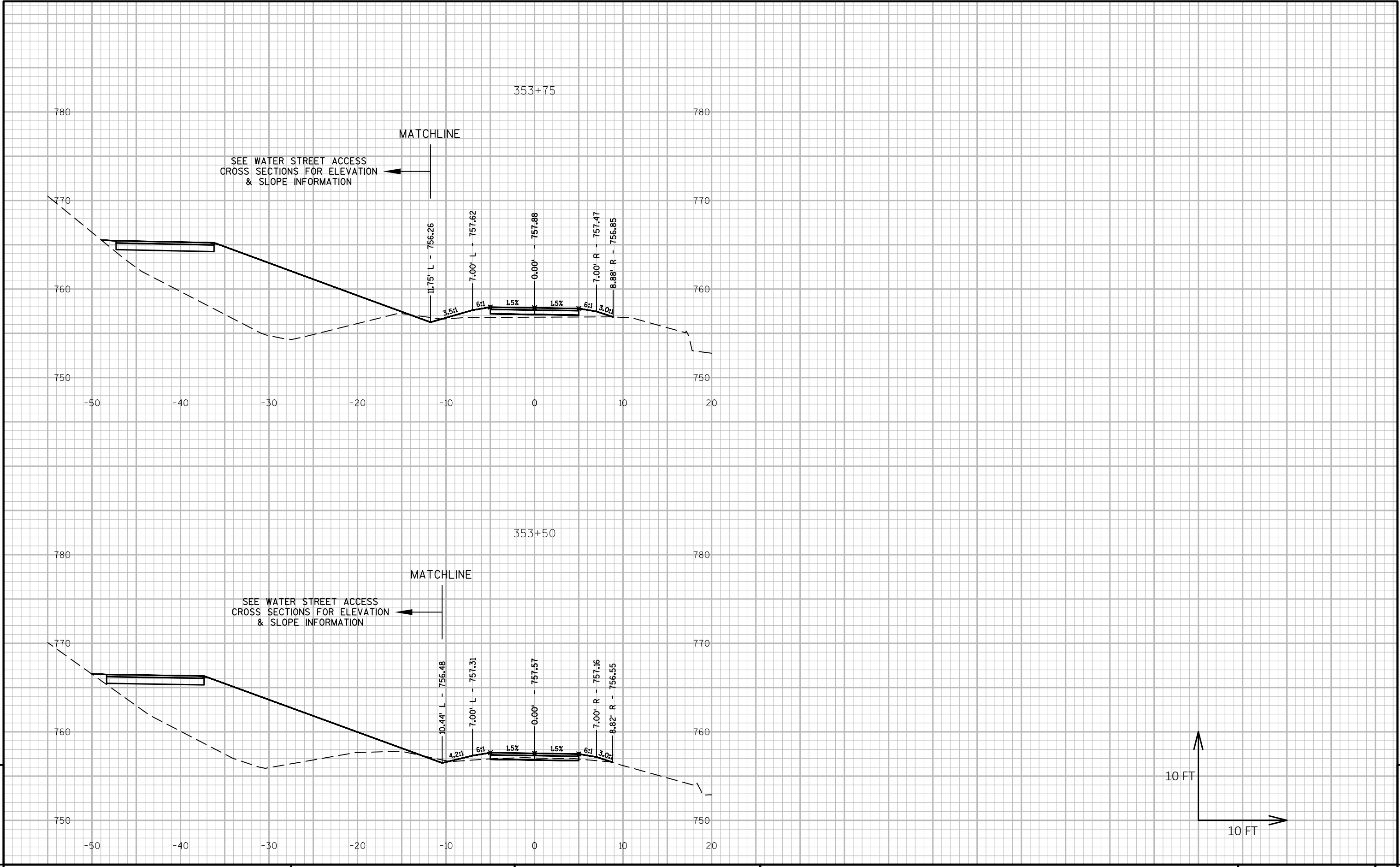
SHEET TITLE: Cross Sections (Mainline, North Of Businesses)

SHEET C7.6

E

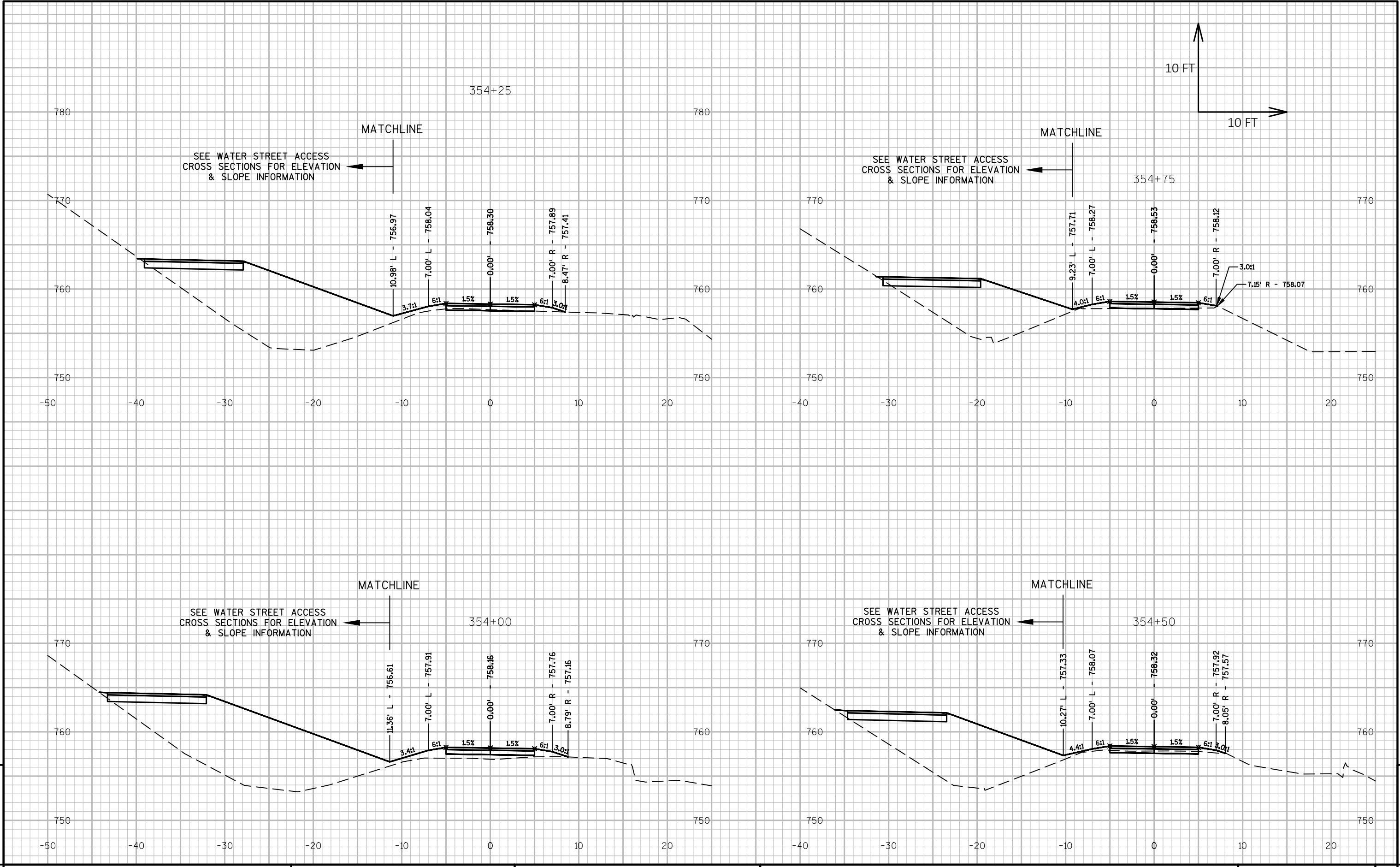


PROJECT NO: 16217	PROJECT: Great Sauk State Trail	COUNTY: Sauk County	SHEET TITLE: Cross Sections (Mainline, North Of Businesses)	SHEET C7.7	E
-------------------	---------------------------------	---------------------	---	------------	---



7

7



7

7

SEE WATER STREET ACCESS  
CROSS SECTIONS FOR ELEVATION  
& SLOPE INFORMATION

MATCHLINE

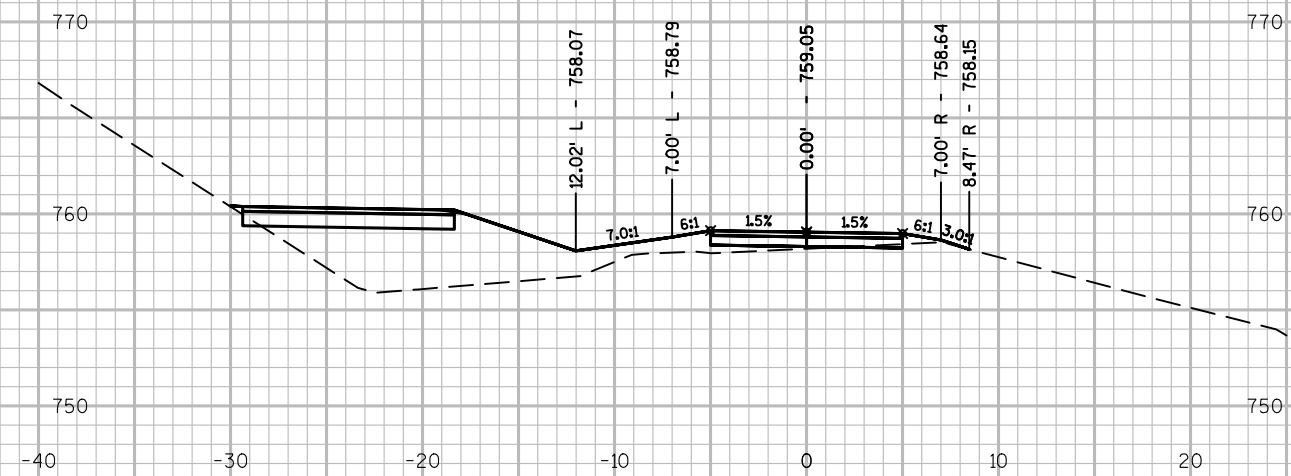
355+25



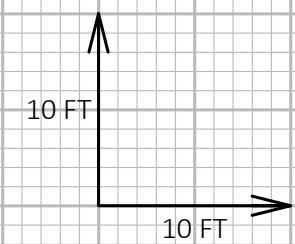
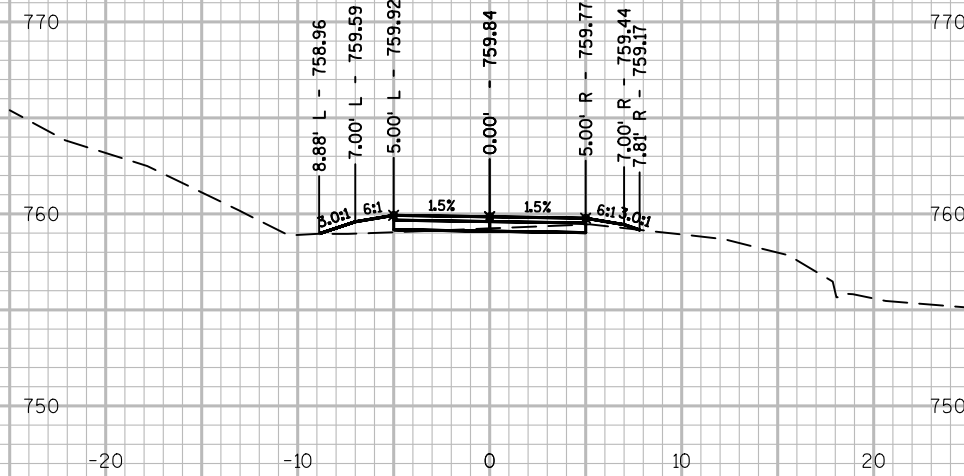
SEE WATER STREET ACCESS  
CROSS SECTIONS FOR ELEVATION  
& SLOPE INFORMATION

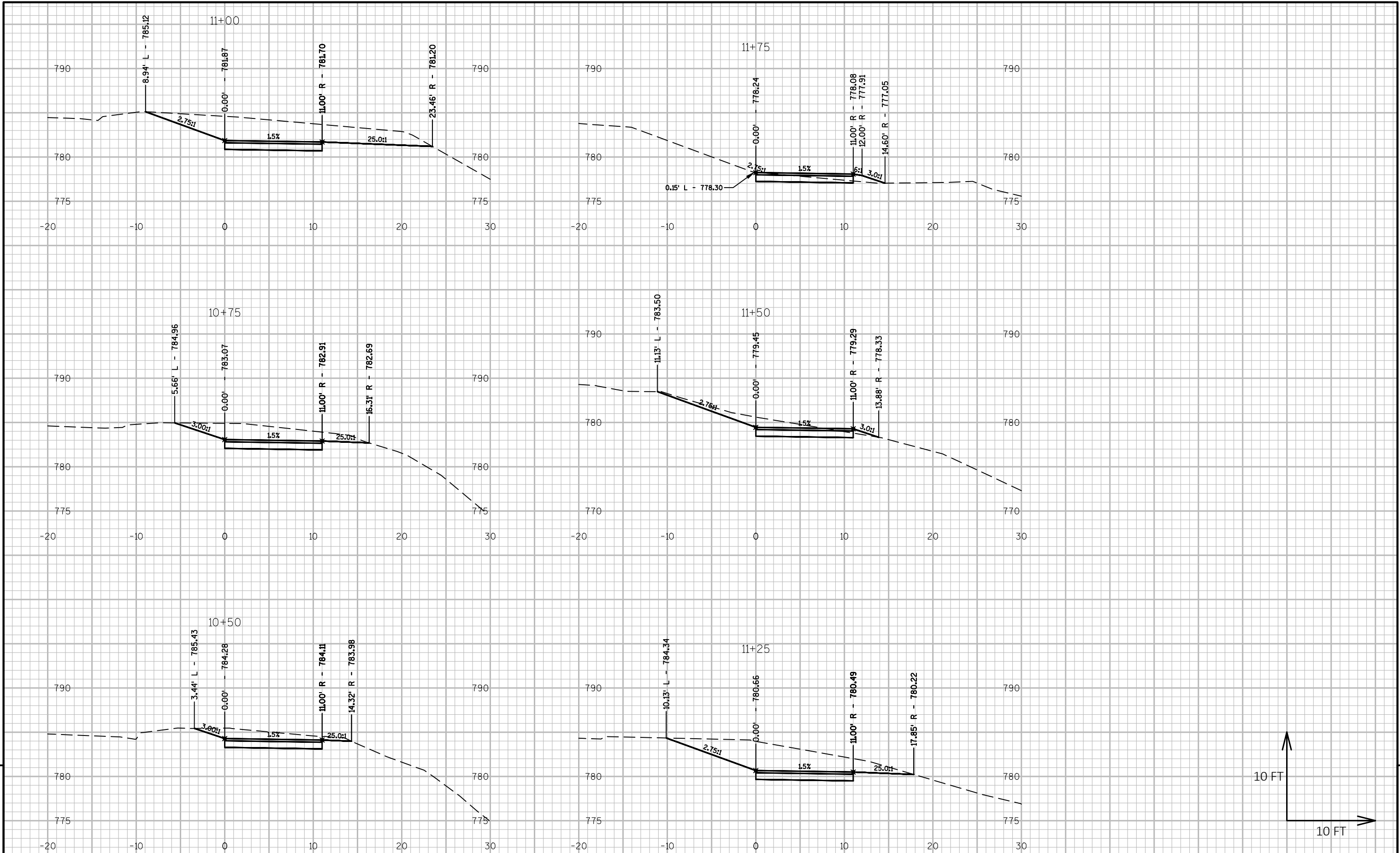
MATCHLINE

355+00

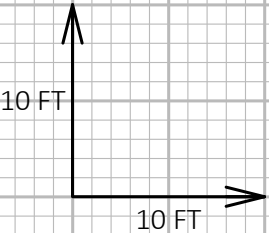
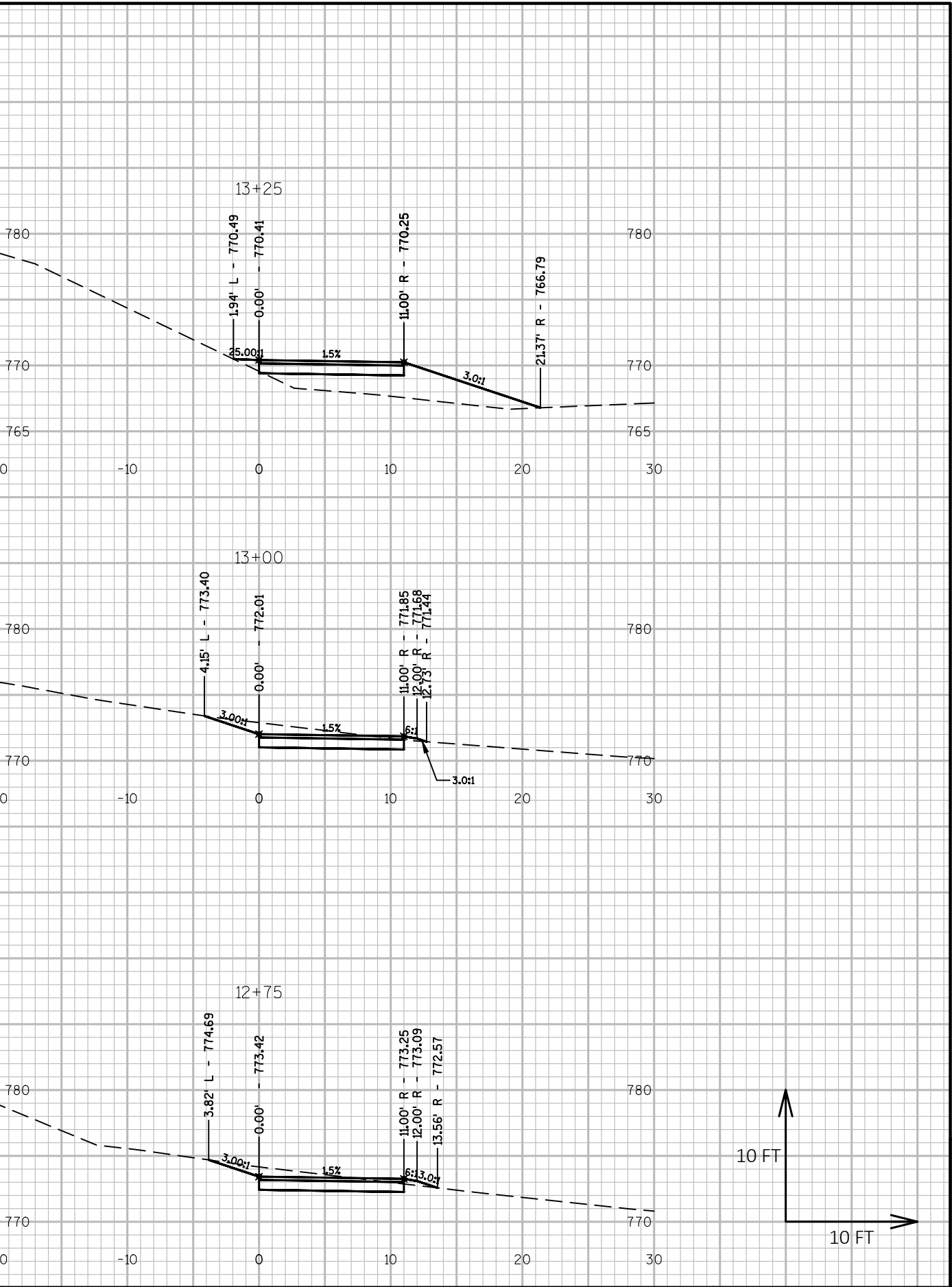
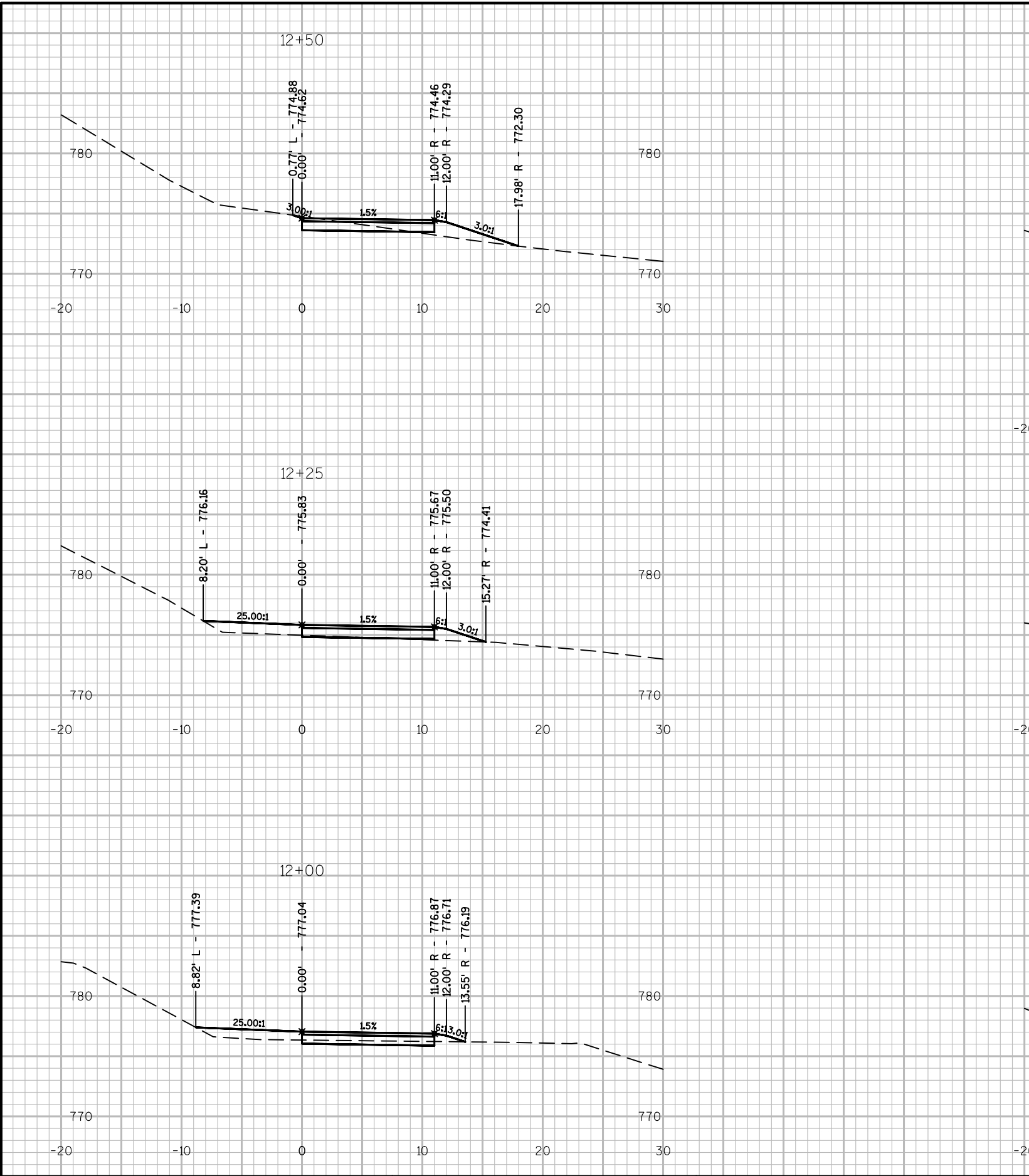


355+50

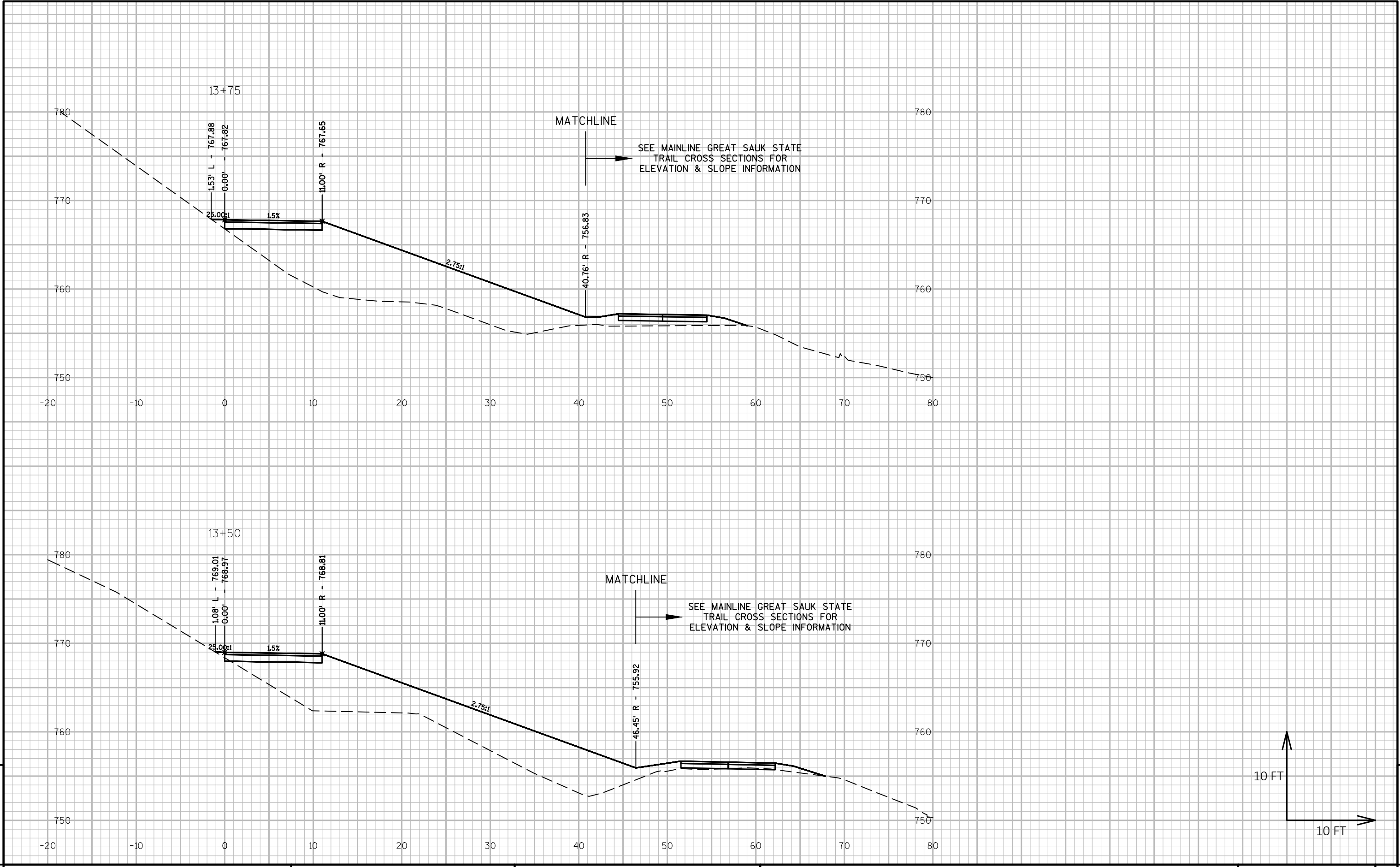




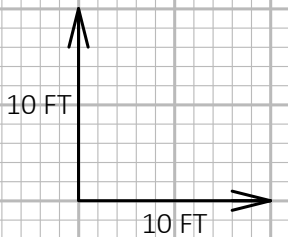
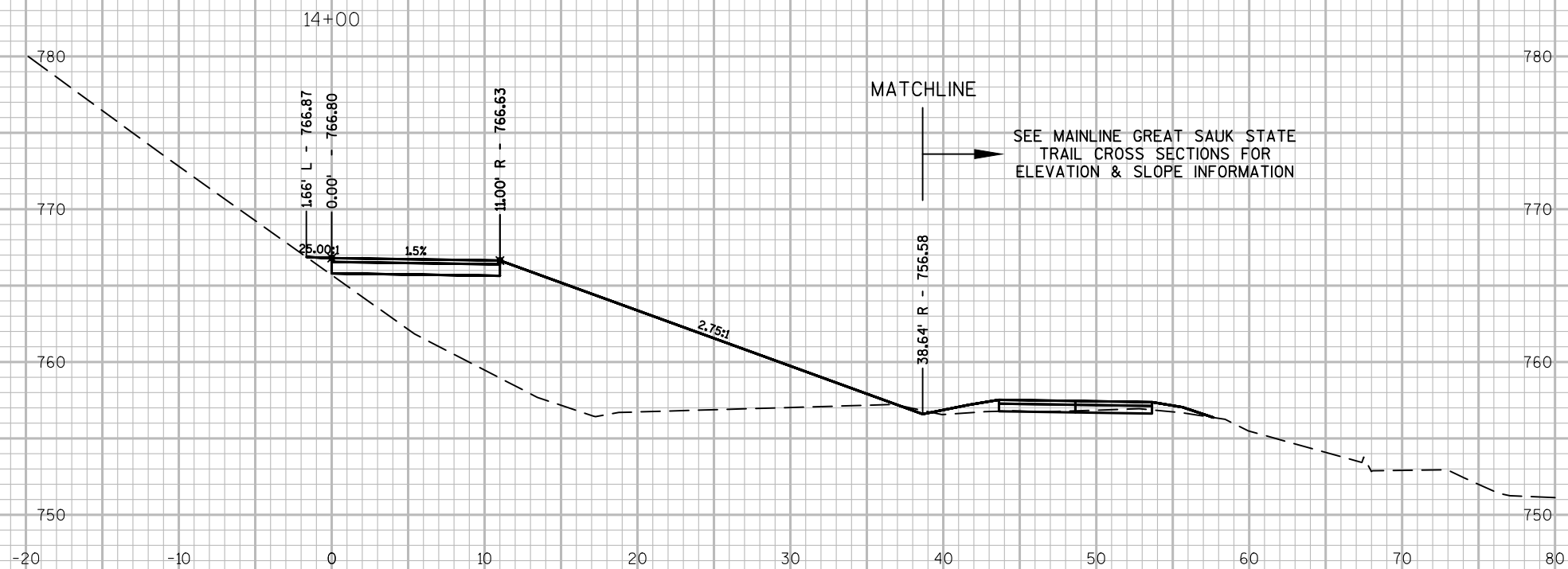
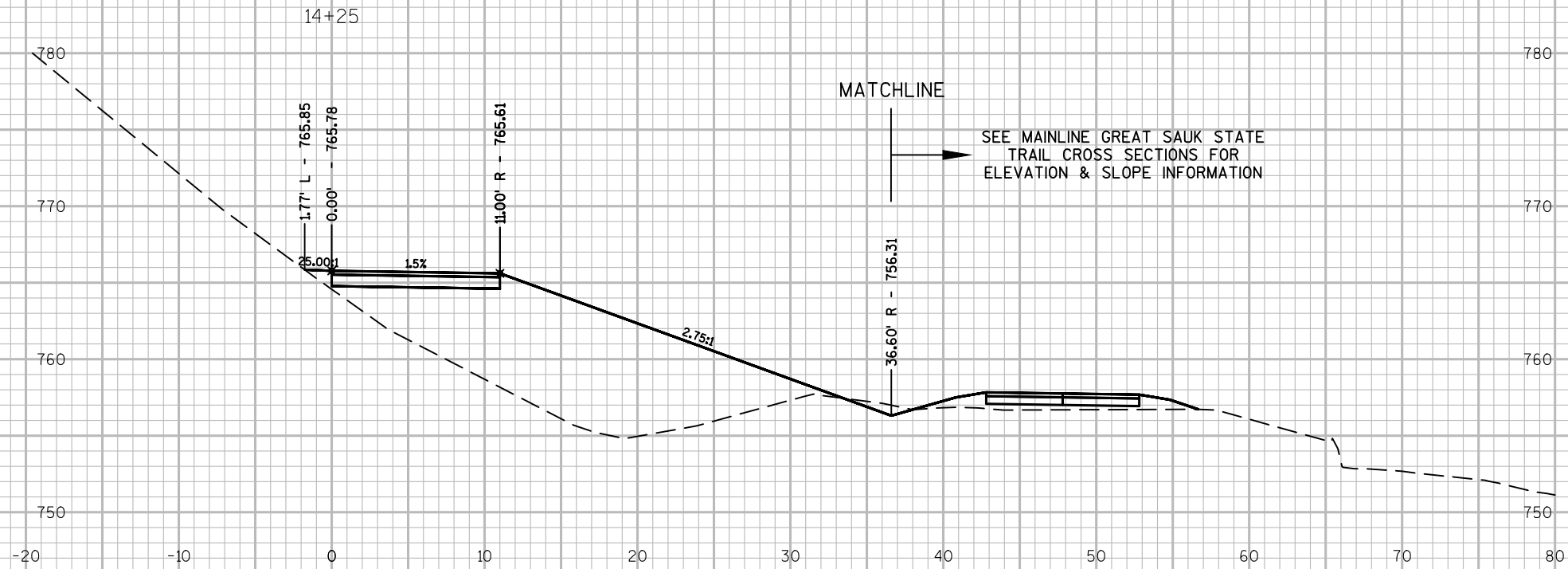
7



7







PROJECT NO: 16217

PROJECT: Great Sauk State Trail

COUNTY: Sauk County

SHEET TITLE: Cross Sections (Water Street Access)

SHEET C7.100

E

FILE NAME : P:\16\217\DRAWINGS\16217\SHEETS\OTHER\070210-XS.DWG  
LAYOUT NAME - C7.14 Cross Sections (Water Street Access)

PLOT DATE : 5/30/2017 8:28 PM

PLOT BY : ERIC URE

PLOT NAME :

PLOT SCALE : 1 IN:10 FT HORZ. / 1 IN:10 FT VERT.

WISDOT/CADDs SHEET 49



