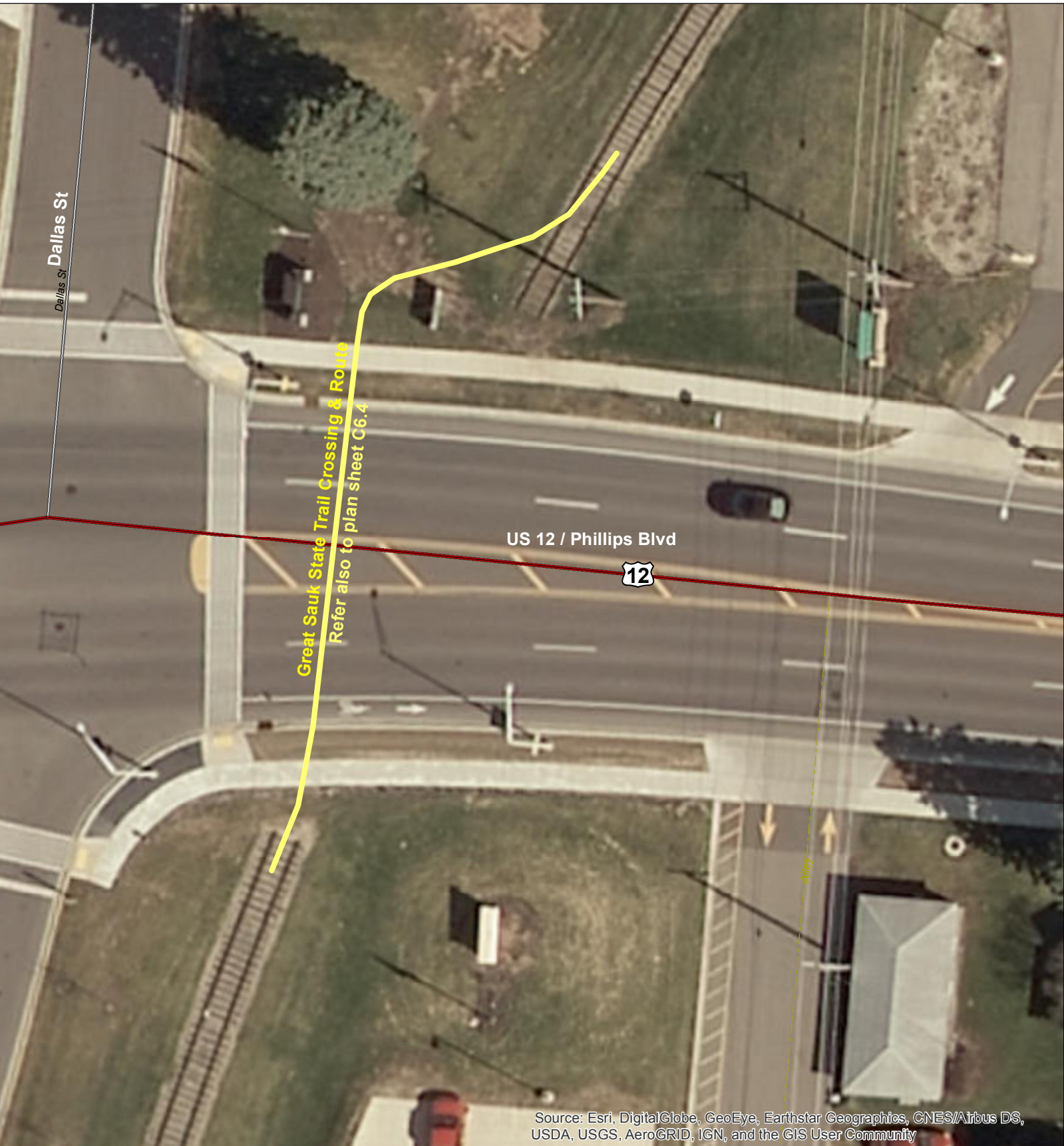


The Great Sauk State Trail US-12 Crossing



Source: Esri, DigitalGlobe, GeoEye, Earthstar Geographics, CNES/Airbus DS, USDA, USGS, AeroGRID, IGN, and the GIS User Community

Legend

- | | |
|-----------------------|----------------------------|
| Town | Muni |
| BAAP Rail Corridor | Alley |
| BAAP Boundary | |
| RoadCenterline | |
| Private-Named | |
| Layer Type | |
| Interstate | Ramp |
| Federal | Snowmobile Trails |
| State | Railway |
| County | Ice Age Trails Sauk County |

Public Lands

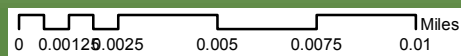
- | | |
|---------------|--------------------|
| County | Fishery Area |
| State | State Natural Area |
| Wildlife Area | DNR Easement |
| TNC Easement | |

Waterbodies

- | |
|-----------------|
| Stream or River |
| Lake or Pond |

Minor Civil Division

- | |
|---------|
| City |
| Town |
| Village |



Sauk County
Conservation, Planning & Zoning

FOR INFORMATIONAL PURPOSES ONLY
Sauk County does not attest to the accuracy
of the data contained herein and makes no
warranty with respect to its completeness or validity.
Data contained on this map is limited by the method
and accuracy of its collection.