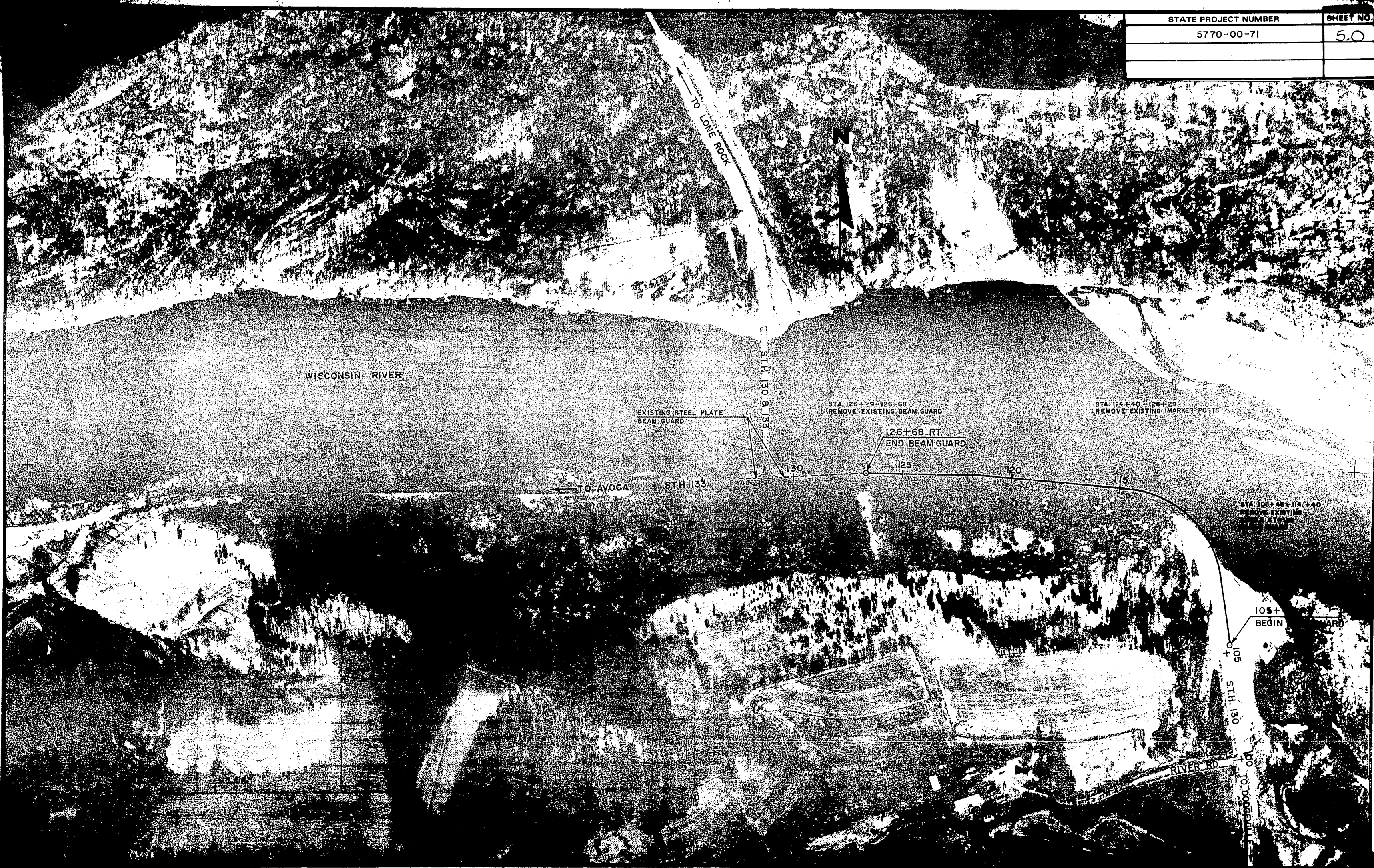


STATE PROJECT NUMBER	SHEET NO.
5770-00-71	5.0

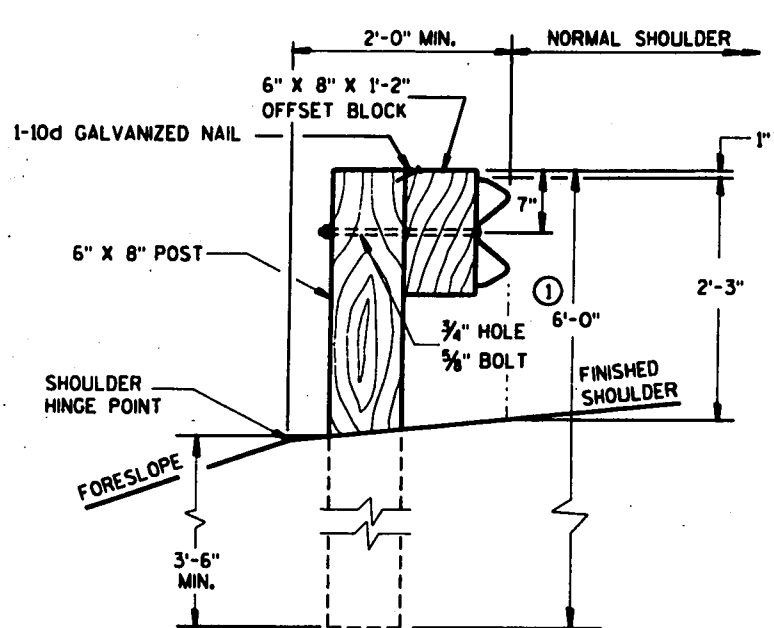


DESIGN NOTE: (WILL NOT APPEAR ON CONTRACT PLANS)  
REFER TO PROCEDURE 11-45-1 FOR GUIDANCE ON THE  
USE OF BEAM GUARD ON CURBED ROADWAYS.

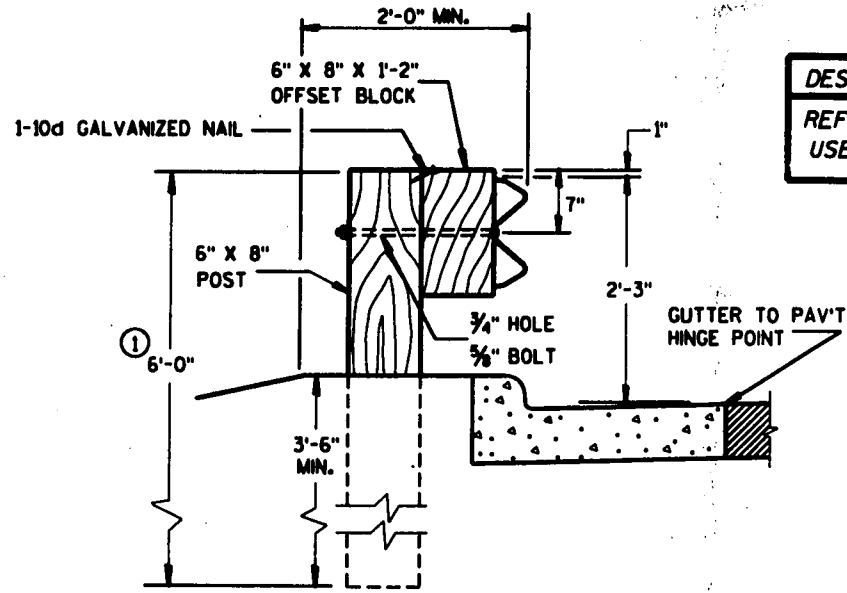
**GENERAL NOTES**

DETAILS OF CONSTRUCTION, MATERIALS AND WORKMANSHIP NOT SHOWN ON THIS DRAWING SHALL CONFORM TO THE PERTINENT REQUIREMENTS OF THE STANDARD SPECIFICATIONS, AND THE APPLICABLE SPECIAL PROVISIONS.

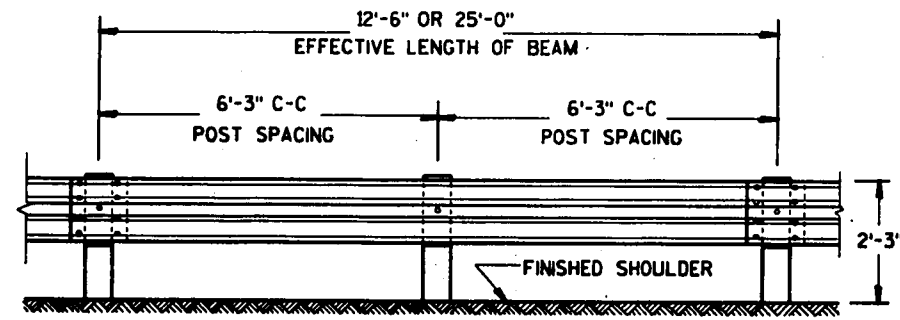
- ① POST LENGTH SHALL BE INCREASED TO PROVIDE A MINIMUM EMBEDMENT OF 3'-6" WHERE THE SHOULDER HINGE POINT IS LOCATED IN FRONT OF THE POST.
- ② PROVIDE TYPE "H" SILVER REFLECTIVE SHEETING ON ALL REFLECTORS EXCEPT THOSE LOCATED ALONG THE LEFT EDGE OF ONE-WAY ROADWAYS, WHICH SHALL BE PROVIDED WITH TYPE "H" YELLOW REFLECTIVE SHEETING.



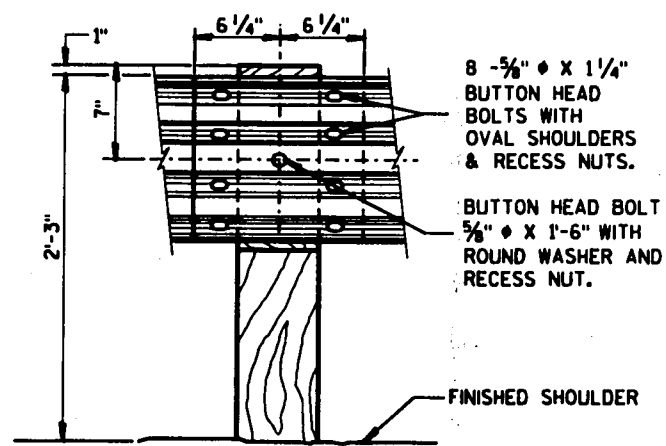
END VIEW  
LOCATED ALONG A ROADWAY SHOULDER



END VIEW  
LOCATED ALONG A CURBED ROADWAY



FRONT VIEW



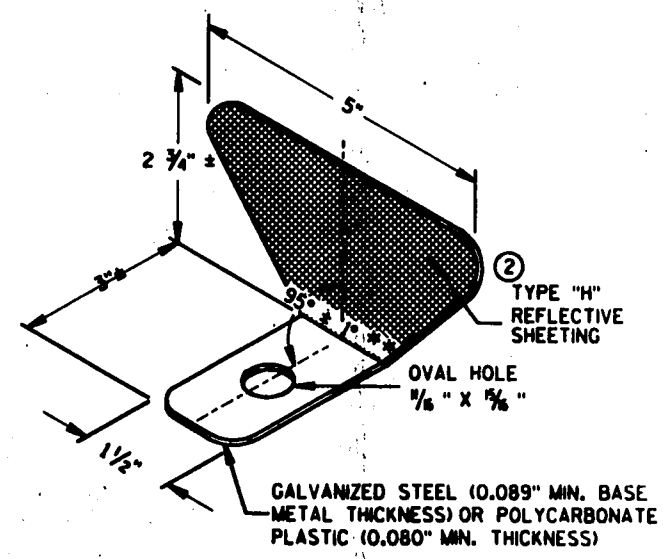
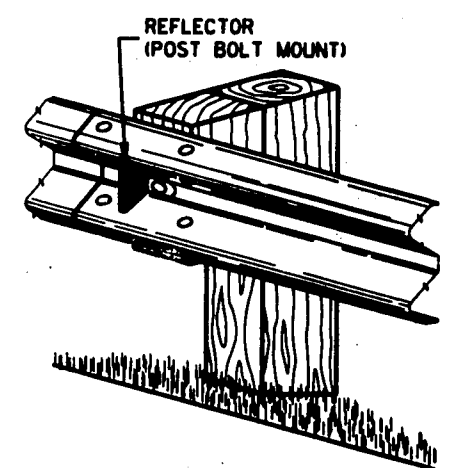
FRONT VIEW  
BEAM SPLICING AND POST MOUNTING DETAIL

**TYPICAL INSTALLATION OF STEEL PLATE BEAM GUARD**

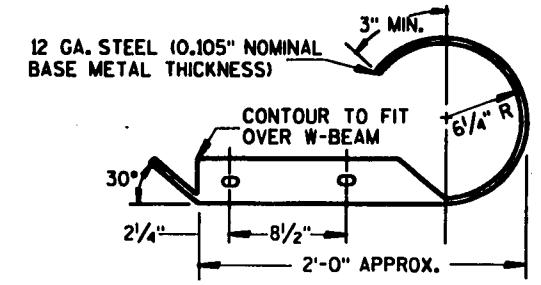
	BEAM GUARD LENGTH	REFLECTOR SPACING	NO. SURFACES REFLECTORIZED	MIN. NO. REFLECTORS
ONE WAY TRAFFIC	< 200'	50' C-C	1	3
	> 200'	100' C-C	1	
TWO WAY TRAFFIC	< 200'	25' C-C	1 *	6
	> 200'	50' C-C	1 *	
TWO WAY TRAFFIC	< 200'	50' C-C	2 **	3
	> 200'	100' C-C	2 **	

\* EVERY OTHER REFLECTOR REVERSED FOR 2-WAY VISIBILITY. CONTRACTOR MAY FURNISH TWO-SIDED REFLECTORS IN LIEU OF ONE-SIDED REFLECTORS.

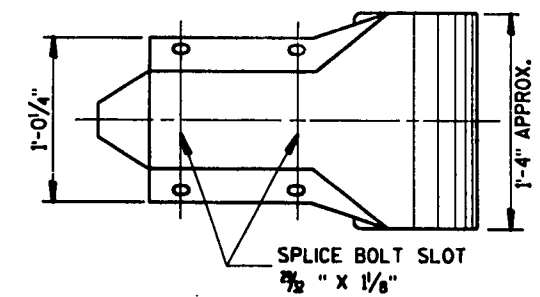
\*\* ANGLE OF BEND TO BE 90° ± 1° FOR TWO-SIDED REFLECTORS.



② REFLECTOR DETAIL AND TYPICAL INSTALLATION

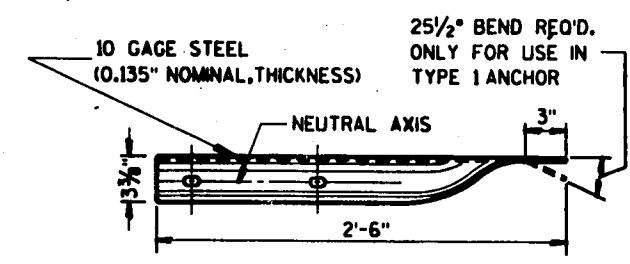


PLAN VIEW

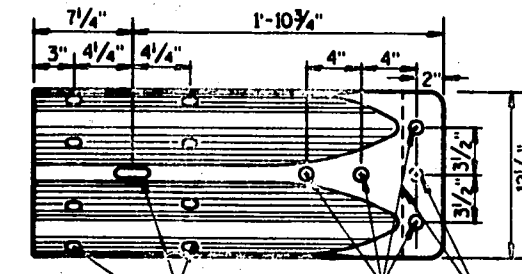


FRONT VIEW

**W BEAM END SECTION (ROUNDED)**

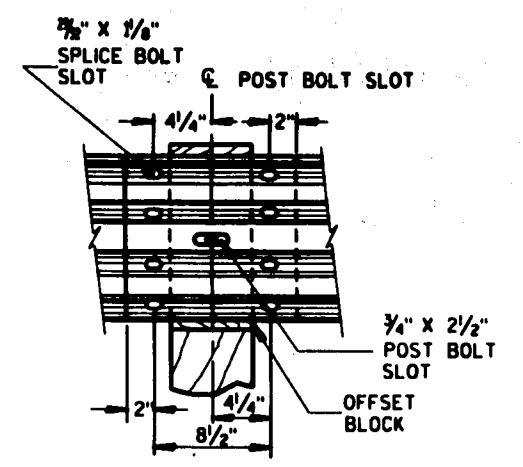


PLAN VIEW

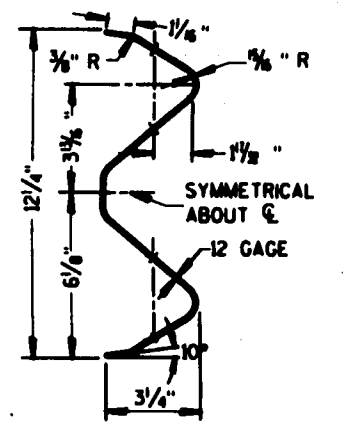


FRONT VIEW

**W BEAM TERMINAL CONNECTOR**



W BEAM SPLICE



SECTION THRU W BEAM

NOTE: SHEETS 1b IS OPTIONAL FOR INCLUSION IN PLANS WHEN APPLICABLE.

**CLASS 'A'**  
**STEEL PLATE BEAM GUARD,**  
**INSTALLATION & ELEMENTS**

STATE OF WISCONSIN  
DEPARTMENT OF TRANSPORTATION

APPROVED

*[Signature]*

DATE

*[Signature]*

STATE DESIGN ENGINEER FOR HWYS

FHWA