

GENERAL NOTES

BEARINGS SHOWN ON THIS PLAN ARE GRID BEARINGS.

DISTANCES SHOWN ON THIS PLAN ARE GROUND DISTANCES.

ELEVATIONS SHOWN ON THIS PLAN ARE REFERENCED TO THE USGS DATUM.

NO TREES OR SHRUBS ARE TO BE REMOVED WITHOUT APPROVAL OF THE ENGINEER.

DRIVEWAYS REMOVED BEYOND THE HIGHWAY RIGHT-OF-WAY LINE SHALL BE REPLACED IN KIND.

THE WISCONSIN DEPARTMENT OF TRANSPORTATION SHALL FURNISH THE CONTRACTOR A MONUMENT FOR THE STRUCTURE WHICH SHALL BE SET IN THE STRUCTURE AS DESIGNATED BY THE ENGINEER.

THE LOCATIONS OF EXISTING AND PROPOSED UTILITY INSTALLATIONS AS SHOWN ON THE PLANS ARE APPROXIMATE. THERE MAY BE OTHER UTILITY INSTALLATIONS WITHIN THE PROJECT AREA THAT ARE NOT SHOWN.

EROSION CONTROL FEATURES AS SHOWN ON THE PLANS ARE SUGGESTED LOCATIONS. EXACT LOCATIONS WILL BE DETERMINED BY THE CONTRACTORS ECIP AND APPROVED BY THE ENGINEER IN CONSULTATION WITH THE DNR.

ALL SIGN LOCATIONS SHALL BE REVIEWED BY THE ENGINEER PRIOR TO INSTALLATION.

ANY CONFLICTING SIGN SHALL BE COVERED OR REMOVED.

SILT FENCE SHALL BE PLACED AS SHOWN ON THE PLANS OR AS DIRECTED BY THE ENGINEER AND IN PLACE PRIOR TO CONSTRUCTION.

5" HMA PAVEMENT TYPE E-0.3 SHALL BE PLACED IN TWO LAYERS. 3" HMA PAVEMENT TYPE E-0.3 SHALL BE PLACED IN THE LOWER LAYER AND 2" HMA PAVEMENT TYPE E-0.3 SHALL BE PLACED IN THE UPPER LAYER.

HMA PAVEMENT WEIGHT CALCULATIONS ARE BASED ON 110 LB/SY/IN.

TAPER HMA PAVEMENT AS SHOWN ON PLAN AND PROFILE SHEET OR AS DIRECTED BY THE ENGINEER.

THE LOW SIDE SHOULDER SLOPE ON SUPERELEVATED SECTIONS EQUALS SUPERELEVATION WHEN SUPERELEVATION IS GREATER THAN 0.04%. IF SUPERELEVATION IS LESS THAN OR EQUAL TO 0.04%, THEN LOW SIDE SHOULDER SLOPE IS 0.04%. HIGH SIDE SHOULDER SLOPE ON SUPERELEVATED SECTIONS EQUALS SUPERELEVATION.

WETLANDS ARE LOCATED IN ALL BUT THE NW QUADRANT OF THE STRUCTURE. EQUIPMENT SHALL NOT BE OPERATED OUTSIDE THE SLOPE INTERCEPT.

ABBREVIATIONS

ABUT.	ABUTMENT	F.F.	FRONT FACE
AECPRC	APRON ENDWALLS FOR CULVERT	MAX.	MAXIMUM
	PIPE REINFORCED CONCRETE	MIN.	MINIMUM
		NORM.	NORMAL
A.D.T.	AVERAGE DAILY TRAFFIC	O.H.	OVERHEAD POWER LINE
B.F.	BACK FACE	P.O.L.	POINT ON LINE
B.M.	BENCH MARK	REQ'D.	REQUIRED
CPRC	CULVERT PIPE REINFORCED CONCRETE	RDWY.	ROADWAY
CTR.	CENTER	R.H.F.	RIGHT HAND FORWARD
C.L.	CENTERLINE	S.E.	SUPERELEVATION
D.	LANE DISTRIBUTION	SPA.	SPACE
D.H.V.	DESIGN HOURLY VOLUME	STA.	STATION
DIA.	DIAMETER	SYM.	SYMMETRICAL
DIM.	DIMENSION	T.	PERCENT OF TRUCKS
EL. OR ELEV.	ELEVATION	TYP.	TYPICAL
EXC.	EXCAVATION	V.	DESIGN SPEED

STANDARD DETAIL DRAWINGS

8D2-4	CONCRETE SURFACE DRAIN FLUME TYPE AT STRUCTURES
8E8-3	TYPICAL INSTALLATIONS OF EROSION BALES/TEMPORARY DITCH CHECKS
8E9-6	SILT FENCE
8E11-2	TURBIDITY BARRIER
8F1-11	APRON ENDWALLS FOR CULVERT PIPE
8F4-5	JOINT TIES FOR CONCRETE PIPE
12A3-8	NAME PLATE (STRUCTURES)
13B2-4	CONCRETE PAVEMENT APPROACH SLAB
14B15-4a & b	STEEL PLATE BEAM GUARD, CLASS "A" INSTALLATION & ELEMENTS
14B18-4a	STEEL PLATE BEAM GUARD, CLASS "A" (AT BRIDGE, OBSTACLES AND SIDE ROAD/DRIVEWAYS)
14B20-6a	STEEL THRIE BEAM STRUCTURE APPROACH
14B20-6b	STEEL THRIE BEAM STRUCTURE APPROACH, CONNECTION TO SQUARE END AND VERTICLE FACED PARAPETS
14B24-4a, b & c	STEEL PLATE BEAM GUARD ENERGY ABSORBING TERMINAL
15A3-1	MARKER POST, FLEXIBLE, FOR CULVERT END
15C2-4a & b	BARRICADES AND SIGNS FOR MAINLINE CLOSURES
15C6-4	SIGNING & MARKING FOR TWO LANE BRIDGES
15C8-9a	PAVEMENT MARKING (MAINLINE)

DNR LIAISON

CATHY BLESER  
WISCONSIN DNR  
SOUTH CENTRAL REGION HEADQUARTERS  
3911 FISH HATCHERY ROAD  
FITCHBURG, WI 53711-5397  
PH: (608) 275-3308

DESIGN CONSULTANT

SARA GRIMME, P.E.  
STRAND ASSOCIATES  
PH: (608) 251-4843

UTILITIES

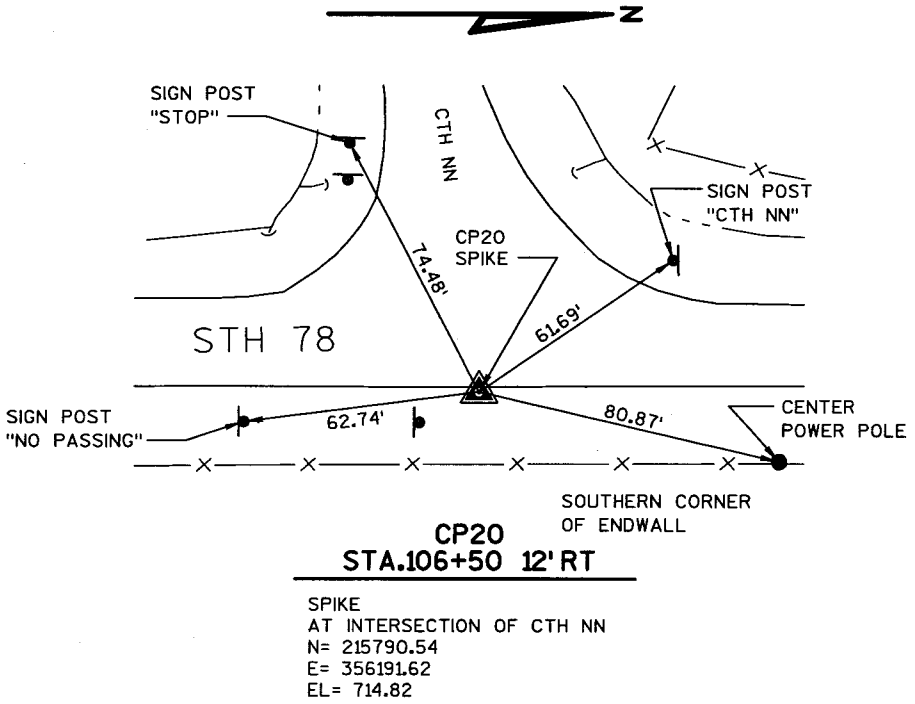
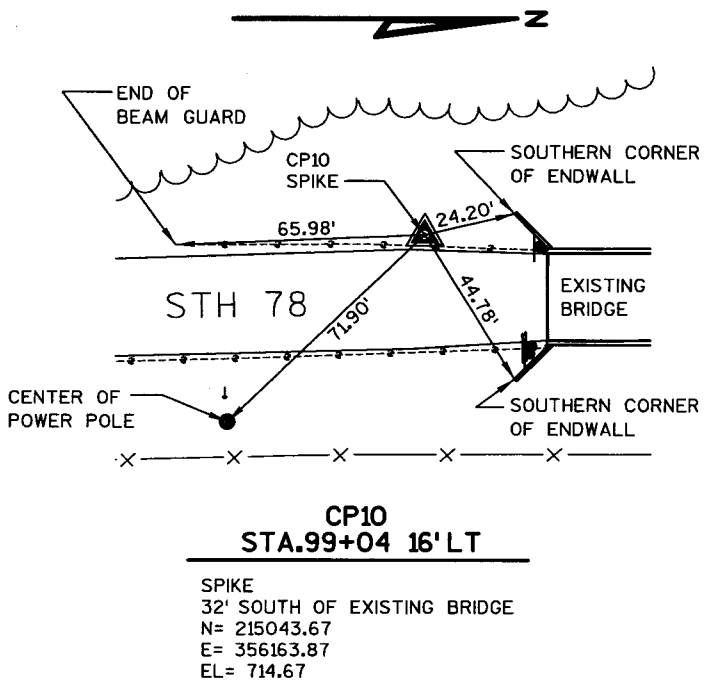
VERIZON NORTH, INC.  
KEVIN SCHILTZ  
2222 W. WISCONSIN ST.  
PORTAGE, WI 53901  
PH: (608) 742-9513

ALLIANT ENERGY CORP.  
JAY RUNDE  
P.O. BOX 769  
DUBUQUE, IA 52004-0769  
PH: (608) 987-4254

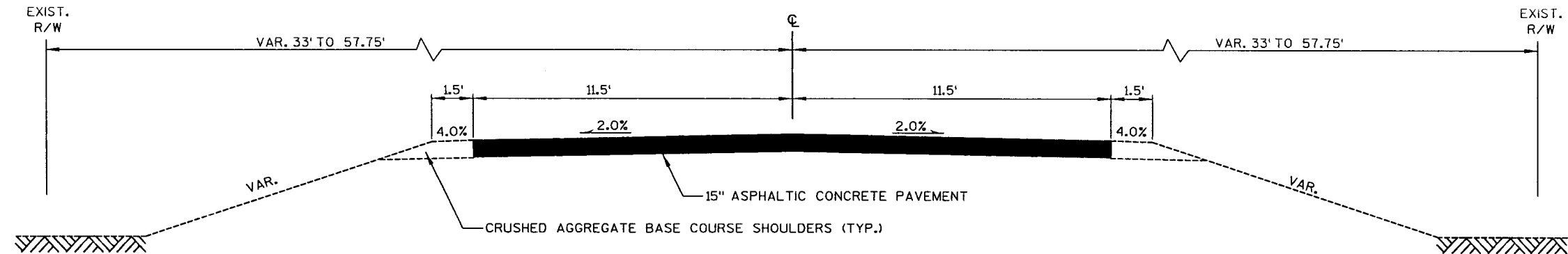


Toll Free (800) 242-8511  
Milwaukee Area (414) 259-1181  
Hearing Impaired TDD (800) 542-2289  
www.DiggersHotline.com  
\*\*Denotes not a member of Diggers Hotline

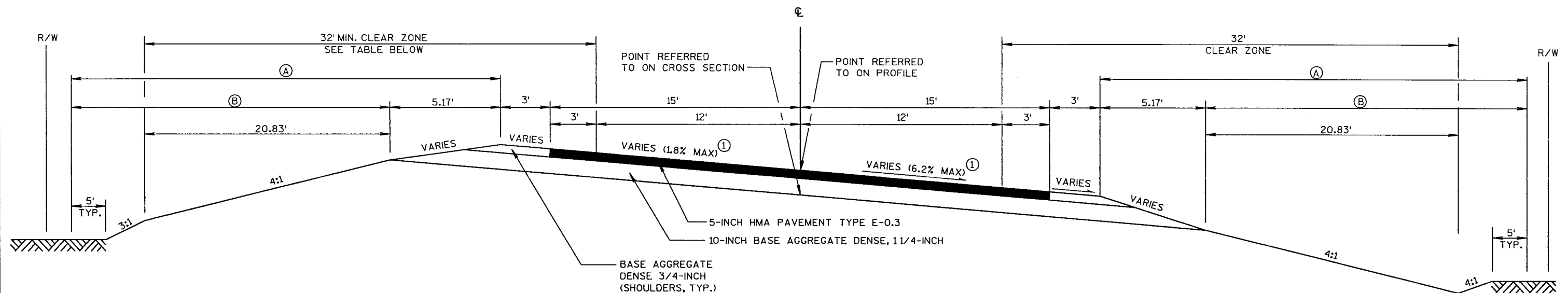
CONSTRUCTION CONTROL POINTS







EXISTING TYPICAL SECTION  
STH 130

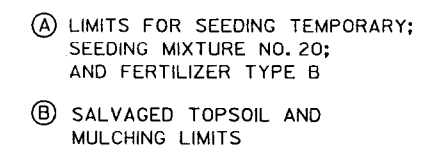
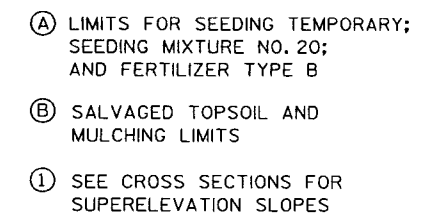


CLEAR ZONE REQ'D. ON OUTSIDE OF HORIZONTAL CURVE	
DEGREE OF CURVE	CLEAR ZONE REQ'D.
4°50'	45.5'

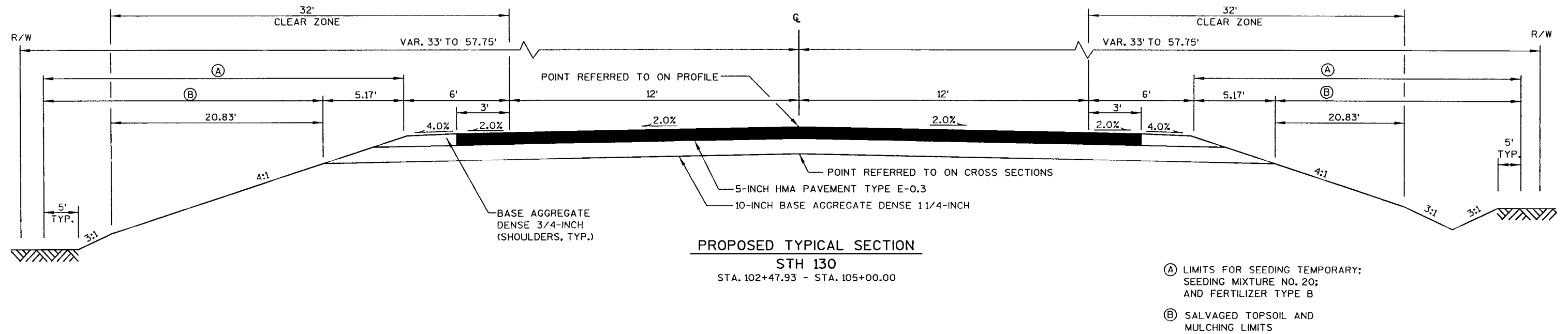
PROPOSED TYPICAL SECTION - SUPERELEVATED  
STA. 97+00 TO STA. 97+50.43

- ① LIMITS FOR SEEDING TEMPORARY; SEEDING MIXTURE NO. 20; AND FERTILIZER TYPE B
- ② SALVAGED TOPSOIL AND MULCHING LIMITS
- ③ SEE CROSS SECTIONS FOR SUPERELEVATION SLOPES







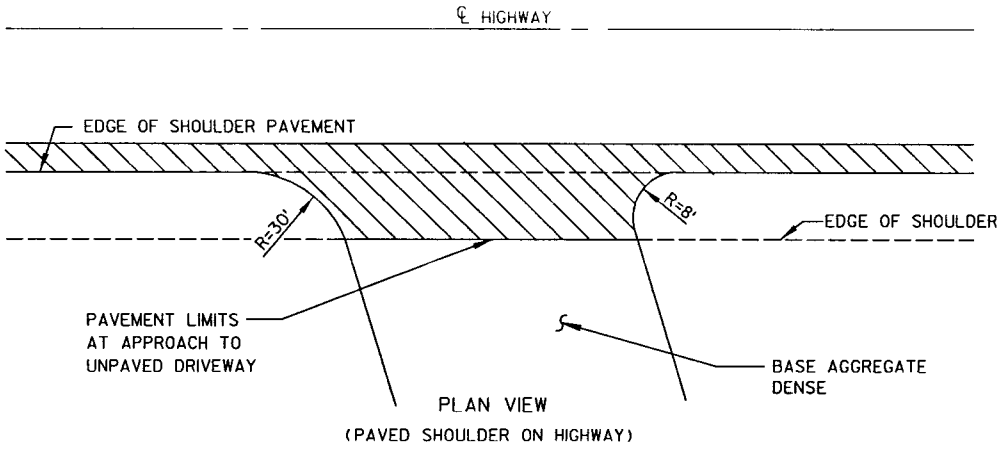




RUNOFF COEFFICIENT TABLE

	HYDROLOGIC SOIL GROUP											
	A			B			C			D		
	SLOPE RANGE (PERCENT)			SLOPE RANGE (PERCENT)			SLOPE RANGE (PERCENT)			SLOPE RANGE (PERCENT)		
LAND USE:	0-2	2-6	6 & OVER	0-2	2-6	6 & OVER	0-2	2-6	6 & OVER	0-2	2-6	6 & OVER
ROW CROPS	.08	.16	.22	.12	.20	.27	.15	.24	.33	.19	.28	.38
	.22	.30	.38	.26	.34	.44	.30	.37	.50	.34	.41	.56
MEDIAN STRIP-TURF	.19	.20	.24	.19	.22	.26	.20	.23	.30	.20	.25	.30
	.24	.26	.30	.25	.28	.33	.26	.30	.37	.27	.32	.40
SIDE SLOPE-TURF			.25			.27			.28			.30
			.32			.34			.36			.38
PAVEMENT:												
ASPHALT						.70 - .95						
CONCRETE						.80 - .95						
BRICK						.70 - .80						
DRIVES, WALKS						.75 - .85						
ROOFS						.75 - .95						
GRAVEL ROADS, SHOULDERS						.40 - .60						

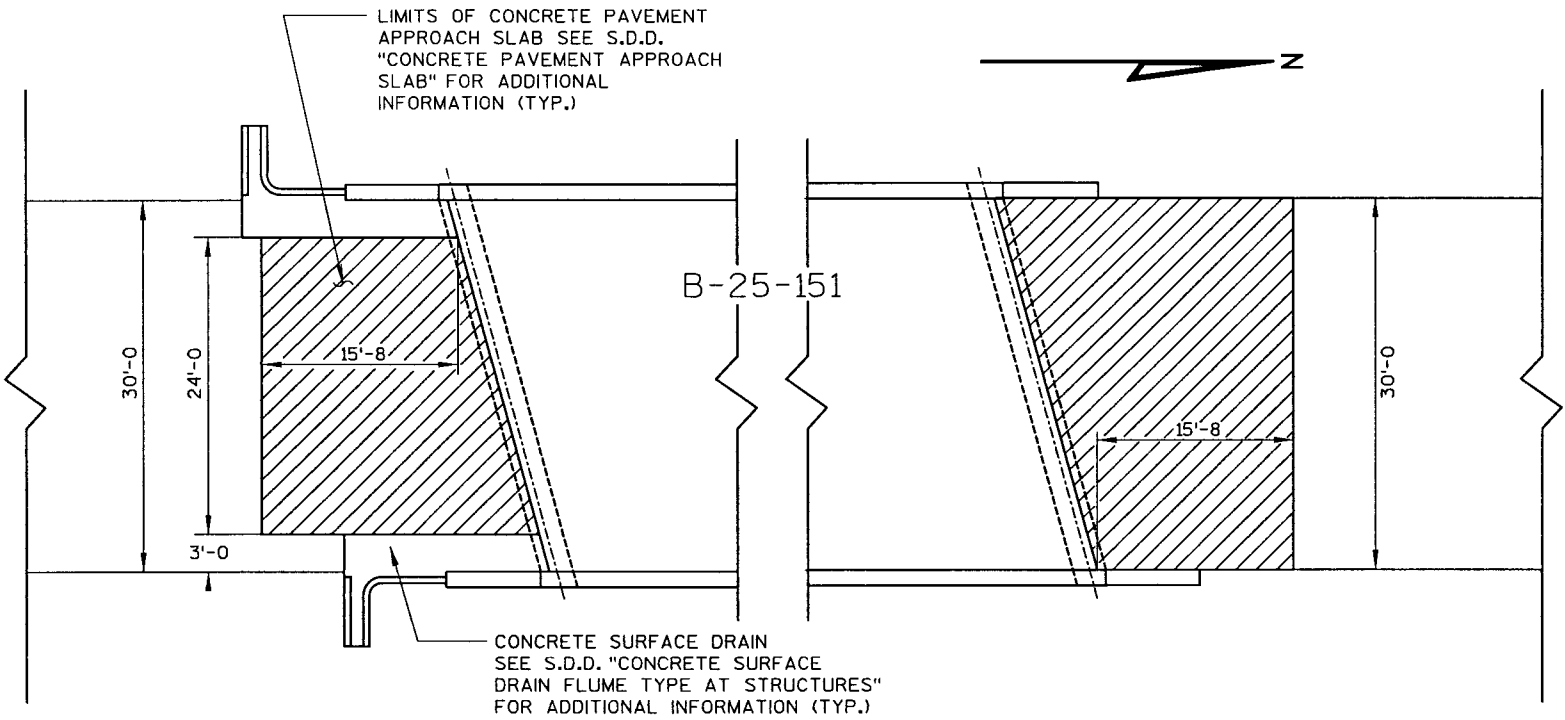
TOTAL PROJECT AREA = 1.55 ACRES  
TOTAL AREA EXPECTED TO BE DISTURBED BY CONSTRUCTION ACTIVITIES = 1.30 ACRES



RURAL DRIVEWAY INTERSECTION DETAIL

STA. 102+76 LT

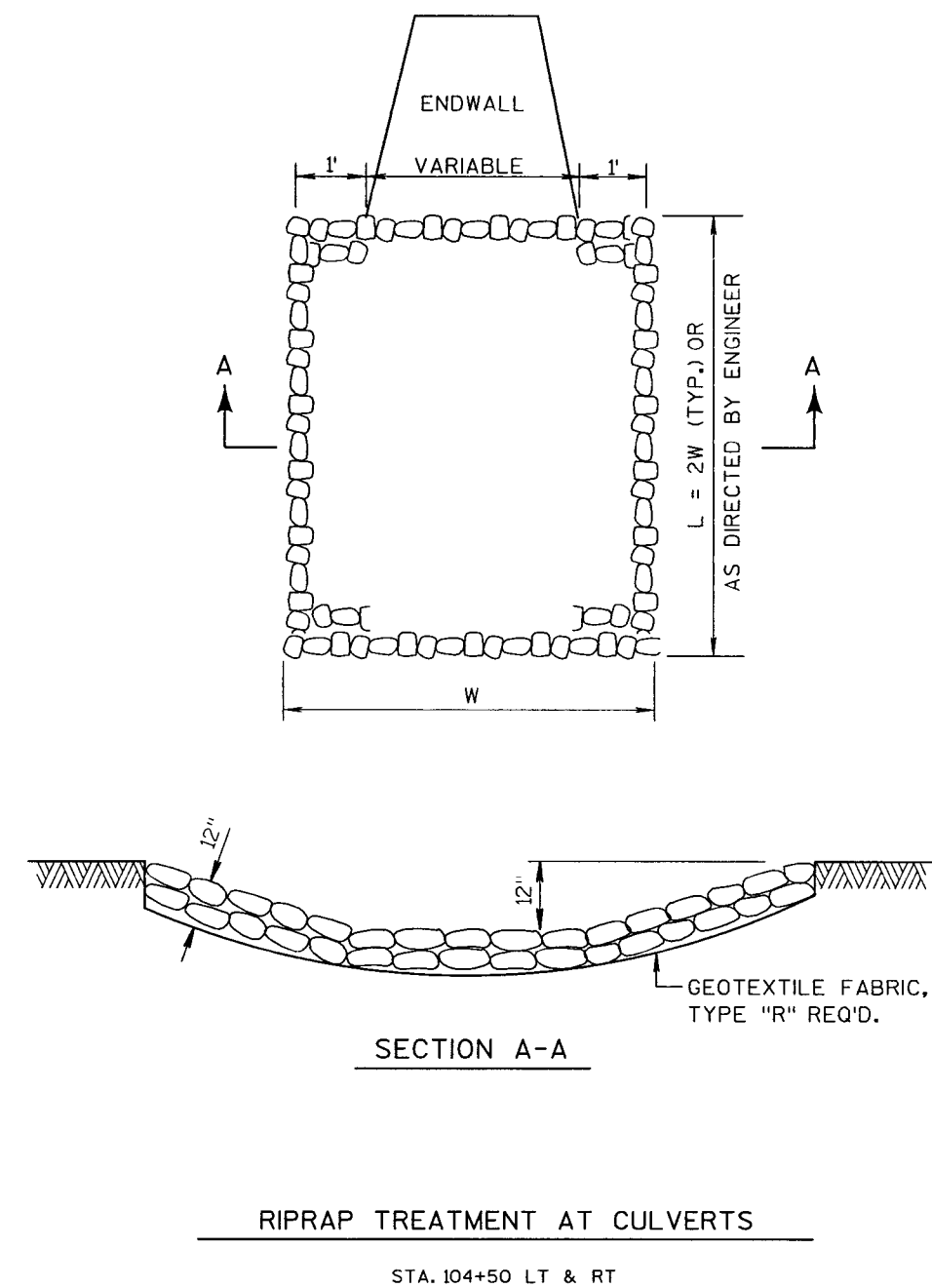
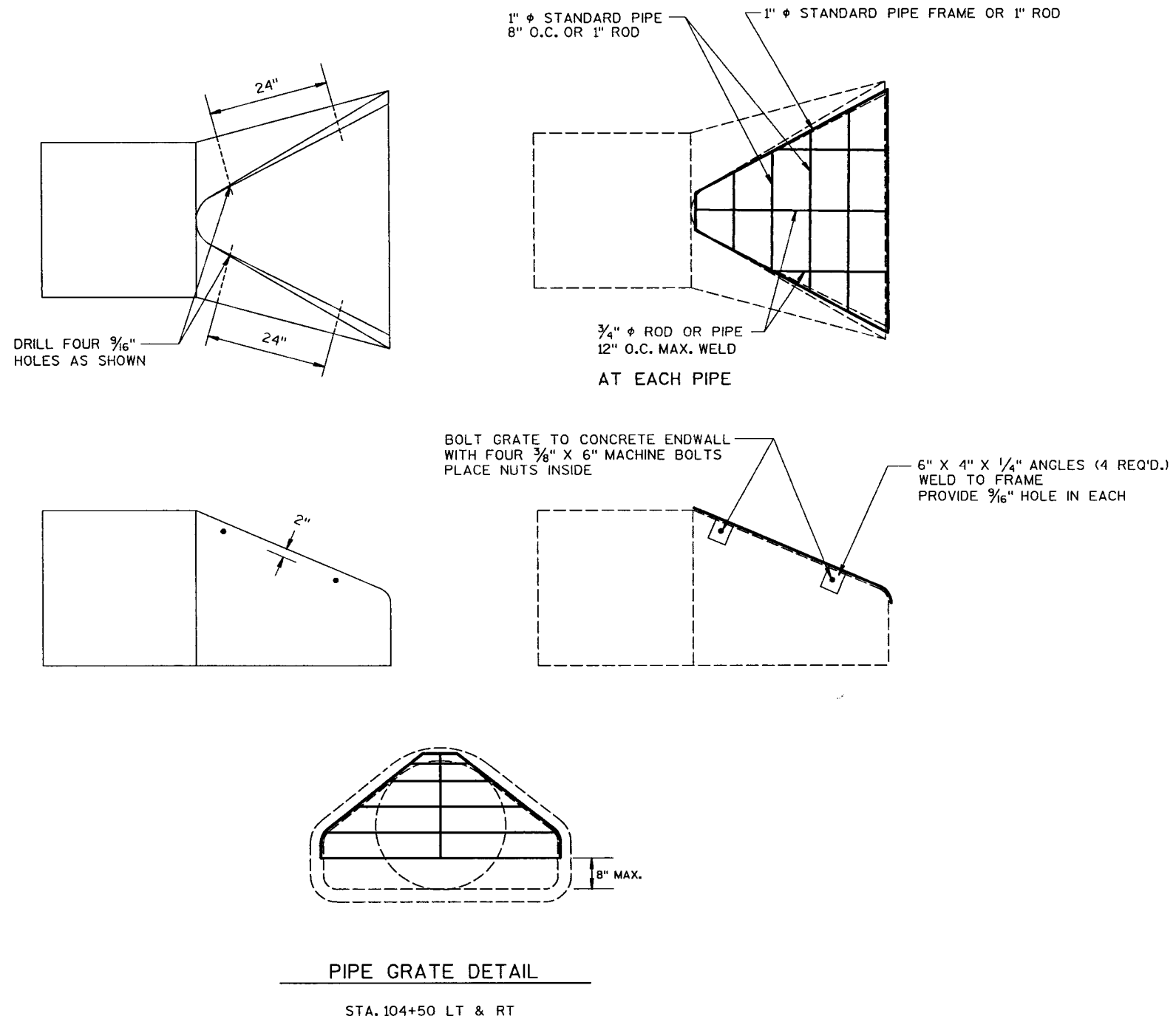
HMA PAVEMENT  
TYPE E-0.3



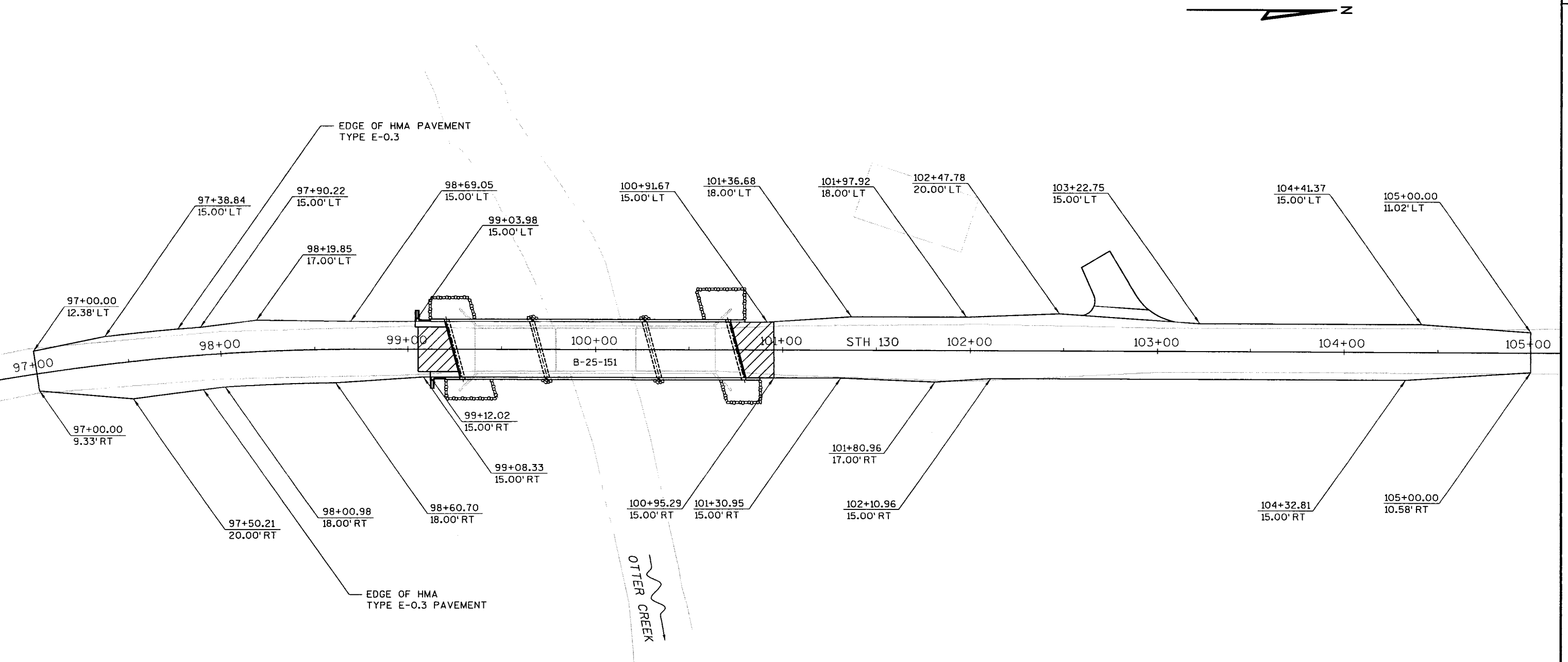
CONCRETE PAVEMENT APPROACH SLAB

STA. 99+05.51 - STA. 99+24.40 LT & RT  
STA. 100+75.60 - STA. 100+95.29 LT & RT











GENERAL NOTES

DETOUR ROUTE MARKER SIGNING TO BE INSTALLED BY CONTRACTOR.

THE EXACT LOCATION AND SPACING OF ALL SIGNS AND DEVICES SHALL BE ADJUSTED TO FIT FIELD CONDITIONS AS APPROVED BY THE ENGINEER.

ALL SIGNS INAPPROPRIATE TO THE STATUS OF THE CONTROL ZONE, INCLUDING PRE-EXISTING SIGNING IN THE VICINITY, SHALL BE COVERED OR REMOVED AS SPECIFIED IN THE PLANS AND/OR AS DIRECTED BY THE ENGINEER.

"WO" SIGNS ARE THE SAME AS "W" SIGNS EXCEPT THE BACKGROUND IS ORANGE.

ALL "WO" AND "W" SIGNS SHALL BE 48"x48" UNLESS OTHERWISE NOTED AND SHALL HAVE FLUORESCENT ORANGE, PRIZMATIC, RETROREFLECTIVE SHEETING IN ACCORDANCE WITH STANDARD SPECIFICATION 643.2.9.2

ANY "STOP" SIGNS THAT ARE REMOVED FOR A CONSTRUCTION OPERATION SHALL BE IMMEDIATELY RE-ESTABLISHED.

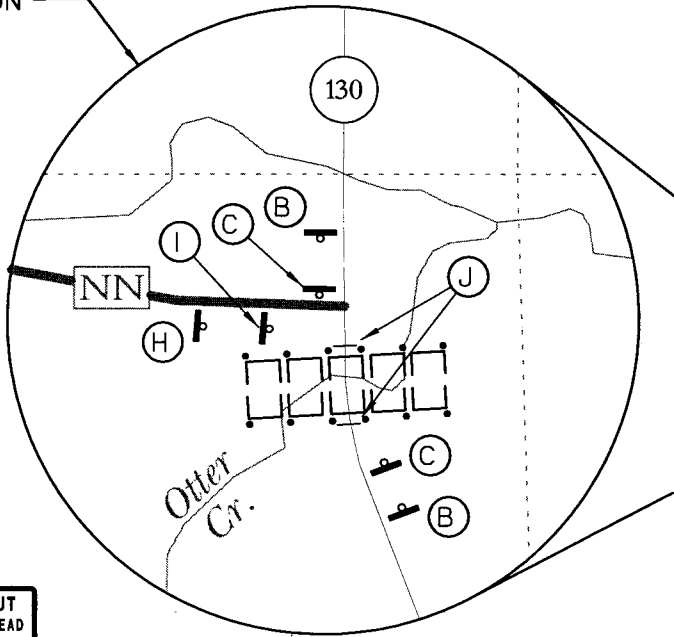
ALL M3 SERIES SIGNS (NORTH, EAST, SOUTH, WEST) WHICH ARE PART OF ANY DETOUR ROUTE MARKER SIGNING ASSEMBLY OR ATTACHED TO ANY WARNING SIGN SHALL BE BLACK LETTERING ON A WHITE BACKGROUND.

ALL M05 AND M06 ARROW SIGNS SHALL BE THE SAME AS "M" SIGNS EXCEPT THAT THE BACKGROUND IS ORANGE.

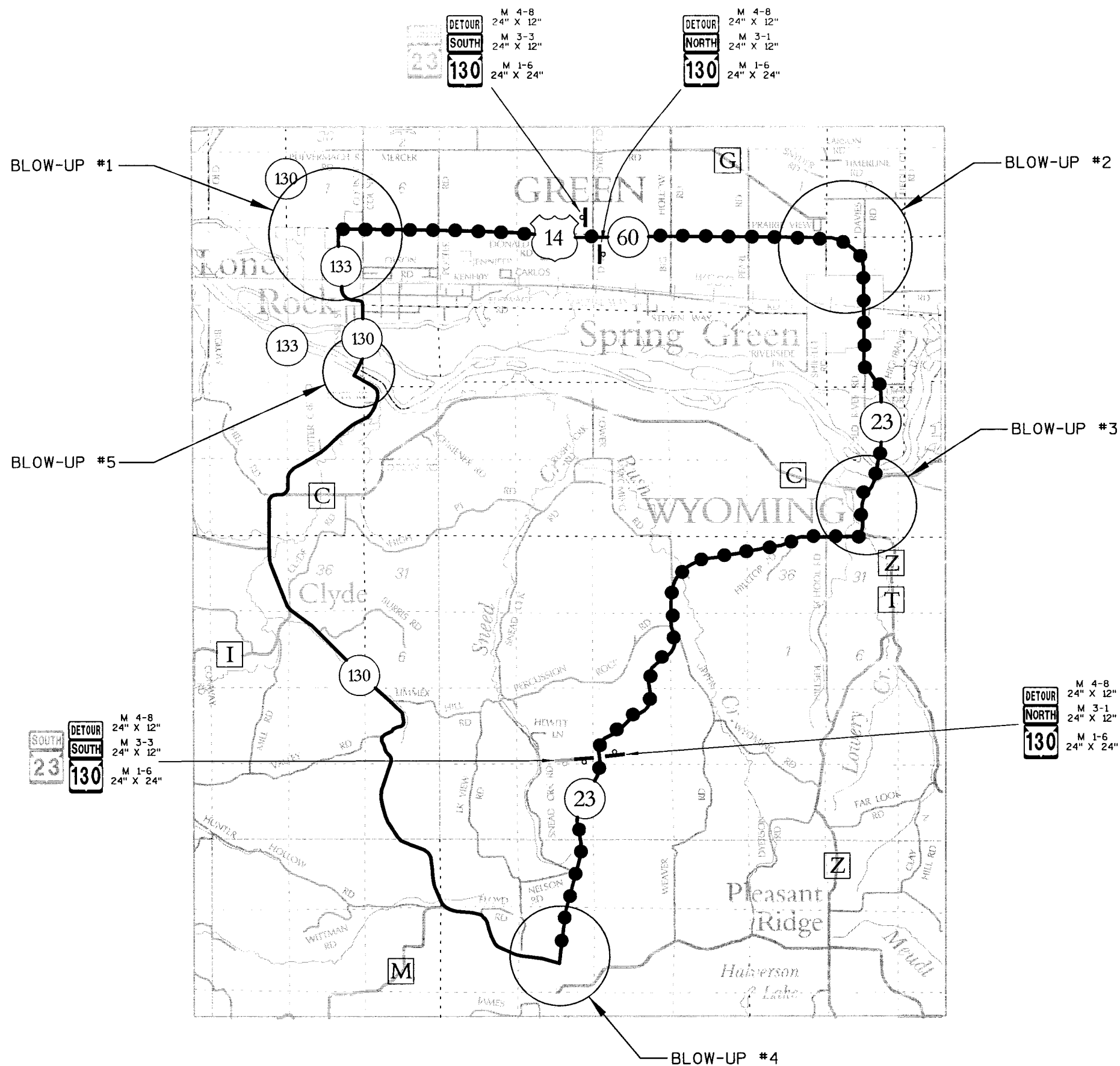
LEGEND

- ● ● DETOUR ROUTE
- I / I TYPE III BARRICADE WITH ATTACHED SIGN / WITHOUT SIGN (2 WARNING LIGHTS, TYPE A REQ'D)
- I TYPE II BARRICADE WITHOUT SIGN (1 WARNING LIGHT, TYPE A REQ'D)
- ⌋ WOOD POST WITH ATTACHED SIGN

SEE S.D.D. "BARRICADES AND SIGNS FOR MAINLINE CLOSURES" FOR ADDITIONAL INFORMATION







## GENERAL NOTES

DETOUR ROUTE MARKER SIGNING TO BE INSTALLED BY CONTRACTOR.

THE EXACT LOCATION AND SPACING OF ALL SIGNS AND DEVICES SHALL BE ADJUSTED TO FIT FIELD CONDITIONS AS APPROVED BY THE ENGINEER.

ALL SIGNS INAPPROPRIATE TO THE STATUS OF THE CONTROL ZONE, INCLUDING PRE-EXISTING SIGNING IN THE VICINITY, SHALL BE COVERED OR REMOVED AS SPECIFIED IN THE PLANS AND/OR AS DIRECTED BY THE ENGINEER.

"WO" SIGNS ARE THE SAME AS "W" SIGNS EXCEPT THE BACKGROUND IS ORANGE.






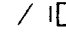

ALL "WO" AND "W" SIGNS SHALL BE 48"x48" UNLESS OTHERWISE NOTED AND SHALL HAVE FLUORESCENT ORANGE, PRIZMATIC, RETROREFLECTIVE SHEETING IN ACCORDANCE WITH STANDARD SPECIFICATION 643.2.9.2

ANY "STOP" SIGNS THAT ARE REMOVED FOR A CONSTRUCTION OPERATION SHALL BE IMMEDIATELY RE-ESTABLISHED.

ALL M3 SERIES SIGNS (NORTH, EAST, SOUTH, WEST) WHICH ARE PART OF ANY DETOUR ROUTE MARKER SIGNING ASSEMBLY OR ATTACHED TO ANY WARNING SIGN SHALL BE BLACK LETTERING ON A WHITE BACKGROUND.

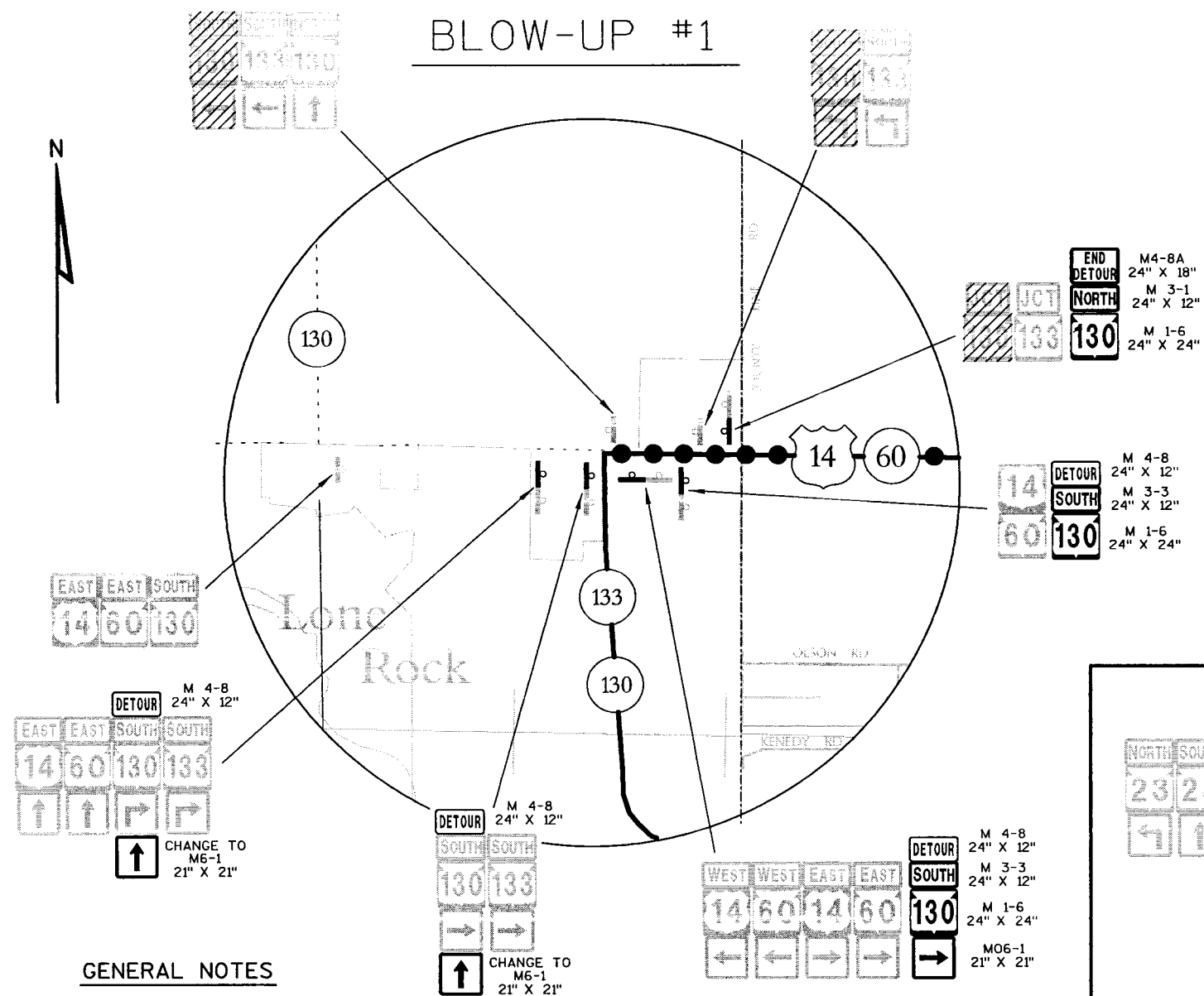
ALL M05 AND M06 ARROW SIGNS SHALL BE THE SAME AS "M" SIGNS EXCEPT THAT THE BACKGROUND IS ORANGE.

## LEGEND

-  NEW SIGN
-  EXISTING SIGN
-  EXISTING SIGN TO BE COVERED
-  DETOUR ROUTE
-  POST MOUNTED SIGN (NEW)
-  POST/POLE MOUNTED SIGN (EXISTING)
-  TYPE III BARRICADE WITH / WITHOUT SIGN



## BLOW-UP #1



## GENERAL NOTES

DETOUR ROUTE MARKER SIGNING TO BE INSTALLED BY CONTRACTOR.

THE EXACT LOCATION AND SPACING OF ALL SIGNS AND DEVICES SHALL BE ADJUSTED TO FIT FIELD CONDITIONS AS APPROVED BY THE ENGINEER.

ALL SIGNS INAPPROPRIATE TO THE STATUS OF THE CONTROL ZONE, INCLUDING PRE-EXISTING SIGNING IN THE VICINITY, SHALL BE COVERED OR REMOVED AS SPECIFIED IN THE PLANS AND/OR AS DIRECTED BY THE ENGINEER.

"WO" SIGNS ARE THE SAME AS "W" SIGNS EXCEPT THE BACKGROUND IS ORANGE.

ALL "WO" AND "W" SIGNS SHALL BE 48"x48" UNLESS OTHERWISE NOTED AND SHALL HAVE FLUORESCENT ORANGE, PRISMATIC, RETROREFLECTIVE SHEETING IN ACCORDANCE WITH STANDARD SPECIFICATION 643.2.9.2.

ANY "STOP" SIGNS THAT ARE REMOVED FOR A CONSTRUCTION OPERATION SHALL BE IMMEDIATELY RE-ESTABLISHED.

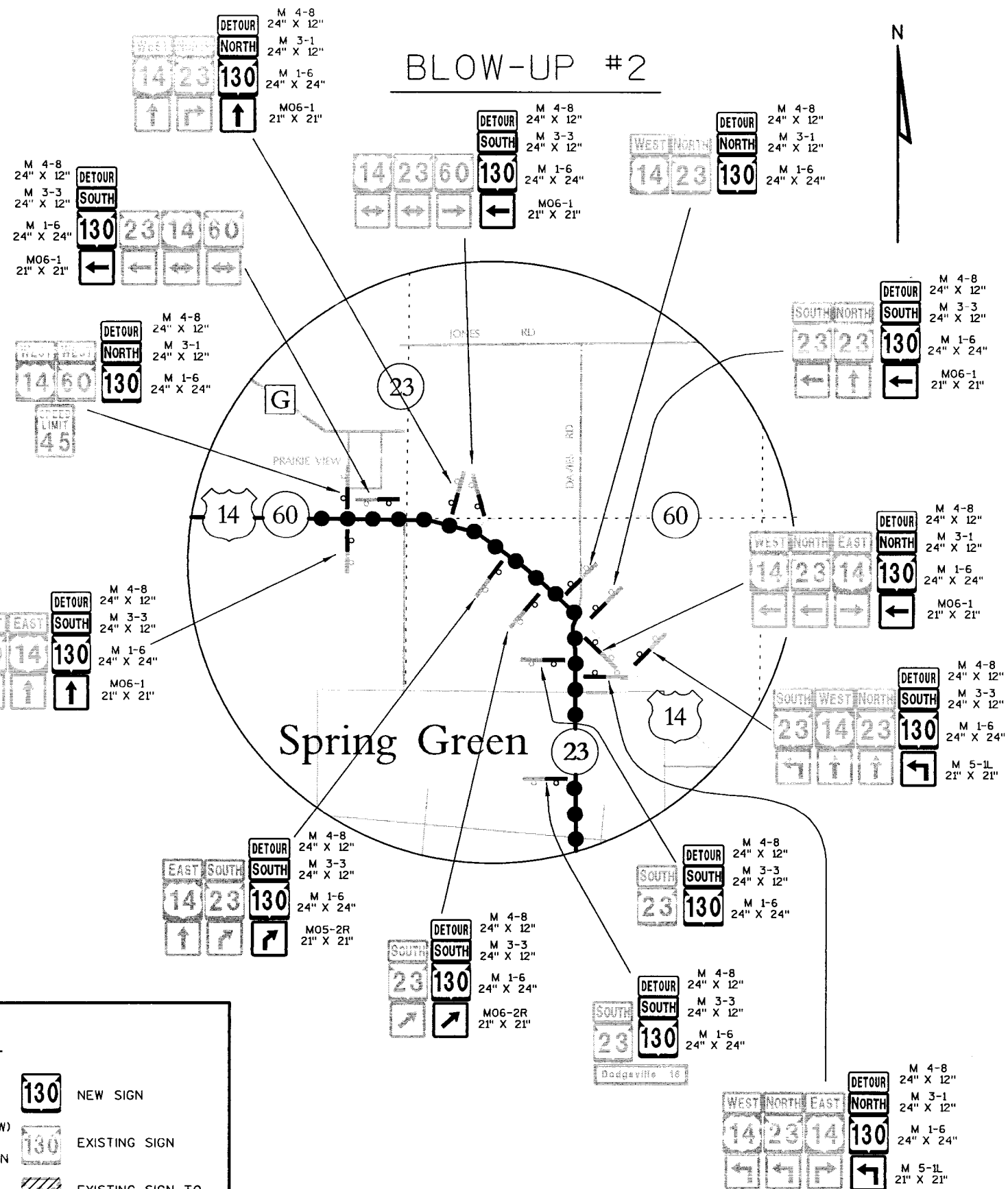
ALL M3 SERIES SIGNS (NORTH, EAST, SOUTH, WEST) WHICH ARE PART OF ANY DETOUR ROUTE MARKER SIGNING ASSEMBLY OR ATTACHED TO ANY WARNING SIGN SHALL BE BLACK LETTERING ON A WHITE BACKGROUND.

ALL M05 AND M06 ARROW SIGNS SHALL BE THE SAME AS "M" SIGNS EXCEPT THAT THE BACKGROUND IS ORANGE.

## LEGEND

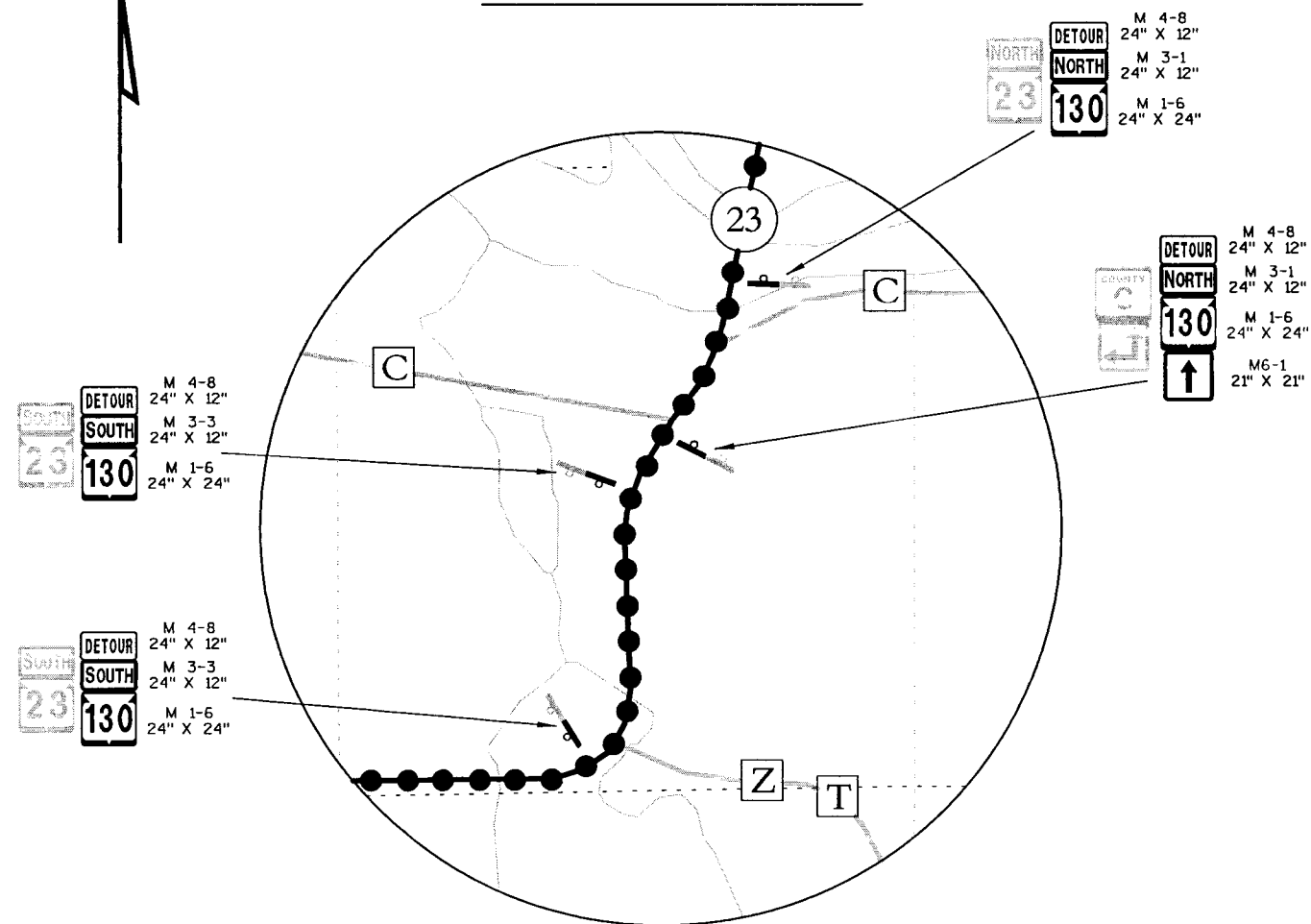
- ● ● DETOUR ROUTE
- POST MOUNTED SIGN (NEW)
- POST/POLE MOUNTED SIGN (EXISTING)
- TYPE III BARRICADE WITH / WITHOUT SIGN
- NEW SIGN
- EXISTING SIGN
- EXISTING SIGN TO BE COVERED

## BLOW-UP #2





## BLOW-UP #3



## GENERAL NOTES

DETOUR ROUTE MARKER SIGNING TO BE INSTALLED BY CONTRACTOR.

THE EXACT LOCATION AND SPACING OF ALL SIGNS AND DEVICES SHALL BE ADJUSTED TO FIT FIELD CONDITIONS AS APPROVED BY THE ENGINEER.

ALL SIGNS INAPPROPRIATE TO THE STATUS OF THE CONTROL ZONE, INCLUDING PRE-EXISTING SIGNING IN THE VICINITY, SHALL BE COVERED OR REMOVED AS SPECIFIED IN THE PLANS AND/OR AS DIRECTED BY THE ENGINEER.

"WO" SIGNS ARE THE SAME AS "W" SIGNS EXCEPT THE BACKGROUND IS ORANGE.

ALL "WO" AND "W" SIGNS SHALL BE 48"x48" UNLESS OTHERWISE NOTED AND SHALL HAVE FLUORESCENT ORANGE, PRIZMATIC, RETROREFLECTIVE SHEETING IN ACCORDANCE WITH STANDARD SPECIFICATION 643.2.9.2

ANY "STOP" SIGNS THAT ARE REMOVED FOR A CONSTRUCTION OPERATION SHALL BE IMMEDIATELY RE-ESTABLISHED.

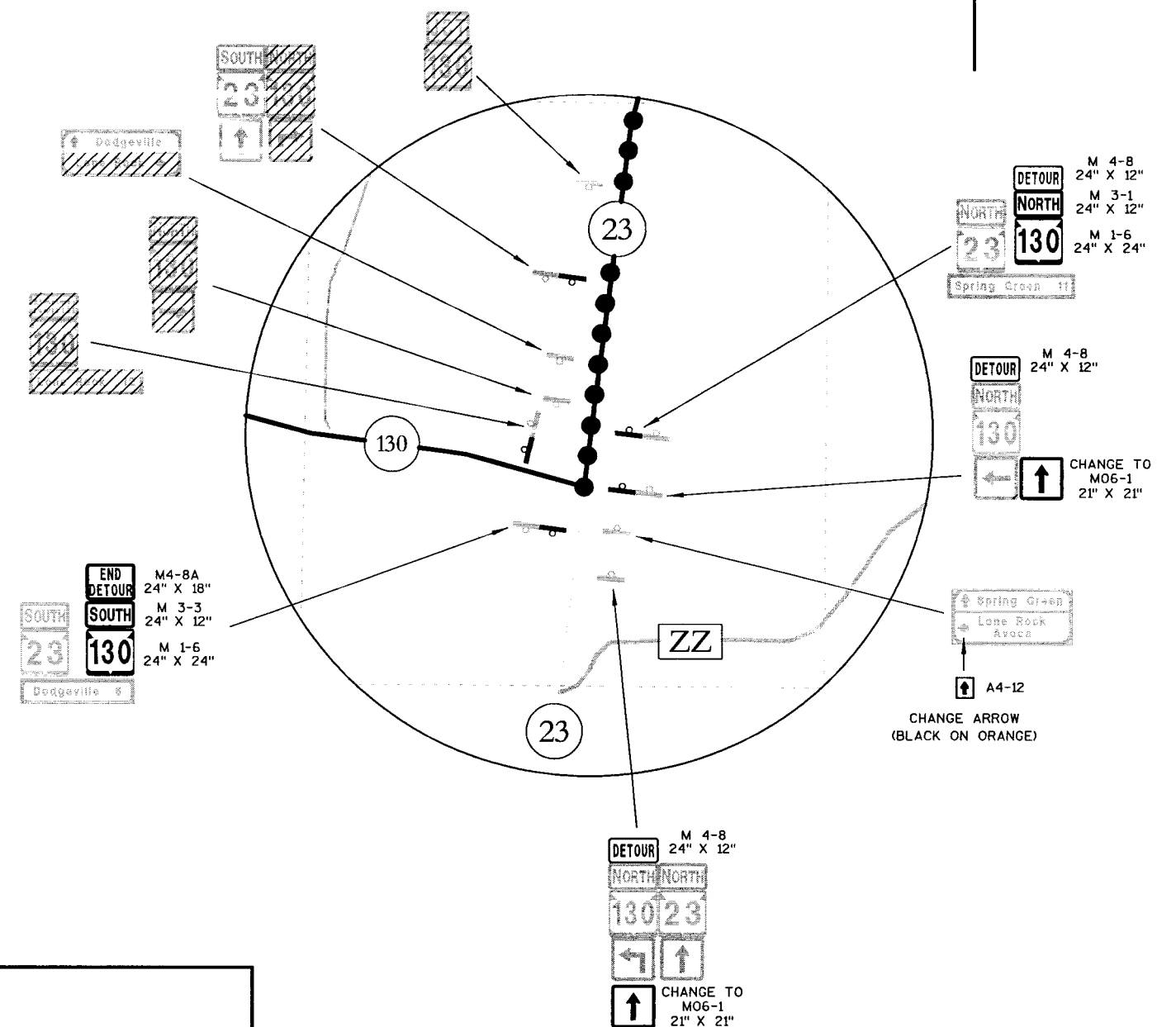
ALL M3 SERIES SIGNS (NORTH, EAST, SOUTH, WEST) WHICH ARE PART OF ANY DETOUR ROUTE MARKER SIGNING ASSEMBLY OR ATTACHED TO ANY WARNING SIGN SHALL BE BLACK LETTERING ON A WHITE BACKGROUND.

ALL M05 AND M06 ARROW SIGNS SHALL BE THE SAME AS "M" SIGNS EXCEPT THAT THE BACKGROUND IS ORANGE.

## LEGEND

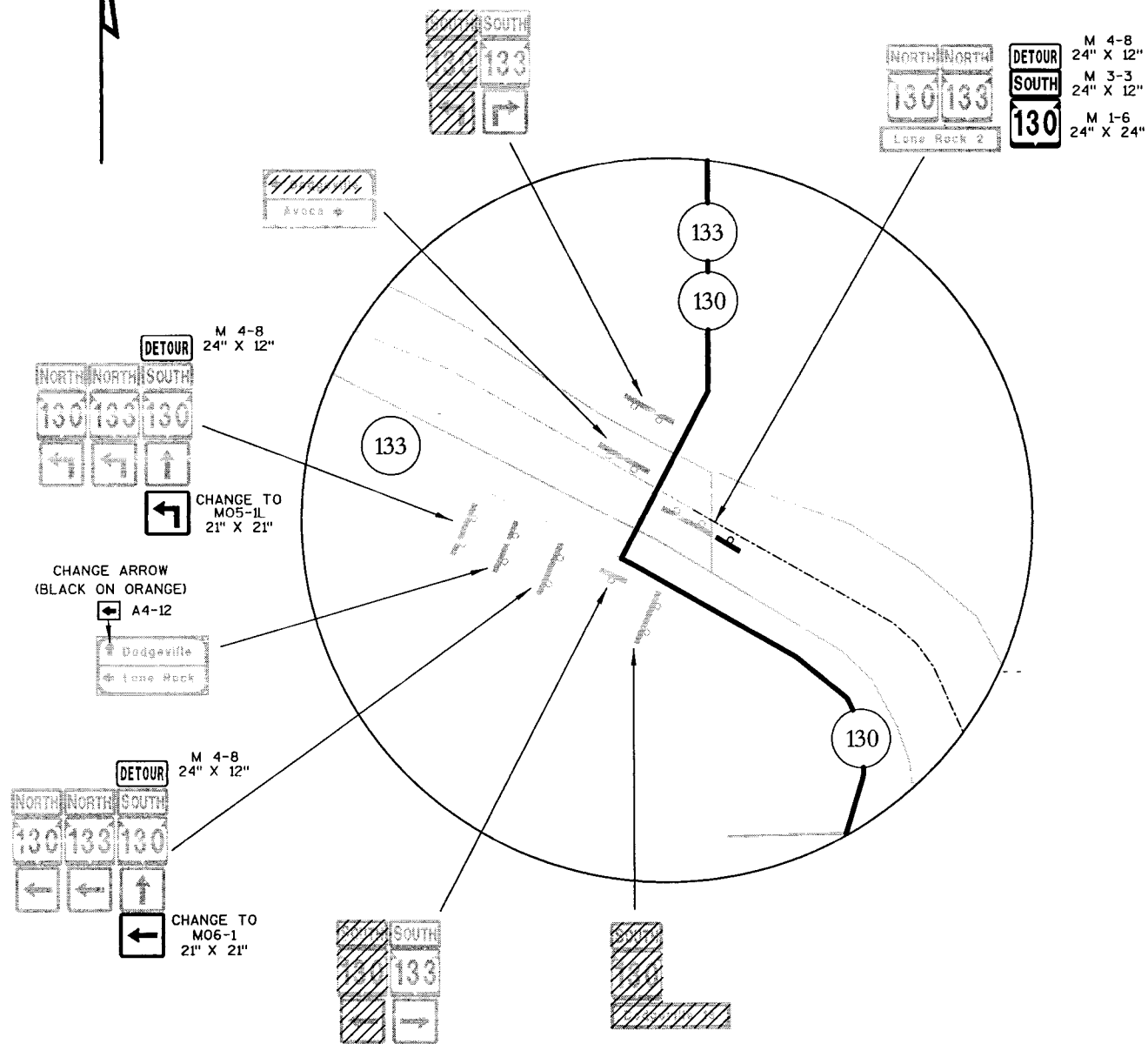
- ● ● DETOUR ROUTE
- POST MOUNTED SIGN (NEW)
- POST/POLE MOUNTED SIGN (EXISTING)
- TYPE III BARRICADE WITH / WITHOUT SIGN
- NEW SIGN
- EXISTING SIGN
- EXISTING SIGN TO BE COVERED

## BLOW-UP #4





## BLOW-UP #5



## GENERAL NOTES

DETOUR ROUTE MARKER SIGNING TO BE INSTALLED BY CONTRACTOR.

THE EXACT LOCATION AND SPACING OF ALL SIGNS AND DEVICES SHALL BE ADJUSTED TO FIT FIELD CONDITIONS AS APPROVED BY THE ENGINEER.

ALL SIGNS INAPPROPRIATE TO THE STATUS OF THE CONTROL ZONE, INCLUDING PRE-EXISTING SIGNING IN THE VICINITY, SHALL BE COVERED OR REMOVED AS SPECIFIED IN THE PLANS AND/OR AS DIRECTED BY THE ENGINEER.

"WO" SIGNS ARE THE SAME AS "W" SIGNS EXCEPT THE BACKGROUND IS ORANGE.

ALL "WO" AND "W" SIGNS SHALL BE 48"x48" UNLESS OTHERWISE NOTED AND SHALL HAVE FLUORESCENT ORANGE, PRISMATIC, RETROREFLECTIVE SHEETING IN ACCORDANCE WITH STANDARD SPECIFICATION 643.2.9.2

ANY "STOP" SIGNS THAT ARE REMOVED FOR A CONSTRUCTION OPERATION SHALL BE IMMEDIATELY RE-ESTABLISHED.

ALL M3 SERIES SIGNS (NORTH, EAST, SOUTH, WEST) WHICH ARE PART OF ANY DETOUR ROUTE MARKER SIGNING ASSEMBLY OR ATTACHED TO ANY WARNING SIGN SHALL BE BLACK LETTERING ON A WHITE BACKGROUND.

ALL M05 AND M06 ARROW SIGNS SHALL BE THE SAME AS "M" SIGNS EXCEPT THAT THE BACKGROUND IS ORANGE.

## LEGEND

- |       |  |  |                             |
|-------|--|--|-----------------------------|
| ● ● ● | DETOUR ROUTE                           |  | NEW SIGN                    |
|       | POST MOUNTED SIGN (NEW)                |  | EXISTING SIGN               |
|       | POST/POLE MOUNTED SIGN (EXISTING)      |  | EXISTING SIGN TO BE COVERED |
|       | TYPE III BARRICADE WITH / WITHOUT SIGN |  |                             |