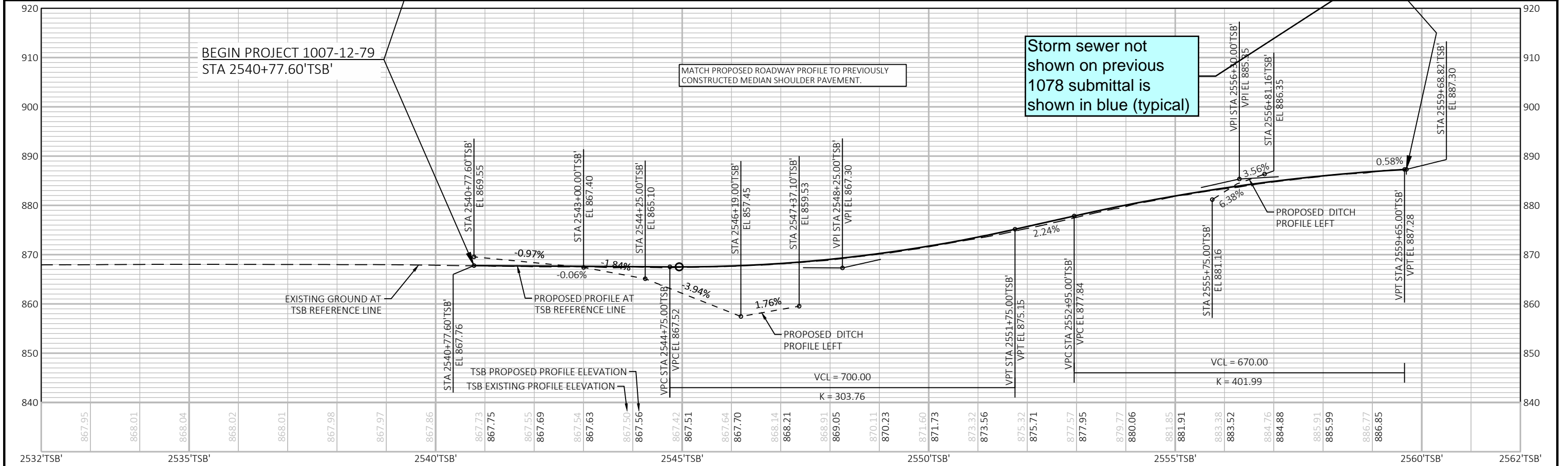


BENCHMARKS				
NO.	STATION	ELEV.	OFFSET	DESCRIPTION
754B	2549+42.18	874.38	431.8' RT	CHISELED SQUARE ON EAST SIGN BASE

5

5



PROJECT NO: 1007-12-79	HWY: IH 39	COUNTY: DANE	PLAN AND PROFILE: IH 39 TSB	SHEET	E
------------------------	------------	--------------	-----------------------------	-------	----------

#21 WisDOT Communications
All new ITS facilities will be included with the 1007-12-79 construction project ID

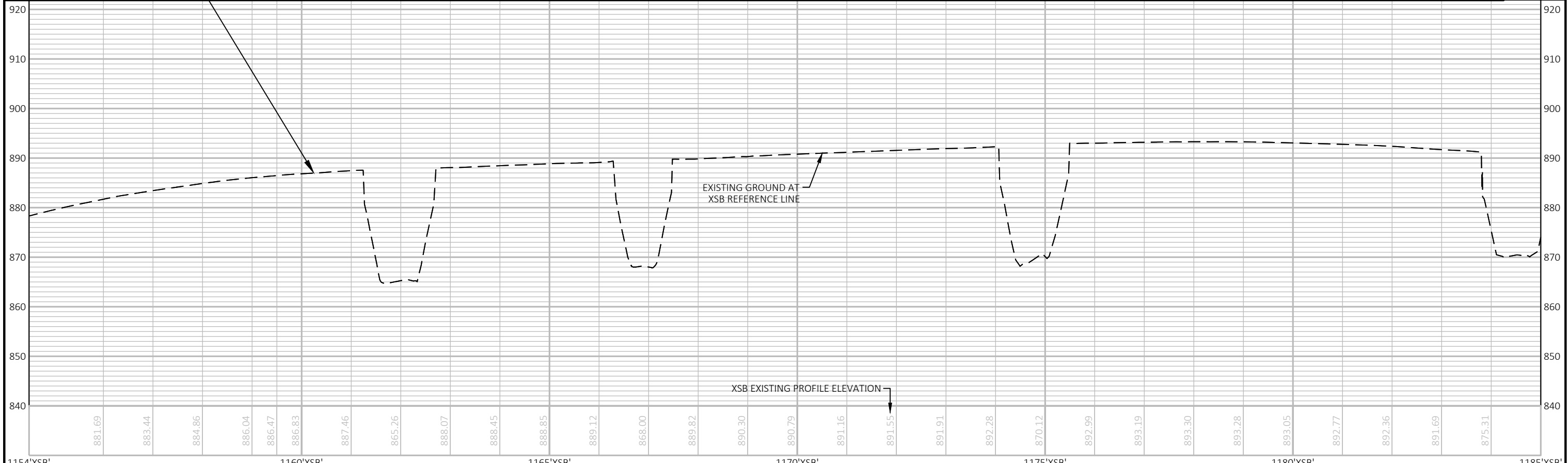
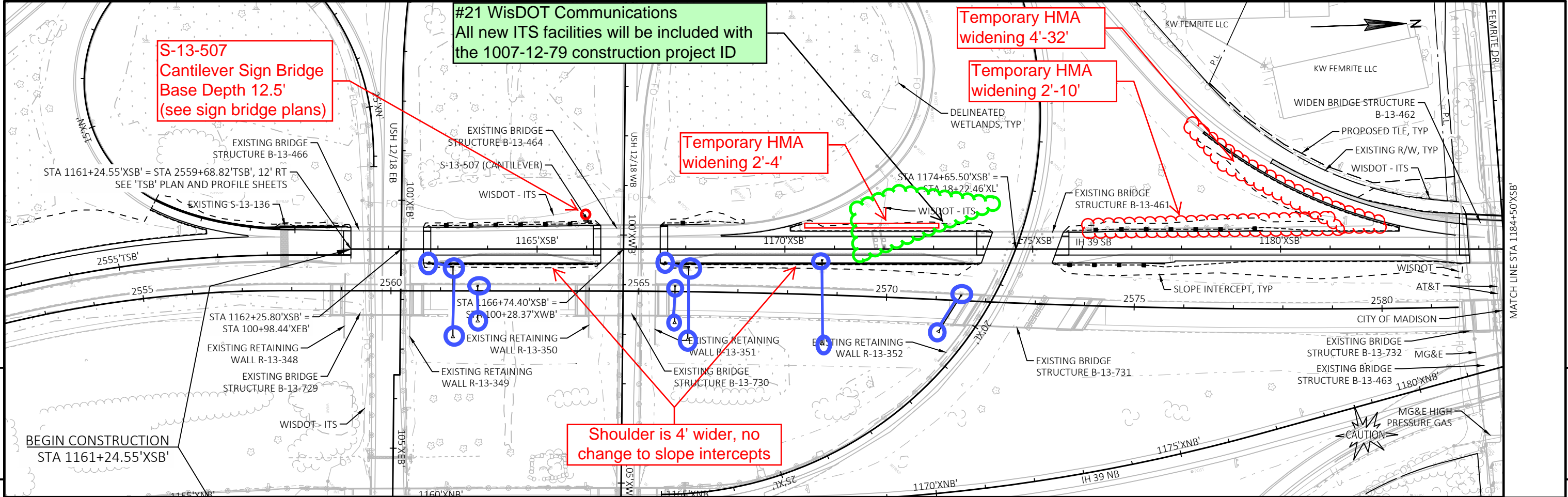
S-13-507
Cantilever Sign Bridge
Base Depth 12.5'
(see sign bridge plans)

Temporary HMA
widening 4'-32'

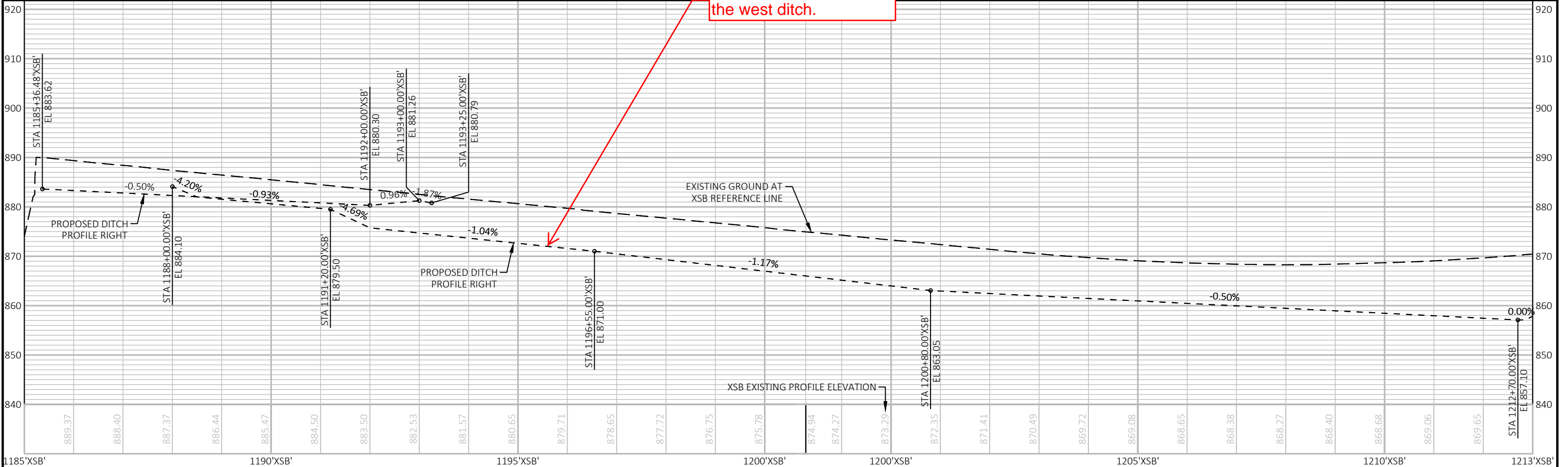
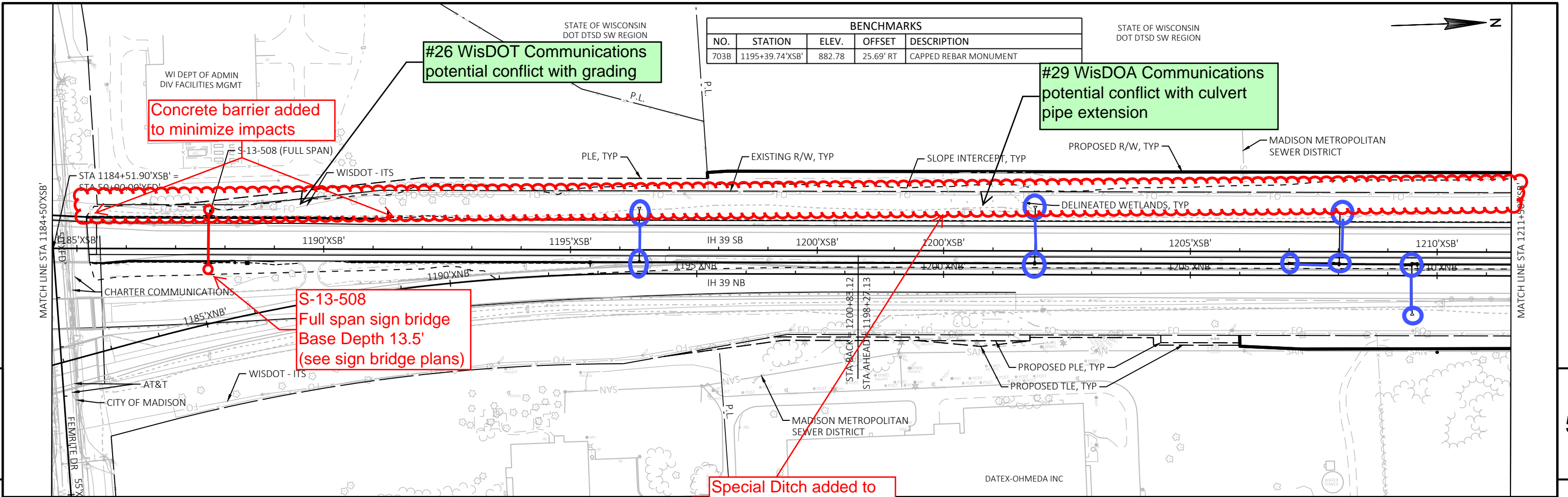
Temporary HMA
widening 2'-10'

Temporary HMA
widening 2'-4'

Shoulder is 4' wider, no
change to slope intercepts



PROJECT NO: 1007-12-79	HWY: IH 39	COUNTY: DANE	PLAN AND PROFILE: IH 39 XSB	SHEET	E
------------------------	------------	--------------	-----------------------------	-------	---



PROJECT NO: 1007-12-79	HWY: IH 39	COUNTY: DANE	PLAN AND PROFILE: IH 39 XSB	SHEET	E
------------------------	------------	--------------	-----------------------------	-------	---

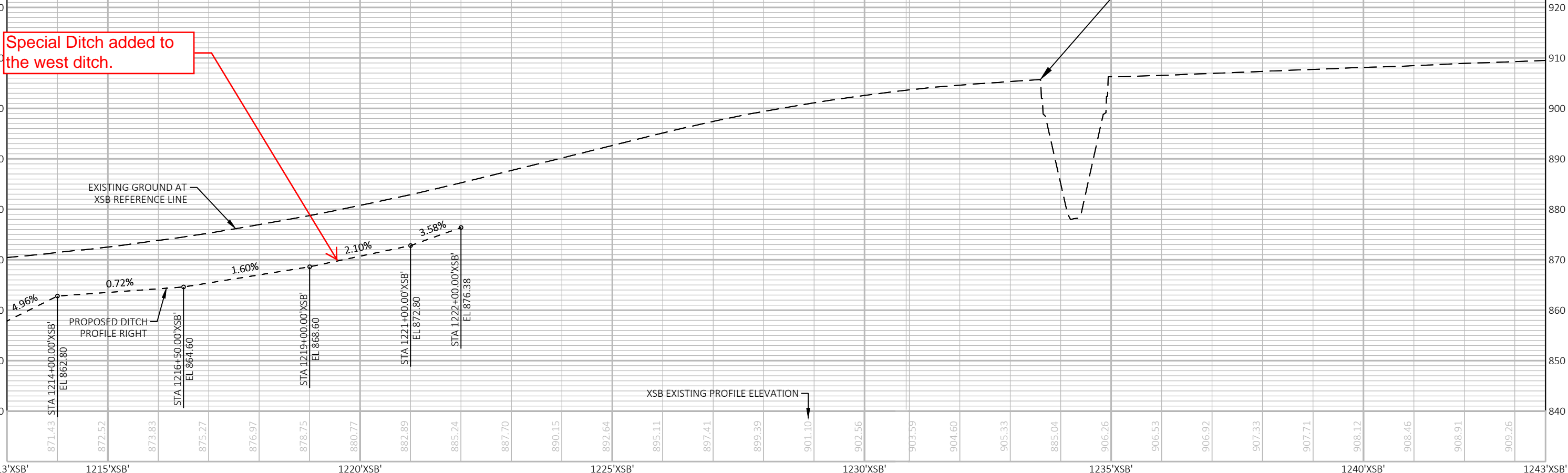
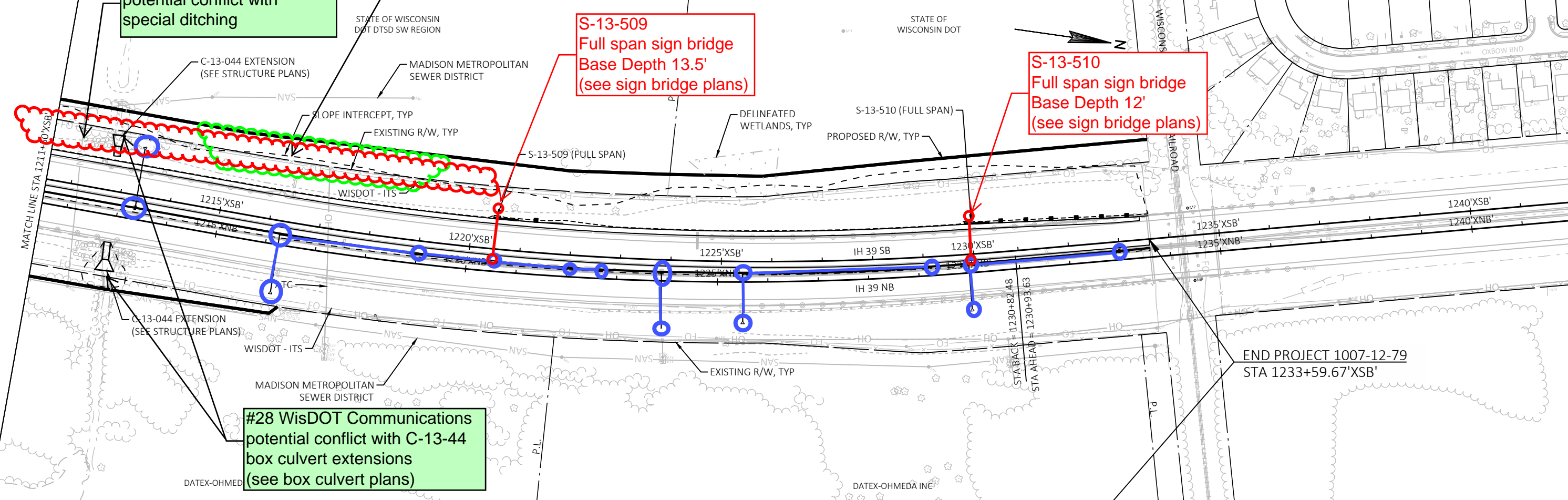
#30 MMSD Sanitary Sewer potential conflict with special ditching

#26 WisDOT Communications potential conflict with grading

S-13-509 Full span sign bridge Base Depth 13.5' (see sign bridge plans)

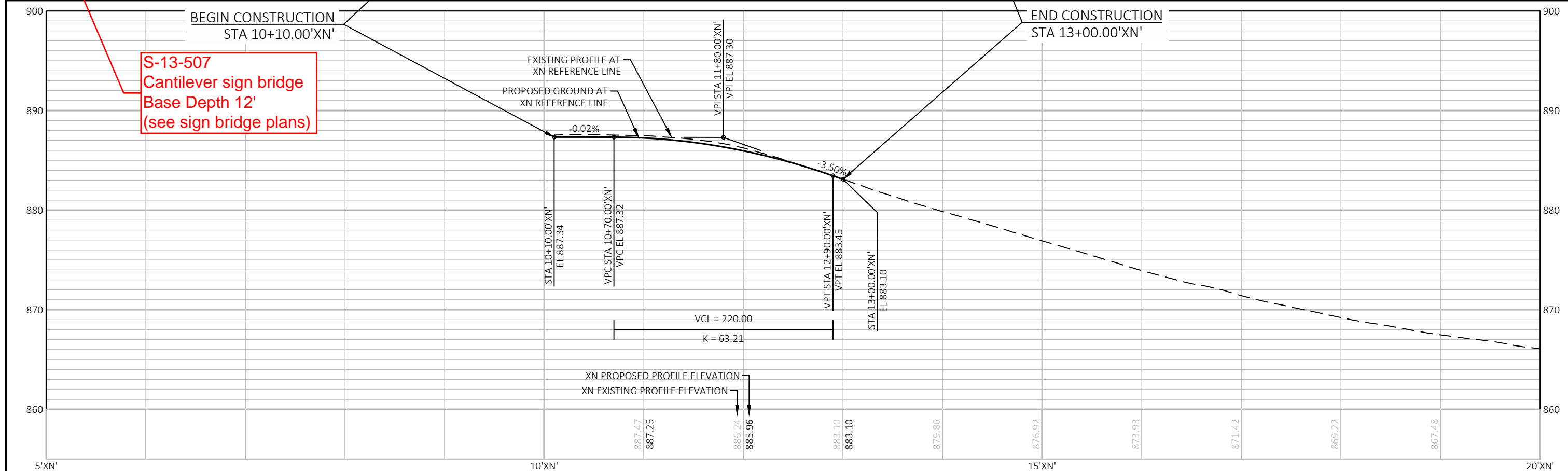
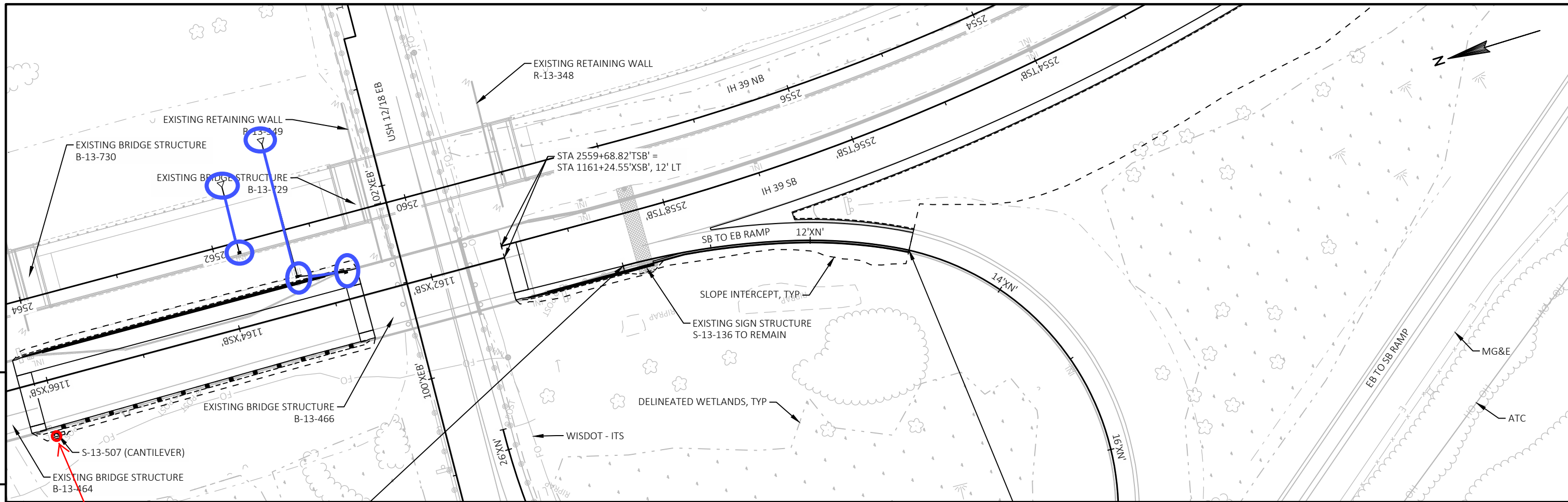
S-13-510 Full span sign bridge Base Depth 12' (see sign bridge plans)

#28 WisDOT Communications potential conflict with C-13-44 box culvert extensions (see box culvert plans)



1213'XSB' 1215'XSB' 1220'XSB' 1225'XSB' 1230'XSB' 1235'XSB' 1240'XSB' 1243'XSB'

PROJECT NO: 1007-12-79 HWY: IH 39 COUNTY: DANE PLAN AND PROFILE: IH 39 XSB SHEET E



PROJECT NO: 1007-12-79	HWY: IH 39	COUNTY: DANE	PLAN AND PROFILE: SB TO EB RAMP (BDE)	SHEET	E
------------------------	------------	--------------	---------------------------------------	-------	----------