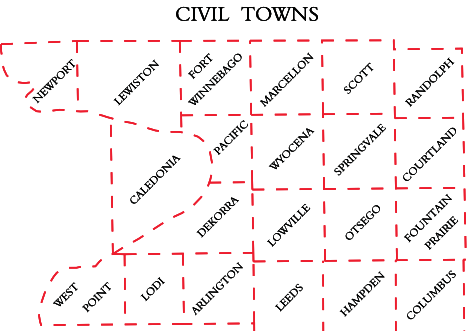
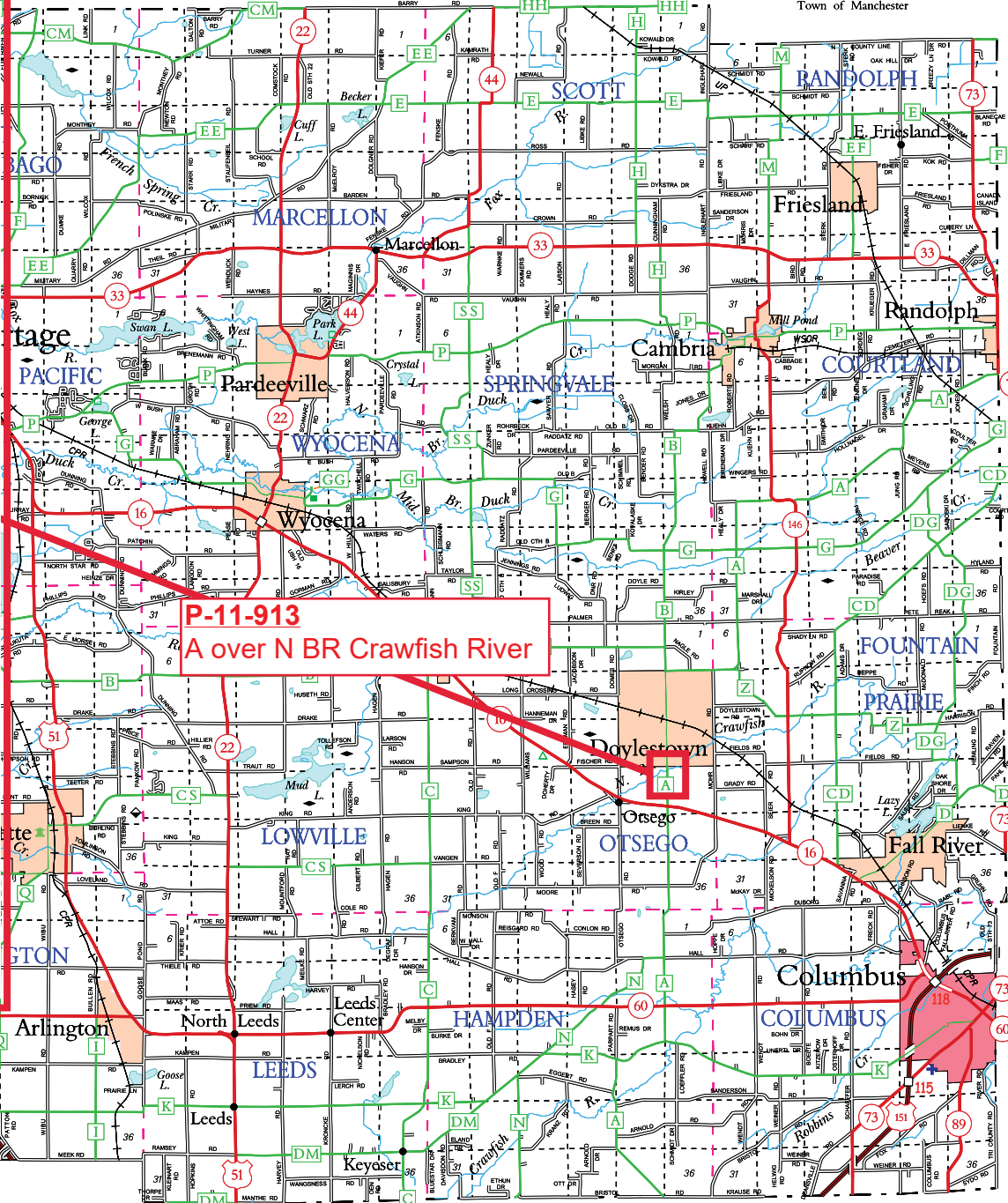
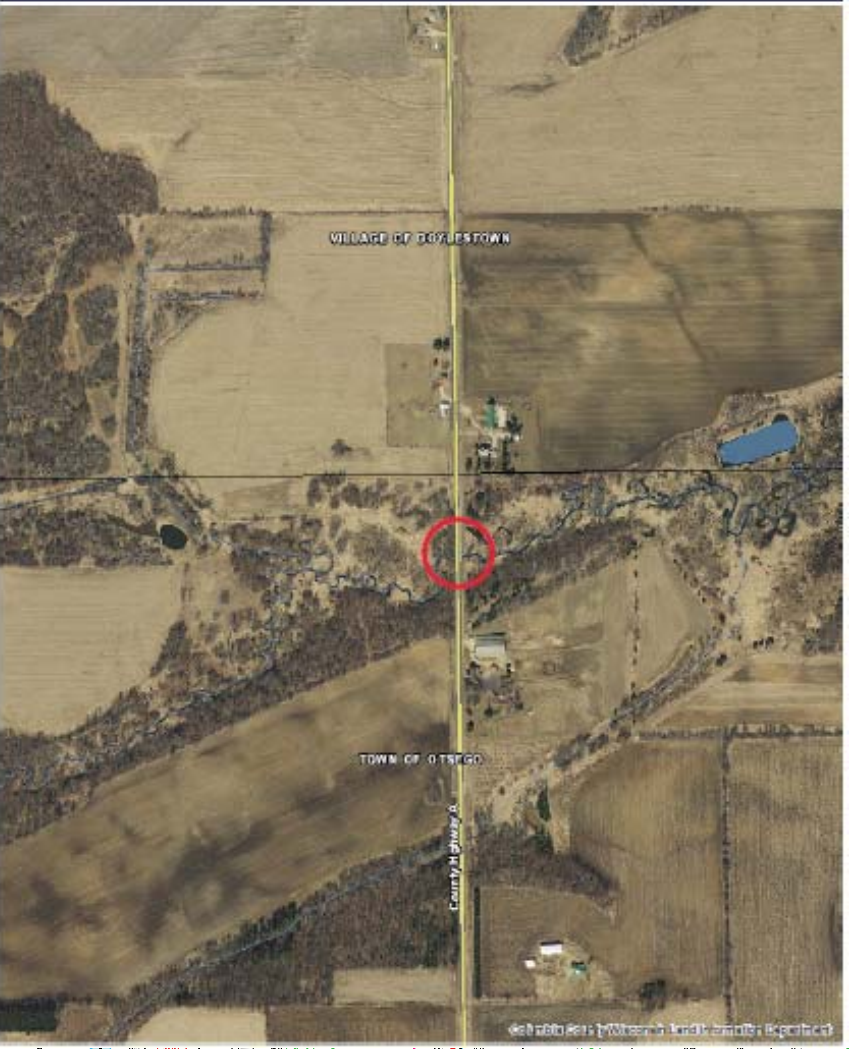


LEGEND

- Freeway
- Multilane Divided
- U.S. or State Hwy
- County Trunk Hwy
- Town Road
- Firelane
- Railroad
- State Trail
- Interchange
- Highway Separation
- Interstate Highway No.
- U.S. Highway No.
- State Highway No.
- County Highway Letter
- State Boundary
- County Boundary
- Civil Town Boundary
- Section Line
- Dam
- Hospital
- Airport
- County Seat
- Unincorporated Village
- Fish Hatchery
- Game Farm
- Public Hunt or Fish Grds.
- Public Camp & Picnic Grds.
- Ranger Station
- State Park
- County Park
- Without Facilities
- Rest Area
- Modern Facilities
- Wayside
- Rustic Facilities
- Columbia Correctional Institution

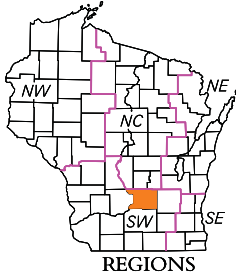
COLUMBIA COUNTY INTERACTIVE MAP



SECTION NUMBERING OF A TOWNSHIP

6	5	4	3	2	1
7	8	9	10	11	12
18	17	16	15	14	13
19	20	21	22	23	24
30	29	28	27	26	25
31	32	33	34	35	36

For boundaries of public hunting and fishing grounds please contact the Department of Natural Resources



MILES OF HIGHWAY as of Dec. 31, 2016

STATE	278
COUNTY	357
LOCAL ROADS	104
OTHER ROADS	1
TOTAL FOR COUNTY	1740

Land Area (2010 Census) 765 sq mi
Population (2010 Census) 56833
County Seat Portage

COLUMBIA CO.

DEPARTMENT OF TRANSPORTATION
STATE OFFICE BUILDING
Madison, Wisconsin
SCALE 0 1 2 MILES
Corrected for
JAN. 2018
Base compiled from U.S.G.S. Quadrangles
1:100,000 Series