

DESIGN DATA

LIVE LOAD:

DESIGN LOADING _____ HS-20
INVENTORY RATING FACTOR _____ HS-24
OPERATING RATING FACTOR _____ HS-51
WISCONSIN STANDARD PERMIT VEHICLE (WIS-SPV) _____ 250 KIPS

MATERIAL PROPERTIES:

CONCRETE MASONRY, SUPERSTRUCTURE _____ $f'_c = 4,000$ P.S.I.
ALL OTHER _____ $f'_c = 3,500$ P.S.I.
HIGH-STRENGTH BAR STEEL _____ $f_y = 60,000$ P.S.I.
REINFORCEMENT, GRADE 60 _____
45-INCH PRESTRESSED GIRDER _____ $f'_c = 8,000$ P.S.I.
CONCRETE MASONRY _____
STRANDS 0.5 INCH DIA. _____ $f_y = 270,000$ P.S.I.
ULTIMATE TENSILE STRENGTH _____

TRAFFIC DATA

A.D.T. (2022) _____ 3,600
A.D.T. (2042) _____ 4,200
DESIGN SPEED _____ 55 M.P.H.

LIST OF DRAWINGS

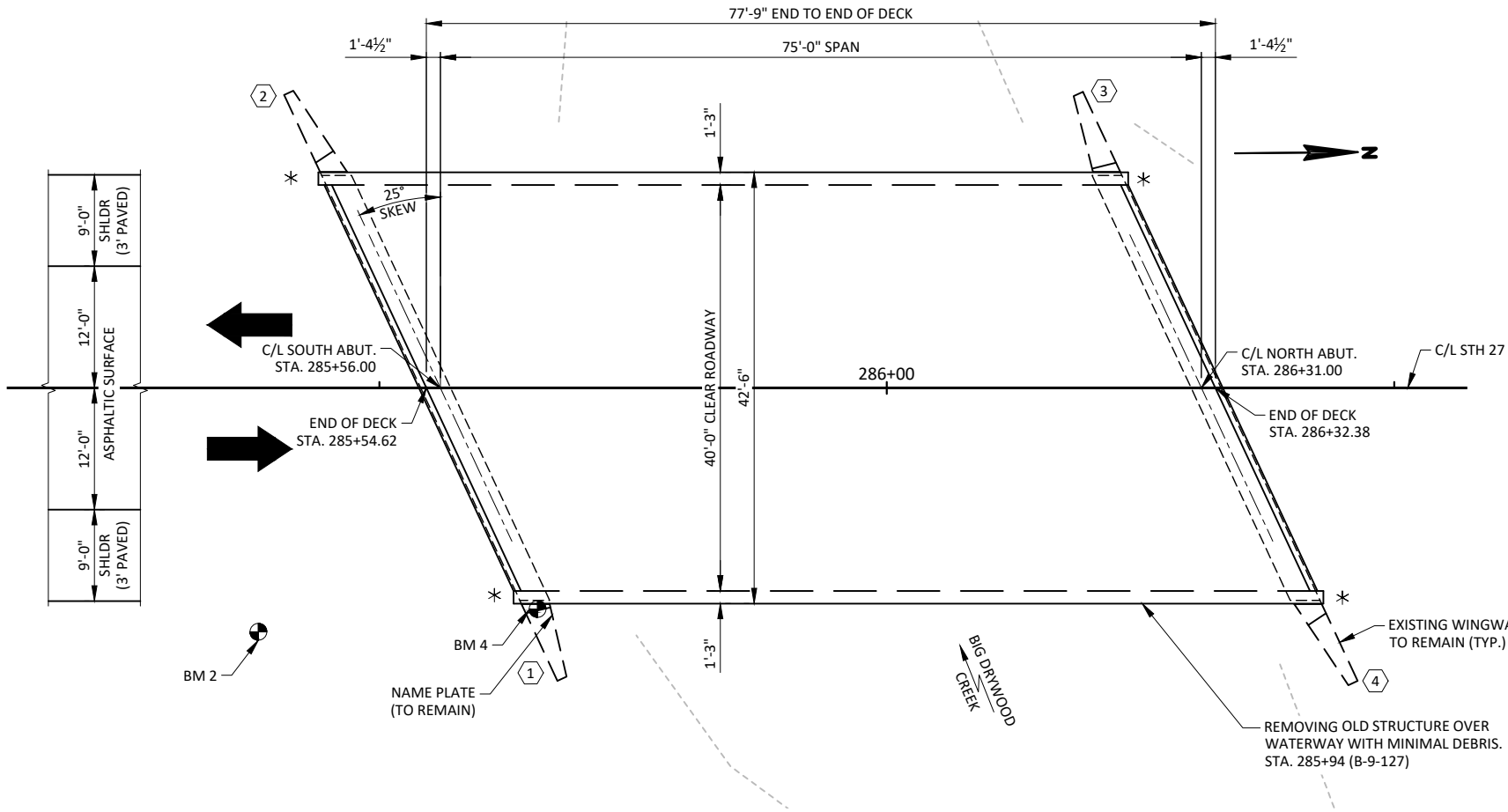
GENERAL PLAN _____ 1.
QUANTITIES AND NOTES _____ 2.

BENCH MARKS

NO.	STA.	DESCRIPTION	ELEV.
5	283+34	STAR SPIKE IN POWER POLE, 46' RT.	1001.21
2	285+38	3/4" IRON ROD SET, 24' RT.	1005.79
4	285+65	TABLET IN SE WINGWALL, 21' RT.	1006.72
6	286+97	STAR SPIKE IN POWER POLE, 47' RT.	1002.93

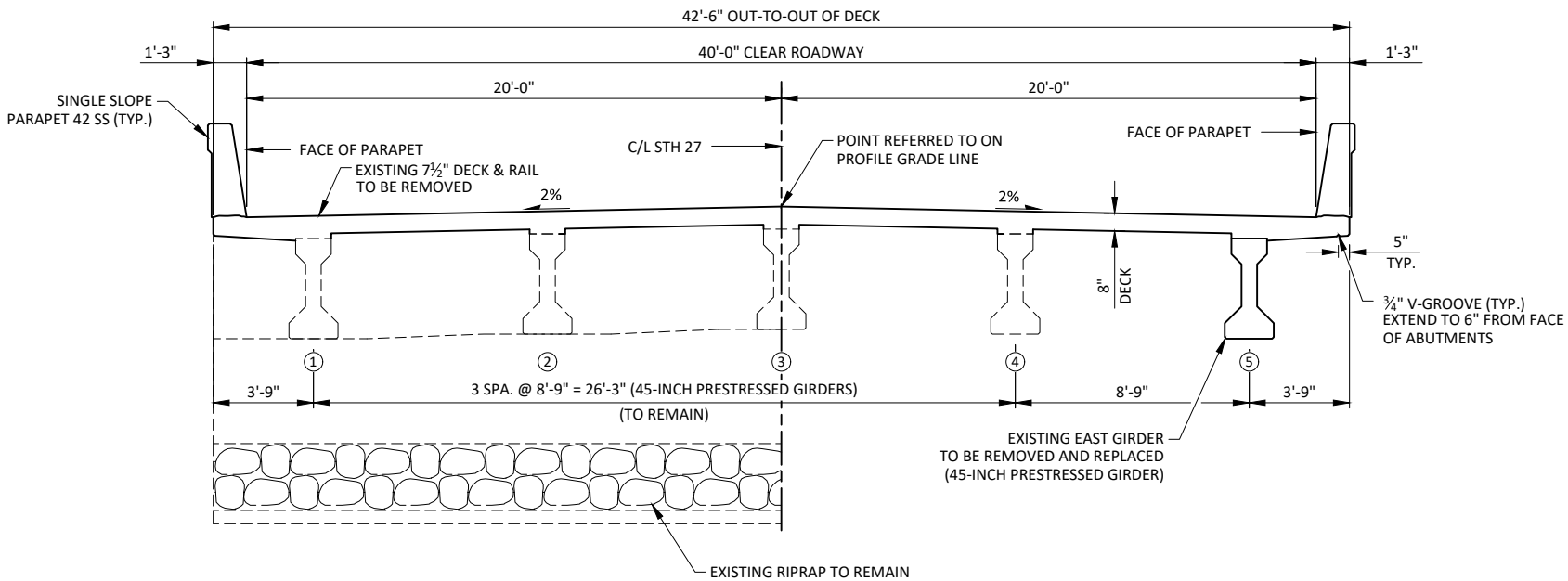
* ANCHOR ASSEMBLIES FOR
STEEL PLATE BEAM GUARD

INDICATES WING NUMBER



PLAN B-09-127

(SINGLE-SPAN 45" PRESTRESSED CONCRETE GIRDER STRUCTURE)
(REDECK AND EAST GIRDER REPLACEMENT)



PROPOSED CROSS-SECTION THROUGH ROADWAY

LOOKING NORTH

DESIGN CONSULTANT

ROBERT HANOLD, PE
(608) 588-7484

BRIDGE OFFICE CONTACT

WILLIAM DREHER, PE
(608) 266-8489

GENERAL PLAN

SHEET 1 OF 2

