

DESIGN DATA

LIVE LOAD:

DESIGN RATING: HL-93
INVENTORY RATING FACTOR: 1.0X
OPERATING RATING FACTOR: 1.0X
WISCONSIN STANDARD PERMIT VEHICLE (WIS-SPV): XXX KIPS

MATERIAL PROPERTIES:

CONCRETE MASONRY - DECK PATCHING.....f'c = 4,000 psi

LEGEND

- ➔ DIRECTION OF TRAFFIC
- ☆ DIMENSIONS TAKEN FROM ORIGINAL STRUCTURE PLANS
- DIMENSIONS TAKEN FROM EXISTING SURVEY
- DIMENSION AND LOCATION TAKEN FROM THE INSPECTION REPORT DATED OCTOBER 25, 2018

LIST OF DRAWINGS

1. GENERAL PLAN & ELEVATION
2. TYPICAL SECTION, GENERAL NOTES & QUANTITIES

TRAFFIC DATA

IH 43 SB

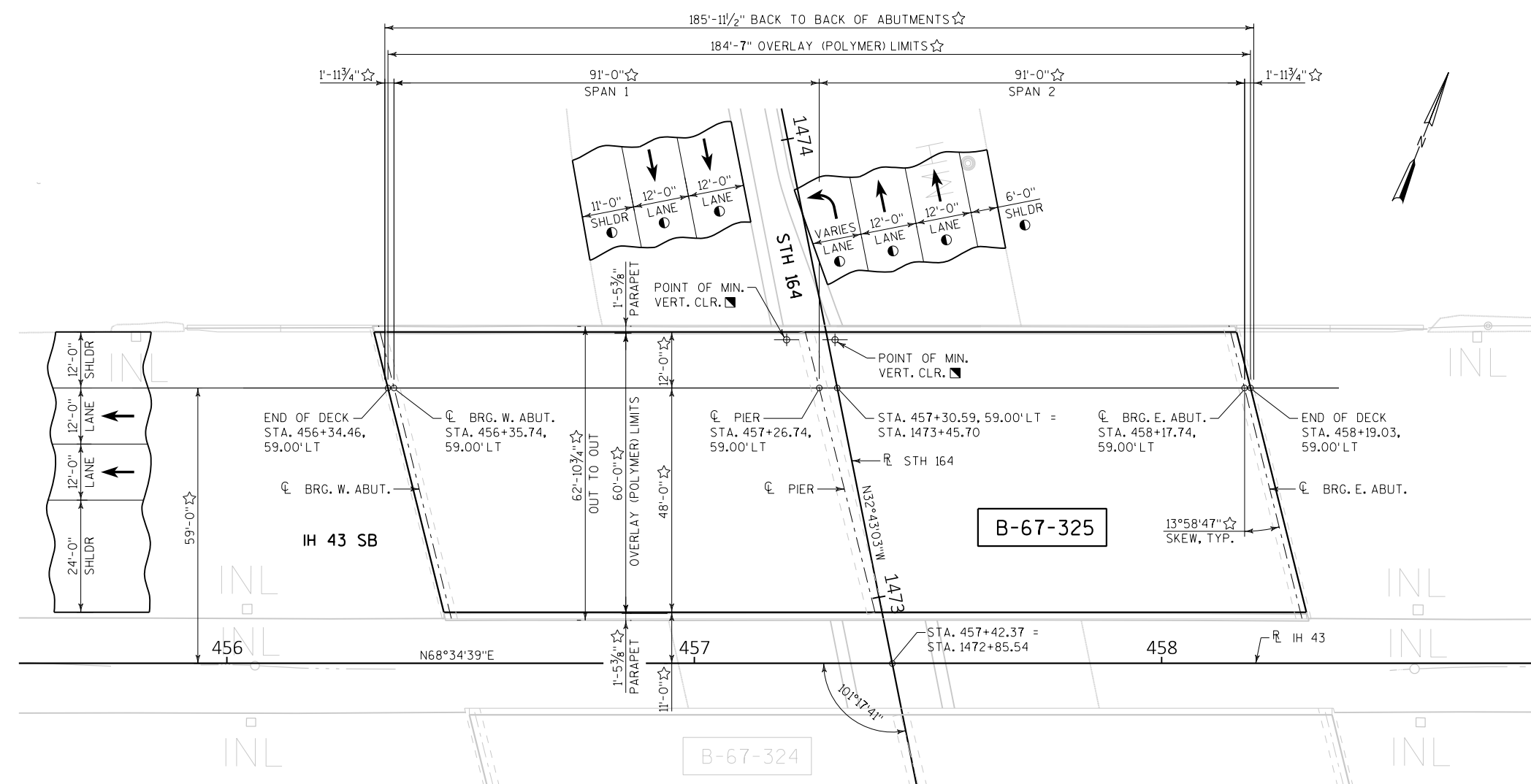
AADT = 17,900 (2015)
AADT = 19,300 (2022)
AADT = 21,300 (2032)
AADT = 23,400 (2042)
RDS = 75 MPH

STH 164

AADT = 16,700 (2015)
AADT = 18,600 (2022)
AADT = 21,200 (2032)
AADT = 23,900 (2042)
RDS = 50 MPH

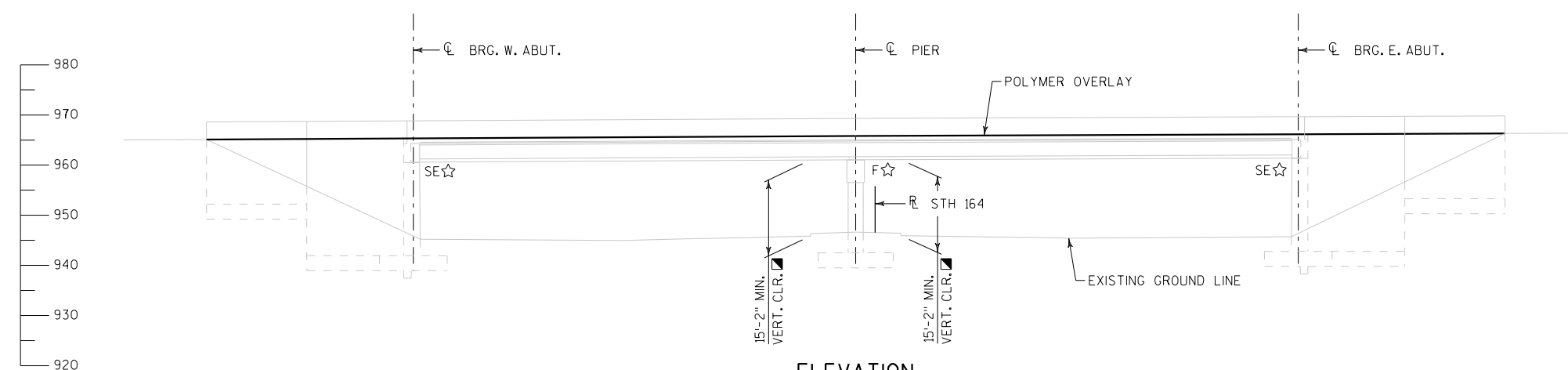
STRUCTURES DESIGN CONTACTS

BRIDGE OFFICE:
WILLIAM DREHER (608) 266-8489
CONSULTANT:
MOHAMMED ZAGLOUL (414) 751-7200



PLAN

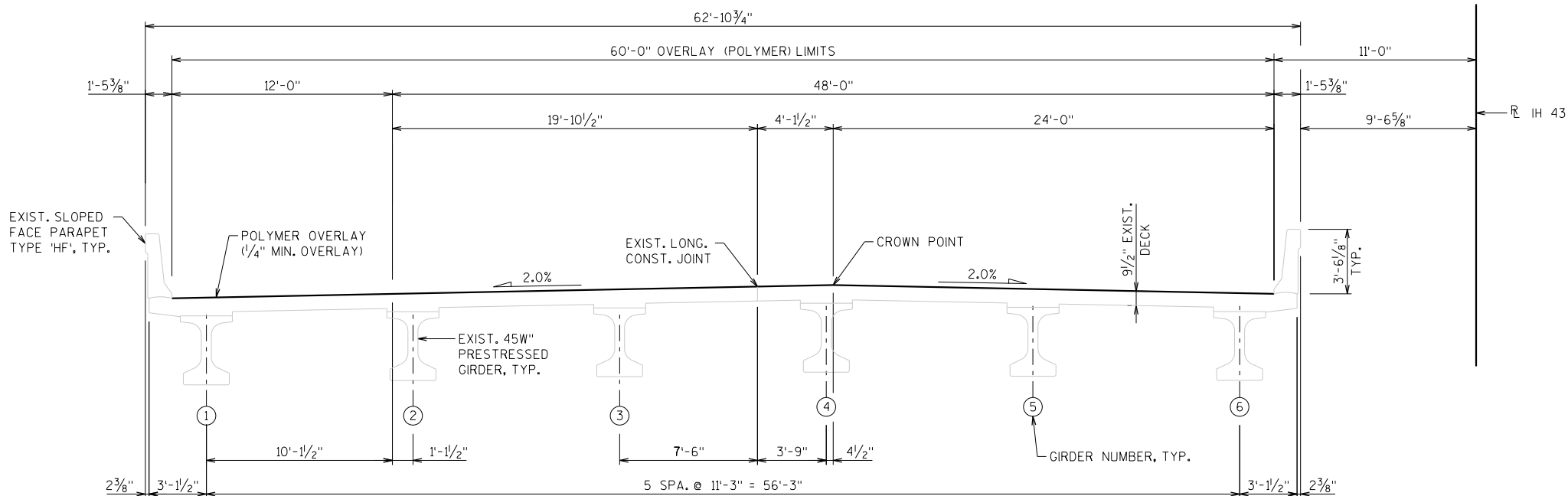
(2-SPAN 45W" PRESTRESSED GIRDER)
(POLYMER OVERLAY)



ELEVATION

(LOOKING NORTH)

PRELIMINARY PLANS



TYPICAL SECTION

(LOOKING EAST)
(DIMENSIONS & CROSS SLOPES BASED ON THE ORIGINAL STRUCTURE PLANS)

GENERAL NOTES

- DRAWINGS SHALL NOT BE SCALED.
- ALL CONCRETE REMOVAL NOT COVERED WITH A POLYMER OVERLAY SHALL BE DEFINED BY A 1 INCH DEEP SAW CUT.
- DIMENSIONS SHOWN ARE BASED ON THE ORIGINAL STRUCTURE PLANS.
- ALL DIMENSIONS ARE IN FEET AND INCHES UNLESS OTHERWISE NOTED.
- ALL STATIONS AND ELEVATIONS ARE IN FEET. ELEVATIONS ARE REFERENCED TO THE NORTH AMERICAN VERTICAL DATUM NAVD88 (2012).
- THE UTILITY INFORMATION SHOWN ON THESE DRAWINGS CONCERNING TYPE AND LOCATION OF UNDERGROUND UTILITIES IS NOT GUARANTEED TO BE ACCURATE OR ALL-INCLUSIVE. THE CONTRACTOR IS RESPONSIBLE FOR MAKING HIS OWN DETERMINATION AS TO TYPE AND LOCATION OF UNDERGROUND UTILITIES AS MAY BE NECESSARY TO AVOID DAMAGE.
- "PREPARATION DECKS TYPE 1", "PREPARATION DECKS TYPE 2" & "FULL-DEPTH DECK REPAIR" AREAS ARE BASED ON THE PLANS AND AS DETERMINED BY THE ENGINEER. DECK PREPARATION AND FULL DEPTH DECK REPAIRS SHALL BE FILLED WITH "CONCRETE MASONRY DECK REPAIR".
- DECK SURFACE PREPARATION IS INCLUDED IN THE BID ITEM "POLYMER OVERLAY".
- CLEAN AND FILL EXISTING LONGITUDINAL AND TRANSVERSE CRACKS WITH PENETRATING EPOXY AS DIRECTED BY THE FIELD ENGINEER.
- AREAS OF "PREPARATION DECKS TYPE 1" SHALL BE DEFINED BY A SAW CUT.
- LOCATIONS OF THE FOLLOWING BID ITEMS SHALL BE DETERMINED IN THE FIELD BY THE PROJECT ENGINEER. QUANTITIES SHOWN FOR THESE BID ITEMS ARE APPROXIMATE.
- CRACK SEALING EPOXY
 - PREPARATION DECKS TYPE 1
 - PREPARATION DECKS TYPE 2
 - FULL DEPTH DECK REPAIR

TOTAL ESTIMATED QUANTITIES

ITEM NO.	BID ITEMS	UNIT	WEST ABUTMENT	PIER	EAST ABUTMENT	SUPER.	TOTAL
203.0225.S.XXX	DEBRIS CONTAINMENT B-67-325	LS	-	-	-	-	-
502.0717.S	CRACK SEALING EPOXY	LF	-	-	-	-	-
509.0301	PREPARATION DECKS TYPE 1	SY	-	-	-	-	-
509.0302	PREPARATION DECKS TYPE 2	SY	-	-	-	-	-
509.0310.S	SAWING PAVEMENT DECK PREPARATION AREAS	LF	-	-	-	-	-
509.2000	FULL-DEPTH DECK REPAIR	SY	-	-	-	-	-
509.2100.S	CONCRETE MASONRY DECK REPAIR	CY	-	-	-	-	-
509.5100.S	POLYMER OVERLAY	SY	-	-	-	-	-

ALL ITEMS ARE CATEGORY XXXX

NO.	DATE	REVISION	BY
STATE OF WISCONSIN DEPARTMENT OF TRANSPORTATION			
STRUCTURE B-67-325			
DRAWN BY AJA		PLANS CK'D. MHZ	
TYPICAL SECTION, GENERAL NOTES & QUANTITIES			SHEET 2 OF 2

PRELIMINARY PLANS