

DESIGN DATA

LIVE LOAD:

DESIGN RATING: HL-93
INVENTORY RATING FACTOR: 1XX
OPERATING RATING FACTOR: 1XX
WISCONSIN STANDARD PERMIT VEHICLE (WIS-SPV): XXX KIPS

MATERIAL PROPERTIES:

CONCRETE MASONRY - DECK PATCHING.....f'c = 4,000 psi

LEGEND

→ DIRECTION OF TRAFFIC

☆ DIMENSIONS TAKEN FROM ORIGINAL STRUCTURE PLANS

● DIMENSIONS TAKEN FROM EXISTING SURVEY

■ DIMENSION AND LOCATION TAKEN FROM THE INSPECTION
REPORT DATED OCTOBER 22, 2018

LIST OF DRAWINGS

1. GENERAL PLAN & ELEVATION
2. TYPICAL SECTION, GENERAL NOTES & QUANTITIES

TRAFFIC DATA

IH 43 NB

AADT = 22,700 (2015)
AADT = 24,600 (2022)
AADT = 27,200 (2032)
AADT = 29,700 (2042)
RDS = 75 MPH

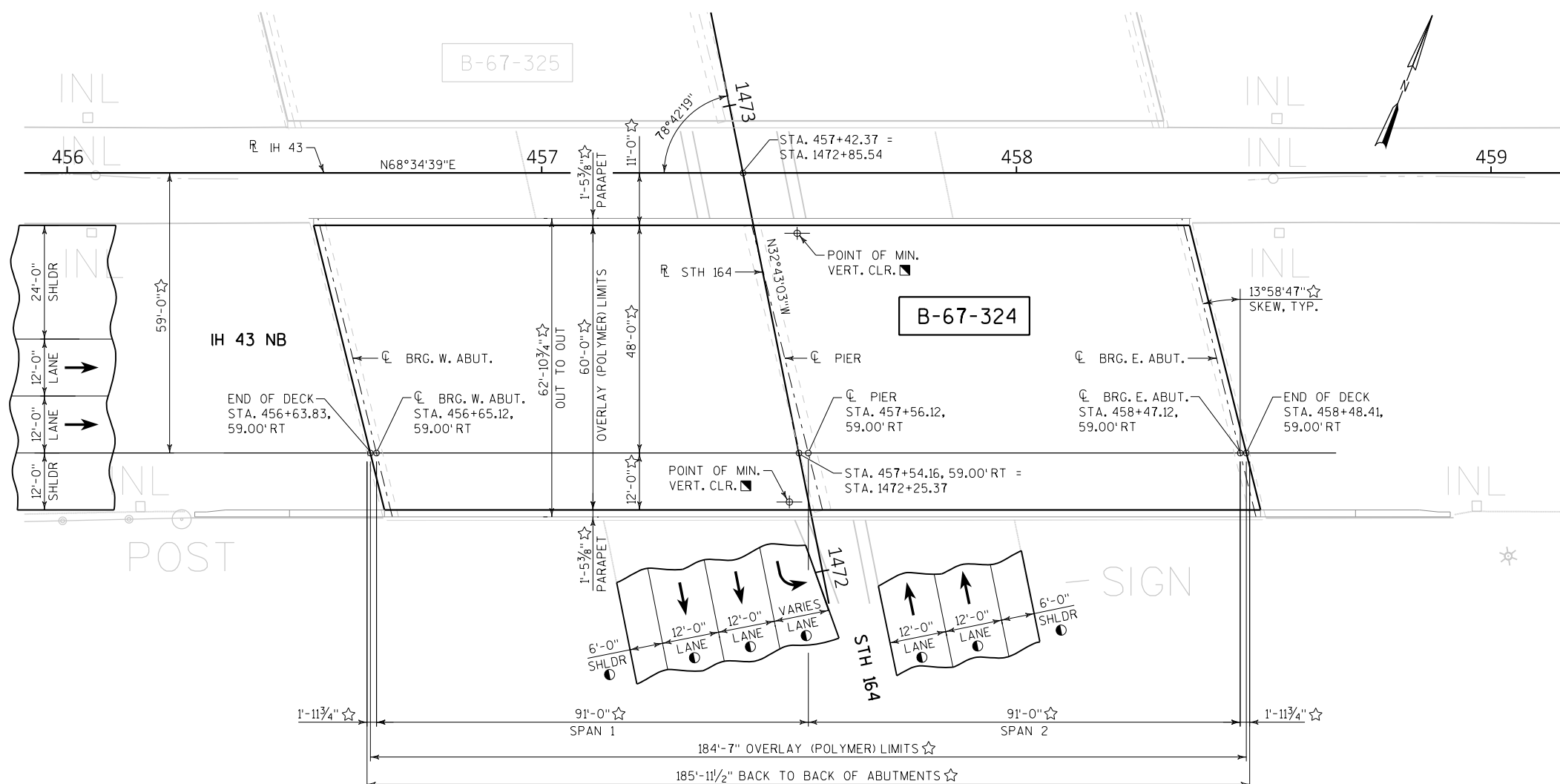
STH 164

AADT = 16,700 (2015)
AADT = 18,600 (2022)
AADT = 21,200 (2032)
AADT = 23,900 (2042)
RDS = 50 MPH

STRUCTURES DESIGN CONTACTS

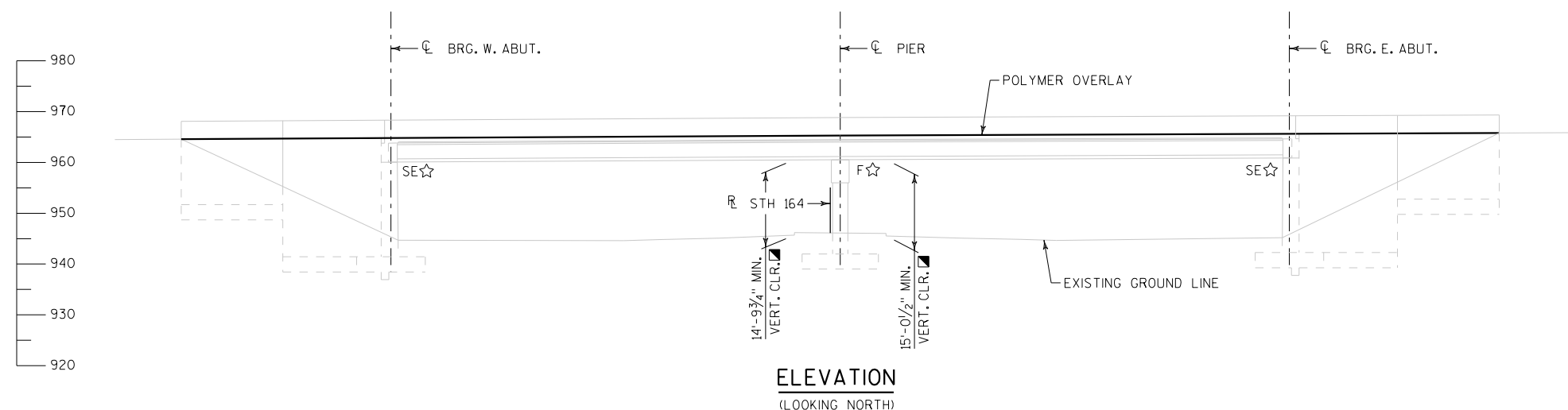
BRIDGE OFFICE:
WILLIAM DREHER (608) 266-8489
CONSULTANT:
MOHAMMED ZAGLOUL (414) 751-7200

NO.	DATE	REVISION	BY
ORIGINAL PLANS PREPARED BY KAPUR & ASSOCIATES CONSULTING ENGINEERS 414.751.7200			
STATE OF WISCONSIN DEPARTMENT OF TRANSPORTATION			
ACCEPTED		CHIEF STRUCTURES DESIGN ENGINEER	DATE
STRUCTURE B-67-324			
IH 43 NB OVER STH 164			
COUNTY	WAUKESHA	TOWN	VERNON
DESIGN SPEC. REHABILITATION N/A			
DESIGNED BY	AJA	DESIGN CK'D. MHZ	DRAWN BY
			AJA
GENERAL PLAN & ELEVATION			PLANS CK'D. MHZ
			SHEET 1 OF 2



PLAN

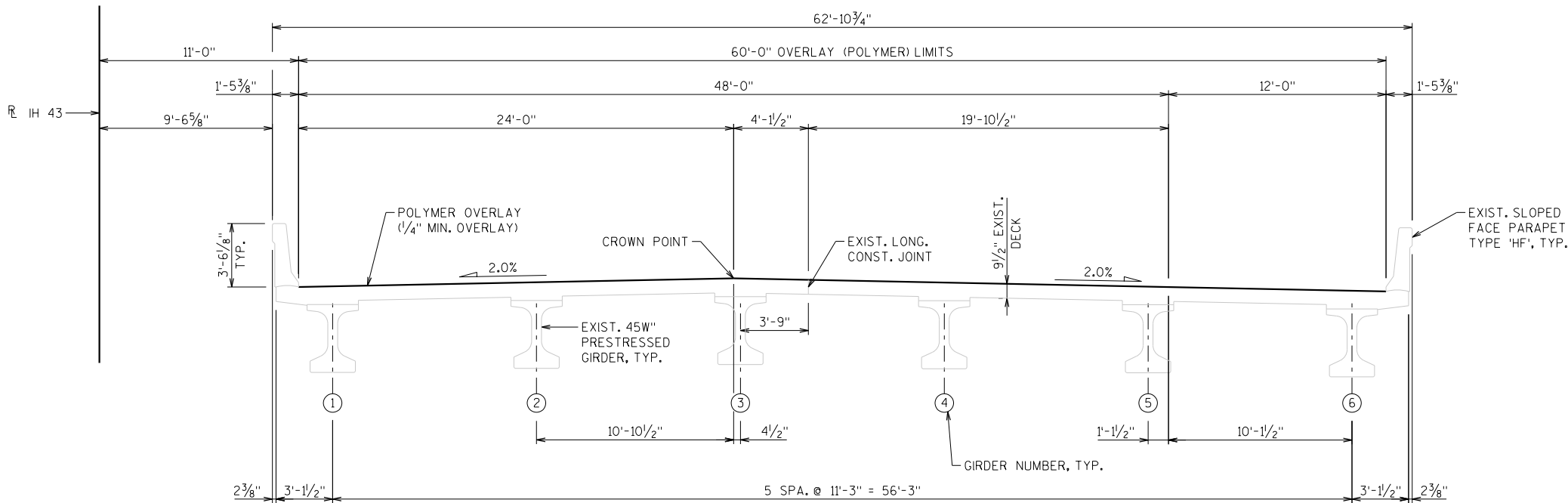
(2-SPAN 45W" PRESTRESSED GIRDER)
(POLYMER OVERLAY)



ELEVATION

(LOOKING NORTH)

PRELIMINARY PLANS



TYPICAL SECTION

(LOOKING EAST)

(DIMENSIONS & CROSS SLOPES BASED ON THE ORIGINAL STRUCTURE PLANS)

GENERAL NOTES

DRAWINGS SHALL NOT BE SCALED.

ALL CONCRETE REMOVAL NOT COVERED WITH A POLYMER OVERLAY SHALL BE DEFINED BY A 1 INCH DEEP SAW CUT.

DIMENSIONS SHOWN ARE BASED ON THE ORIGINAL STRUCTURE PLANS.

ALL DIMENSIONS ARE IN FEET AND INCHES UNLESS OTHERWISE NOTED.

ALL STATIONS AND ELEVATIONS ARE IN FEET. ELEVATIONS ARE REFERENCED TO THE NORTH AMERICAN VERTICAL DATUM NAVD88 (2012).

THE UTILITY INFORMATION SHOWN ON THESE DRAWINGS CONCERNING TYPE AND LOCATION OF UNDERGROUND UTILITIES IS NOT GUARANTEED TO BE ACCURATE OR ALL-INCLUSIVE. THE CONTRACTOR IS RESPONSIBLE FOR MAKING HIS OWN DETERMINATION AS TO TYPE AND LOCATION OF UNDERGROUND UTILITIES AS MAY BE NECESSARY TO AVOID DAMAGE.

"PREPARATION DECKS TYPE 1", "PREPARATION DECKS TYPE 2" & "FULL-DEPTH DECK REPAIR" AREAS ARE BASED ON THE PLANS AND AS DETERMINED BY THE ENGINEER. DECK PREPARATION AND FULL DEPTH DECK REPAIRS SHALL BE FILLED WITH "CONCRETE MASONRY DECK REPAIR".

DECK SURFACE PREPARATION IS INCLUDED IN THE BID ITEM "POLYMER OVERLAY".

CLEAN AND FILL EXISTING LONGITUDINAL AND TRANSVERSE CRACKS WITH PENETRATING EPOXY AS DIRECTED BY THE FIELD ENGINEER.

AREAS OF "PREPARATION DECKS TYPE 1" SHALL BE DEFINED BY A SAW CUT.

LOCATIONS OF THE FOLLOWING BID ITEMS SHALL BE DETERMINED IN THE FIELD BY THE PROJECT ENGINEER. QUANTITIES SHOWN FOR THESE BID ITEMS ARE APPROXIMATE.

- CRACK SEALING EPOXY
- PREPARATION DECKS TYPE 1
- PREPARATION DECKS TYPE 2
- FULL DEPTH DECK REPAIR

TOTAL ESTIMATED QUANTITIES

ITEM NO.	BID ITEMS	UNIT	WEST ABUTMENT	PIER	EAST ABUTMENT	SUPER.	TOTAL
203.0225.S.XXX	DEBRIS CONTAINMENT B-67-324	LS	-	-	-	-	-
502.0717.S	CRACK SEALING EPOXY	LF	-	-	-	-	-
509.0301	PREPARATION DECKS TYPE 1	SY	-	-	-	-	-
509.0302	PREPARATION DECKS TYPE 2	SY	-	-	-	-	-
509.0310.S	SAWING PAVEMENT DECK PREPARATION AREAS	LF	-	-	-	-	-
509.2000	FULL-DEPTH DECK REPAIR	SY	-	-	-	-	-
509.2100.S	CONCRETE MASONRY DECK REPAIR	CY	-	-	-	-	-
509.5100.S	POLYMER OVERLAY	SY	-	-	-	-	-

ALL ITEMS ARE CATEGORY XXXX

NO.	DATE	REVISION	BY
STATE OF WISCONSIN DEPARTMENT OF TRANSPORTATION			
STRUCTURE B-67-324			
DRAWN BY AJA		PLANS CK'D. MHZ	
TYPICAL SECTION, GENERAL NOTES & QUANTITIES			SHEET 2 OF 2

PRELIMINARY PLANS