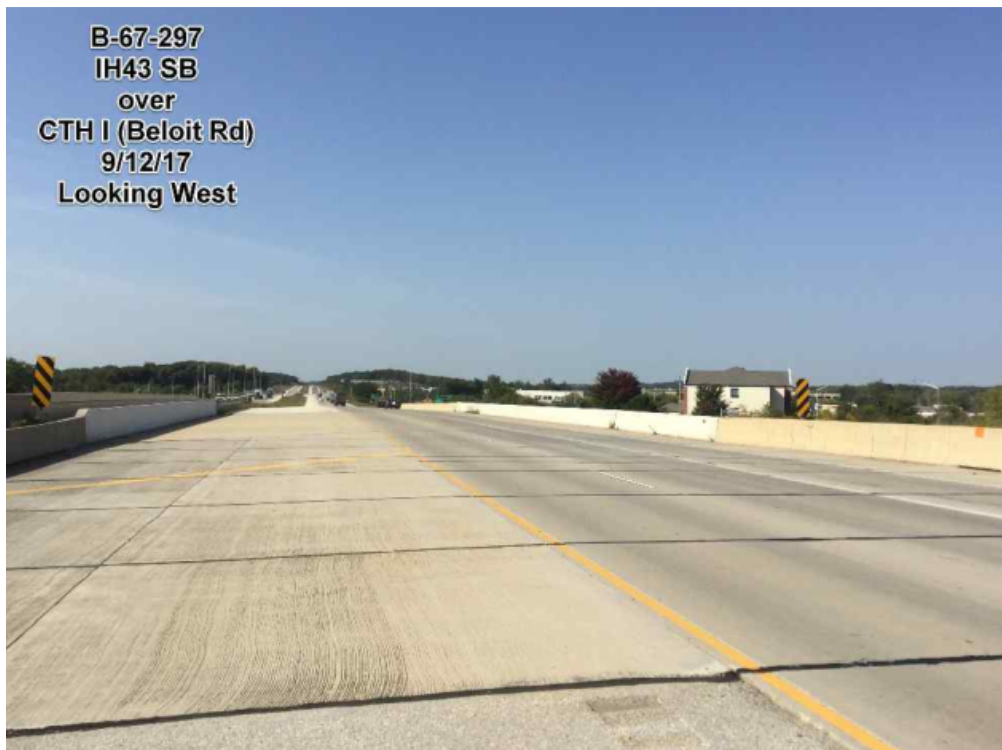


WisDOT Project ID 1090-35-00 / 1090-35-70
Existing Bridge B-67-297 – IH 43 SB over CTH I (Beloit Rd)
Photos of Existing Conditions



North elevation, looking south. Photo from WisDOT inspection report.

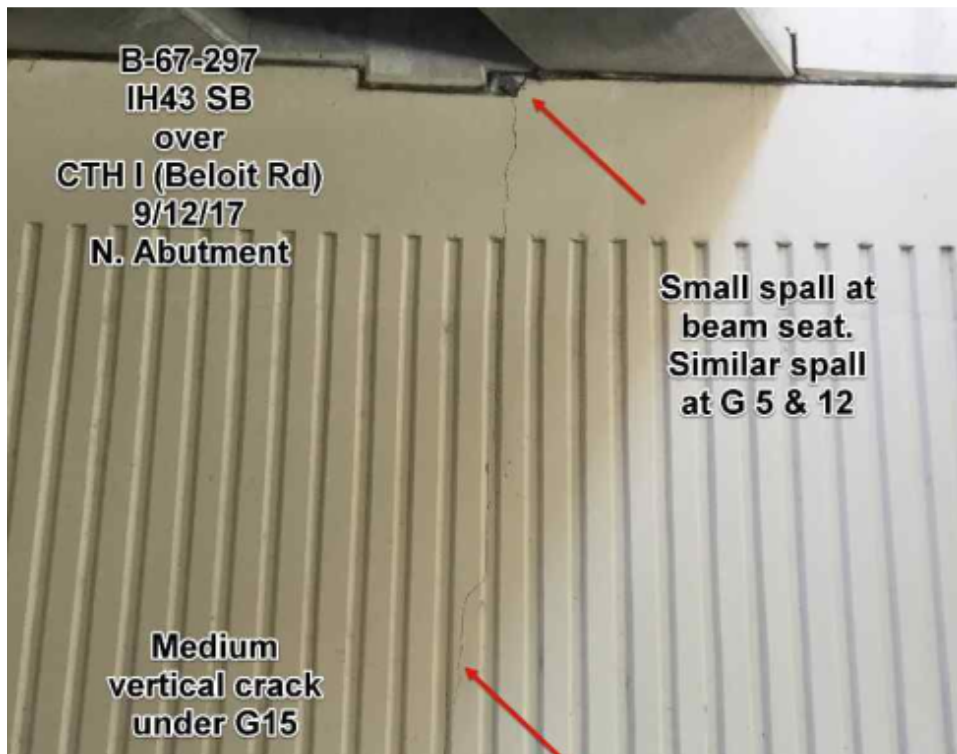


Overview of top of deck, looking west. Photo from WisDOT inspection report.

WisDOT Project ID 1090-35-00 / 1090-35-70
Existing Bridge B-67-297 – IH 43 SB over CTH I (Beloit Rd)
Photos of Existing Conditions



West Rail, Spalls. Photo from WisDOT inspection report.



North abutment, spalls. Photo from WisDOT inspection report.

WisDOT Project ID 1090-35-00 / 1090-35-70
Existing Bridge B-67-297 – IH 43 SB over CTH I (Beloit Rd)
Photos of Existing Conditions



North abutment, looking east. Photo from WisDOT Inspection Report.



Wearing surface at west, looking north. Photo from Google Earth.