

## DESIGN DATA

LIVE LOAD:  
DESIGN LOADING: HS20  
INVENTORY RATING: HSXX  
OPERATING RATING: HSXX  
WISCONSIN STANDARD PERMIT VEHICLE (WIS-SPV): XXX KIPS

MATERIAL PROPERTIES:  
CONCRETE MASONRY - DECK PATCHING.....f'c = 4,000 psi

## LIST OF DRAWINGS

1. GENERAL PLAN & ELEVATION
2. TYPICAL SECTION, GENERAL NOTES & QUANTITIES

## LEGEND

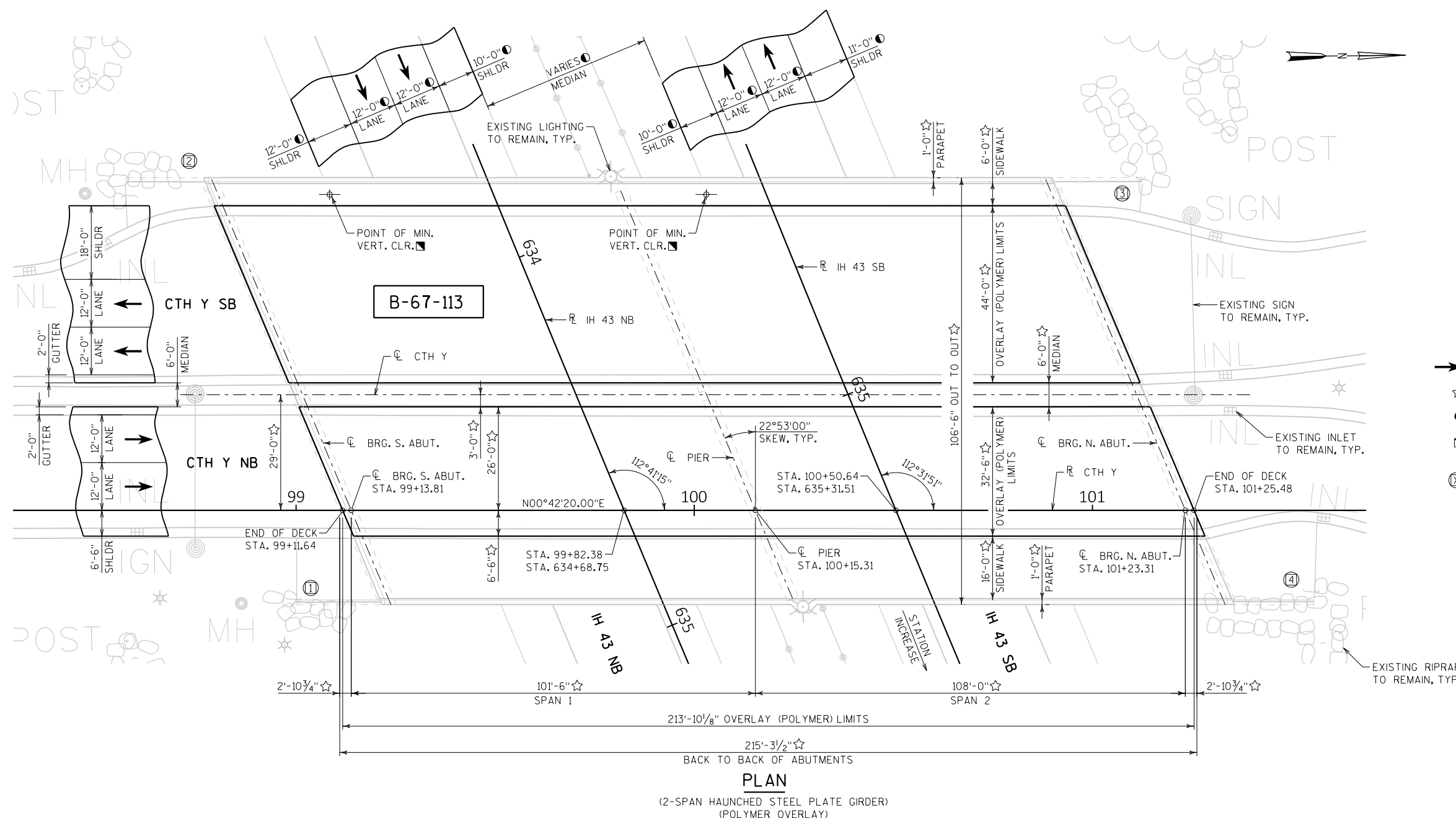
- ➔ DIRECTION OF TRAFFIC
- ☆ DIMENSIONS TAKEN FROM ORIGINAL STRUCTURE PLANS
- DIMENSIONS TAKEN FROM EXISTING SURVEY
- DIMENSION AND LOCATION TAKEN FROM THE INSPECTION REPORT DATED SEPTEMBER 4, 2018
- ⊗ WINGWALL NUMBER

## TRAFFIC DATA

IH 43	CTH Y
AADT = 53,000 (2015)	AADT = 17,100 (2015)
AADT = 55,200 (2022)	AADT = 18,700 (2022)
AADT = 58,400 (2032)	AADT = 20,900 (2032)
AADT = 61,500 (2042)	AADT = 23,000 (2042)
RDS = 75 MPH	RDS = 45 MPH

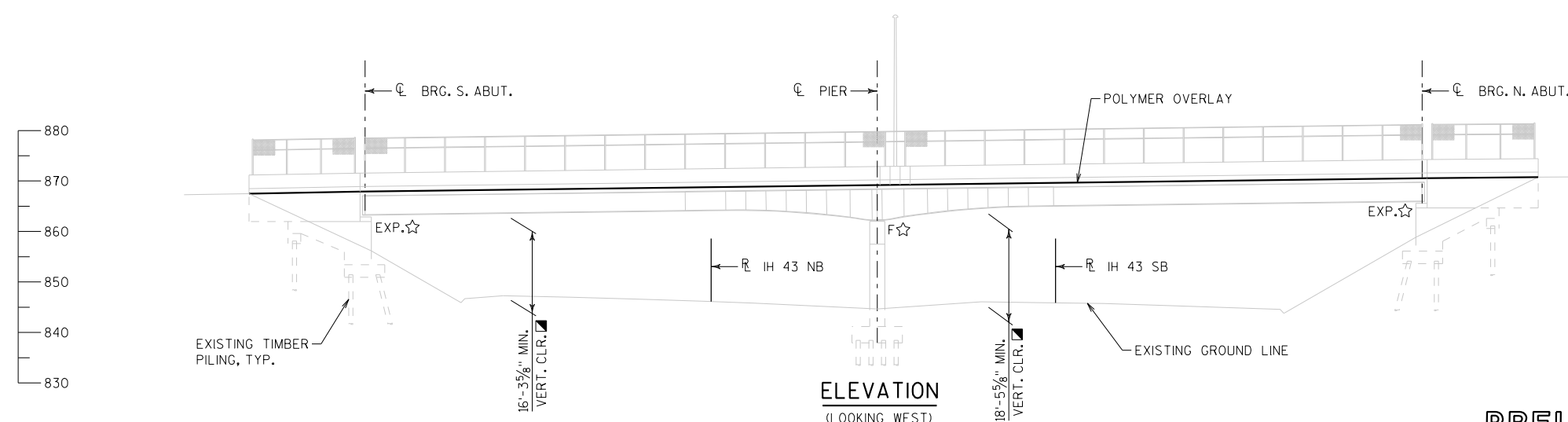
## STRUCTURES DESIGN CONTACTS

BRIDGE OFFICE:  
WILLIAM DREHER (608) 266-8489  
CONSULTANT:  
MOHAMMED ZAGLOUL (414) 751-7200



## PLAN


(2-SPAN HAUNCHED STEEL PLATE GIRDER)  
(POLYMER OVERLAY)



## ELEVATION

(LOOKING WEST)

## PRELIMINARY PLANS

NO.	DATE	REVISION	BY
ORIGINAL PLANS PREPARED BY			
			
STATE OF WISCONSIN DEPARTMENT OF TRANSPORTATION			
ACCEPTED _____ DATE _____			
CHIEF STRUCTURES DESIGN ENGINEER			
STRUCTURE B-67-113			
CTH Y OVER IH 43			
COUNTY	WAUKESHA	CITY	NEW BERLIN
DESIGN SPEC.	REHABILITATION N/A		
DESIGNED BY	AJA	DESIGN CK'D.	MHZ
DRAWN BY	AJA	PLANS CK'D.	MHZ
GENERAL PLAN & ELEVATION			SHEET 1 OF 2



(DIMENSIONS &amp; CROSS SLOPES BASED ON THE ORIGINAL STRUCTURE PLANS)

NO.	DATE	REVISION	BY
STATE OF WISCONSIN DEPARTMENT OF TRANSPORTATION			
STRUCTURE B-67-113			
		DRAWN BY	AJA
		PLANS CK'D.	MHZ
TYPICAL SECTION, GENERAL NOTES & QUANTITIES		SHEET 2 OF 2	

## PRELIMINARY PLANS