

LIST OF DRAWINGS

1. GENERAL PLAN & ELEVATION
2. TYPICAL SECTION, GENERAL NOTES & QUANTITIES

DESIGN DATA

LIVE LOAD
DESIGN RATING: HS20
INVENTORY RATING: HSXX
OPERATING RATING: HSXX
WISCONSIN STANDARD PERMIT VEHICLE (WIS-SPV) = XXX KIPS

MATERIAL PROPERTIES
CONCRETE MASONRY - DECK PATCHING $f'_c = 4,000$ PSI

TRAFFIC DATA

IH 43
AADT = 53,000 (2015)
AADT = 55,200 (2022)
AADT = 58,400 (2032)
AADT = 61,500 (2042)
RDS = 70 MPH

MARTIN RD
AADT = 2,000 (2009)
AADT = 2,300 (2022)
AADT = 2,500 (2032)
AADT = 2,800 (2042)
RDS = 35 MPH

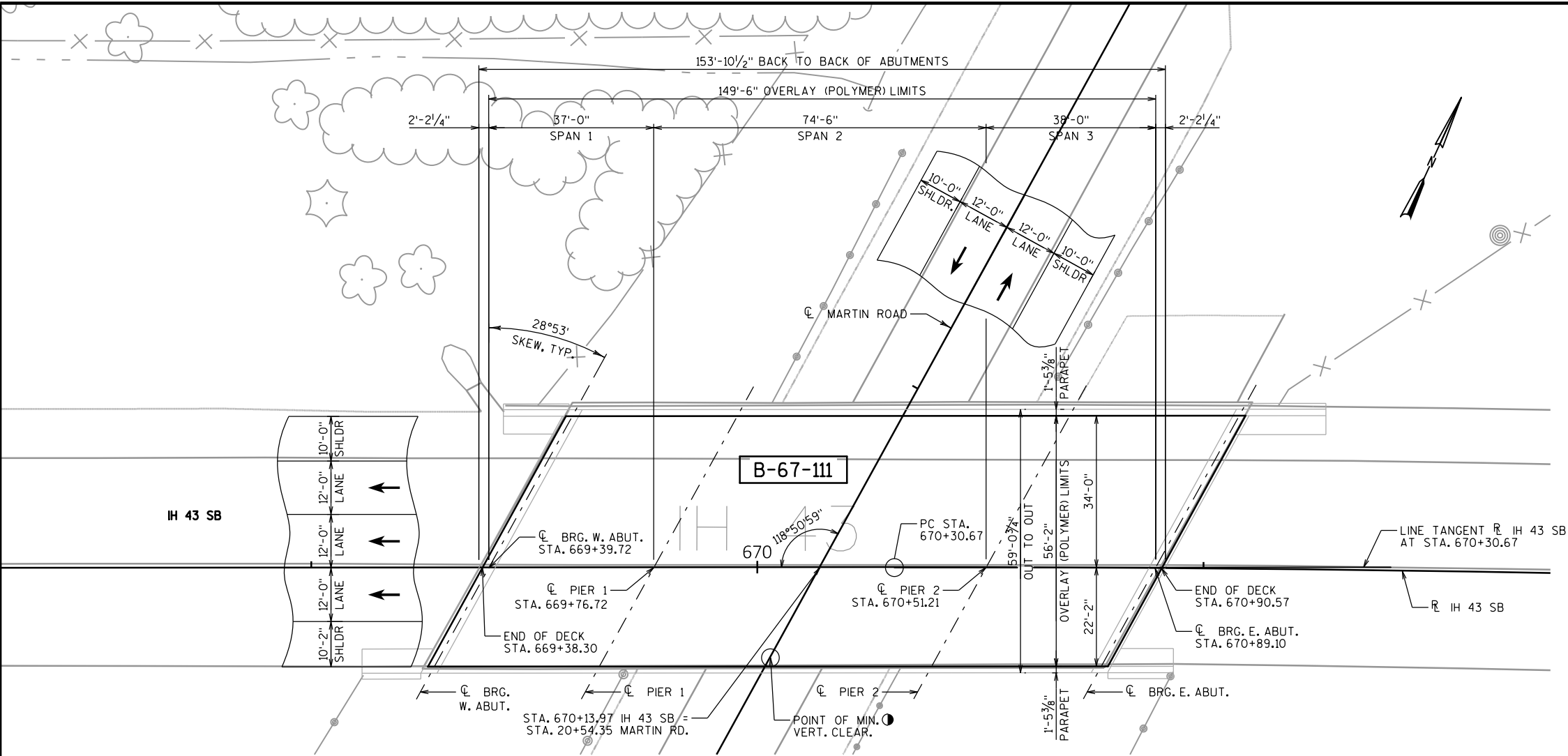
LEGEND

- TRAFFIC DIRECTION
● LOCATION PER EXISTING PLANS AND MIN. CLEARANCE
TAKEN FROM HSI SYSTEM (10/11/2016)

STRUCTURES DESIGN CONTACTS

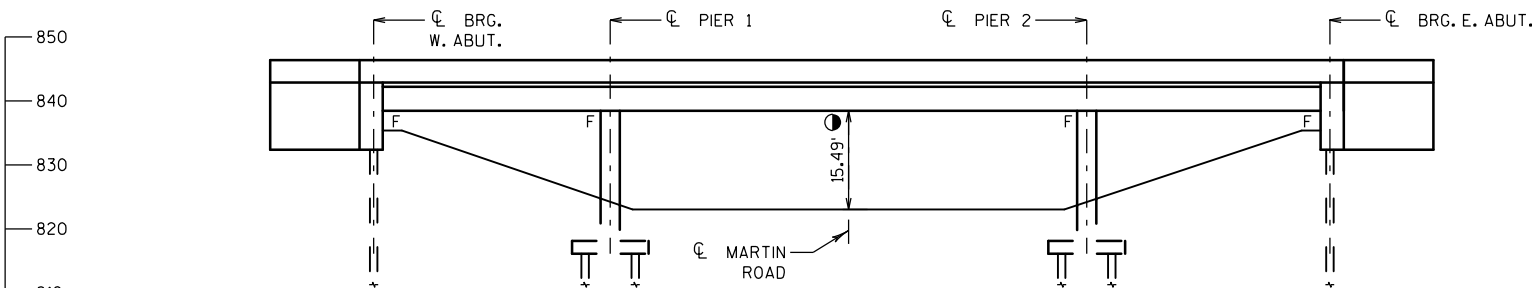
BRIDGE OFFICE:
WILLIAM DREHER (608) 266-8489
CONSULTANT:
PAT CASHIN (414) 359-2300

NO.		DATE		REVISION		BY		
ORIGINAL PLANS PREPARED BY								
HNTB				11414 W. PARK PLACE MILWAUKEE, WI 53224 (414) 359-2300				
STATE OF WISCONSIN DEPARTMENT OF TRANSPORTATION								
ACCEPTED _____ CHIEF STRUCTURES DESIGN ENGINEER DATE _____								
STRUCTURE B-67-111								
IH 43 SB OVER MARTIN ROAD								
COUNTY		WAUKESHA		TOWN/CITY/VILLAGE		NEW BERLIN		
DESIGN SPEC. REHABILITATION N/A								
DESIGNED BY		HDA	DESIGN CK'D.	MPM	DRAWN BY	HDA	PLANS CK'D.	MPM
GENERAL PLAN & ELEVATION						SHEET 1 OF 2		



PLAN

(3-SPAN 45"/45W" PRESTRESSED GIRDER)
POLYMER OVERLAY



ELEVATION

PRELIMINARY PLANS

GENERAL NOTES

DRAWINGS SHALL NOT BE SCALED.

DIMENSIONS SHOWN ARE BASED ON THE EXISTING STRUCTURE PLANS.

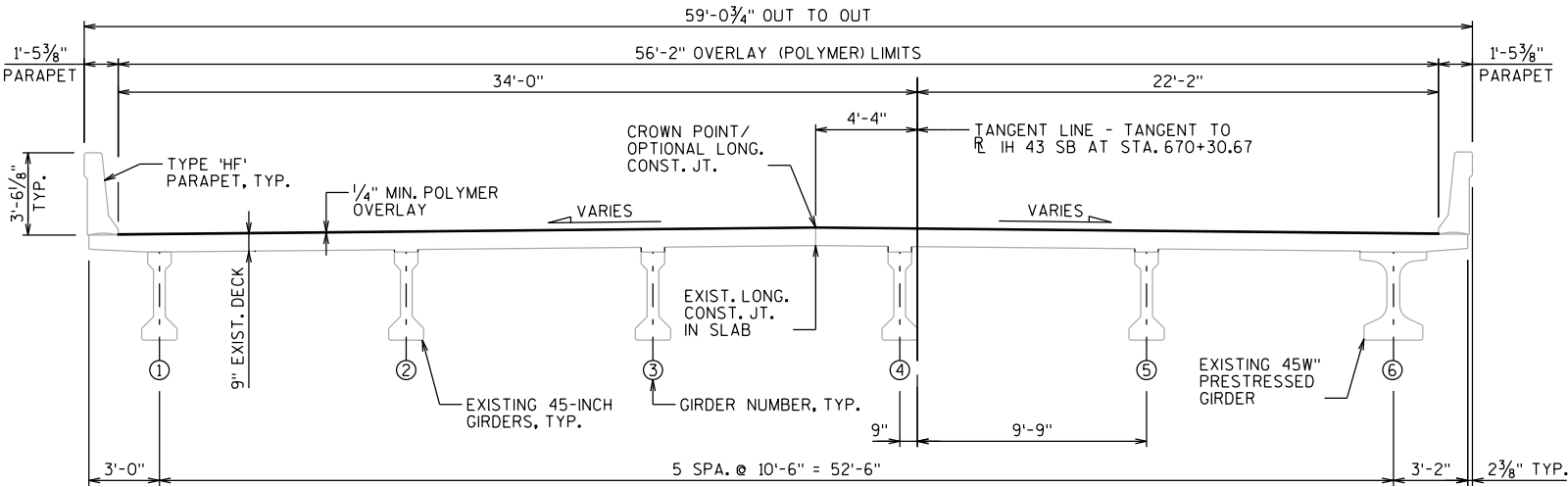
ALL DIMENSIONS ARE IN FEET AND INCHES UNLESS OTHERWISE NOTED. ALL STATIONS AND ELEVATIONS ARE IN FEET.

THE UTILITY INFORMATION SHOWN ON THESE DRAWINGS CONCERNING TYPE AND LOCATION IS NOT GUARANTEED TO BE ACCURATE OR ALL-INCLUSIVE. THE CONTRACTOR IS RESPONSIBLE FOR MAKING HIS OWN DETERMINATION AS TO TYPE AND LOCATION OF UTILITIES AS MAY BE NECESSARY TO AVOID DAMAGE.

DECK SURFACE PREPARATION IS INCLUDED IN THE BID ITEM "POLYMER OVERLAY".

AREAS OF "PREPARATION DECKS TYPE 1" SHALL BE DEFINED BY A SAWCUT.

"PREPARATION DECKS TYPE 1", "PREPARATION DECKS TYPE 2", AND "FULL-DEPTH DECK REPAIR" AREAS ARE BASED ON THE PLANS AND AS DETERMINED BY THE ENGINEER. DECK PREPAATION AND FULL-DEPTH DECK REPAIR SHALL BE FILLED WITH "CONCRETE MASONRY DECK REPAIR". <AREAS TO BE ADDED FOR FINAL DESIGN>



TYPICAL SECTION

(LOOKING EAST)

TOTAL ESTIMATED QUANTITIES

ITEM NO.	BID ITEM	UNIT	STAGE 1	STAGE 1	TOTAL
509.0301	PREPARATION DECKS TYPE 1	SY	X	X	X
509.0302	PREPARATION DECKS TYPE 2	SY			
509.0310.S	SAWING PAVEMENT DECK PREPARATION AREAS	LF			
509.2000	FULL-DEPTH DECK REPAIR	SY			
509.2100.S	CONCRETE MASONRY DECK REPAIR	CY			
509.5100.S	POLYMER OVERLAY	SY			

ALL ITEMS ARE CATEGORY XXXX

NO.	DATE	REVISION	BY
STATE OF WISCONSIN DEPARTMENT OF TRANSPORTATION			
STRUCTURE B-67-111			
DRAWN BY		HDA	PLANS CK'D. MPM
TYPICAL SECTION, GENERAL NOTES & QUANTITIES			SHEET 2 OF 2

PRELIMINARY PLANS