

LIST OF DRAWINGS

1. GENERAL PLAN & ELEVATION
2. TYPICAL SECTIONS, GENERAL NOTES & QUANTITIES

LEGEND

- TRAFFIC DIRECTION
● CLEARANCE LOCATION AND MIN. DIMENSION FROM 11-3-2017 SURVEY
⊗ WING NUMBER
✱ LOCATION OF "ANCHOR ASSEMBLIES FOR STEEL PLATE BEAM GUARD"

PLAN

(CONCRETE OVERLAY, 3-SPAN STEEL GIRDERS)

ELEVATION

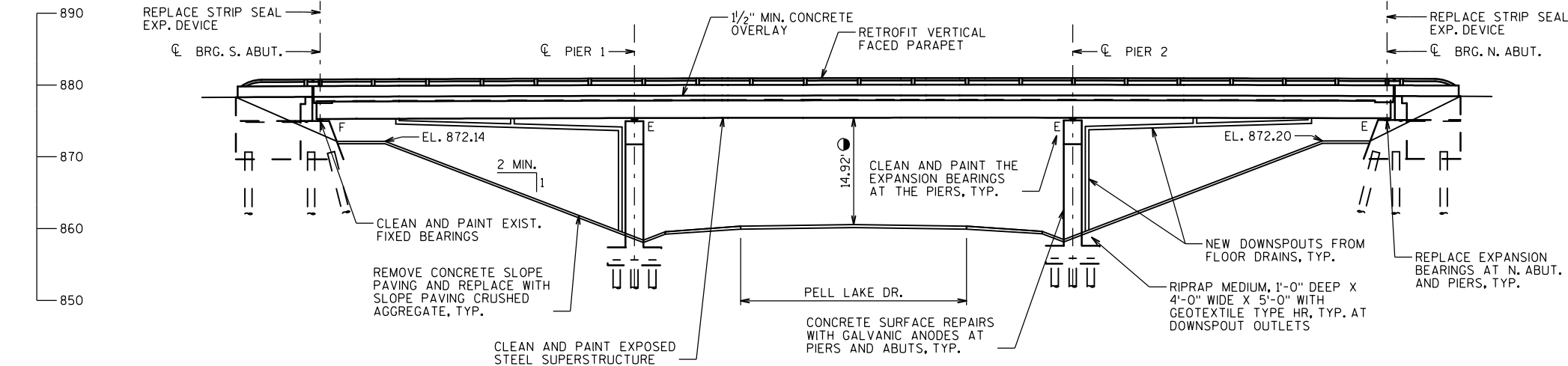
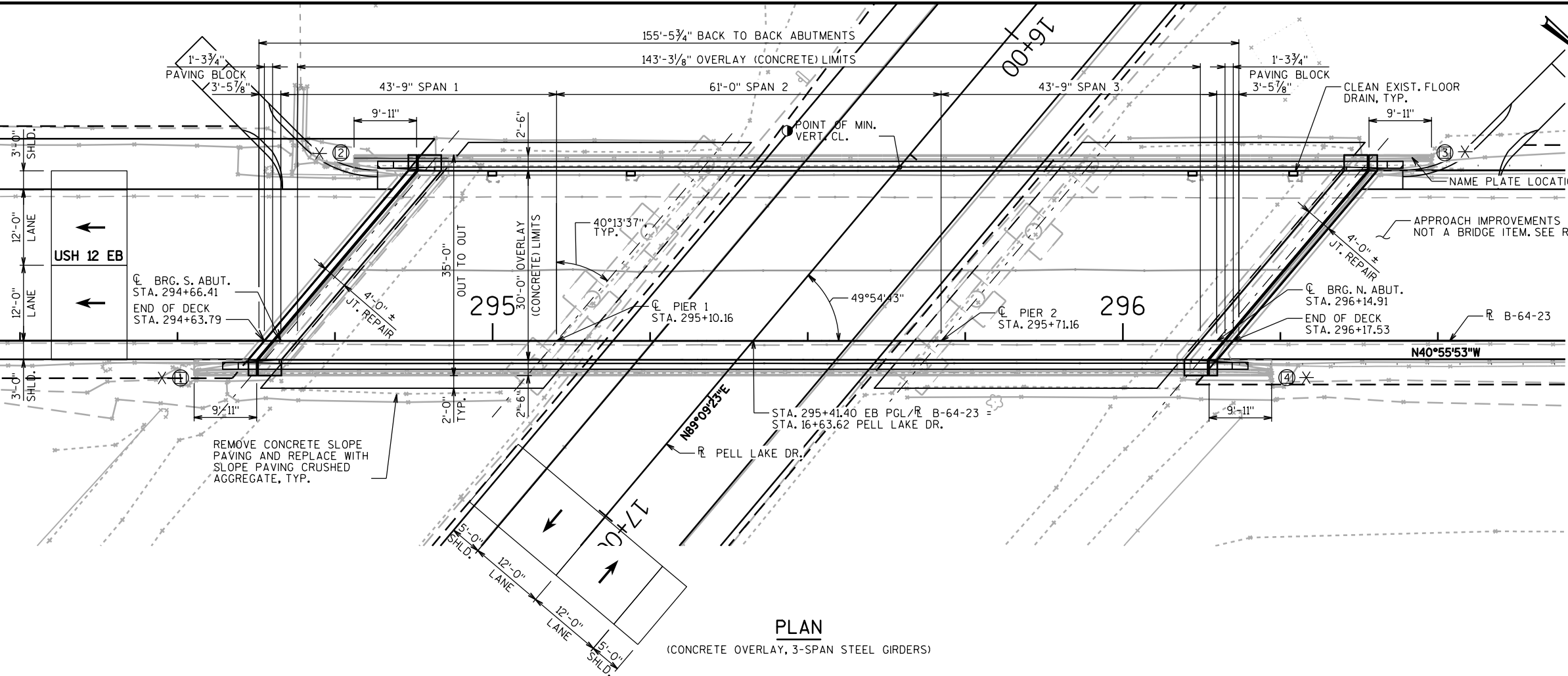
(LOOKING WEST)

STRUCTURES DESIGN CONTACTS

BRIDGE OFFICE:
WILLIAM DREHER (608) 266-8489
CONSULTANT:
PAT CASHIN (414) 359-2300

NO.	DATE	REVISION	BY
ORIGINAL PLANS PREPARED BY			
HNTB 11414 W. PARK PLACE MILWAUKEE, WI 53224 (414) 359-2300			
STATE OF WISCONSIN DEPARTMENT OF TRANSPORTATION			
ACCEPTED _____ CHIEF STRUCTURES DESIGN ENGINEER DATE _____			
STRUCTURE B-64-23			
USH 12 EB/SB OVER PELL LAKE DR.			
COUNTY	WALWORTH	TOWN	BLOOMFIELD
DESIGN SPEC. REHABILITATION N/A			
DESIGNED BY	HDA	DESIGN CK'D.	PJC
DRAWN BY	HDA	PLANS CK'D.	PJC
GENERAL PLAN & ELEVATION			SHEET 1 OF 2

PRELIMINARY PLANS



TRAFFIC DATA

USH 12
EXISTING A.D.T. = 9,500 (2015)
FUTURE A.D.T. = 11,800 (2040)
R.D.S. = 70 M.P.H.

PELL LAKE DR.

EXISTING A.D.T. = 3,700 (2015)
FUTURE A.D.T. = 5,200 (2040)
R.D.S. = 40 M.P.H.

DESIGN DATA

LIVE LOAD

INVENTORY RATING: HSXX
OPERATING RATING: HSXX
WISCONSIN STANDARD PERMIT VEHICLE (WIS-SPV) = XXX KIPS

MATERIAL PROPERTIES

CONCRETE MASONRY:
SUPERSTRUCTURE..... f'c = 4,000 psi
ALL OTHER..... f'c = 3,500 psi
BAR STEEL REINFORCEMENT..... fy = 60,000 psi

GENERAL NOTES

DRAWINGS SHALL NOT BE SCALED.

DIMENSIONS SHOWN ARE BASED ON THE EXISTING STRUCTURE PLANS.

ALL DIMENSIONS ARE IN FEET AND INCHES UNLESS OTHERWISE NOTED. ALL STATIONS AND ELEVATIONS ARE IN FEET.

INCLUDE THE FOLLOWING WORK IN THE BID PRICE FOR "CONCRETE MASONRY BRIDGES": REMOVAL OF THE TUBULAR RAILINGS, REMOVAL OF TOES OF THE BRUSH CURBS, AND REMOVAL OF LOOSE CONCRETE ON THE TOPS AND INSIDE FACES OF THE CONCRETE PARAPETS AND THE BRUSH CURBS FOR ENTIRE LENGTH OF BRIDGE AND WINGWALLS.

REMOVAL OF EXISTING CONCRETE SLOPE PAVING PAID FOR UNDER "REMOVING CONCRETE SLOPE PAVING".

APPLY "PROTECTIVE SURFACE TREATMENT" TO THE ENTIRE TOP SURFACE OF THE NEW CONCRETE OVERLAY, THE TOP OF ANY NEW DECK, AND THE TOPS OF PAVING BLOCKS.

APPLY "PIGMENTED SURFACE SEALER" TO THE TOP AND INSIDE FACES OF NEW 42SS PARAPETS.

"PREPARATION DECKS TYPE 1", "PREPARATION DECKS TYPE 2", AND "FULL-DEPTH DECK REPAIR" AREAS ARE BASED ON THE PLANS AND AS DETERMINED BY THE ENGINEER. DECK PREPARATION AND FULL-DEPTH DECK REPAIRS SHALL BE FILLED WITH "CONCRETE MASONRY OVERLAY DECKS". <AREAS TO BE ADDED FOR FINAL PLANS.>

"CONCRETE SURFACE REPAIR" AREAS SHOWN IN THE QUANTITIES TABLE ARE BASED ON THE BRIDGE INSPECTION REPORT AND ARE APPROXIMATE. EXACT AREAS OF REPAIR SHALL BE DETERMINED IN THE FIELD BY THE PROJECT ENGINEER. ALL SUBSTRUCTURE CONCRETE SURFACE REPAIRS SHALL INCLUDE "EMBEDDED GALVANIC ANODES", PAID FOR SEPARATELY.

ANY EXCAVATION REQUIRED TO COMPLETE THE CONCRETE OVERLAY OR JOINT REPAIRS AT THE ABUTMENTS IS TO BE CONSIDERED INCIDENTAL TO THE BID ITEM "CONCRETE MASONRY OVERLAY DECKS".

NEW CONCRETE FOR THE DECK AND PAVING BLOCKS AT JOINT REPAIR AREA IS PAID FOR AS "CONCRETE MASONRY OVERLAY DECKS".

NEW CONCRETE FOR 42SS PARAPET SHAPE, INCLUDING WITHIN THE JOINT REPAIR LIMITS, IS PAID FOR AS "CONCRETE MASONRY BRIDGES".

BAR STEEL REINFORCEMENT SHALL BE EMBEDDED 2" CLEAR UNLESS OTHERWISE SHOWN OR NOTED.

ALL REINFORCING BARS ARE ENGLISH. THE FIRST OR FIRST TWO DIGITS OF THE BAR MARK SIGNIFIES THE BAR SIZE. BAR DIMENSIONS ARE OUT TO OUT OF BAR.

UTILIZE EXISTING BAR STEEL REINFORCEMENT WHERE SHOWN AND EXTEND 24 BAR DIAMETERS INTO NEW WORK, UNLESS SPECIFIED OTHERWISE.

UNDER THE BID ITEM "ADHESIVE ANCHORS NO.5 BAR", ANCHORED REINFORCING STEEL SHALL BE PAID FOR SEPARATELY AS PROVIDED IN SECTION 505 OF THE STANDARD SPECIFICATIONS FOR BAR STEEL REINFORCEMENT.

BEVEL EDGES OF EXPOSED CONCRETE 3/4" MIN. OR MATCH EXISTING BEVELS UNLESS NOTED OTHERWISE.

PROFILE GRADE LINE SHALL BE DETERMINED IN THE FIELD BASED ON A MINIMUM OVERLAY THICKNESS OF 1/2" PLACED ABOVE THE DECK SURFACE AFTER SURFACE PREPARATION. THE EXPECTED AVERAGE OVERLAY THICKNESS IS 2". IF EXPECTED AVERAGE OVERLAY THICKNESS IS EXCEEDED BY MORE THAN 1/2", CONTACT THE STRUCTURES DESIGN SECTION.

EXPANSION JOINT ASSEMBLY, INCLUDING ANCHOR STUDS AND HARDWARE, SHALL BE PAID FOR IN THE LUMP SUM PRICE BID AS "EXPANSION DEVICE B-64-23".

REMOVE DESIGNATED MOVEABLE BEARING ASSEMBLIES AT THE NORTH ABUTMENT UNDER THE BID ITEM "REMOVING BEARINGS B-64-23" AND REPLACE WITH LAMINATED ELASTOMERIC BEARINGS.

CLEAN AND PAINT EXISTING FIXED BEARINGS AT THE SOUTH ABUTMENT AND EXISTING EXPANSION BEARINGS AT THE PIERS.

CLEAN AND PAINT ALL EXPOSED STEEL SUPERSTRUCTURE SURFACES UNDERNEATH THE BRIDGE. THE SURFACES INCLUDE GIRDERS, DIAPHRAGMS, CROSS FRAMES, CONNECTIONS, FIXED BEARINGS, ETC. ALL CLEANING AND PAINTING TO BE PAID FOR AS "STRUCTURE REPAINTING RECYCLED ABRASIVE B-64-23". PAINT APPLICATIONS ON THE BEARINGS SHOULD BE BRUSHED ON.

EXISTING STEEL SUPERSTRUCTURE AND BEARINGS SHALL BE PAINTED BLUE, AMS STANDARD COLOR NUMBER 25240.

THE UTILITY INFORMATION SHOWN ON THESE DRAWINGS CONCERNING TYPE AND LOCATION IS NOT GUARANTEED TO BE ACCURATE OR ALL-INCLUSIVE. THE CONTRACTOR IS RESPONSIBLE FOR MAKING HIS OWN DETERMINATION AS TO TYPE AND LOCATION OF UTILITIES AS MAY BE NECESSARY TO AVOID DAMAGE.

VERIFY DRAIN DOWNSPOUTS ARE NOT CLOGGED ONCE CONSTRUCTION COMPLETED. CLOGGED DOWNSPOUTS TO BE CLEANED OUT AND CONSIDERED INCIDENTAL TO "CONCRETE MASONRY OVERLAY".

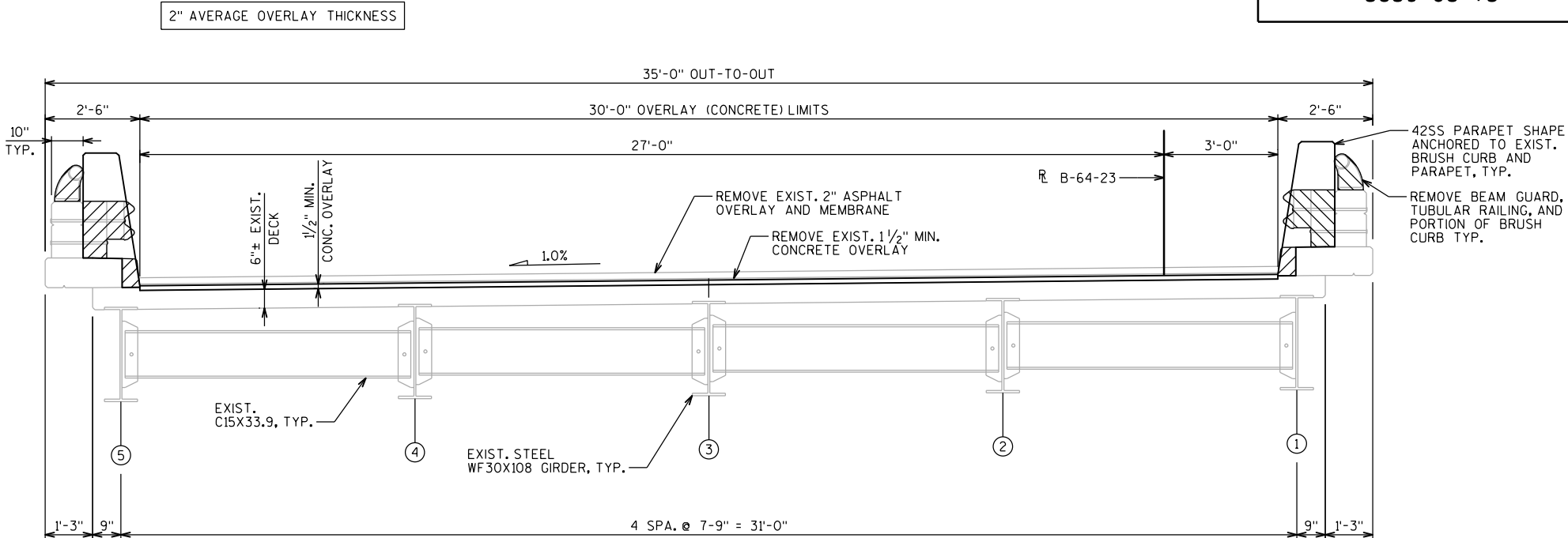
EXISTING FLOOR DRAINS TO REMAIN IN PLACE. REMOVE TOP OF DECK IN DRAIN AREA AS DIRECTED BY THE FIELD ENGINEER TO ALLOW PLACING AND SLOPING OF 1 1/2" CONCRETE OVERLAY.

THE CONTRACTOR SHALL SUPPLY A NEW NAME PLATE IN ACCORDANCE WITH SECTION 502.3.11 OF THE STANDARD SPECIFICATIONS AND THE STANDARD DETAIL DRAWINGS. NAME PLATE TO SHOW ORIGINAL CONSTRUCTION YEAR OF 1965 AND SHALL BE CONSIDERED INCIDENTAL TO "CONCRETE MASONRY BRIDGES".

<PROPOSED ROADWAY STAGING CALLS FOR BRIDGE CLOSURE DURING OVERLAY AND ON-DECK WORK.>

STATE PROJECT NUMBER

3839-03-73



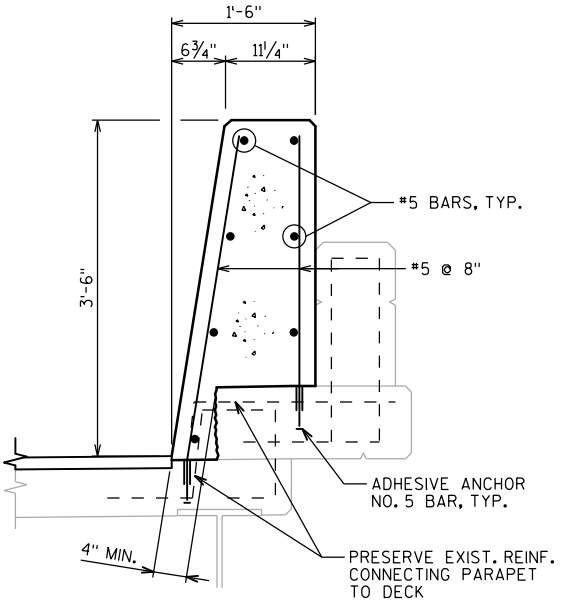
TYPICAL SECTION

(LOOKING NORTH)

TOTAL ESTIMATED QUANTITIES

ITEM NO.	BID ITEM	UNIT	TOTAL
203.0210.S.XX	ABATEMENT OF ASBESTOS CONTAINING MATERIAL B-64-23	LS	
204.0175	REMOVING CONCRETE SLOPE PAVING	SY	
502.0100	CONCRETE MASONRY BRIDGES	CY	
502.3100.XX	EXPANSION DEVICE B-64-23	LS	
502.3200	PROTECTIVE SURFACE TREATMENT	SY	
502.3210	PIGMENTED SURFACE SEALER	SY	
502.42XX	ADHESIVE ANCHORS NO. X BAR	EACH	
505.0600	BAR STEEL REINFORCEMENT HS COATED STRUCTURES	LB	
506.2610	BEARING PADS ELASTOMERIC LAMINATED	EACH	
506.7050.S.XX	REMOVING BEARINGS B-64-23	EACH	
509.0301	PREPARATION DECKS TYPE 1	SY	
509.0302	PREPARATION DECKS TYPE 2	SY	
509.0505.S	CLEANING DECKS TO REAPPLY CONCRETE MASONRY OVERLAY	SY	
509.1000	JOINT REPAIR	SY	
509.1500	CONCRETE SURFACE REPAIR	SF	
509.2000	FULL-DEPTH DECK REPAIR	SY	
509.2500	CONCRETE MASONRY OVERLAY DECKS	CY	
509.9005.S.XX	REMOVING CONCRETE MASONRY DECK OVERLAY B-64-23	SY	
509.9010.S.XX	REMOVING ASPHALTIC CONCRETE DECK OVERLAY B-64-23	SY	
514.2625	DOWNSPOUT 6-INCH	LF	
517.1800.S.XX	STRUCTURE REPAINTING RECYCLED ABRASIVE B-64-23	LS	
517.4500.S.XX	NEGATIVE PRESSURE CONTAINMENT AND COLLECTION OF WASTE MATERIALS B-64-23	LS	
517.6001.S	PORTABLE DECONTAMINATION FACILITY	EACH	
604.0500	SLOPE PAVING CRUSHED AGGREGATE	SY	
606.0200	RIPRAP MEDIUM	CY	
614.0150	ANCHOR ASSEMBLIES FOR STEEL PLATE BEAM GUARD	EACH	
645.0120	GEOTEXTILE TYPE HR	SY	
SPV.0060.XX	EMBEDDED GALVANIC ANODES	EACH	
SPV.0060.XX	CLEAN DECK DRAINS	EACH	
SPV.0180.XX	CLEAN ABUTMENT SEATS	SY	
	NON-BID ITEMS		
	NAME PLATE	EACH	
	PREFORMED JOINT FILLER	SIZE	

ALL ITEMS ARE CATEGORY XXXX



SECTION THRU PARAPET
RETROFIT ON BRIDGE

NO.	DATE	REVISION	BY
STATE OF WISCONSIN DEPARTMENT OF TRANSPORTATION			
STRUCTURE B-64-23			
DRAWN BY		HDA	PLANS CKD. PJC
TYPICAL SECTION, GENERAL NOTES & QUANTITIES			SHEET 2 OF 2

PRELIMINARY PLANS