

## TRAFFIC DATA

STH 47

ADT. = 10,200 (2020)

ADT = 12,900 (2040)

RDS = 25 MPH

## DESIGN DATA

LIVE LOAD:

DESIGN LOADING: HS-20

INVENTORY RATING = HSXY

OPERATIONAL RATING = HSYZ

WISCONSIN STANDARD PERMIT VEHICLE (WIS-SPV) = XYZ KIPS

## GENERAL NOTES

DRAWINGS SHALL NOT BE SCALED.

DIMENSIONS SHOWN ARE BASED ON THE ORIGINAL STRUCTURE PLANS.

THE EXISTING STRUCTURE B-58-60 IS A TWO SPAN PRECAST BOX GIRDER STRUCTURE WITH AN OVERALL WIDTH OF 60'-0 $\frac{7}{8}$ " AND AN OVERALL LENGTH OF 95'-9 $\frac{5}{8}$ ".

\* END OF DECK DIMENSION IS MEASURED FROM ROADWAY PAVING NOTCH TO ROADWAY PAVING NOTCH. (SEE EXISTING PLANS FOR DETAILS).

CLEAN END OF DECK JOINTS OF DEBRIS PRIOR TO APPLICATION OF OVERLAY. WORK IS INCIDENTAL TO BID ITEM "SHEET MEMBRANE WATERPROOFING".

THE PLAN QUANTITY FOR THE BID ITEM "HMA PAVEMENT 4 LT 58-28 S" IS BASED ON THE AVERAGE OVERLAY THICKNESS OF 2".

PROFILE GRADE LINE SHALL BE DETERMINED IN THE FIELD BASED ON A MINIMUM OVERLAY THICKNESS OF 2" PLACED ABOVE THE DECK SURFACE. EXPECTED AVERAGE OVERLAY THICKNESS IS 2". IF EXPECTED AVERAGE OVERLAY THICKNESS IS EXCEEDED BY MORE THAN  $\frac{1}{2}$ " CONTACT THE STRUCTURES DESIGN SECTION. SEE ROADWAY PLANS FOR ROADWAY PROFILE ADJUSTMENT INFORMATION.

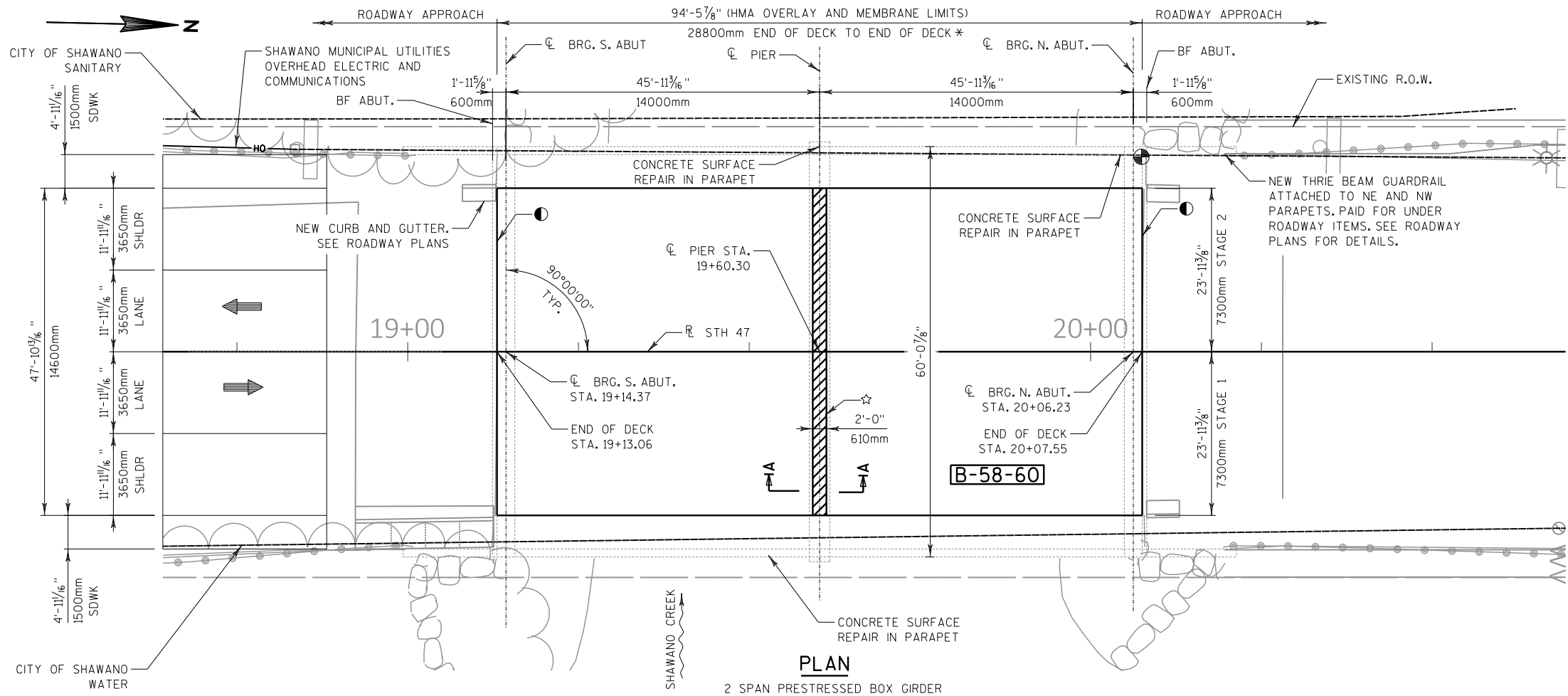
A 16 FOOT (MIN.) TRAFFIC LANE WILL BE MAINTAINED DURING OVERLAY OPERATIONS. SEE ROADWAY PLANS FOR TRAFFIC CONTROL DETAILS.

● CLEAN OUT JOINT BETWEEN BRIDGE AND ROADWAY APPROACH PAVEMENT. REPAIR SPALLS UNDER BID ITEM "CONCRETE SURFACE REPAIR" AT THE DIRECTION OF THE FIELD ENGINEER. COMPLETE REPAIRS PER STANDARD SPECIFICATION. REMOVE SIGNIFICANT SPALLS TO BELOW EXISTING STEEL AS DIRECTED BY THE FIELD ENGINEER. FILL JOINT WITH CONCRETE JOINT SEALER UNDER BID ITEM "CONCRETE JOINT SEALING".

☆ SAWCUT AND REMOVE EXISTING 2" UNREINFORCED CONCRETE OVERLAY OVER PIERS TO TOP OF GIRDER. REPLACE WITH CONCRETE UNDER BID ITEM "CONCRETE SURFACE REPAIR". CURE FOR A MINIMUM OF 7 DAYS PRIOR TO PLACEMENT OF SHEET MEMBRANE WATERPROOFING UNLESS OTHERWISE APPROVED BY THE SITE ENGINEER.

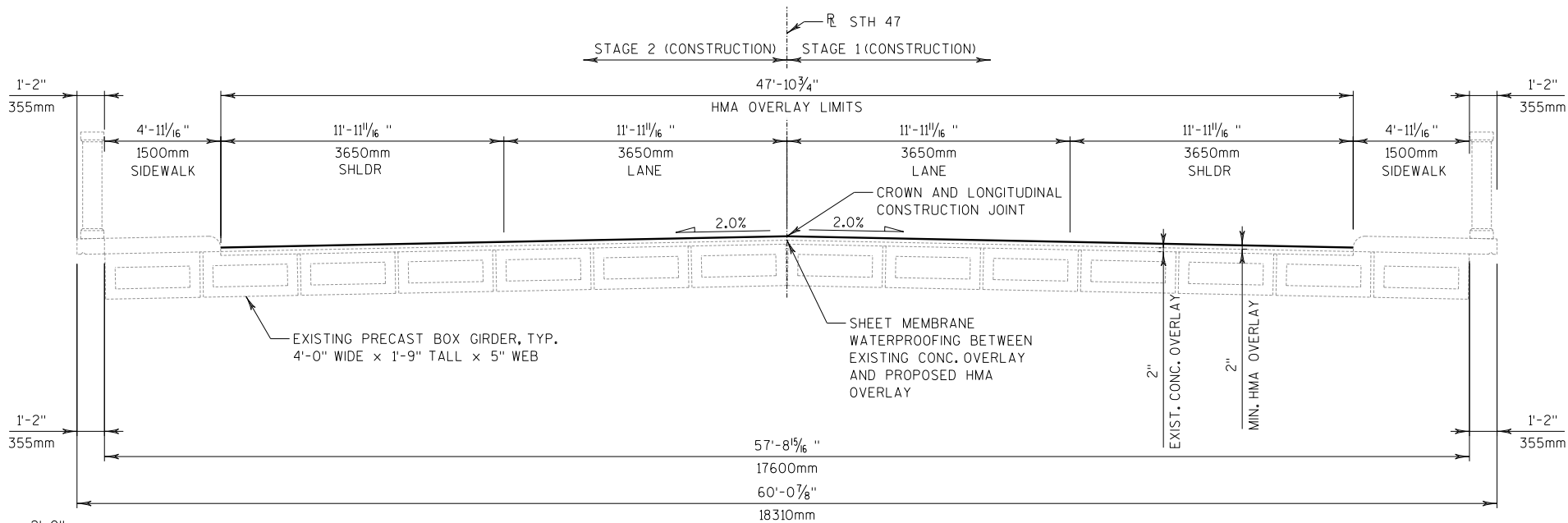
## PRELIMINARY PLANS

NO.	DATE	REVISION	BY
<b>emcs</b> 1300 W. Canal Street, Suite 200 Milwaukee, WI 53233 414.347.1607 Fax 414.347.1347			
STATE OF WISCONSIN DEPARTMENT OF TRANSPORTATION			
ACCEPTED		CHIEF STRUCTURES DESIGN ENGINEER	DATE
<b>STRUCTURE B-58-60</b>			
STH 47 OVER SHAWANO CREEK			
COUNTY	SHAWANO	CITY	SHAWANO
DESIGN SPEC.	REHABILITATION	N/A	
DESIGNED BY	MDR	DESIGN CK'D.	SMK
DRAWN BY	MDR	PLANS CK'D.	SMK
HMA OVERLAY			SHEET 1 OF 1



## PLAN

2 SPAN PRESTRESSED BOX GIRDER



## CROSS SECTION THRU ROADWAY

(LOOKING NORTH)

## TOTAL ESTIMATED QUANTITIES

ITEM NO.	BID ITEM	UNIT	TOTAL
455.0605	TACK COAT	GAL	31
460.5224	HMA PAVEMENT 4 LT 58-28 S	TON	57
509.1500	CONCRETE SURFACE REPAIR	SF	120
516.0600.S	SHEET MEMBRANE WATERPROOFING	SY	515
SPV.0090	CONCRETE JOINT SEALING	LF	96

## BENCH MARK

NO.	STATION	OFFSET	DESCRIPTION	ELEV.
600	20+07.42	28.53' LEFT	ALUM. CAP ON NW WINGWALL	812.47

## STRUCTURE DESIGN CONTACTS

BRIDGE OFFICE: WILLIAM DREHER (608) 266-8489  
CONSULTANT: MIKE RADTKE (414) 347-1607

## CROSS SECTION A-A

(LOOKING WEST)

