

**DESIGN DATA****LIVE LOAD:**

DESIGN LOADING: HS20

INVENTORY RATING FACTOR:

OPERATING RATING FACTOR:

WISCONSIN STANDARD PERMIT VEHICLE (WIS-SPV): KIPS

**TRAFFIC DATA:**

A.D.T. (2021) = 1,200

A.D.T. (2041) = 1,300

R.D.S. = 55 MPH

**MATERIAL PROPERTIES:**CONCRETE MASONRY - DECK REPAIR —  $f'_c = 4,000$  P.S.I.CONCRETE MASONRY BRIDGES —  $f'_c = 4,000$  P.S.I.**LIST OF DRAWINGS**


1. OVERLAY PLAN

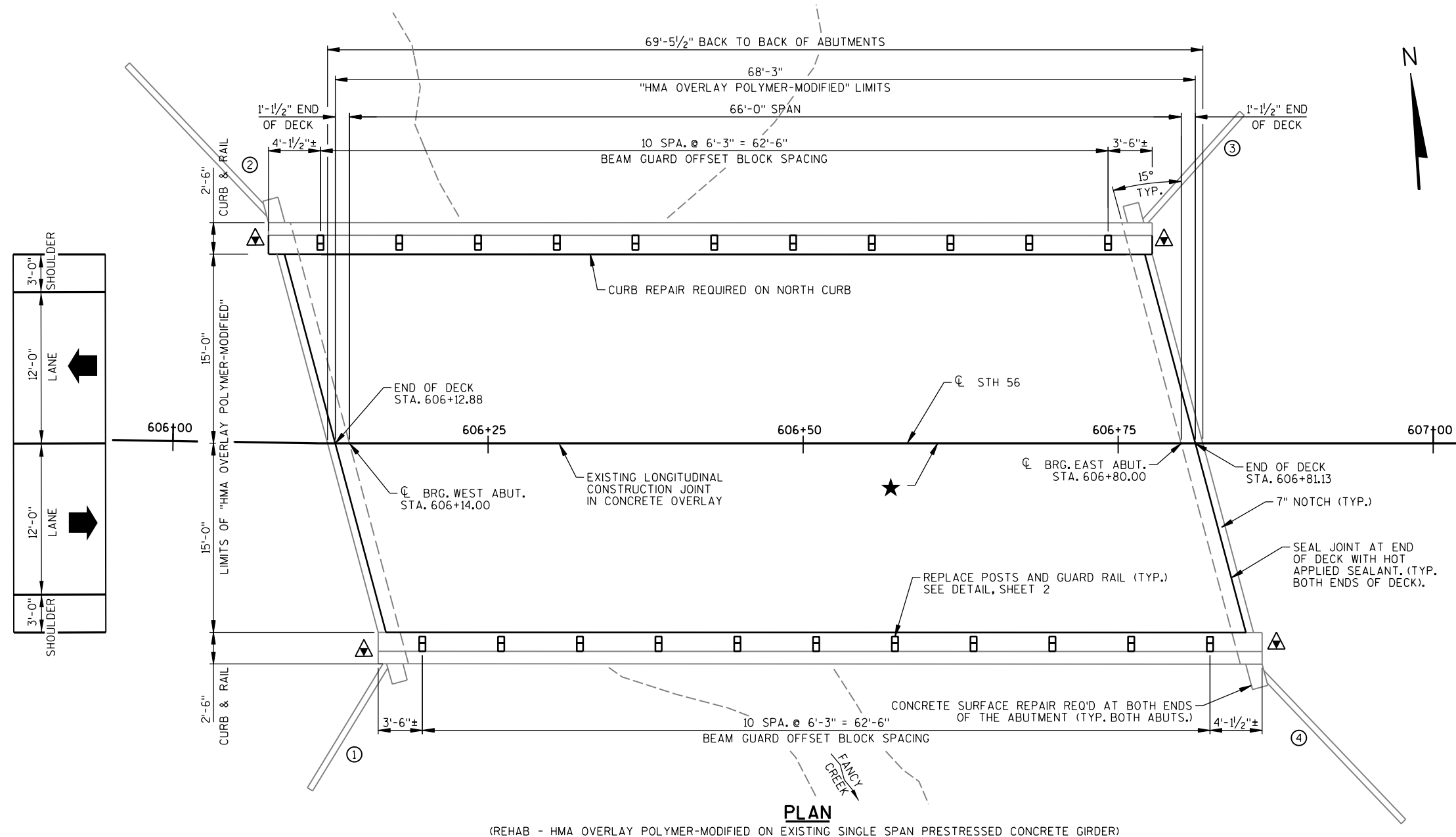
2. CROSS SECTION, QUANTITIES, NOTES &amp; DETAILS

**LEGEND**★ — OPTIONAL LONGITUDINAL  
CONSTRUCTION JOINT IN OVERLAY

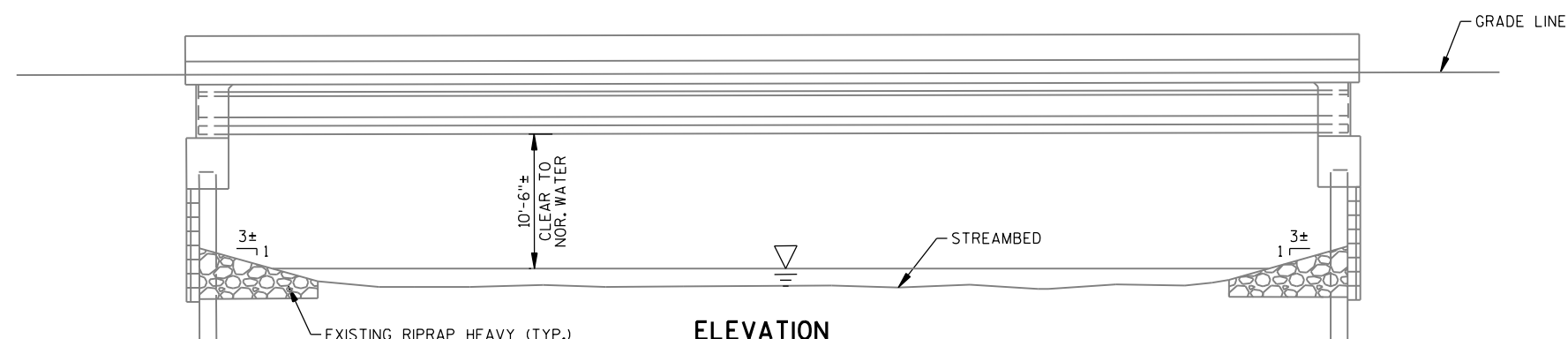
○ — INDICATES WING NUMBER.

▲ — INDICATES LOCATION OF PROVISION  
FOR THRIE BEAMGUARD ATTACHMENTCONSULTANT DESIGN CONTACT:  
JOSHUA SWENO  
(608) 355-8852BRIDGE OFFICE CONTACT:  
WILLIAM DREHER  
(608) 266-8489

NO.	DATE	REVISION	BY
<div> <b>MSA</b></div> <div>ENGINEERING   ARCHITECTURE   SURVEYING FUNDING   PLANNING   ENVIRONMENTAL 1230 SOUTH BLVD., BARABOO WI 53913 (608) 356-2771      <a href="http://www.msa-ps.com">www.msa-ps.com</a> <small>© MSA Professional Services, Inc.</small></div>			
STATE OF WISCONSIN DEPARTMENT OF TRANSPORTATION			
ACCEPTED _____		CHIEF STRUCTURES DESIGN ENGINEER	DATE _____
STRUCTURE      B-52-35			
STH 56 OVER FANCY CREEK			
COUNTY	RICHLAND		TOWN/CITY/VILLAGE MARSHALL
DESIGN SPEC. REHABILITATION - N/A			
DESIGNED BY	XXX	DESIGN CK'D. XXX	DRAWN BY CAR
			PLANS CK'D. JRS
OVERLAY PLAN			SHEET 1 OF

**PLAN**

(REHAB - HMA OVERLAY POLYMER-MODIFIED ON EXISTING SINGLE SPAN PRESTRESSED CONCRETE GIRDER)

**ELEVATION**  
(LOOKING NORTH)

NOTES

DRAWINGS SHALL NOT BE SCALED.

SEE ROAD PLANS FOR TRAFFIC CONTROL.

DIMENSIONS SHOWN ARE BASED ON THE ORIGINAL STRUCTURE PLANS.

THIS PROJECT WILL REHABILITATE THE EXISTING STRUCTURE, B-52-35, A SINGLE SPAN, 68.3' LONG, 36" PRESTRESSED CONCRETE GIRDER BRIDGE SET ON STEEL PILE AND TIMBER BACKED ABUTMENTS.

IMPROVEMENTS INCLUDE AN HMA OVERLAY POLYMER-MODIFIED OF THE BRIDGE DECK, CONCRETE DECK REPAIR, CURB REPAIR, AND REPLACEMENT OF THE WOOD POSTS AND STEEL GUARD RAIL AS SHOWN IN THE PLANS.

AREAS OF "PREPARATION DECKS TYPE 1" SHALL BE DEFINED BY A SAW CUT.

PREPARATION DECKS TYPE 1, PREPARATION DECKS TYPE 2, AND FULL-DEPTH REPAIR AREAS ARE BASED ON THE PLANS AND AS DETERMINED BY THE ENGINEER. DECK PREPARATION AND FULL-DEPTH DECK REPAIRS SHALL BE FILLED WITH "CONCRETE MASONRY DECK REPAIR".

ANY EXCAVATION REQUIRED TO COMPLETE THE OVERLAY AT THE ABUTMENTS TO BE CONSIDERED INCIDENTAL TO THE BID ITEM "HMA OVERLAY POLYMER-MODIFIED".

PROFILE GRADE LINE SHALL BE DETERMINED IN THE FIELD BASED ON A MINIMUM OVERLAY THICKNESS OF 2" PLACED ABOVE THE DECK SURFACE. EXPECTED AVERAGE OVERLAY THICKNESS IS 3". IF EXPECTED AVERAGE OVERLAY THICKNESS IS EXCEEDED BY MORE THAN 1/2", CONTACT THE STRUCTURES DESIGN SECTION.

THE PLAN QUANTITY FOR THE BID ITEM "HMA OVERLAY POLYMER-MODIFIED" IS BASED ON THE AVERAGE OVERLAY THICKNESS.

"CONCRETE MASONRY DECK REPAIR" REQUIRES A MINIMUM CURE TIME OF 7 DAYS BEFORE "HMA OVERLAY POLYMER-MODIFIED" CAN BE APPLIED.

PROTECTIVE SURFACE TREATMENT SHALL BE APPLIED TO THE TOP AND INSIDE FACE OF THE NORTH CURB.

"CURB REPAIR" REQUIRED ON THE NORTH CURB, AND AS DIRECTED BY THE ENGINEER.

"CONCRETE SURFACE REPAIR" REQUIRED AT THE ENDS OF BOTH ABUTMENTS, AND AS DIRECTED BY THE ENGINEER.

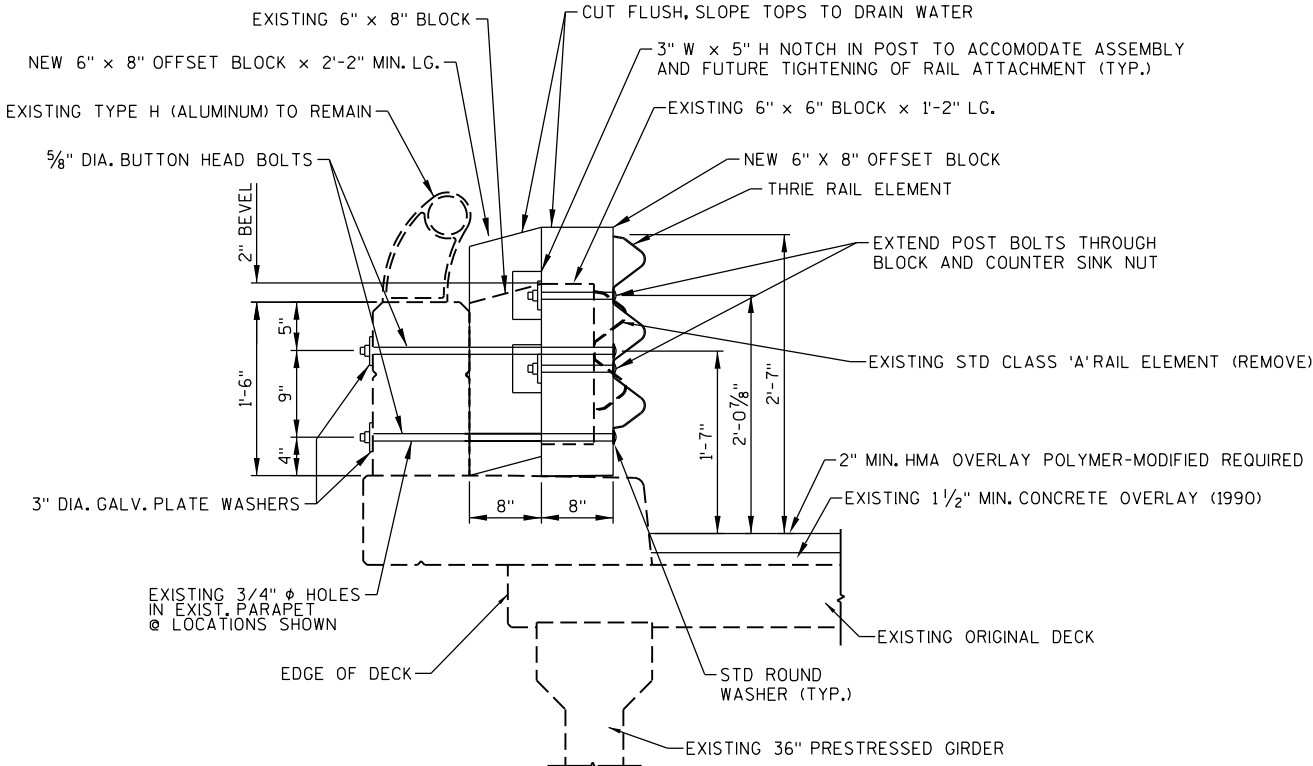
SEAL JOINTS BETWEEN BRIDGE DECK AND APPROACH PAVEMENT WITH HOT-APPLIED SEALANT.

TOTAL ESTIMATED QUANTITIES

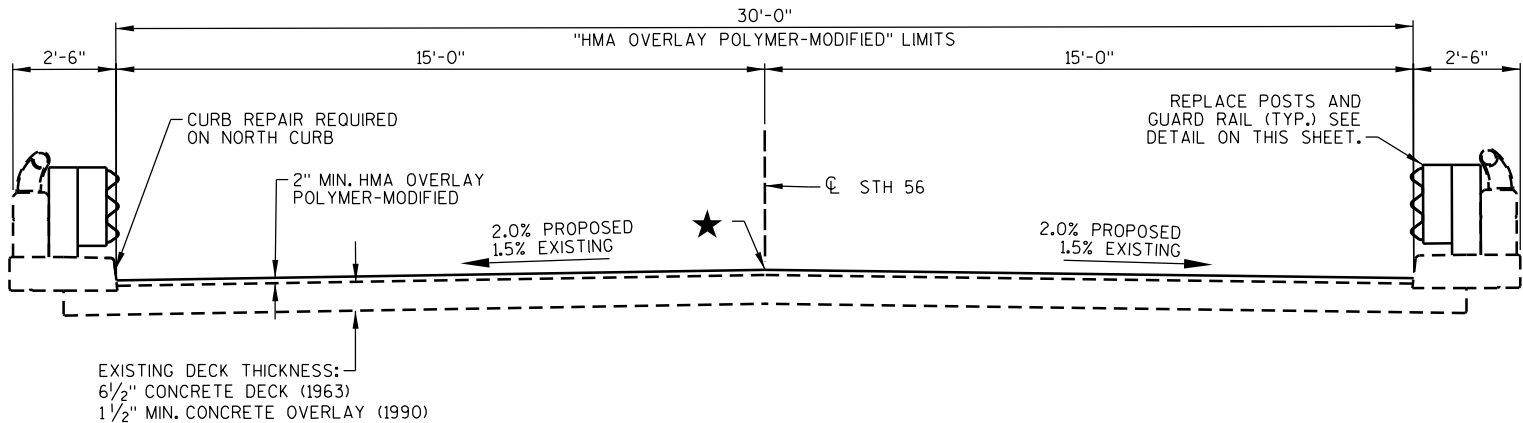
ITEM NUMBER	BID ITEM	UNIT	TOTAL
492.2010.S	SEALING CRACKS AND JOINTS WITH HOT-APPLIED SEALANT	GAL	
502.3200	PROTECTIVE SURFACE TREATMENT	SY	
* 509.0301	PREPARATION DECKS TYPE 1	SY	
* 509.0302	PREPARATION DECKS TYPE 2	SY	
509.0310.S	SAWING PAVEMENT DECK PREPARATION AREAS	LF	
* 509.1200	CURB REPAIR	LF	
* 509.1500	CONCRETE SURFACE REPAIR	SF	
* 509.2000	FULL-DEPTH DECK REPAIR	SY	
509.2100.S	CONCRETE MASONRY DECK REPAIR	CY	
509.3500.S	HMA OVERLAY POLYMER-MODIFIED	TON	
SPV.0090.01	REMOVE AND REPLACE STEEL RAILING AND POSTS B-52-35	LF	

\* - THE CONTRACTOR SHALL COORDINATE THE FIELD IDENTIFICATION OF ALL CONCRETE DECK REPAIR, CONCRETE SURFACE REPAIR AND CURB REPAIR LOCATIONS WITH THE ENGINEER.

OFFSET BLOCK DETAIL



CROSS SECTION THRU BRIDGE  
(LOOKING EAST)



★ — OPTIONAL LONGITUDINAL  
CONSTRUCTION JOINT IN OVERLAY

NO.	DATE	REVISION	BY
STATE OF WISCONSIN DEPARTMENT OF TRANSPORTATION			
STRUCTURE		B-52-35	
DRAWN BY		CAR	PLANS CK'D. JRS
CROSS SECTION, QUANTITIES, NOTES & DETAILS		SHEET 2 OF 2	