


MATERIAL PROPERTIES:
CONCRETE MASONRY - DECK PATCHING.....f'c = 4,000 psi

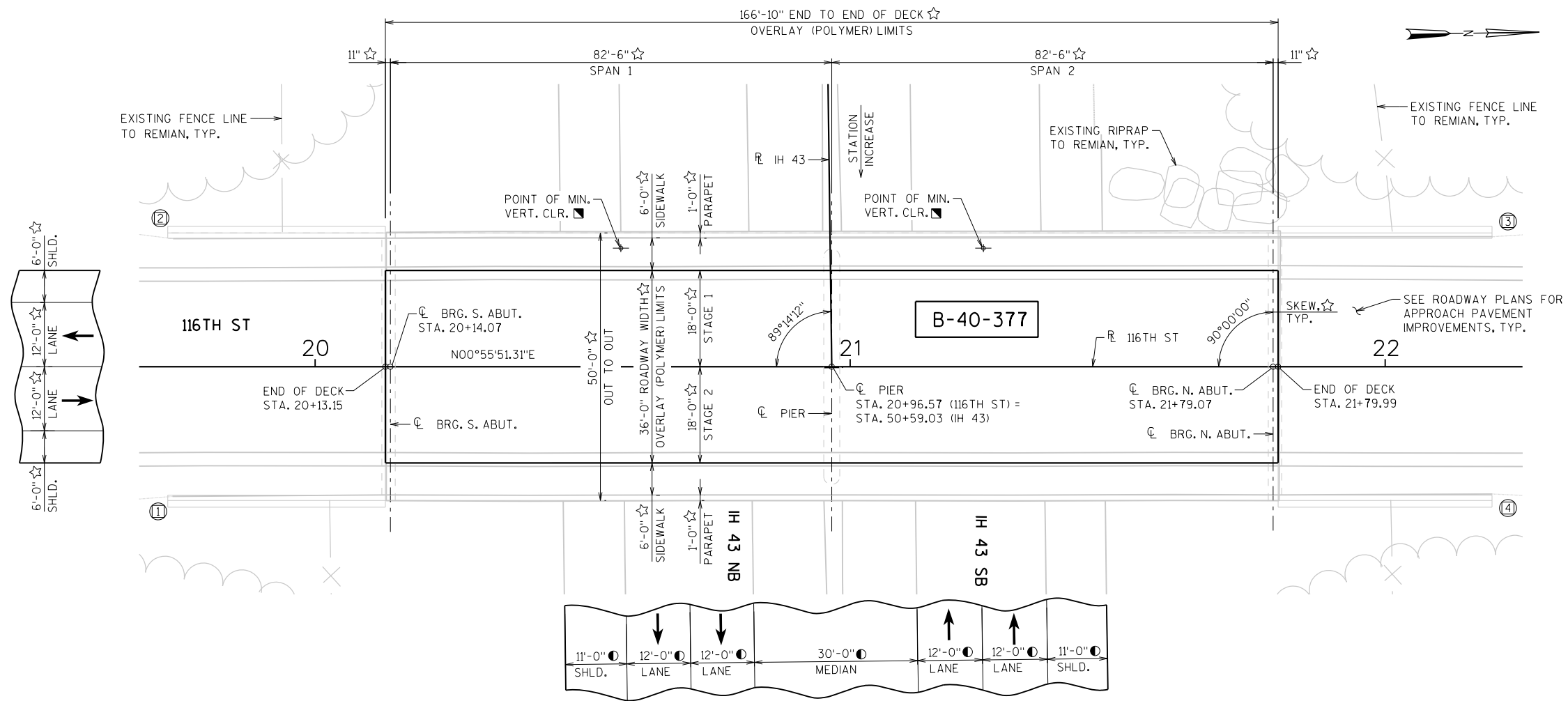
1. GENERAL PLAN & ELEVATION
2. TYPICAL SECTION, GENERAL NOTES & QUANTITIES

- ➔ DIRECTION OF TRAFFIC
- ☆ DIMENSIONS TAKEN FROM ORIGINAL STRUCTURE PLANS
- DIMENSIONS TAKEN FROM EXISTING SURVEY
- ☑ DIMENSIONS AND LOCATIONS TAKEN FROM THE INSPECTION REPORT DATED APRIL 17, 2018
- ⓧ WINGWALL NUMBER

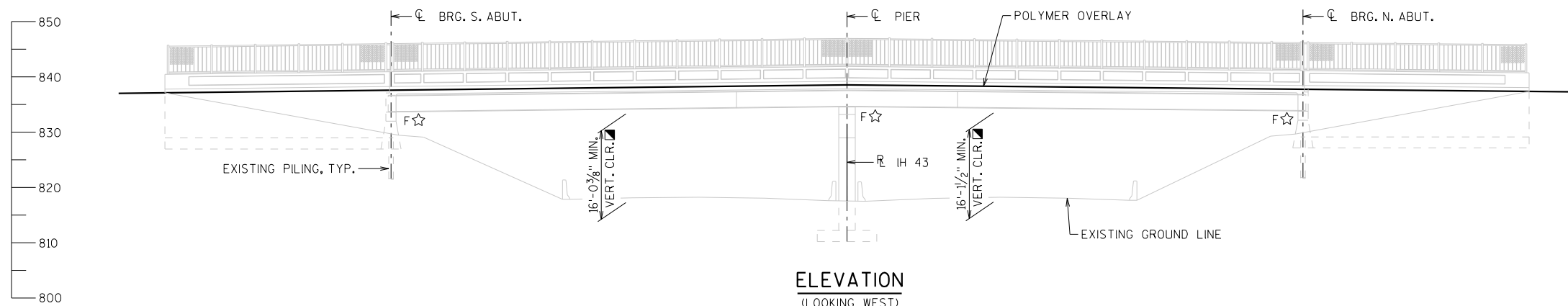
<u>IH 43</u>	<u>116TH ST</u>
AADT = 43,100 (2014)	AADT = 1,800 (2011)
AADT = 46,500 (2022)	AADT = 1,900 (2022)
AADT = 50,800 (2032)	AADT = 2,000 (2032)
AADT = 55,000 (2042)	AADT = 2,100 (2042)
RDS = 60 MPH	RDS = 30 MPH

BRIDGE OFFICE:
WILLIAM DREHER (608) 266-8489
CONSULTANT:
MOHAMMED ZAGLOUL (414) 751-7200

NO.	DATE	REVISION	BY				
<div>ORIGINAL PLANS PREPARED BY</div> <div> KAPUR & ASSOCIATES CONSULTING ENGINEERS 414.751.7200</div>							
STATE OF WISCONSIN DEPARTMENT OF TRANSPORTATION							
ACCEPTED _____ CHIEF STRUCTURES DESIGN ENGINEER _____ DATE _____							
STRUCTURE B-40-377							
116TH STREET OVER IH 43							
COUNTY MILWAUKEE		CITY GREENFIELD					
DESIGN SPEC. REHABILITATION N/A							
DESIGNED BY	AJA	DESIGN CK'D.	MHZ	DRAWN BY	AJA	PLANS CK'D.	MHZ
GENERAL PLAN & ELEVATION					SHEET 1 OF 2		

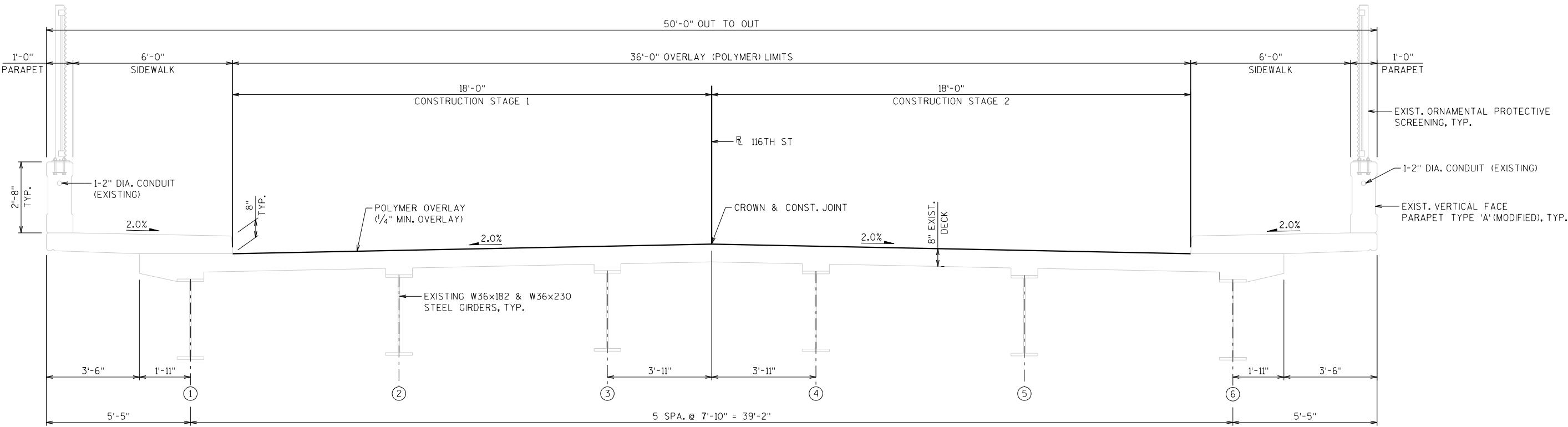


PLAN
(2-SPAN STEEL GIRDER)
(POLYMER OVERLAY)



ELEVATION
(LOOKING WEST)

PRELIMINARY PLANS



TYPICAL SECTION

(LOOKING NORTH)
(DIMENSIONS & CROSS SLOPES TAKEN FROM EXISTING STRUCTURE PLANS)

GENERAL NOTES

- DRAWINGS SHALL NOT BE SCALED.
- DIMENSIONS SHOWN ARE BASED ON THE ORIGINAL STRUCTURE PLANS.
- ALL CONCRETE REMOVAL NOT COVERED WITH A POLYMER OVERLAY SHALL BE DEFINED BY A 1 INCH DEEP SAW CUT.
- AREAS OF "PREPARATION DECKS TYPE 1" SHALL BE DEFINED BY A SAW CUT.
- ALL DIMENSIONS ARE IN FEET AND INCHES UNLESS OTHERWISE NOTED.
- ALL STATIONS AND ELEVATIONS ARE IN FEET. ELEVATIONS REFERENCED TO THE NORTH AMERICAN VERTICAL DATUM NAVD88 (2012).
- THE UTILITY INFORMATION SHOWN ON THESE DRAWINGS CONCERNING TYPE AND LOCATION OF UNDERGROUND UTILITIES IS NOT GUARANTEED TO BE ACCURATE OR ALL-INCLUSIVE. THE CONTRACTOR IS RESPONSIBLE FOR MAKING HIS OWN DETERMINATION AS TO TYPE AND LOCATION OF UNDERGROUND UTILITIES AS MAY BE NECESSARY TO AVOID DAMAGE.
- "PREPARATION DECKS TYPE 1", "PREPARATION DECKS TYPE 2" & "FULL-DEPTH DECK REPAIR" AREAS ARE BASED ON THE PLANS AND AS DETERMINED BY THE ENGINEER. DECK PREPARATION AND FULL DEPTH DECK REPAIRS SHALL BE FILLED WITH "CONCRETE MASONRY DECK REPAIR".
- DECK SURFACE PREPARATION IS INCLUDED IN THE BID ITEM "POLYMER OVERLAY".
- CLEAN AND FILL EXISTING LONGITUDINAL AND TRANSVERSE CRACKS WITH PENETRATING EPOXY AS DIRECTED BY THE FIELD ENGINEER.
- LOCATIONS OF THE FOLLOWING BID ITEMS SHALL BE DETERMINED IN THE FIELD BY THE PROJECT ENGINEER.
- QUANTITIES SHOWN FOR THESE BID ITEMS ARE APPROXIMATE.
- CRACK SEALING EPOXY
 - PREPARATION DECKS TYPE 1
 - PREPARATION DECKS TYPE 2
 - FULL DEPTH DECK REPAIR

TOTAL ESTIMATED QUANTITIES

ITEM NO.	BID ITEMS	UNIT	SOUTH ABUTMENT	PIER	NORTH ABUTMENT	SUPER.	TOTAL
203.0225.S.XXX	DEBRIS CONTAINMENT B-40-377	LS	-	-	-	-	-
502.0717.S	CRACK SEALING EPOXY	LF	-	-	-	-	-
509.0301	PREPARATION DECKS TYPE 1	SY	-	-	-	-	-
509.0302	PREPARATION DECKS TYPE 2	SY	-	-	-	-	-
509.0310.S	SAWING PAVEMENT DECK PREPARATION AREAS	LF	-	-	-	-	-
509.2000	FULL-DEPTH DECK REPAIR	SY	-	-	-	-	-
509.2100.S	CONCRETE MASONRY DECK REPAIR	CY	-	-	-	-	-
509.5100.S	POLYMER OVERLAY	SY	-	-	-	-	-

ALL ITEMS ARE CATEGORY XXXX

NO.	DATE	REVISION	BY
STATE OF WISCONSIN DEPARTMENT OF TRANSPORTATION			
STRUCTURE B-40-377			
		DRAWN BY	PLANS CK'D.
		AJA	MHZ
TYPICAL SECTION, GENERAL NOTES & QUANTITIES		SHEET 2 OF 2	

PRELIMINARY PLANS