

Design Project I.D. 1090-05-02 Rock Freeway IH 43 Rehabilitation
Bridge 116th Street Over IH 43
Conditions Near Bridge B-40-377



Bridge B-40-377 South Side (Looking North) on 116th Street



Bridge B-40-377 North Side (Looking South) on 116th Street

Design Project I.D. 1090-05-02 Rock Freeway IH 43 Rehabilitation
Bridge 116th Street Over IH 43
Conditions Near Bridge B-40-377



Bridge B-40-377 Looking East



Bridge B-40-377 Deck Cracks

Design Project I.D. 1090-05-02 Rock Freeway IH 43 Rehabilitation
Bridge 116th Street Over IH 43
Conditions Near Bridge B-40-377



Bridge B-40-377 Deck Cracks



Bridge B-40-377 Deck Cracks

Design Project I.D. 1090-05-02 Rock Freeway IH 43 Rehabilitation
Bridge 116th Street Over IH 43
Conditions Near Bridge B-40-377



Bridge B-40-377 Sidewalk Cracks



Bridge B-40-377 Parapet Cracks & Scaling

Design Project I.D. 1090-05-02 Rock Freeway IH 43 Rehabilitation
Bridge 116th Street Over IH 43
Conditions Near Bridge B-40-377

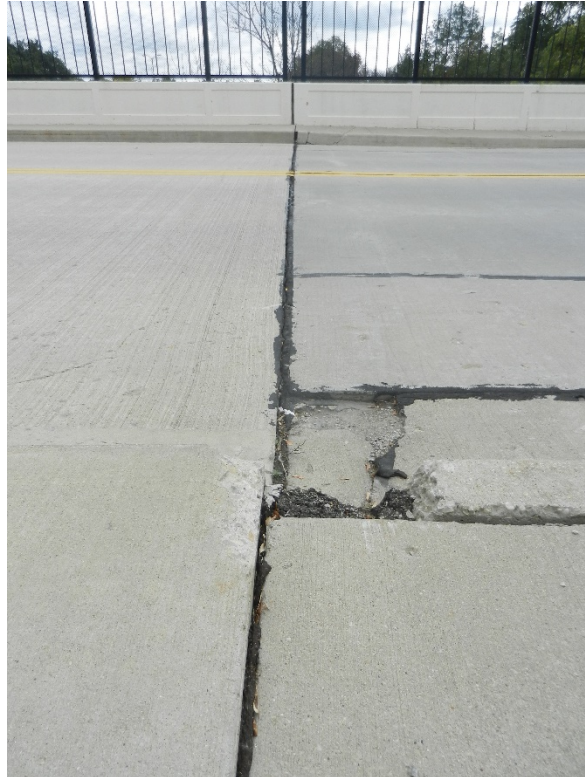


Bridge B-40-377 North Approach Joint



Bridge B-40-377 NE Corner Bridge/Approach Parapet Joint (Loose Caulk)

Design Project I.D. 1090-05-02 Rock Freeway IH 43 Rehabilitation
Bridge 116th Street Over IH 43
Conditions Near Bridge B-40-377



Bridge B-40-377 South Approach Joint



Bridge B-40-377 SW Corner Approach Curb

Design Project I.D. 1090-05-02 Rock Freeway IH 43 Rehabilitation
Bridge 116th Street Over IH 43
Conditions Near Bridge B-40-377



Bridge B-40-377 SW Corner Approach Sidewalk



Bridge B-40-377 SE Corner Approach Sidewalk