

DESIGN DATA

LIVE LOAD:  
DESIGN LOADING: HS-20  
INVENTORY RATING: HS-XX  
OPERATING RATING: HS-XX  
WISCONSIN STANDARD PERMIT VEHICLE (WIS-SPV) = XXX KIPS

MATERIAL PROPERTIES:  
CONCRETE MASONRY  
SUPERSTRUCTURE..... f'c = 4,000 psi  
OTHER..... f'c = 3,500 psi  
BAR STEEL REINFORCEMENT..... fy = 60,000 psi

TRAFFIC DATA

USH 8/141  
AADT = 4,100 (2018)  
AADT = 6,600 (2023)  
RDS = 60 MPH

CRRAIN LANE  
AADT = 200 (2018)  
RDS = XX MPH

LEGEND

- ⊗ WING NUMBER. WING NUMBERS MATCH EXISTING PLAN DESIGNATION.
- ▲ LOCATION OF "ANCHOR ASSEMBLIES FOR STEEL PLATE BEAM GUARD"
- \* VERTICAL CLEARANCE TAKEN FROM HSI SITE ON 10/23/18
- \*\* VERTICAL CLEARANCE AND WATER ELEVATIONS TAKEN FROM EXISTING AS-BUILT PLANS DATED 01/1974

LIST OF DRAWINGS

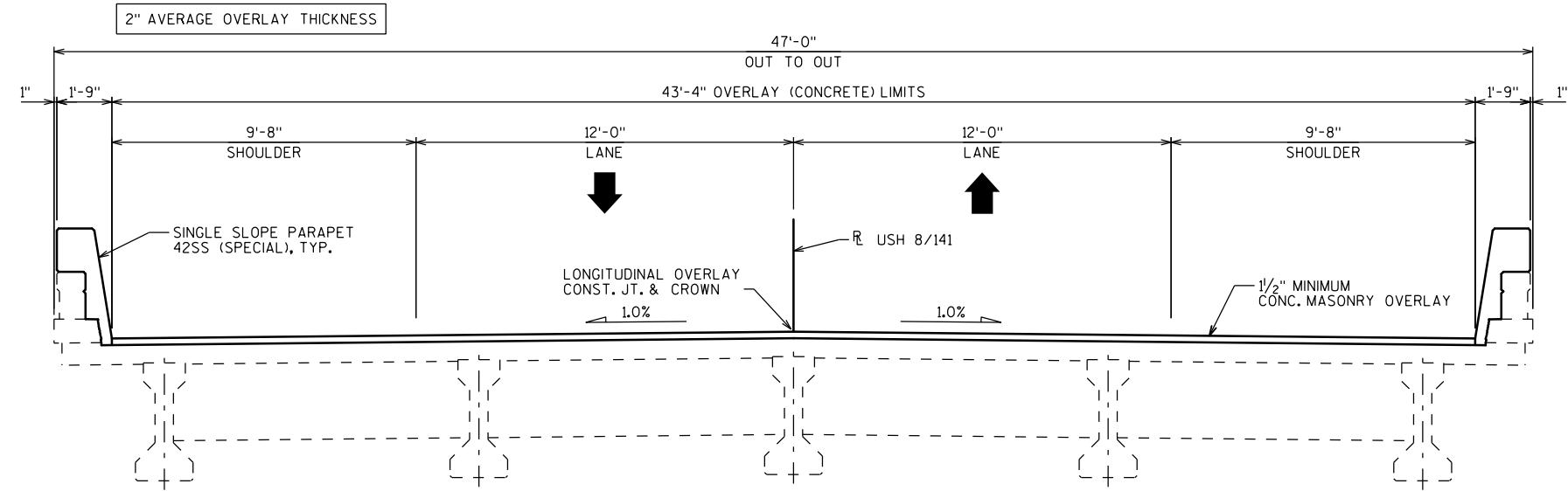
1. GENERAL PLAN & ELEVATION
2. TYPICAL SECTION & REMOVAL LIMITS
3. GENERAL NOTES & QUANTITIES
4. CONSTRUCTION STAGING

STRUCTURES DESIGN CONTACTS

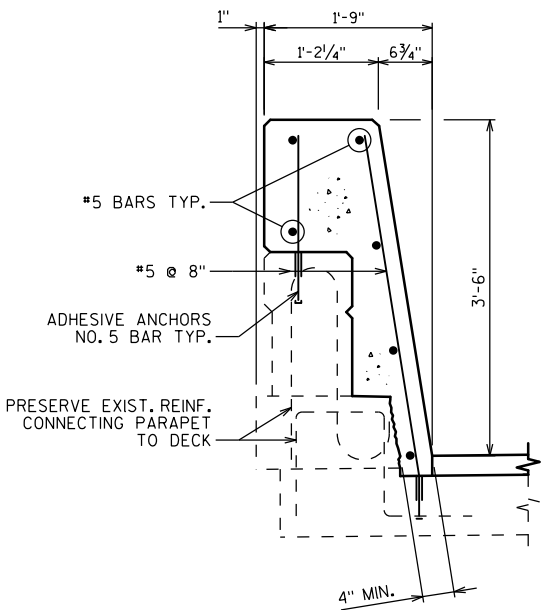
BRIDGE OFFICE:  
WILLIAM DREHER (608) 266-8489  
CONSULTANT:  
PAT CASHIN (414) 359-2300

NO.	DATE	REVISION	BY
ORIGINAL PLANS PREPARED BY			
<b>HNTB</b> 11414 W. PARK PLACE MILWAUKEE, WI 53224 (414) 359-2300			
STATE OF WISCONSIN DEPARTMENT OF TRANSPORTATION			
ACCEPTED _____ CHIEF STRUCTURES DESIGN ENGINEER DATE			
STRUCTURE B-38-15			
U.S.H. 8/141 OVER CRRAIN LANE/SOO LINE RR & PEME BON WON RIVER			
COUNTY	MARINETTE	TOWN/CITY/VILLAGE	PEMBINE
DESIGN SPEC. REHABILITATION N/A			
DESIGNED BY	MSS	DESIGN CK'D.	PJC
DRAWN BY	MPM	PLANS CK'D.	PJC
GENERAL PLAN & ELEVATION			SHEET 1 OF 4

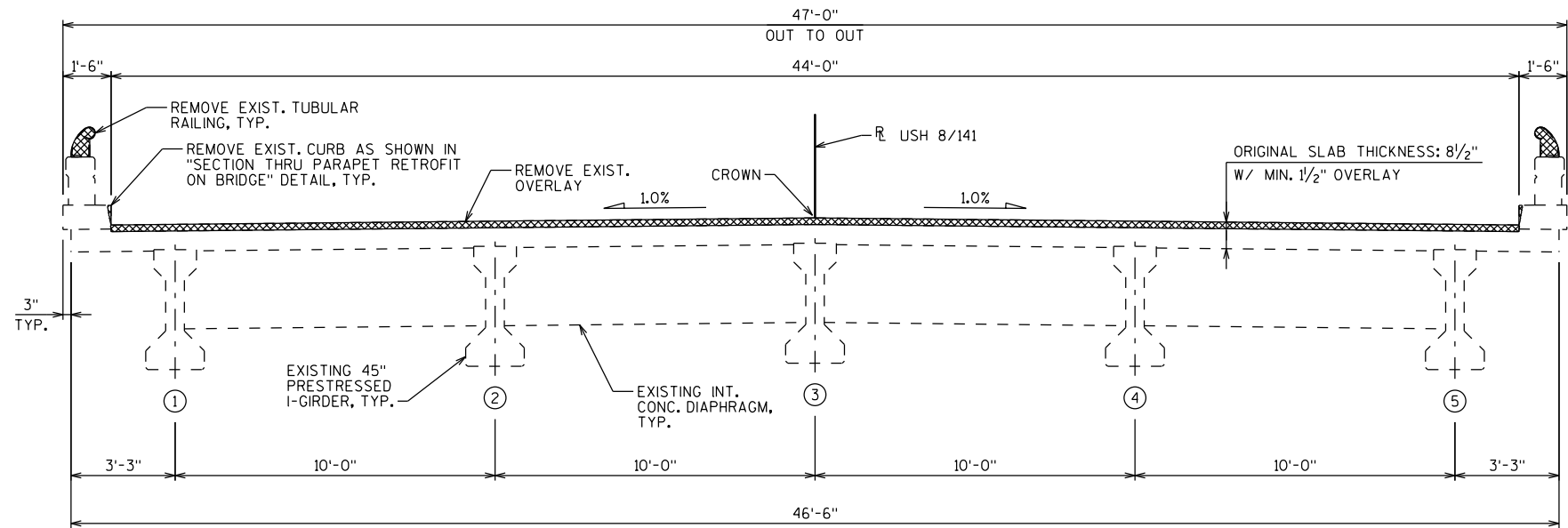
PRELIMINARY PLANS



PROPOSED TYPICAL SECTION  
LOOKING NORTH



SECTION THRU PARAPET  
RETROFIT ON BRIDGE



EXISTING TYPICAL SECTION  
LOOKING NORTH

PRELIMINARY PLANS

NO.	DATE	REVISION	BY
STATE OF WISCONSIN DEPARTMENT OF TRANSPORTATION			
STRUCTURE B-38-15			
DRAWN BY		MPM	PLANS CKD. PJC
TYPICAL SECTION & REMOVAL LIMITS			SHEET 2 OF 4

GENERAL NOTES

DRAWINGS SHALL NOT BE SCALED.

DIMENSIONS SHOWN ARE BASED ON THE ORIGINAL STRUCTURE PLANS.

ALL DIMENSIONS ARE IN FEET AND INCHES UNLESS OTHERWISE NOTED.

BAR STEEL REINFORCEMENT SHALL BE EMBEDDED 2" CLEAR UNLESS OTHERWISE SHOWN OR NOTED.

THE FIRST OR FIRST TWO DIGITS OF THE BAR MARK SIGNIFIES THE BAR SIZE.

UTILIZE EXISTING BAR STEEL REINFORCEMENT WHERE SHOWN AND EXTEND 24 BAR DIAMETERS INTO NEW WORK, UNLESS SPECIFIED OTHERWISE.

BEVEL ALL EXPOSED EDGES OF CONCRETE ¾" UNLESS OTHERWISE NOTED.

EXPANSION JOINT ASSEMBLY, INCLUDING ANCHOR STUDS AND HARDWARE, SHALL BE PAID FOR IN THE LUMP SUM PRICE BID AS "EXPANSION DEVICE B-38-15".

THE CONTRACTOR SHALL SUPPLY A NEW NAME PLATE IN ACCORDANCE WITH SECTION 502.3.11 OF THE STANDARD SPECIFICATIONS AND THE STANDARD DETAIL DRAWINGS. NAME PLATE TO SHOW ORIGINAL CONSTRUCTION YEAR 1970. NAME PLATE SHALL BE CONSIDERED INCIDENTAL TO "CONCRETE MASONRY BRIDGES".

ALL CONCRETE REMOVAL NOT COVERED WITH A CONCRETE OVERLAY SHALL BE DEFINED BY A 1" DEEP SAW CUT. THE CONTRACTOR SHALL EXERCISE CAUTION AS TO NOT DAMAGE THE EXISTING GIRDERS.

THE FOLLOWING SHALL BE INCLUDED IN THE BID PRICE FOR "CONCRETE MASONRY BRIDGES": REMOVAL OF THE TUBULAR RAILINGS AND TOES OF BRUSH CURBS; REMOVAL OF LOOSE CONCRETE ON THE INSIDE FACES AND TOP OF PARAPETS AND BRUSH CURBS; ALONG THE ENTIRE LENGTH BRIDGE AND WINGWALLS.

APPLY "PROTECTIVE SURFACE TREATMENT" TO THE ENTIRE TOP SURFACE OF THE NEW CONCRETE OVERLAY, THE TOP OF ANY NEW DECK, AND THE TOP OF PAVING BLOCKS.

APPLY "PIGMENTED SURFACE SEALER" TO THE TOP AND INSIDE FACES OF NEW 42SS (SPECIAL) PARAPETS.

"PREPARATION DECKS TYPE 1", PREPARATION DECKS TYPE 2", AND "FULL-DEPTH DECK REPAIR" AREAS ARE BASED ON THE PLANS AND AS DETERMINED BY THE ENGINEER. DECK PREPARATION AND FULL-DEPTH DECK REPAIRS SHALL BE FILLED WITH "CONCRETE MASONRY OVERLAY DECKS." <AREAS TO BE ADDED FOR FINAL PLANS.>

"CONCRETE SURFACE REPAIR" AREAS SHOWN IN THE QUANTITIES TABLE ARE BASED ON THE BRIDGE INSPECTION REPORT AND ARE APPROXIMATE. EXACT AREAS OF REPAIR SHALL BE DETERMINED IN THE FIELD BY THE PROJECT ENGINEER. ALL SUBSTRUCTURE CONCRETE SURFACE REPAIRS SHALL INCLUDE "EMBEDDED GALVANIC ANODES", PAID FOR SEPARATELY.

ANY EXCAVATION REQUIRED TO COMPLETE THE CONCRETE OVERLAY OR JOINT REPAIRS AT THE ABUTMENTS IS TO BE CONSIDERED INCIDENTAL TO THE BID ITEM "CONCRETE MASONRY OVERLAY DECKS."

NEW CONCRETE FOR THE DECK AND PAVING BLOCKS AT THE JOINT REPAIR AREA IS PAID FOR AS "CONCRETE MASONRY OVERLAY DECKS."

NEW CONCRETE FOR 42SS (SPECIAL) PARAPET SHAPE, INCLUDING WITHIN THE JOINT REPAIR LIMITS, IS PAID FOR AS "CONCRETE MASONRY BRIDGES."

UNDER THE BID ITEM "ADHESIVE ANCHORS NO. 5 BAR", ANCHORED REINFORCING STEEL SHALL BE PAID FOR SEPARATELY AS PROVIDED IN SECTION 505 OF THE STANDARD SPECIFICATIONS FOR BAR STEEL REINFORCEMENT.

PROFILE GRADE LINE SHALL BE DETERMINED IN THE FIELD BASED ON A MINIMUM OVERLAY THICKNESS OF 1½" PLACED ABOVE THE DECK SURFACE AFTER SURFACE PREPARATION. THE EXPECTED AVERAGE OVERLAY THICKNESS IS 2". IF EXPECTED AVERAGE OVERLAY THICKNESS IS EXCEEDED BY MORE THAN ½", CONTACT THE STRUCTURES DESIGN SECTION.

THE UTILITY INFORMATION SHOWN ON THESE DRAWINGS CONCERNING TYPE AND LOCATION IS NOT GUARANTEED TO BE ACCURATE OF ALL-INCLUSIVE. THE CONTRACTOR IS RESPONSIBLE FOR MAKING HIS OWN DETERMINATION AS TO TYPE AND LOCATION OF UTILITIES AS MAY BE NECESSARY TO AVOID DAMAGE.

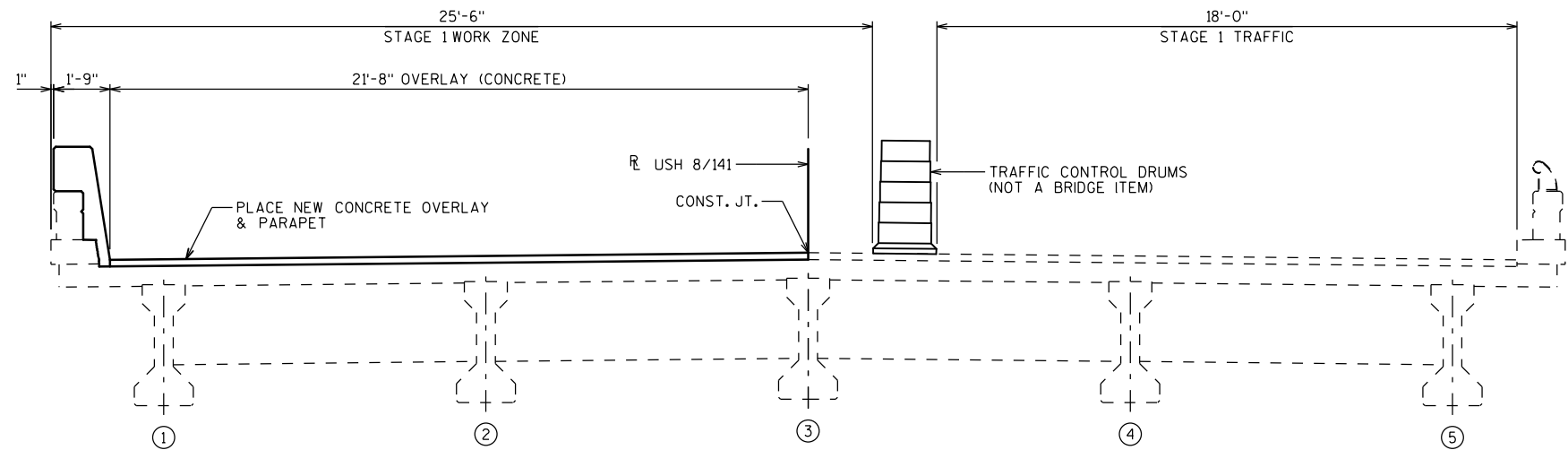
TOTAL ESTIMATED QUANTITIES

ITEM NO.	BID ITEM	UNIT	S. ABUT.	PIER 1	PIER 2	PIER 3	N. ABUT.	SUPER	TOTAL
203.0210.S	ABATEMENT OF ASBESTOS CONTAINING MATERIAL STRUCTURE B-38-15	LS	-	-	-	-	-	-	1
203.0225.S	DEBRIS CONTAINMENT B-38-15	LS	-	-	-	-	-	-	1
502.0100	CONCRETE MASONRY BRIDGES	CY	-	-	-	-	-	-	1
502.3100	EXPANSION DEVICE B-38-15	LS	-	-	-	-	-	-	-
502.3200	PROTECTIVE SURFACE TREATMENT	SY	-	-	-	-	-	-	-
502.3210	PIGMENTED SURFACE SEALER	SY	-	-	-	-	-	-	1
502.4205	ADHESIVE ANCHORS NO. 5 BAR	EACH	-	-	-	-	-	-	-
505.0600	BAR STEEL REINFORCEMENT HS COATED STRUCTURES	LB	-	-	-	-	-	-	-
509.0301	PREPARATION DECKS TYPE 1	SY	-	-	-	-	-	-	-
509.0302	PREPARATION DECKS TYPE 2	SY	-	-	-	-	-	-	-
509.0505.S	CLEANING DECKS TO REAPPLY CONCRETE MASONRY OVERLAY	SY	-	-	-	-	-	-	-
509.1000	JOINT REPAIR	SY	-	-	-	-	-	-	-
509.1500	CONCRETE SURFACE REPAIR	SF	-	-	-	-	-	-	-
509.2000	FULL-DEPTH DECK REPAIR	SF	-	-	-	-	-	-	-
509.2500	CONCRETE MASONRY OVERLAY DECKS	CY							
509.9005.S	REMOVING CONCRETE MASONRY DECK OVERLAY B-38-15	SY							
614.0150	ANCHOR ASSEMBLIES FOR STEEL PLATE BEAM GUARD	EACH	-	-	-	-	-	-	1
SPV.0060.XX	EMBEDDED GALVANIC ANODES	EACH	-	-	-	-	-	-	-
	NON-BID ITEMS								
	NAME PLATE	EACH							
	PREFORMED JOINT FILLER	SIZE							

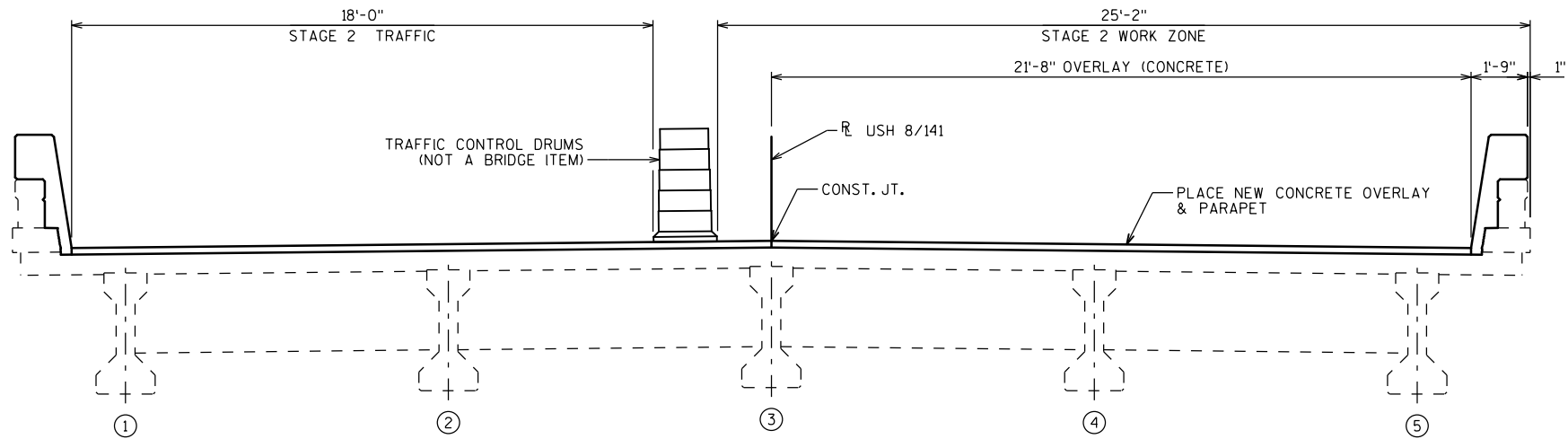
ALL ITEMS ARE CATEGORY XXXX

PRELIMINARY PLANS

NO.	DATE	REVISION	BY
STATE OF WISCONSIN DEPARTMENT OF TRANSPORTATION			
STRUCTURE B-38-15			
		DRAWN BY	MPM
		PLANS CK'D.	PJC
GENERAL NOTES & QUANTITIES			SHEET 3 OF 4

**STAGE 1 CONSTRUCTION**

LOOKING NORTH

**STAGE 2 CONSTRUCTION**

LOOKING NORTH

**PRELIMINARY PLANS**

NO.	DATE	REVISION	BY
STATE OF WISCONSIN DEPARTMENT OF TRANSPORTATION			
STRUCTURE B-38-15			
DRAWN BY		MPM	PLANS CK'D. PJC
CONSTRUCTION STAGING		SHEET 4 OF 4	