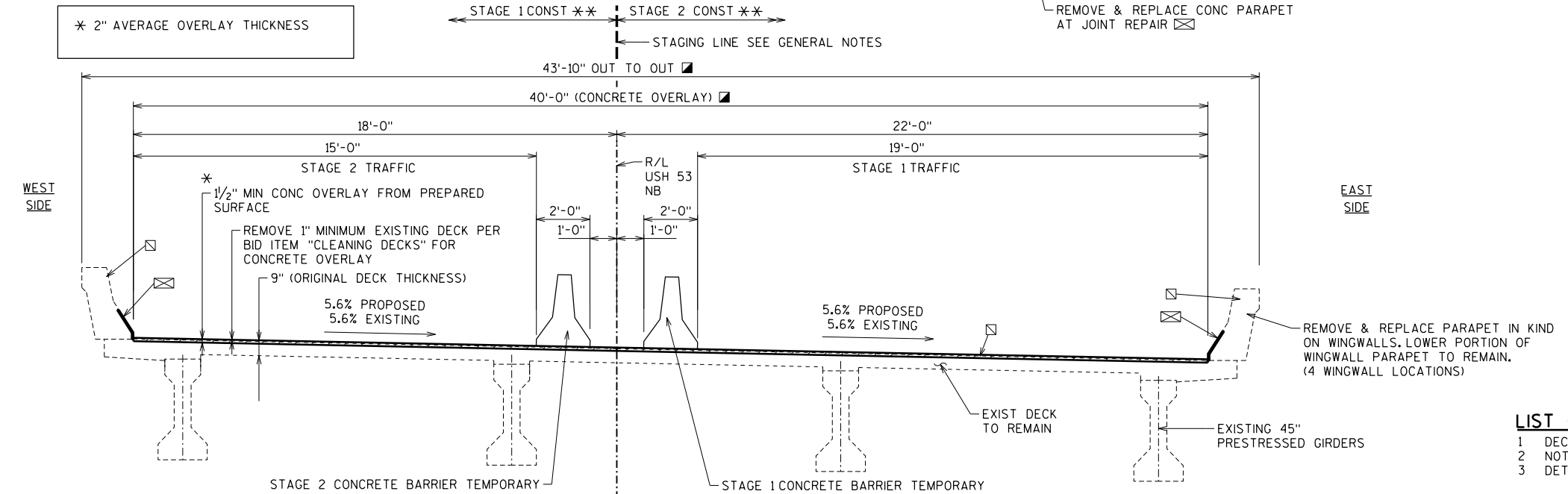


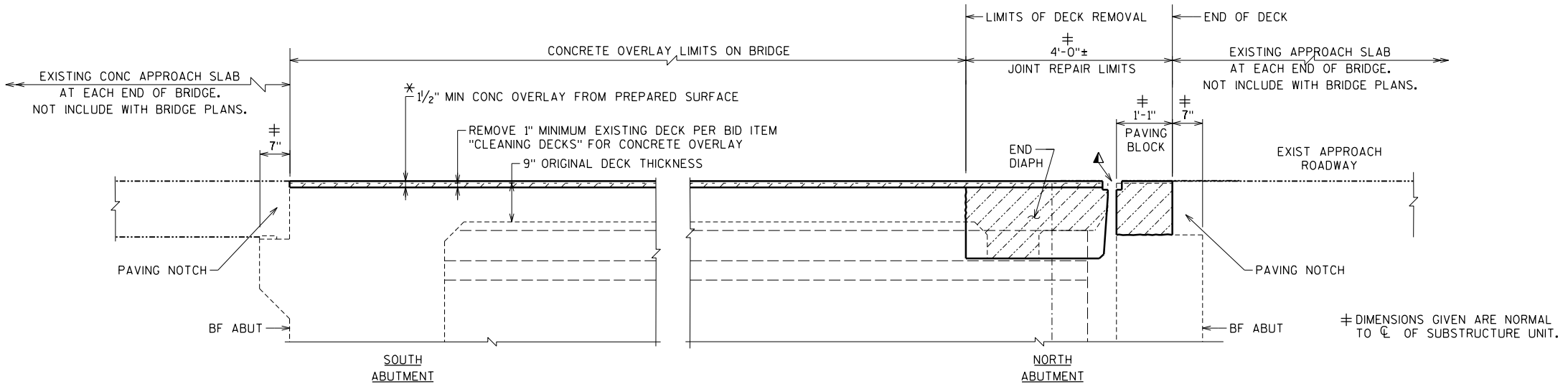
PLAN

THREE SPAN - 45" PRESTRESSED GIRDER BRIDGE



CROSS SECTION THRU ROADWAY

(LOOKING NORTH)



TYPICAL LONGITUDINAL SECTION AT END OF DECK

STATE PROJECT NUMBER

1196-04-78

LEGEND

** SEE ROADWAY PLANS FOR TRAFFIC CONTROL STAGING.

INDICATES REMOVAL

COAT PARAPET WITH "PIGMENTED SURFACE SEALER" AND COAT CONCRETE OVERLAY WITH "PROTECTIVE SURFACE TREATMENT" PER THE STANDARD SPECIFICATIONS, SEE NOTES ON SHEETS 2.

LOCATION OF ANCHOR ASSEMBLIES FOR THRIE BEAM

COVER PLATES REQUIRED AT STRIP SEAL ON PARAPETS

STRIP SEAL EXPANSION DEVICE

ON RADIAL LINES

WL = WING LENGTH

DESIGN DATA

LIVE LOAD: HS20

DESIGN LOADING:

INVENTORY RATING RF = -

OPERATING RATING RF = -

WISCONSIN STANDARD PERMIT VEHICLE (WIS-SPV) = - KIPS

MATERIAL PROPERTIES:

CONCRETE MASONRY - SUPERSTRUCTURE f'c = 4,000 psi
- OVERLAY f'c = 4,000 psi
- ALL OTHER f'c = 3,500 psi

HIGH STRENGTH BAR STEEL REINFORCEMENT
AASHTO GRADE 60 fy = 60,000 psi
ALL BAR STEEL SHALL BE EPOXY COATED

LIST OF DRAWINGS

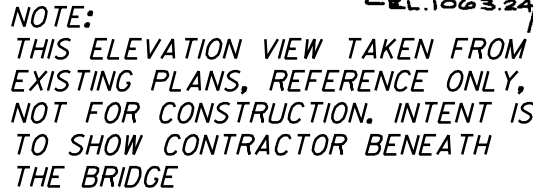
- DECK OVERLAY
- NOTES AND QUANTITIES
- DETAILS

TRAFFIC DATA

ADT (2020) = 5625
ADT (2040) = 6925
DHV = 720
DD = 61/39
T = 25.33 %
DESIGN SPEED = 70 MPH

NO.	DATE	REVISION	BY
 SHORT ELLIOTT HENDRICKSON INC.			
STATE OF WISCONSIN DEPARTMENT OF TRANSPORTATION			
ACCEPTED _____ CHIEF STRUCTURES DESIGN ENGINEER DATE _____			
STRUCTURE B-3-25			
U.S.H. 53 NB OVER KNAPP STREET			
COUNTY	BARRON	TOWN/CITY/VILLAGE	PRAIRIE LAKE
DESIGN SPEC. REHABILITATION N/A			
DESIGNED BY	DESIGN CK'D.	DRAWN BY	PLANS CK'D.
		AMJ	CJB
DECK OVERLAY			SHEET 1 OF 3

8



FILE NAME :

1196-04-78

⑤

BID ITEM NUMBER	BID ITEMS	UNIT	TOTALS
502.0100	CONCRETE MASONRY BRIDGES	CY	
502.3100	EXPANSION DEVICE B-3-25	LS	
502.3200	PROTECTIVE SURFACE TREATMENT	SY	
502.3210	PIGMENTED SURFACE SEALER	SY	
502.4205	ADHESIVE ANCHORS NO. 5 BAR	EA	
505.0600	BAR STEEL REINFORCEMENT HS COATED STRUCTURES	LB	
509.0301	PREPARATION DECKS TYPE 1	SY	
509.0302	PREPARATION DECKS TYPE 2	SY	
509.0500	CLEANING DECKS	SY	
509.1000	JOINT REAIR	SY	
509.1500	CONCRETE SURFACE REPAIR	SF	
509.2000	FULL-DEPTH DECK REPAIR	SY	
509.2500	CONCRETE MASONRY OVERLAY DECKS	CY	
509.9050,S	CLEANING PARAPETS	LF	
	EPOXY COAT GIRDER ENDS	LF	
	NON-BID ITEMS		
	FILLER	SIZE	1/2"
	NAMEPLATE	EACH	1

- ① BASED ON 1" DEEP BY LIMITS OF OVERLAY ON DECK.
- ② CONCRETE FOR:
* PREPARATION DECKS TYPE 1 & 2, *FULL-DEPTH DECK REPAIR AND OVERLAY
AND JOINT REPAIR INCLUDING PAVING BLOCK AND OVERLAY.
- ③ PERTAINS TO DECK.
- ④ FURNISH AND APPLY PIGMENTED SEALER TO FRONT FACE, TOP, AND ENDS OF PARAPET,
CLEAN THE INSIDE FACE, TOP AND ENDS OF PARAPET PER BID ITEM "CLEANING PARAPET".
APPLICATION AND QUANTITY FOR PIGMENTED SURFACE SEALER ARE CONSIDERED
INCIDENTAL TO BRIDGE BID ITEM " PIGMENTED SURFACE SEALER".

FURNISH AND APPLY A PROTECTIVE SURFACE TREATMENT TO THE ENTIRE TOP SURFACE
OF THE DECK OVERLAY AND PAVING BLOCK.
APPLICATION AND QUANTITY FOR PROTECTIVE SURFACE TREATMENT ARE CONSIDERED
INCIDENTAL TO BRIDGE BID ITEM "PROTECTIVE SURFACE TREATMENT".
- ⑤ AS LOCATED BY FIELD ENGINEER.
- ⑥ UNDISTRIBUTED AMOUNT.
- ⑦ INCLUDES PARAPETS ON DECK.
- ⑧ INCLUDES CONCRETE FOR WING PARAPETS AND JOINT REPAIR AT PARAPETS ONLY.

```
-PREPARATION DECKS TYPE 1 = CY
-PREPARATION DECKS TYPE 2 = CY
-FULL-DEPTH DECK REPAIR = CY
```

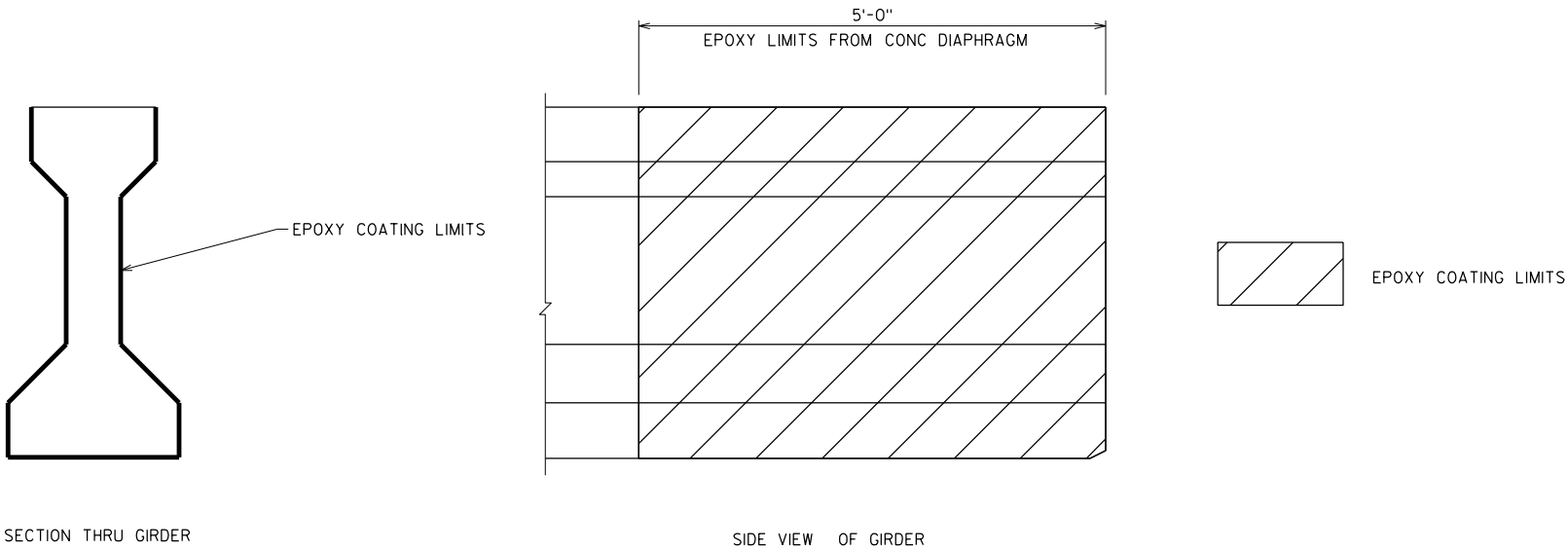
8

NO.	DATE	REVISION	BY
STATE OF WISCONSIN DEPARTMENT OF TRANSPORTATION			
STRUCTURE B-3-25			
		DRAWN BY AMJ	PLANS CK'D. CJB
NOTES AND QUANTITIES		SHEET 2 OF 3	

FILE NAME : \\SP3020-\\projects\\UZ\\W\\Wtrnw\\146423\\5-final-dsgn\\51-drawings\\20-Struct\\B-3-25\\bridge\\b03025g2.dgn PLOT DATE: 2/2/2019 PLOT TIME: 2:45:18 PM

8

STATE PROJECT NUMBER
1196-04-78



EPOXY COAT GIRDER DETAIL
(TYP AT ABUTMENT LOCATIONS ONLY)

8

NO.	DATE	REVISION	BY
STATE OF WISCONSIN DEPARTMENT OF TRANSPORTATION			
STRUCTURE B-3-25			
		DRAWN BY	AMJ
		PLANS CK'D.	CJB
DETAILS		SHEET 3 OF 3	