

FEMRITE DRIVE
A.A.D.T. = 3,800 (2020)
A.A.D.T. = 9,800 (2040)
R.D.S. = 40 M.P.H.



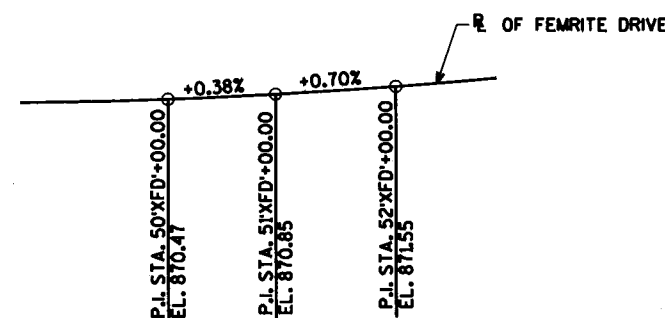
FOR TYPICAL SECTION
SEE SHEET 2



1. PRELIMINARY PLAN
2. TYPICAL SECTIONS AND NOTES
3. DETAILS AND QUANTITIES
4. SUBSURFACE EXPLORATION

CONSULTANT CONTACT:
CHRIS MCMAHON
(715)-834-3161

DRAWINGS SHALL NOT BE SCALED.
BAR STEEL REINFORCEMENT SHALL BE EMBEDDED 2" CLEAR UNLESS SHOWN OR NOTED OTHERWISE.
THE FIRST DIGIT OF A THREE DIGIT BAR NO. OR THE FIRST TWO DIGITS OF A FOUR DIGIT BAR NO. SIGNIFIES THE BAR SIZE.
JOINT FILLER SHALL CONFORM TO THE REQUIREMENTS OF A.A.S.H.T.O. DESIGNATION M 153, TYPE I, II, OR III OR A.A.S.H.T.O. DESIGNATION M 213.
THE EXISTING GROUNDLINE SHALL BE THE UPPER LIMITS OF "EXCAVATION FOR STRUCTURES BRIDGES B-13-732".
AT THE BACKFACE OF ABUTMENTS ALL VOLUME WHICH CANNOT BE PLACED BEFORE ABUTMENT CONSTRUCTION AND IS NOT OCCUPIED BY THE NEW STRUCTURE SHALL BE BACKFILLED WITH BACKFILL STRUCTURE TYPE A.
THE BACKFILL QUANTITIES ARE BASED ON THE PAY LIMITS SHOWN ON THE PLANS AND MAY NOT REFLECT ACTUAL PLACED QUANTITIES.
"BACKFILL STRUCTURE TYPE A" REQUIRED DIRECTLY BEHIND ABUTMENTS AND ABUTMENT WINGS FOR 3 FEET. BACKFILL PLACED BEYOND PAY LIMITS OR EXCEEDING PLAN QUANTITIES SHALL BE INCIDENTAL TO EXCAVATION FOR STRUCTURES.
EXCAVATION BELOW THE ABUTMENT AND ABUTMENT BEDDING MATERIALS REQUIRES ENGINEER APPROVAL. GEOTEXTILE SHALL BE SET AT THE BOTTOM OF EXCAVATION AND EXTEND 2'-0" ABOVE BOTTOM OF ABUTMENT.
THE HAUNCH CONCRETE QUANTITY IS BASED ON THE AVERAGE HAUNCH SHOWN ON THE PRESTRESSED GIRDER DETAILS SHEET.
BEVEL EXPOSED EDGES OF CONCRETE $\frac{3}{4}$ " UNLESS OTHERWISE NOTED.
POLYMER OVERLAY AND PIGMENTED SURFACE SEALER IS TO BE APPLIED AS SHOWN IN DETAIL ON SHEET 3.
ELASTOMERIC BEARING PADS NEED NOT BE INDIVIDUALLY MOLDED PROVIDED THE CUT EDGES ARE SMOOTH AND TRUE.
THE SLOPE OF THE FILL IN FRONT OF THE ABUTMENTS SHALL BE COVERED WITH SLOPE PAVING MATERIAL TO THE EXTENT SHOWN ON THE GENERAL PLAN SHEET AND IN THE ABUTMENT DETAILS.
THE RUSTIFICATIONS IN THE ABUTMENTS AND PIER ARE INCLUDED IN THE BID ITEM "CONCRETE MASONRY BRIDGES".
THE RUSTIFICATIONS AT THE BACK FACE OF THE PARAPETS ARE INCLUDED IN THE BID ITEM "HIGH PERFORMANCE CONCRETE (HPC) MASONRY STRUCTURES".
DECK SURFACE PREPARATION IS INCLUDED IN THE BID ITEM "POLYMER OVERLAY".



\$PRNAME\$
V:\Structures-EC\41-0660.DX - IH-39 Dane Partners General Bridge Information-B-13-732 - 139_NB over Femrite DriveBridge.ssp

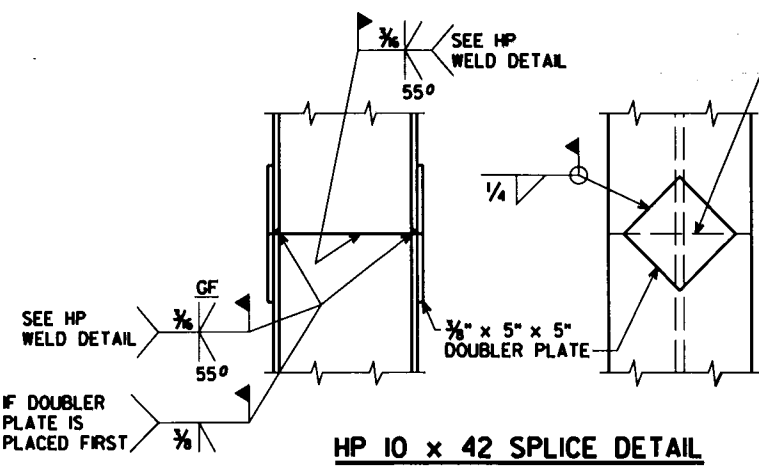
TOTAL ESTIMATED QUANTITIES

STATE PROJECT NUMBER

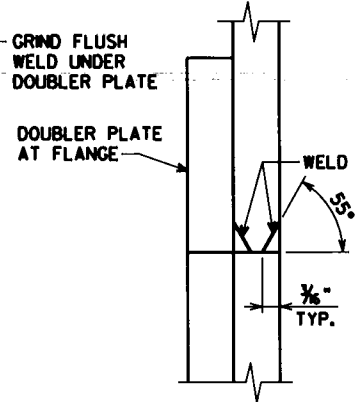
1007-12-78

BID ITEM NUMBER	BID ITEMS	UNIT	S. STR. APR. SLAB	S. ABUT.	PIER 1	PIER 2	N. ABUT.	N. STR. APR. SLAB	SUPER.	TOTAL
206.1000	EXCAVATION FOR STRUCTURES BRIDGES B-13-732	LS	-----	-----	-----	-----	-----	-----	-----	1
210.1500	BACKFILL STRUCTURE TYPE A	TON	-----	-----	-----	-----	-----	-----	-----	
305.0120	BASE AGGREGATE DENSE 1 1/4-INCH	TON	-----	-----	-----	-----	-----	-----	-----	
501.1000.S	ICE HOT WEATHER CONCRETING	LB								
502.0100	CONCRETE MASONRY BRIDGES	CY							-----	
502.3200	PROTECTIVE SURFACE TREATMENT	SY		-----	-----	-----	-----		-----	
502.3210	PIGMENTED SURFACE SEALER	SY		-----	-----	-----	-----		-----	
503.0137	PRESTRESSED GIRDER TYPE I 36W-INCH	LF	-----	-----	-----	-----	-----	-----	-----	
505.0400	BAR STEEL REINFORCEMENT HS STRUCTURES	LB	-----					-----	-----	
505.0600	BAR STEEL REINFORCEMENT HS COATED STRUCTURES	LB								
505.0800.S	BAR STEEL REINFORCEMENT HS STAINLESS STRUCTURES	LB		-----	-----	-----	-----		-----	
506.2605	BEARING PADS ELASTOMERIC NON-LAMINATED	EACH	-----					-----	-----	
506.4000	STEEL DIAPHRAGMS B-13-732	EACH	-----	-----	-----	-----	-----	-----		
509.5100.S	POLYMER OVERLAY	SY	-----	-----	-----	-----	-----	-----	-----	
516.0500	RUBBERIZED MEMBRANE WATERPROOFING	SY	-----					-----	-----	
517.1010.S	CONCRETE STAINING B-13-732	SF								
550.0500	PILE POINTS	EACH	-----					-----	-----	
550.1100	PILING STEEL HP 10-INCH x 42 LB	LF	-----					-----	-----	
604.0500	SLOPE PAVING CRUSHED AGGREGATE	SY	-----		-----	-----		-----	-----	
612.0406	PIPE UNDERDRAIN WRAPPED 6-INCH	LF	-----		-----	-----		-----	-----	
614.0150	ANCHOR ASSEMBLIES FOR STEEL PLATE BEAM GUARD	EACH		-----	-----	-----		-----	-----	
645.0111	GEOTEXTILE TYPE DF SCHEDULE A	SY	-----		-----	-----		-----	-----	
652.0125	CONDUIT RIGID METALLIC 2-INCH	LF	-----	-----	-----	-----	-----			
652.0225	CONDUIT RIGID NONMETALLIC SCHEDULE 40 2-INCH	LF	-----	-----	-----	-----	-----			
653.0220	JUNCTION BOXES 18 X 6 X 6-INCH	EACH	-----	-----	-----	-----	-----	-----		
SPV.0035.700	HIGH PERFORMANCE CONCRETE (HPC) MASONRY STRUCTURES	CY		-----	-----	-----	-----			
SPV.0165.700	LONGITUDINAL GROOVING BRIDGE DECK	SY		-----	-----	-----	-----		-----	
	NON-BID ITEMS	SIZE	-----	-----	-----	-----	-----	-----	-----	1/2" & 3/4"
	FILLER									

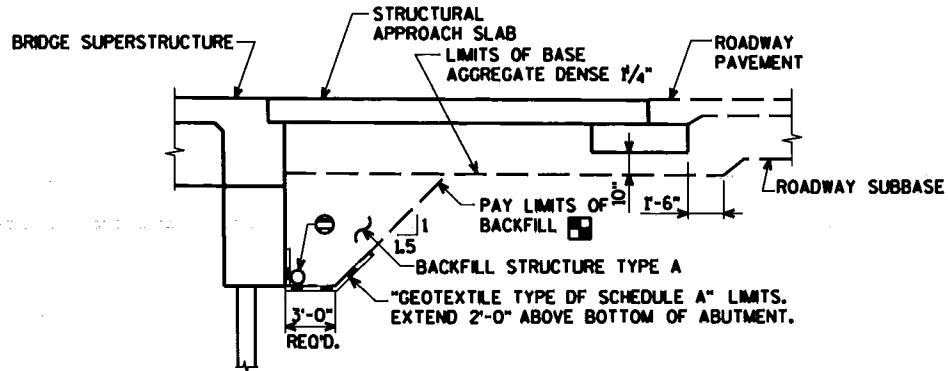
⊕ HIGH PERFORMANCE CONCRETE (HPC) MASONRY STRUCTURES SHALL INCLUDE ALL SUPERSTRUCTURE CONCRETE AND ALL STRUCTURAL APPROACH SLAB CONCRETE, EXCEPT THE STRUCTURAL APPROACH SLAB FOOTING CONCRETE.



HP 10 x 42 SPlice DETAIL



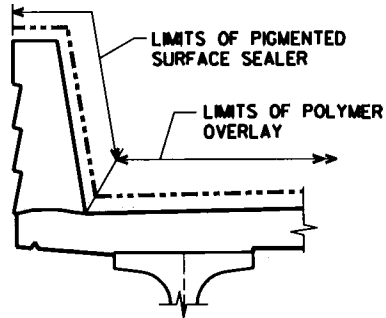
HP WELD DETAIL
FLANGE SHOWN, WEB SIMILAR



BACKFILL STRUCTURE LIMITS

⊠ BACKFILL PAY LIMITS. BACKFILL BEYOND BACKFILL PAY LIMITS SHALL BE INCLUDED WITH EXCAVATION FOR STRUCTURES. LIMITS OF EXCAVATION SHALL BE DETERMINED BY THE CONTRACTOR.

⊖ PIPE UNDERDRAIN WRAPPED 6-INCH, SLOPE 0.5% MIN. TO SUITABLE DRAINAGE. ATTACH RODENT SHIELD AT ENDS OF PIPE UNDERDRAIN AS DETAILED ON SHEET x.



POLYMER OVERLAY AND PIGMENTED SURFACE SEALER DETAILS

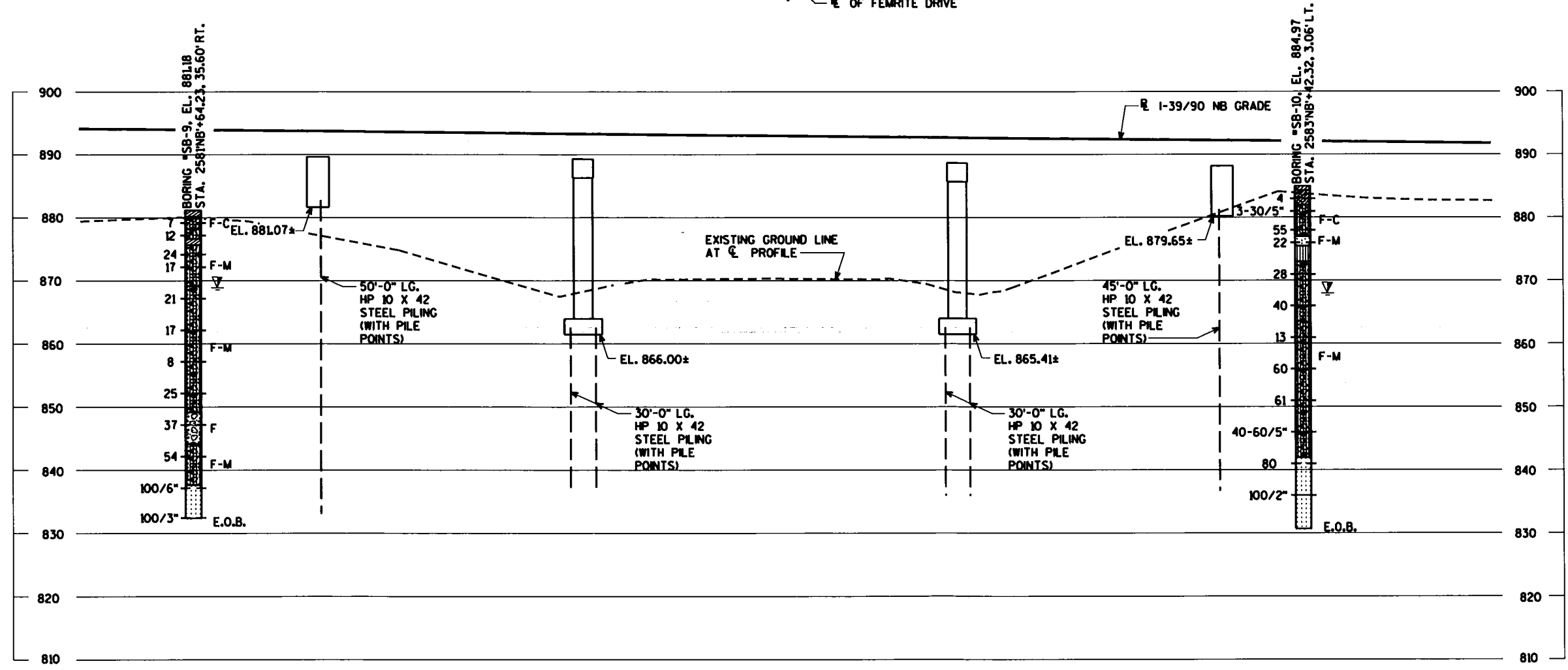
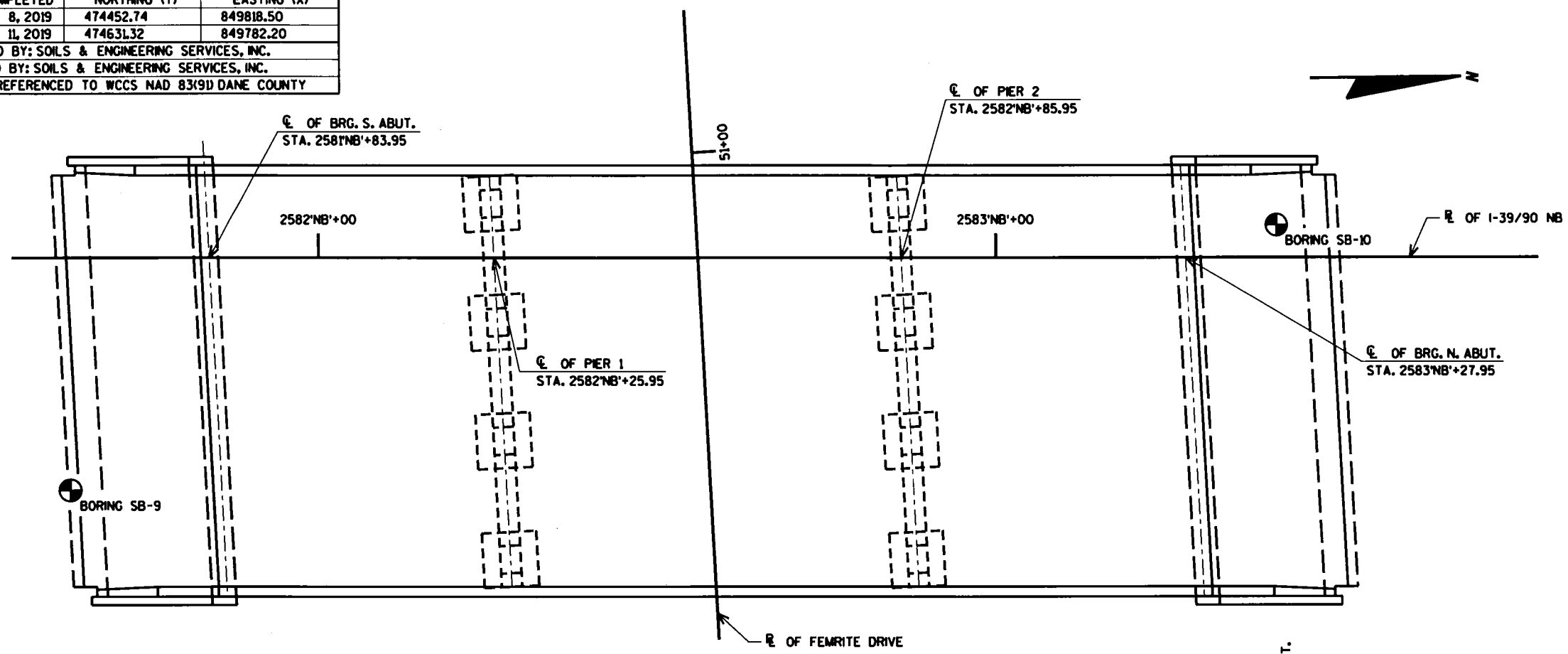
NO.	DATE	REVISION	BY
STATE OF WISCONSIN DEPARTMENT OF TRANSPORTATION			
STRUCTURE B-13-732			
DRAWN BY JLB		PLANS CK'D.	
DETAILS AND QUANTITIES		SHEET 3 OF 4	

ORIGINAL PLANS PREPARED BY
AYRES ASSOCIATES
3433 Oakwood Hills Parkway
Eau Claire, WI 54701
www.AyresAssociates.com

\$PRNAME\$
V:\Structures-EC\41-0660.0X - IH-39 Dane Partners General Bridge Information\B-13-732 - I39_NB over Femrite Drive\Bri

BORING	DATE COMPLETED	NORTHING (Y)	EASTING (X)
SB-9	JANUARY 8, 2019	474452.74	849818.50
SB-10	JANUARY 11, 2019	474631.32	849782.20

BORINGS COMPLETED BY: SOILS & ENGINEERING SERVICES, INC.
REPORT COMPLETED BY: SOILS & ENGINEERING SERVICES, INC.
ALL COORDINATES REFERENCED TO WCCS NAD 83(9D) DANE COUNTY



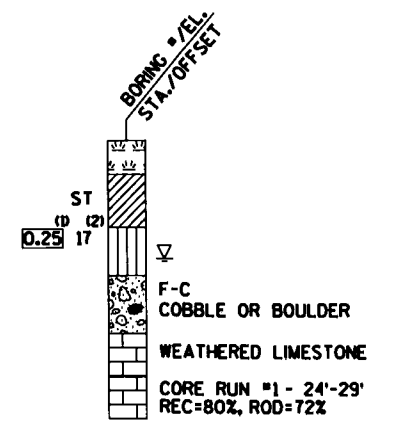
STATE PROJECT NUMBER

1007-12-78

MATERIAL SYMBOLS

ASPHALT	TOPSOIL	PEAT
CONCRETE	FILL	GRAVEL
SAND	CLAY	SILT
BOULDERS OR COBBLES	LIMESTONE	BEDROCK (UNKNOWN)
SHALE	SANDSTONE	IGNEOUS/META

LEGEND OF BORING



⁽¹⁾ UNCONFINED STRENGTH, AS DETERMINED BY A POCKET PENETROMETER (TSF)

⁽²⁾ UNLESS OTHERWISE SPECIFIED THE SPT 'N' VALUE IS BASED ON AASHTO T-206, STANDARD PENETRATION TEST. THE SPT 'N' VALUE PRESENTED HAS NOT BEEN CORRECTED FOR OVERBURDEN PRESSURE OR HAMMER EFFICIENCY.

GROUND WATER ELEVATION

- ▽ AT TIME OF DRILLING
- ▽ END OF DRILLING
- ▽ AFTER DRILLING

ABBREVIATIONS

F-FINE M-MEDIUM C-COARSE ST-SHELBY TUBE

SUBSURFACE EXPLORATION FOR FOUNDATION DESIGN AND BIDDERS INFORMATION

BORINGS WERE COMPLETED AT POINTS APPROXIMATELY AS INDICATED ON THIS DRAWING TO OBTAIN INFORMATION CONCERNING THE CHARACTER OF SUBSURFACE MATERIALS FOUND AT THE SITE. BECAUSE THE INVESTIGATED DEPTHS ARE LIMITED AND THE AREA OF THE BORINGS IS VERY SMALL IN RELATION TO THE ENTIRE SITE, THE WISCONSIN DEPARTMENT OF TRANSPORTATION DOES NOT WARRANT SIMILAR SUBSURFACE CONDITIONS BELOW, BETWEEN, OR BEYOND THESE BORINGS. VARIATIONS IN SOIL CONDITIONS SHOULD BE EXPECTED AND FLUCTUATIONS IN GROUNDWATER LEVELS MAY OCCUR.

NO.	DATE	REVISION	BY
STATE OF WISCONSIN DEPARTMENT OF TRANSPORTATION			
STRUCTURE B-13-732			
DRAWN BY		CJM	PLANS CK'D.
SUBSURFACE EXPLORATION		SHEET 4 OF 4	