

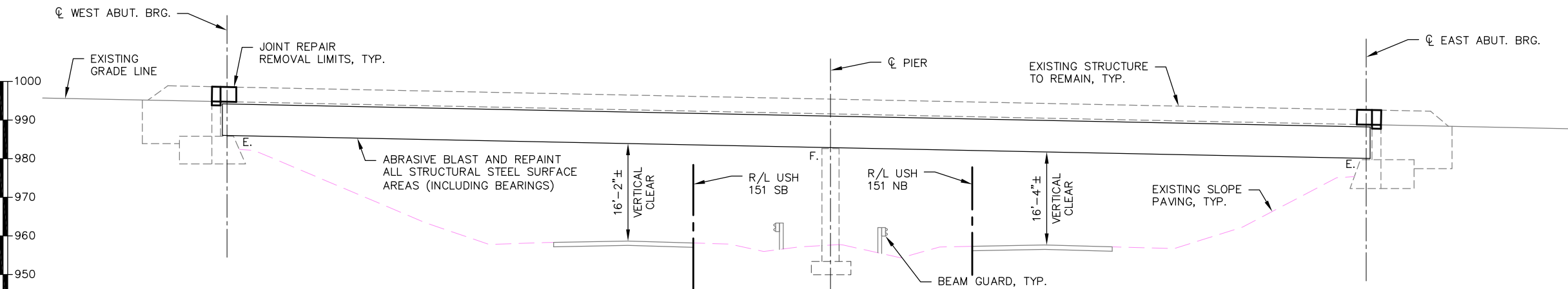
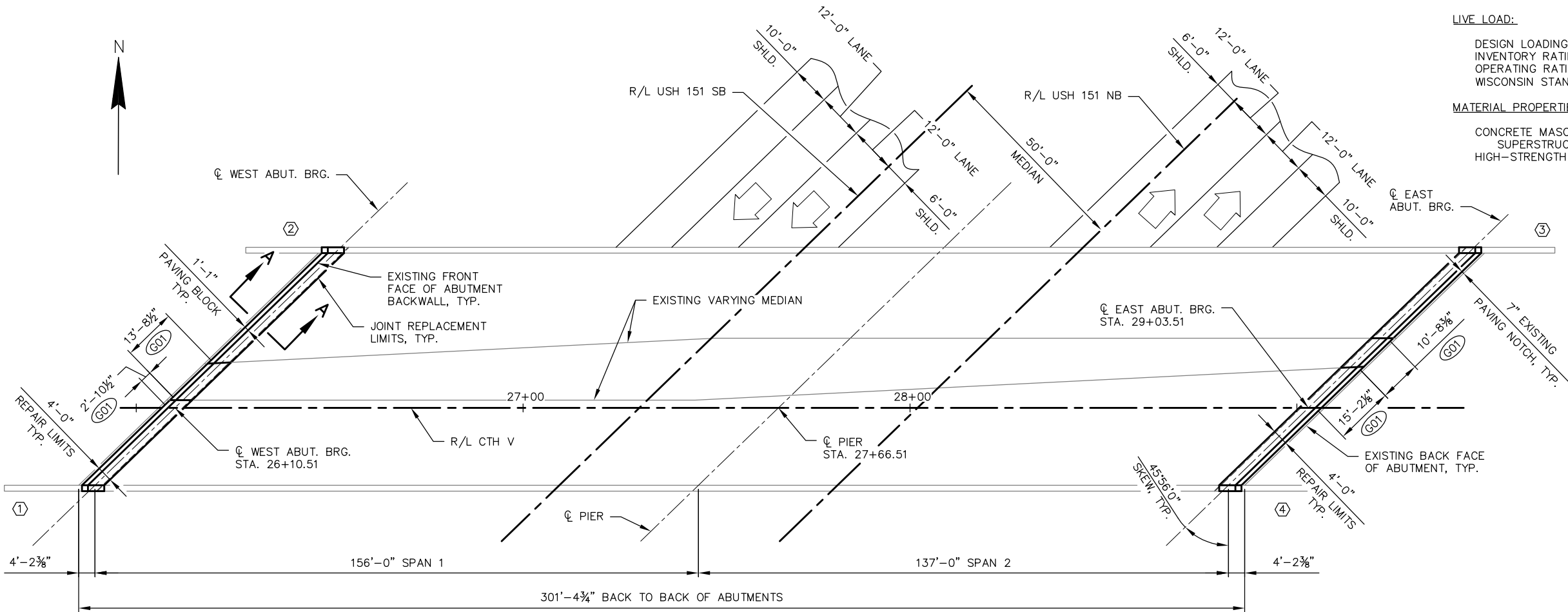
DESIGN DATA

LIVE LOAD:

DESIGN LOADING \_\_\_\_\_ HS20  
INVENTORY RATING FACTOR \_\_\_\_\_ HS31  
OPERATING RATING FACTOR \_\_\_\_\_ HS52  
WISCONSIN STANDARD PERMIT VEHICLE RATING (WIS.-SPV): — 250 KIPS

MATERIAL PROPERTIES:

CONCRETE MASONRY: \_\_\_\_\_  
SUPERSTRUCTURE \_\_\_\_\_  $f_c = 4,000$  P.S.I.  
HIGH-STRENGTH BAR STEEL REINFORCEMENT \_\_\_\_\_  $f_y = 60,000$  P.S.I.



NOTES

FOR SECTION A-A SEE "QUANTITIES AND CROSS SECTION" SHEET.

ROUGHEN EXISTING CONCRETE 1/4" MIN. EVERYWHERE NEW CONCRETE COMES INTO CONTACT WITH EXISTING CONCRETE.

- ① INDICATES WING NUMBER  
G01 MEASURED ALONG  $\phi$  ABUTMENT BRG. AT THE FRONT FACE OF THE EXISTING ABUTMENT BACKWALL.

TRAFFIC DATA:

USH 151  
A.A.D.T. (2018) — 25,300  
A.A.D.T. (2038) — 31,800  
DESIGN SPEED — 70 M.P.H.

CTH V  
A.A.D.T. (2009) — 1,500  
A.A.D.T. (2013) — 1,510  
DESIGN SPEED — 50 M.P.H.

LIST OF DRAWINGS

1. GENERAL PLAN
2. QUANTITIES AND CROSS SECTION
3. EXPANSION JOINT DETAILS
4. COVER PLATE DETAILS
5. PARAPET DETAILS

CONSULTANT CONTACT  
ANDREW KNUTSON, P.E., S.E.  
(608) 588-7866

BRIDGE OFFICE CONTACT  
WILLIAM DREHER, P.E.  
(608) 266-8489

NO.	DATE	REVISION	BY
<b>WESTBROOK</b> Associated Engineers, Inc.			
619 EAST HOXIE STREET P.O. BOX 429 SPRING GREEN, WI 53588 PHONE (608) 588-7866 FAX (608) 588-7954			
STATE OF WISCONSIN DEPARTMENT OF TRANSPORTATION			
ACCEPTED _____ CHIEF STRUCTURES DESIGN ENGINEER DATE			
<b>STRUCTURE B-13-288</b>			
CTH V OVER USH 151			
COUNTY	DANE	TOWN/CITY/VILLAGE	YORK
DESIGN SPEC.	REHABILITATION N/A		
DESIGNED BY	JDO	DESIGN CK'D.	CDS
DRAWN BY	JDO	PLANS CK'D.	CDS
GENERAL PLAN			SHEET 1 OF XX

GENERAL NOTES

DRAWINGS SHALL NOT BE SCALED.

BAR STEEL REINFORCEMENT SHALL BE EMBEDDED 2" CLEAR UNLESS OTHERWISE SHOWN OR NOTED.

THE FIRST OR FIRST TWO DIGITS OF THE BAR MARK SIGNIFIES THE BAR SIZE.

DIMENSIONS, ELEVATIONS, AND STATIONING SHOWN ARE BASED ON THE ORIGINAL STRUCTURE PLANS.

THE EXISTING STRUCTURE, B-13-288 IS A TWO SPAN STEEL DECK GIRDER STRUCTURE WITH AN OVERALL WIDTH OF 63'-0" AND AN OVERALL LENGTH BETWEEN BACK OF ABUTMENTS OF 301'-4 $\frac{3}{4}$ ". THE EXPANSION JOINTS SHALL BE REPLACED.

ALL CONCRETE REMOVAL SHALL BE DEFINED BY A 1 INCH DEEP SAW CUT.

PROTECTIVE SURFACE TREATMENT SHALL BE APPLIED TO THE TOP OF DECK AND PAVING BLOCK AT THE JOINT REPAIR AREAS.

PIGMENTED SURFACE SEALER TO BE APPLIED TO FRONT FACE AND TOP OF PARAPET SURFACES IN THE JOINT REPAIR AREAS.

UTILIZE EXISTING BAR STEEL REINFORCEMENT WHERE SHOWN AND EXTEND 24 BAR DIAMETERS INTO NEW WORK, UNLESS SPECIFIED OTHERWISE.

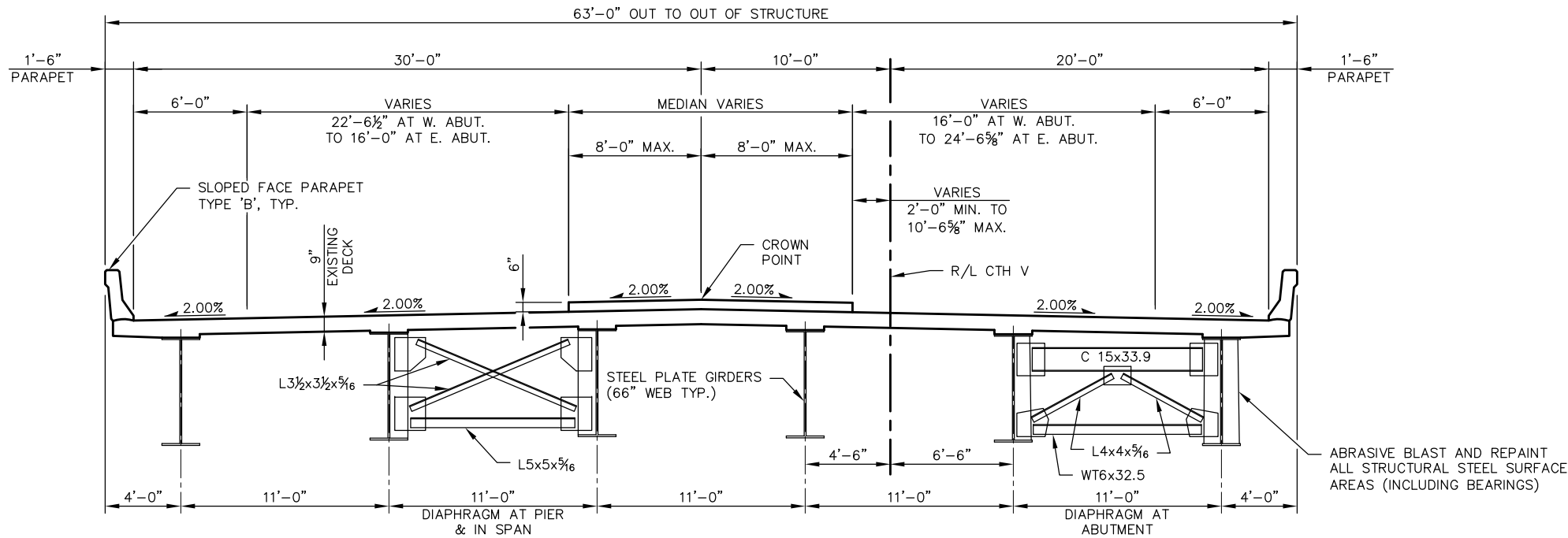
IF EXISTING BAR STEEL REINFORCEMENT IS SEVERELY CORRODED OR DAMAGED DURING CONCRETE REMOVAL, REPLACE WITH EPOXY ANCHORED BARS OF THE SAME SIZE AT THE DIRECTION OF THE ENGINEER. EMBED 1'-6" INTO EXISTING CONCRETE.

NOTES

ROUGHEN EXISTING CONCRETE  $\frac{1}{4}$ " MIN. EVERYWHERE NEW CONCRETE COMES INTO CONTACT WITH EXISTING CONCRETE.

G02 SALVAGE EXISTING REINFORCEMENT & EXTEND FULL LENGTH INTO NEW WORK. TRIM REBAR AS NECESSARY TO ACCOMMODATE NEW JOINT OPENING.

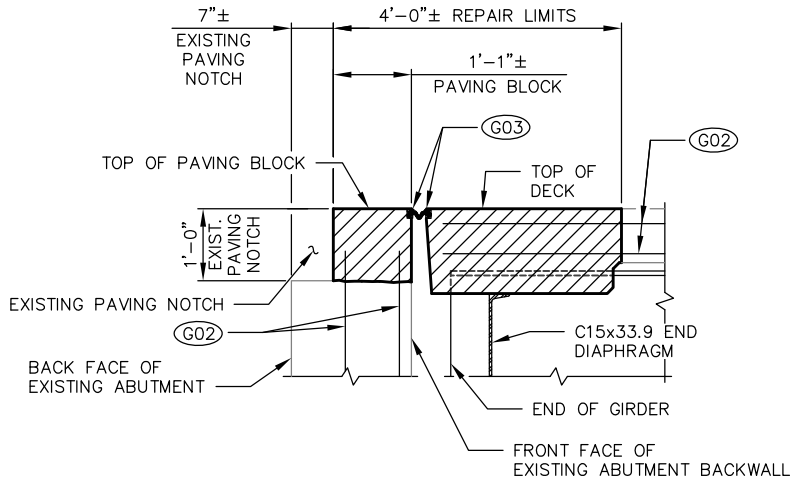
G03 REMOVE EXISTING STRIP SEAL/STEEL EXTRUSIONS



CROSS SECTION THRU ROADWAY  
(LOOKING EAST)

TOTAL ESTIMATED QUANTITIES

ITEM NO.	BID ITEMS	UNIT	TOTALS
203.0225.S	DEBRIS CONTAINMENT STRUCTURE B-13-288	LS	---
502.3100	EXPANSION DEVICE B-13-288	LS	---
502.3200	PROTECTIVE SURFACE TREATMENT	SY	---
502.3210	PIGMENTED SURFACE SEALER	SY	---
502.4205	ADHESIVE ANCHORS NO. 5 BARS	EACH	---
505.0600	BAR STEEL REINFORCEMENT HS COATED STRUCTURES	LB	---
509.1000	JOINT REPAIR	SY	---
517.1800.S	STRUCTURE REPAINTING RECYCLED ABRASIVE B-13-288	LS	---
517.4500.S	NEGATIVE PRESSURE CONTAINMENT AND COLLECTION OF WASTE MATERIALS B-13-288	LS	---
517.6001.S	PORTABLE DECONTAMINATION FACILITY	EACH	---



SECTION A-A SHOWING EXISTING JOINT REMOVAL  
(NORMAL TO C SUBSTRUCTURE)

NO.	DATE	REVISION	BY
STATE OF WISCONSIN DEPARTMENT OF TRANSPORTATION			
STRUCTURE B-13-288			
DRAWN BY JDO		PLANS CK'D CDS	
QUANTITIES AND CROSS SECTION			SHEET 2 OF XX