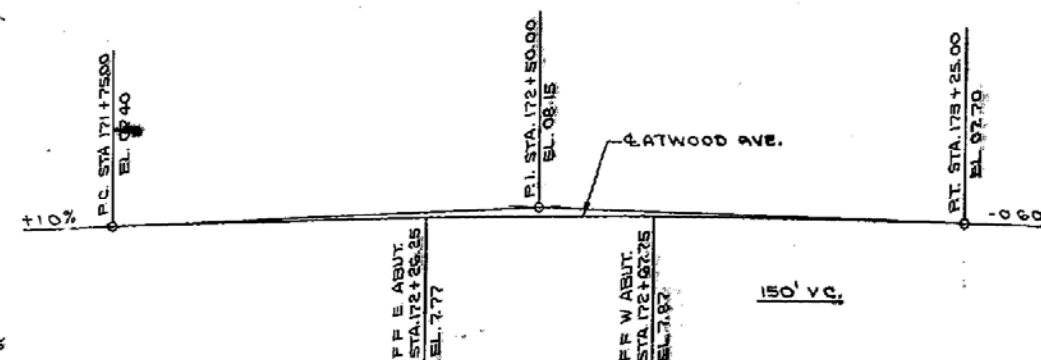
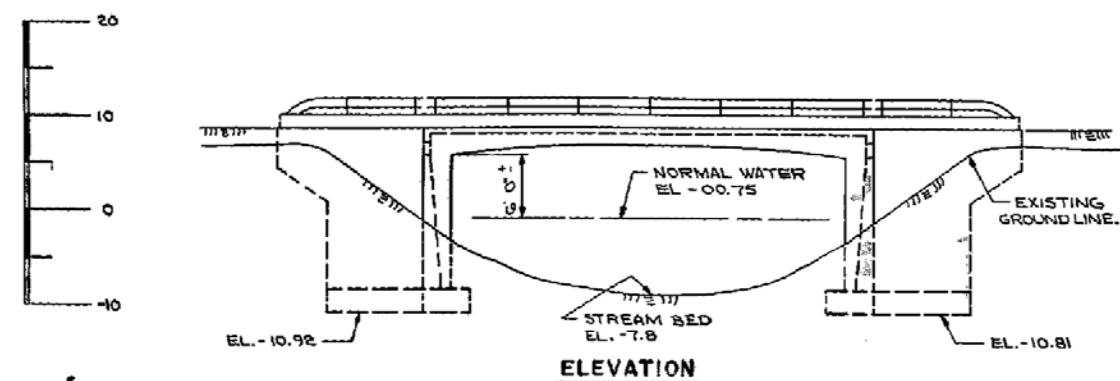


## BENCH MARK

NO	STATION	DESCRIPTION	ELEV.
25	172+15.00	CHISELED TOP CONC. RAILING, S.W. COR BRIDGE-28' LT	10.60

MADISON DATUM EL. 0.00 - U.S.G.S. DATUM EL. 845.60.

COUNTY	ROUTE	SECTION	STATE	FEDERAL	DIVISION	PROJECT	SHEET NO.	TOTAL SHEETS
13.6	0.0	3.31						



## PROFILE GRADE LINE ON E. ATWOOD AVE.

## GENERAL NOTES

DRAWINGS SHALL NOT BE SCALED.  
 BEVEL EXPOSED EDGES OF CONCRETE 1" UNLESS OTHERWISE NOTED.  
 BAR STEEL REINFORCEMENT SHALL BE IMBEDDED 2" CLEAR UNLESS OTHERWISE SHOWN OR NOTED.  
 UPPER LIMITS OF "EXCAVATION FOR STRUCTURES" SHALL BE THE EXISTING GROUND LINE.  
 JOINT FILLER SHALL CONFORM TO AASHTO DESIGNATION M153 TYPE I.  
 ALL EXCAVATED VOLUME NOT OCCUPIED BY THE NEW STRUCTURE SHALL BE BACKFILLED WITH GRANULAR BACKFILL TO THE ORIGINAL GROUND LINE. PLACE GRANULAR BACKFILL IN BACK FACE ONLY. PAYMENT WILL BE MADE ONLY FOR MATERIAL ACTUALLY PLACED WITHIN LIMITS SPECIFIED FOR EXCAVATION FOR STRUCTURES.  
 FALSEWORK TO BE SUPPORTED ON PILES.

## DESIGN DATA

## LOADING - H320

## ALLOWABLE DESIGN STRESSES

CONCRETE MASONRY, GRADE "AA"  $f_c = 1,400 \text{ p.s.i.}$   
 BAR STEEL REINFORCEMENT  $f_s = 20,000 \text{ p.s.i.}$

## FOUNDATION DATA

PILING SHALL BE UNTREATED TIMBER PILING, EST 40'-0" LONG, AND DRIVEN TO A MINIMUM BEARING VALUE OF 24 TONS PER PILE.

## LIST OF DRAWINGS

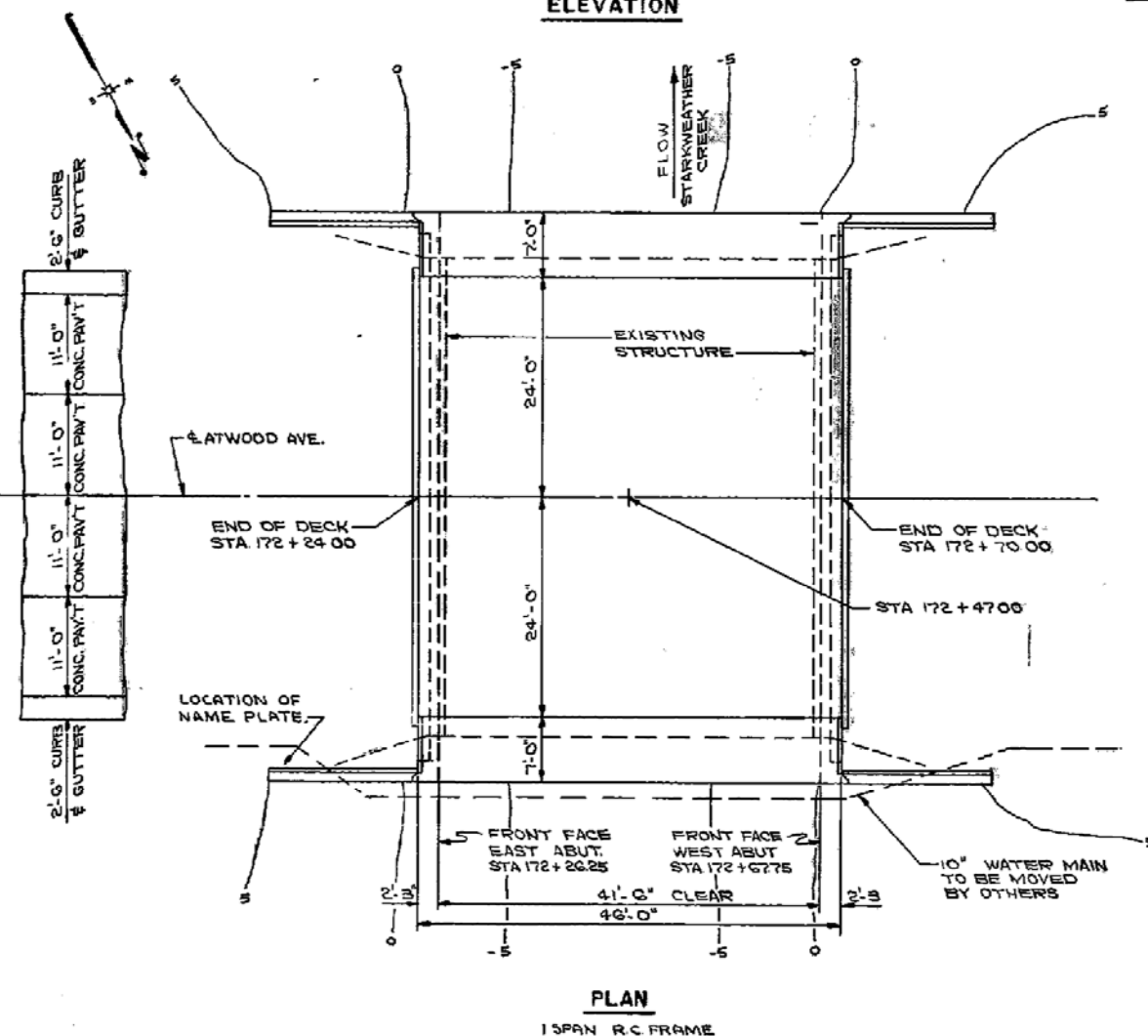
- 1 GENERAL PLAN X33612
- 2 SUPERSTRUCTURE X33613
- 3 TUBULAR ALUMINUM RAILING TYPE "H" X33614
- 4 TUBULAR STEEL RAILING TYPE "H" X33615
- 5 ABUTMENTS X33616
- 6 BILL OF BARS X33617
- 7 SUBSURFACE EXPLORATION X33617A

STATE HIGHWAY COMMISSION OF WISCONSIN			
GENERAL PLAN			
NO.	DATE	BY	FOR
8	7/1/98	N. B. Schultz	172+47.00
SECTION 8 FROM 7N TO 10E			
DESIGN BY: AASHTO 611, H320, 1968			
DATE: 27-65 DESIGN: L.J.S. DRAWN: KOK FOR: F.R.W.			
APPROVED: N. B. Schultz			
APPROVED: J. J. Schmitt			
STRUCTURE B-13-254 SHEET 1 OF 7			

## TOTAL ESTIMATED QUANTITIES

BID ITEMS	UNITS	SUPER	E ABUT	W ABUT	TOTAL
REMOVING OLD BRIDGE	LS	---	---	---	1
EXCAVATION FOR STRUCTURES	C.Y.	---	460	460	920
CONCRETE MASONRY	C.Y.	20+2	123.4	123.5	451.1
BAR STEEL REINFORCEMENT	LB	17,610	80,720	80,720	59,050
UNTREATED TIMBER TEST PILING	LS	---	---	---	1
UNTREATED TIMBER PILING, DEL	LF	---	600	600	1,200
UNTREATED TIMBER PILING, DR	LF	---	600	600	1,200
TUBULAR RAILING, TYPE "H"	LF	154	---	---	154
GRANULAR BACKFILL	C.Y.	---	330	330	660
METAL CONDUIT, 2-INCH	LF	188	---	---	188
NON-BID ITEMS					
FILLER	SIZE	---	4 1/2	4 1/2	4 1/2
2 PLY MEMBRANE WATERPROOFING	S.F.	---	48	48	96
1/2" ALUMINUM OR ZINC PLATE	S.F.	5	---	---	5

\* 2-55'-0" LONG TEST PILES REQUIRED. DRIVE ONE UNTREATED TIMBER TEST PILE AT EACH ABUTMENT.

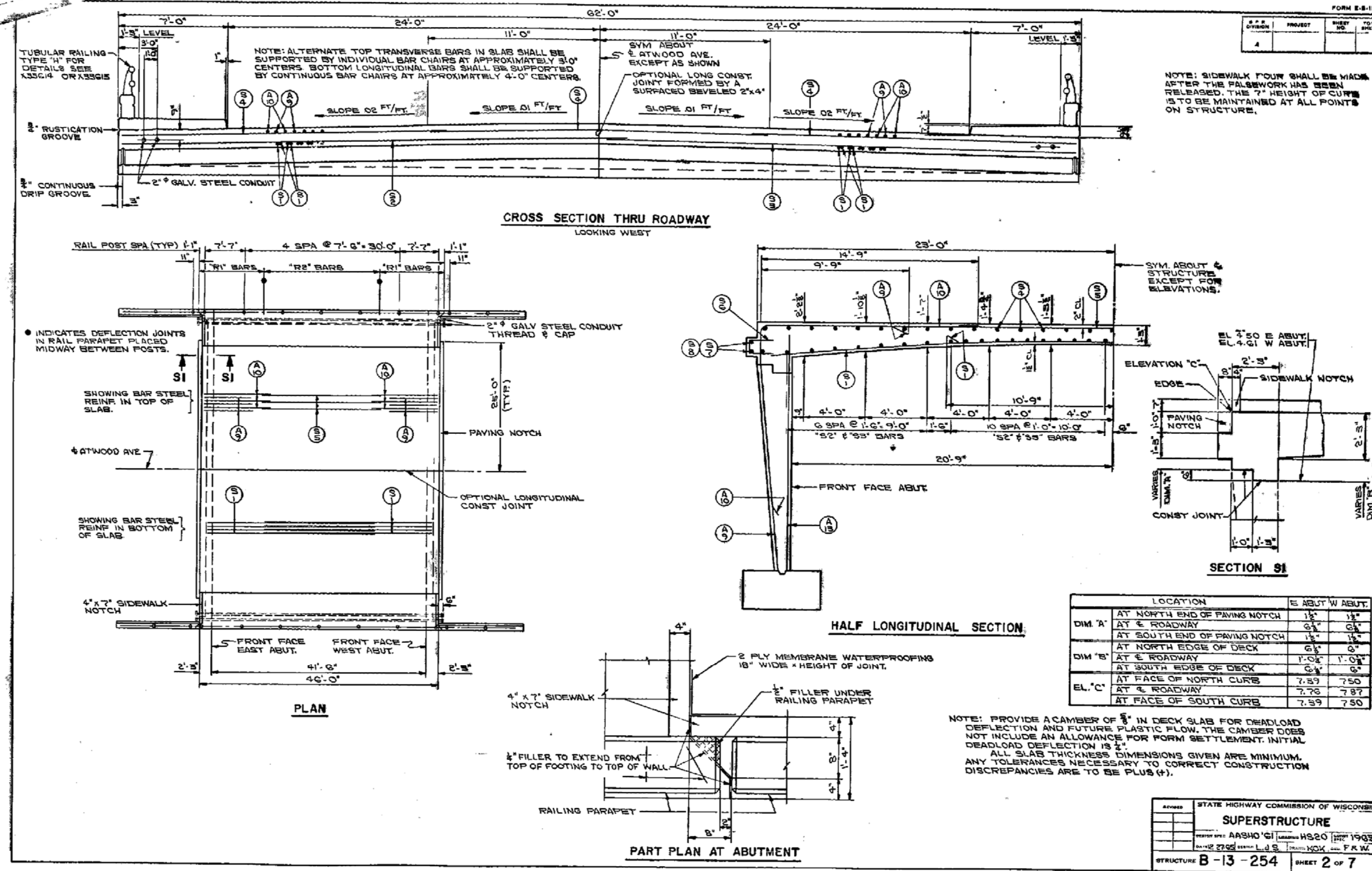


## PLAN

15 SPAN R.C. FRAME

X33612

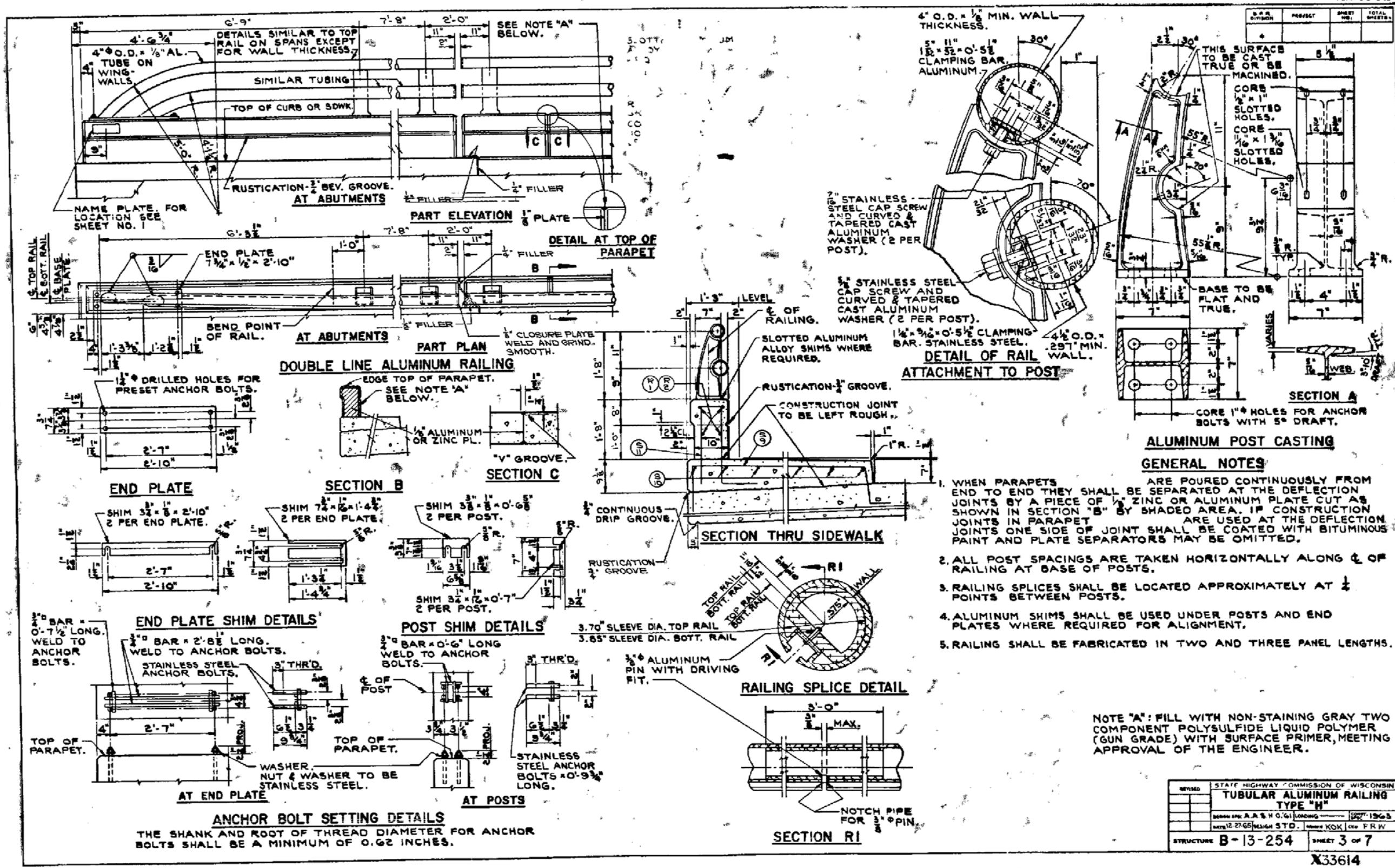
14-JUL-1998 09:23



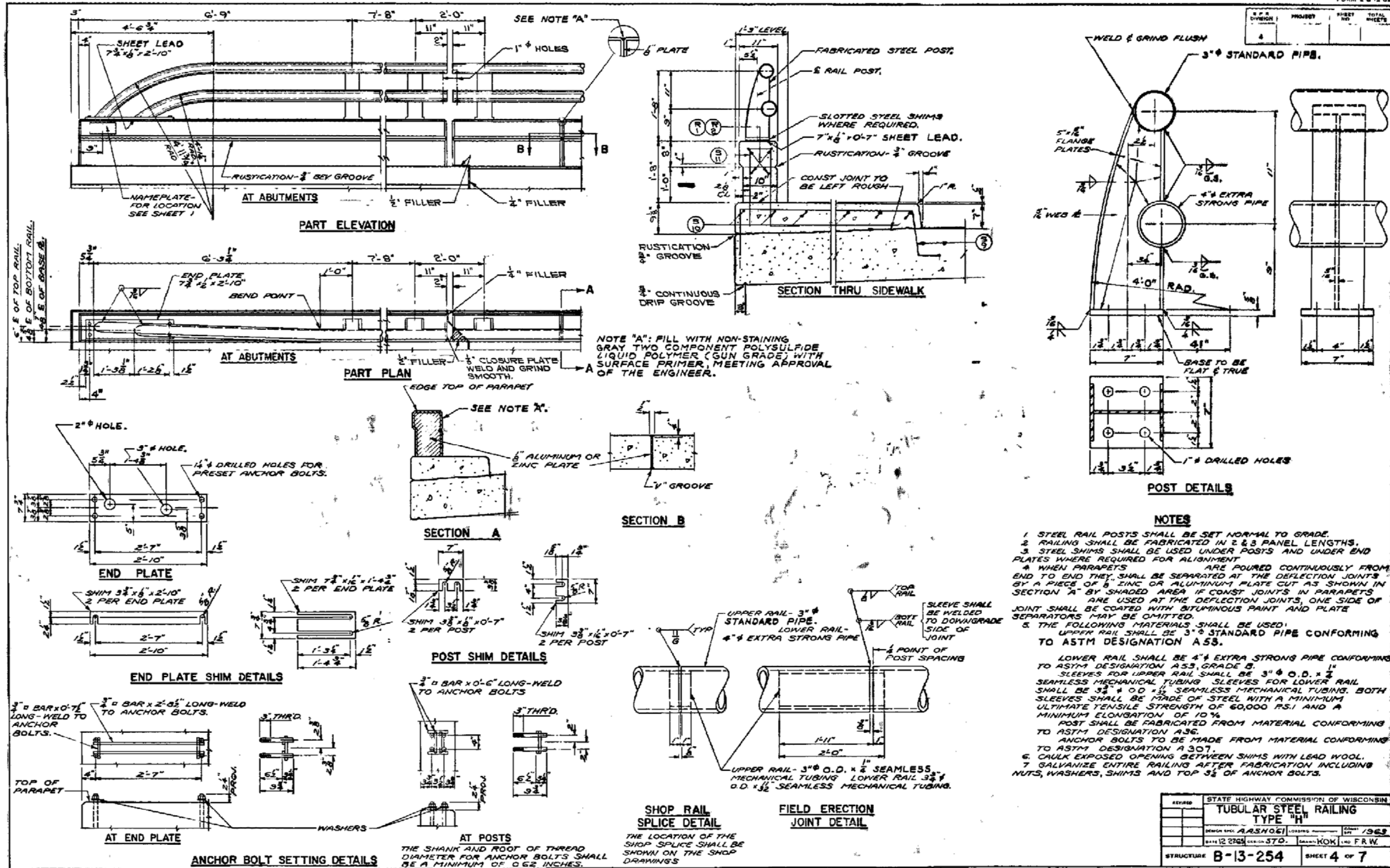
A33613

SCREENSCAN











DATE	PROJECT	SHEET NO.	TOTAL SHEETS
4			

# SUBSURFACE EXPLORATION FOR FOUNDATION DESIGN

FOR THE DESIGN OF THE STRUCTURE FOUNDATION, TO OBTAIN RELATIVE DATA CONCERNING THE CHARACTER OF MATERIAL IN AND UPON WHICH THE FOUNDATION MIGHT BE BUILT, BORINGS AND/OR SOUNDINGS WERE MADE AT POINTS APPROXIMATELY AS INDICATED ON THIS DRAWING WITH THE LOG OF SUCH EXPLORATION DATA AS INTERPRETED FOR SUCH DESIGN PURPOSE AS SHOWN. THE EXPLORATIONS WERE MADE BY ORDINARY AND CONVENTIONAL METHODS AND ARE DEEMED ADEQUATE FOR SUCH PURPOSE HOWEVER, SINCE IT IS A MATTER OF COMMON KNOWLEDGE THAT THE EXACT CHARACTER OF ANY MATERIAL AND ITS REACTION IS DIFFICULT TO DETERMINE FROM SUCH SUBSURFACE EXPLORATION AND THAT THE KIND AND CHARACTER OF MATERIAL AT THE SITE WHERE THE FOUNDATIONS ARE BUILT MAY VARY SUBSTANTIALLY FROM THAT INDICATED BY THE LOGS THEY ARE MADE AVAILABLE TO THE BIDDERS SIMPLY FOR WHAT THEY ARE WORTH, WITHOUT ANY WARRANTY, EXPRESSED OR IMPLIED THAT THE MATERIAL TO BE ENCOUNTERED IN BUILDING THE FOUNDATION WILL CONFORM THEREWITH. IF THE LOG IS USED BY THE CONTRACTOR IN MAKING HIS BID, IT IS HEREBY EXPRESSLY STIPULATED THAT THE COMMISSION ACCEPTS NO RESPONSIBILITY FOR SAID USE.

UNLESS OTHERWISE SPECIFIED THE BLOWS PER FOOT AT THE LOCATIONS INDICATED ARE BASED ON DRIVING A 2" O.D. x 1.4" I.D. SPLIT SPOON SAMPLER WITH A 140 LB. HAMMER HAVING A FREE FALL OF 30". THE BLOW COUNT IS TAKEN IN UNDISTURBED SOIL IMMEDIATELY BELOW A CAGED OR OPEN HOLE ELIMINATING SIDE FRICTION ON THE DRIVE PIPE.

## LEGEND OF PROBING

ELEV. STA. PROBE #

7 AVERAGE BLOWS PER FT.

REFUSAL 95/6

95/6 = 95 BLOWS FOR 6" PENETRATION  
PROBING TAKEN WITH A 350# WT.  
FALLING 18" ON A 2" O.D. POINT

## LEGEND OF BORING

ELEV. STA. BORING #

UNCONFINED  
STRENGTH  
BLOWS PER FT.  
USING 140# WT.  
FALLING 30"

WASH SAMPLE

SHELBY TUBE

GROUND WATER

ELEVATION

NO GROUND WATER  
OBSERVED ABOVE  
THIS ELEVATION

DESCRIPTION OF  
MATERIAL

BOULDERS OR  
COBBLES

MATERIAL CHANGE

STATE HIGHWAY COMMISSION OF WISCONSIN

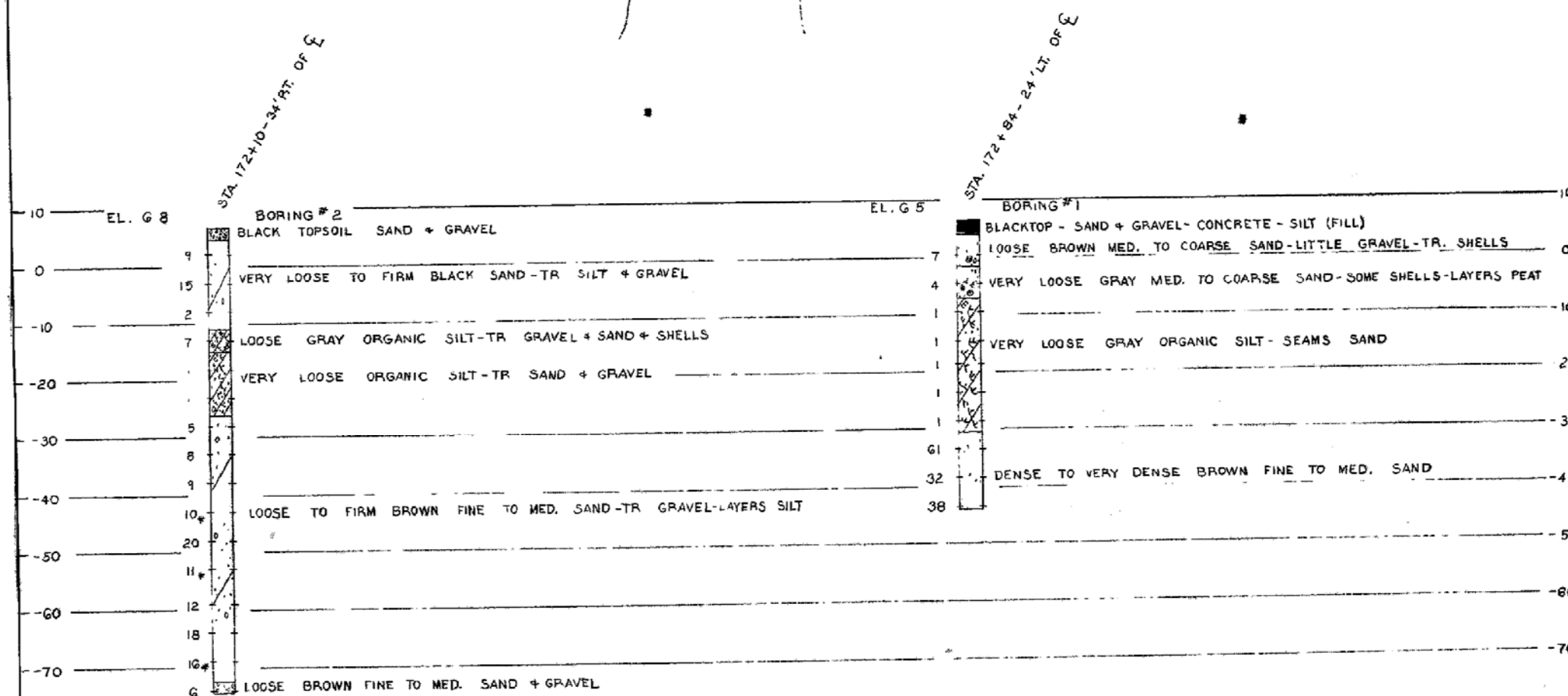
SUBSURFACE EXPLORATION

DESIGN SPEC. LOCATION

DATE 12-1-95 CHECKED DRAWN

STRUCTURE B-13-254 SHEET 7 OF 7

X33617A





STATE OF WISCONSIN  
DEPARTMENT OF TRANSPORTATION

Inspection Report for  
**B-13-254**

**ATWOOD AVE over STARKWEATHER CREEK**  
Oct 26, 2018



Type	Prior	Frequency (mos)	Performed
Routine	10-28-16	24	X
SIA Review	10-28-16	48	

Start Coordinates		End Coordinates (optional)	
Latitude	43°05'27.70"N	Latitude	
Longitude	89°20'03.20"W	Longitude	
Owner	CITY	Maintainer	CITY

**Time Log**

**Team members**

Hours	Minutes	
0	35	Steve Sonntag

Inspector	Name	Number	Signature	Signature Date
	Yoerger, Glen E	1521	<i>Glen E Yoerger</i> E-signed by Glen E Yoerger(engey)	12-06-18



**BRIDGE INSPECTION REPORT**  
**Wisconsin Department of Transportation**  
**DT2007 2003 s.84.17 Wis. Stats.**

page 2

**Identification & Location**

Feature On: ATWOOD AVE	Section Town Range: S08 T07N R10E	Structure Number: <b>B-13-254</b>
Feature Under: STARKWEATHER CREEK	County: DANE	
Location 1.0M S JCT USH 151	Municipality: MADISON	Structure Name:

**Geometry**

measurements in feet, except where noted

Approach Roadway Width: 48	Bridge Roadway Width: 48.0	Total Length: 47.0
Approach Pavement Width: 48	Deck Width: 61.9	Deck Area (sq ft): 2909

**Traffic**

Lanes	ADT	ADT year	Traffic Pattern
On 4	16392	2015	TWO WAY TRAFFIC

**Capacity**

**Load Rating**

Inventory rating: HS19	Overburden depth (in): 0.3	Last rating date: 07-31-18	Controlling:
Operating rating: HS33	Deck surface material: EPOXY OVERLAY	Re-rate for capacity (Y/N):	Control location:
Posting:	Re-rate notes:		

**Hydraulic**

**Classification**

Scour Critical Code(113): (8) STABLE-ABOVE TOP FOOTING	Q100 (ft3/sec): 0	
High water elevation (ft): 0.0	Velocity (ft/sec): 0.0	Sufficiency #: 64.7

**Span(s)**

Span #	Material	Configuration	Depth (in)	Length (ft)	Main
1	CONCRETE	RIGID FRAME		45.0	Y

**Expansion joint(s)**

**Temperature:**

File:	New:
-------	------

**Clearance**

Item	File Measurement (ft)	File Date	New Measurement (ft)
Highway Min Vertical On Cardinal			
Horizontal On Cardinal			

**Construction History**

Year	Work Performed	FOS id
2017	OVERLAY - POLYMER	
1965	NEW STRUCTURE	

**Elements**

Chk	Element	Defect	Description	UOM	Total	Quantity in Condition State			
						1	2	3	4
X	38		<b>Reinforced Concrete Slab</b>	SF	2,909	0	2,604	305	0
		1080	Delamination - Spall - Patched Area 2 wide cracks mid span with delamination on underside - <b>Patched in 2017</b>	SF		0	0	55	0
		1130	Cracking (RC) <b>Narrow and Medium Cracking Throughout. Thin Polymer Overlay installed 2017. Cracks on underside also repaired in 2017.</b>	SF		0	2,604	250	0
	8513		Thin Polymer Overlay <b>Added in 2017.</b>	SF	2,909	2,909	0	0	0

**BRIDGE INSPECTION REPORT**  
**Wisconsin Department of Transportation**  
**DT2007 2003 s.84.17 Wis. Stats.**

page 3

Structure No.: **B-13-254**

X	215		Reinforced Concrete Abutment	LF	120	95	20	5	0
		1080	Delamination - Spall - Patched Area <b>1' x 2' Spall south side of East Abutment.</b>	LF		0	0	2	0
		1130	Cracking (RC) <b>Narrow to Wide Cracks.</b>	LF		0	20	5	0
X	331		Reinforced Concrete Bridge Rail	LF	158	0	158	0	0
		1080	Delamination - Spall - Patched Area <b>Patched Spalls are sound.</b>	LF		0	15	0	0
		1130	Cracking (RC) narrow cracking throughout	LF		0	158	0	0
X	8400		Integral Wingwall	EA	4	4	0	0	0

**Assessments**

Chk	Element	Defect	Description	UOM	Total	Quantity in Condition State			
						1	2	3	4
X	9009		Sidewalk <b>Patched South Side in 2017.</b>	EA	2	0	1	1	0
X	9011		Utilities Electrical	EA	1	1	0	0	0
X	9322		Approach Roadway - Concrete (non-structural) slight spalling of both approach slabs where it meets deck. <b>Patched in 2017.</b>	EA	2	0	2	0	0
X	9335		Decorative Rail Aluminum rail on top of concrete rail	EA	2	2	0	0	0

**NBI Ratings**

	File	New
Deck	5	5
Superstructure	5	5
Substructure	5	5
Culvert	N	N
Channel	8	8
Waterway	8	8



**Structure Specific Notes**

**Inspection Specific Notes**

**Inspector Site-Specific Safety Considerations**

**BRIDGE INSPECTION REPORT**  
**Wisconsin Department of Transportation**  
**DT2007 2003 s.84.17 Wis. Stats.**

page 4

Structure No.: **B-13-254**

**Structure Inspection Procedures**

**Special Requirements**

Chk	Hours	Cost	Comments
-----	-------	------	----------

**Underwater Probe Form  
B-13-254**

**General Site Conditions - Scour**

no problems

**General Site Conditions - Embankment Erosion/Conditions**

**Substructure Notes**

Chk	Unit	Max Water Depth(ft)	Mode	Notes
X	Cardinal	4.5	Wade	used a boat
X	Non Cardinal	4.5	Wade	used a boat



**Routine**

**Document Comment/Description**

spall underside westerly side



**Routine**  
**Document Comment/Description**

Spall east abutment



**Routine**

**Document Comment/Description**

wide crack west abutment





**Routine**

**Document Comment/Description**

mid span spall on underside





**Routine**

**Document Comment/Description**

underside spall easterly side



**Routine**

**Document Comment/Description**

wide crack east abutment



**Routine**  
**Document Comment/Description**

Overlay and Sidewalk repair, south side.



Routine  
Document Comment/Description

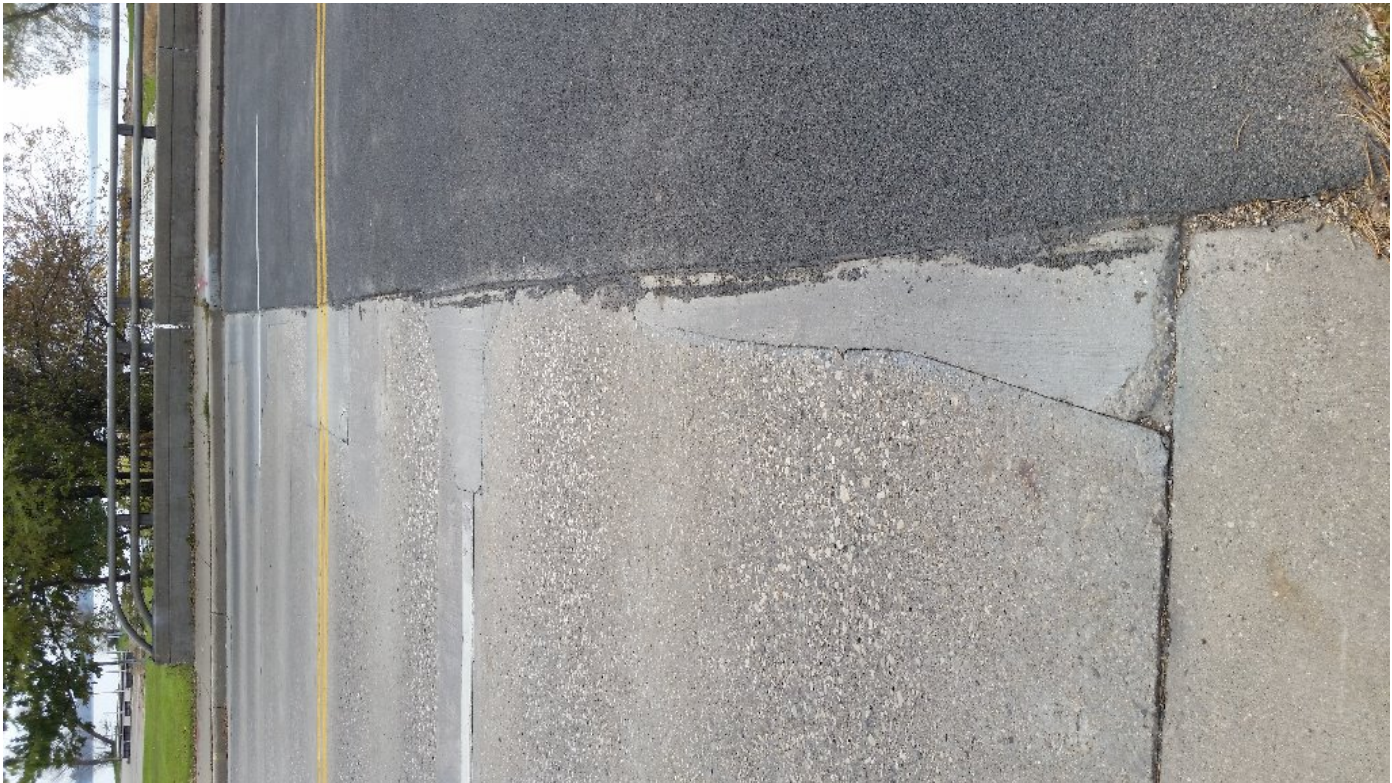
West Approach Spall Repairs





Routine  
Document Comment/Description

East Approach



Routine  
Document Comment/Description

Patch, SW Corner





**Routine**  
**Document Comment/Description**  
North Side Curb Repair

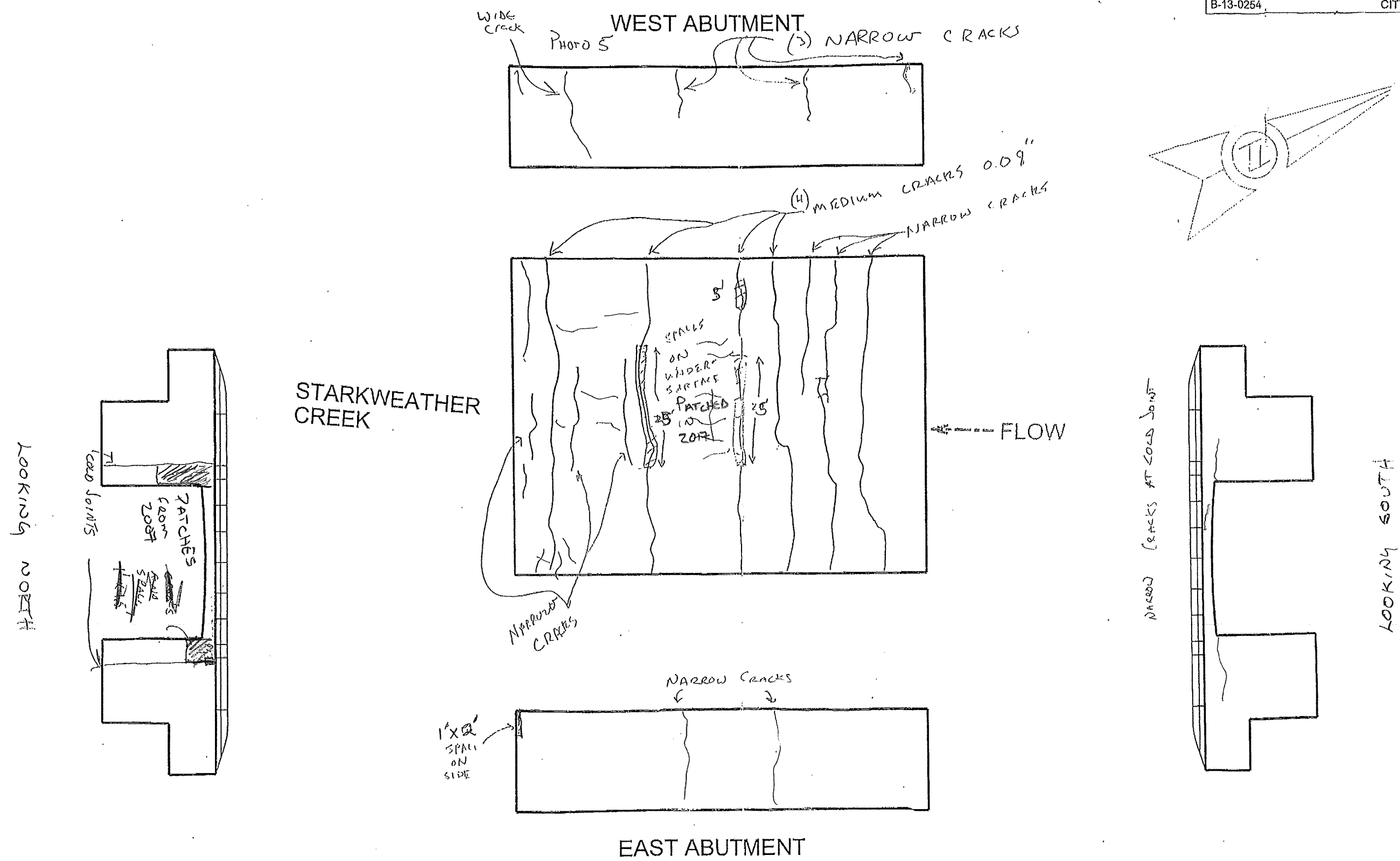


Non-Image Documents

Type	Document	Document Comment/Description	Attached
Routine	b13-254_18_Rd2.pdf	Drawing	X



This page intentionally left blank



PLOT SCALE: \_\_\_\_\_

PLOT NAME: \_\_\_\_\_

REV. DATE: \_\_\_\_\_

2 MADISON STREETS DIVISION

ORIGINATOR: \_\_\_\_\_