

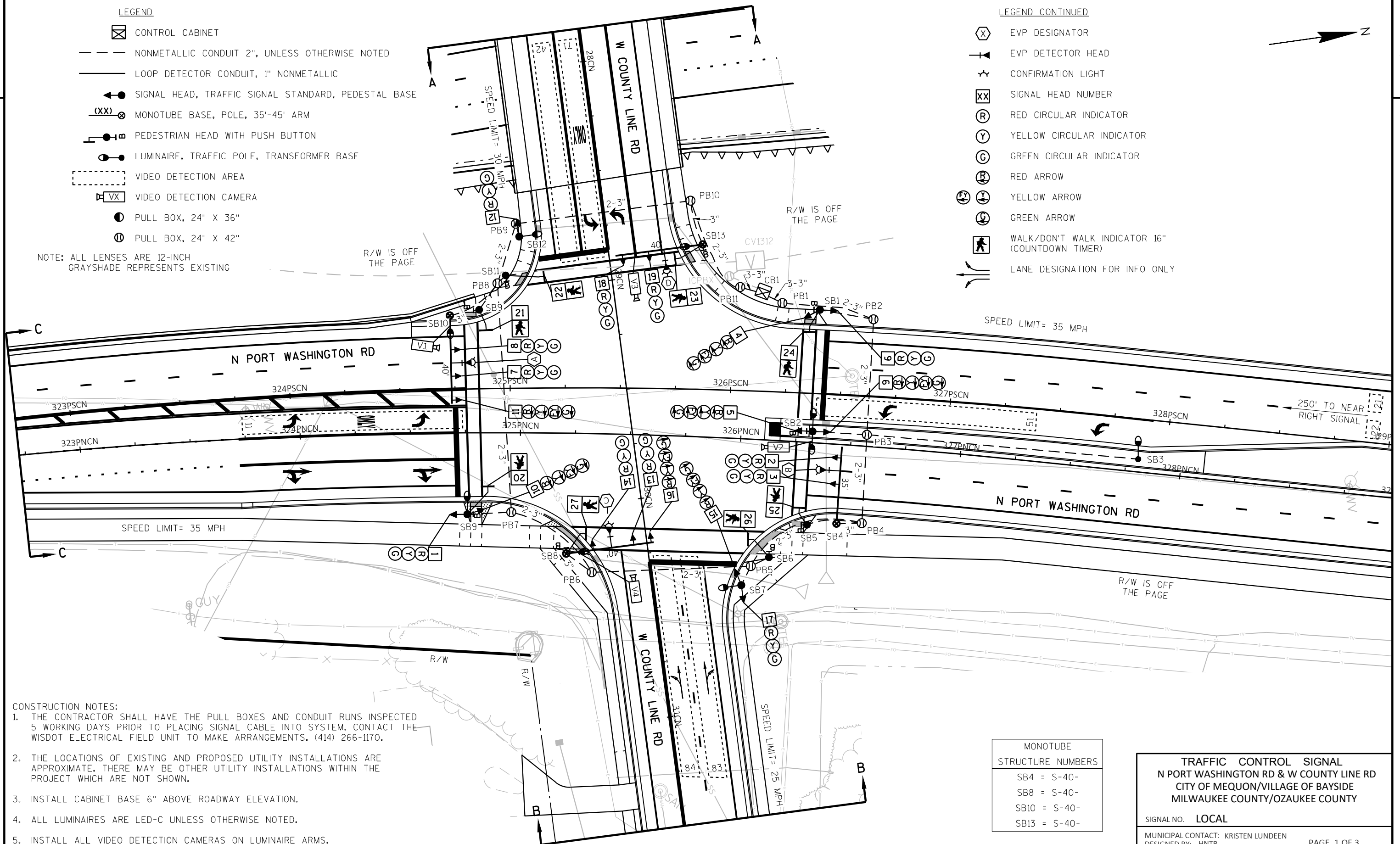
## LEGEND

- ☒ CONTROL CABINET
- NONMETALLIC CONDUIT 2", UNLESS OTHERWISE NOTED
- LOOP DETECTOR CONDUIT, 1" NONMETALLIC
- ◀● SIGNAL HEAD, TRAFFIC SIGNAL STANDARD, PEDESTAL BASE
- (XX) ⊗ MONOTUBE BASE, POLE, 35'-45' ARM
- ⊥● PEDESTRIAN HEAD WITH PUSH BUTTON
- LUMINAIRE, TRAFFIC POLE, TRANSFORMER BASE
- VIDEO DETECTION AREA
- ⊥VX VIDEO DETECTION CAMERA
- PULL BOX, 24" X 36"
- ⊖ PULL BOX, 24" X 42"

NOTE: ALL LENSES ARE 12-INCH  
GRAYSHADE REPRESENTS EXISTING

## LEGEND CONTINUED

- ⊗ EVP DESIGNATOR
- ▶ EVP DETECTOR HEAD
- ★ CONFIRMATION LIGHT
- ⊗ XX SIGNAL HEAD NUMBER
- ⊖ R RED CIRCULAR INDICATOR
- ⊖ Y YELLOW CIRCULAR INDICATOR
- ⊖ G GREEN CIRCULAR INDICATOR
- ⊖ R RED ARROW
- ⊖ Y YELLOW ARROW
- ⊖ G GREEN ARROW
- ⊖ WALK/DON'T WALK INDICATOR 16"  
(COUNTDOWN TIMER)
- LANE DESIGNATION FOR INFO ONLY



## CONSTRUCTION NOTES:

1. THE CONTRACTOR SHALL HAVE THE PULL BOXES AND CONDUIT RUNS INSPECTED 5 WORKING DAYS PRIOR TO PLACING SIGNAL CABLE INTO SYSTEM. CONTACT THE WISDOT ELECTRICAL FIELD UNIT TO MAKE ARRANGEMENTS. (414) 266-1170.
2. THE LOCATIONS OF EXISTING AND PROPOSED UTILITY INSTALLATIONS ARE APPROXIMATE. THERE MAY BE OTHER UTILITY INSTALLATIONS WITHIN THE PROJECT WHICH ARE NOT SHOWN.
3. INSTALL CABINET BASE 6" ABOVE ROADWAY ELEVATION.
4. ALL LUMINAIRES ARE LED-C UNLESS OTHERWISE NOTED.
5. INSTALL ALL VIDEO DETECTION CAMERAS ON LUMINAIRE ARMS.

MONOTUBE STRUCTURE NUMBERS	
SB4	= S-40-
SB8	= S-40-
SB10	= S-40-
SB13	= S-40-

TRAFFIC CONTROL SIGNAL  
N PORT WASHINGTON RD & W COUNTY LINE RD  
CITY OF MEQUON/VILLAGE OF BAYSIDE  
MILWAUKEE COUNTY/OZAUKEE COUNTY

SIGNAL NO. LOCAL

MUNICIPAL CONTACT: KRISTEN LUNDEEN

DESIGNED BY: HNTB

REVISED BY:

PAGE 1 OF 3

PROJECT NO: 1229-04-74

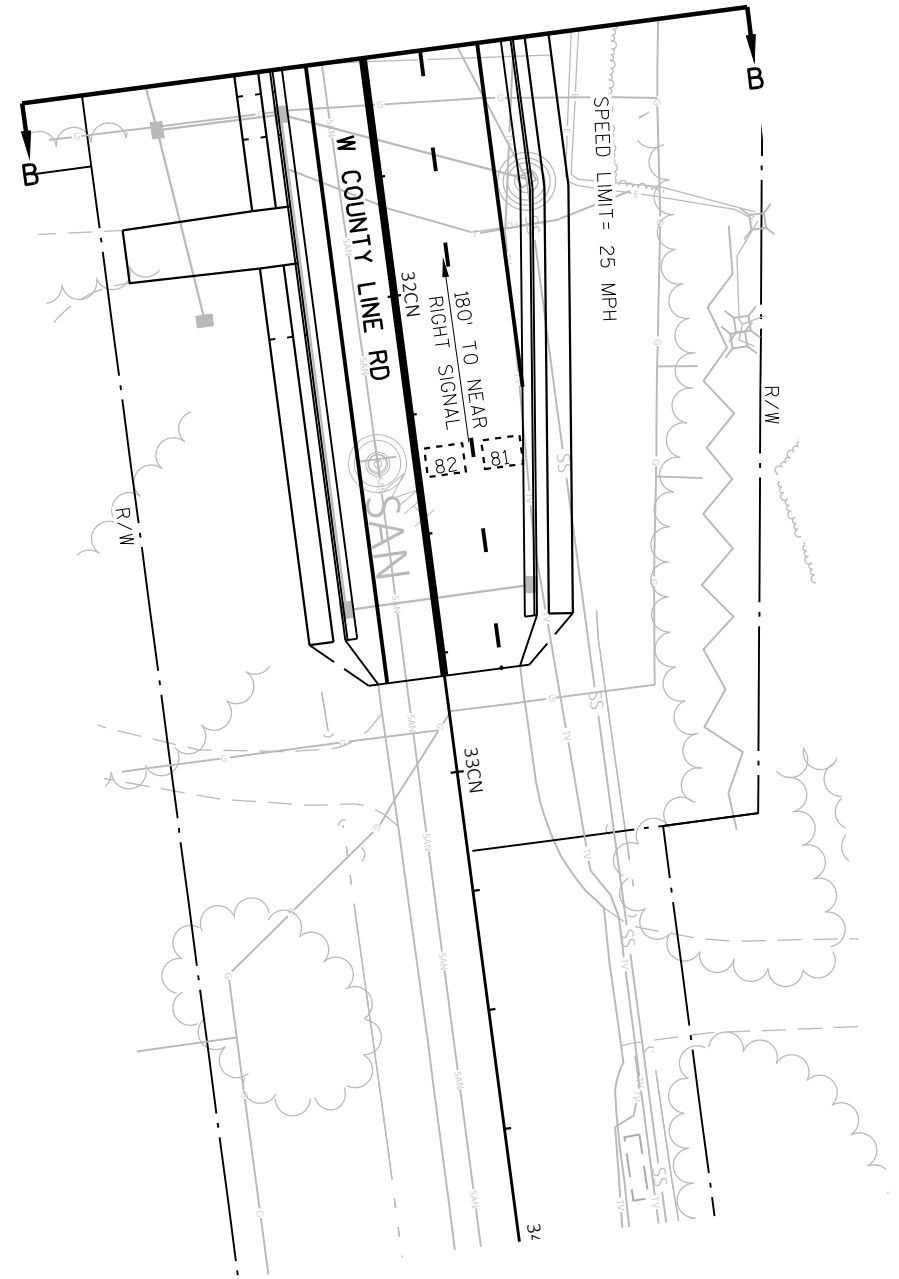
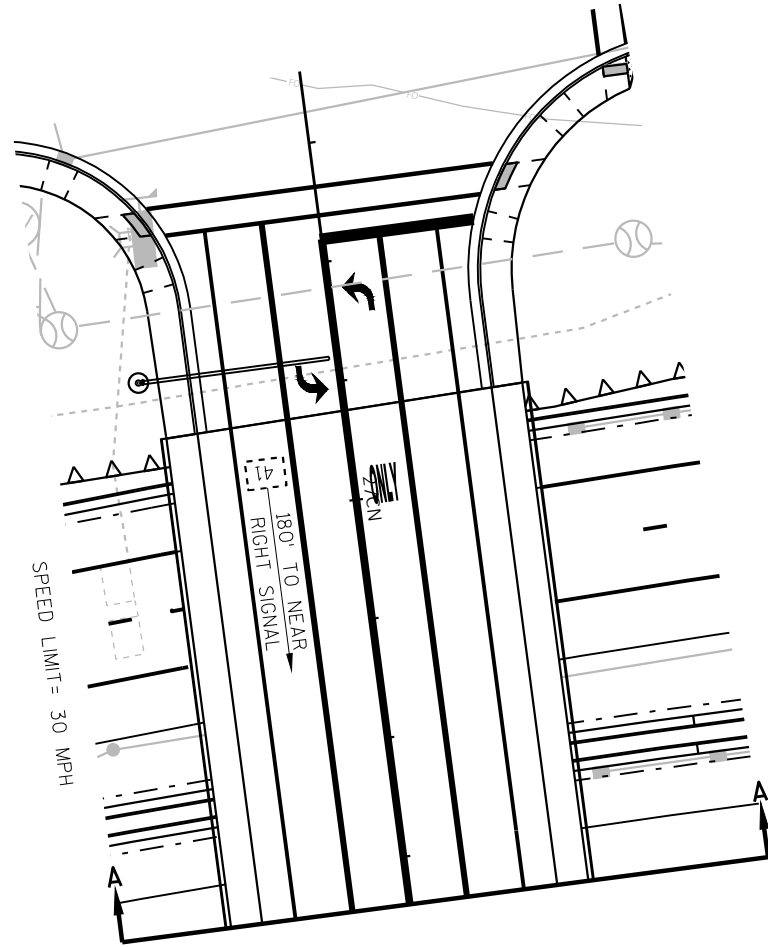
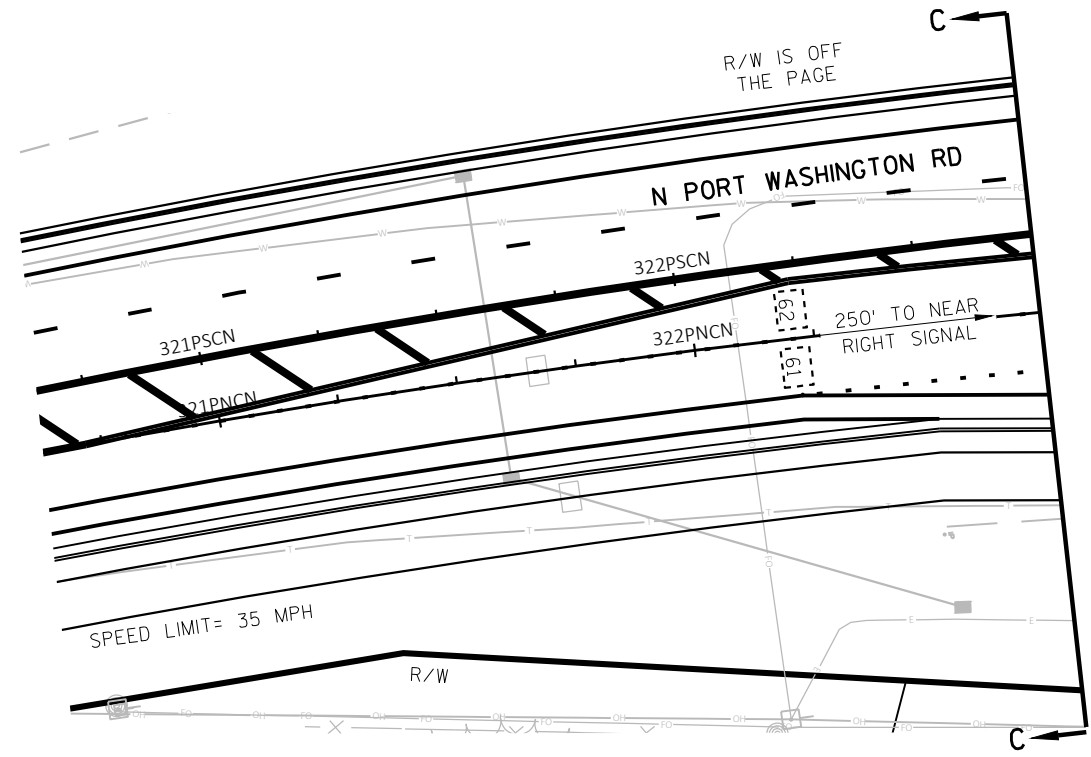
HWY: IH 43

COUNTY: MILWAUKEE/OZAUKEE

TRAFFIC SIGNAL PLAN

SHEET

E



TRAFFIC CONTROL SIGNAL  
N PORT WASHINGTON RD & W COUNTY LINE RD  
CITY OF MEQUON/VILLAGE OF BAYSIDE  
MILWAUKEE COUNTY/OZAUKEE COUNTY

SIGNAL NO. LOCAL

MUNICIPAL CONTACT: KRISTEN LUNDEEN  
DESIGNED BY: HNTB  
REVISED BY:

PAGE 2 OF 3

PROJECT NO: 1229-04-74

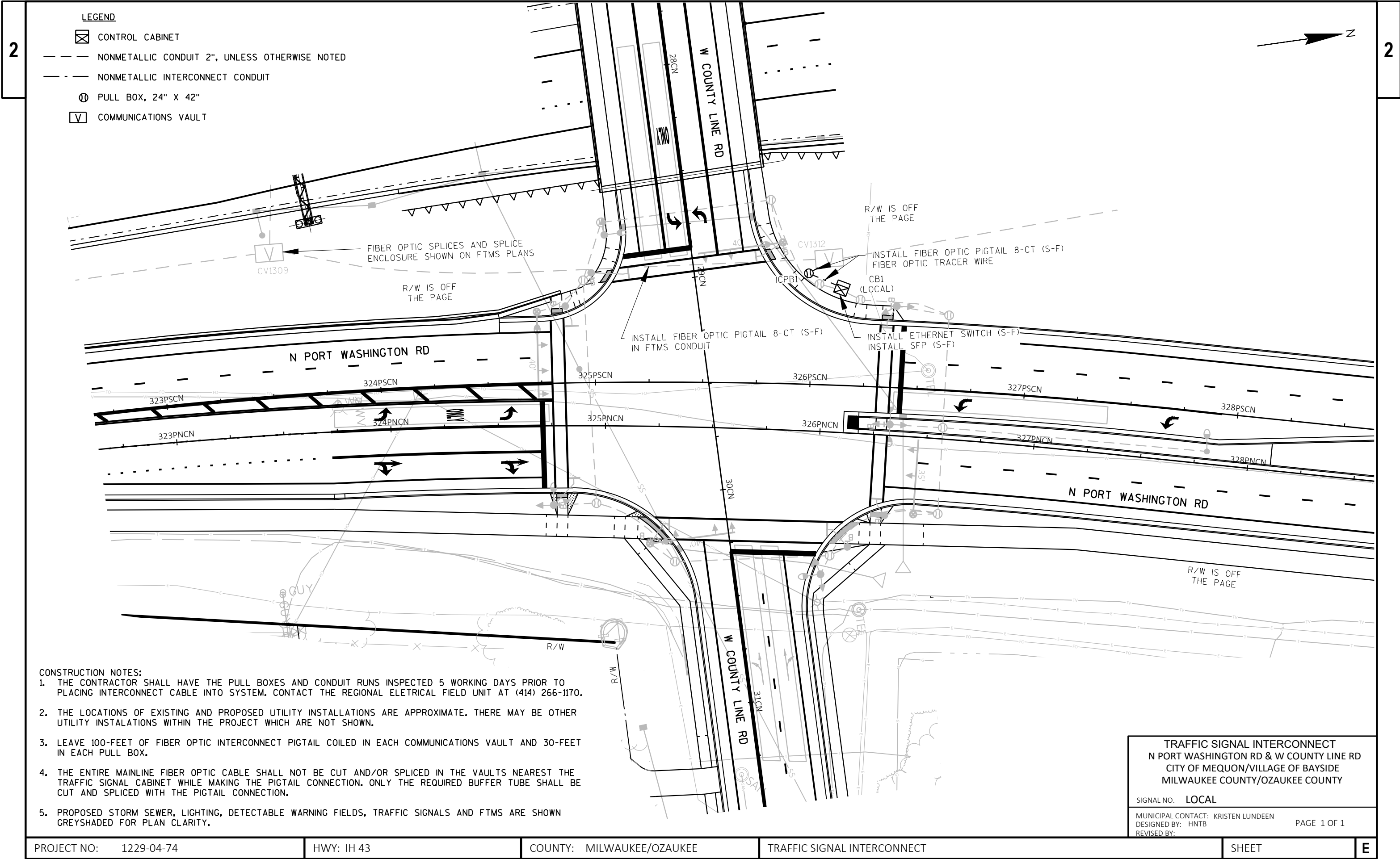
HWY: IH 43

COUNTY: MILWAUKEE/OZAUKEE

TRAFFIC SIGNAL PLAN

SHEET

E



LEGEND

- CONTROL CABINET
- NONMETALLIC CONDUIT 2", UNLESS OTHERWISE NOTED
- NONMETALLIC INTERCONNECT CONDUIT
- PULL BOX, 24" X 42"
- COMMUNICATIONS VAULT

- CONSTRUCTION NOTES:
1. THE CONTRACTOR SHALL HAVE THE PULL BOXES AND CONDUIT RUNS INSPECTED 5 WORKING DAYS PRIOR TO PLACING INTERCONNECT CABLE INTO SYSTEM. CONTACT THE REGIONAL ELECTRICAL FIELD UNIT AT (414) 266-1170.
  2. THE LOCATIONS OF EXISTING AND PROPOSED UTILITY INSTALLATIONS ARE APPROXIMATE. THERE MAY BE OTHER UTILITY INSTALLATIONS WITHIN THE PROJECT WHICH ARE NOT SHOWN.
  3. LEAVE 100-FEET OF FIBER OPTIC INTERCONNECT PIGTAIL COILED IN EACH COMMUNICATIONS VAULT AND 30-FEET IN EACH PULL BOX.
  4. THE ENTIRE MAINLINE FIBER OPTIC CABLE SHALL NOT BE CUT AND/OR SPLICED IN THE VAULTS NEAREST THE TRAFFIC SIGNAL CABINET WHILE MAKING THE PIGTAIL CONNECTION. ONLY THE REQUIRED BUFFER TUBE SHALL BE CUT AND SPLICED WITH THE PIGTAIL CONNECTION.
  5. PROPOSED STORM SEWER, LIGHTING, DETECTABLE WARNING FIELDS, TRAFFIC SIGNALS AND FTMS ARE SHOWN GREYSHADED FOR PLAN CLARITY.

TRAFFIC SIGNAL INTERCONNECT  
N PORT WASHINGTON RD & W COUNTY LINE RD  
CITY OF MEQUON/VILLAGE OF BAYSIDE  
MILWAUKEE COUNTY/OZAUKEE COUNTY

SIGNAL NO. LOCAL

MUNICIPAL CONTACT: KRISTEN LUNDEEN  
DESIGNED BY: HNTB  
REVISED BY:

PAGE 1 OF 1