

Wisconsin Department of Transportation

Division of Transportation System Development (DTSD)

2018 SE Region Tribal Outreach Meeting

SE Region Office
141 NW Barstow St.
Waukesha, WI 53188

May 23, 2018



Welcome

Dewayne Johnson

Introductions, Meeting Goals and Overview

Liz Callin

Meeting Goals

- Get to know each other in order to better coordinate and collaborate
- Share updates related to projects surrounding the Foxconn development in Racine County
- Discuss current and upcoming transportation improvement projects in the region
- Review Native American labor utilization for region projects
- Discuss where tribal involvement occurs within the life of a project
- Have an open discussion and understand opportunities for improved engagement with tribes
- Other?

Meeting Overview

1. Central Office Overview

Kelly Jackson

2. Overview of Region and Organizational Structure

Andrew Levy

3. Life of a Project with Tribal Involvement

Tim McElmeel

4. Surplus Land Sales and Tribal Involvement

Denise Waheed

5. Foxconn Updates incl. I-94 N-S and Development Roads

Brett Wallace

Meeting Overview

BREAK

6. SE Region 6-year Program Overview

Cindy Flower

7. Project Updates (projects with tribal involvement)

Kathy Kramer and Joan Bonack

8. Tribal Labor Advisory Committee Update + Labor Utilization

Cyless Peterson and Liz Callin

9. Open Discussion

ALL

Other items to discuss?

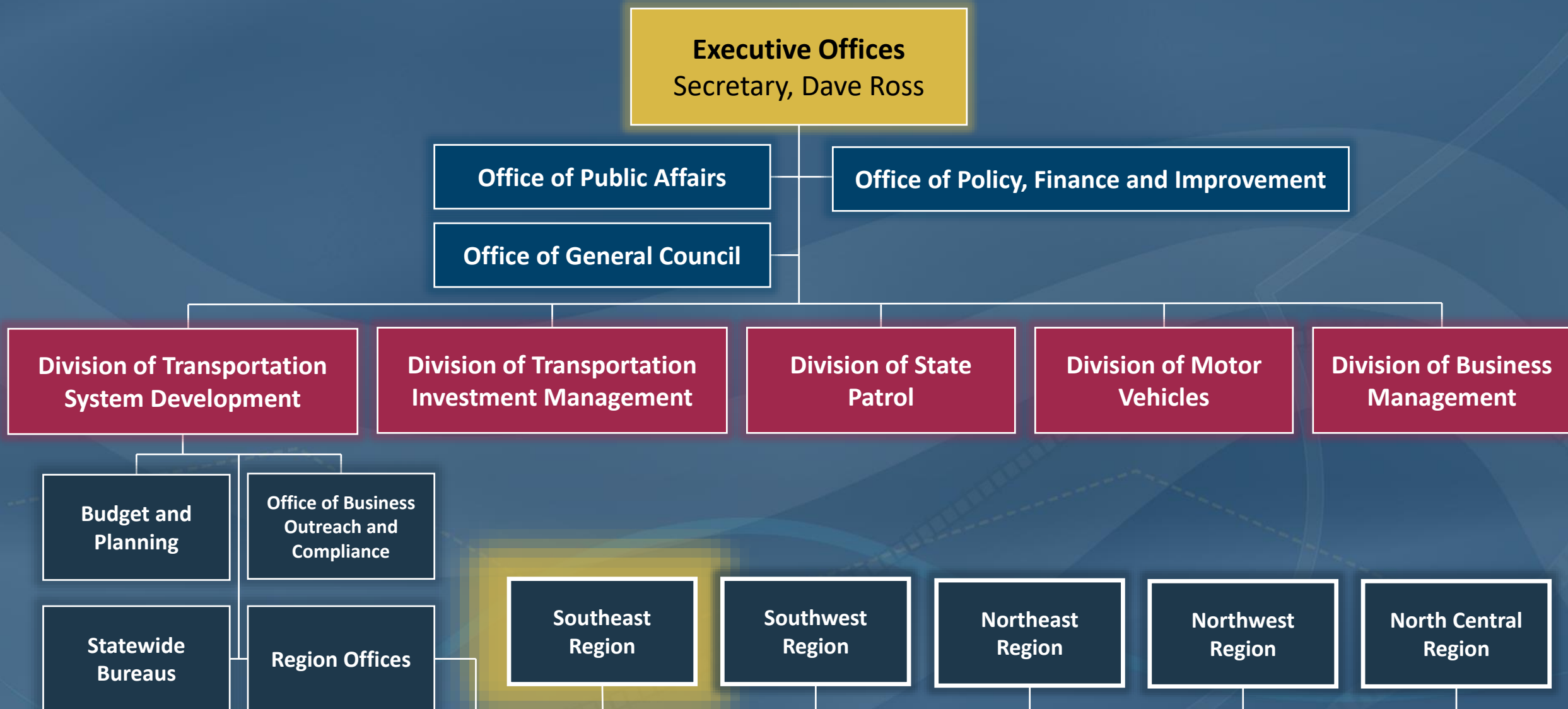
Central Office Tribal Affairs Overview & Partnership Agreement Updates

Kelly Jackson

Overview of Region & Organizational Structure

Andrew Levy

WisDOT Organizational Structure



Southeast Region Overview

***Mission** - Provide leadership in the development and operation of a safe and efficient transportation system.*

- Roughly 320 staff members
- Organized into 5 work units
 - Planning
 - Operations
 - Technical Services
 - Project Development
 - Southeast Freeways

Southeast Region Overview

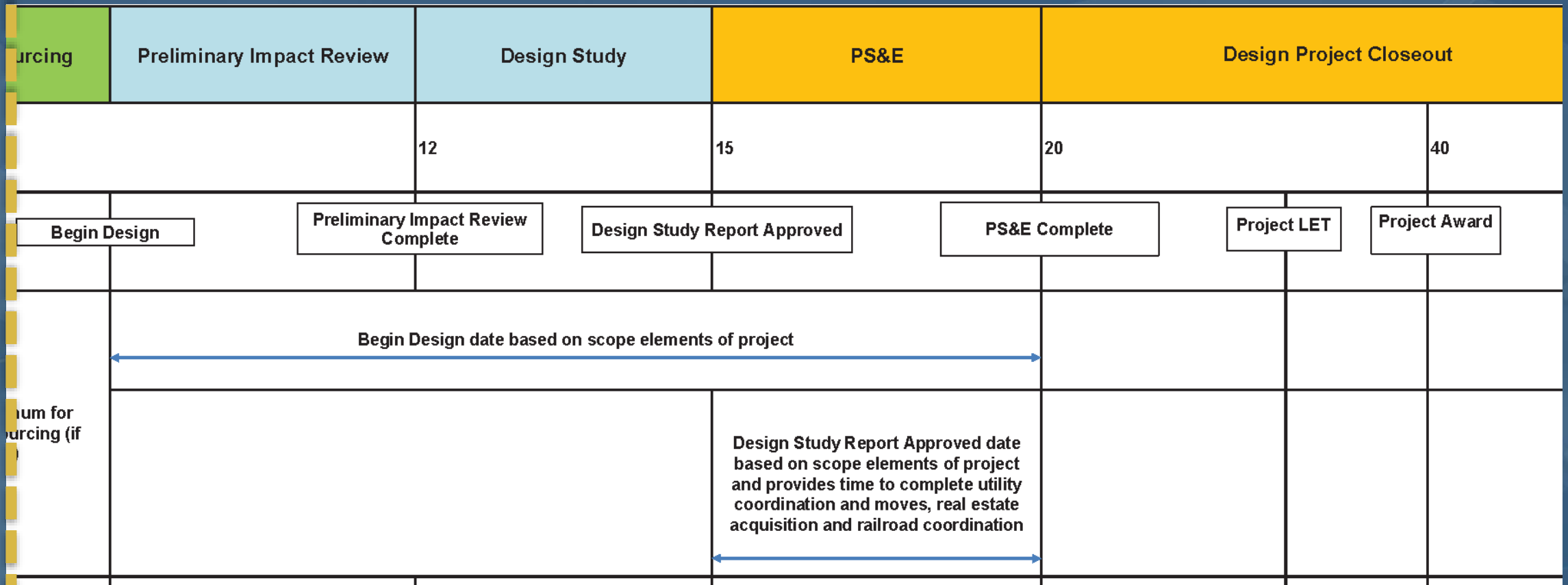
Facilities Development Process

Phase Elements \ Phase Names	Program Development	Project Management Plan		Project Resourcing	Prelim
Life Cycle (Construction ID)	00	10		11	
Milestone		Project Start	Project Management Plan Approved	Begin Design	
Timeline	Varies		Varies	6 months minimum for consultant resourcing (if required)	



Southeast Region Overview

Facilities Development Process



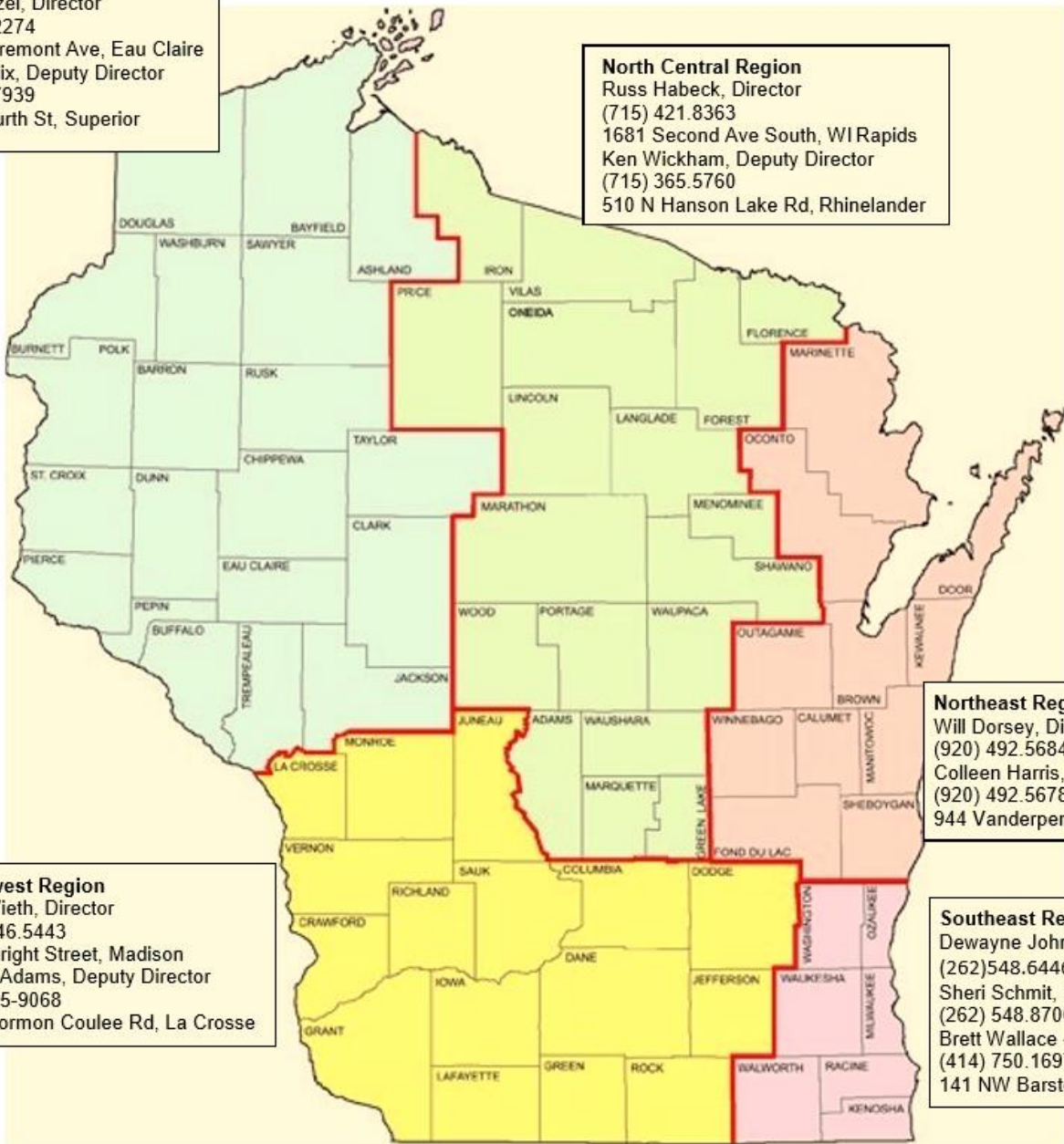
Northwest Region
Jerry Mentzel, Director
(715) 836.2274
718 W Clairemont Ave, Eau Claire
Jessica Felix, Deputy Director
(715) 392.7939
1701 N Fourth St, Superior

North Central Region
Russ Habeck, Director
(715) 421.8363
1681 Second Ave South, WI Rapids
Ken Wickham, Deputy Director
(715) 365.5760
510 N Hanson Lake Rd, Rhinelander

Northeast Region
Will Dorsey, Director
(920) 492.5684
Colleen Harris, Deputy Director
(920) 492.5678
944 Vanderperren Way, Green Bay

Southwest Region
David Vieth, Director
(608) 246.5443
2101 Wright Street, Madison
Angela Adams, Deputy Director
(608)785-9068
3550 Mormon Coulee Rd, La Crosse

Southeast Region
Dewayne Johnson, Director
(262)548.6446
Sheri Schmit, Deputy Director
(262) 548.8700
Brett Wallace - Foxconn / I-94 N-S
(414) 750.1697
141 NW Barstow St, Waukesha

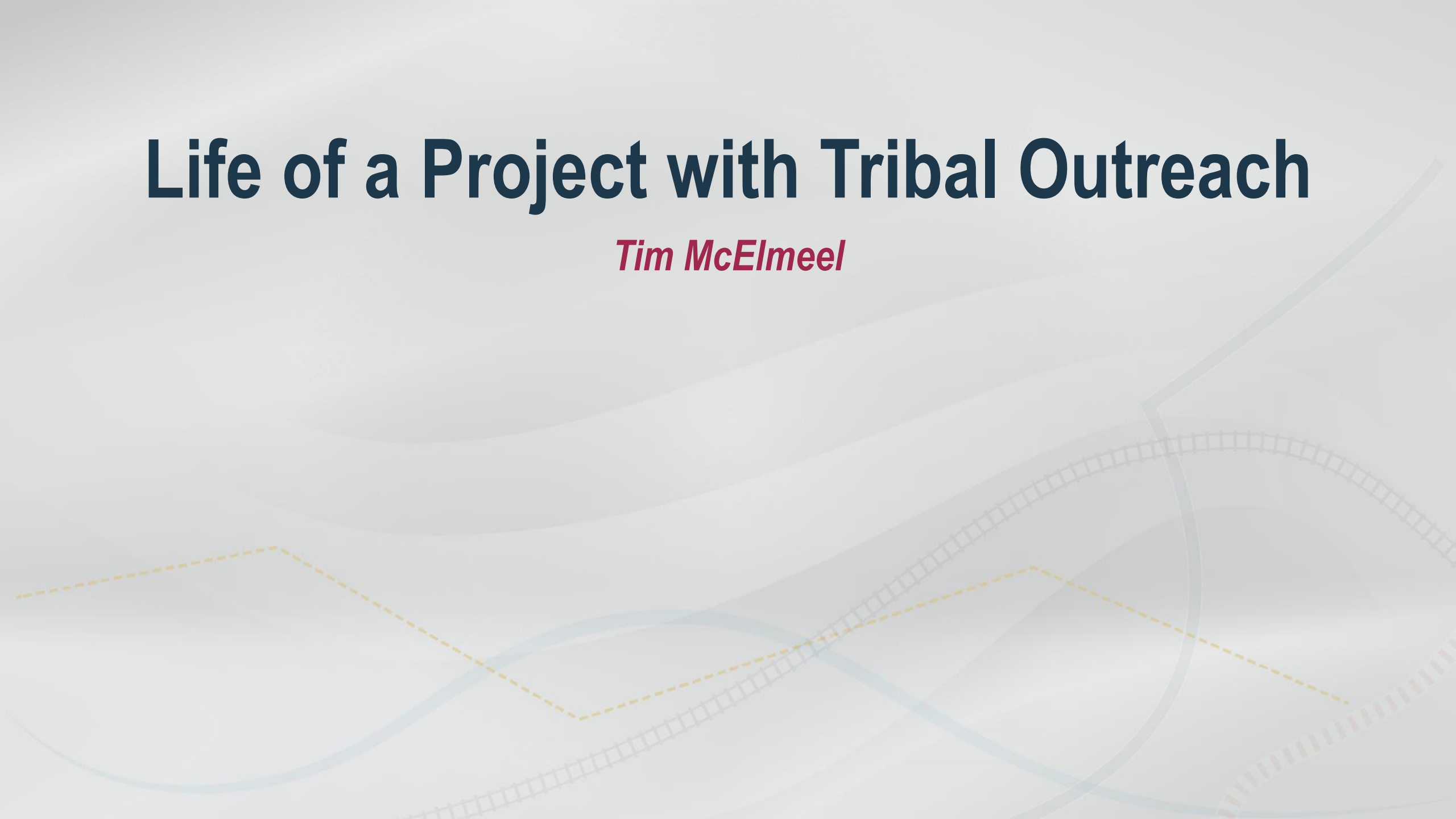


Division of Transportation System Development –

Region Offices Map

Life of a Project with Tribal Outreach

Tim McElmeel

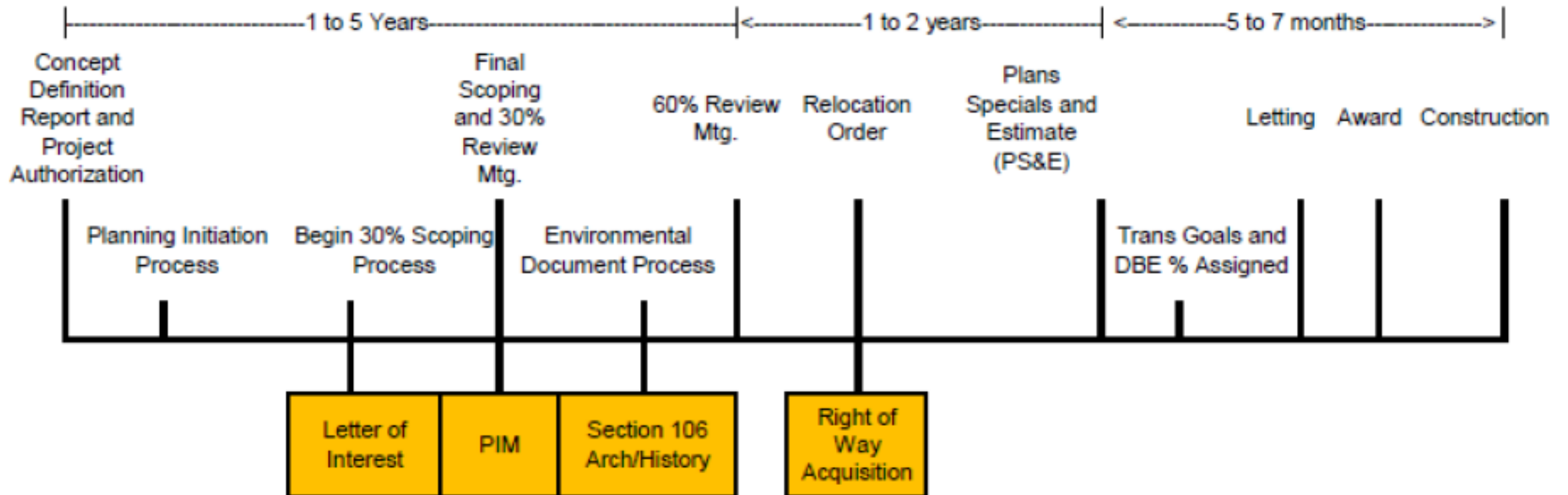


Tribal Involvement Process Goals

1. Make Tribes aware of upcoming WisDOT projects
2. Solicit information related to cultural resources in the area
3. Engage in formal consultation if requested and/or if cultural resources are adversely affected

Life of a Project and Tribal Involvement

Points of Tribal Communications:



The 106 Process and Outcomes

1. Project scope meets criteria in FDM CH 26-5-1
2. No historic properties (Historical or Archeological) in the area of potential effect (APE)
3. No historic properties affected
4. Historic Properties affected:
 - Assess affects and begin consultation on affects **OR**
 - Documentation for determination of no adverse effects (DNAE) is prepared

Assess Affects and Begin Consultation

1. Establish participating parties to the consultation process
2. A Documentation for Consultation Document (D for C) is prepared
3. Consultation meetings take place with participating parties
4. A Memorandum of Agreement (MOA) is typically prepared and signed by participating parties

Feedback and Discussion

Is the process working?

Tribal Involvement in Surplus Land Sales

Denise Waheed

Tribal Involvement in Surplus Land Sales

- A Cultural Resources Review is performed on all land sales
- Each parcel is posted on the BEES Cultural Resources portal
- The portal provides notification to the tribes that WisDOT is selling the parcel

Foxconn Updates

I-94 N-S and Racine County Development Roads

Project Overviews and Updates

Brett Wallace

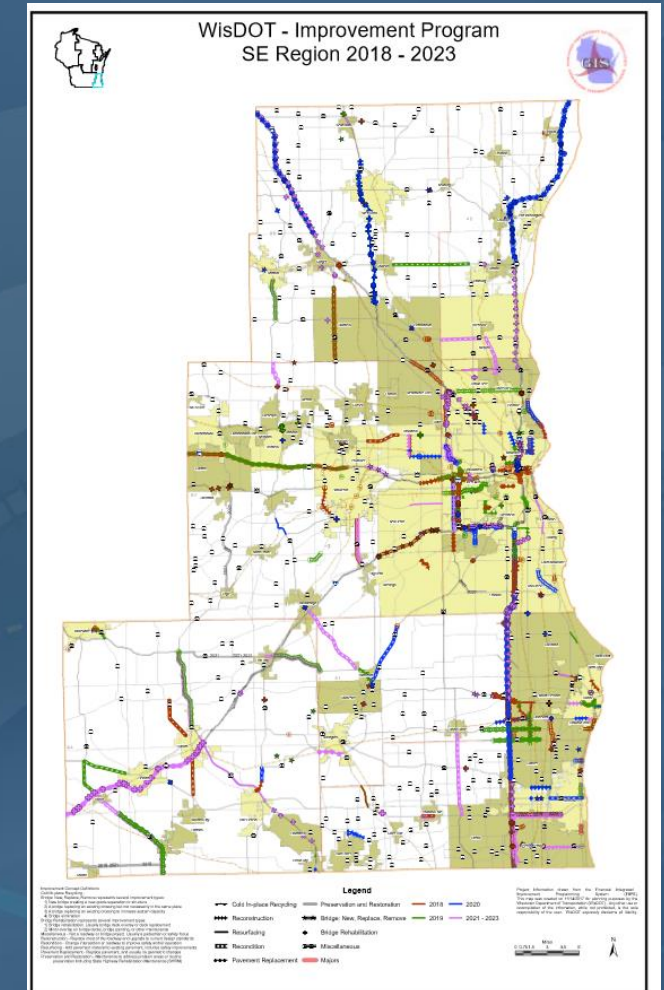
The background features a light gray gradient with several abstract, wavy, semi-transparent lines in shades of blue and gray. A dashed yellow line and a dashed gray line with a grid pattern also traverse the lower half of the slide.

Southeast Region Six-year Program Overview

Cindy Flower

Highway Construction Program Overview

- Mega/Major: Projects greater than \$50/\$100 million
- State Highway Rehabilitation (SHR): Rehabilitation, Recondition, Reconstruction (3R program)
 - State Trunk Highways
 - Backbone
- Advanceable Schedules
- Program Focus and Priorities



Project Updates

Native American Hiring Provision Projects and Projects Requiring Tribal Consultation

Kathy Kramer and Joan Bonack

South 60th Street – Reconstruction

Morgan to KK River Parkway, City of Milwaukee

Local Program Project (Project ID: 2415-00-01)

- 1.2 miles of reconstruction with no additional capacity
- City of Milwaukee project administered by WisDOT
- Residential property owned by Ho-Chunk Nation adjacent to project
- Funding: Surface Transportation Program (STP) Urban Funding (80/20)
- Scheduled LET date: 12/11/2018
- Native American Hiring Provision will apply

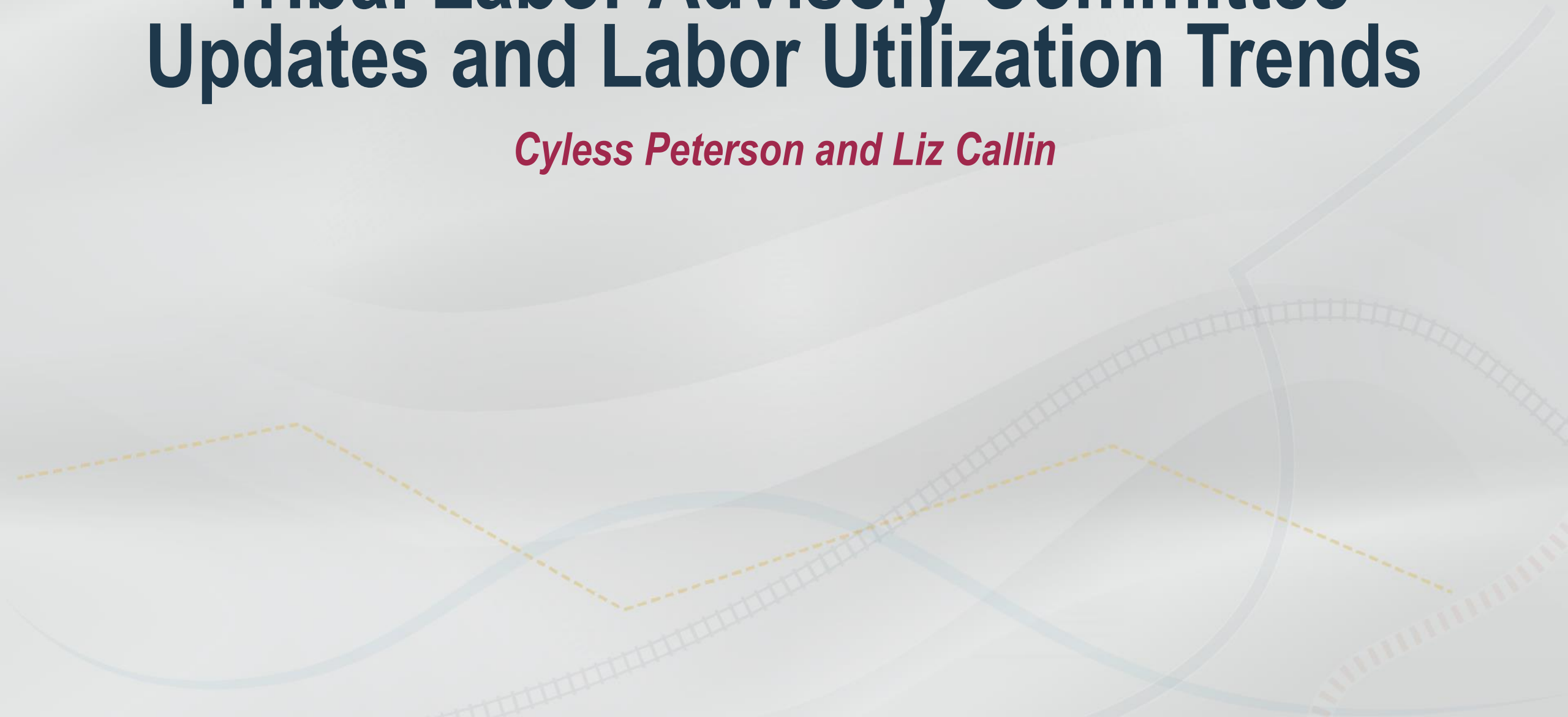
6th Street Bridge Replacement Over the Root River, City of Racine

Local Program Project (Project ID: 2703-00-02)

- Tribal consultation meeting held in September 2017
- Draft Data Recovery Plan, draft Document for Consultation (D for C), and draft MOA sent to SHPO and FHWA on 4/26/18.
- Project has the potential to adversely affect historic properties and cultural resources in the area
- Funding: Local Bridge Program (80% Federal / 20% Local)
- Construction funding has not yet been allocated (no LET date scheduled)

Tribal Labor Advisory Committee Updates and Labor Utilization Trends

Cyless Peterson and Liz Callin



Tribal Labor Advisory Committee Updates

- TLAC Overview
- Eight Recommendations
- Opportunities – SE Region
- Successes



Regional Labor Utilization – Recent Trends

Reporting Period	Native American (NA) Head count			Total Region Headcount	% Native American
	Males	Females	Total		
2018 – Q1*	5	0	5	625	0.8%
2017	35	3	38	4178	1.0%
2016	41	4	45	5235	0.9%
Reporting Period	Native American Employment Hour Totals			Total Region Hours	% Native American
	Males	Females	Total		
2018 – Q1*	170.0	0	170.0	48,194.9	0.4%
2017	11,577.8	687	12,264.8	1,172,848.3	1.0%
2016	15,557.9	1,048.0	16,601	1,776,723.6	0.9%

*Note: 2018 – Q1 labor numbers reflect Jan-March time period when very few construction projects are active.

Open Discussion

All

THANK YOU