



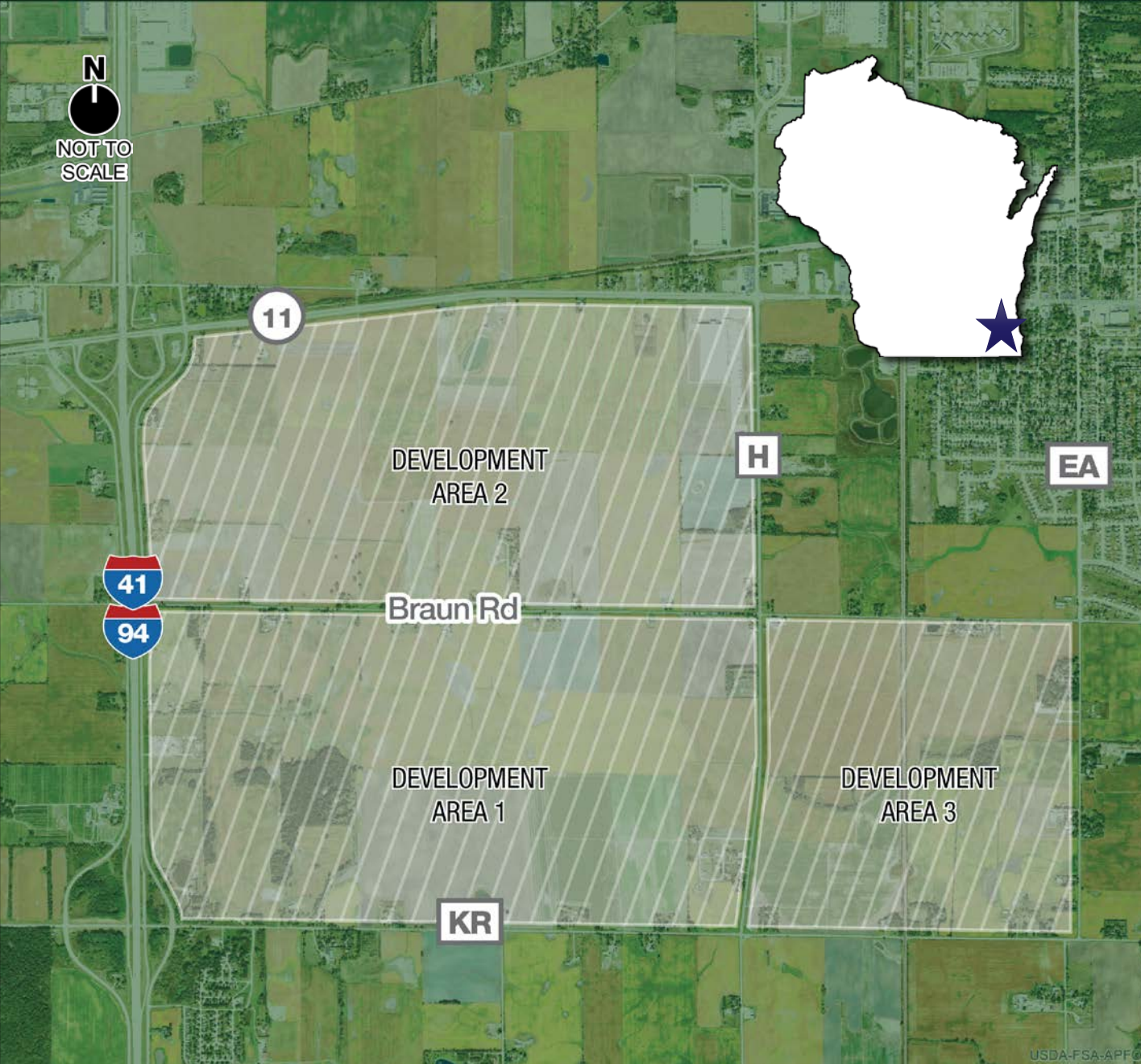
FOXCONN in WISCONSIN

BUILDING FOR THE FUTURE
MAY 23, 2018 SE REGION TRIBAL CONFERENCE

Foxconn Background

- Foxconn generated total annual revenue of \$141 billion in 2015 and was ranked No. 27 on the 2017 Fortune magazine Global 500
- Foxconn specializes in design, manufacturing and assembly of global computer and high-tech consumer electronics products
- The company has facilities in Asia, Brazil, Europe and Mexico. The Wisconsin facility will be its first significant investment in the U.S.
- Americans buy 35 million to 40 million televisions a year, none of which are made in the U.S.





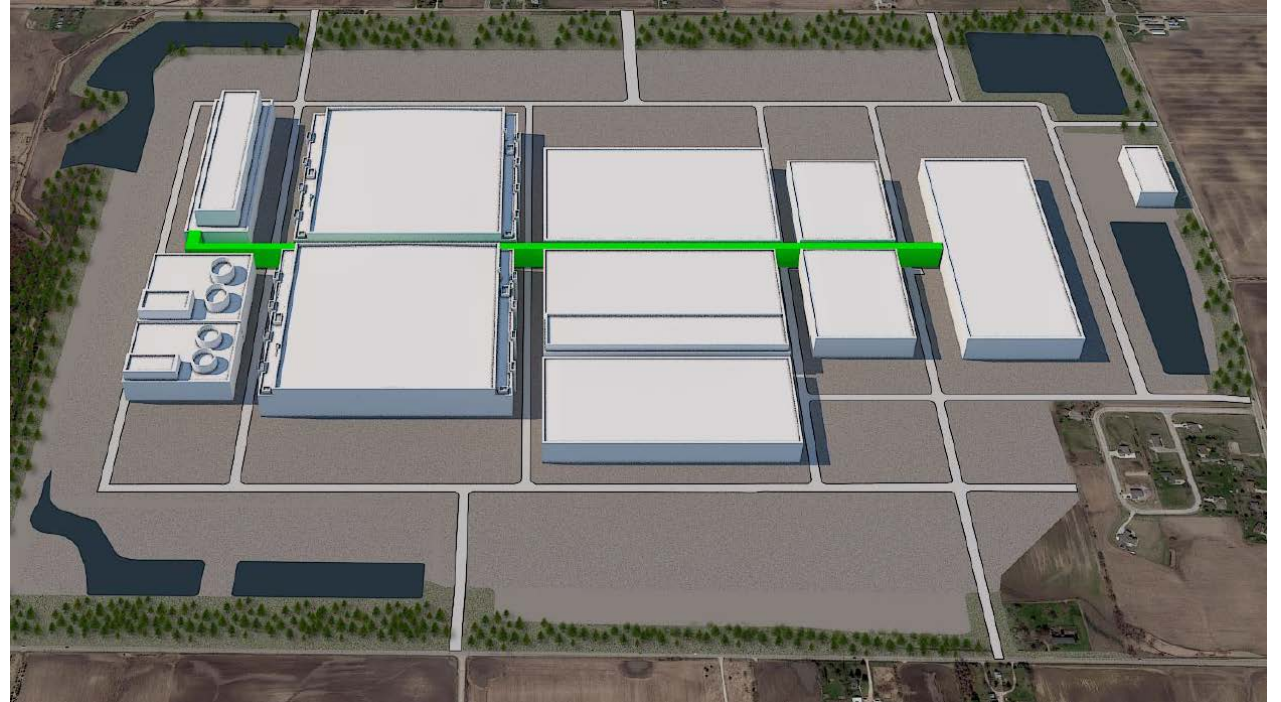
Foxconn in Wisconsin

- North America's first advanced display manufacturing campus in Mount Pleasant in Racine County
- Will be one of the largest manufacturing campuses in the world
- 22 million square feet facility
- 32,000+ jobs



The Project

- Largest **economic development** project in Wisconsin history
- Largest **greenfield investment** by a foreign-based company in U.S. history
- Largest **corporate attraction** project in U.S. history



Foxconn's North American HQ – “Bonus”



- Entire block in downtown Milwaukee
- 7-story office building
- Home to the newly established Wisconsin Valley Innovation Center
- Hub for 8k and 5G ecosystem that Foxconn will be creating in Wisconsin for distribution throughout North America



Investing in Our Future

SOURCES

\$10 billion IN PRIVATE INVESTMENT

Foxconn's \$10 billion private investment will generate more than \$31 million/year in new tax revenue that will more than pay for all public improvements and development costs. **Foxconn is providing financial guarantees to support a minimum valuation for the project of \$1.4 billion.**

PROJECT INVESTMENT

\$764 million

FUNDED BY FOXCONN
THROUGH TIF-RELATED TAX PAYMENTS

USES



LAND ACQUISITION
\$168 million



PUBLIC SAFETY COSTS
\$116 million



WATER & WASTEWATER
\$160 million



CONTINGENCY
\$28 million



ROADS
\$12 million



FINANCING EXPENSES
\$175 million



FIBER OPTICS & OTHER
\$5 million



DEVELOPMENT INCENTIVE
\$100 million

\$31 million/year NEW TAX REVENUE

Once TID closes, \$31 million/year in new property taxes will be available for the benefit of Mount Pleasant, Racine County and Local Schools—that's more than the Village's entire 2017 adopted budget!

11:1

EVERY DOLLAR OF
PUBLIC INVESTMENT
LEVERAGES 11 DOLLARS
OF **PRIVATE INVESTMENT.**

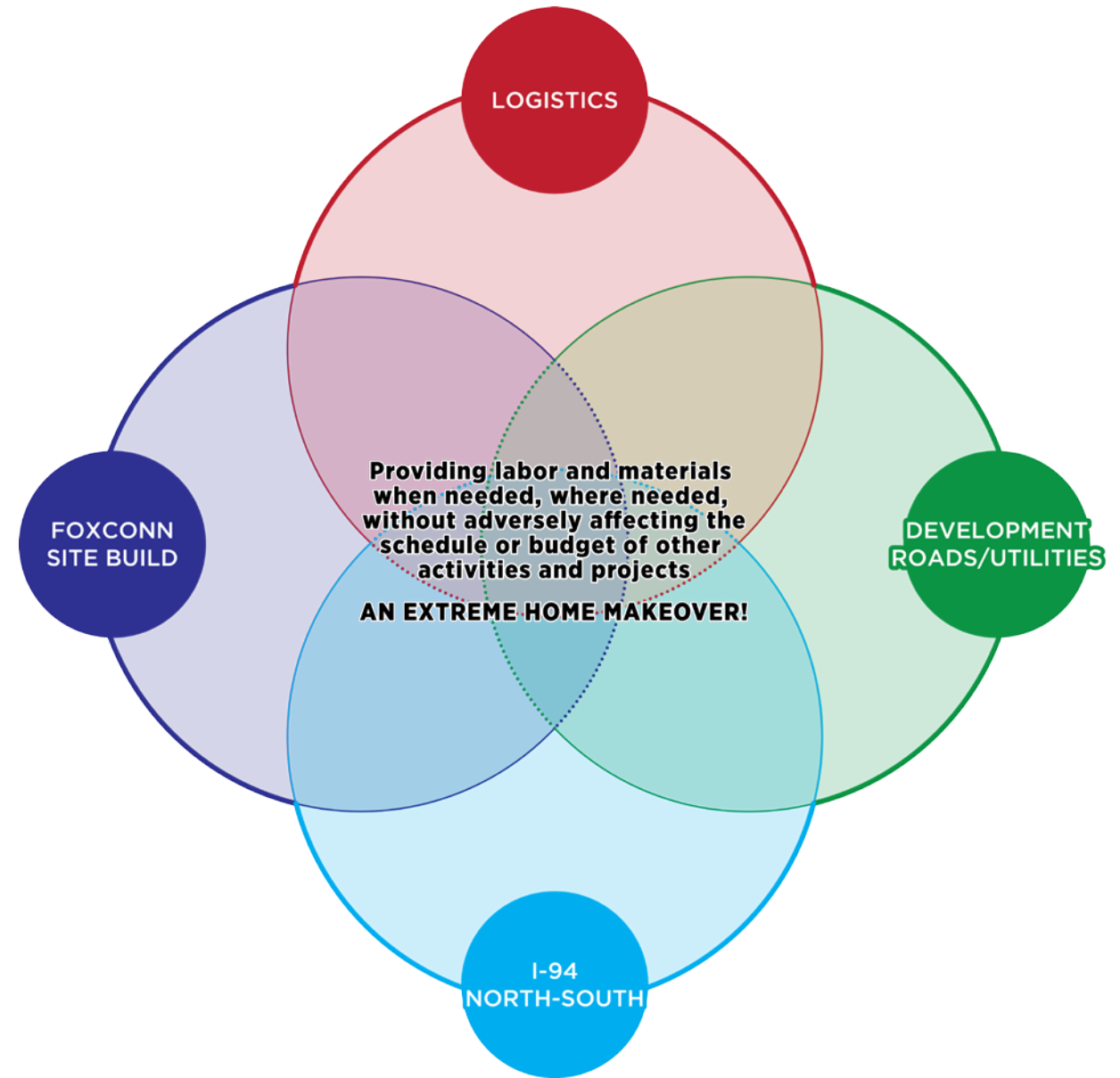


THE CHALLENGE



Project Development Challenge

- Complex simultaneous activities
- Multiple interactions, relationships among three projects
- Accelerated schedule



Why WisDOT?



- **We bring expertise**

WisDOT excels at managing large and complex projects with tight utility timeframes and numerous roadways

- **We are efficient**

One entity coordinating all road construction will be most efficient and cost-effective

- **We are ready**

WisDOT has already completed plans for improving I-94 North-South in Kenosha, Racine and Milwaukee counties



The Projects

I-94 NORTH SOUTH FREEWAY

- \$500 million
- Since October 2017
 - Off-the-shelf plans
 - Staging plans/accelerated schedule
 - Environmental re-evaluation
- South and Central segments let on May 22, 2018

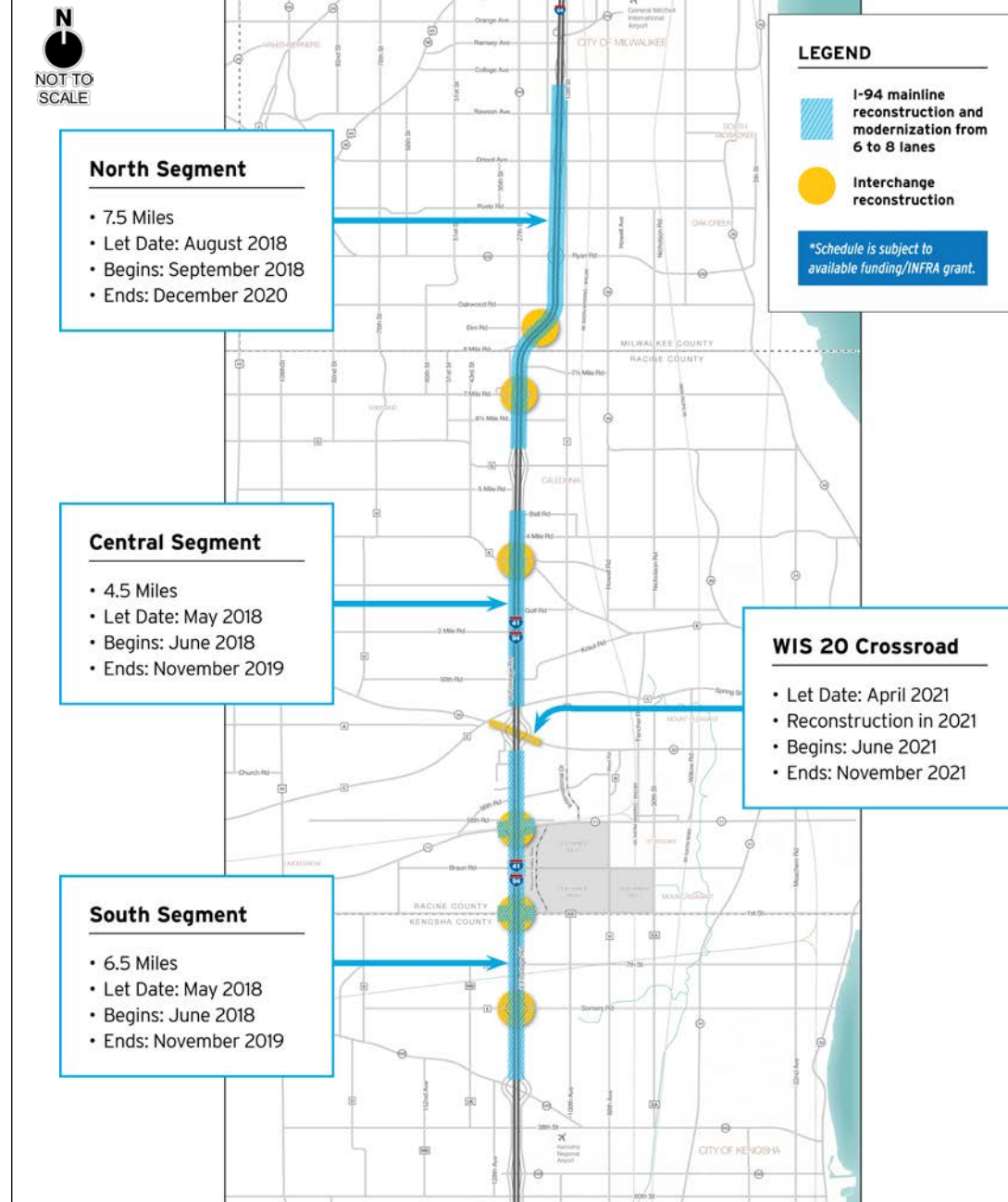
FOXCONN DEVELOPMENT ROADS

- \$166 million
- Since October 2017
 - Developed concepts
 - Preliminary design
 - Right of way by Mount Pleasant
- First lets in June 2018



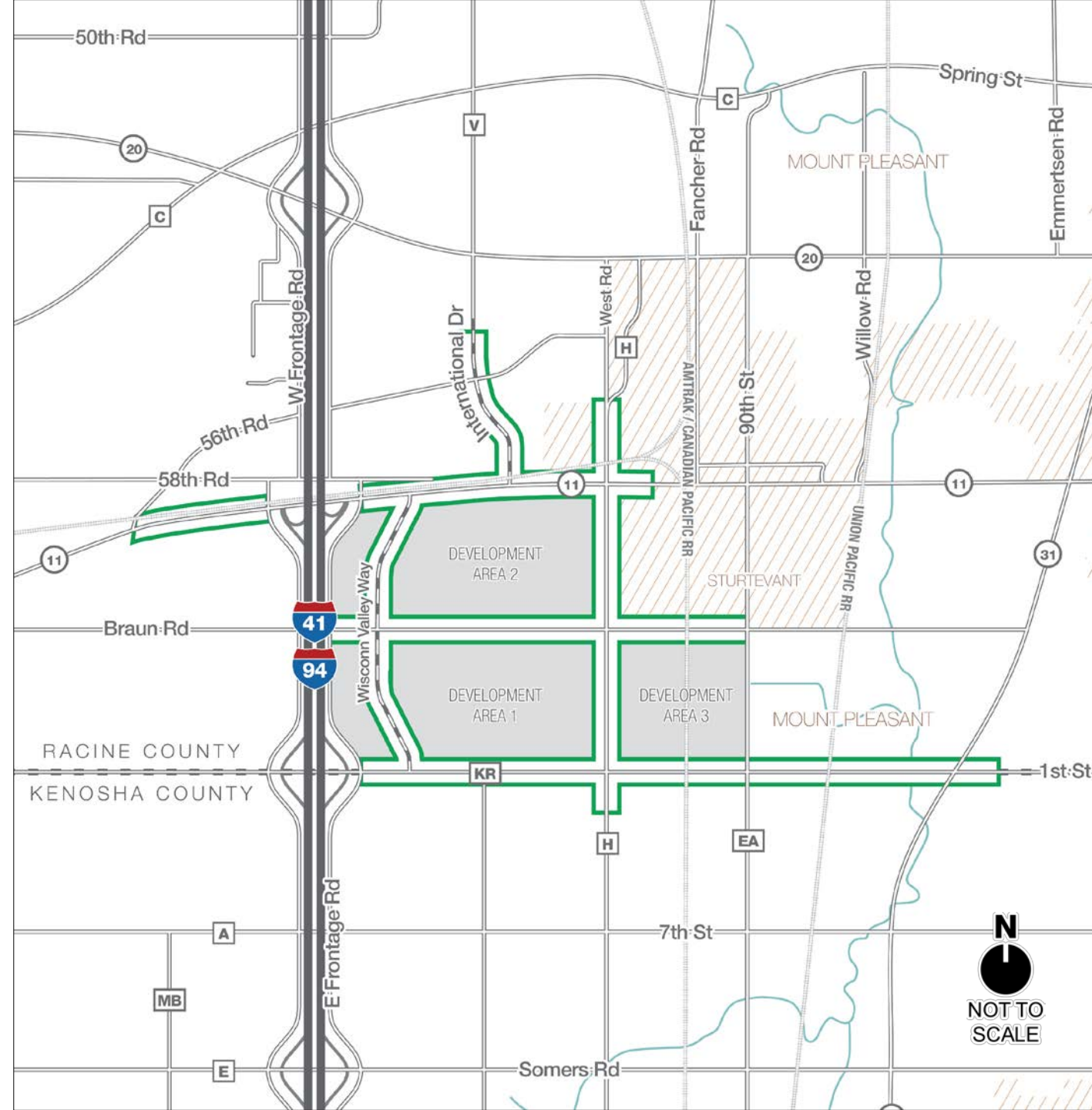
I-94 North-South Freeway Project

- Three mainline segments
- Six interchanges
- 18.5 miles
- Completion in 2021
- ***INFRA grant dependent



Local Development Roads

- County KR (I-94 to old Green Bay Rd)
- County H (County KR to Venice Ave)
- Braun Road (I-94 to 90th St)
- WIS 11 (56th Rd to County H)
- International Drive (extension to WIS 11)
- Wisconn Valley Way
- New north-south roadway between County KR and WIS 11



WisDOT Role in Development Roads

- \$166 million WisDOT investment in WIS 11 and local roads
 - Locals transferred jurisdiction to WisDOT because:
 - Significant projects best managed by one entity
 - One entity coordinating will be most efficient and cost-effective
 - WisDOT expertise in large complicated projects
 - Local jurisdiction returned after construction completed
- No WisDOT projects committed in 2018 will be affected



Road Details

- 17 miles of multi-lane divided urban roadways
 - Curb and gutter
 - Storm sewer
 - Signalized intersections
- Extensive local government coordination
 - Lighting
 - Landscaping
 - Multi-use path
- Coordinated construction schedules



Major Utility Construction



WATER:
42 mi



GAS:
26 mi



TELECOM:
28 mi

lift station
substation
water tower
booster station



ELECTRIC: 21 mi



SEWER: 18 mi



WisDOT DELIVERY

MEETING SPEED and SCALE OF FOXCONN



Program Management

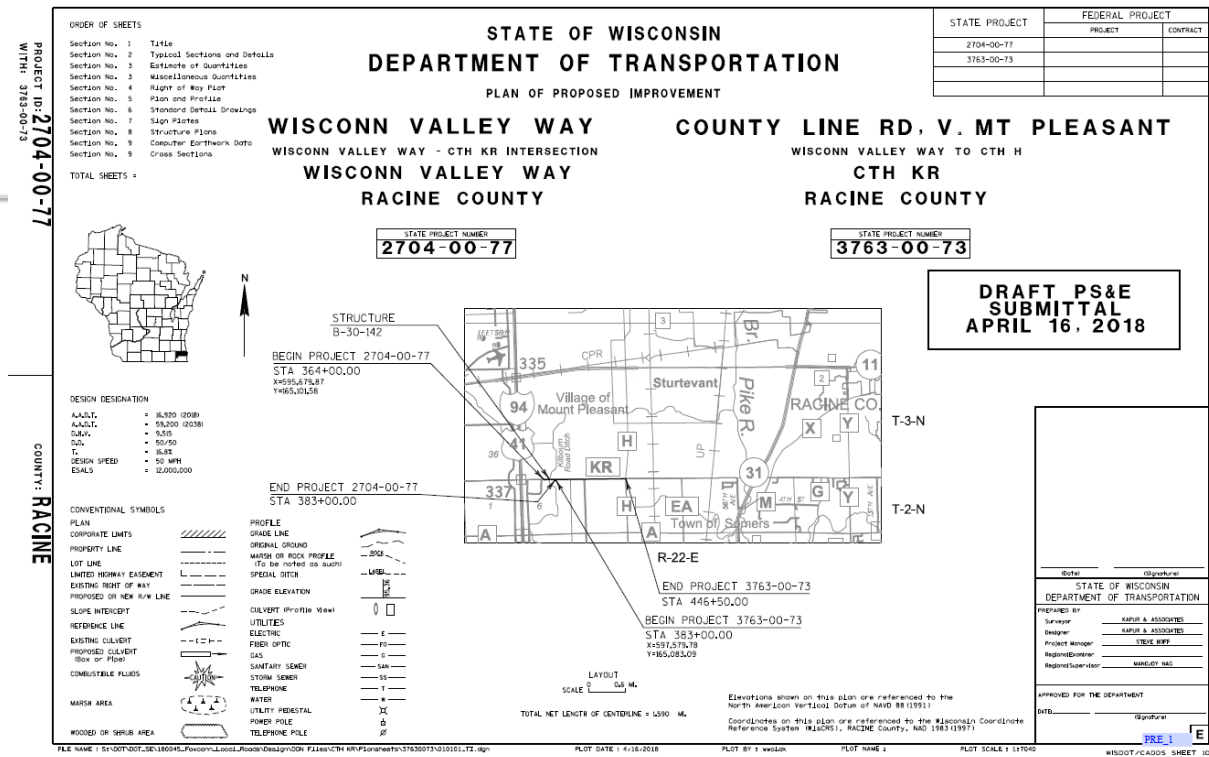
- Mega project best practices to manage both I-94 and Development roads
 - Experience built by Marquette Interchange, Mitchell Interchange, Zoo Interchange, US 41 Corridor Expansion, etc.
 - WisDOA/WisDOT/Village/Foxconn Executives
 - WisDOT teams
 - Design
 - Utility
 - Construction
 - Communication



Design

WisDOT top priority

- Dedicated Director
- Integrated multi-disciplined I-94 and Development Road team
- Flexibility in the design and letting process
 - Consolidated and accelerated design reviews
 - R/W plats developed using corridor width, rather than 60% plans



Design

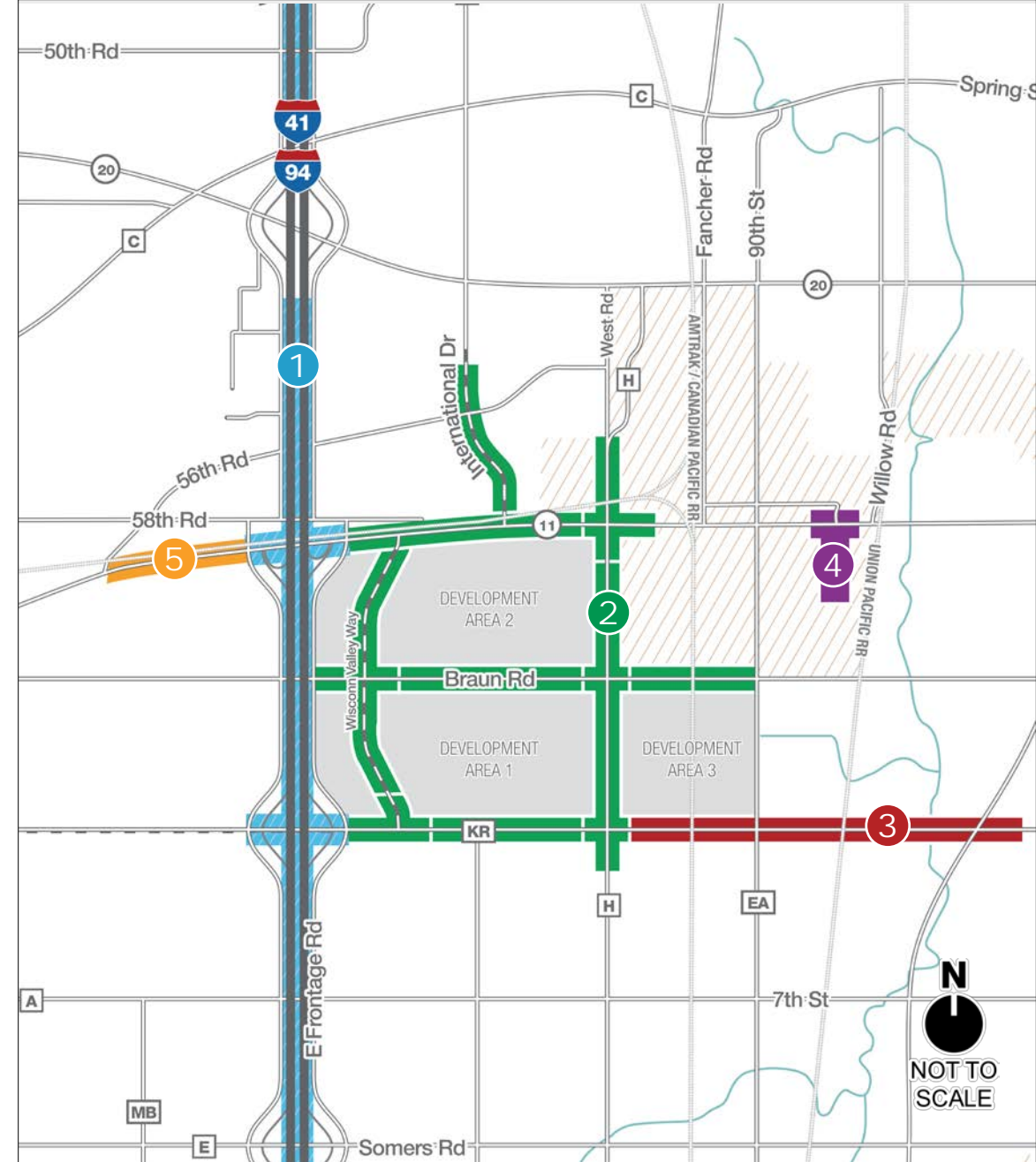
Agency Coordination

- Early and extensive high-level coordination with agencies and local municipalities reduced time needed to make design decisions
- U.S. Army Corps of Engineers (USACE) identified I-94 and Development Roads as priority projects
- Early coordination with USACE
 - Established review schedules
 - Developed agreement on “Jurisdictional Determination” to address all cultural resources as single process
 - Early field work minimized time USACE needed for permit reviews, arch/history surveys and T&E species reviews



Environmental/ Tribal Coordination

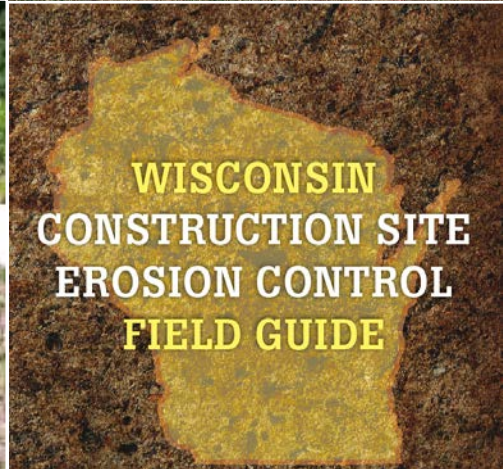
	ENVIRONMENTAL	TRIBAL NOTIFICATION	LET
1 I-94 North-South	NEPA re-evaluations 2017/2018	COMPLETE	2018 (funding dependent)
2 Development Roads within ETIM Zone	NEPA included in Section 404 Wetlands Permit completed by USACE	Included in USACE permit evaluation	2018, 2019, 2020
3 KR Expansion – Phase II	WEPA environmental review required	Anticipated in early summer 2018	2021
4 Willow Road/WIS 11 Intersection	WEPA process COMPLETED on 5/2/2018	Letters sent on 4/30/2018	2018
5 WIS 11 – Phase II	Document TBD	Letters to be sent upon project initiation	2020



Design

Permitting

- Preliminary designs utilized GIS mapping for early avoidance/minimization of wetlands
- Daily coordination with DNR facilitated timely permit reviews
- Early decision to mitigate wetlands at 2:1 ratio to minimize schedule risk
- First WisDOT use of In Lieu Fee to mitigate wetlands
 - Allows ability for DNR to quickly enact improvements within the two watersheds



Roadway Reconstruction is ... Complex



I-94 North-South Corridor



- High traffic volumes – 80,000-150,000 per day, depending on segment
- 20 percent trucks overall, 40 percent at night
- Interchanges spaced closely, every 2 miles
- Rebuilding I-94 North-South corridor and Wisconsin Valley local roads at same time will be complicated



I-94 N-S/Wisconn Valley TMP Components

TRAFFIC OPERATIONS PLAN



- Signal timings
- DPW contracts for local improvements
- Local street law enforcement patrols and closure assistance
- Coordinate with adjacent projects
- Review utility permits

INCIDENT MANAGEMENT PLAN



- Fire department services
- Freeway service teams
- Emergency vehicle preemption
- Incident/crisis communication plan
- Dedicated work zone law enforcement patrols

PUBLIC INFORMATION PLAN



- Website
- Newsletters/hard-copy pieces
- Social media
- Media interviews/press releases
- Weekly stakeholder traffic meeting
- Local officials/government briefings
- Public open house meetings
- Residential outreach
- Business outreach and signage
- Community groups and schools
- Special events



Communications Management

- I-94 and Development Roads communications are integrated
 - Website
 - Local officials briefings
 - Public, business, and monthly update meetings
 - Newsletters
 - Social Media
- Communicate what motorists can expect during construction



Workforce – all hands on deck



Candidate pools

- Existing residents
- Under and unemployed
- Focus on youth
- Workforce recruitment
- Facilitated by WisDOT



Scaling Up Skilled Workforce



Wisconsin Department of Workforce Development

- jobcenterofwisconsin.com

Apprenticeship Training Support

- dwd.Wisconsin.gov/apprenticeship

Training grants for up to 50% of eligible cost through its Fast Forward program

- wisconsinfastforward.com



A Wisconsin First Approach

Business Contracting and Inclusion Goals

Wisconsin based businesses	60%
Racine County based businesses	10%
Minority-owned (MBE) Business Enterprises	10% combined
Woman-owned (WBE) Enterprises	
Veteran-owned Business Enterprises	

Workforce Inclusion and Diversity Goals

Wisconsin resident work hours with an emphasis on Racine County residents	70%
Minorities or people of color	10% combined
Woman	
Veterans	

Inclusion goals for business contracting and workforce diversity are identical for private and public infrastructure construction



FUTURE OPPORTUNITIES



Long-Term Planning – SEWRPC *VISION 2050*

- SEWRPC Regional Land Use and Transportation Plan update
- Addresses long-term transportation needs at local, county, state levels
- Development projects currently underway address immediate needs



SEWRPC VISION 2050

VISION 2050 RECOMMENDED TRANSIT SERVICES WITH ADDITIONAL SERVICES CONNECTING WORKERS TO FOXCONN

VISION 2050 TRANSIT SERVICES

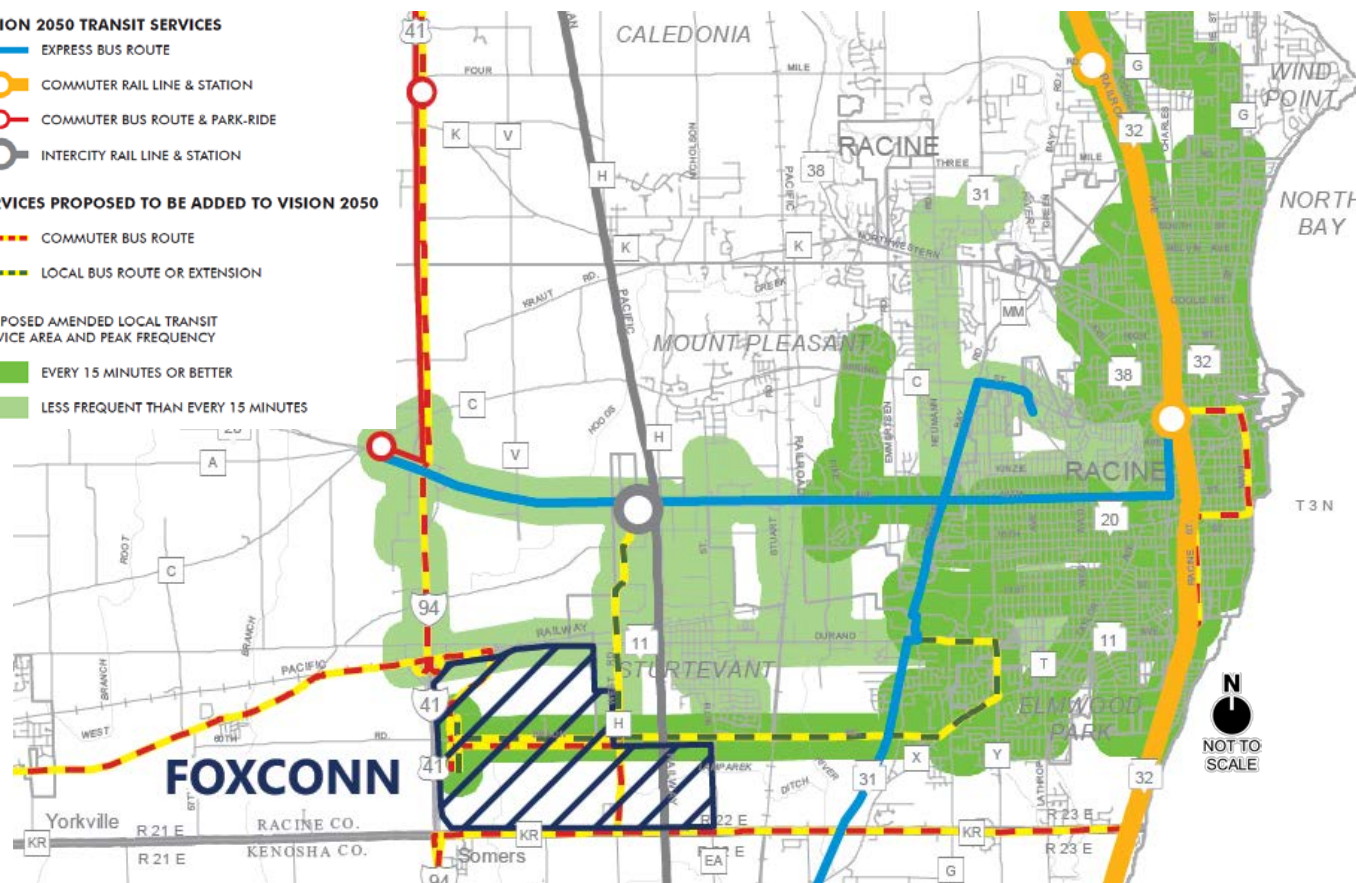
- EXPRESS BUS ROUTE
- COMMUTER RAIL LINE & STATION
- COMMUTER BUS ROUTE & PARK-RIDE
- INTERCITY RAIL LINE & STATION

SERVICES PROPOSED TO BE ADDED TO VISION 2050

- COMMUTER BUS ROUTE
- LOCAL BUS ROUTE OR EXTENSION

PROPOSED AMENDED LOCAL TRANSIT SERVICE AREA AND PEAK FREQUENCY

- EVERY 15 MINUTES OR BETTER
- LESS FREQUENT THAN EVERY 15 MINUTES



- Proposed December 2018 update recommends additional transit service
- Regional strategies
 - Increases in service
 - Interconnected routes



Locally Led Transit Initiatives

- Regional Transit Leadership Council

- Supports initiatives that will resolve region's complex connectivity challenges as outlined in VISION 2050

- 10-member Executive Committee



Paul Decker (Chair) – Waukesha County
John Kissinger – GRAEF
Steve Baas – MMAC
Tom Barrett – City of Milwaukee
Dan Bukiewicz – City of Oak Creek
Kathy Ehley – City of Wauwatosa
Eve Hall – Milwaukee Urban League
Tracy Johnson – Commercial Association of Realtors
Kevin Muhs – SEWRPC
Pat O'Brien – Milwaukee 7
Steve Ponto – City of Brookfield
Beth Weirick – Milwaukee Downtown

- Eastern Racine County Transportation Task Force

- Goal: Develop pragmatic recommendations, working within existing parameters, to improve east-west travel times and help move workers to jobs

- 7-member Task Force



Jonathan Delagrave (Chair) – Racine County
Rusty Clark – Racine County Board
Dave DeGroot – Village of Mt. Pleasant
Jim Dobbs – Village of Caledonia
Jerry Franke – Racine County Consultant
Jayme Hoffman – Village of Sturtevant
Cory Mason – City of Racine



Smart Corridors Systems Engineering

- Structured and interdisciplinary approach
- Established three specific, baseline use cases:
 1. Enhance I-94 North-South Freeway freight efficiency and throughput
 2. Enhance I-94 North-South Freeway and local road safety operations.
 3. Provide technology-based and “Last Mile” transportation options for the Wisconsin Valley Science and Technology Park Site Development



Source: www.truckinsurancenitic.com



'Last Mile' Tech-Based Options on Surface Streets



- Transportation from I-94 to front door or loading dock of Foxconn, other businesses, GMIA
- Working with Foxconn on-campus AV shuttle
- Making “Last Mile” freight connections
- Planning surface street infrastructure to support future technology





WISCONN VALLEY NEWS

The Wisconn Valley News is published every other week and designed to keep interested individuals up to date on Foxconn construction plans, infrastructure improvements, traffic pattern updates, and more. Local elected officials, suppliers, contractors and members of the public are encouraged to turn to the Wisconn Valley News for the latest project status, road updates, next steps, and interesting facts. When appropriate, special bulletins will also be distributed to ensure the most timely information possible.



Project Status



In November, Governor Scott Walker and Foxconn Chairman Terry Gou signed an agreement to bring a \$10 billion world-class advanced manufacturing campus and 13,000 jobs to Wisconsin. This project, called Wisconn Valley, is a once-in-a-lifetime opportunity, expected to have a transformational effect on our entire state.

Following the signed contract, Foxconn Technology Group deposited \$60 million to purchase land in Mount Pleasant between WIS 11 and County KR. The project is underway and work is moving forward to create a campus that will build 7 million LCD units a year in Wisconsin. Foxconn is finalizing the design and construction plans for the campus, while state and local

governments are working to finalize plans for water, sewer, and roadways.

To keep the project on time, two infrastructure projects were advanced. Hoffman Construction, of Black River Falls, was awarded a contract by the Wisconsin Department of Transportation to reconstruct a North-South frontage road along I-94 between County KR and WIS 20, to help manage traffic flow in the project area. Advance Construction Inc., of Green Bay, was awarded a contract by the Racine Water Utility to begin water main work on County Highway H adjacent to the development area. These projects represent a small fraction of the overall infrastructure work to be completed.

While most of projects related to Foxconn have not yet come out for bid, information will be shared when opportunities for bids become available in the future.

Sign up to stay up-to-date on news surrounding this historic development!



Questions?

For further information please visit

- www.foxconnracinecounty.com
- www.wisupplychainmarketplace.com
- www.wisconnvalley.wi.gov
- www.projects.511wi.gov

