

| | | | | | |
|------------------------|-------------|--------------|------------------|---------|---|
| PROJECT NO: 3140-00-72 | HWY: STH 59 | COUNTY: ROCK | PROJECT OVERVIEW | SHEET 2 | E |
|------------------------|-------------|--------------|------------------|---------|---|

GENERAL NOTES

NO TREES OR SHRUBS ARE TO BE REMOVED WITHOUT APPROVAL OF THE ENGINEER.

THE LOCATION OF DRIVEWAY MATCH POINTS NOT SHOWN IN THE PLANS WILL BE DETERMINED BY THE ENGINEER.

ALL LAYOUT DATA IS REFERENCED TO THE R/L UNLESS OTHERWISE NOTED.

STATIONING, DISTANCES AND OFFSETS FOR SIGNS SHOWN ON THE PLANS ARE APPROXIMATE AND THE LOCATIONS OF SIGNS ARE TO BE DETERMINED IN THE FIELD BY THE ENGINEER.

THE LOCATIONS OF EXISTING AND PROPOSED UTILITY INSTALLATIONS AS SHOWN ON THE PLANS ARE APPROXIMATE. THERE MAY BE OTHER UTILITY INSTALLATIONS WITHIN THE PROJECT AREA THAT ARE NOT SHOWN.

THE CONTRACTOR WILL COORDINATE CONSTRUCTION ACTIVITIES WITH A CALL TO DIGGERS HOTLINE AND/OR A CALL TO THE UTILITIES THAT HAVE INSTALLATIONS WITHIN THE PROJECT AREA.

EROSION CONTROL DEVICES ARE AT SUGGESTED LOCATIONS AS SHOWN ON PLAN DETAILS. ACTUAL LOCATIONS WILL BE DETERMINED BY THE CONTRACTORS ECIP AND BY THE ENGINEER. EROSION CONTROL DEVICES SHALL BE MAINTAINED UNTIL PERMANENT VEGETATION IS ESTABLISHED OR UNTIL THE ENGINEER DETERMINES THAT THE DEVICE IS NO LONGER REQUIRED.

RE-TOPSOILING OF ALL DISTURBED AREAS SHALL BE DONE IMMEDIATELY AFTER GRADING IS COMPLETED WITHIN THOSE AREAS. FERTILIZE, SEED AND MULCH OR PLACE SOD ON ALL TOPSOILED AREAS WITHIN 5 WORKING DAYS AFTER PLACEMENT OF THE TOPSOIL. ANY OR ALL AREAS LEFT EXPOSED FOR MORE THAN 24 HOURS, REQUIRE TEMPORARY SEED AND MULCH.

STOCKPILE EXCESS MATERIAL OR SPOILS ON UPLAND AREAS AWAY FROM WETLANDS, FLOODPLAINS, AND WATERWAYS. STOCKPILED SOIL SHALL BE PROTECTED AGAINST EROSION. IF STOCKPILED MATERIAL IS LEFT FOR MORE THAN 7 CALENDAR DAYS, SEED THE STOCKPILE WITH TEMPORARY SEED AT CONTRACTORS COST.

A SAWED JOINT IS REQUIRED WHERE NEW HMA PAVEMENT MEETS EXISTING HMA PAVEMENT.

CONTRACTOR MUST CONTACT THE PROJECT ENGINEER, WISDOT-SW REGION SURVEY COORDINATOR, AND ROCK COUNTY SURVEYOR; AT LEAST 5 DAYS PRIOR TO WORK NEAR ANY PUBLIC SURVEY MONUMENT.

ORDER OF SECTION 2 DETAIL SHEETS

GENERAL NOTES

TYPICAL SECTIONS

CONSTRUCTION DETAILS

PLAN DETAILS

PERMANENT SIGNING

PAVEMENT MARKING

TRAFFIC CONTROL

STH 59 HMA PAVEMENT

UPPER LAYER - 1 3/4 INCHES OF HMA PAVEMENT 4 MT 58-28 S

LOWER LAYER - 2 1/4 INCHES OF HMA PAVEMENT 3 MT 58-28 S

UTILITY CONTACTS

AT&T WISCONSIN
TOM CROWLEY
2005 PEWAUKEE RD
WAUKESHA, WI 53188
(262)-896-7427
TC1657@ATT.COM

CENTURYLINK
KEVIN ZICKERT
224 INDUSTRIAL DR
NORTH PRAIRIE, WI 53153
(262) 392-5200
KEVIN.ZICKERT@CENTURYLINK.COM

CHARTER COMMUNICATIONS
BRANDON OPHEIM
1348 PLAINFIELD AVE
JANESVILLE, WI 53545
(608) 209-3195
BRANDON.OPHEIM@CHARTER.COM

CITY OF WHITEWATER - SEWER
TIM REEL
109 CTY HWY U
WHITEWATER, WI 53190
(262) 473-5920
TREEL@WHITEWATER-WI.GOV

WE ENERGIES - GAS/PETROLEUM
WE-UTILITY-RELOCATIONS@WE-ENERGIES.COM

WE ENERGIES - ELECTRIC
WE-UTILITY-RELOCATIONS@WE-ENERGIES.COM

ATC MANAGEMENT, INC
TRANS 220 MAILBOX
801 O'KEEFE RD, PO BOX 6113
DEPERE, WI 54115 6113
(920)338-6582
DL-ATCDOTNOTIFICATIONS@ATCLLC.COM

ENBRIDGE ENERGY - GAS/PETROLEUM
KELLY DALY
1600 2ND AVE SW, SUITE 16
MINOT, ND 58701
(701) 857-0813
KELLY.DALY@ENBRIDGE.COM

CITY OF WHITEWATER - WATER
RICK LIEN
308 N. FREMONT
WHITEWATER, WI 53190
(262) 473-0543
RLIEN@WHITEWATER-WI.GOV

AGENCY CONTACTS

WI DNR LIASON
SHELLEY WARWICK
3911 FISH HATCHERY ROAD
FITCHBURG, WI 53711
608-444-2835
SHELLEY.WARWICK@WISCONSIN.GOV

TOWN OF MILTON POLICE DEPARTMENT
THOMAS KUNKEL
(608) 868-6656
TOWNOFMILTONPD@CHARTER.NET

CITY & TOWN OF MILTON FIRE DEPARTMENT
614 W MADISON AVE
MILTON, WI 53563
(608) 868-2842
MILTONFIRE@MILTONFIRE.COM

CITY OF MILTON POLICE DEPARTMENT
SCOTT MARQUARDT
690 S JANESVILLE ST
MILTON, WI 53563
(608) 868-6910
SMARQUARDT@MILTON-WI.GOV

ROCK COUNTY SURVEYOR
BRAD HEUER, P.L.S.
ROCK COUNTY SURVEYOR
51 S. MAIN ST
JANESVILLE, WI 53545
OFFICE: 608-757-5658
CELL: 608-751-2778
WWW.CO.ROCK.WI.US/SURVEYOR

ROCK COUNTY SHERIFF
TROY KNUDSON
200 US HIGHWAY 14
JANESVILLE, WI 53545
(608) 757-8000
KNUDSON@CO.ROCK.WI.US

ROCK COUNTY DPW
DUANE JORGENSON
3715 N NEWVILLE RD
JANESVILLE WI, 53545
(608) 757-5450
JORGEND@CO.ROCK.WI.US

WISCONSIN AND SOUTHERN RR
ROGER SCHAALMA
1980 E JOHNSON ST
MADISON, WI 54704
(608) 620-2044
RSCHAALMA@WATCOCOMPANIES.COM

WISCONSIN INDEPENDENT NETWORK, LLC
DICK HAMMETTER
800 WISCONSIN AVE, STE 219
EAU CLAIRE, WI 54703
(715) 838-4406
DICK.HAMMETTER@WINTECHNOLOGY.COM

CITY OF WHITEWATER POLICE DEPARTMENT
AARON RAAP
(262) 473-1370
ARAAP@WHITEWATER-WI.GOV

CITY OF WHITEWATER DPW
BRAD MARQUARDT
(262) 473-0139
BMARQUARDT@WHITEWATER-WI.GOV

CITY OF WHITEWATER FIRE DEPARTMENT
MIKE HIGGINS
312 W WHITEWATER ST
WHITEWATER, WI 53190
(262) 473-0510
MHIGGINS@WHITEWATERFIRE.ORG

CITY OF MILTON DPW
HOWARD ROBINSON
MILTON CITY HALL
MILTON , WI 53563
(608) 868-6914
HROBINSON@MILTON-WI.GOV

WISDOT CONTACTS

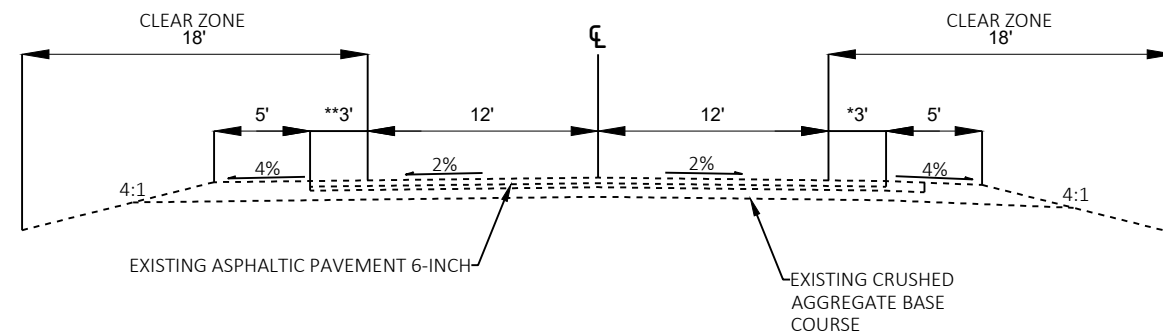
PROJECT MANAGER
NGUYEN LY
141 NW BARTSOW STREET
PO BOX 798
WAUKESHA, WI 53187-0798
(262) 548-8739
NGUYEN.LY@DOT.WI.GOV

DESIGN LEADER
GARY STARK
141 NW BARTSOW STREET
PO BOX 798
WAUKESHA, WI 53187-0798
(262) 548-8761
GARY.STARK@DOT.WI.GOV

WISDOT HIGHWAY MAINTENANCE
TERRY LAMMERT
2101 WRIGHT ST
MADISON, WI 53704
(608) 516-6535
TERRY.LAMMERT@DOT.WI.GOV

SURVEY COORDINATOR
PATRICK STANKIEWICZ
(608) 246-7918
PATRICK.STANKIEWICZ@DOT.WI.GOV

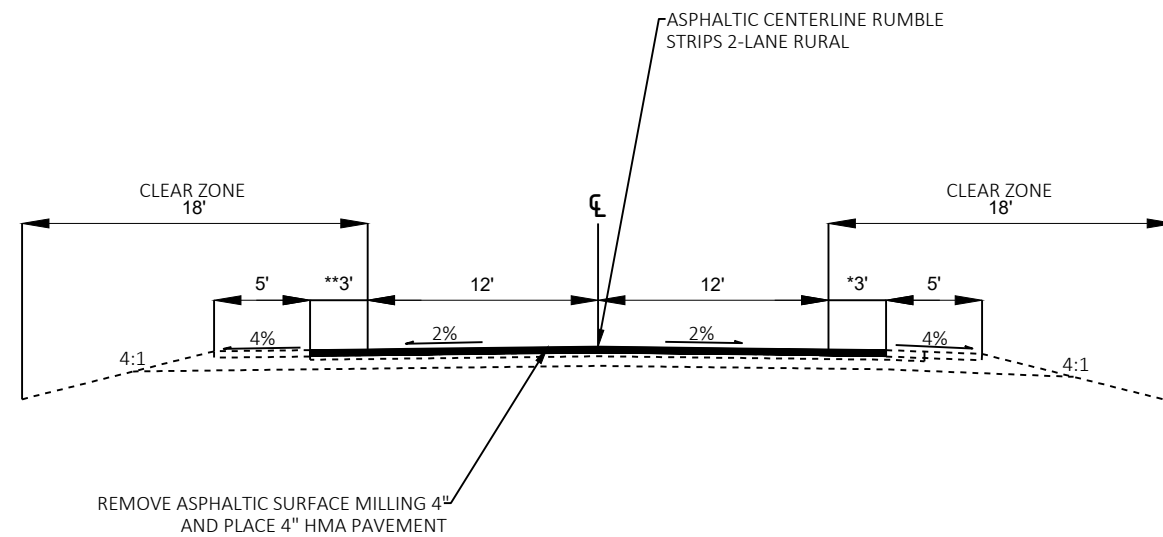




EXISTING TYPICAL SECTION
STH 59

STA 175+74 TO STA 569+14

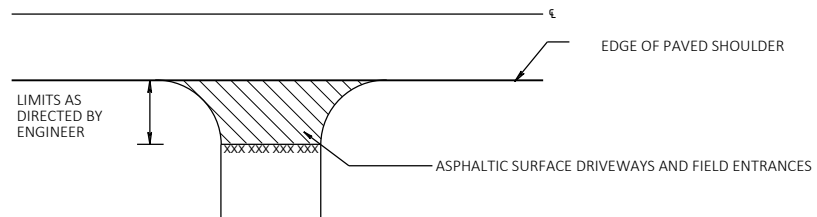
*STA 175+74 TO STA 196+29 RT - 5' ASPHALT SHOULDERS
**STA 443+00 TO STA 459+00 LT - 6' ASPHALT SHOULDERS, ASPHALTIC SHOULDER RUMBLE STRIPS 2-LANE RURAL



PROPOSED TYPICAL SECTION
STH 59

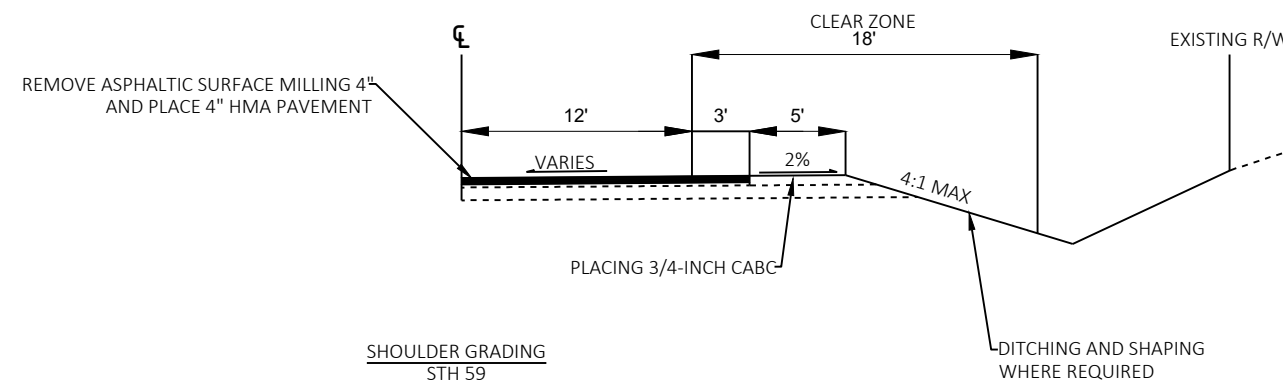
STA 175+74 TO STA 569+14

*STA 175+74 TO STA 196+29 RT - 5' ASPHALT SHOULDERS
**STA 443+00 TO STA 459+00 LT - 6' ASPHALT SHOULDERS, ASPHALTIC SHOULDER RUMBLE STRIPS 2-LANE RURAL



RURAL DRIVEWAY DETAIL - ASPHALT

STH 59

SHOULDER GRADING
STH 59

STA 348+00 TO 359+00 RT

*ALIGNMENT DEVELOPED IN PLANNING FOR PLAN PRODUCTION ONLY. DO NOT USE FOR FINAL DESIGN.

BEGIN PROJECT, 3140-00-72
STA 175+74



LEGEND

- 1 REMOVING CURB & GUTTER
- 2 CONCRETE CURB & GUTTER 6-INCH SLOPED 36-INCH TYPE D AND 8-INCHES 1 1/4 - INCH CABC BASE
- 3 ASPHALTIC FLUMES
- 4 ASPHALTIC SURFACE DRIVEWAYS AND FIELD ENTRANCES
- 5 GRADING SLOPED ENDWALL AREA
- 6 SALVAGED TOP SOIL, FERTILIZER TYPE B, SEEDING (#30), E-MAT CLASS 1 TYPE B

X X X SAW CUT —●— SILT FENCE

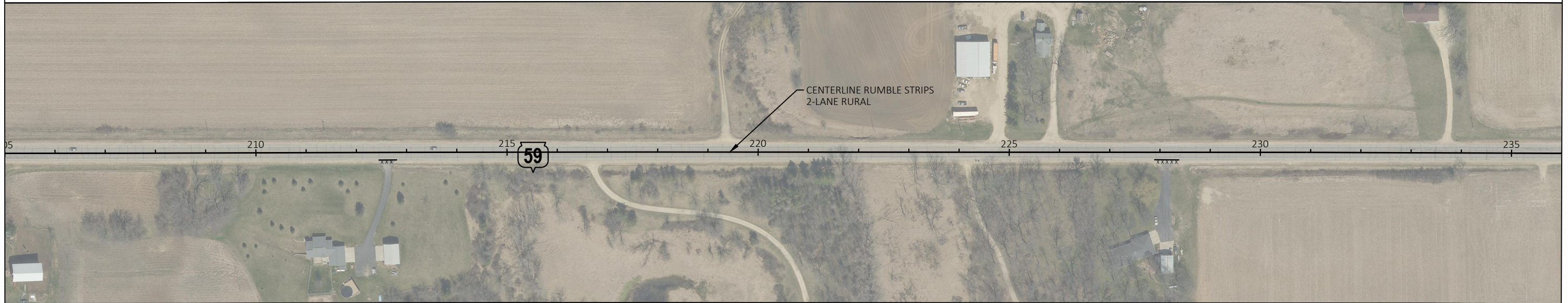
 DITCHING AND SHAPING

 TEMPORARY DITCH CHECKS

NOTE:
SAW CUT LOCATIONS TO BE VERIFIED BY
ENGINEER (TYP.)

*ALIGNMENT DEVELOPED IN PLANNING FOR PLAN PRODUCTION ONLY. DO NOT USE FOR FINAL DESIGN.

N



LEGEND

- 1 REMOVING CURB & GUTTER
- 2 CONCRETE CURB & GUTTER 6-INCH SLOPED 36-INCH TYPE D AND 8-INCHES 1 $\frac{1}{4}$ - INCH CABG BASE
- 3 ASPHALTIC FLUMES
- 4 ASPHALTIC SURFACE DRIVEWAYS AND FIELD ENTRANCES
- 5 GRADING SLOPED ENDWALL AREA
- 6 SALVAGED TOP SOIL, FERTILIZER TYPE B, SEEDING (#30), E-MAT CLASS 1 TYPE B

X X X SAW CUT —●— SILT FENCE

 DITCHING AND SHAPING

 TEMPORARY DITCH CHECKS

NOTE:

SAW CUT LOCATIONS TO BE VERIFIED BY ENGINEER (TYP.)

PROJECT NO: 3140-00-72

HWY: STH 59

COUNTY: ROCK

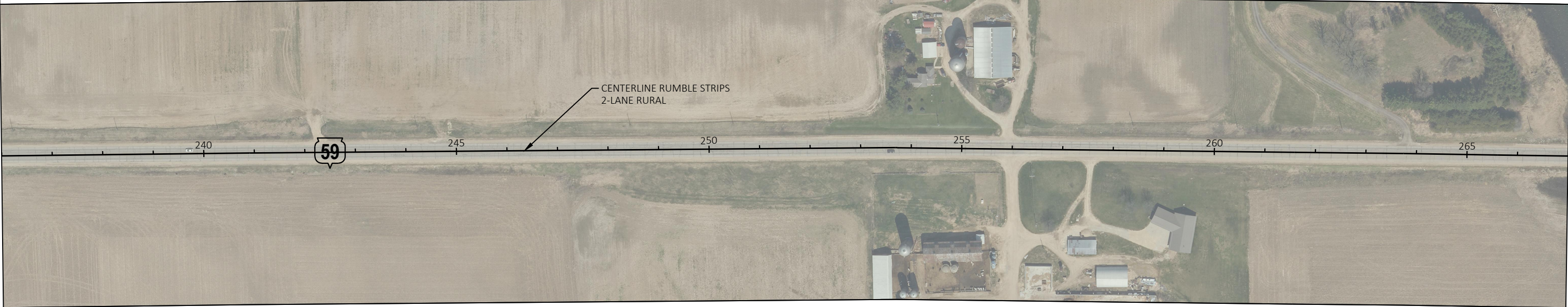
PLAN DETAILS

SHEET

8

E

*ALIGNMENT DEVELOPED IN PLANNING FOR PLAN PRODUCTION ONLY. DO NOT USE FOR FINAL DESIGN.



LEGEND

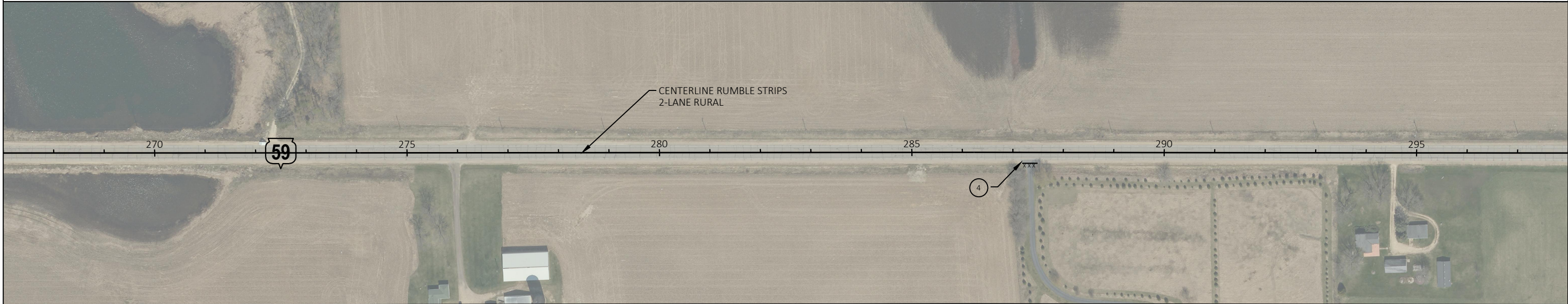
- 1 REMOVING CURB & GUTTER
- 2 CONCRETE CURB & GUTTER 6-INCH SLOPED 36-INCH TYPE D AND 8-INCHES 1 1/4 - INCH CABG BASE
- 3 ASPHALTIC FLUMES
- 4 ASPHALTIC SURFACE DRIVEWAYS AND FIELD ENTRANCES
- 5 GRADING SLOPED ENDWALL AREA
- 6 SALVAGED TOP SOIL, FERTILIZER TYPE B, SEEDING (#30), E-MAT CLASS 1 TYPE B

- X X X SAW CUT
- SILT FENCE
- [Hatched Box] DITCHING AND SHAPING
- [Triangle Box] TEMPORARY DITCH CHECKS

NOTE:
SAW CUT LOCATIONS TO BE VERIFIED BY
ENGINEER (TYP.)

236+00.00

*ALIGNMENT DEVELOPED IN PLANNING FOR PLAN PRODUCTION ONLY. DO NOT USE FOR FINAL DESIGN.



LEGEND

- 1 REMOVING CURB & GUTTER
- 2 CONCRETE CURB & GUTTER 6-INCH SLOPED 36-INCH TYPE D AND 8-INCHES 1 1/4 - INCH CABG BASE
- 3 ASPHALTIC FLUMES
- 4 ASPHALTIC SURFACE DRIVEWAYS AND FIELD ENTRANCES
- 5 GRADING SLOPED ENDWALL AREA
- 6 SALVAGED TOP SOIL, FERTILIZER TYPE B, SEEDING (#30), E-MAT CLASS 1 TYPE B

X X X SAW CUT —●— SILT FENCE

 DITCHING AND SHAPING

 TEMPORARY DITCH CHECKS

NOTE:
SAW CUT LOCATIONS TO BE VERIFIED BY
ENGINEER (TYP.)

*ALIGNMENT DEVELOPED IN PLANNING FOR PLAN PRODUCTION ONLY. DO NOT USE FOR FINAL DESIGN.

| BENCHMARKS | | | |
|------------|---------|-------|-------------|
| NO. | STATION | ELEV. | DESCRIPTION |
| | | | |



LEGEND

- 1 REMOVING CURB & GUTTER
- 2 CONCRETE CURB & GUTTER 6-INCH SLOPED 36-INCH TYPE D AND 8-INCHES 1 1/4 - INCH CABG BASE
- 3 ASPHALTIC FLUMES
- 4 ASPHALTIC SURFACE DRIVEWAYS AND FIELD ENTRANCES
- 5 GRADING SLOPED ENDWALL AREA
- 6 SALVAGED TOP SOIL, FERTILIZER TYPE B, SEEDING (#30), E-MAT CLASS 1 TYPE B

X X X SAW CUT —●— SILT FENCE

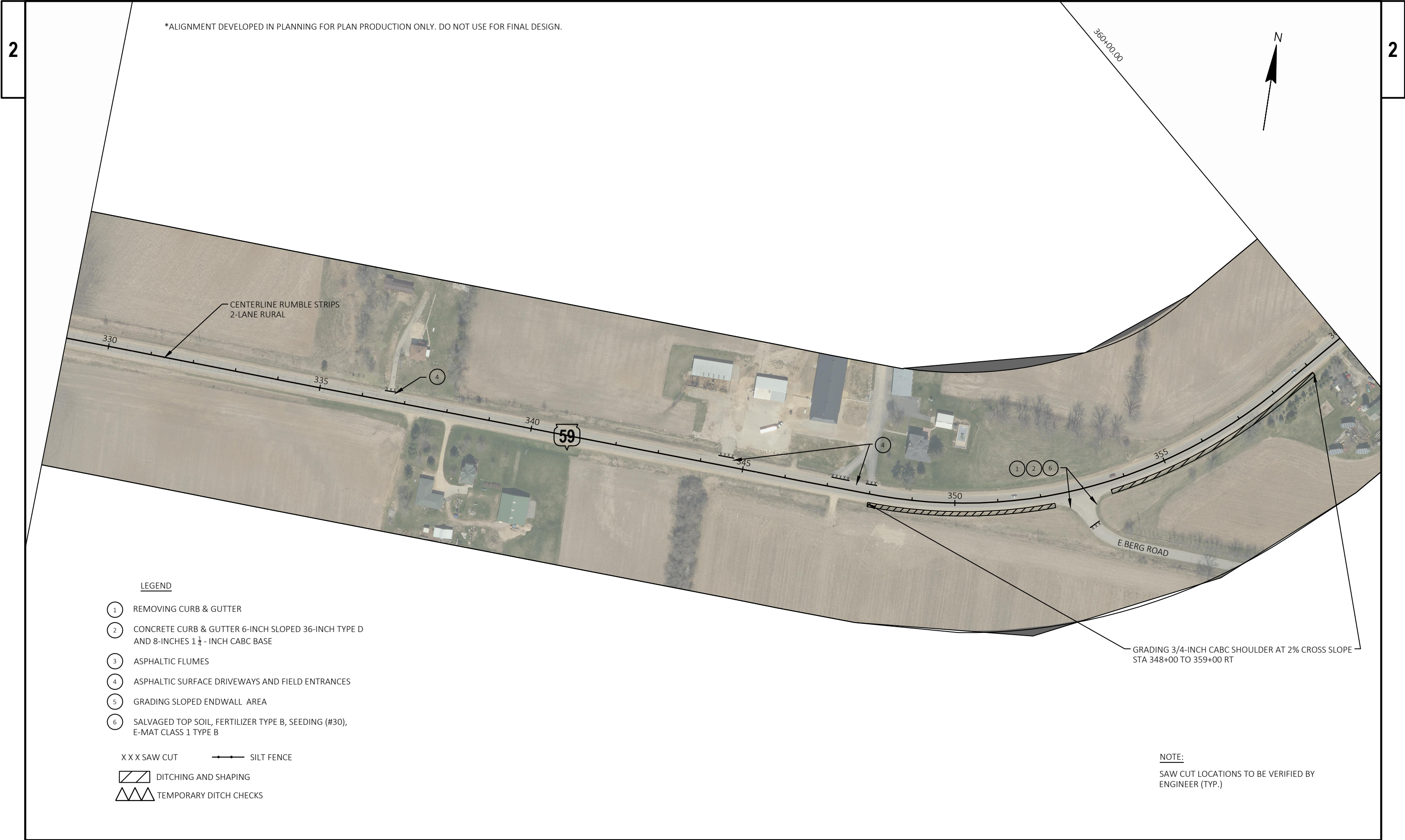
 DITCHING AND SHAPING

 TEMPORARY DITCH CHECKS

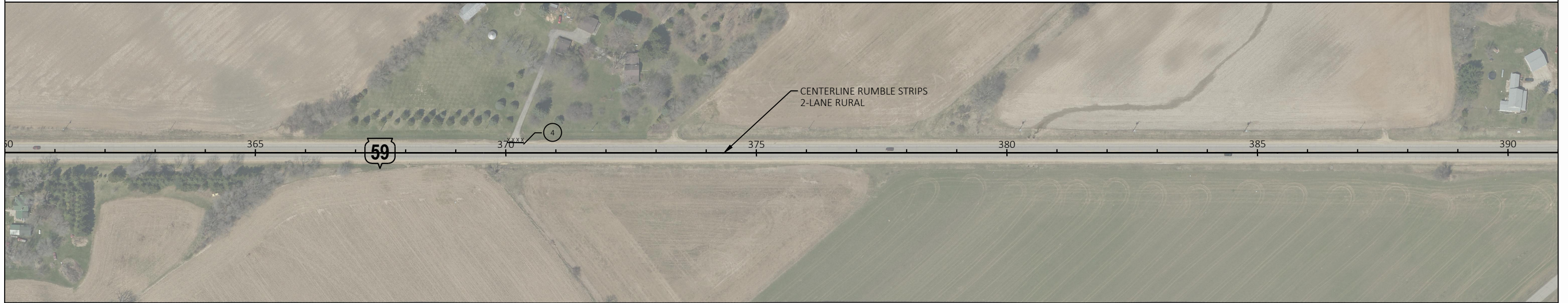
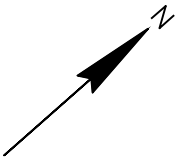
NOTE:

SAW CUT LOCATIONS TO BE VERIFIED BY ENGINEER (TYP.)

298F00100



*ALIGNMENT DEVELOPED IN PLANNING FOR PLAN PRODUCTION ONLY. DO NOT USE FOR FINAL DESIGN.



LEGEND

- ① REMOVING CURB & GUTTER
- ② CONCRETE CURB & GUTTER 6-INCH SLOPED 36-INCH TYPE D AND 8-INCHES 1 $\frac{1}{4}$ - INCH CABG BASE
- ③ ASPHALTIC FLUMES
- ④ ASPHALTIC SURFACE DRIVEWAYS AND FIELD ENTRANCES
- ⑤ GRADING SLOPED ENDWALL AREA
- ⑥ SALVAGED TOP SOIL, FERTILIZER TYPE B, SEEDING (#30), E-MAT CLASS 1 TYPE B

X X X SAW CUT —●— SILT FENCE

 DITCHING AND SHAPING

 TEMPORARY DITCH CHECKS

NOTE:

SAW CUT LOCATIONS TO BE VERIFIED BY ENGINEER (TYP.)

PROJECT NO: 3140-00-72

HWY: STH 59

COUNTY: ROCK

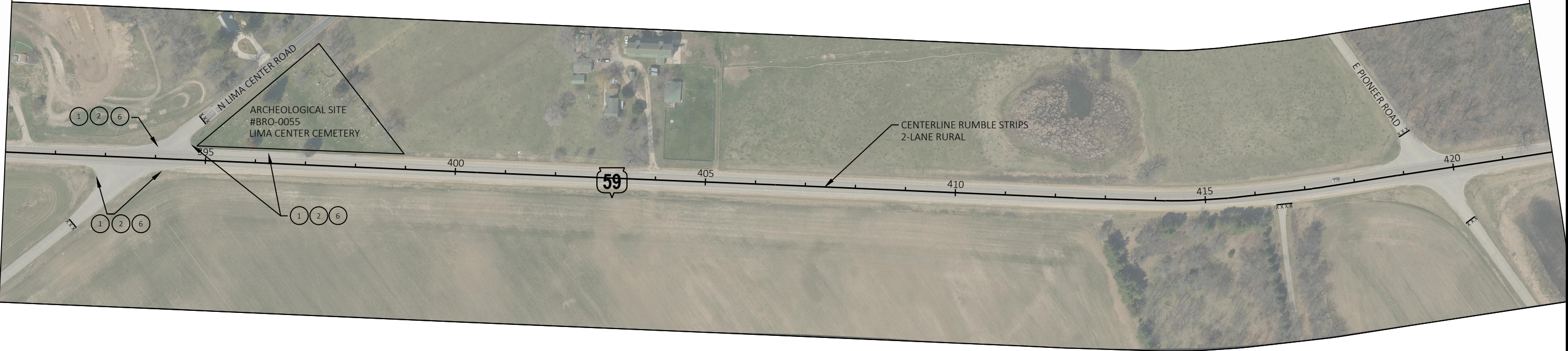
PLAN DETAILS

SHEET

13

E

*ALIGNMENT DEVELOPED IN PLANNING FOR PLAN PRODUCTION ONLY. DO NOT USE FOR FINAL DESIGN.



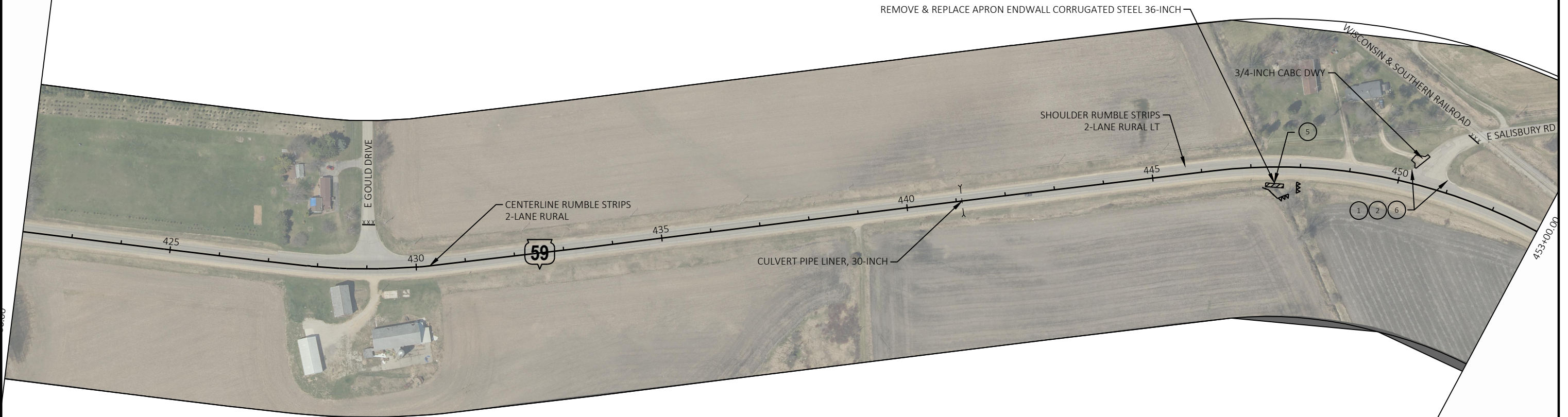
LEGEND

- 1 REMOVING CURB & GUTTER
- 2 CONCRETE CURB & GUTTER 6-INCH SLOPED 36-INCH TYPE D AND 8-INCHES 1 1/4 - INCH CABC BASE
- 3 ASPHALTIC FLUMES
- 4 ASPHALTIC SURFACE DRIVEWAYS AND FIELD ENTRANCES
- 5 GRADING SLOPED ENDWALL AREA
- 6 SALVAGED TOP SOIL, FERTILIZER TYPE B, SEEDING (#30), E-MAT CLASS 1 TYPE B

- X X X SAW CUT
- SILT FENCE
- [Hatched Box] DITCHING AND SHAPING
- [Triangle Box] TEMPORARY DITCH CHECKS

NOTE:
SAW CUT LOCATIONS TO BE VERIFIED BY
ENGINEER (TYP.)

*ALIGNMENT DEVELOPED IN PLANNING FOR PLAN PRODUCTION ONLY. DO NOT USE FOR FINAL DESIGN.



LEGEND

- 1 REMOVING CURB & GUTTER
- 2 CONCRETE CURB & GUTTER 6-INCH SLOPED 36-INCH TYPE D AND 8-INCHES 1 1/4 - INCH CABC BASE
- 3 ASPHALTIC FLUMES
- 4 ASPHALTIC SURFACE DRIVEWAYS AND FIELD ENTRANCES
- 5 GRADING SLOPED ENDWALL AREA
- 6 SALVAGED TOP SOIL, FERTILIZER TYPE B, SEEDING (#30), E-MAT CLASS 1 TYPE B

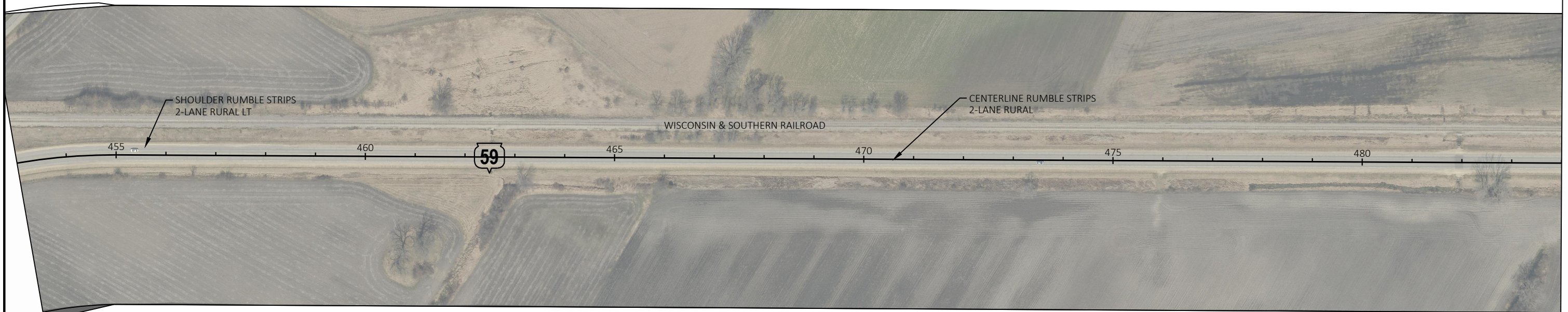
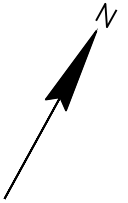
X X X SAW CUT —●— SILT FENCE

 DITCHING AND SHAPING

 TEMPORARY DITCH CHECKS

NOTE:
SAW CUT LOCATIONS TO BE VERIFIED BY
ENGINEER (TYP.)

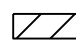
*ALIGNMENT DEVELOPED IN PLANNING FOR PLAN PRODUCTION ONLY. DO NOT USE FOR FINAL DESIGN.



LEGEND

- ① REMOVING CURB & GUTTER
- ② CONCRETE CURB & GUTTER 6-INCH SLOPED 36-INCH TYPE D AND 8-INCHES $1\frac{1}{4}$ - INCH CABG BASE
- ③ ASPHALTIC FLUMES
- ④ ASPHALTIC SURFACE DRIVEWAYS AND FIELD ENTRANCES
- ⑤ GRADING SLOPED ENDWALL AREA
- ⑥ SALVAGED TOP SOIL, FERTILIZER TYPE B, SEEDING (#30), E-MAT CLASS 1 TYPE B

X X X SAW CUT —●— SILT FENCE

 DITCHING AND SHAPING

 TEMPORARY DITCH CHECKS

NOTE:

SAW CUT LOCATIONS TO BE VERIFIED BY ENGINEER (TYP.)

PROJECT NO: 3140-00-72

HWY: STH 59

COUNTY: ROCK

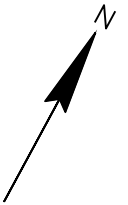
PLAN DETAILS

SHEET

16

E

*ALIGNMENT DEVELOPED IN PLANNING FOR PLAN PRODUCTION ONLY. DO NOT USE FOR FINAL DESIGN.




LEGEND

- 1 REMOVING CURB & GUTTER
- 2 CONCRETE CURB & GUTTER 6-INCH SLOPED 36-INCH TYPE D AND 8-INCHES $1\frac{1}{4}$ - INCH CABG BASE
- 3 ASPHALTIC FLUMES
- 4 ASPHALTIC SURFACE DRIVEWAYS AND FIELD ENTRANCES
- 5 GRADING SLOPED ENDWALL AREA
- 6 SALVAGED TOP SOIL, FERTILIZER TYPE B, SEEDING (#30), E-MAT CLASS 1 TYPE B

X X X SAW CUT —●— SILT FENCE

 DITCHING AND SHAPING

 TEMPORARY DITCH CHECKS

NOTE:

SAW CUT LOCATIONS TO BE VERIFIED BY ENGINEER (TYP.)

PROJECT NO: 3140-00-72

HWY: STH 59

COUNTY: ROCK

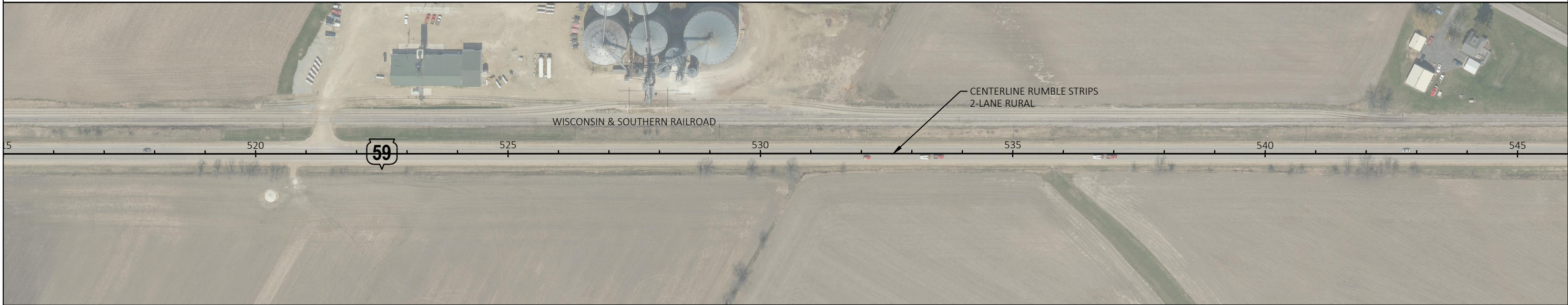
PLAN DETAILS

SHEET

17

E

*ALIGNMENT DEVELOPED IN PLANNING FOR PLAN PRODUCTION ONLY. DO NOT USE FOR FINAL DESIGN.



LEGEND

- 1 REMOVING CURB & GUTTER
- 2 CONCRETE CURB & GUTTER 6-INCH SLOPED 36-INCH TYPE D AND 8-INCHES 1 1/4 - INCH CABG BASE
- 3 ASPHALTIC FLUMES
- 4 ASPHALTIC SURFACE DRIVEWAYS AND FIELD ENTRANCES
- 5 GRADING SLOPED ENDWALL AREA
- 6 SALVAGED TOP SOIL, FERTILIZER TYPE B, SEEDING (#30), E-MAT CLASS 1 TYPE B

X X X SAW CUT —●— SILT FENCE

 DITCHING AND SHAPING

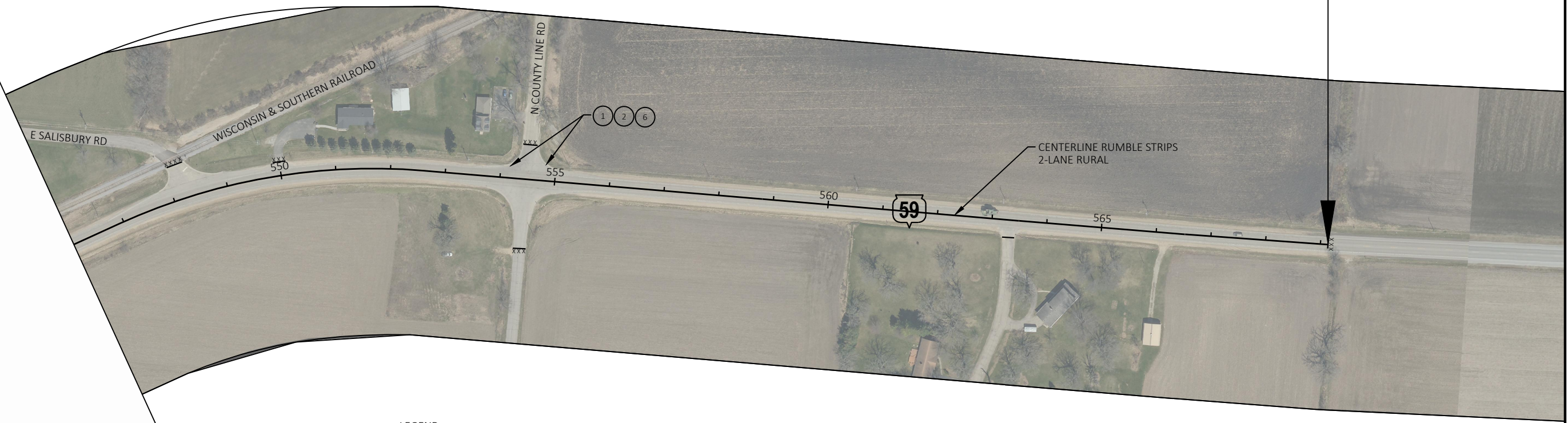
 TEMPORARY DITCH CHECKS

NOTE:
SAW CUT LOCATIONS TO BE VERIFIED BY
ENGINEER (TYP.)

*ALIGNMENT DEVELOPED IN PLANNING FOR PLAN PRODUCTION ONLY. DO NOT USE FOR FINAL DESIGN.



END PROJECT, 3140-00-72
STA 569+14



LEGEND

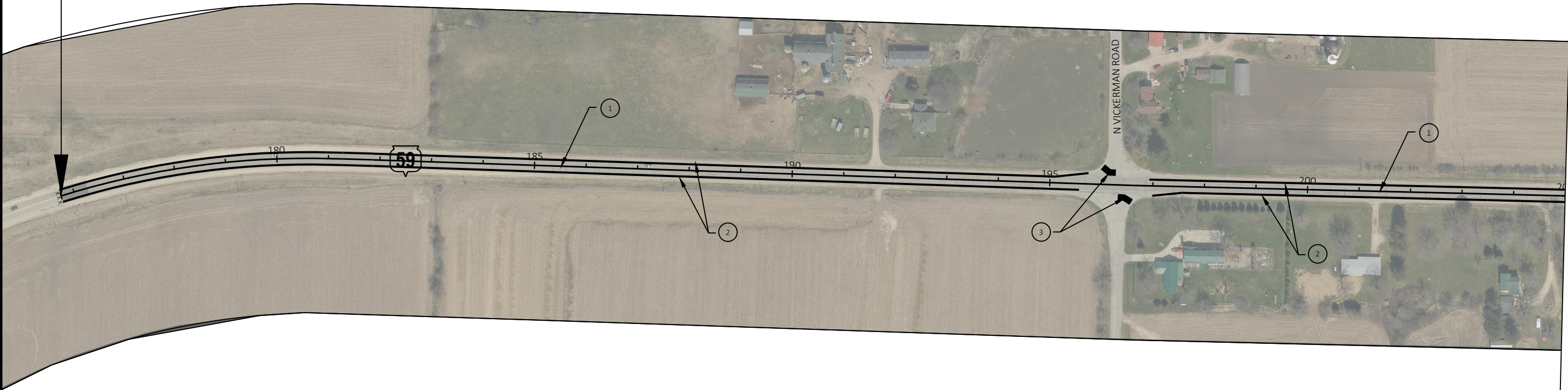
- ① REMOVING CURB & GUTTER
- ② CONCRETE CURB & GUTTER 6-INCH SLOPED 36-INCH TYPE D AND 8-INCHES 1 1/4 - INCH CABC BASE
- ③ ASPHALTIC FLUMES
- ④ ASPHALTIC SURFACE DRIVEWAYS AND FIELD ENTRANCES
- ⑤ GRADING SLOPED ENDWALL AREA
- ⑥ SALVAGED TOP SOIL, FERTILIZER TYPE B, SEEDING (#30), E-MAT CLASS 1 TYPE B

- X X X SAW CUT
- SILT FENCE
- [Hatched Box] DITCHING AND SHAPING
- [Triangle Box] TEMPORARY DITCH CHECKS

NOTE:
SAW CUT LOCATIONS TO BE VERIFIED BY
ENGINEER (TYP.)

*ALIGNMENT DEVELOPED IN PLANNING FOR PLAN PRODUCTION ONLY. DO NOT USE FOR FINAL DESIGN.

BEGIN PROJECT, 3140-00-72
STA 175+74



LEGEND

- 1 PAVEMENT MARKING LINE SAME DAY EPOXY 4-INCH (DOUBLE YELLOW)
- 2 PAVEMENT MARKING LINE GROOVED WET REFLECTIVE EPOXY 4-INCH (WHITE)
- 3 PAVEMENT MARKING STOP LINE EPOXY 18-INCH
- 4 PAVEMENT MARKING LINE EPOXY 4-INCH (WHITE)

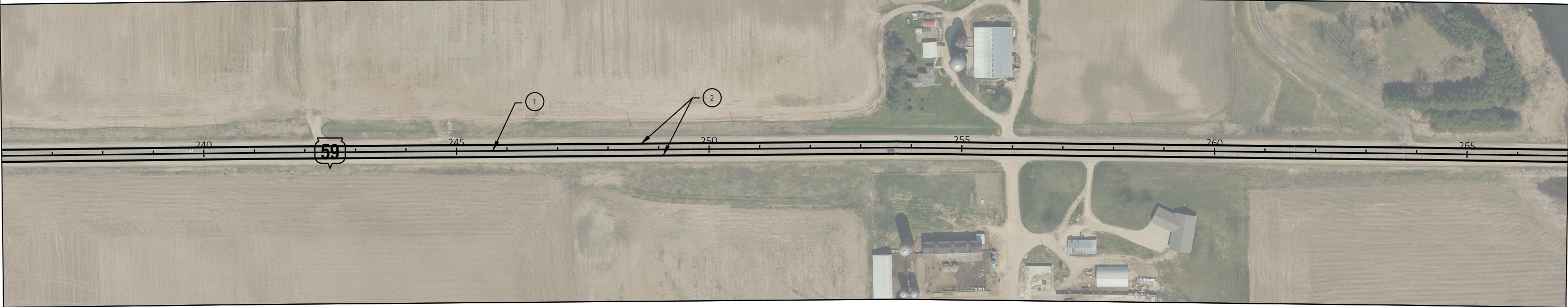
*ALIGNMENT DEVELOPED IN PLANNING FOR PLAN PRODUCTION ONLY. DO NOT USE FOR FINAL DESIGN.



LEGEND

- 1 PAVEMENT MARKING LINE SAME DAY EPOXY 4-INCH (DOUBLE YELLOW)
- 2 PAVEMENT MARKING LINE GROOVED WET REFLECTIVE EPOXY 4-INCH (WHITE)
- 3 PAVEMENT MARKING STOP LINE EPOXY 18-INCH
- 4 PAVEMENT MARKING LINE EPOXY 4-INCH (WHITE)

*ALIGNMENT DEVELOPED IN PLANNING FOR PLAN PRODUCTION ONLY. DO NOT USE FOR FINAL DESIGN.

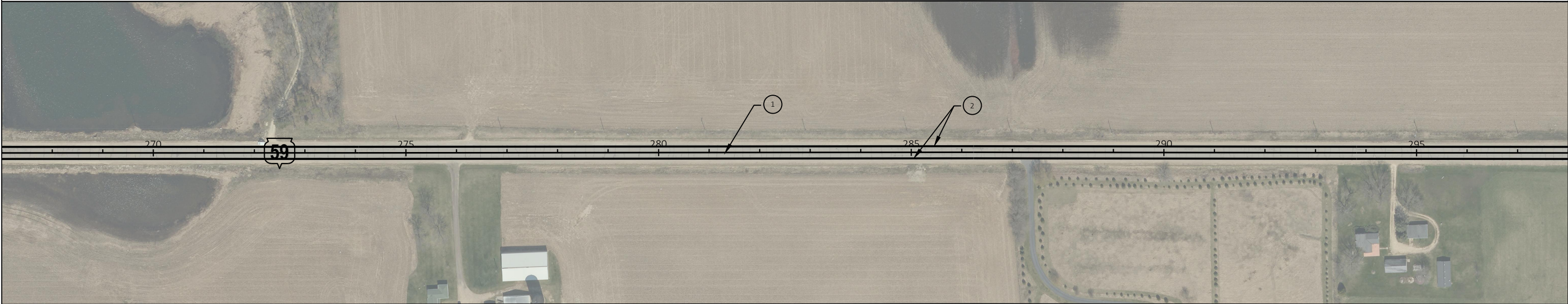


LEGEND

- 1 PAVEMENT MARKING LINE SAME DAY EPOXY 4-INCH (DOUBLE YELLOW)
- 2 PAVEMENT MARKING LINE GROOVED WET REFLECTIVE EPOXY 4-INCH (WHITE)
- 3 PAVEMENT MARKING STOP LINE EPOXY 18-INCH
- 4 PAVEMENT MARKING LINE EPOXY 4-INCH (WHITE)

236+00.00

*ALIGNMENT DEVELOPED IN PLANNING FOR PLAN PRODUCTION ONLY. DO NOT USE FOR FINAL DESIGN.

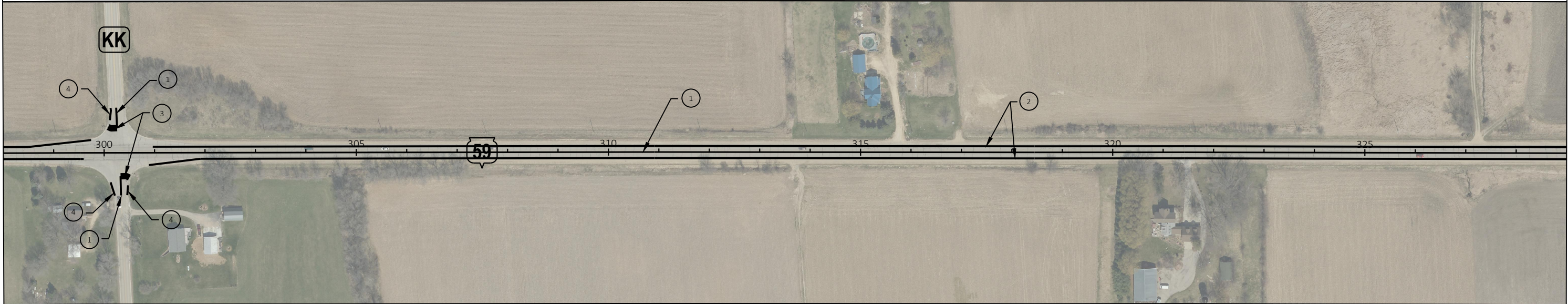


LEGEND

- 1 PAVEMENT MARKING LINE SAME DAY EPOXY 4-INCH (DOUBLE YELLOW)
- 2 PAVEMENT MARKING LINE GROOVED WET REFLECTIVE EPOXY 4-INCH (WHITE)
- 3 PAVEMENT MARKING STOP LINE EPOXY 18-INCH
- 4 PAVEMENT MARKING LINE EPOXY 4-INCH (WHITE)

*ALIGNMENT DEVELOPED IN PLANNING FOR PLAN PRODUCTION ONLY. DO NOT USE FOR FINAL DESIGN.

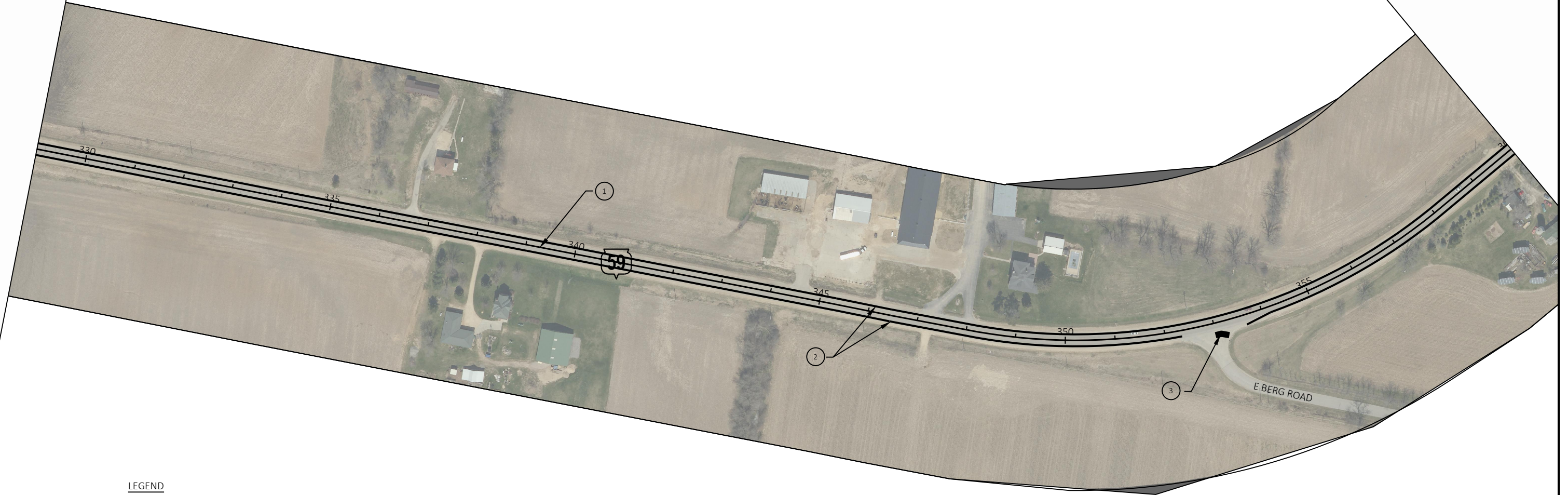
| BENCHMARKS | | | |
|------------|---------|-------|-------------|
| NO. | STATION | ELEV. | DESCRIPTION |
| | | | |



LEGEND

- 1 PAVEMENT MARKING LINE SAME DAY EPOXY 4-INCH (DOUBLE YELLOW)
- 2 PAVEMENT MARKING LINE GROOVED WET REFLECTIVE EPOXY 4-INCH (WHITE)
- 3 PAVEMENT MARKING STOP LINE EPOXY 18-INCH
- 4 PAVEMENT MARKING LINE EPOXY 4-INCH (WHITE)

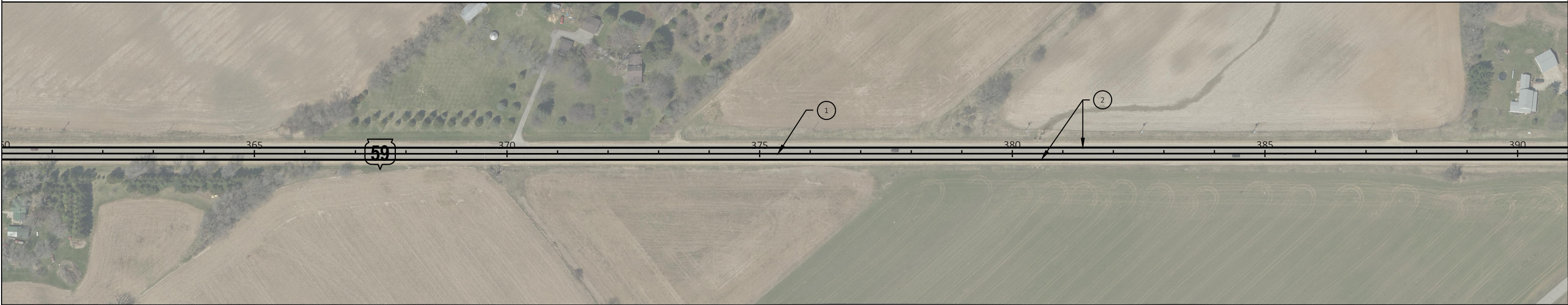
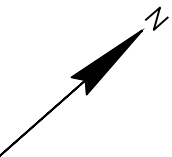
*ALIGNMENT DEVELOPED IN PLANNING FOR PLAN PRODUCTION ONLY. DO NOT USE FOR FINAL DESIGN.



LEGEND

- ① PAVEMENT MARKING LINE SAME DAY EPOXY 4-INCH (DOUBLE YELLOW)
- ② PAVEMENT MARKING LINE GROOVED WET REFLECTIVE EPOXY 4-INCH (WHITE)
- ③ PAVEMENT MARKING STOP LINE EPOXY 18-INCH
- ④ PAVEMENT MARKING LINE EPOXY 4-INCH (WHITE)

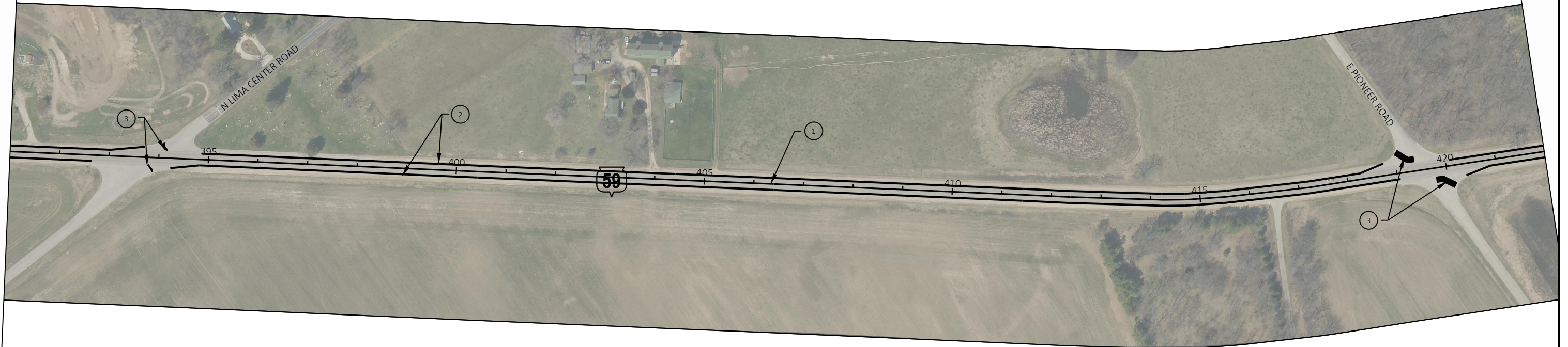
*ALIGNMENT DEVELOPED IN PLANNING FOR PLAN PRODUCTION ONLY. DO NOT USE FOR FINAL DESIGN.



LEGEND

- 1 PAVEMENT MARKING LINE SAME DAY EPOXY 4-INCH (DOUBLE YELLOW)
- 2 PAVEMENT MARKING LINE GROOVED WET REFLECTIVE EPOXY 4-INCH (WHITE)
- 3 PAVEMENT MARKING STOP LINE EPOXY 18-INCH
- 4 PAVEMENT MARKING LINE EPOXY 4-INCH (WHITE)

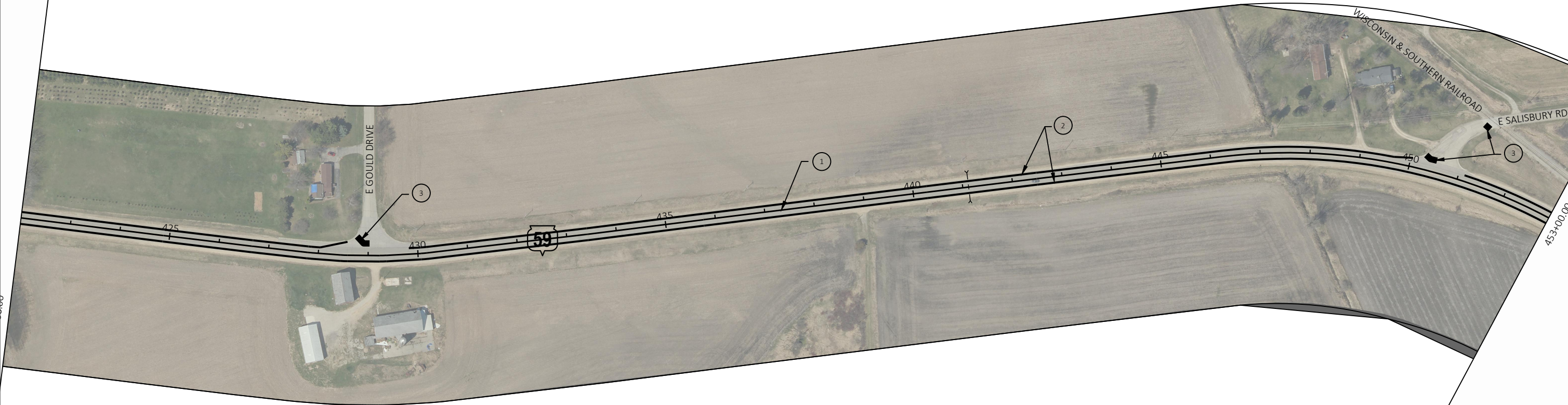
*ALIGNMENT DEVELOPED IN PLANNING FOR PLAN PRODUCTION ONLY. DO NOT USE FOR FINAL DESIGN.



LEGEND

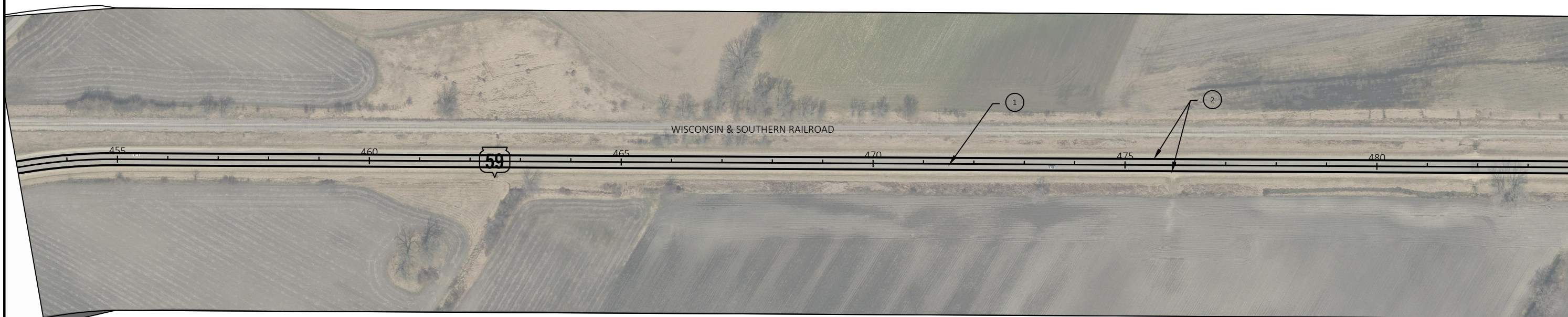
- 1 PAVEMENT MARKING LINE SAME DAY EPOXY 4-INCH (DOUBLE YELLOW)
- 2 PAVEMENT MARKING LINE GROOVED WET REFLECTIVE EPOXY 4-INCH (WHITE)
- 3 PAVEMENT MARKING STOP LINE EPOXY 18-INCH
- 4 PAVEMENT MARKING LINE EPOXY 4-INCH (WHITE)

*ALIGNMENT DEVELOPED IN PLANNING FOR PLAN PRODUCTION ONLY. DO NOT USE FOR FINAL DESIGN.



LEGEND

- 1 PAVEMENT MARKING LINE SAME DAY EPOXY 4-INCH (DOUBLE YELLOW)
- 2 PAVEMENT MARKING LINE GROOVED WET REFLECTIVE EPOXY 4-INCH (WHITE)
- 3 PAVEMENT MARKING STOP LINE EPOXY 18-INCH
- 4 PAVEMENT MARKING LINE EPOXY 4-INCH (WHITE)

LEGEND

- ① PAVEMENT MARKING LINE SAME DAY EPOXY 4-INCH (DOUBLE YELLOW)
- ② PAVEMENT MARKING LINE GROOVED WET REFLECTIVE EPOXY 4-INCH (WHITE)
- ③ PAVEMENT MARKING STOP LINE EPOXY 18-INCH
- ④ PAVEMENT MARKING LINE EPOXY 4-INCH (WHITE)

453+00.00

PROJECT NO: 3140-00-72

HWY: STH 59

COUNTY: ROCK

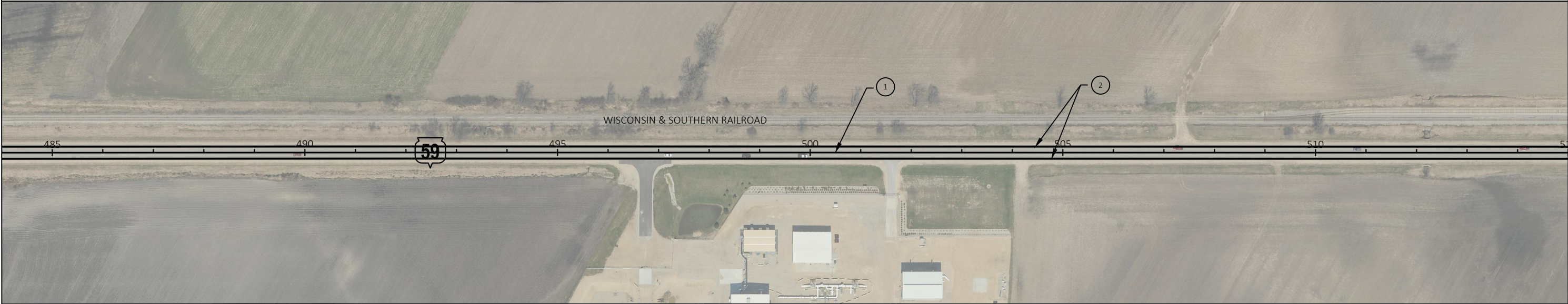
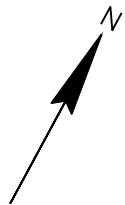
PAVEMENT MARKING

SHEET

29

E

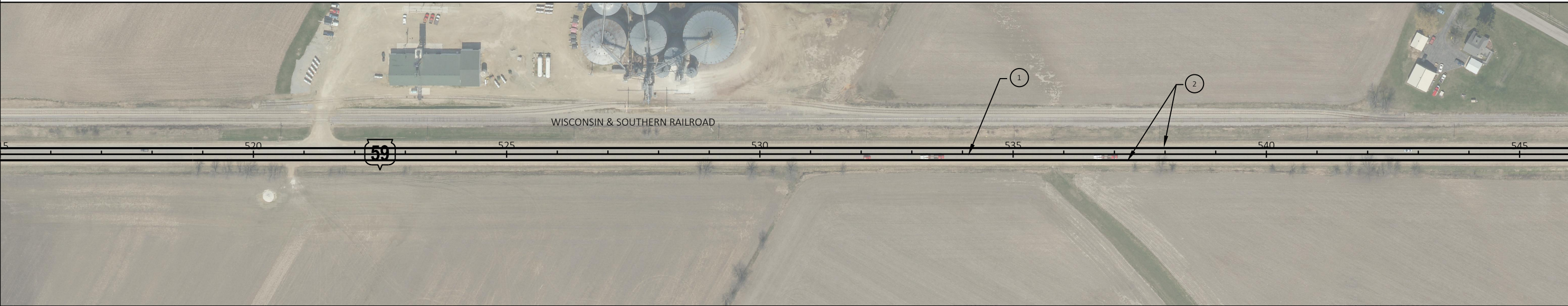
*ALIGNMENT DEVELOPED IN PLANNING FOR PLAN PRODUCTION ONLY. DO NOT USE FOR FINAL DESIGN.



LEGEND

- 1 PAVEMENT MARKING LINE SAME DAY EPOXY 4-INCH (DOUBLE YELLOW)
- 2 PAVEMENT MARKING LINE GROOVED WET REFLECTIVE EPOXY 4-INCH (WHITE)
- 3 PAVEMENT MARKING STOP LINE EPOXY 18-INCH
- 4 PAVEMENT MARKING LINE EPOXY 4-INCH (WHITE)

*ALIGNMENT DEVELOPED IN PLANNING FOR PLAN PRODUCTION ONLY. DO NOT USE FOR FINAL DESIGN.



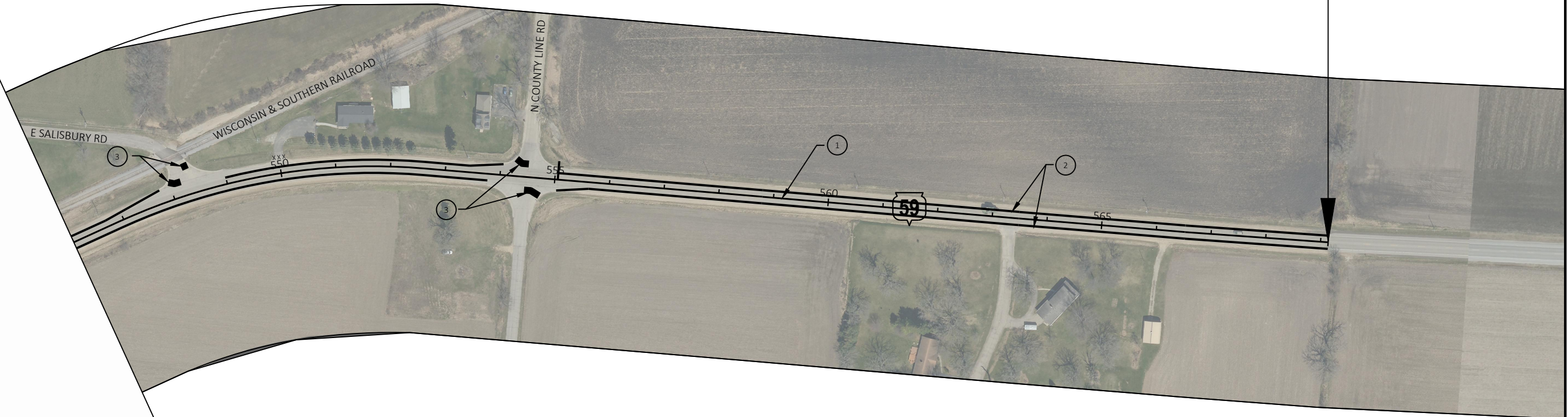
| LEGEND | |
|--------|---|
| 1 | PAVEMENT MARKING LINE SAME DAY EPOXY 4-INCH (DOUBLE YELLOW) |
| 2 | PAVEMENT MARKING LINE GROOVED WET REFLECTIVE EPOXY 4-INCH (WHITE) |
| 3 | PAVEMENT MARKING STOP LINE EPOXY 18-INCH |
| 4 | PAVEMENT MARKING LINE EPOXY 4-INCH (WHITE) |

- | LEGEND | |
|--------|---|
| 1 | PAVEMENT MARKING LINE SAME DAY EPOXY 4-INCH (DOUBLE YELLOW) |
| 2 | PAVEMENT MARKING LINE GROOVED WET REFLECTIVE EPOXY 4-INCH (WHITE) |
| 3 | PAVEMENT MARKING STOP LINE EPOXY 18-INCH |
| 4 | PAVEMENT MARKING LINE EPOXY 4-INCH (WHITE) |

*ALIGNMENT DEVELOPED IN PLANNING FOR PLAN PRODUCTION ONLY. DO NOT USE FOR FINAL DESIGN.

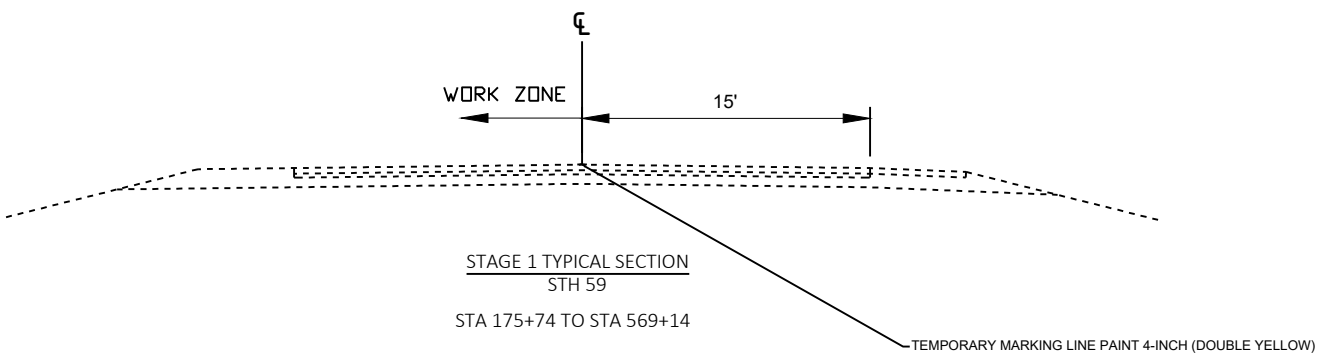


END PAVEMENT MARKING
STA 569+14



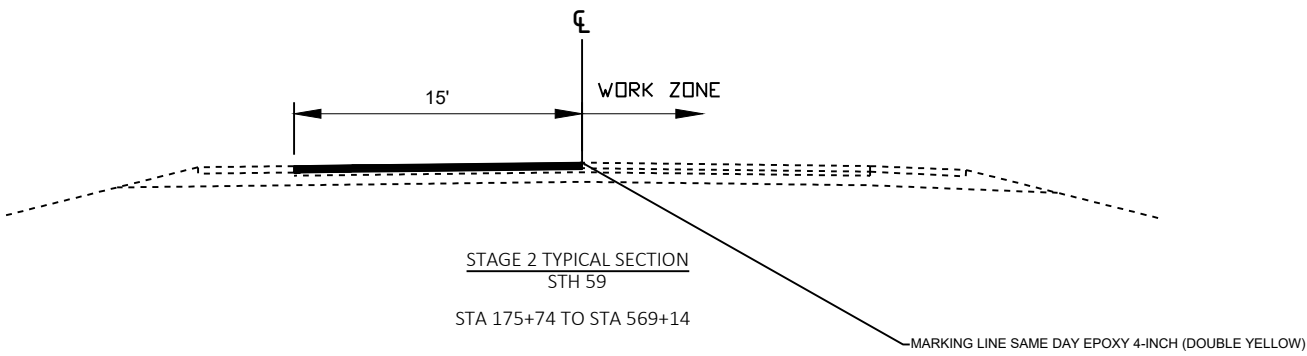
LEGEND

- ① PAVEMENT MARKING LINE SAME DAY EPOXY 4-INCH (DOUBLE YELLOW)
- ② PAVEMENT MARKING LINE GROOVED WET REFLECTIVE EPOXY 4-INCH (WHITE)
- ③ PAVEMENT MARKING STOP LINE EPOXY 18-INCH
- ④ PAVEMENT MARKING LINE EPOXY 4-INCH (WHITE)



- NOTES:
- WORK TO BE DONE UNDER FLAGGING OPERATION
 - ASPHALTIC BASE PATCHES TO BE COMPLETED SAME DAY
 - MILLING AND PAVING LOWER LAYER SAME DAY REQUIRED
 - 1 3/4 - INCH DROP FROM EXISTING PAVEMENT TO LOWER LAYER PAVEMENT
 - PAVING UPPER LAYER REQUIRED WITHIN 72 HOURS OF LOWER LAYER PAVING
 - TEMPORARY CL MARKING REQUIRED END OF EACH WORKING DAY

- WORK OPERATIONS:
- ASPHALTIC BASE PATCHING
 - MILLING
 - PAVING LOWER AND UPPER LAYERS
 - CONCRETE CURB & GUTTER
 - LANDSCAPING



- NOTES:
- WORK TO BE DONE UNDER FLAGGING OPERATION
 - ASPHALTIC BASE PATCHES TO BE COMPLETED SAME DAY
 - MILLING AND PAVING LOWER LAYER SAME DAY REQUIRED
 - 1 3/4 - INCH DROP FROM EXISTING PAVEMENT TO LOWER LAYER PAVEMENT
 - PAVING UPPER LAYER REQUIRED WITHIN 72 HOURS OF LOWER LAYER PAVING
 - TEMPORARY CL MARKING REQUIRED END OF EACH WORKING DAY

- WORK OPERATIONS:
- ASPHALTIC BASE PATCHING
 - MILLING
 - PAVING LOWER AND UPPER LAYERS
 - CONCRETE CURB & GUTTER
 - SHOULDER SLOPE CORRECTION
 - FINAL PAVEMENT MARKING
 - LANDSCAPING