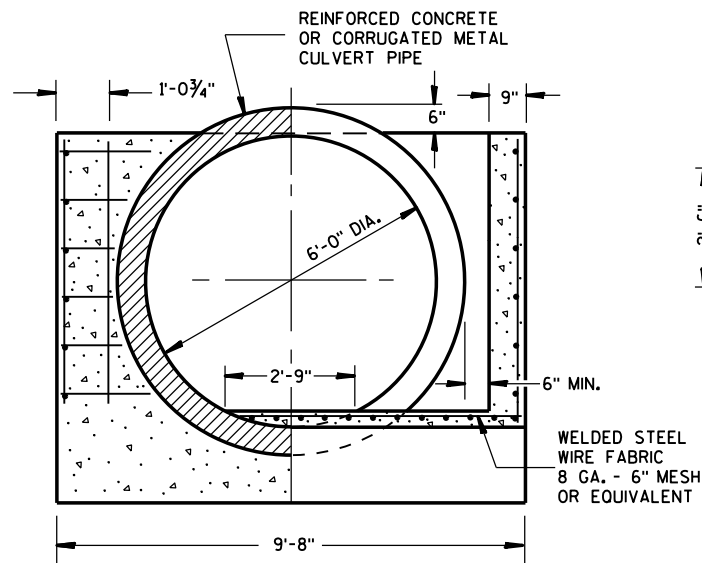
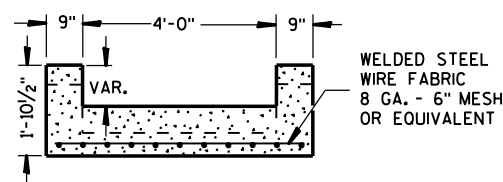


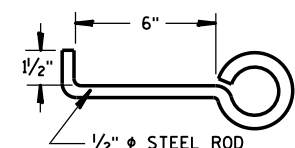
CROSS SECTION
CORRUGATED METAL PIPE
CATTLE PASS



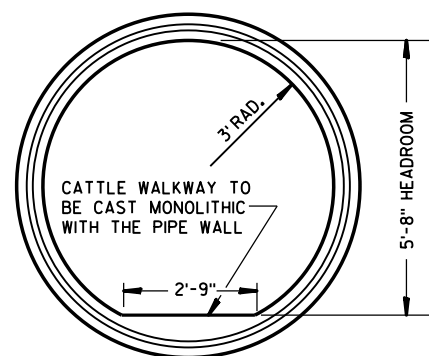
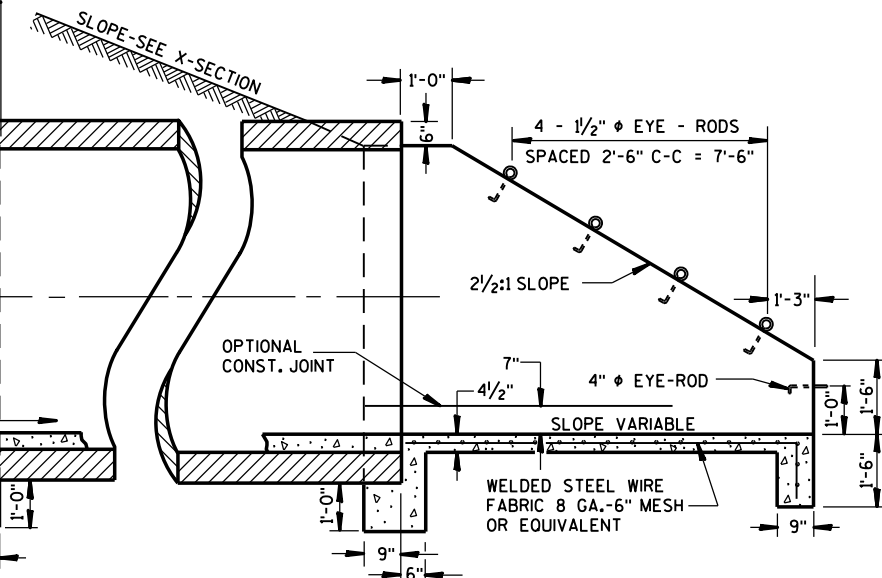
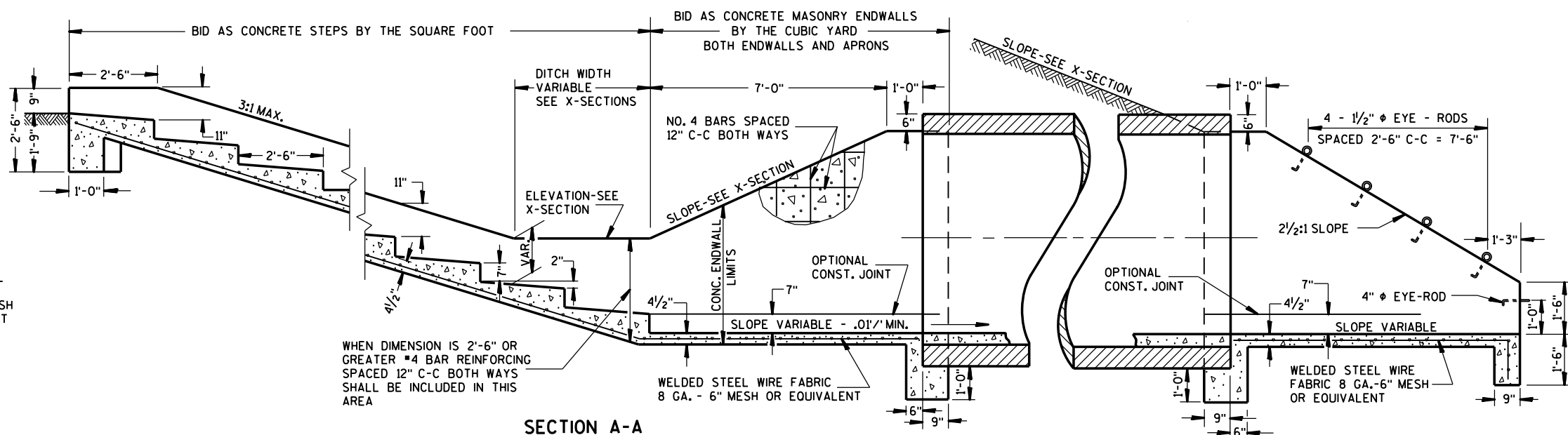
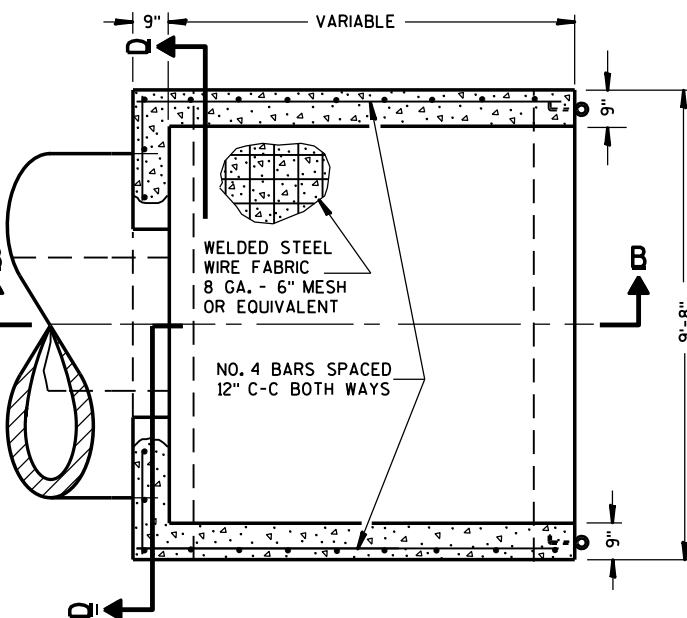
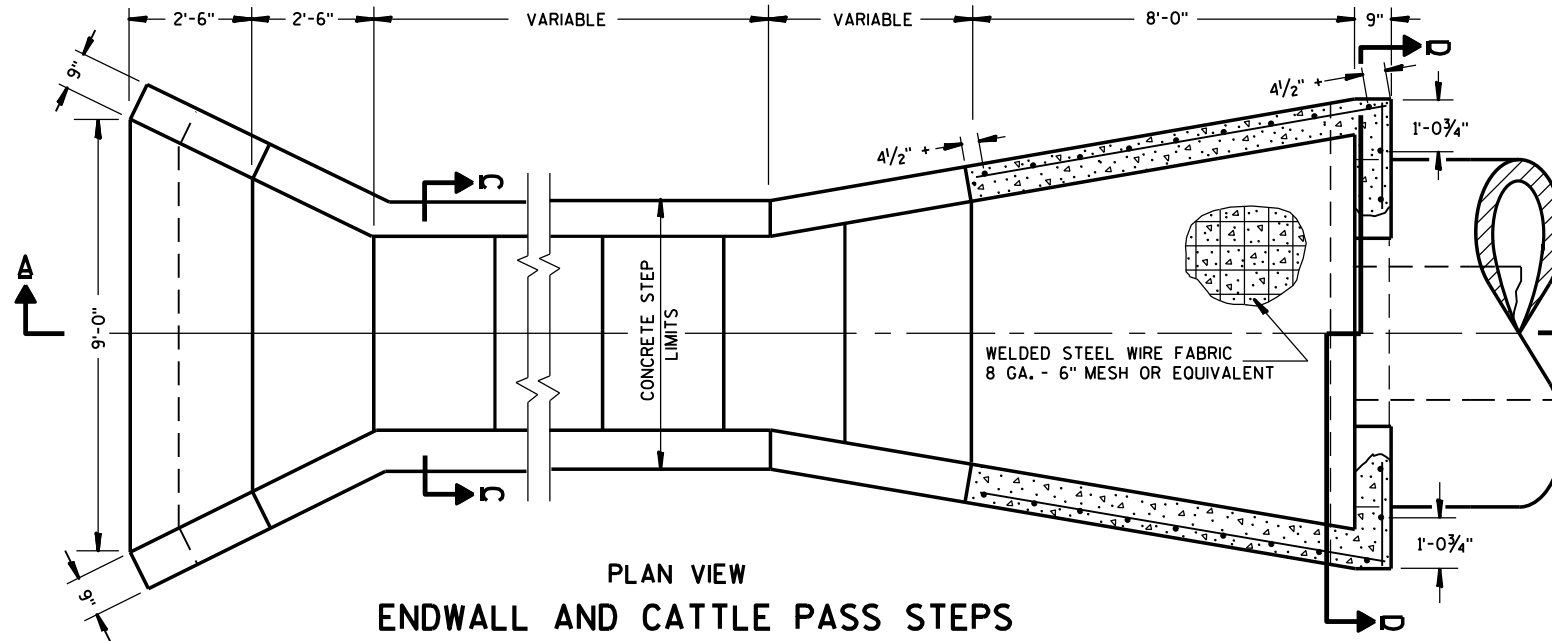
SECTION D-D



SECTION C-C



EYE-ROD ANCHOR



GENERAL NOTES

DETAILS OF CONSTRUCTION, MATERIALS AND WORKMANSHIP NOT SHOWN ON THIS DRAWING SHALL CONFORM TO THE PERTINENT REQUIREMENTS OF THE STANDARD SPECIFICATIONS AND THE APPLICABLE SPECIAL PROVISIONS.

ALL STEEL REINFORCEMENT IN ENDWALLS AND CATTLE PASS STEPS SHALL BE EMBEDDED 2 INCHES CLEAR UNLESS OTHERWISE NOTED.

ALL STEEL REINFORCEMENT OR FABRIC USED AS SHOWN ABOVE SHALL BE INCIDENTAL TO THE BID ITEM OF WHICH IT IS AN INTEGRAL PART.

EYE-RODS FOR FENCE CONNECTIONS SHALL BE PROVIDED BY THE CONTRACTOR AS AN INCIDENTAL TO THE BID ITEM OF CONCRETE MASONRY, ENDWALLS AND SHALL BE GALVANIZED.

CONCRETE USED FOR THE CATTLE WALKWAY WITHIN THE PIPE SHALL BE INCIDENTAL TO THE BID ITEM OF PIPE CATTLE PASS.

DETAILS FOR PIPE CATTLE PASS, CONCRETE ENDWALL AND STEPS

STATE OF WISCONSIN
DEPARTMENT OF TRANSPORTATION

APPROVED
6/6/75 /S/ Harold Fielder
DATE STATE DESIGN ENGINEER FOR HWYS
FHWA

*Details for Pipe Cattle Pass, Concrete Endwalls and Steps***References:**[FDM 11-55-10](#)[FDM 13-1-15](#)**Bid items associated with this drawing:**

<u>ITEM NUMBER</u>	<u>DESCRIPTION</u>	<u>UNIT</u>
504.0900	Concrete Masonry Endwalls	CY
520.5000	Pipe Cattle Pass.....	LF
521.1500	Pipe Cattle Pass Corrugated Steel	LF
522.2000	Pipe Cattle Pass Reinforced Concrete	LF
524.0800	Pipe Cattle Pass Salvaged	LF
602.1500	Concrete Steps	SF

Standardized Special Provisions associated with this drawing:

<u>STSP NUMBER</u>	<u>TITLE</u>
NONE	

Other SDDs associated with this drawing:[SDD 8f4](#) Joint Ties for Concrete Pipe**Design Notes:**

Joint Ties are required for the cattle pass installation and the last 2 sections of culvert pipe if masonry endwalls are not used.

Contact Person:

Ed Lilla (608) 266-2312