

## WisDOT TRAFFIC FORECAST REPORT

PROJECT ID(S): 1022-07-06

ROUTE(S): I-94

Region/COUNTY(IES): Northwest / Dunn

LOCATION: Between STH 128 &amp; Wilson Creek

COMPLETED: 1-22-14

Developed by: Kim Tran

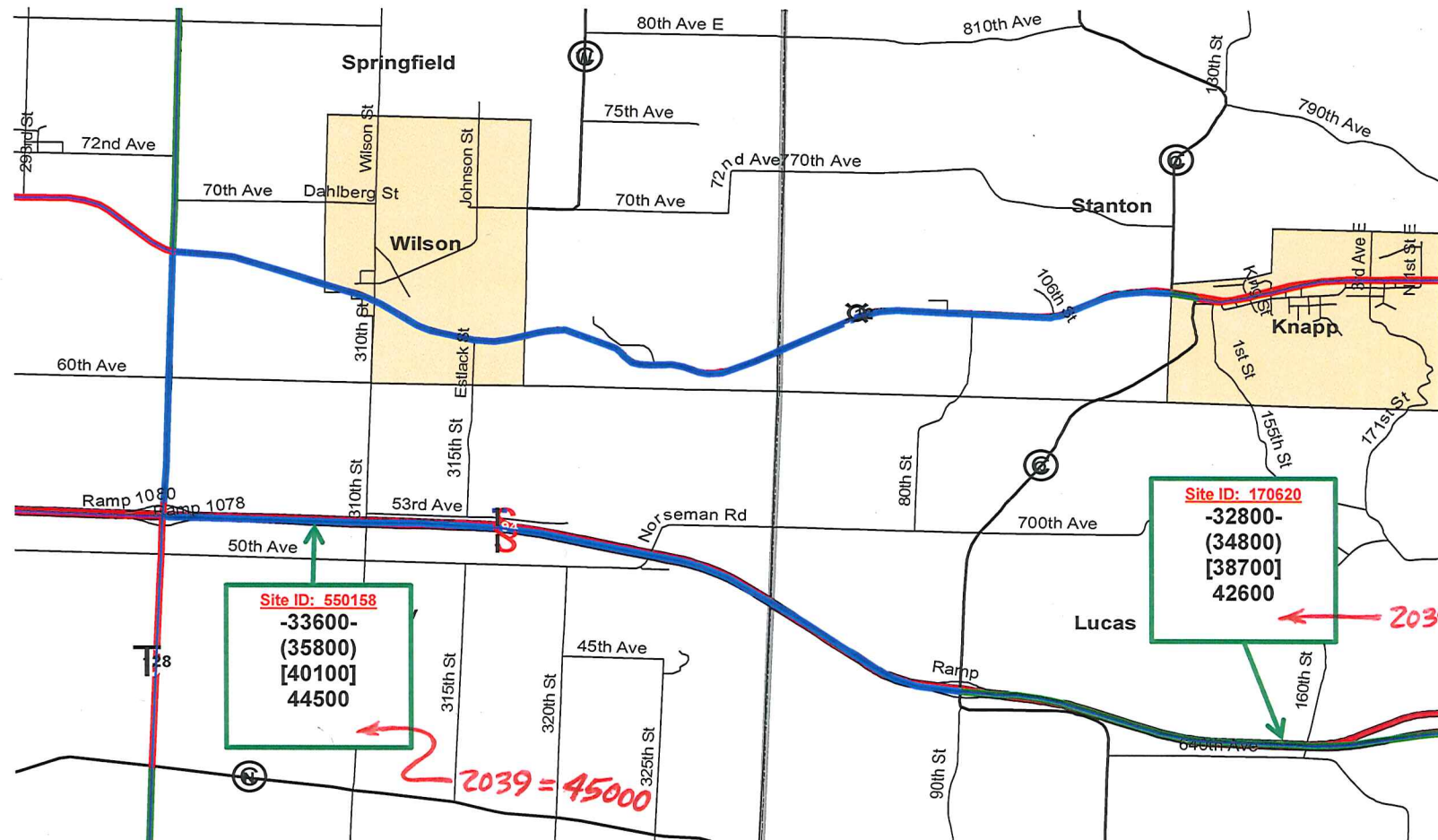
Phone: (608) 264-7265

FAX #: (608) 267-0294

E-Mail: kim.tran@dot.wi.gov



Traffic Forecasting Section; Bureau of Planning and Economic Development; Division of Transportation Investment Management



Design Values (%)				-000- 2013	(000) 2018 AADT
Sites	→	550158			[000] 2028 AADT
Routes	→	I-94			000 2038 AADT
Volume(s):		44500			
K250	9.1				
K100	9.8				
K30	10.5				
P	12.4				
D(Dsgn. Hr.)	58/42				
T(DHV)	16.3				
T(PHV)	8.9				
Truck Class Percents					
Class		550002			
2D	3.6				
3AX	0.7				
2S1+2S2	3.7				
3-S2	15.9				
DBL-BTM	1.5				
TOTAL	25.4%				

## NOTES ON THE FORECAST:

1. This projection assumes that no major new traffic generators will be added to the development already included in the travel demand model.

2. 2013 AADT is based on the continuous counts.

3. I-94 is a factor group III highway (indicating low to moderate fluctuation in traffic from a seasonal perspective). It is functionally classified as a rural interstate for count purposes.

## MORE NOTES ON THE FORECAST:

4. Truck classification percentage totals were based on the 2011 count on site Id# 550002, I-94, 2.0 MI E OF USH 63 - HERSEY, ST. CROIX COUNTY which is estimated at 25.4%.

## WisDOT TRAFFIC FORECAST REPORT

PROJECT ID(S): 1022-07-06 / 76

ROUTE(S): IH 94

Region/COUNTY(IES): NW-Eau Claire / Dunn &amp; St. Croix

LOCATION: STH 128 to Wilson Creek

COMPLETED: 6-9-14

Developed by: Kim Tran

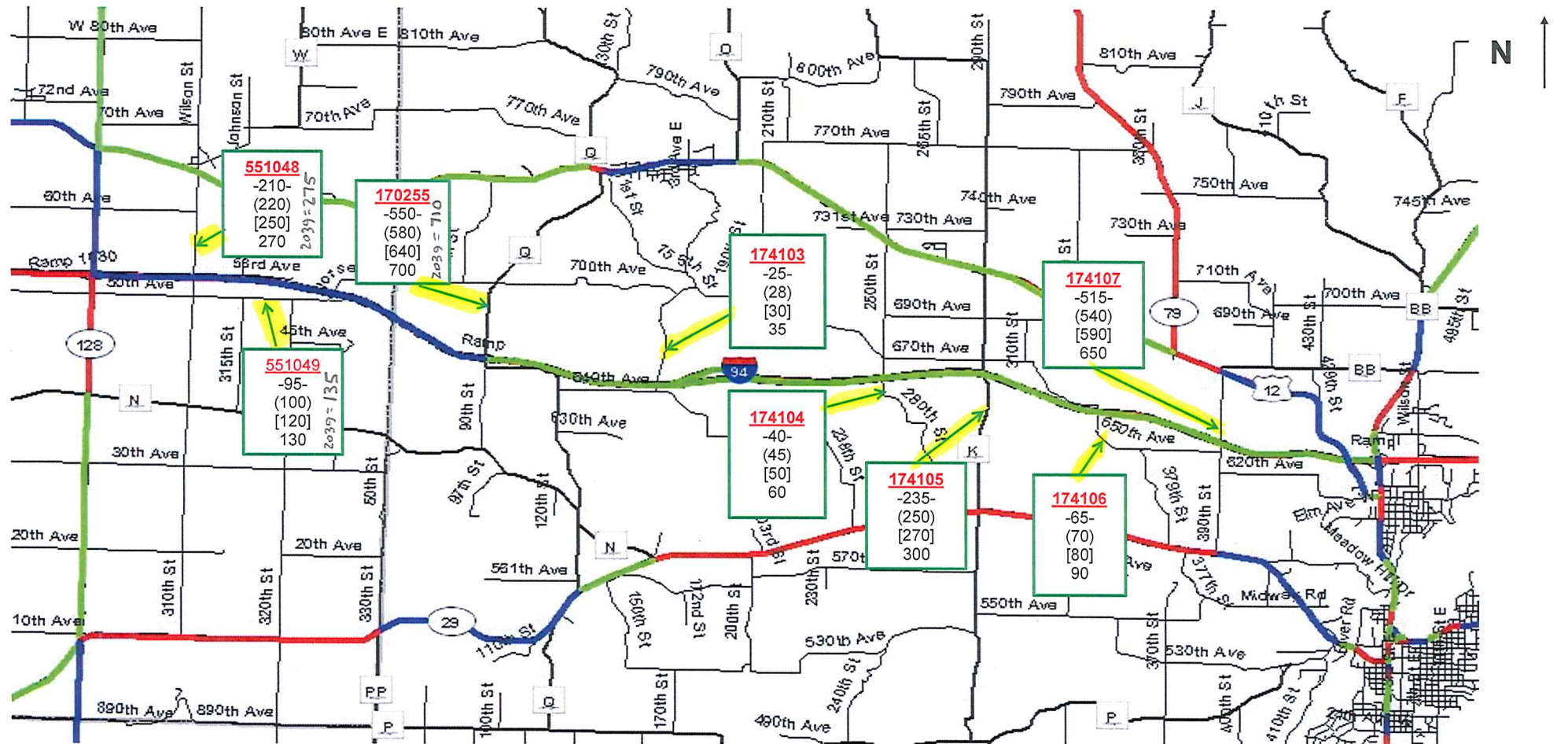
Phone: (608) 264-7265

FAX #: (608) 267-0294

E-Mail: kim.tran@dot.wi.gov



Traffic Forecasting Section; Bureau of Planning and Economic Development; Division of Transportation Investment Management



Site IDs are Colored, Bolded, and Underlined

Design Values (%)			
Site(s)	170255		
Route(s)	CTH Q		
Volume(s)	700		
Site Growth %	1.14%		
K250	19.9		
K100	19.8		
K30	28.2		
P	35.2		
D(Dsgn. Hr.)	60/40		
T(DHV)	3.4		
T(PHV)	1.8		

-000- 2014 Count	(000) 2018 AADT
*000* 2013 Count	[000] 2028 AADT
	000 2038 AADT

Trucks	170255		
AADTT	20		
2D	1.1		
3AX	1.3		
2S1+2S2	1.1		
3-S2	0.4		
DBL-BTM	0.1		
Total %	4.0%		

## NOTES ON THE FORECAST:

1. This projection assumes that no major new traffic generators will be added to the development already included in the travel demand model.

2. Truck classification percentages for CTH Q were taken from a table representative of similar facilities and locations throughout the state of Wisconsin, which is 4%.

3. Truck classification percentages for 160th street are not applicable because the traffic volumes on this road are too small. Please refer to Site # 174103.

## MORE NOTES ON THE FORECAST:

4. CTH Q is a Factor Group IV roadway (indicating low to moderate fluctuation in traffic from a seasonal perspective). It is functionally classified as a Rural Minor Collector for count purposes.

5. 160th street is a Factor Group IV roadway (indicating low to moderate fluctuation in traffic from a seasonal perspective). It is functionally classified as a Rural Minor Arterial for count purposes.