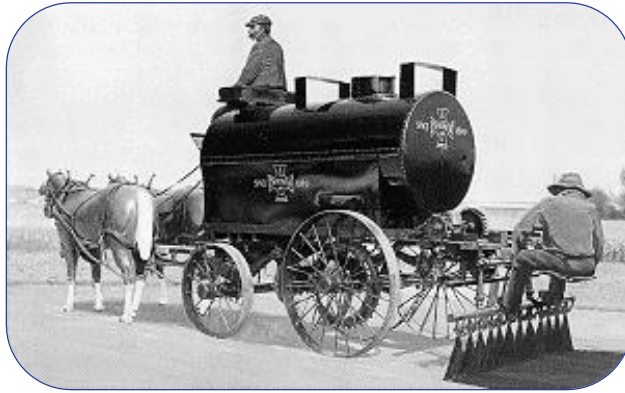


Asphalt Safety



Asphalt Sa

- **Personal**
- **Job Safe**
- **Housekeeping**
- **Traffic Control**



Asphalt Safety



Asphalt Safety



Risks and Exposures

Asphalt Safety

- ▶ Heat Exhaustion
 - Heavy sweating
 - Loss of color
 - Fatigue
 - Cramps
 - Fainting
 - Dizziness
- ▶ Heat Stroke
 - Dry skin
 - Elevated heart rate
 - Confusion
 - Unconsciousness
 - Body temp. over 103°F

Call 911 Immediately and remove individual from the heat



Asphalt Safety

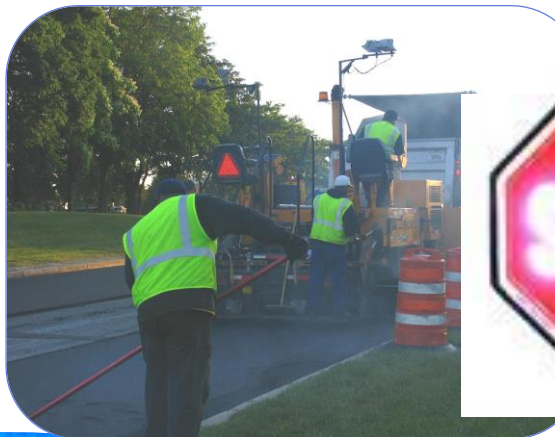


Asphalt Safety



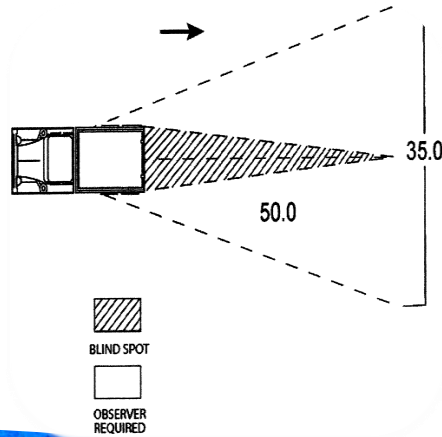
Traffic

Asphalt Safety



Hard work

Asphalt Safety



Backing Equipment



Asphalt Safety



Unstable Loads



Asphalt Safety



Unstable Loads

Asphalt Safety



Complicated Maneuvers

Asphalt Safety



Traffic Control

Asphalt Safety



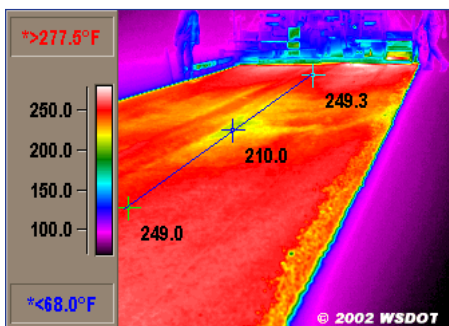
Hazards

Asphalt Safety



Off Hours Work

Asphalt Safety



Asphalt Safety



Tracking

Asphalt Safety



Asphalt Safety



Fire Safety

Asphalt Safety



Sanitation

Asphalt Safety



Apparel

Asphalt Safety



Safe Zones

Wisconsin Statistics

- ▶ 2014 lowest traffic deaths in 71 years (489)
 - 2274 construction zone crashes
 - 12 construction zone fatalities
- ▶ 2015 current total is 528



Asphalt Safety



Hearing Protection

Asphalt Safety



Look Ahead

Asphalt Safety



Watch for Each Other

Asphalt Safety



Expect the Unexpected

