

STATE OF WISCONSIN
DEPARTMENT OF TRANSPORTATION

TRANSPORTATION PROJECT PLAT TITLE SHEET

1420-22-21

CTH V - USH 45 INTERCHANGE

USH 151

FOND DU LAC COUNTY



PROJECT LOCATION

NOTES:

POSITIONS SHOWN ON THIS PLAT ARE WISCONSIN COUNTY COORDINATES, FOND DU LAC COUNTY, NAD 83 (1991) IN US SURVEY FEET. VALUES SHOWN ARE GRID COORDINATES, GRID BEARINGS, AND GRID DISTANCES. GRID DISTANCES MAY BE USED AS GROUND DISTANCES.

RIGHT-OF-WAY MONUMENTS ARE TYPE 2 AND WILL BE PLACED PRIOR TO THE COMPLETION OF THE PROJECT.

RIGHT-OF-WAY BOUNDARIES ARE DEFINED WITH COURSES OF THE PERIMETER OF THE HIGHWAY LANDS REFERENCED TO THE U.S. PUBLIC LAND SURVEY SYSTEM OR OTHER 'SURVEYS OF PUBLIC RECORD'.

PROPERTY LINES SHOWN ON THIS PLAT ARE DRAWN FROM DATA DERIVED FROM MAPS AND DOCUMENTS OF PUBLIC RECORD AND/OR EXISTING OCCUPATIONAL LINES. THIS PLAT MAY NOT BE A TRUE REPRESENTATION OF EXISTING PROPERTY LINES, EXCLUDING RIGHT-OF-WAY LINES, AND SHOULD NOT BE USED AS A SUBSTITUTE FOR AN ACCURATE FIELD SURVEY.

EXISTING HIGHWAY RIGHT-OF-WAY SHOWN HEREIN IS BASED ON THE FOLLOWING POINTS OF REFERENCE: EXISTING HIGHWAY RIGHT-OF-WAY FOR USH 151 ESTABLISHED FROM PREVIOUS PROJECT 1420-05-20 REVISED APRIL 4TH, 2005 AND EXISTING HIGHWAY RIGHT-OF-WAY FOR SIDE ROADS ESTABLISHED FROM CENTERLINE OF EXISTING PAVEMENTS.

EXISTING ACCESS CONTROL ALONG USH 151 ESTABLISHED FROM PREVIOUS PROJECTS 1420-05-20 REVISED APRIL 4TH, 2005.

A TEMPORARY LIMITED EASEMENT (TLE) IS A RIGHT FOR CONSTRUCTION PURPOSES, AS DEFINED HEREIN, INCLUDING THE RIGHT TO OPERATE NECESSARY EQUIPMENT THEREON AND THE RIGHT OF INGRESS AND EGRESS, AS LONG AS REQUIRED FOR SUCH PUBLIC PURPOSE, INCLUDING THE RIGHT TO PRESERVE, PROTECT, REMOVE, OR PLANT THEREON ANY VEGETATION THAT THE HIGHWAY AUTHORITIES MAY DEEM NECESSARY OR DESIRABLE. ALL TLES EXPIRE AT THE COMPLETION OF THE CONSTRUCTION PROJECT FOR WHICH THIS INSTRUMENT IS GIVEN.

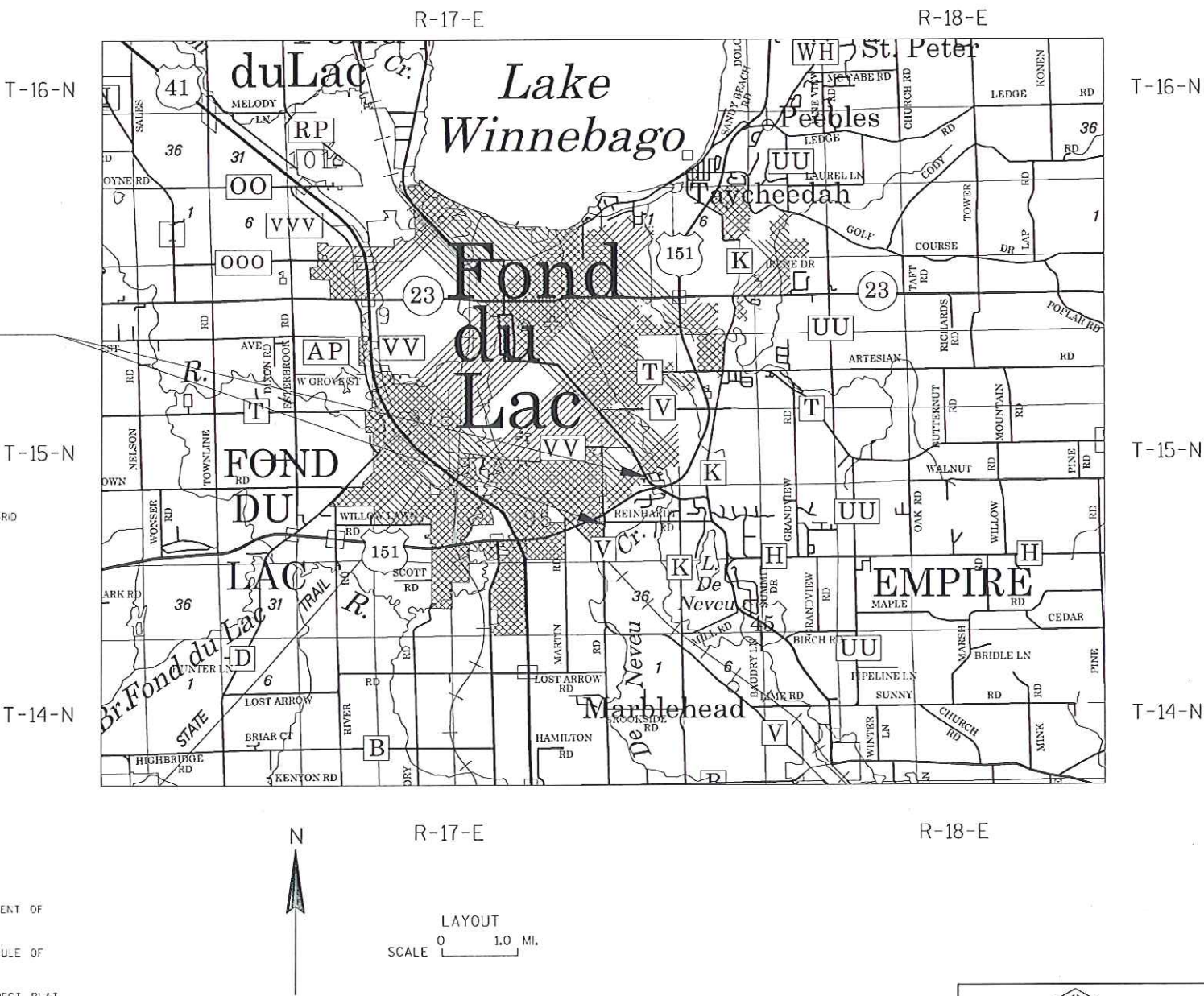
TRANS 233 RESTRICTIONS APPLY

FOR THE LATEST ACCESS/DRIVEWAY INFORMATION, CONTACT THE PLANNING UNIT OF THE WISCONSIN DEPARTMENT OF TRANSPORTATION OFFICE IN GREEN BAY.

PARCEL IDENTIFICATION NUMBERS MAY NOT POINT TO ALL AREAS OF ACQUISITION, AS NOTED ON THE SCHEDULE OF LANDS & INTERESTS REQUIRED.

THE NOTES, CONVENTIONAL SYMBOLS AND ABBREVIATIONS ARE ASSOCIATED WITH EACH TRANSPORTATION PROJECT PLAT FOR PROJECT NUMBER 1420-22-21.

DIMENSIONING FOR THE NEW RIGHT-OF-WAY IS MEASURED ALONG AND PERPENDICULAR TO NEW REFERENCE LINES.



CONVENTIONAL ABBREVIATIONS		
ACCESS POINT/	AP	REFERENCE LINE
DRIVEWAY CONNECTION	AR	RELEASE OF RIGHTS
ACCESS RIGHTS	AR	REMAINING
ACRES	AC.	RIGHT-OF-WAY
AND OTHERS	ET.AL.	SECTION
CENTERLINE	C/L	STATION
CERTIFIED SURVEY MAP	CSM	TEMPORARY LIMITED EASEMENT
CORNER	COR.	TLE
DOCUMENT	DOC.	VOLUME
EASEMENT	EASE.	CURVE DATA
HIGHWAY EASEMENT	H.E.	LONG CHORD
LAND CONTRACT	LC	LONG CHORD BEARING
MONUMENT	MON.	RADIUS
PAGE	P.	DEGREE OF CURVE
PERMANENT LIMITED EASEMENT	PLE	CENTRAL ANGLE OR DELTA
PROPERTY LINE	PL	LENGTH OF CURVE
RECORDED AS	(100)	TANGENT

CONVENTIONAL SYMBOLS		
FOUND IRON PIPE/PIN	IF UNLESS NOTED	PROPOSED R/W LINE
R/W MONUMENT	• (SET)	EXISTING H.E. LINE
R/W STANDARD	Δ (SET)	PROPERTY LINE
SIGN	ISGN	LOT & TIE LINES
SECTION CORNER MONUMENT	SB	SLOPE INTERCEPTS
SECTION CORNER SYMBOL	SB	CORPORATE LIMITS
FEE (HATCH VARIES)	1/2" 1/4"	NO ACCESS (BY PREVIOUS ACQUISITION/CONTROL)
TEMPORARY LIMITED EASEMENT	1/2" 1/4"	NO ACCESS (BY ACQUISITION)
PERMANENT LIMITED EASEMENT	1/2" 1/4"	NO ACCESS (BY STATUTORY AUTHORITY)
R/W BOUNDARY POINT	1/2" 1/4"	SECTION LINE
PARCEL NUMBER	1/2" 1/4"	QUARTER LINE
UTILITY PARCEL NUMBER	1/2" 1/4"	SIXTEENTH LINE
SIGN NUMBER (OFF PREMISE)	1/2" 1/4"	EXISTING CENTERLINE
BUILDING	1/2" 1/4"	PROPOSED REFERENCE LINE
	1/2" 1/4"	PARALLEL OFFSET

CONVENTIONAL UTILITY SYMBOLS

WATER	—W—
GAS	—G—
TELEPHONE	—T—
OVERHEAD	—O—
TRANSMISSION LINES	—E—
ELECTRIC	—E—
CABLE TELEVISION	—TV—
FIBER OPTIC	—FO—
SANITARY SEWER	—SAN—
STORM SEWER	—SS—
NON COMPENSABLE	—N—
POWER POLE	—P—
TELEPHONE POLE	—T—
TELEPHONE PEDESTAL	—X—
ELECTRIC TOWER	—X—



COLEMAN ENGINEERING COMPANY
635 CIRCLE DRIVE
IRON MOUNTAIN, MICHIGAN 49801

RESERVED FOR REGISTER OF DEEDS
PROJECT NUMBER 1420-22-21 - 4.01
SHEET 2 OF 2
AMENDMENT NO. 1

TRANSPORTATION PROJECT PLAT NO: 1420-22-21 -4.01

THAT PART OF THE SW 1/4-SW 1/4, NW 1/4-SW 1/4 AND THE NE 1/4-SW 1/4 OF SECTION 25, TOWNSHIP 15 NORTH, RANGE 17 EAST, TOWN OF FOND DU LAC, FOND DU LAC COUNTY, WISCONSIN

RELOCATION ORDER USH 151 FOND DU LAC COUNTY

TO PROPERLY ESTABLISH, LAY OUT, WIDEN, ENLARGE, EXTEND, CONSTRUCT, RECONSTRUCT, IMPROVE, OR MAINTAIN A PORTION OF THE HIGHWAY DESIGNATED ABOVE, THE STATE OF WISCONSIN DEPARTMENT OF TRANSPORTATION DEEMS IT NECESSARY TO RELOCATE OR CHANGE SAID HIGHWAY AND ACQUIRE CERTAIN LANDS AND INTERESTS OR RIGHTS IN LANDS FOR THE ABOVE PROJECT.

TO EFFECT THIS CHANGE, PURSUANT TO AUTHORITY GRANTED UNDER SUBSECTIONS 84.02 (3), 84.09 AND 84.30 WISCONSIN STATUTES, THE DEPARTMENT OF TRANSPORTATION HEREBY ORDERS THAT:
1. THAT PORTION OF SAID HIGHWAY AS SHOWN ON THIS PLAT IS LAYED OUT AND ESTABLISHED TO THE LINES AND WIDTHS AS SO SHOWN FOR THE ABOVE PROJECT.
2. THE LANDS OR INTERESTS OR RIGHTS IN LANDS AS SHOWN ON THIS PLAT ARE REQUIRED BY THE DEPARTMENT FOR THE ABOVE PROJECT AND SHALL BE ACQUIRED IN THE NAME OF THE STATE OF WISCONSIN, PURSUANT TO THE PROVISIONS OF SECTION 84.09 (1) OR (2), WISCONSIN STATUTES.

BANDICOOT LIMITED PARTNERSHIP
TAX ID. T09-15-17-25-07-001-00
CSM# 327, V.3, P. 126, DOC. 262440

PI STA = 123+62.12"V"
N = 372100.655
E = 824135.089
DELTA = 36°38'47"
D = 41°31'07"
T = 45.70'
L = 88.27'
R = 138.00'
PRC STA = 123+16.42"V"
PT STA = 124+04.68"V"

BANDICOOT LIMITED PARTNERSHIP
TAX ID. T09-15-17-25-08-001-00
DOC. 880968

SCALE, FEET
0 100 200

SEE PLAT NO.-4.02

RESERVED FOR REGISTER OF DEEDS
PROJECT NUMBER 1420-22-21 - 4.01
SHEET 1 OF 2
AVENUE NO...

CITY

SECTION 15
T 15 N
R 17 E
N = 372144.190
E = 823869.966

SECTION 17
T 15 N
R 17 E
N = 372144.190
E = 823869.966

SECTION 25
T 15 N
R 17 E
N = 372144.190
E = 823869.966

SECTION 26
T 15 N
R 17 E
N = 372144.190
E = 823869.966

SECTION 36
T 15 N
R 17 E
N = 372144.190
E = 823869.966

SECTION 37
T 15 N
R 17 E
N = 372144.190
E = 823869.966

SECTION 38
T 15 N
R 17 E
N = 372144.190
E = 823869.966

SECTION 39
T 15 N
R 17 E
N = 372144.190
E = 823869.966

SECTION 40
T 15 N
R 17 E
N = 372144.190
E = 823869.966

SECTION 15
T 15 N
R 17 E
N = 372144.190
E = 823869.966

SECTION 17
T 15 N
R 17 E
N = 372144.190
E = 823869.966

SECTION 25
T 15 N
R 17 E
N = 372144.190
E = 823869.966

SECTION 26
T 15 N
R 17 E
N = 372144.190
E = 823869.966

SECTION 36
T 15 N
R 17 E
N = 372144.190
E = 823869.966

SECTION 37
T 15 N
R 17 E
N = 372144.190
E = 823869.966

SECTION 38
T 15 N
R 17 E
N = 372144.190
E = 823869.966

SECTION 39
T 15 N
R 17 E
N = 372144.190
E = 823869.966

SECTION 40
T 15 N
R 17 E
N = 372144.190
E = 823869.966

SECTION 15
T 15 N
R 17 E
N = 372144.190
E = 823869.966

SECTION 17
T 15 N
R 17 E
N = 372144.190
E = 823869.966

SECTION 25
T 15 N
R 17 E
N = 372144.190
E = 823869.966

SECTION 26
T 15 N
R 17 E
N = 372144.190
E = 823869.966

SECTION 36
T 15 N
R 17 E
N = 372144.190
E = 823869.966

SECTION 37
T 15 N
R 17 E
N = 372144.190
E = 823869.966

SECTION 38
T 15 N
R 17 E
N = 372144.190
E = 823869.966

SECTION 39
T 15 N
R 17 E
N = 372144.190
E = 823869.966

SECTION 40
T 15 N
R 17 E
N = 372144.190
E = 823869.966

SECTION 15
T 15 N
R 17 E
N = 372144.190
E = 823869.966

SECTION 17
T 15 N
R 17 E
N = 372144.190
E = 823869.966

SECTION 25
T 15 N
R 17 E
N = 372144.190
E = 823869.966

SECTION 26
T 15 N
R 17 E
N = 372144.190
E = 823869.966

SECTION 36
T 15 N
R 17 E
N = 372144.190
E = 823869.966

SECTION 37
T 15 N
R 17 E
N = 372144.190
E = 823869.966

SECTION 38
T 15 N
R 17 E
N = 372144.190
E = 823869.966

SECTION 39
T 15 N
R 17 E
N = 372144.190
E = 823869.966

SECTION 40
T 15 N
R 17 E
N = 372144.190
E = 823869.966

SECTION 15
T 15 N
R 17 E
N = 372144.190
E = 823869.966

SECTION 17
T 15 N
R 17 E
N = 372144.190
E = 823869.966

SECTION 25
T 15 N
R 17 E
N = 372144.190
E = 823869.966

SECTION 26
T 15 N
R 17 E
N = 372144.190
E = 823869.966

SECTION 36
T 15 N
R 17 E
N = 372144.190
E = 823869.966

SECTION 37
T 15 N
R 17 E
N = 372144.190
E = 823869.966

SECTION 38
T 15 N
R 17 E
N = 372144.190
E = 823869.966

SECTION 39
T 15 N
R 17 E
N = 372144.190
E = 823869.966

SECTION 40
T 15 N
R 17 E
N = 372144.190
E = 823869.966

SECTION 15
T 15 N
R 17 E
N = 372144.190
E = 823869.966

SECTION 17
T 15 N
R 17 E
N = 372144.190
E = 823869.966

SECTION 25
T 15 N
R 17 E
N = 372144.190
E = 823869.966

SECTION 26
T 15 N
R 17 E
N = 372144.190
E = 823869.966

SECTION 36
T 15 N
R 17 E
N = 372144.190
E = 823869.966

SECTION 37
T 15 N
R 17 E
N = 372144.190
E = 823869.966

SECTION 38
T 15 N
R 17 E
N = 372144.190
E = 823869.966

SECTION 39
T 15 N
R 17 E
N = 372144.190
E = 823869.966

SECTION 40
T 15 N
R 17 E
N = 372144.190
E = 823869.966

SECTION 15
T 15 N
R 17 E
N = 372144.190
E = 823869.966

SECTION 17
T 15 N
R 17 E
N = 372144.190
E = 823869.966

SECTION 25
T 15 N
R 17 E
N = 372144.190
E = 823869.966

SECTION 26
T 15 N
R 17 E
N = 372144.190
E = 823869.966

SECTION 36
T 15 N
R 17 E
N = 372144.190
E = 823869.966

SECTION 37
T 15 N
R 17 E
N = 372144.190
E = 823869.966

SECTION 38
T 15 N
R 17 E
N = 372144.190
E = 823869.966

SECTION 39
T 15 N
R 17 E
N = 372144.190
E = 823869.966

SECTION 40
T 15 N
R 17 E
N = 372144.190
E = 823869.966

SECTION 15
T 15 N
R 17 E
N = 372144.190
E = 823869.966

SECTION 17
T 15 N
R 17 E
N = 372144.190
E = 823869.966

SECTION 25
T 15 N
R 17 E
N = 372144.190
E = 823869.966

SECTION 26
T 15 N
R 17 E
N = 372144.190
E = 823869.966

SECTION 36
T 15 N
R 17 E
N = 372144.190
E = 823869.966

SECTION 37
T 15 N
R 17 E
N = 372144.190
E = 823869.966

SECTION 38
T 15 N
R 17 E
N = 372144.190
E = 823869.966

SECTION 39
T 15 N
R 17 E
N = 372144.190
E = 823869.966

SECTION 40
T 15 N
R 17 E
N = 372144.190
E = 823869.966

SECTION 15
T 15 N
R 17 E
N = 372144.190
E = 823869.966

SECTION 17
T 15 N
R 17 E
N = 372144.190
E = 823869.966

SECTION 25
T 15 N
R 17 E
N = 372144.190
E = 823869.966

SECTION 26
T 15 N
R 17 E
N = 372144.190
E = 823869.966

SECTION 36
T 15 N
R 17 E
N = 372144.190
E = 823869.966

SECTION 37
T 15 N
R 17 E
N = 372144.190
E = 823869.966

SECTION 38
T 15 N
R 17 E
N = 372144.190
E = 823869.966

SECTION 39
T 15 N
R 17 E
N = 372144.190
E = 823869.966

SECTION 40
T 15 N
R 17 E
N = 372144.190
E = 823869.966

SECTION 15
T 15 N
R 17 E
N = 372144.190
E = 823869.966

SECTION 17
T 15 N
R 17 E
N = 372144.190
E = 823869.966

SECTION 25
T 15 N
R 17 E
N = 372144.190
E = 823869.966

SECTION 26
T 15 N
R 17 E
N = 372144.190
E = 823869.966

SECTION 36
T 15 N
R 17 E
N = 372144.190
E = 823869.966

SECTION 37
T 15 N
R 17 E
N = 372144.190
E = 823869.966

SECTION 38
T 15 N
R 17 E
N = 372144.190
E = 823869.966

SECTION 39
T 15 N
R 17 E
N = 372144.190
E = 823869.966

SECTION 40
T 15 N
R 17 E
N = 372144.190
E = 823869.966

SECTION 15
T 15 N
R 17 E
N = 372144.190
E = 823869.966

SECTION 17
T 15 N
R 17 E
N = 372144.190
E = 823869.966

SECTION 25
T 15 N
R 17 E
N = 372144.190
E = 823869.966

SECTION 26
T 15 N
R 17 E
N = 372144.190
E = 823869.966

SECTION 36
T 15 N
R 17 E
N = 372144.190
E = 823869.966

SECTION 37
T 15 N
R 17 E
N = 372144.190
E = 823869.966

SECTION 38
T 15 N
R 17 E
N = 372144.190
E = 823869.966

SECTION 39
T 15 N
R 17 E
N = 372144.190
E = 823869.966

SECTION 40
T 15 N
R 17 E
N = 372144.190
E = 823869.966

SECTION 15
T 15 N
R 17 E
N = 372144.190
E = 823869.966

SECTION 17
T 15 N
R 17 E
N = 372144.190
E = 823869.966

SECTION 25
T 15 N
R 17 E
N = 372144.190
E = 823869.966

SECTION 26
T 15 N
R 17 E
N = 372144.190
E = 823869.966

SECTION 36
T 15 N
R 17 E
N = 372144.190
E = 823869.966

SECTION 37
T 15 N
R 17 E
N = 372144.190
E = 823869.966

SECTION 38
T 15 N
R 17 E
N = 372144.190
E = 823869.966

SECTION 39
T 15 N
R 17 E
N = 372144.190
E = 823869.966

SECTION 40
T 15 N
R 17 E
N = 372144.190
E = 823869.966

SECTION 15
T 15 N
R 17 E
N = 372144.190
E = 823869.966

SECTION 17
T 15 N
R 17 E
N = 372144.190
E = 823869.966

SECTION 25
T 15 N
R 17 E
N = 372144.190
E = 823869.966

SECTION 26
T 15 N
R 17 E
N = 372144.190
E = 823869.966

SECTION 36
T 15 N
R 17 E
N = 372144.190
E = 823869.966

SECTION 37
T 15 N
R 17 E
N = 372144.190
E = 823869.966

SECTION 38
T 15 N
R 17 E
N = 372144.190
E = 823869.966

SECTION 39
T 15 N
R 17 E
N = 372144.190
E = 823869.966

SECTION 40
T 15 N
R 17 E
N = 372144.190
E = 823869.966

SECTION 15
T 15 N
R 17 E
N = 372144.190
E = 823869.966

SECTION 17
T 15 N
R 17 E
N = 372144.190
E = 823869.966

SECTION 25
T 15 N
R 17 E
N = 372144.190
E = 823869.966

SECTION 26
T 15 N
R 17 E
N = 372144.190
E = 823869.966

SECTION 36
T 15 N
R 17 E
N = 372144.190
E = 823869.966

SECTION 37
T 15 N
R 17 E
N = 372144.190
E = 823869.966

SECTION 38
T 15 N
R 17 E
N = 372144.190
E = 823869.966

SECTION 39
T 15 N
R 17 E
N = 372144.190
E = 823869.966

SECTION 40
T 15 N
R 17 E
N = 372144.190
E = 823869.966

SECTION 15
T 15 N
R 17 E
N = 372144.190
E = 823869.966

SECTION 17
T 15 N
R 17 E
N = 372144.190
E = 823869.966

SECTION 25
T 15 N
R 17 E
N = 372144.190
E = 823869.966

SECTION 26
T 15 N
R 17 E
N = 372144.190
E = 823869.966

SECTION 36
T 15 N
R 17 E
N = 372144.190
E = 823869.966

SECTION 37
T 15 N
R 17 E
N = 372144.190
E = 823869.966

</

TRANSPORTATION PROJECT PLAT NO: 1420-22-21 -4.02

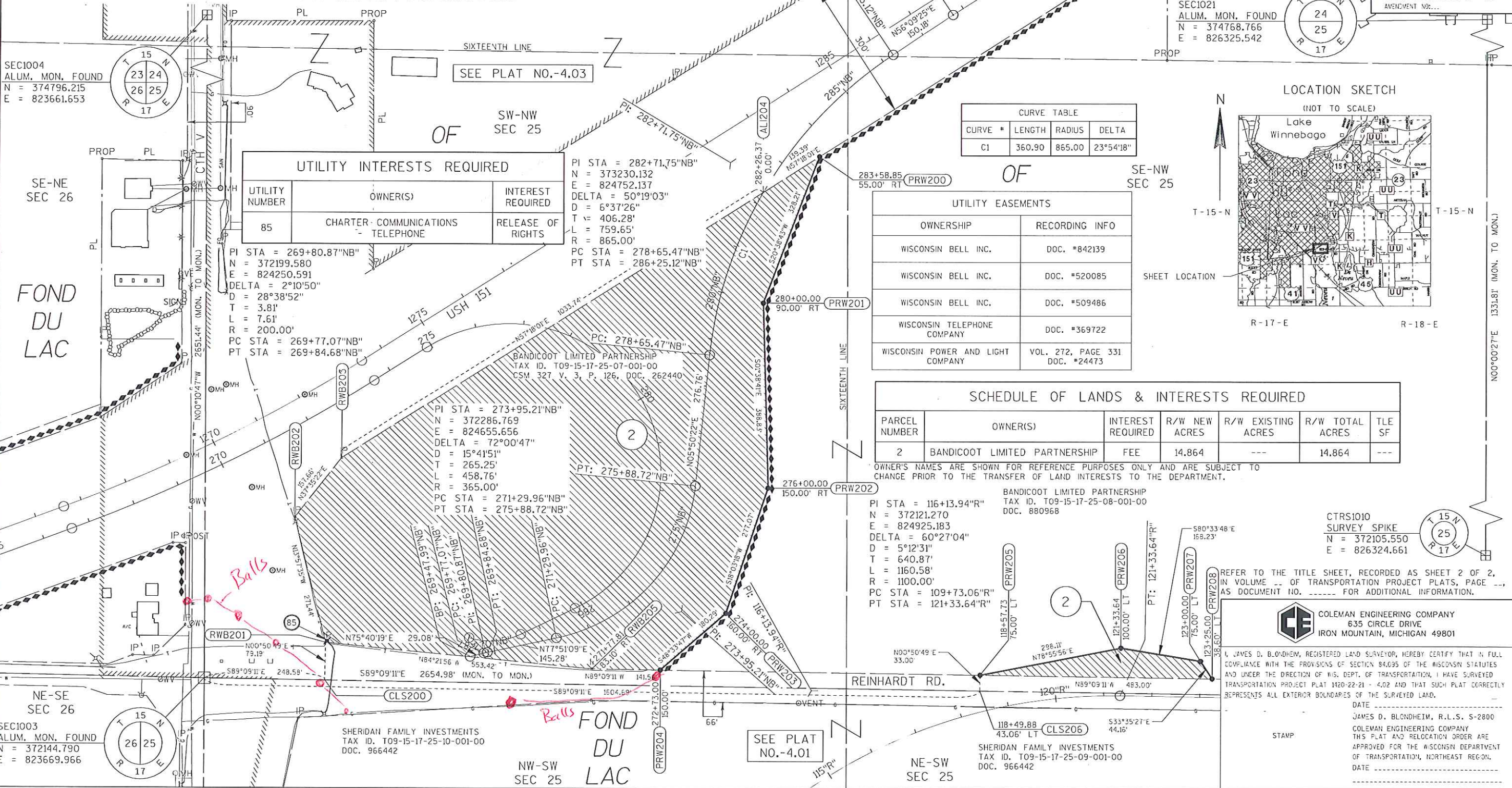
THAT PART OF THE CSM 327, V. 3, P. 126 DOC. 262440 ALSO THAT PART OF THE SW 1/4 - NW 1/4 AND THE SE 1/4 - NW 1/4 OF SECTION 25, TOWNSHIP 15 NORTH, RANGE 17 EAST, TOWN OF FOND DU LAC, FOND DU LAC COUNTY, WISCONSIN.

RELOCATION ORDER USH 151 FOND DU LAC COUNTY

TO PROPERLY ESTABLISH, LAY OUT, WIDEN, ENLARGE, EXTEND, CONSTRUCT, RECONSTRUCT, IMPROVE, OR MAINTAIN A PORTION OF THE HIGHWAY DESIGNATED ABOVE, THE STATE OF WISCONSIN DEPARTMENT OF TRANSPORTATION DEEMS IT NECESSARY TO RELOCATE OR CHANGE SAID HIGHWAY AND ACQUIRE CERTAIN LANDS AND INTERESTS OR RIGHTS IN LANDS FOR THE ABOVE PROJECT.

TO EFFECT THIS CHANGE, PURSUANT TO AUTHORITY GRANTED UNDER SUBSECTIONS 84.02 (3), 84.09, AND 84.30, WISCONSIN STATUTES, THE DEPARTMENT OF TRANSPORTATION HEREBY ORDERS:

1. THAT PORTION OF SAID HIGHWAY AS SHOWN ON THIS PLAT IS LAY OUT AND ESTABLISHED TO THE LINES AND WIDTHS AS SO SHOWN FOR THE ABOVE PROJECT.
2. THE LANDS OR INTERESTS OR RIGHTS IN LANDS AS SHOWN ON THIS PLAT ARE REQUIRED BY THE DEPARTMENT FOR THE ABOVE PROJECT AND SHALL BE ACQUIRED IN THE NAME OF THE STATE OF WISCONSIN, PURSUANT TO THE PROVISIONS OF SECTION 84.09 (1) OR (2), WISCONSIN STATUTES.



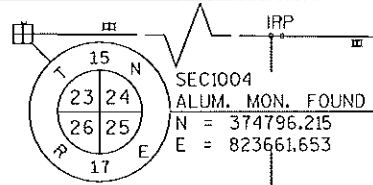
TRANSPORTATION PROJECT PLAT NO: 1420-22-21 - 4.03

THAT PART OF THE CSM 5097 V. 31 P. 40, CSM 6071 V. 46 P. 97, AND CSM 326 V. 3 P. 125 ALSO THAT PART OF THE NE 1/4 OF THE NW 1/4 AND THE NW 1/4 OF NW 1/4 AND THE SW 1/4 OF THE NW 1/4 OF SECTION 25, TOWNSHIP 15 NORTH, RANGE 17 EAST, TOWN OF FOND DU LAC, CITY OF FOND DU LAC, FOND DU LAC COUNTY, WISCONSIN

RELOCATION ORDER USH 151 FOND DU LAC COUNTY

TO PROPERLY ESTABLISH, LAY OUT, WIDEN, ENLARGE, EXTEND, CONSTRUCT, RECONSTRUCT, IMPROVE, OR MAINTAIN A PORTION OF THE HIGHWAY DESIGNATED ABOVE, THE STATE OF WISCONSIN DEPARTMENT OF TRANSPORTATION DEEMS IT NECESSARY TO RELOCATE OR CHANGE SAID HIGHWAY AND ACQUIRE CERTAIN LANDS AND INTERESTS OR RIGHTS IN LANDS FOR THE ABOVE PROJECT.

TO EFFECT THIS CHANGE, PURSUANT TO AUTHORITY GRANTED UNDER SUBSECTIONS 84.02 (3), 84.09, AND 84.30, WISCONSIN STATUTES, THE DEPARTMENT OF TRANSPORTATION HEREBY ORDERS THAT:
1. THAT PORTION OF SAID HIGHWAY AS SHOWN ON THIS PLAT IS LAY OUT AND ESTABLISHED TO THE LINES AND WIDTHS AS SO SHOWN FOR THE ABOVE PROJECT.
2. THE LANDS OR INTERESTS OR RIGHTS IN LANDS AS SHOWN ON THIS PLAT ARE REQUIRED BY THE DEPARTMENT FOR THE ABOVE PROJECT AND SHALL BE ACQUIRED IN THE NAME OF THE STATE OF WISCONSIN, PURSUANT TO THE PROVISIONS OF SECTION 84.09 (1) OR (2), WISCONSIN STATUTES.

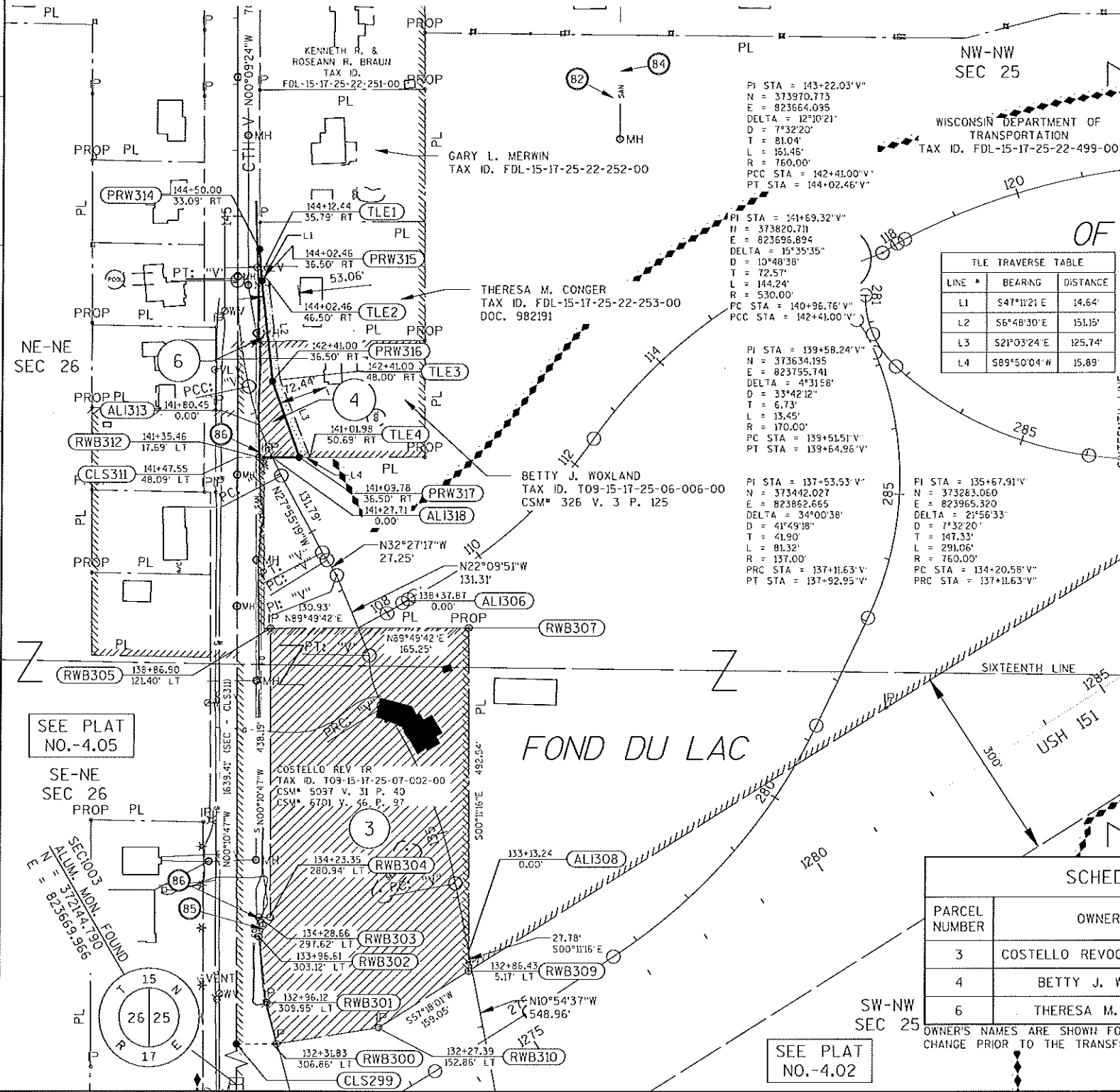


SEC1021 ALUM. MON. FOUND
N = 374768.766
E = 826325.542

SEE PLAT NO.-4.04

RESERVED FOR REGISTER OF DEEDS
PROJECT NUMBER 1420-22-21 - 4.03
AVENUE NO. 12

SCALE, FEET
0 100 200



LINE #	BEARING	DISTANCE
L1	S47°11'21"E	14.64'
L2	S6°48'30"E	15.15'
L3	S21°03'24"E	125.74'
L4	S89°50'04"W	15.89'

PARCEL #	OWNERSHIP	RECORDING INFO
3	WISCONSIN POWER AND LIGHT COMPANY	VOL. 272 PAGE 331 DOC. #24473
	PUBLIC UTILITY EASEMENT	CSM#5097, VOL. 31, PG. 40-40A-B, DOC. #597999
	PUBLIC UTILITY EASEMENT	CSM#6701, VOL. 46, PG. 97-97A, DOC. #825321
4	WISCONSIN POWER AND LIGHT COMPANY	VOL. 272, PAGE 331 DOC. #24473
6	WISCONSIN POWER AND LIGHT COMPANY	VOL. 272, PAGE 331 DOC. #24473

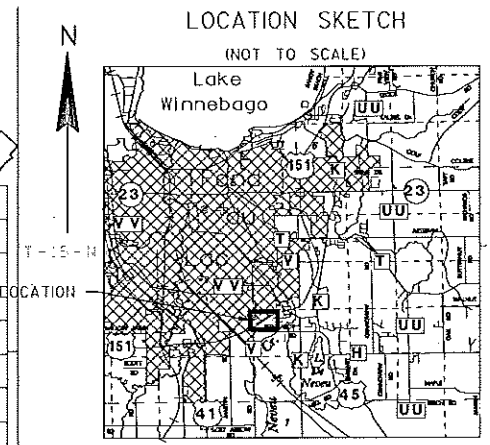
UTILITY NUMBER	OWNER(S)	INTEREST REQUIRED
82	CITY OF FOND DU LAC DEPARTMENT OF PUBLIC WORKS - STORM SEWER	RELEASE OF RIGHTS
83	CITY OF FOND DU LAC DEPARTMENT OF PUBLIC WORKS - WATER	RELEASE OF RIGHTS
84	FOND DU LAC SANITARY DISTRICT #4 - SEWER	RELEASE OF RIGHTS
85	CHARTER COMMUNICATIONS - TELEPHONE	RELEASE OF RIGHTS
86	CHARTER COMMUNICATIONS - FIBER OPTIC	RELEASE OF RIGHTS

PT - PT	BEARING	DISTANCE
CLS311 - RWB312	N89°49'13"E	33.00'
RWB312 - ALI313	N00°10'47"W	49.03'
ALI313 - PRW314	N00°10'47"W	266.12'
PRW314 - PRW315	S04°15'15"E	47.66'
PRW315 - PRW316	S06°14'34"E	153.42'
PRW316 - PRW317	S19°25'18"E	121.87'
PRW317 - ALI318	S89°50'04"W	40.39'
ALI318 - RWB312	S89°50'04"W	19.36'

PT - PT	BEARING	DISTANCE
SEC1003 - CLS299	N00°10'47"W	750.00'
CLS299 - RWB300	N89°49'13"E	80.00'
RWB300 - RWB301	N13°39'24"W	64.36'
RWB301 - RWB302	N07°01'19"W	100.72'
RWB302 - RWB303	N00°10'47"W	29.40'
RWB303 - RWB304	N89°49'13"E	17.00'
RWB310 - RWB300	S80°44'32"W	154.07'

PARCEL NUMBER	OWNER(S)	INTEREST REQUIRED	R/W NEW ACRES	R/W EXISTING ACRES	R/W TOTAL ACRES	PLE, TLE SF
3	COSTELLO REVOCABLE TRUST	FEE	4.07	-----	4.07	-----
4	BETTY J. WOXLAND	FEE	0.13	-----	0.13	2299.67
6	THERESA M. CONGER	FEE	0.02	-----	0.02	1006.67

OWNER'S NAMES ARE SHOWN FOR REFERENCE PURPOSES ONLY AND ARE SUBJECT TO CHANGE PRIOR TO THE TRANSFER OF LAND INTERESTS TO THE DEPARTMENT.



REFER TO THE TITLE SHEET, RECORDED AS SHEET 2 OF 2, IN VOLUME .. OF TRANSPORTATION PROJECT PLATS, PAGE ... AS DOCUMENT NO. FOR ADDITIONAL INFORMATION.

CE COLEMAN ENGINEERING COMPANY
635 CIRCLE DRIVE
IRON MOUNTAIN, MICHIGAN 49801

I, JAMES D. BLONDHEIM, REGISTERED LAND SURVEYOR, HEREBY CERTIFY THAT IN FULL COMPLIANCE WITH THE PROVISIONS OF SECTION 84.095 OF THE WISCONSIN STATUTES AND UNDER THE DIRECTION OF HIS. DEPT. OF TRANSPORTATION, I HAVE SURVEYED TRANSPORTATION PROJECT PLAT 1420-22-21 - 4.03 AND THAT SUCH PLAT CORRECTLY REPRESENTS ALL EXTERIOR BOUNDARIES OF THE SURVEYED LAND.

DATE
JAMES D. BLONDHEIM, R.L.S. S-2800
COLEMAN ENGINEERING COMPANY
THIS PLAT AND RELOCATION ORDER ARE APPROVED FOR THE WISCONSIN DEPARTMENT OF TRANSPORTATION, NORTHEAST REGION.
DATE

TRANSPORTATION PROJECT PLAT NO: 1420-22-21 -4.04

THAT PART OF THE CSM 5426 DOC. NO. 628124, ALSO THAT PART OF THE SW 1/4 OF THE SE 1/4 OF SECTION 24, ALSO THAT PART OF THE NW 1/4 OF THE NE 1/4 AND THE NE 1/4 OF THE NW 1/4 OF SECTION 25, TOWNSHIP 15 NORTH, RANGE 17 EAST, TOWN OF FOND DU LAC, FOND DU LAC COUNTY, WISCONSIN.

RELOCATION ORDER USH 151 FOND DU LAC COUNTY

TO PROPERLY ESTABLISH, LAY OUT, WIDEN, ENLARGE, EXTEND, CONSTRUCT, RECONSTRUCT, IMPROVE, OR MAINTAIN A PORTION OF THE HIGHWAY DESIGNATED ABOVE, THE STATE OF WISCONSIN DEPARTMENT OF TRANSPORTATION DEEMS IT NECESSARY TO RELOCATE OR CHANGE SAID HIGHWAY AND ACQUIRE CERTAIN LANDS AND INTERESTS OR RIGHTS IN LANDS FOR THE ABOVE PROJECT.

TO EFFECT THIS CHANGE, PURSUANT TO AUTHORITY GRANTED UNDER SUBSECTIONS 84.02 (3), 84.09, AND 84.30, WISCONSIN STATUTES, THE DEPARTMENT OF TRANSPORTATION HEREBY ORDERS THAT:
1. THAT PORTION OF SAID HIGHWAY AS SHOWN ON THIS PLAT IS LAY OUT AND ESTABLISHED TO THE LINES AND WIDTHS AS SO SHOWN FOR THE ABOVE PROJECT.
2. THE LANDS OR INTERESTS OR RIGHTS IN LANDS AS SHOWN ON THIS PLAT ARE REQUIRED BY THE DEPARTMENT FOR THE ABOVE PROJECT AND SHALL BE ACQUIRED IN THE NAME OF THE STATE OF WISCONSIN, PURSUANT TO THE PROVISIONS OF SECTION 84.09 (4) OR (2), WISCONSIN STATUTES.

TLE TRAVERSE TABLE		
PT - PT	BEARING	DISTANCE
TLE4 - TLE3	S75°32'55"E	23.21
TLE3 - TLE2	S21°24'41"E	65.19
TLE2 - TLE1	S17°12'24"W	13.68

0 100 200
SCALE, FEET

RESERVED FOR REGISTER OF DEEDS
PROJECT NUMBER 1420-22-21 - 4.04
AVENUE NO.

PI STA = 394+77.00"S"
N = 374825.003
E = 826914.202
DELTA = 35°19'11"
D = 7°38'22"
T = 238.78'
L = 462.33'
R = 750.00'
PC STA = 392+38.22"S"
PT STA = 397+00.56"S"

SEC103
CHISLED "C-"
N = 374706.115
E = 828996.585

SE-SW
SEC 24

TLE TRAVERSE TABLE		
PT - PT	BEARING	DISTANCE
TLE5 - TLE6	S59°34'05"W	5.00'
TLE6 - TLE7	N20°25'55"W	50.00'
TLE7 - TLE8	N69°34'05"E	5.00'

UTILITY INTERESTS REQUIRED

UTILITY NUMBER	OWNER(S)	INTEREST REQUIRED
80	WISCONSIN PUBLIC SERVICE - GAS	RELEASE OF RIGHTS
87	TOWN OF EMPIRE SANITARY DISTRICT #1 - SEWER	RELEASE OF RIGHTS

UTILITY EASEMENTS

PARCEL #	OWNERSHIP	RECORDING INFO
7	WISCONSIN POWER AND LIGHT COMPANY	VOL. 494 PAGE 81 DOC. #193938
	WISCONSIN POWER AND LIGHT COMPANY	VOL. 495, PAGE 311, DOC. #194591
	TOWN OF FOND DU LAC	VOL. 1268, P. 542-543, DOC. #545082
	AMERICAN TRANSMISSION COMPANY	DOC. #705430
8	WISCONSIN POWER AND LIGHT COMPANY, WISCONSIN BELL INC., SBC AMERITECH, WISCONSIN AND CHARTER CABLE PARTNERS, LLC, CHARTER COMMUNICATIONS	DOC. #769101
	WISCONSIN POWER AND LIGHT COMPANY, WISCONSIN TELEPHONE COMPANY	VOL. 388, PAGE 532, DOC. #134353
9	WISCONSIN POWER AND LIGHT COMPANY, WISCONSIN TELEPHONE COMPANY	VOL. 388, PAGE 532, DOC. #134353
11	WISCONSIN POWER AND LIGHT COMPANY, WISCONSIN TELEPHONE COMPANY	VOL. 388, PAGE 532, DOC. #134353
12	WISCONSIN POWER AND LIGHT COMPANY, WISCONSIN TELEPHONE COMPANY	VOL. 388, PAGE 532, DOC. #134353
13	WISCONSIN POWER AND LIGHT COMPANY, WISCONSIN TELEPHONE COMPANY	VOL. 388, PAGE 532, DOC. #134353
	LOT 32 & 33 OF THE PLAT OF TAXODAH HEIGHTS SUBDIVISION	VOL. 983, PAGE 48-50, DOC. #458650

SEE PLAT NO. -4.03

SEC1021
ALUM. MON. FOUND
N = 374768.766
E = 826325.542

FOND DU LAC
WISCONSIN DEPARTMENT OF TRANSPORTATION
TAX ID. T09-15-17-25-05-001-00
CSM 5426 DOC. NO. 628124

RIGHT-OF-WAY COURSE TABLE

PT - PT	BEARING	DISTANCE
PRW403 - PRW404	N48°35'29"E	36.69'
PRW404 - RWB405	N06°04'04"E	46.23'
RWB405 - RWB406	N20°25'55"W	247.47'
RWB406 - RWB407	N26°02'55"W	86.90'
RWB407 - ALI408	N64°11'24"E	33.44'
ALI408 - PRW409	N64°11'24"E	32.56'
PRW409 - PRW410	S32°54'06"E	100.77'
PRW410 - PRW411	S14°50'43"E	49.71'
PRW412 - PRW413	S46°57'33"E	100.00'
PRW413 - RWB414	S52°18'52"E	90.01'
RWB414 - RWB415	S71°11'33"E	164.25'
RWB415 - ALI416	N88°39'23"W	173.86'
ALI416 - RWB417	N88°39'23"W	213.16'
RWB417 - PRW403	N88°39'23"W	24.77'

CURVE TABLE

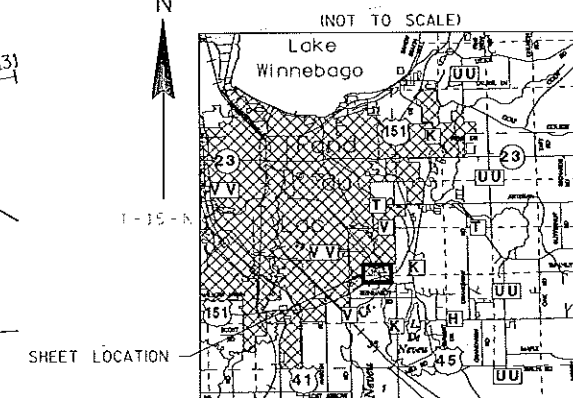
CURVE	CHORD BEARING	CHORD DISTANCE	RADIUS	ARC LENGTH	PI NORTHING	PI EASTING
C1	S35°06'23"E	134.13'	818.51'	134.28	374975.477	826886.902
C2	N40°26'19"W	378.83'	750.00'	382.97	374863.729	826895.473

SCHEDULE OF LANDS & INTERESTS REQUIRED

PARCEL NUMBER	OWNER(S)	INTEREST REQUIRED	R/W NEW ACRES	R/W EXISTING ACRES	R/W TOTAL SF	PLE, TLE SF
7	JEFF AND JESSICA BURMEISTER	FEE, ACCESS RIGHTS & TLE	0.007	----	309.84	250.00
8	JAMES A. AND JALAIN M. KARL	FEE	0.003	----	117.69	----
9	RICHARD N. AND CAROL A. MIELKE	FEE	0.003	----	130.43	----
11	ROBERT J. EVANS	FEE	0.012	----	542.47	----
12	HAROLD C. MANSKE	FEE & TLE	0.008	----	360.85	639.25
13	JEREMY L. MUELLENBACH AND KIMBERLY D. SEARL	TLE	----	----	----	508.36

OWNER'S NAMES ARE SHOWN FOR REFERENCE PURPOSES ONLY AND ARE SUBJECT TO CHANGE PRIOR TO THE TRANSFER OF LAND INTERESTS TO THE DEPARTMENT.

LOCATION SKETCH



REFER TO THE TITLE SHEET, RECORDED AS SHEET 2 OF 2, IN VOLUME ... OF TRANSPORTATION PROJECT PLATS, PAGE ... AS DOCUMENT NO. ... FOR ADDITIONAL INFORMATION.

CE COLEMAN ENGINEERING COMPANY
635 CIRCLE DRIVE
IRON MOUNTAIN, MICHIGAN 49801

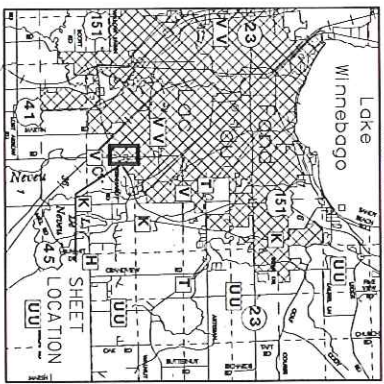
I, JAMES D. BLONDEHEIM, REGISTERED LAND SURVEYOR, HEREBY CERTIFY THAT IN FULL COMPLIANCE WITH THE PROVISIONS OF SECTION 84.09 OF THE WISCONSIN STATUTES AND UNDER THE DIRECTION OF U.S. DEPT. OF TRANSPORTATION, I HAVE SURVEYED TRANSPORTATION PROJECT PLAT 1420-22-21 - 4.04 AND THAT SUCH PLAT CORRECTLY REPRESENTS ALL EXTERIOR BOUNDARIES OF THE SURVEYED LAND.

DATE _____
JAMES D. BLONDEHEIM, R.L.S. S-2800
COLEMAN ENGINEERING COMPANY
THIS PLAT AND RELOCATION ORDER ARE APPROVED FOR THE WISCONSIN DEPARTMENT OF TRANSPORTATION, NORTHEAST REGION.
DATE _____

0 100 200
SCALE, FEET

1

LOCATION SKETCH
(NOT TO SCALE)



TLE TRAVERSE TABLE		
Line "	BEARING	DISTANCE
L21	S89°49'13"W	15.00'
L22	N0°10'47"W	30.00'
L23	N89°49'13"E	15.00'

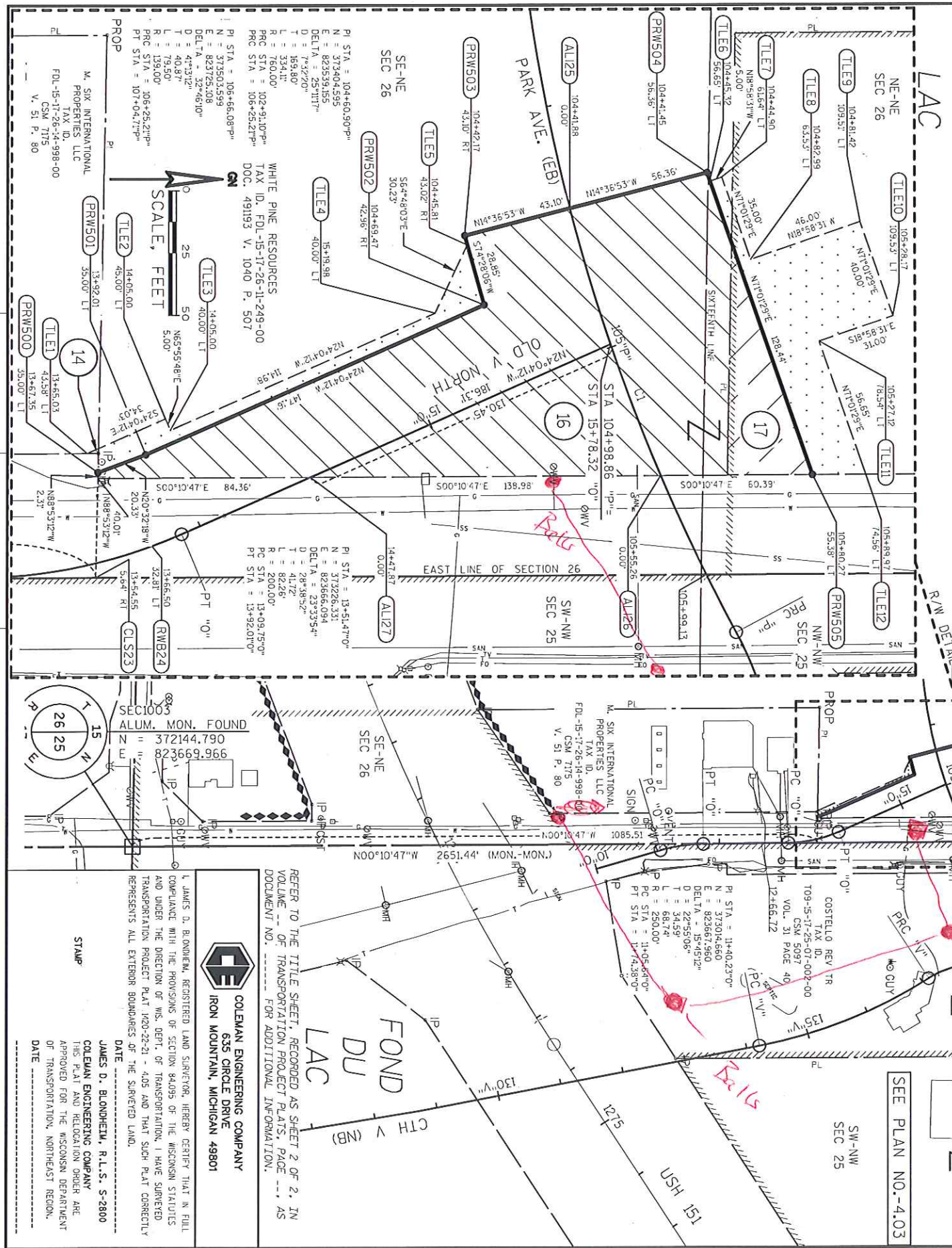
CARMEN L. JEGGUM
TAX ID. FDL-15-17-26-11-005-00

CURVE TABLE					
CURVE	CHORD BEARING	CHORD DISTANCE	RADIUS	ARC LENGTH	
C1	N 7° 30' 58"E	113.27'	760.00'	113.27'	
					PI NORTHING
					PI EASTING

SCHEDULE OF LANDS & INTERESTS REQUIRED						
PARCEL NUMBER	OWNERS	INTEREST REQUIRED	R/W NEW ACRES	R/W EXISTING ACRES	R/W TOTAL SF	PLE, TILE SF
14	M. SIX INTERNATIONAL PROPERTIES, LLC	TILE	----	----	----	----
16	WHITE PINE RESOURCES	FEE & TILE	0.372	----	36205.67	1268.74
17	WILLIAM E. & JUDITH LEE	FEE & TILE	0.036	----	15717.37	3632.67
18	JAMES S. MALY	TILE	----	----	----	626.07
19	ARRON C. KLASZY AND CARMEN L. JEROLINI	TILE	----	----	----	668.68

WILLIAM E. & JUDITH D. LE
TAX ID. T09-15-17-26-01-00

DOC. 296650 V. 719 P. 30
DOC. 312496 V. 742 P. 71



COLEMAN ENGINEERING COMPANY
635 CIRCLE DRIVE
IRON MOUNTAIN, MICHIGAN 49801

I, JAMES D. BLONDIEM, REGISTERED LAND SURVEYOR, HEREBY CERTIFY THAT IN FULL COMPLIANCE WITH THE PROVISIONS OF SECTION 84.095 OF THE WISCONSIN STATUTES AND UNDER THE DIRECTION OF WIS. DEPT. OF TRANSPORTATION, I HAVE SURVEYED TRANSPORTATION PROJECT PLAT 102-22-21 - 40S AND THAT SUCH PLAT CORRECTLY REPRESENTS ALL EXTENSION BOUNDARIES OF THE SURVEYED LAND.

COLEMAN ENGINEERING COMPANY
THIS PLAN AND RELOCATION ORDER ARE
APPROVED FOR THE WISCONSIN DEPARTMENT
OF TRANSPORTATION, NORTHEAST REGION.
DATE -----