

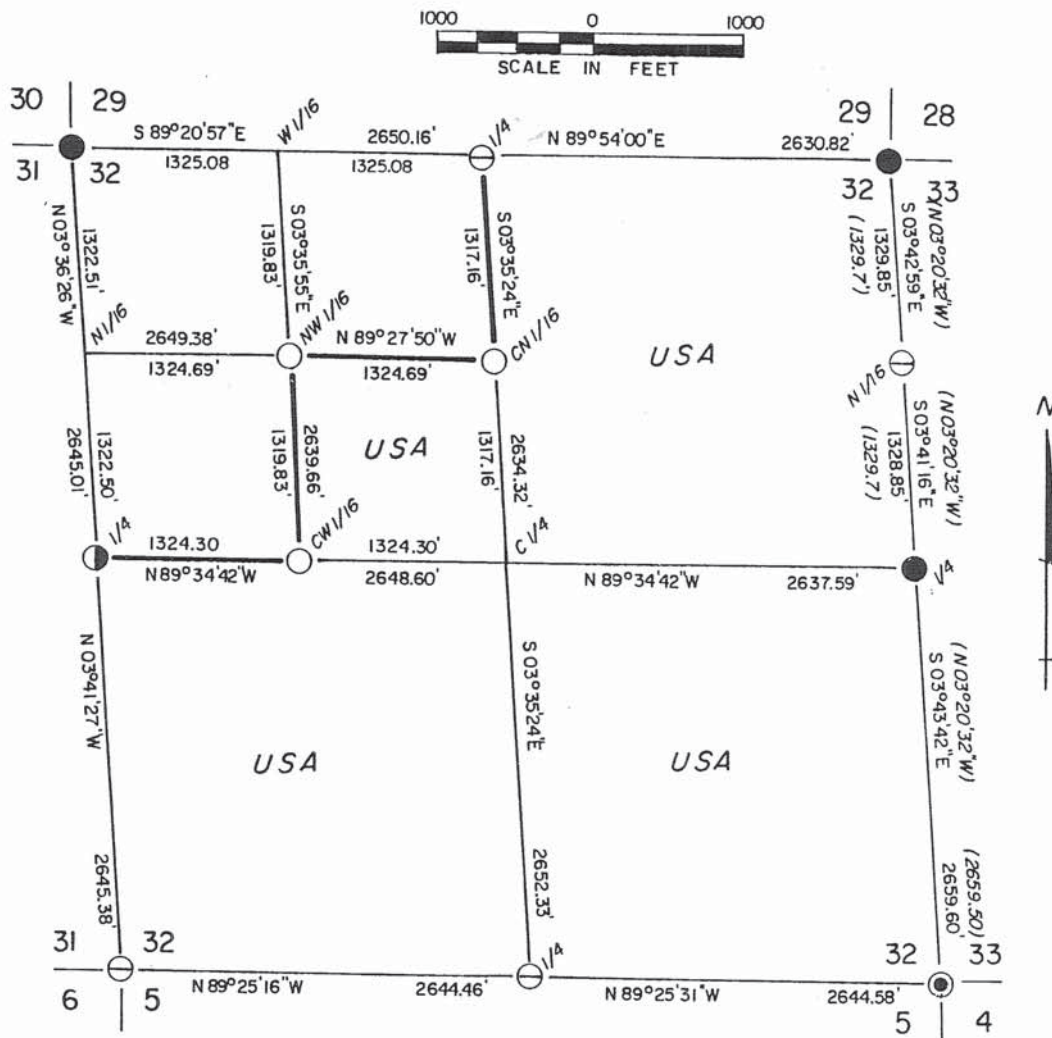
Stock No. 26273

OFFICE OF -
OCONTO COUNTY SURVEYOR
MAP # 64

Sheet one of four

PLAT OF SURVEY U.S. GOVERNMENT LAND

Being the SE 1/4 - NW 1/4, NE 1/4, SE 1/4 and the SW 1/4 of Section 32
Township 32 North, Range 16 East, Fourth Principal Meridian
Oconto County, Wisconsin



LEGEND

- = FOUND 4" DIAMETER ALUMINUM OCONTO COUNTY MONUMENT
- ⊙ = FOUND 2" DIAMETER ALUMINUM MONUMENT WITH CAP STAMPED FOR CORNER
- ⊙ = FOUND 2" DIAMETER IRON PIPE WITH BRASS CAP STAMPED FOR CORNER
- = SET 2" DIAMETER ALUMINUM MONUMENT 36" LONG WITH CAP STAMPED FOR CORNER
- = SET 1" DIAMETER ALUMINUM MONUMENT 36" LONG WITH CAP STAMPED FOR CORNER
- = MARKED BOUNDARY LINES OF U.S. GOVERNMENT LANDS
- () = RECORDED DIMENSIONS ON PREVIOUS PLATS OF SURVEY, USFS

Stock No. 26273

OFFICE OF -
OCONTO COUNTY SURVEYOR
MAP #

Sheet two of four

SURVEY NOTES

This survey was made by AARON ASSOCIATES of Oconto Falls, Wisconsin, under contract with the U.S. Department of Agriculture, Forest Service, for the purpose of restoring and establishing corners on the perimeter of Section 32, for establishing subdivisional corners within Section 32, and for locating and marking the boundaries of U.S. Government lands on their perimeter and within Section 32, Township 32 North, Range 16 East, Fourth Principal Meridian, Oconto County, Wisconsin.

The U.S. Government lands in this Section were acquired in 1933-1935.

The original Government subdivision survey of this Township was made in 1857.

The corner positions recovered, restored, and established by this survey are marked by monuments described in the map legend.

The corner positions established were located to an accuracy of one part in 5000.

The bearings between corner positions are true bearings, as determined by solar observations.

The field notes of this survey and a copy of this plat are on file in the Forest Supervisor's Office at Rhinelander, Wisconsin.

CORNERS RECOVERED AND RESTORED

- 1) Corner to Sections 5-6-31-32, T31-32N, R16E.

Corner was found, monumented by Milo Stefan, RLS. Certificate on file in Oconto County Courthouse.

- 2) Corner to Sections 29-30-31-32, T32N, R16E.

Corner was found, monumented by Paul Smith, RLS. Certificate on file in Oconto County Courthouse.

- 3) Corner to Sections 28-29-32-33, T32N, R16E.

Corner was found, monumented by David Mau, RLS. Certificate on file in Oconto County Courthouse.

- 4) Corner to Sections 4-5-32-33, T31-32N, R16E.

Corner was found, monumented by Robert Bandow, RLS. Certificate on file in Oconto County Courthouse.

- 5) Quarter Corner to Sections 5-32, T31-32N, R16E.

Corner was found, monumented by John Schulke, RLS. Certificate on file in Oconto County Courthouse.

Stock No. 26273

OFFICE OF
OCONTO COUNTY SURVEYOR
MAP #

Sheet three of four

6) Quarter Corner to Sections 31-32, T32N, R16E.

This corner position was found monumented with a 1 1/4" iron pipe in a fence line intersection which fell close to single proportionate location and was used by area surveys for many years. I accepted the iron pipe as the corner perpetuation and monumented same. Corner references:

Maple	8"	N37°E	33.70'
White Pine	18"	S31°E	14.70'
Hemlock	11"	S34°W	53.00'
Dbl. Hemlock	10"	N32°W	54.85'
Steel Sign Post		West	1.8'

7) Quarter Corner to Sections 29-32, T32N, R16E.

Corner was found, monumented by Kim H Pritzlaff, RLS. Certificate on file in Oconto County Courthouse.

8) Quarter Corner to Sections 32-33, T32N, R16E.

Corner was found, monumented by David Mau, RLS. Certificate on file in Oconto County Courthouse.

9) North Sixteenth Corner to Sections 32-33, T32N, R16E.

Corner was found, monumented by Kim H Pritzlaff, RLS. Plat of survey of Section 33 on file in the Oconto County Courthouse.

CORNERS ESTABLISHED1) Center West Sixteenth Corner to Section 32, T32N, R16E.

Set this corner at midpoint and on line between the center quarter and west quarter corners of Section 32. Corner references:

Hemlock	5"	N69°E	17.81'
White Pine	9"	North	31.09'
Steel Sign Post		West	0.7'

2) Northwest Sixteenth Corner to Section 33, T32N, R16E.

Set this corner position at the straight line intersection point of sixteen lines in the northwest quarter of Section 32. Corner references:

Jack Pine	11"	S51°E	61.51'
White Pine	5"	S13°W	8.38'
Steel Sign Post		South	0.7'

3) Center North Sixteenth Corner to Section 32, T32N, R16E.

Set this corner position at midpoint and on line between the center quarter and north quarter corners of Section 32. Corner references:

Maple	9"	N54°W	6.60'
Maple	6"	N64°E	8.41'
Steel Sign Post		West	0.7'

64-3

Stock No. 26273

OFFICE OF
OCONTO COUNTY SURVEYOR
MAP #

Sheet four of four

SURVEYOR'S AFFIDAVITSTATE OF WISCONSIN)^{ss}
OCONTO COUNTY)

I, Kim H Pritzlaff, Registered Land Surveyor in the State of Wisconsin, hereby certify: That I have surveyed and subdivided Section 32, Township 32 North, Range 16 East, Fourth Principal Meridian, Oconto County, State of Wisconsin;

That the field notes and Plat Map herewith are a correct representation of the land surveyed and subdivided; and that I have surveyed and subdivided said Section in accordance with the rules for survey of the Public Lands and with the Statutes of the State of Wisconsin.

Date of Survey: 1992



Kim H Pritzlaff

Kim H Pritzlaff, RLS No. 1259
AARON ASSOCIATES
Oconto Falls, Wisconsin

Plat ready for filing:

Barry J. Hatcher

District Ranger

68-4