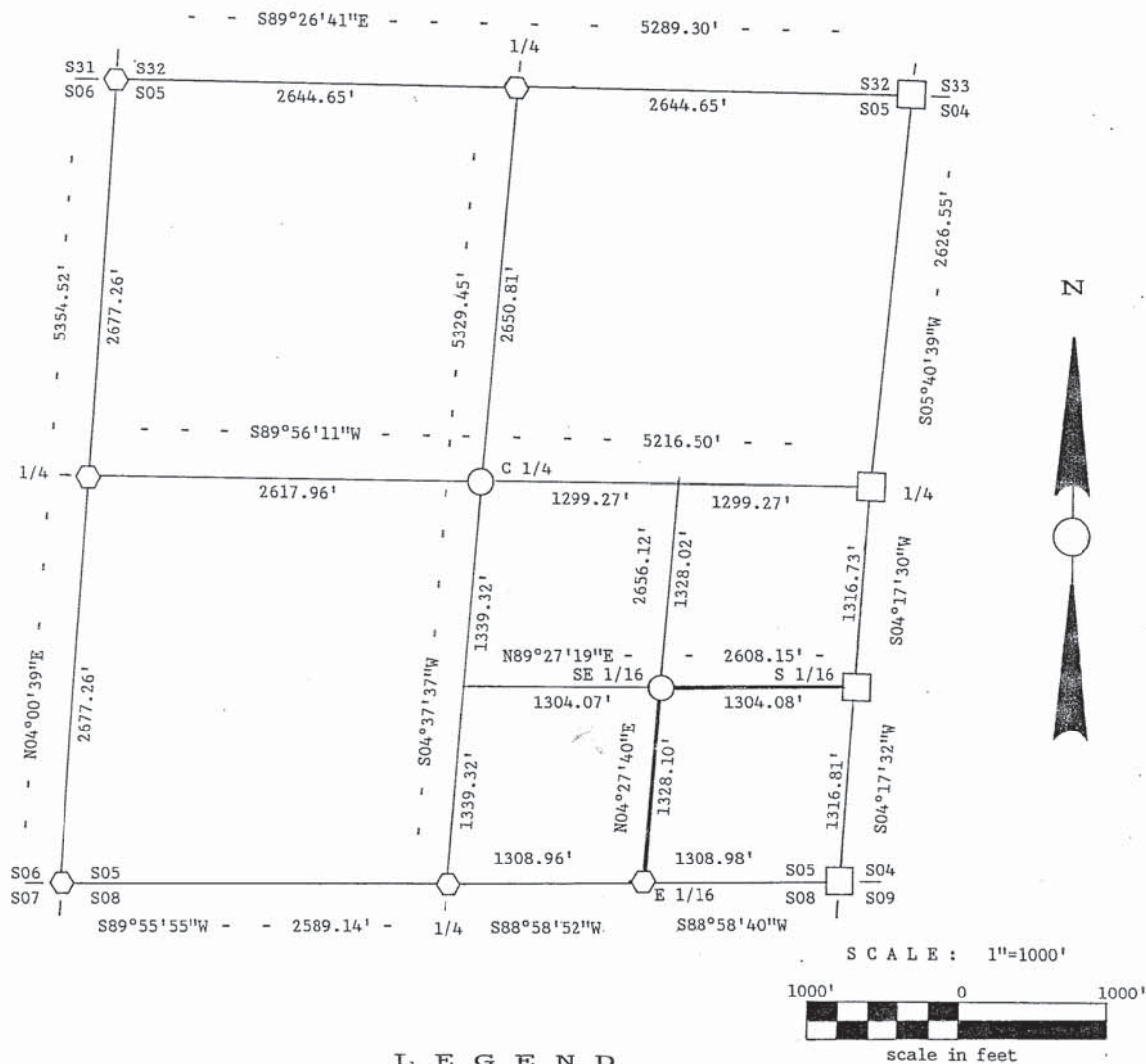


Stock No. 26273

OFFICE OF
OCONTO COUNTY SURVEYOR
85

PLAT OF SURVEY FOR CERTIFIED LAND CORNER
RESTORATION AND ESTABLISHMENT
OF U.S. GOVERNMENT LAND

BEING THE CORNERS FOR THE NW 1/4, NE 1/4, SW 1/4,
W 1/2 OF THE SE 1/4 AND THE NE 1/4 OF THE SE 1/4.
SECTION 5, T31N, R16E, FOURTH PRINCIPAL MERIDIAN
OCONTO COUNTY, STATE OF WISCONSIN



LEGEND

- Boundary line marked to standard.
 - 2" diameter iron pipe with brass tablet stamped to identify the corner.
 - 1" diameter aluminum pipe monument, 36 inches long with an aluminum cap stamped to identify the corner.
 - ⬡ 2 1/2" diameter aluminum pipe monument, 30 to 36 inches long with an aluminum cap stamped to identify the corner.
- NOTE: Bearings are referenced to solar observation.

OFFICE OF
OCONTO COUNTY
SURVEYOR

Stock No. 26273

Sheet 2 of 3

SURVEY NOTES

This survey was made by John C. Schulke, a Registered Land Surveyor in the State of Wisconsin, for the U.S. Department of Agriculture, Forest Service. The purpose of the survey was for recovery, establishing, marking and perpetuating the corners and boundary lines of the U.S. Government Land on the perimeter and within Section 5, Township 31 North, Range 16 East, Fourth Principal Meridian, Oconto County, Wisconsin.

The original Government survey of the North and West township lines was done by Artemas Curtis, and the East township line was one by Thomas Sprague in 1839. The township subdivision was one by James McBride in 1857.

The bearings between corner positions are true bearings as determined by reference to solar observations. The accuracy of this survey exceeds the State requirement for closure of 1 in 3,000. Corners recovered or established by this survey are marked as described in the map legend. Each monumented corner is referenced to blazed, scribed, painted and tagged bearing trees. Tie bearings are magnetic, and not corrected for declination.

CORNERS RECOVERED AND RESTORED

1. Section Corner Common to Sections 5, 6, 31 and 32.
Corner monument recovered in place and as described on U.S. Public Land Survey Monument record form in the Oconto County records, Document number 349198, in 1985 by Milo Stephan (S-1558).
2. Quarter Corner Between Sections 5 and 32.
Corner position restored by single proportionate measurement between the Northeast and the Northwest Section corners of Section 5. Center of the highway 64 is South 49.0 feet from the monument.

| | | | |
|--------------------|-----|-----------|-------------|
| Corner References: | | | |
| Beech | 12" | S08°E | 116.81 feet |
| Twin Sugar Maple | 6" | N63°W | 55.9 feet |
| Basswood | 7" | N03°E | 30.65 feet |
| Sugar Maple | 10" | N56°E | 81.36 feet |
| Steel sign post | | Northwest | 1.0 feet |
3. Section Corner Common to Sections 4, 5, 32 and 33.
Corner monument recovered in place and as described on Certified Land Corner Restoration form in the Oconto County records, Document #359489, in 1986 by Robert E. Bandow (S-104).
4. Quarter Corner Between Sections 4 and 5.
Corner monument recovered in place and was set in 1960 by S-185.
5. South Sixteenth Corner Between Sections 4 and 5.
Corner monument recovered in place.
6. Section Corner Common to Sections 4, 5, 8 and 9.
Corner monument recovered in place and described on Plat Survey notes in the Oconto County records, Document #349678, in 1984 by William Lenca (S-1569).
7. East Sixteenth Corner Between Sections 5 and 8.
Corner monument recovered in place and described on Plat Survey notes in the Oconto County records, Document #349678, in 1984 by William Lenca (S-1569).

85-2

Stock No. 26273

Sheet 3 of 3

8. Quarter Corner Between Sections 5 and 8.
Corner monument recovered in place and described on Plat Survey notes in the Oconto County records, Plat Document #349678, in 1984 by William Lenca (S-1569).
9. Section Corner Common to Sections 5, 6, 7 and 8.
Corner monument recovered in place and described on U.S. Public Land Survey Monument Record form in the Oconto County records, Document #349201, in 1985 by Milo Stefan (S-1558).
0. Quarter Corner Between Sections 5 and 6.
Corner monument set in 1985 and described on U.S. Public Land Survey Monument Record form in the Oconto County records, Document #349199, by Milo Stefan (S-1558).

CORNERS ESTABLISHED

1. Southeast Sixteenth Corner of Section 5.
Corner position is at the intersection of the straight lines between opposing sixteenth corners on the perimeter of the Southeast Quarter of Section 5.

Corner references:

| | | | |
|-----------------|-----|-------|------------|
| Sugar Maple | 10" | N21°E | 43.98 feet |
| Red Oak | 16" | S73°W | 13.82 feet |
| Sugar Maple | 5" | S29°E | 31.98 feet |
| Steel sign post | | West | 0.8 feet |
2. Center Quarter Corner of Section 5.
Corner position established at the intersection of the straight lines between opposing Quarter corners on the perimeter of Section 5.

Corner references:

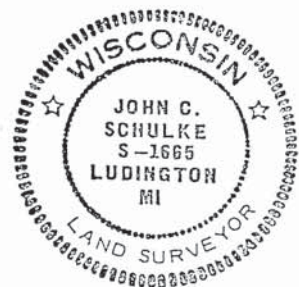
| | | | |
|-----------------|-----|-------|------------|
| White Pine | 14" | S63°W | 13.90 feet |
| White Pine | 10" | S61°E | 9.41 feet |
| White Pine | 12" | N42°E | 8.15 feet |
| Steel sign post | | West | 0.8 feet |

SURVEYOR'S AFFIDAVIT

State of Wisconsin)
County of Oconto)ss

I, John C. Schulke, a Cadastral surveyor, and Registered Land Surveyor in the State of Wisconsin, hereby certify that I have surveyed and subdivided Section 5, Township 31 North, Range 16 East, Fourth Principal Meridian, State of Wisconsin.

The plat map and survey notes herewith are a correct representation of the land surveyed and subdivided. I have surveyed and subdivided said section in accordance with the rules for the survey of the public lands and with the statutes of the State of Wisconsin.



John C. Schulke
4604 South U.S.-31
Ludington, MI 49431
R.L.S. State of Wisconsin
Date of Survey 1986
Certificate S-1665

85-3
John C. Schulke
January 13th, 1987
Plat ready for filing
District Ranger