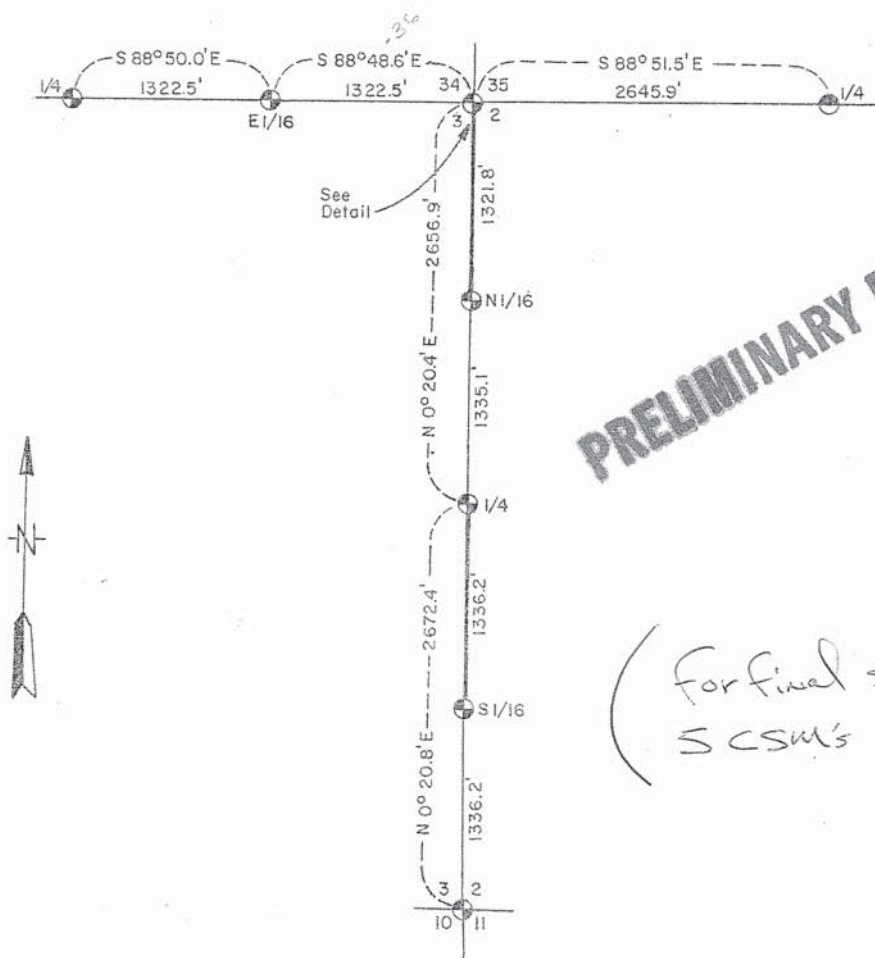


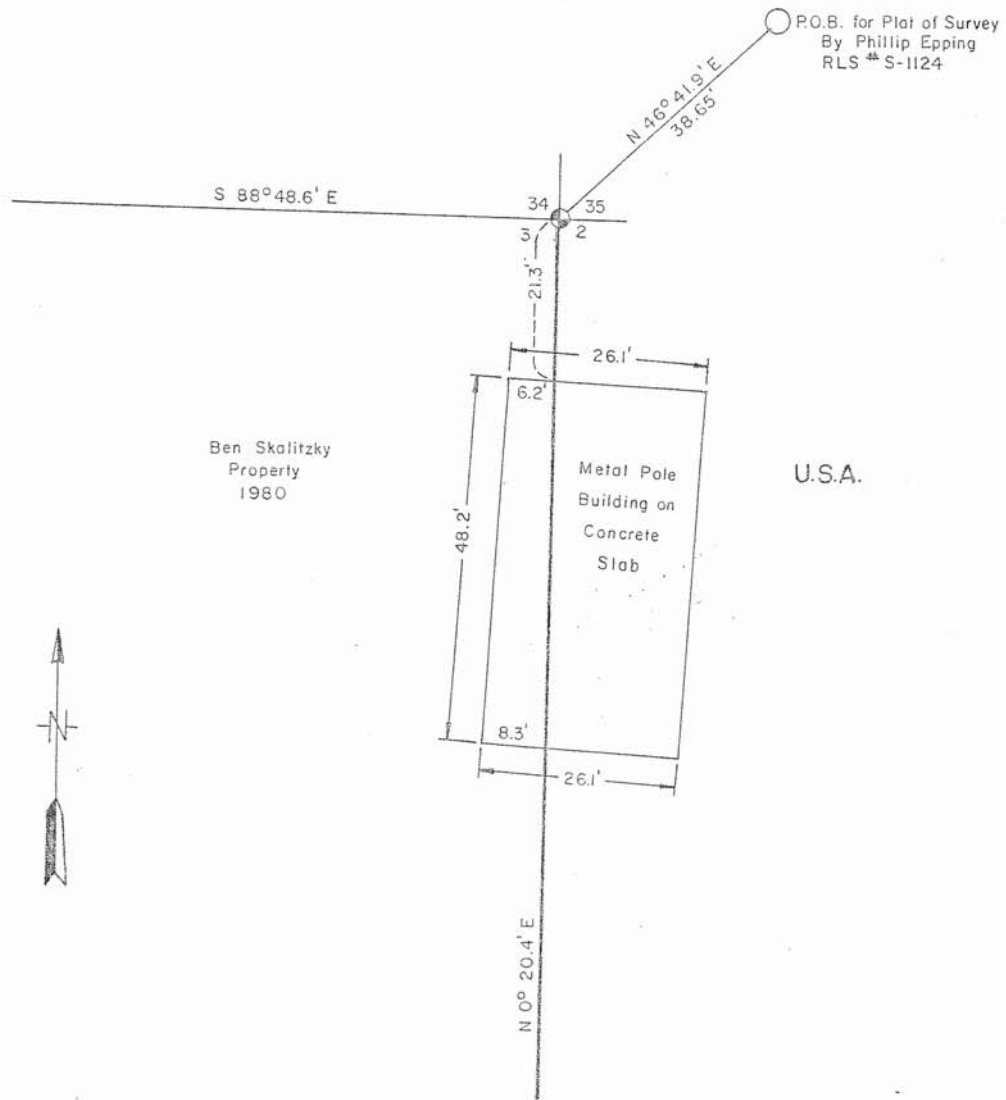
*Preliminary set 1/10/87 mcd*  
**CERTIFIED LAND CORNER RESTORATION & ESTABLISHMENT**

Being Section Corners to Sections 2-3-34-35 & 2-3-10-11; and Quarter  
Corners to Sections 3-34, 2-35 & 2-3; Sixteenth Corners to Sections 2-3  
N1/16 & S1/16, to Sections 3-34, E1/16;  
and Boundary Line Between Sections 2-3  
Township 31-32 North, Range 15 East, Fourth Principal Meridian  
OCONTO COUNTY, WISCONSIN



LEGEND

- ⊕ 2" Diameter Aluminum Monument, 30" Long, with an Aluminum Cap.
- ⊙ 2" Inside Diameter, Galvanized Iron Pipe, 5 Ft. Long, Filled with Concrete, with a Brass Cap.
- Marked Boundary Line of U.S. Government Land.



11-2

Stock No. 26273

Sheet 3 of 5

SURVEY NOTES

This survey of the township line between the  $\frac{1}{4}$  corners to Sections 3-34 and Sections 2-35 and the section line between the section corners to Sections 2-3-34-35 and Sections 2-3-10-11, Township 31-32 North, Range 15 East, Fourth Principal Meridian, was made by the U.S. Department of Agriculture, Forest Service.

The U.S. Government holds title to lands adjoining said section line in Section 2, NW $\frac{1}{4}$  NW $\frac{1}{4}$  and the NW $\frac{1}{4}$  SW $\frac{1}{4}$ , acquired from 1934 to 1946.

The purpose of this survey is to restore the original section and quarter corners of the 1857 survey, establish the north and south  $\frac{1}{16}$  corners between sections 2-3 and identify the building location near the section corner to Sections 2-3-34-35, Townships 31-32 North, Range 15 East.

The corner positions recovered, restored and established by this survey are marked by the monument described in the map legend.

The corner positions established were located to an accuracy of one part in 3000.

The bearings between corner positions are true bearings as determined by solar observations.

The field notes of this survey and a copy of this plat are on file in the Forest Supervisor's Office at Rhinelander, Wisconsin.

CORNERS RECOVERED AND RESTORED1. Section Corner to Sections 2-3-34-35, T.31-32N., R.15E.

Corner position found marked by an oak post point from which remains of two very large (36"-40") white pine stumps bear; 1.) N.64 $^{\circ}$ E. 105 lks; 2.) S.58 $^{\circ}$ E, 129 $\frac{1}{2}$  lks. as called for in Nathan Smith's restoration survey of 1921.

Corner references:

Red Pine 12"	N.42 $^{\circ}$ E.	42.20 feet
Red Pine 14"	S.56 $^{\circ}$ E.	34.82 feet
Red Pine 12"	S.68 $^{\circ}$ W.	10.41 feet
Steel sign post	South	1.4 feet

2" X 3' Galv. iron pipe placed by Resvick (S-802) in error and remarked P.O.B. bears N.46 $^{\circ}$ E., 38.65' from corner. (Doc. Number 312099.)

2. Section Corner to Sections 2-3-10-11, T.31N., R.15E.

Corner position found marked by a squared wood post in mound of dirt (as called for in Nathan Smith survey of 1921). with remains of 3 original pine bearing trees, the southeast one scribed.

Corner references:

Red Pine 12"	N.38 $^{\circ}$ E.	8.86 feet
Red Pine 8"	S.43 $^{\circ}$ E.	22.50 feet
Red Pine 10"	South	14.04 feet
Red Pine 10"	S.82 $^{\circ}$ W.	21.20 feet
Steel sign post	Southeast	0.6 feet

11  
w

Stock No. 26273

Sheet 4 of 5

3. Quarter Corner to Sections 2-35, T.31-32N., R.15E.  
 Corner position found marked by a Forest Service monument placed in 1969 by S-802 and certificate filed in Oconto County Courthouse as Document Number 259669.

4. Quarter Corner to Sections 3-34, T.31-32N., R.15E.  
 Corner position restored at intersection of fence westerly and center line of County Highway "T". This position is confirmed by Nathan Smith's survey of 1921.  
 Corner references:

White Birch 7"	S.89°E.	73.42 71.42 feet
Red Oak 18"	S.40°E.	128.81 feet

5. Quarter Corner to Sections 2-3, T.31N., R.15E.  
 Corner position found marked by a decayed wooden post in mound of dirt (as described in Nathan Smith's survey of 1921).  
 Corner references:

Red Pine 12"	N.48°E.	15.15 feet
Red Pine 9"	N.74°W.	62.54 feet
Red Pine 10"	N. 4°W.	48.03 feet
Steel sign post	Northeast	1.0 feet

6. East Sixteenth Corner to Sections 3-34, T.31-32N., R.15E.  
 Corner position found marked by a post hole in mound of earth with bearing tree stump as called for in Nathan Smith's survey of 1921.

Corner references:

White Birch 12"	S.44°E.	41.94 feet
Red Maple 14"	S.42°W.	16.07 feet
Red Oak 14"	N.82°W.	105.32 feet
Steel sign post	South	2.0 feet

CORNERS ESTABLISHED

1. North Sixteenth Corner to Sections 2-3.  
 Corner position established on line and at record proportionate measurement between the west quarter corner and the northwest section corner to Section 2.  
 Corner references:

Red Pine 8"	N.59°E.	15.68 feet
Red Pine 8"	S.13°E.	32.79 feet
Red Pine 6"	S.79°W.	44.89 feet
Steel sign post	South	.4 feet

2. South Sixteenth Corner to Sections 2-3.  
 Corner position established on line and midpoint between the west quarter corner and the southwest section corner to Section 2.  
 Corner references:

Red Pine 6"	N.62°E.	19.76 feet
Red Pine 8"	S.78°E.	39.05 feet
Red Pine 10"	S.38°E.	34.92 feet
Steel sign post	North	1.0 feet

11-4



Stock No. 26273

Sheet 5 of 5

SURVEYOR'S AFFIDAVITState of Wisconsin ] SS  
County of Forest ]

I, Milo E. Stefan, Cadastral Surveyor, U.S. Forest Service and a registered land surveyor in the State of Wisconsin, hereby certify that I have surveyed, restored, and established the aforesaid corners in Township 31-32 North, Range 15 East, Fourth Principal Meridian, State of Wisconsin.

The plat map and the notes herewith are a correct representation of the land surveyed. I have surveyed in accordance with the rules for survey of the public lands and with the statutes of the State of Wisconsin.



Date of Survey: 1980

Milo E. Stefan  
Cadastral Surveyor, U.S. Forest Service  
R.L.S. State of Wisconsin  
Certificate S-1558.

11-5