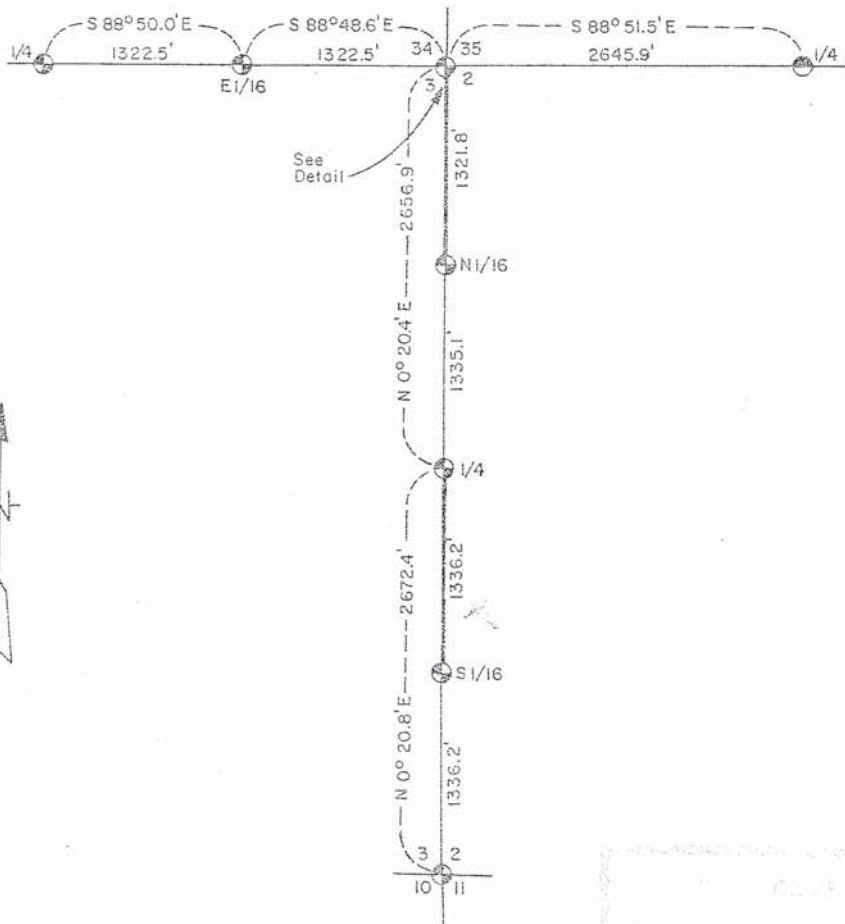


CERTIFIED LAND CORNER RESTORATION & ESTABLISHMENT

Being Section Corners to Sections 2-3-34-35 & 2-3-10-11; and Quarter
Corners to Sections 3-34, 2-35 & 2-3; Sixteenth Corners to Sections 2-3
N1/16 & S1/16, to Sections 3-34, E1/16;
and Boundary Line Between Sections 2-3
Township 31-32 North, Range 15 East, Fourth Principal Meridian
OCONTO COUNTY, WISCONSIN



LEGEND

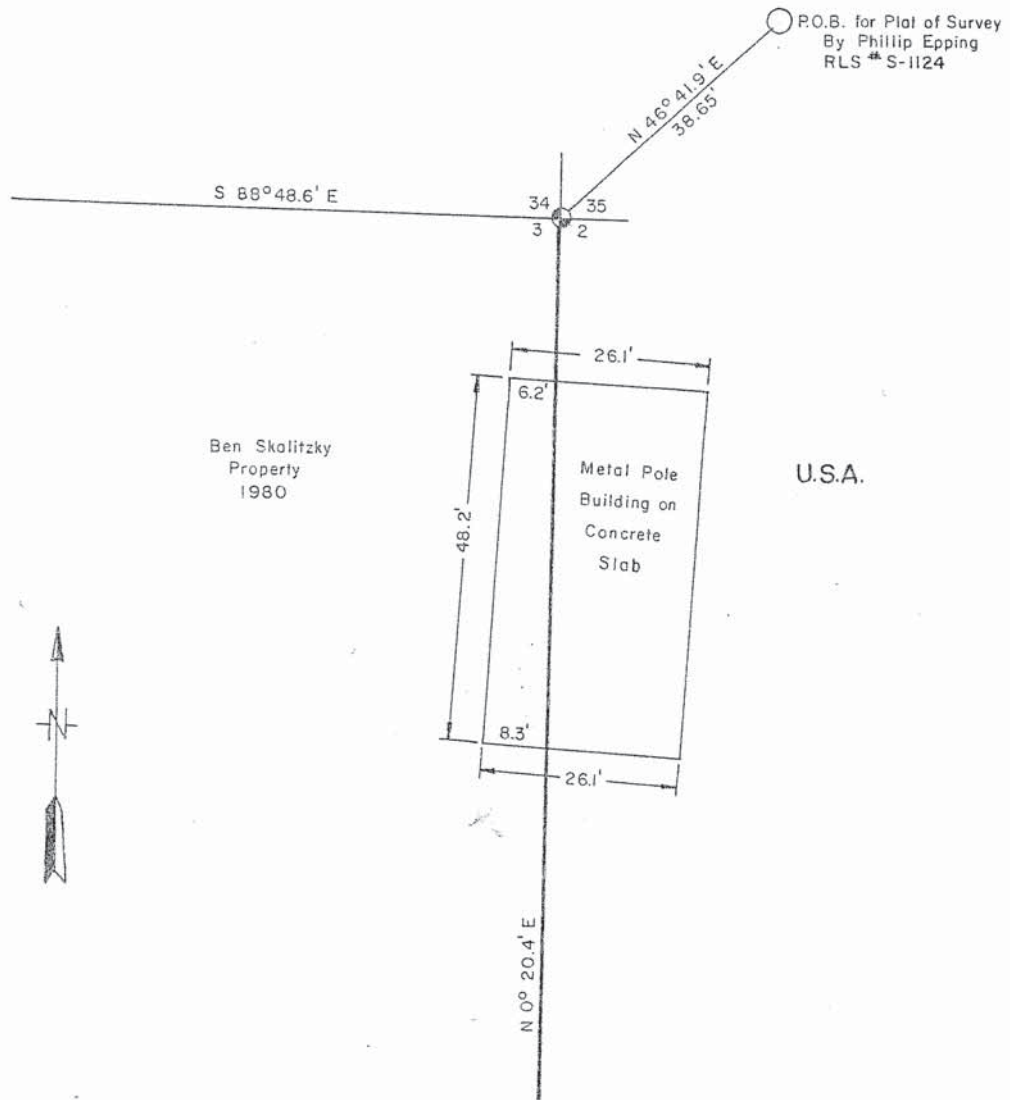
- ⊙ 2" Diameter Aluminum Monument, 30" Long, with an Aluminum Cap.
- ⊙ 2" Inside Diameter, Galvanized Iron Pipe, 5 Ft. Long, Filled with Concrete, with a Brass Cap.
- Marked Boundary Line of U.S. Government Land.

CONVERSION FACTOR:
Feet to Meters 0.304801
Meters to Feet 3.28083

OCONTO COUNTY
SURVEYOR

58 rec 2/23/83

154



34.7

Stock No. 26273

Sheet 3 of 5

SURVEY NOTES

This survey of the township line between the $\frac{1}{4}$ corners to Sections 3-34 and Sections 2-35 and the section line between the section corners to Sections 2-3-34-35 and Sections 2-3-10-11, Township 31-32 North, Range 15 East, Fourth Principal Meridian, was made by the U.S. Department of Agriculture, Forest Service.

The U.S. Government holds title to lands adjoining said section line in Section 2, NW $\frac{1}{4}$ NW $\frac{1}{4}$ and the NW $\frac{1}{4}$ SW $\frac{1}{4}$, acquired from 1934 to 1946.

The purpose of this survey is to restore the original section and quarter corners of the 1857 survey, establish the north and south $\frac{1}{16}$ corners between sections 2-3 and identify the building location near the section corner to Sections 2-3-34-35, Townships 31-32 North, Range 15 East.

The corner positions recovered, restored and established by this survey are marked by the monument described in the map legend.

The corner positions established were located to an accuracy of one part in 3000.

The bearings between corner positions are true bearings as determined by solar observations.

The field notes of this survey and a copy of this plat are on file in the Forest Supervisor's Office at Rhinelander, Wisconsin.

CORNERS RECOVERED AND RESTORED

1. Section Corner to Sections 2-3-34-35, T.31-32N., R.15E.
Corner position found marked by an oak post point from which remains of two very large (36"-40") white pine stumps bear; 1.) N.6 $\frac{1}{4}$ °E. 105 lks; 2.) S.58 $\frac{1}{4}$ °E, 129 $\frac{1}{2}$ lks. as called for in Nathan Smith's restoration survey of 1921.
Corner references:

| | | |
|---|---------|------------|
| Red Pine 12" | N.42°E. | 42.20 feet |
| Red Pine 14" | S.56°E. | 34.82 feet |
| Red Pine 12" | S.68°W. | 10.41 feet |
| Steel sign post | South | 1.4 feet |
| 2" X 3' Galv. iron pipe placed by Resvick (S-802) in error and remarked P.O.B. bears N.46°E., 38.65' from corner. (Doc. Number 312099.) | | |

2. Section Corner to Sections 2-3-10-11, T.31N., R.15E.
Corner position found marked by a squared wood post in mound of dirt (as called for in Nathan Smith survey of 1921). with remains of 3 original pine bearing trees, the southeast one scribed.
Corner references:

| | | |
|-----------------|-----------|------------|
| Red Pine 12" | N.38°E. | 8.86 feet |
| Red Pine 8" | S.43°E. | 22.50 feet |
| Red Pine 10" | South | 14.04 feet |
| Red Pine 10" | S.82°W. | 21.20 feet |
| Steel sign post | Southeast | 0.6 feet |

34-3

Stock No. 26273

Sheet 4 of 5

3. Quarter Corner to Sections 2-35, T.31-32N., R.15E.

Corner position found marked by a Forest Service monument placed in 1969 by S-802 and certificate filed in Oconto County Courthouse as Document Number 259669.

4. Quarter Corner to Sections 3-34, T.31-32N., R.15E.

Corner position restored at intersection of fence westerly and center line of County Highway "T". This position is confirmed by Nathan Smith's survey of 1921.

Corner references:

| | | |
|----------------|---------|-------------|
| White Birch 7" | S.89°E. | 73.42 feet |
| Red Oak 18" | S.40°E. | 128.81 feet |

5. Quarter Corner to Sections 2-3, T.31N., R.15E.

Corner position found marked by a decayed wooden post in mound of dirt (as described in Nathan Smith's survey of 1921).

Corner references:

| | | |
|-----------------|-----------|------------|
| Red Pine 12" | N.48°E. | 15.15 feet |
| Red Pine 9" | N.74°W. | 62.54 feet |
| Red Pine 10" | N. 4°W. | 48.03 feet |
| Steel sign post | Northeast | 1.0 feet |

6. East Sixteenth Corner to Sections 3-34, T.31-32N., R.15E.

Corner position found marked by a post hole in mound of earth with bearing tree stump as called for in Nathan Smith's survey of 1921.

Corner references:

| | | |
|-----------------|---------|-------------|
| White Birch 12" | S.44°E. | 41.94 feet |
| Red Maple 14" | S.42°W. | 16.07 feet |
| Red Oak 14" | N.82°W. | 105.32 feet |
| Steel sign post | South | 2.0 feet |

CORNERS ESTABLISHED1. North Sixteenth Corner to Sections 2-3.

Corner position established on line and at record proportionate measurement between the west quarter corner and the northwest section corner to Section 2.

Corner references:

| | | |
|-----------------|---------|------------|
| Red Pine 8" | N.59°E. | 15.68 feet |
| Red Pine 8" | S.13°E. | 32.79 feet |
| Red Pine 6" | S.79°W. | 44.89 feet |
| Steel sign post | South | .4 feet |

2. South Sixteenth Corner to Sections 2-3.

Corner position established on line and midpoint between the west quarter corner and the southwest section corner to Section 2.

Corner references:

| | | |
|-----------------|---------|------------|
| Red Pine 6" | N.62°E. | 19.76 feet |
| Red Pine 8" | S.78°E. | 39.05 feet |
| Red Pine 10" | S.38°E. | 34.92 feet |
| Steel sign post | North | 1.0 feet |

34-4

Stock No. 26273

Sheet 5 of 5

SURVEYOR'S AFFIDAVIT

State of Wisconsin] SS
County of Oconto]

I, Milo E. Stefan, Cadastral Surveyor, U.S. Forest Service and a registered land surveyor in the State of Wisconsin, hereby certify that I have surveyed, restored, and established the aforesaid corners in Township 31-32 North, Range 15 East, Fourth Principal Meridian, State of Wisconsin.

The plat map and the notes herewith are a correct representation of the land surveyed. I have surveyed in accordance with the rules for survey of the public lands and with the statutes of the State of Wisconsin.

*Milo E. Stefan*

Cadastral Surveyor, U.S. Forest Service
R.L.S. State of Wisconsin
Certificate S-1558.

Date of Survey: 1980