

Intersection/Spot Location Annual Crash Rate Formula:

Annual Crash Rate (Crashes/Million Entering Vehicles) = Total Crashes/Year X 1,000,000/(ADT X 365)

***NOTE:** When the annual number of crashes at an intersection or spot location exceeds a rate of 1.5 crashes per million entering vehicles, a potential safety improvement may be warranted.*

Highway: USH 45

Intersection: USH 45 & Merrill Ave

Description: City of Fond du Lac

Number of Years (n): → 5

Total Number of Crashes: → 20

Total Number of FAT Crashes: 0 0.0%

Total Type A Inj 0

Total Type B Inj 1

Total Type C Inj 5

Total Number of Inj Crashes: 6 30.0%

Total Number of PD Crashes: 8 40.0%

Average Entering Vehicles: → 15500

Average Yearly Total Crash Rate: → 0.71

(total crashes/n) * 1000000 / (entering adt * 365)

Intersection/Spot Location Annual Crash Rate Formula:

Annual Crash Rate (Crashes/Million Entering Vehicles) = Total Crashes/Year X 1,000,000/(ADT X 365)

***NOTE:** When the annual number of crashes at an intersection or spot location exceeds a rate of 1.5 crashes per million entering vehicles, a potential safety improvement may be warranted.*

Highway: USH 45

Intersection: USH 45 & Rees Ave

Description: City of Fond du Lac

Number of Years (n): → 5

Total Number of Crashes: → 24

Total Number of FAT Crashes: 0 0.0%

Total Type A Inj 1

Total Type B Inj 2

Total Type C Inj 4

Total Number of Inj Crashes: 7 29.2%

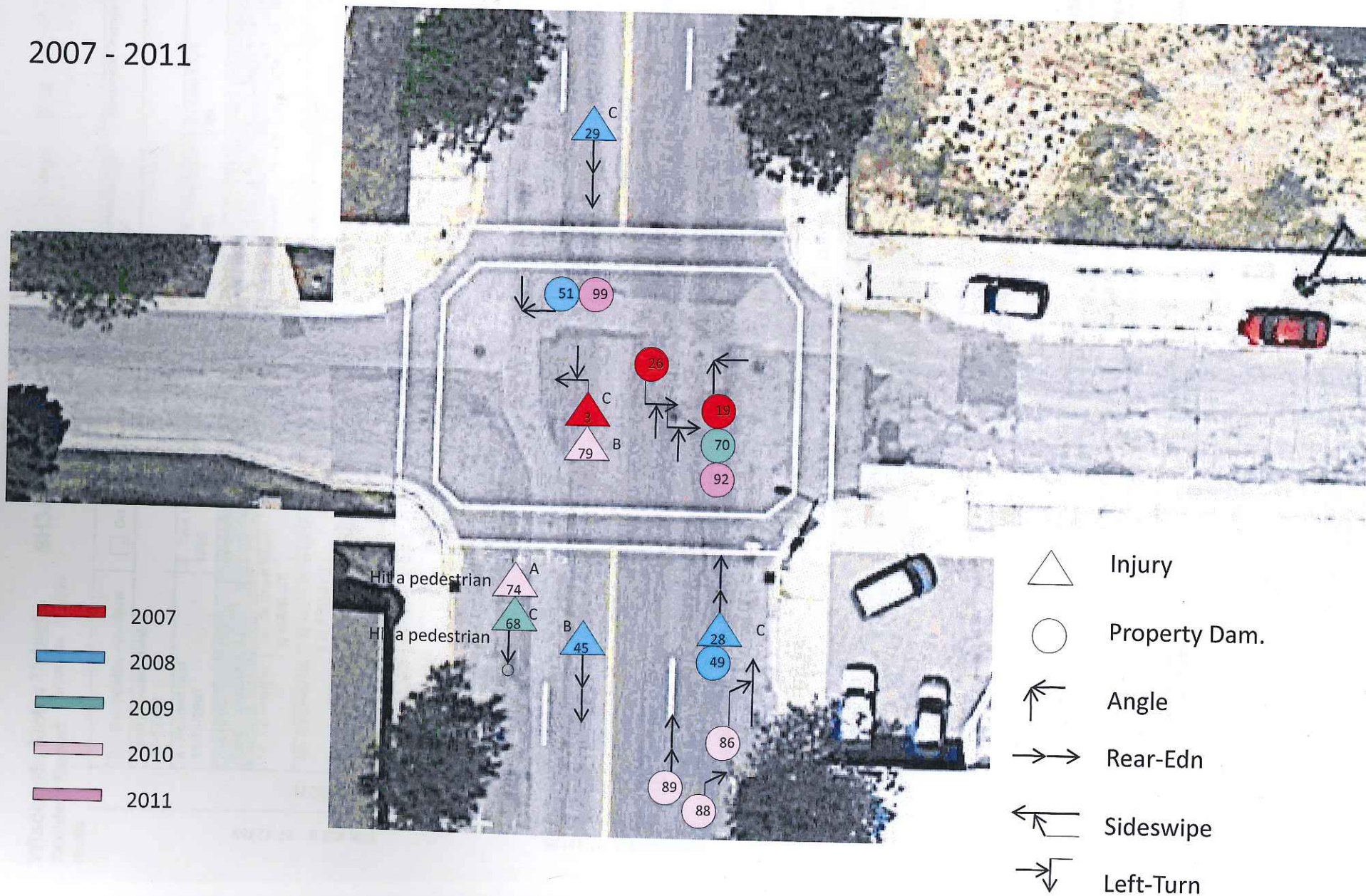
Total Number of PD Crashes: 10 41.7%

Average Entering Vehicles: → 15500

Average Yearly Total Crash Rate: → 0.85

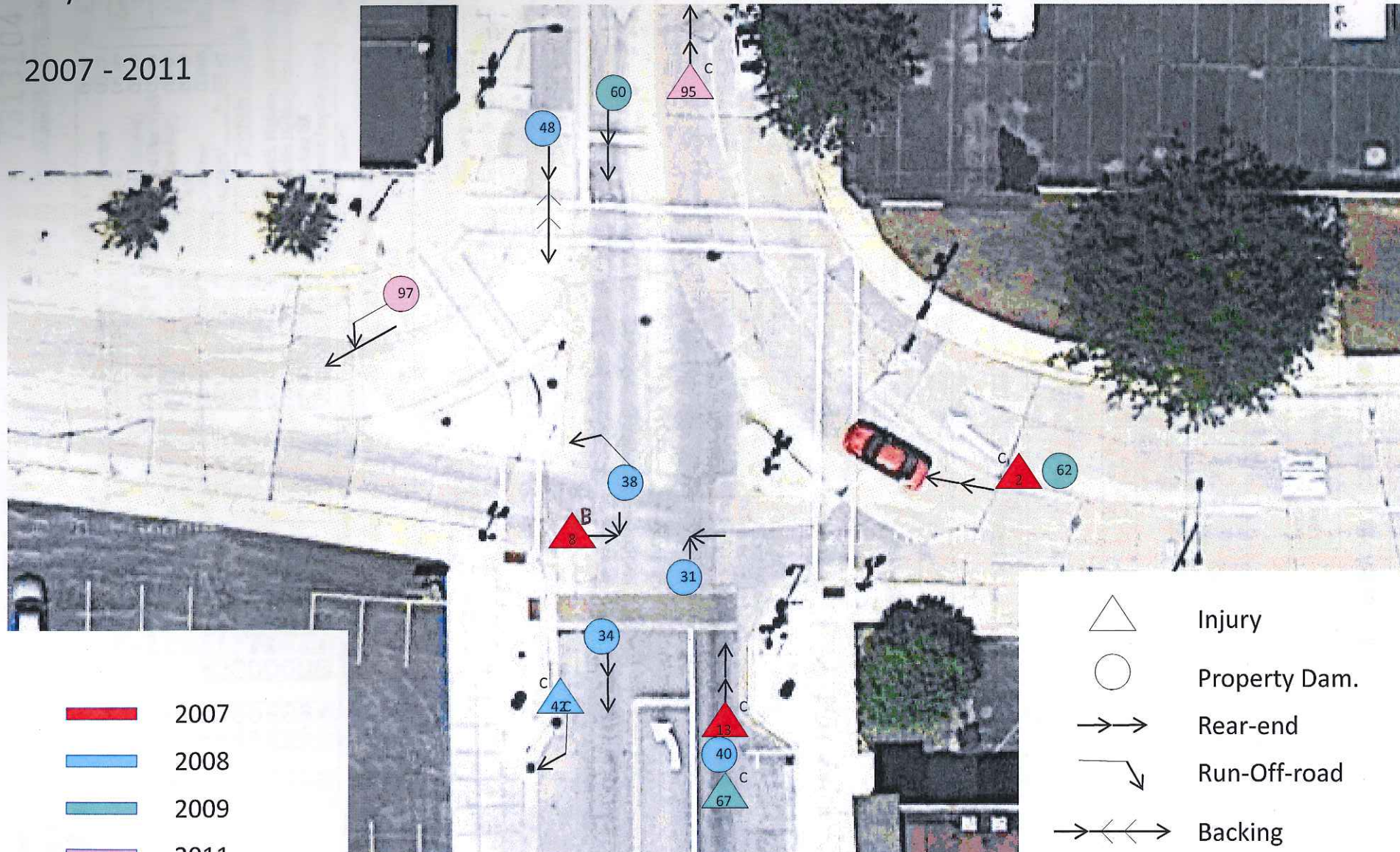
(total crashes/n) * 1000000 / (entering adt * 365)

2007 - 2011

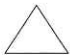








USH 45 & Merrill Ave City of Fond Du Lac

2007 - 2011



No crashes in 2010

-  Injury
-  Property Dam.
-  Rear-end
-  Run-Off-road
-  Backing
-  Angle
-  Sideswipe