

SIGN BRIDGE LOCATIONS - DUNN COUNTY

SIGN BRIDGE	HIGHWAY	LOCATION	DIR OF TRAVEL
S-17-4	IH 94	0.5 MILES EAST OF STH 25, ON BRIDGE B-17-40	EB
S-17-5	USH 12/STH 29	AT IH 94 WB EXIT GORE	WB
S-17-6	STH 29	SOUTH OF STH 40 OVERPASS	WB
S-17-7	STH 29	ON STH 40 OVERPASS, ON BRIDGE B-17-182	WB
S-17-8	IH 94	0.5 MILES EAST OF WEIGH STATION	WB
S-17-9	IH 94	0.25 MILES EAST OF WEIGH STATION	WB

SIGN BRIDGE LOCATIONS - EAU CLAIRE COUNTY

SIGN BRIDGE	HIGHWAY	LOCATION	DIR OF TRAVEL
S-18-5	IH 94	C/D 200' EAST OF GORE TO USH 53 NB/SB	WB
S-18-6	IH 94	C/D AT GORE SPLIT TO USH 53 SB/NB	WB
S-18-8	USH 53	AT EXIT TO IH 94 EB	SB
S-18-17	STH 37	MOUNTED ON BRIDGE B-18-25 (IH 94 EB)	NB
S-18-18	STH 37	MOUNTED ON BRIDGE B-18-26 (IH 94 WB)	SB
S-18-27	USH 53	0.2 MILES NORTH OF STH 93	NB
S-18-28	USH 53	500' NORTH OF BIRCH STREET/ CTH O	SB
S-18-31	STH 124	AT STARR AVENUE, ON BRIDGE B-18-133	NB
S-18-34	USH 53	0.2 MILES SOUTH OF STH 124	NB
S-18-35	USH 53	0.25 MILES NORTH OF STH 124	SB
S-18-37	STH 124	0.2 MILES EAST OF USH 12/CLAIREMONT AVENUE	SB
S-18-40	USH 53	0.22 MILES NORTH OF EDDY LANE	NB
S-18-41	STH 124	0.2 MILES EAST OF IH 94	SB
S-18-43	USH 53	AT GORE TO CLAIREMONT AVENUE EB & WB	SB
S-18-44	USH 53	AT KIRK STREET OVER ALL LANES	SB/NB
S-18-45	USH 53	SOUTH OF BRACKET AVENUE	SB/NB
S-18-47	USH 53	USH 12 (CLAIREMONT AVE.)/USH 53 INTERCHANGE	NB RAMP
S-18-50	IH 94	1000' WEST OF USH 53	WB
S-18-53	USH 12	400' EAST OF AMERICAN BOULEVARD	WB
S-18-54	USH 12	780' EAST OF VINE STREET	WB

SIGN BRIDGE LOCATIONS - ST. CROIX COUNTY

SIGN BRIDGE	HIGHWAY	LOCATION	DIR OF TRAVEL
S-55-2	IH 94	0.43 MILES EAST OF 11TH STREET BRIDGE	EB
S-55-9	IH 94	AT EXIT TO CARMICHAEL ROAD	EB
S-55-11	IH 94	0.5 MILES EAST OF EXIT 1 (MP 1.047 FROM BRIDGE)	EB
S-55-12	IH 94	AT EXIT TO CARMICHAEL ROAD	EB
S-55-14	IH 94	ADVANCE FOR STH 35 NB (ON ST. CROIX RIVER BRIDGE)	EB
S-55-15	IH 94	AT EXIT TO STH 35 NB (0.1 MILES EAST OF ST. CROIX RIVER BRIDGE)	EB
S-55-20	IH 94	0.25 MILES WEST OF STH 35 SB	EB
S-55-21	IH 94	0.1 MILES WEST OF STH 35 SB	WB
S-55-23	IH 94	0.36 MILES EAST OF STH 35 SB	WB
S-55-25	STH 35	0.5 MILES SOUTH OF IH 94	NB
S-55-26	STH 35	0.25 MILES SOUTH OF IH 94	NB
S-55-27	IH 94	USH 12/CTH U, ON BRIDGE B-55-151	EB
S-55-30	IH 94	1 MILE WEST OF WEIGH STATION	EB
S-55-31	IH 94	0.5 MILES WEST OF WEIGH STATION	EB

VARIOUS INTERSTATE FREEWAYS
AND NON-INTERSTATE HIGHWAYS

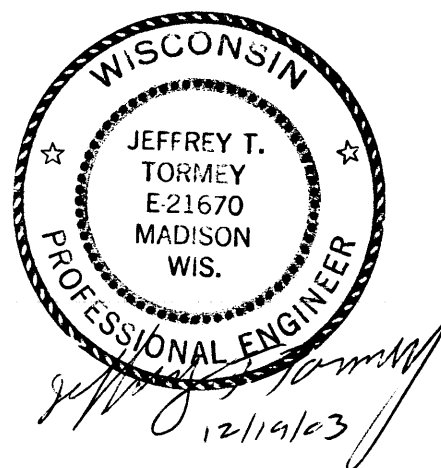
LIST OF DRAWINGS

1. SIGN BRIDGE LOCATIONS
- 2-3. SIGNING QUANTITIES
- 4-5. SIGNING DETAIL DRAWINGS
6. ELECTRICAL QUANTITIES AND DETAIL DRAWING
- 7-8. FOUNDATION QUANTITIES
9. FOUNDATION DETAIL DRAWINGS
10. WALKWAY QUANTITIES, DETAIL DRAWING AND DETAILS
11. TOWER QUANTITIES
12. TOWER DETAIL DRAWINGS
13. TRUSS QUANTITIES
- 14-15. TRUSS DETAIL DRAWINGS

SIGN BRIDGE	COUNTY
S - 9	CHIPPEWA
S - 10	CLARK
S - 17	DUNN
S - 18	EAU CLAIRE
S - 55	ST. CROIX

GENERAL NOTES

1. DRAWINGS SHALL NOT BE SCALED.
2. ALL DIMENSIONS BASED ON AS-BUILT PLANS. CONTRACTOR SHALL VERIFY ALL DIMENSIONS AND EXACT LOCATION OF REPAIRS PRIOR TO FABRICATION OF MEMBERS.
3. FIELD INSPECTION REPORTS FROM WHICH THESE REPAIR PLANS WERE DEVELOPED ARE AVAILABLE FOR REFERENCE AT THE DISTRICT OFFICE.



Wilbur Smith Associates

NO.	DATE	REVISION	BY
STATE OF WISCONSIN DEPARTMENT OF TRANSPORTATION STRUCTURES DESIGN SECTION			
STRUCTURE			
COUNTY	VARIES		TOWN/CITY/VILLAGE VARIES
DESIGN SPEC.	AASHTO 2001	LOAD	CONST. SPEC. 2003
DESIGNED BY	DDS	DESIGN CK'D. JTT	DRAWN BY DDS
APPROVED		DATE	
CHIEF STRUCTURAL DESIGN ENGINEER		DATE	
SIGN BRIDGE LOCATIONS		SHEET 1 OF 15	
		DATE: DEC. 2003	

FILE =
SCALE =

TABLE OF ESTIMATED QUANTITIES

SIGN BRIDGE NO.	REPLACE MISSING SIGN BRIDGE ID PLAQUE SPV.0060.02 EACH	REPLACE SIGN SUPPORT BRACKET SPV.0060.03 EACH	REPLACE SIGN PANEL CONNECTOR SPV.0060.04 EACH	REPLACE SIGN CONNECTION CLAMP SPV.0060.05 EACH
S-17-4	1 - SEE STANDARD DETAIL DRAWING 12A4-1			
S-17-5	1 - SEE STANDARD DETAIL DRAWING 12A4-1			
S-17-6	1 - SEE STANDARD DETAIL DRAWING 12A4-1			
S-17-7	1 - SEE STANDARD DETAIL DRAWING 12A4-1			
S-17-8	1 - SEE STANDARD DETAIL DRAWING 12A4-1			
S-17-9	1 - SEE STANDARD DETAIL DRAWING 12A4-1			
S-18-6			2 - 3RD SIGN SUPPORT FROM SOUTH TOWER	
S-18-17			5 - SEE DETAIL DRAWING	
S-18-18		1 - REPLACE LEFT SIGN SUPPORT OF LEFT SIGN		
S-18-43			5 - SEE DETAIL DRAWING	
S-18-47				2 - SEE DETAIL DRAWING
S-18-53	1 - SEE STANDARD DETAIL DRAWING 12A4-1			
S-18-54	1 - SEE STANDARD DETAIL DRAWING 12A4-1			
S-55-2				
S-55-9				4 - SEE DETAIL DRAWING
S-55-11			12 - SEE DETAIL DRAWING	
S-55-12			2 - 3RD AND 4TH SIGN SUPPORT FROM POST	
S-55-14			11 - SEE DETAIL DRAWING	
S-55-15			9 - SEE DETAIL DRAWING	
S-55-20			1 - 5TH SIGN SUPPORT FROM SOUTH POST	
S-55-27				
S-55-30	1 - SEE STANDARD DETAIL DRAWING 12A4-1			
S-55-31	1 - SEE STANDARD DETAIL DRAWING 12A4-1			

NOTE:
SEE NEXT SHEET FOR INCIDENTAL
ITEMS RELATED TO SIGNING.



CONSTRUCTION NOTES

1. CONTRACTOR SHALL VERIFY EXACT LOCATION OF ALL REPAIRS.
2. CONTRACTOR SHALL FIELD VERIFY THE SIZE OF THE ITEM REQUIRED.
3. ALL STAINLESS STEEL BOLTS, LOCK-WASHERS, AND NUTS SHALL CONFORM TO ASTM A276. ANY OF THE 300 SERIES WHICH HAVE A MINIMUM YIELD OF 40,000 PSI AND ELONGATION OF 15% FOR OVER 3/4" AND 12% FOR 3/4" AND UNDER SHALL BE USED,

NO.	DATE	REVISION	BY	
STATE OF WISCONSIN DEPARTMENT OF TRANSPORTATION STRUCTURES DESIGN SECTION				
STRUCTURE				
CONST. SPEC.	2003	DRAWN BY	DDS	PLANS CK'D. JTT
SIGNING QUANTITIES			SHEET 2 OF 15	
			DATE: DEC. 2003	

SCALE =

TABLE OF ESTIMATED QUANTITIES

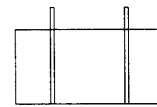
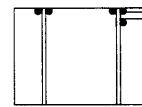
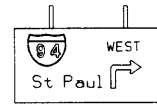
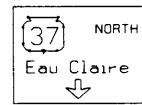
SIGN BRIDGE NO.	S1 RECONNECT DISCONNECTED SIGN PANEL CONNECTOR SPV.0060.01 EACH INCIDENTAL	S2 RECONNECT BORDER STRIP ON SIGN PANEL SPV.0060.01 EACH INCIDENTAL	S3 REMOVE DEBRIS SPV.0060.01 EACH INCIDENTAL	S4 REPLACE BOLTS AT CONNECTION CLAMP SPV.0060.01 EACH INCIDENTAL
S-17-4				
S-17-5				
S-17-6				
S-17-7	1 - LEFT SIGN SUPPORT			
S-17-8				
S-17-9				
S-18-6				
S-18-17				
S-18-18		1 - RIGHT SIDE OF LEFT SIGN		
S-18-43				
S-18-47				3 - SEE DETAIL DRAWING
S-18-53				
S-18-54				
S-55-2	2 - TOP OF 1ST AND 2ND SIGN SUPPORT FROM SOUTH TOWER			
S-55-9				
S-55-11	1 - TOP OF 4TH SIGN SUPPORT FROM SOUTH TOWER			
S-55-12				
S-55-14				
S-55-15				
S-55-20				
S-55-27			1 - BETWEEN SIGN AND BRIDGE	
S-55-30				
S-55-31				

CONSTRUCTION NOTES

1. CONTRACTOR SHALL VERIFY EXACT LOCATION OF ALL REPAIRS.
2. CONTRACTOR SHALL FIELD VERIFY THE SIZE OF THE ITEM REQUIRED.
3. ALL STAINLESS STEEL BOLTS, LOCK-WASHERS, AND NUTS SHALL CONFORM TO ASTM A276. ANY OF THE 300 SERIES WHICH HAVE A MINIMUM YIELD OF 10,000 PSI AND ELONGATION OF 15% FOR OVER 3/4" AND 12% FOR 3/4" AND UNDER SHALL BE USED,



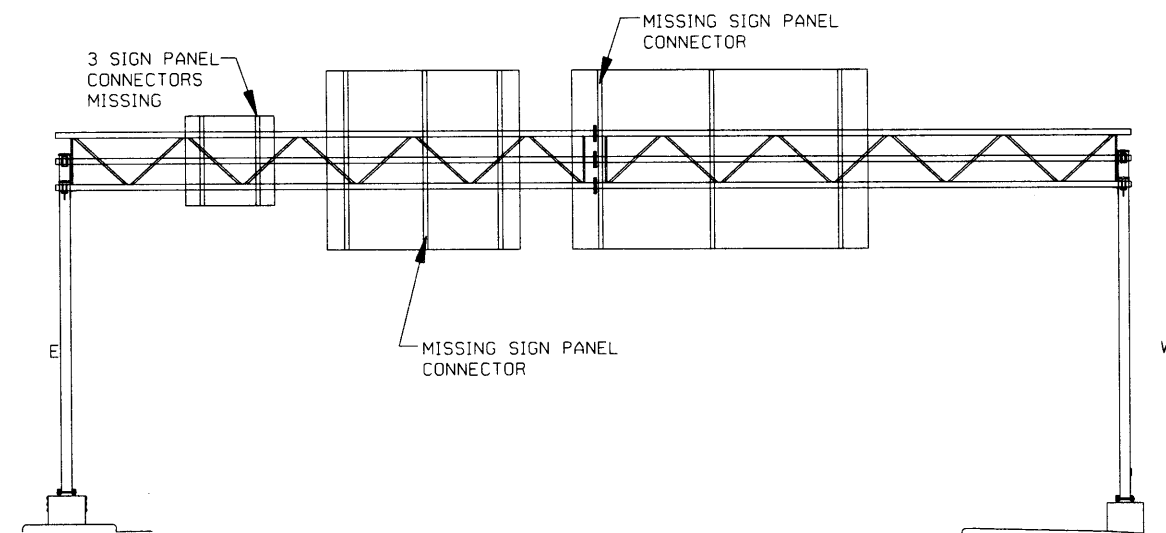
NO.	DATE	REVISION	BY
STATE OF WISCONSIN DEPARTMENT OF TRANSPORTATION STRUCTURES DESIGN SECTION			
STRUCTURE			
CONST. SPEC.	2003	DRAWN BY	DDS
		PLANS CK'D.	JTT
SIGNING QUANTITIES		SHEET 3 OF 15	
		DATE: DEC. 2003	



• MISSING SIGN PANEL CONNECTOR

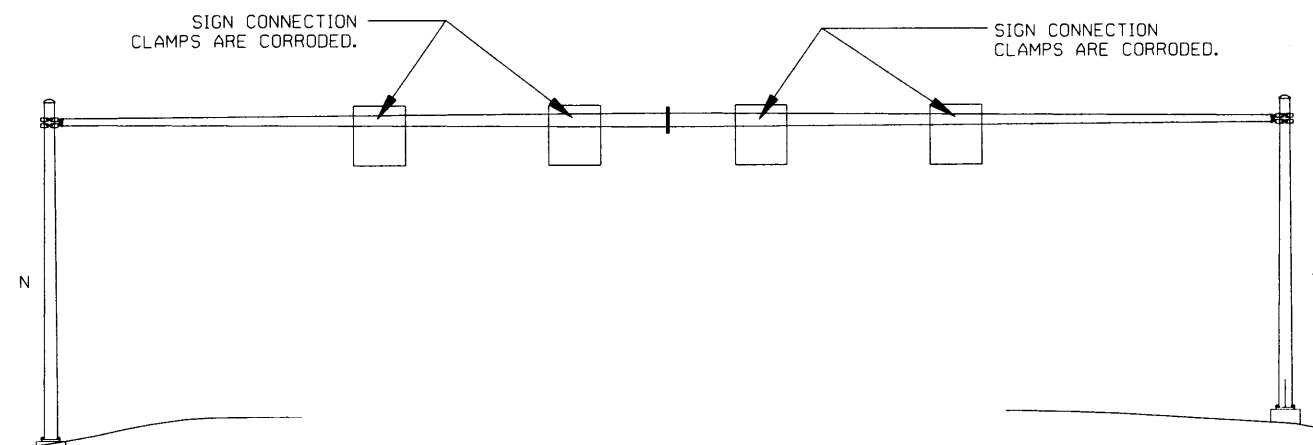
S-18-17

LOOKING NORTH



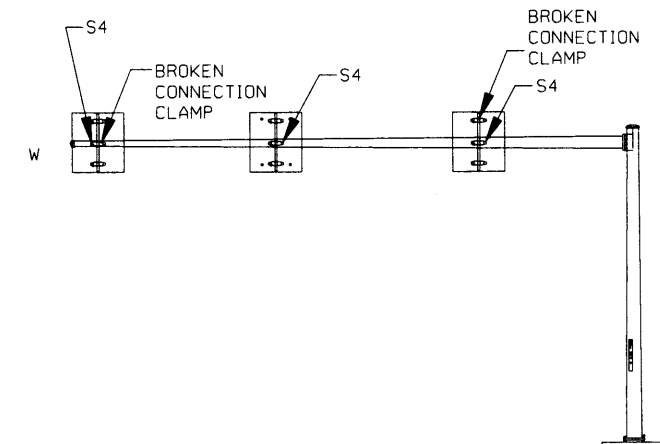
S-18-43

LOOKING SOUTH



S-55-9

LOOKING EAST



S-18-47

LOOKING NORTH

NOTES

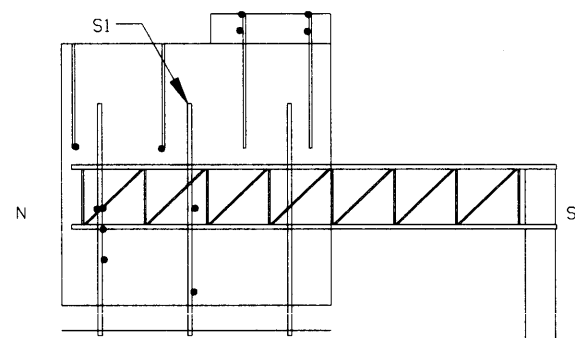
- S1 - RECONNECT DISCONNECTED SIGN PANEL CONNECTOR.
- S2 - RECONNECT BORDER STRIP ON SIGN PANEL.
- S3 - REMOVE DEBRIS.
- S4 - REPLACE BOLTS AT CONNECTION CLAMP.



ENGINEERS
PLANNERS
ECONOMISTS

Wilbur Smith Associates

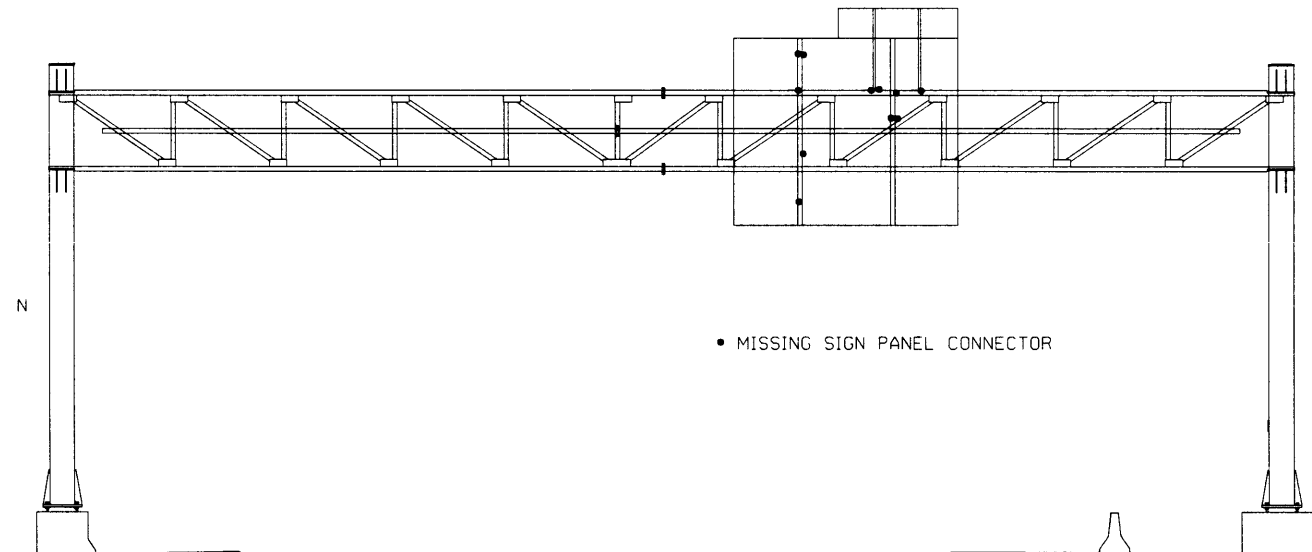
NO.	DATE	REVISION	BY
STATE OF WISCONSIN DEPARTMENT OF TRANSPORTATION STRUCTURES DESIGN SECTION			
STRUCTURE			
CONST. SPEC.	2003	DRAWN BY	DDS
		PLANS CK'D.	JTT
SIGNING DETAIL DRAWINGS		SHEET 4 OF 15	
		DATE: DEC. 2003	



• MISSING SIGN PANEL CONNECTOR

S-55-11

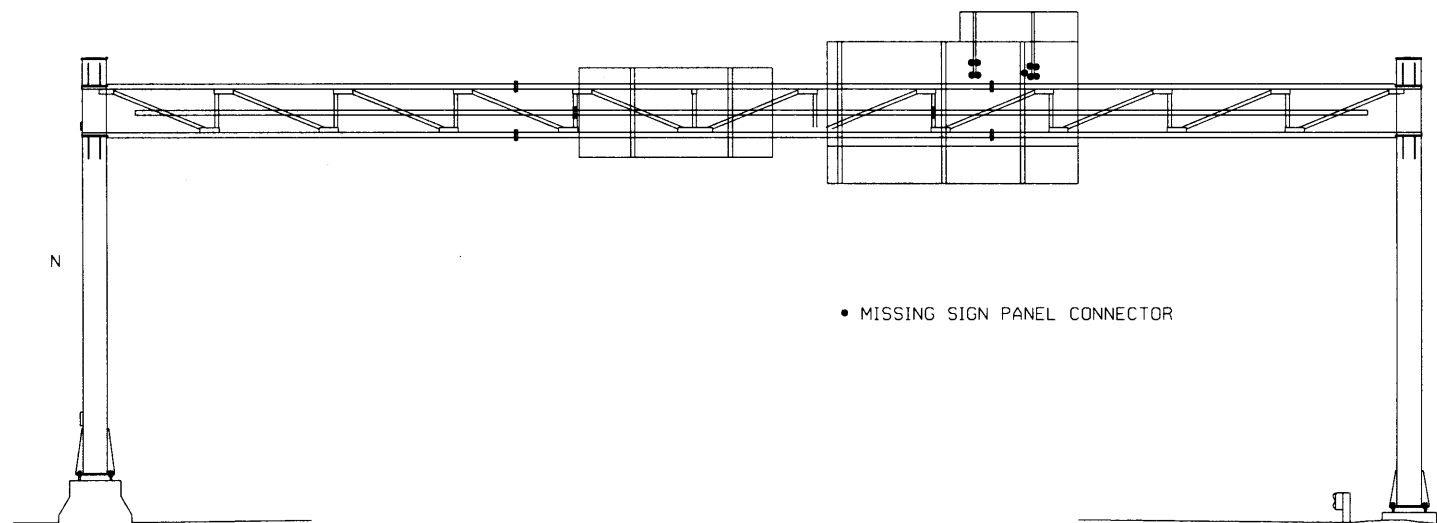
LOOKING EAST



• MISSING SIGN PANEL CONNECTOR

S-55-14

LOOKING EAST



• MISSING SIGN PANEL CONNECTOR

S-55-15

LOOKING EAST

NOTES

- S1 - RECONNECT DISCONNECTED SIGN PANEL CONNECTOR.
- S2 - RECONNECT BORDER STRIP ON SIGN PANEL.
- S3 - REMOVE DEBRIS.
- S4 - REPLACE BOLTS AT CONNECTION CLAMP.

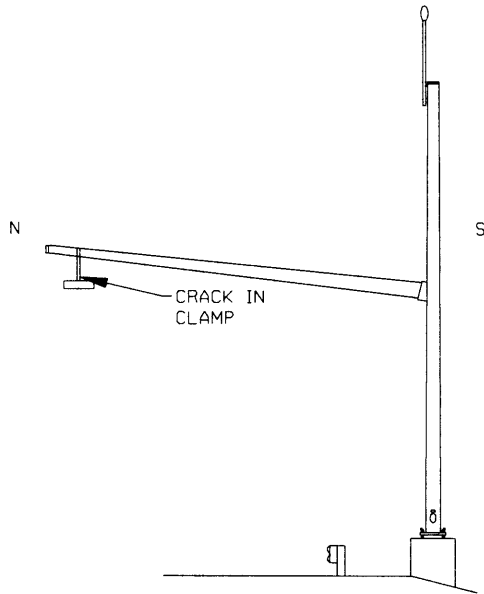


Wilbur Smith Associates

NO.	DATE	REVISION	BY
STATE OF WISCONSIN DEPARTMENT OF TRANSPORTATION STRUCTURES DESIGN SECTION			
STRUCTURE			
CONST. SPEC.	2003	DRAWN BY DDS	PLANS CK'D. JTT
SIGNING DETAIL DRAWINGS		SHEET 5 OF 15 DATE: DEC. 2003	

TABLE OF ESTIMATED QUANTITIES

SIGN BRIDGE NO.	REPLACE HANDHOLE COVER SPV.0060.06 EACH	REPLACE CLAMP ATTACHING SENSOR SPV.0060.07 EACH	E1 REPLACE HANDHOLE COVER SCREWS SPV.0060.01 EACH INCIDENTAL
S-18-41			2 - AT BOTTOM NORTHEAST TOWER
S-18-54	1 - AT BOTTOM HANDHOLE		
S-55-30		1 - SEE DETAIL DRAWING	



S-55-30
LOOKING EAST

CONSTRUCTION NOTES

1. CONTRACTOR SHALL VERIFY EXACT LOCATION OF ALL REPAIRS.
2. CONTRACTOR SHALL FIELD VERIFY THE SIZE OF THE ITEM REQUIRED.
3. ALL STAINLESS STEEL BOLTS, LOCK-WASHERS, AND NUTS SHALL CONFORM TO ASTM A276. ANY OF THE 300 SERIES WHICH HAVE A MINIMUM YIELD OF 40,000 PSI AND ELONGATION OF 15% FOR OVER 3/4" AND 12% FOR 3/4" AND UNDER SHALL BE USED.



Wilbur Smith Associates

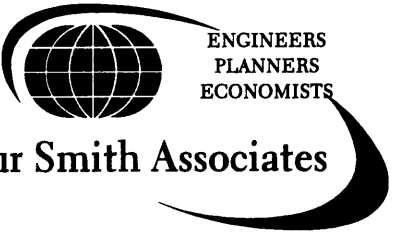
NO.	DATE	REVISION	BY
STATE OF WISCONSIN DEPARTMENT OF TRANSPORTATION STRUCTURES DESIGN SECTION			
STRUCTURE			
CONST. SPEC.	2003	DRAWN BY DDS	PLANS CK'D. JTT
ELECTRICAL QUANTITIES AND DETAIL DRAWING		SHEET 6 OF 15 DATE: DEC. 2003	

STATE PROJECT NUMBER	SHEET NO.
9227-00-67	

TABLE OF ESTIMATED QUANTITIES

SIGN BRIDGE NO.	FILL FOUNDATION SPV.0060.08 FACH	REMOVE GROUT SPV.0060.09 EACH	TIGHTEN ANCHOR BOLT NUT SPV.0060.10 EACH	TIGHTEN ANCHOR BOLT LEVELING NUT SPV.0060.11 EACH	TIGHTEN ANCHOR BOLT LOCKING NUT SPV.0060.12 EACH
S-17-5			8 - SEE DETAIL DRAWING	1 - SEE DETAIL DRAWING	12 - ALL LOCKING NUTS
S-17-6				2 - SEE DETAIL DRAWING	1 - SEE DETAIL DRAWING
S-17-9		1 - 1" THICK GROUT COVERS BASE PLATE			
S-18-8			1 - WEST CENTER ANCHOR BOLT		
S-18-28		1 - ALONG EDGE OF BASE PLATE			
S-18-34		2 - AT BOTH FOUNDATIONS	3 - SEE DETAIL DRAWING		
S-18-35			1 - AT SOUTHWEST POST		
S-18-40					
S-18-45	1 - AT EAST FOUNDATION, SEE DETAIL DRAWING				
S-18-50				1 - AT NORTHEAST CORNER	
S-55-2		1 - AT NORTH FOUNDATION			
S-55-14				3 - SEE DETAIL DRAWING	1 - SEE DETAIL DRAWING
S-55-20					1 - AT EAST BOLT OF NORTH FOUNDATION
S-55-21				3 - SEE DETAIL DRAWING	
S-55-23			3 - SEE DETAIL DRAWING	1 - SEE DETAIL DRAWING	
S-55-25				7 - SEE DETAIL DRAWING	
S-55-26				2 - SEE DETAIL DRAWING	

NOTE:
SEE NEXT SHEET FOR INCIDENTAL
ITEMS RELATED TO FOUNDATIONS.



CONSTRUCTION NOTES

- 1. CONTRACTOR SHALL VERIFY EXACT LOCATION OF ALL REPAIRS.
- 2. CONTRACTOR SHALL FIELD VERIFY THE SIZE OF THE ITEM REQUIRED.
- 3. ALL STAINLESS STEEL BOLTS, LOCK-WASHERS, AND NUTS SHALL CONFORM TO ASTM A276. ANY OF THE 300 SERIES WHICH HAVE A MINIMUM YIELD OF 40,000 PSI AND ELONGATION OF 15% FOR OVER 3/4" AND 12% FOR 3/4" AND UNDER SHALL BE USED,

NO.	DATE	REVISION	BY
STATE OF WISCONSIN DEPARTMENT OF TRANSPORTATION STRUCTURES DESIGN SECTION			
STRUCTURE			
CONST. SPEC.	2003	DRAWN BY DDS	PLANS CK'D. JTT
FOUNDATION QUANTITIES		SHEET 7 OF 15	
		DATE: DEC. 2003	

STATE PROJECT NUMBER	SHEET NO.
9227-00-67	

TABLE OF ESTIMATED QUANTITIES

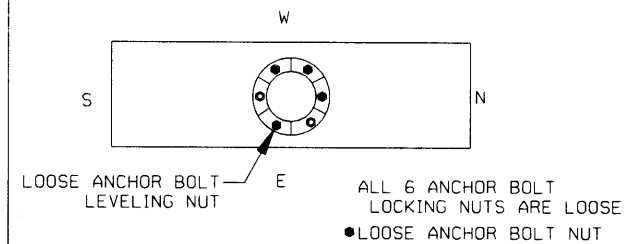
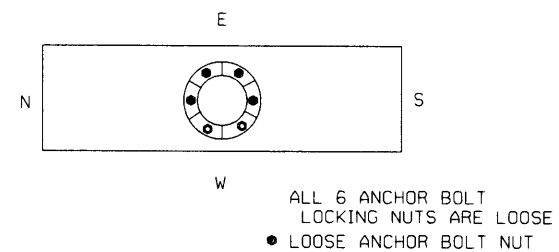
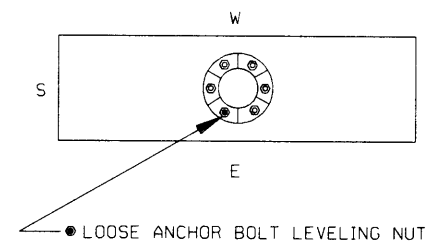
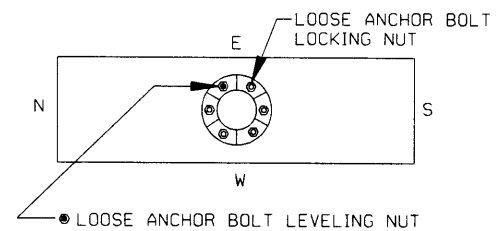
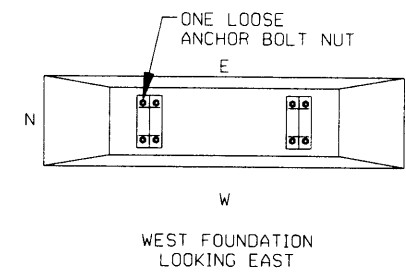
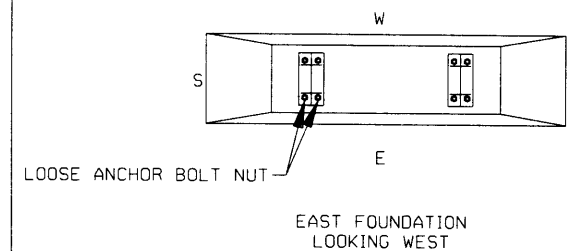
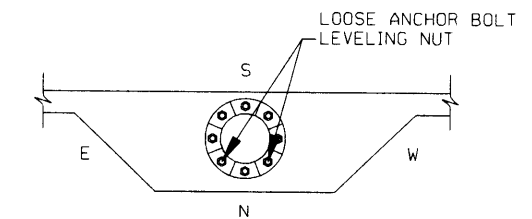
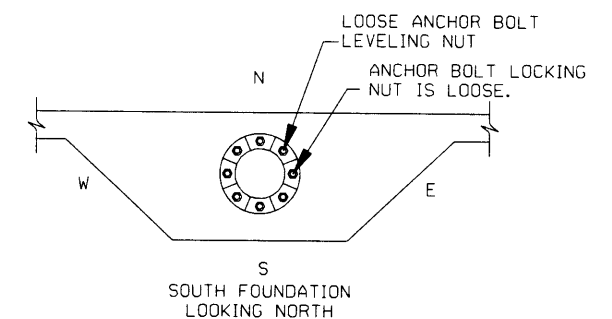
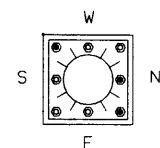
SIGN BRIDGE NO.	F1 INSTALL RODENT SCREEN SPV.0060.01 EACH INCIDENTAL	F2 CLEAN UNDER BASE PLATE SPV.0060.01 EACH INCIDENTAL	F3 CLEAN AND SEAL CRACKS IN FOUNDATION SPV.0060.01 EACH INCIDENTAL	F4 TIGHTEN LOOSE ANCHOR BOLT COVERS SPV.0060.01 EACH INCIDENTAL
S-17-5				
S-17-6				
S-17-9				
S-18-8				
S-18-28			1 - INCLUDES BASE PLATE, ANCHOR BOLTS, WASHERS & NUTS	
S-18-34			2 - INCLUDES BASE PLATE, ANCHOR BOLTS, WASHERS & NUTS	
S-18-35				
S-18-40	1 - AT BASE PLATE	1 - AT FOUNDATION		
S-18-45				
S-18-50				4 - ALL AT BASE PLATE
S-55-2				
S-55-14				
S-55-20				
S-55-21				
S-55-23				
S-55-25				
S-55-26				



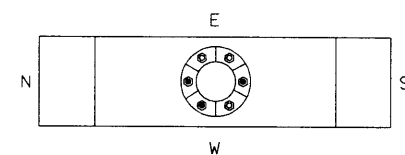
CONSTRUCTION NOTES

1. CONTRACTOR SHALL VERIFY EXACT LOCATION OF ALL REPAIRS.
2. CONTRACTOR SHALL FIELD VERIFY THE SIZE OF THE ITEM REQUIRED.
3. ALL STAINLESS STEEL BOLTS, LOCK-WASHERS, AND NUTS SHALL CONFORM TO ASTM A276. ANY OF THE 300 SERIES WHICH HAVE A MINIMUM YIELD OF 40,000 PSI AND ELONGATION OF 15% FOR OVER 3/4" AND 12% FOR 3/4" AND UNDER SHALL BE USED,

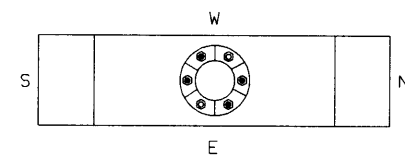
NO.	DATE	REVISION	BY
STATE OF WISCONSIN DEPARTMENT OF TRANSPORTATION STRUCTURES DESIGN SECTION			
STRUCTURE			
CONST. SPEC.	2003	DRAWN BY	PLANS CK'D. JTT
FOUNDATION QUANTITIES		SHEET 8 OF 15	
		DATE: DEC. 2003	

EAST FOUNDATION
LOOKING WESTWEST FOUNDATION
LOOKING EASTS-17-5EAST FOUNDATION
LOOKING WESTWEST FOUNDATION
LOOKING EASTS-17-6WEST FOUNDATION
LOOKING EASTEAST FOUNDATION
LOOKING WESTS-18-34NORTH FOUNDATION
LOOKING SOUTHSOUTH FOUNDATION
LOOKING NORTHS-55-14

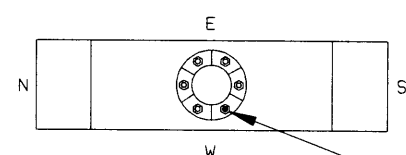
• LOOSE ANCHOR BOLT LEVELING NUT

FOUNDATION
LOOKING WESTS-55-21

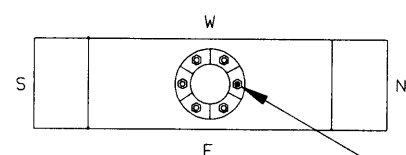
• LOOSE ANCHOR BOLT LEVELING NUT

WEST FOUNDATION
LOOKING EAST

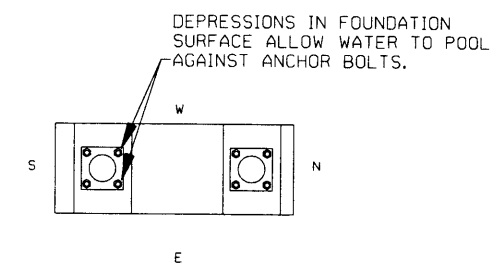
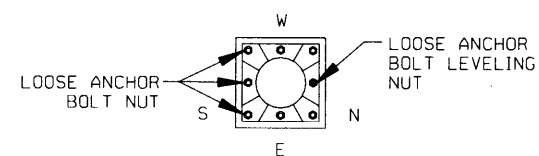
• LOOSE ANCHOR BOLT LEVELING NUT

EAST FOUNDATION
LOOKING WESTS-55-25

• LOOSE ANCHOR BOLT LEVELING NUT

WEST FOUNDATION
LOOKING EAST

• LOOSE ANCHOR BOLT LEVELING NUT

EAST FOUNDATION
LOOKING WESTS-55-26EAST FOUNDATION
LOOKING WESTS-18-45FOUNDATION
LOOKING WESTS-55-23**NOTES**

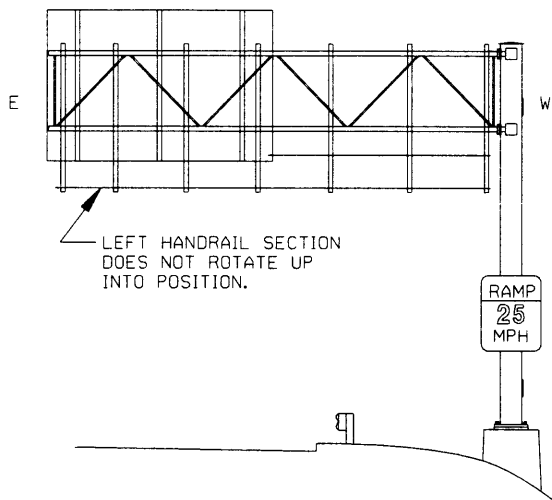
- F1 - INSTALL RODENT SCREEN.
 F2 - CLEAN UNDER BASE PLATE.
 F3 - CLEAN AND SEAL CRACKS IN FOUNDATION.
 F4 - TIGHTEN LOOSE ANCHOR BOLT COVERS.

**Wilbur Smith Associates**

NO.	DATE	REVISION	BY
STATE OF WISCONSIN DEPARTMENT OF TRANSPORTATION STRUCTURES DESIGN SECTION			
STRUCTURE			
CONST. SPEC.	2003	DRAWN BY	DDS PLANS CK'D. JTT
FOUNDATION DETAIL DRAWINGS		SHEET 9 OF 15 DATE: DEC. 2003	

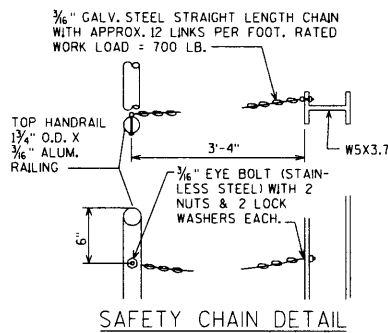
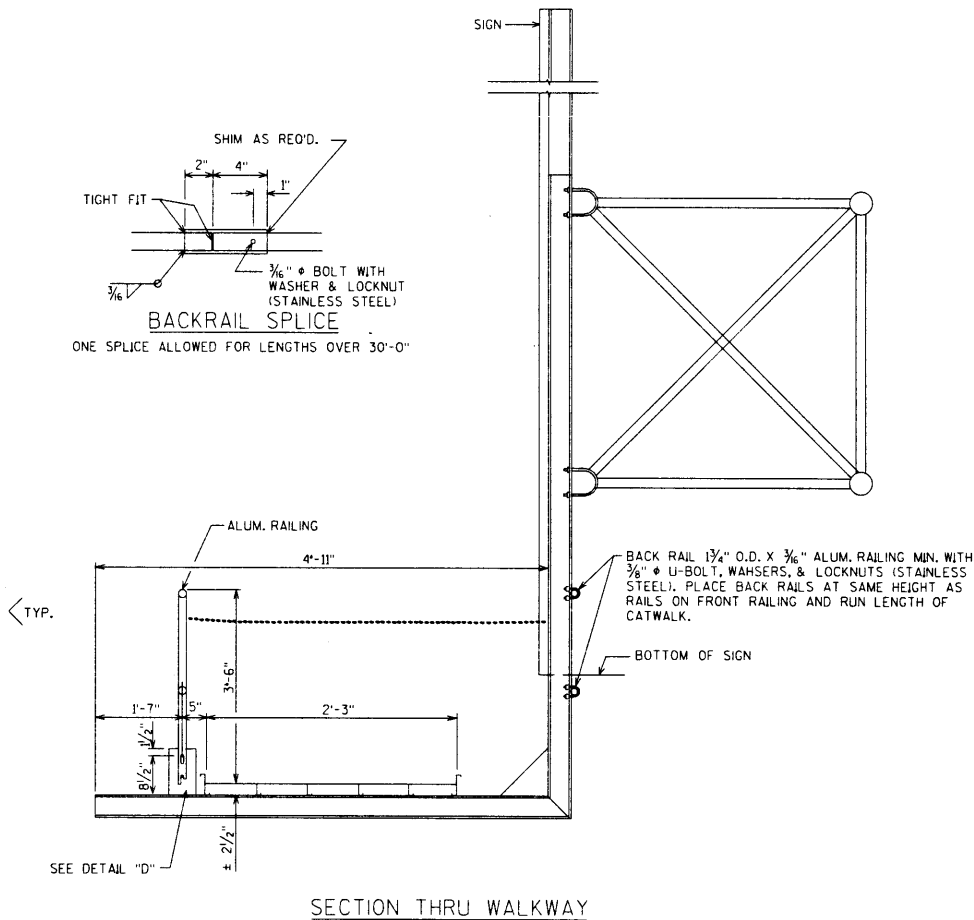
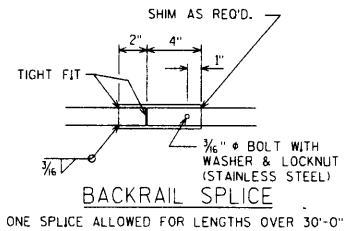
TABLE OF ESTIMATED QUANTITIES

SIGN BRIDGE NO.	MODIFY NON-FUNCTIONING WALKWAY RAILING
5-18-8	SPV.0105 LS 1 - LEFT SECTION, SEE DETAIL DRAWING

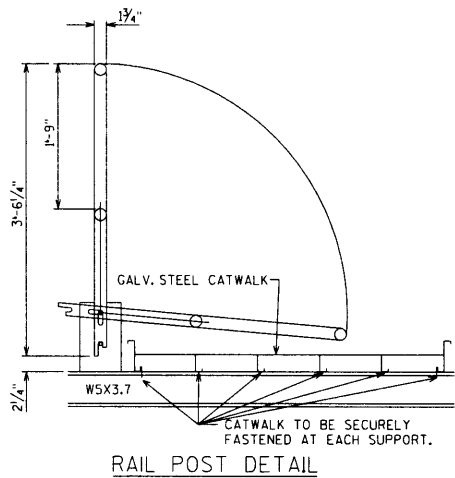


LOOKING SOUTH

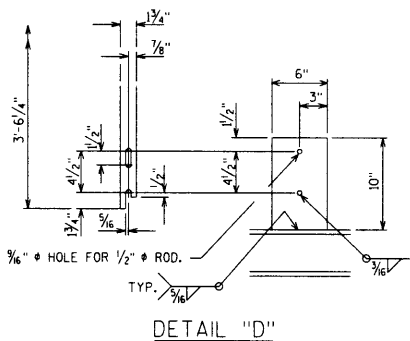
S-18-8



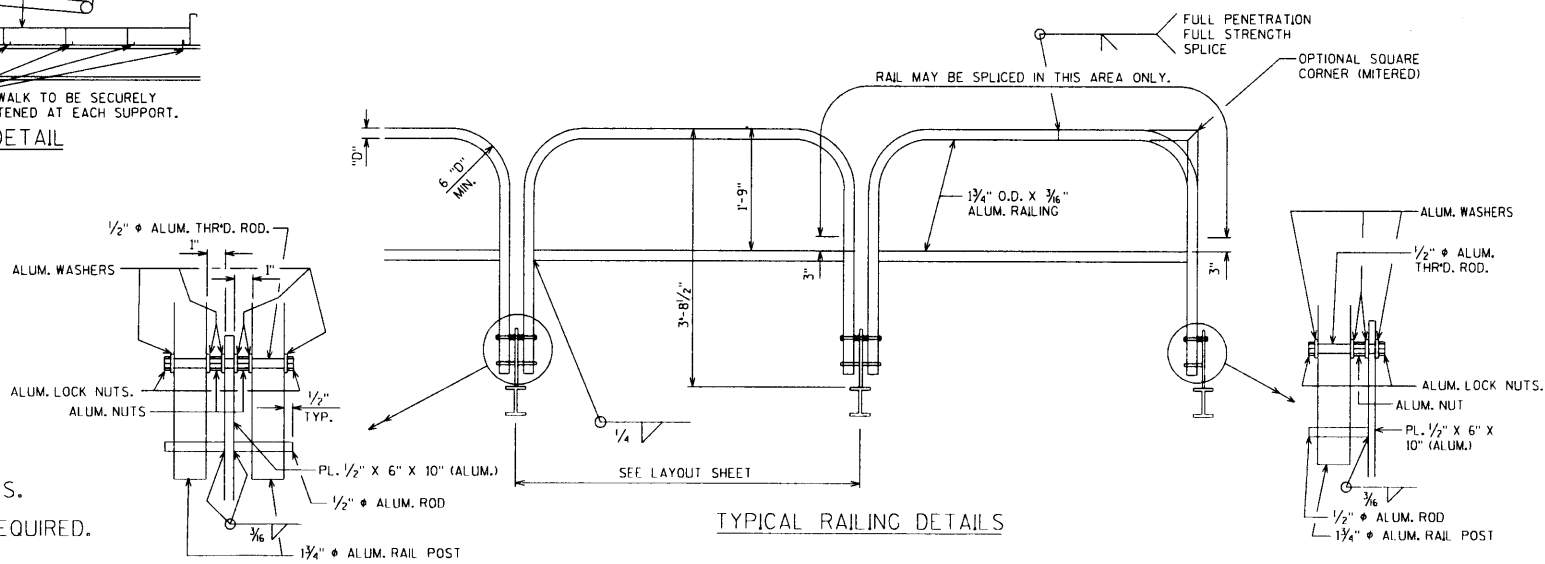
SAFETY CHAIN DETAIL



RAIL POST DETAIL



DETAIL "D"



TYPICAL RAILING DETAILS

CONSTRUCTION NOTES

- CONTRACTOR SHALL VERIFY EXACT LOCATION OF ALL REPAIRS.
- CONTRACTOR SHALL FIELD VERIFY THE SIZE OF THE ITEM REQUIRED.
- ALL STAINLESS STEEL BOLTS, LOCK-WASHERS, AND NUTS SHALL CONFORM TO ASTM A276. ANY OF THE 300 SERIES WHICH HAVE A MINIMUM YIELD OF 40,000 PSI AND ELONGATION OF 15% FOR OVER 3/4" AND 12% FOR 3/4" AND UNDER SHALL BE USED.



NO.	DATE	REVISION	BY
STATE OF WISCONSIN DEPARTMENT OF TRANSPORTATION STRUCTURES DESIGN SECTION			
STRUCTURE			
CONST. SPEC.	2003	DRAWN BY	DDS
WALKWAY QUANTITIES, DETAIL DRAWING AND DETAILS		PLANS CK'D.	JTT
		SHEET 10 OF 15	
		DATE: DEC. 2003	

TABLE OF ESTIMATED QUANTITIES

SIGN BRIDGE NO.	REPAIR CRACKS IN TOWER SPV.0060.13 EACH	TIGHTEN POST CAP SPV.0060.14 EACH	R1 REPLACE ACCESS PLATE LATCH SPV.0060.01 EACH INCIDENTAL
S-18-5	5 - SEE DETAIL DRAWING		
S-18-27	3 - SEE DETAIL DRAWING		
S-18-44		1 - AT NORTHWEST POST	
S-18-53	1 - AT STIFFENER INSIDE BASE		1 - SEE DETAIL DRAWING
S-55-2	2 - SEE DETAIL DRAWING	1 - AT SOUTHWEST POST	

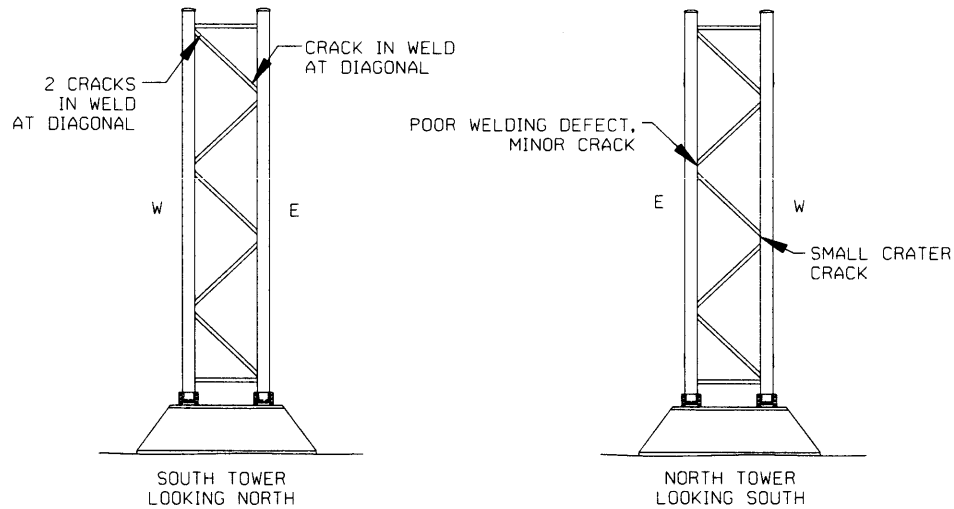


CONSTRUCTION NOTES

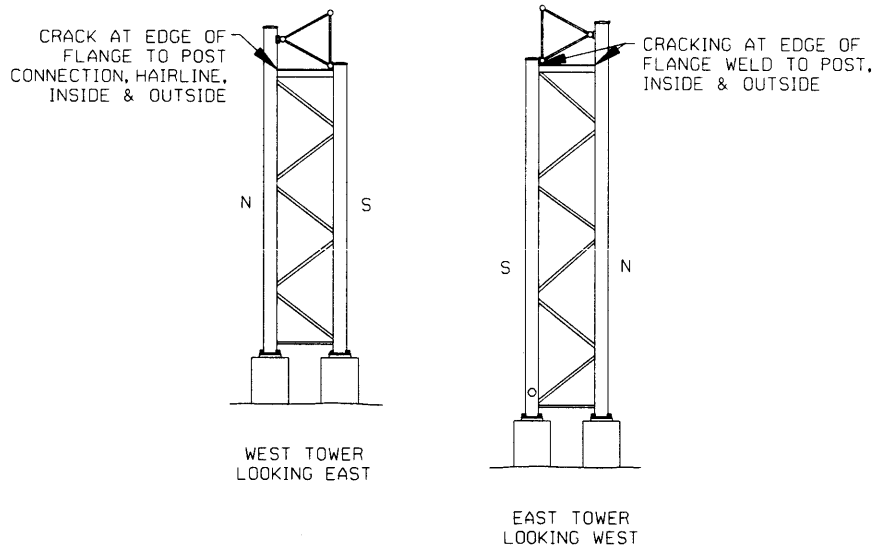
1. CONTRACTOR SHALL VERIFY EXACT LOCATION OF ALL REPAIRS.
2. CONTRACTOR SHALL FIELD VERIFY THE SIZE OF THE ITEM REQUIRED.
3. ALL STAINLESS STEEL BOLTS, LOCK-WASHERS, AND NUTS SHALL CONFORM TO ASTM A276. ANY OF THE 300 SERIES WHICH HAVE A MINIMUM YIELD OF 40,000 PSI AND ELONGATION OF 15% FOR OVER 3/4" AND 12% FOR 3/4" AND UNDER SHALL BE USED,

NO.	DATE	REVISION	BY
STATE OF WISCONSIN DEPARTMENT OF TRANSPORTATION STRUCTURES DESIGN SECTION			
STRUCTURE			
CONST. SPEC.	2003	DRAWN BY DDS	PLANS CK'D. JTT
TOWER QUANTITIES		SHEET 11 OF 15 DATE: DEC. 2003	

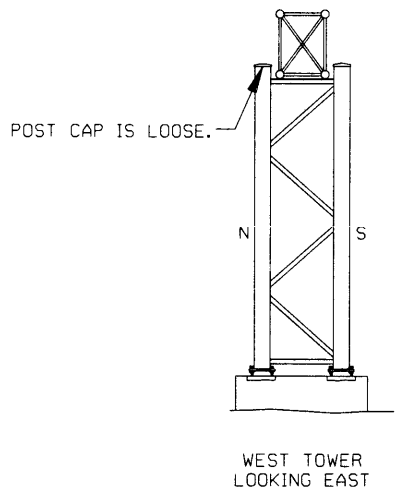
STATE PROJECT NUMBER	SHEET NO.
9227-00-67	



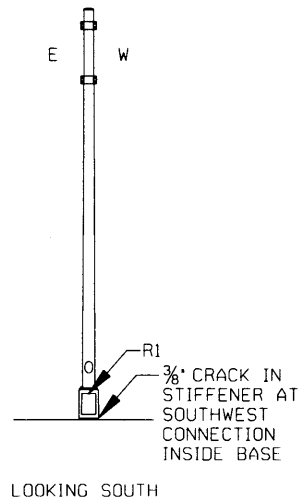
S-18-5



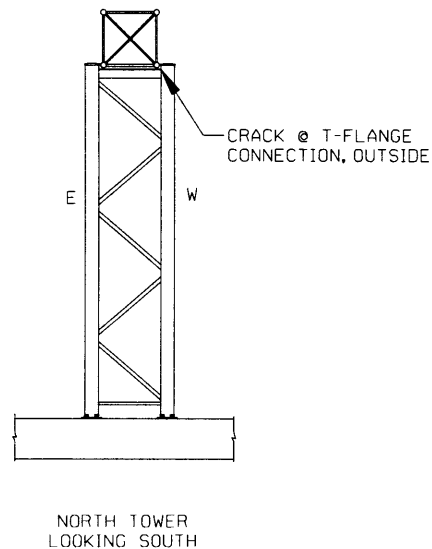
S-18-27



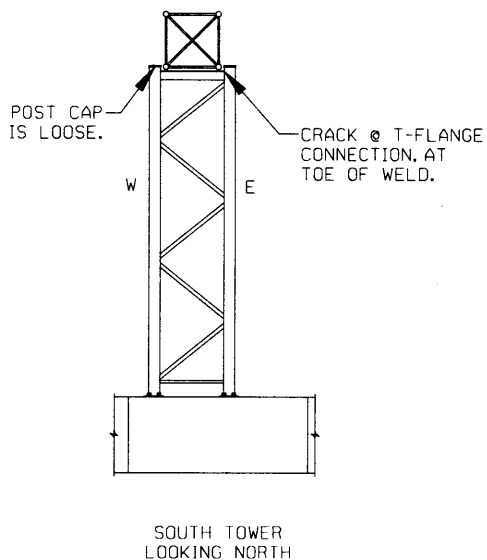
S-18-44



S-18-53



S-55-2



NOTES

R1 - REPLACE MISSING ACCESS PLATE LATCH.

ENGINEERS
PLANNERS
ECONOMISTS

Wilbur Smith Associates

NO.	DATE	REVISION	BY
STATE OF WISCONSIN DEPARTMENT OF TRANSPORTATION STRUCTURES DESIGN SECTION			
STRUCTURE			
CONST. SPEC.	2003	DRAWN BY DDS	PLANS CK'D. JT1
TOWER DETAIL DRAWINGS		SHEET 12 OF 15 DATE: DEC. 2003	

TABLE OF ESTIMATED QUANTITIES

SIGN BRIDGE NO.	REPAIR CRACKS IN TRUSS SPV.0060.15 EACH	REPAIR WELD SPV.0060.16 EACH	REPAIR/ REPLACE MEMBER SPV.0060.17 EACH	REPLACE MISSING BOLTS SPV.0060.18 EACH	T1 TIGHTEN LOOSE BOLTS SPV.0060.01 EACH INCIDENTAL	T2 TIGHTEN LOOSE NUTS IN FLANGE COUPLING SPV.0060.01 EACH INCIDENTAL
S-18-5	13 - SEE DETAIL DRAWING					
S-18-31		1 - RIGHT TOP WELD, SEE DETAIL DRAWING				
S-18-37					2 - SEE DETAIL DRAWING	
S-18-53	1 - SEE DETAIL DRAWING					
S-18-54	4 - SEE DETAIL DRAWING		1 - SEE DETAIL DRAWING			
S-55-2		1 - SEE DETAIL DRAWING	1 - SEE DETAIL DRAWING			
S-55-14						1 - SEE DETAIL DRAWING
S-55-26				2 - SEE DETAIL DRAWING		

CONSTRUCTION NOTES

1. CONTRACTOR SHALL VERIFY EXACT LOCATION OF ALL REPAIRS.
2. CONTRACTOR SHALL FIELD VERIFY THE SIZE OF THE ITEM REQUIRED.
3. ALL STAINLESS STEEL BOLTS, LOCK-WASHERS, AND NUTS SHALL CONFORM TO ASTM A276. ANY OF THE 300 SERIES WHICH HAVE A MINIMUM YIELD OF 40,000 PSI AND ELONGATION OF 15% FOR OVER 3/4" AND 12% FOR 3/4" AND UNDER SHALL BE USED,

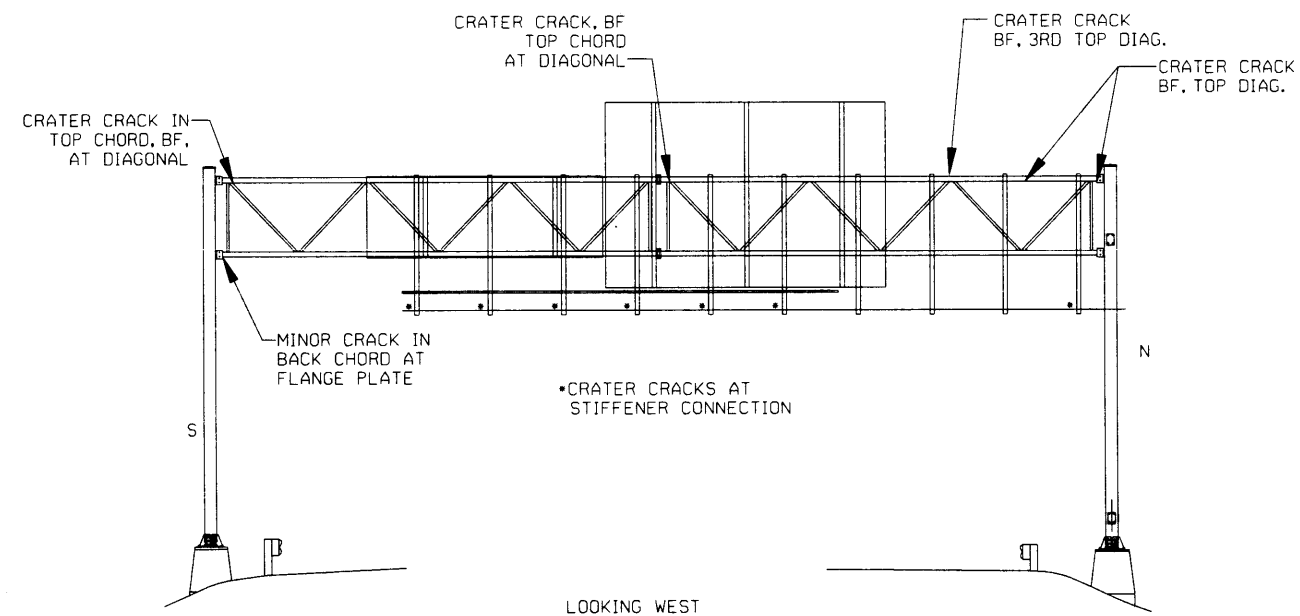


NO.		DATE		REVISION		BY	
STATE OF WISCONSIN DEPARTMENT OF TRANSPORTATION STRUCTURES DESIGN SECTION							
STRUCTURE							
CONST. SPEC.	2003	DRAWN BY	DDS	PLANS CK'D.	JTT		
TRUSS QUANTITIES						SHEET 13 OF 15	
						DATE: DEC. 2003	

STATE PROJECT NUMBER

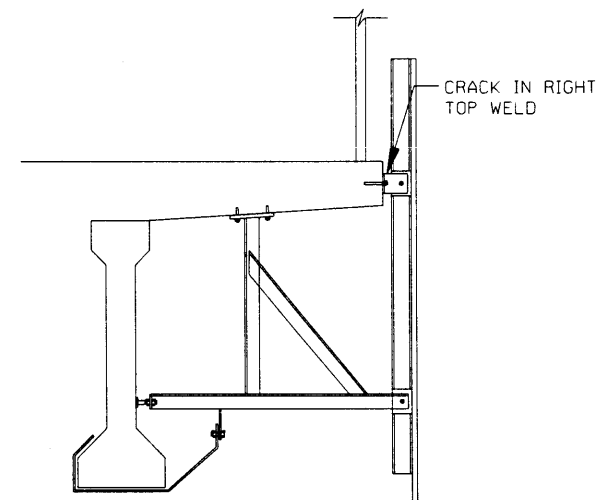
SHEET NO.

9227-00-67



LOOKING WEST

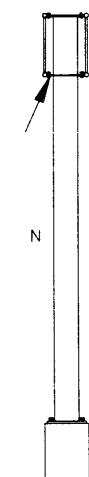
S-18-5



S-18-31

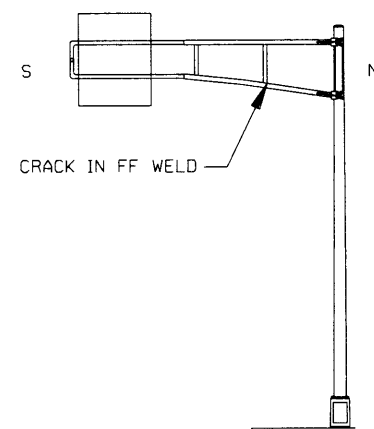
LOOKING EAST

T1 - TWO EASTERN BOLTS
IN NORTH BOTTOM CHORD
CONNECTION ARE LOOSE.



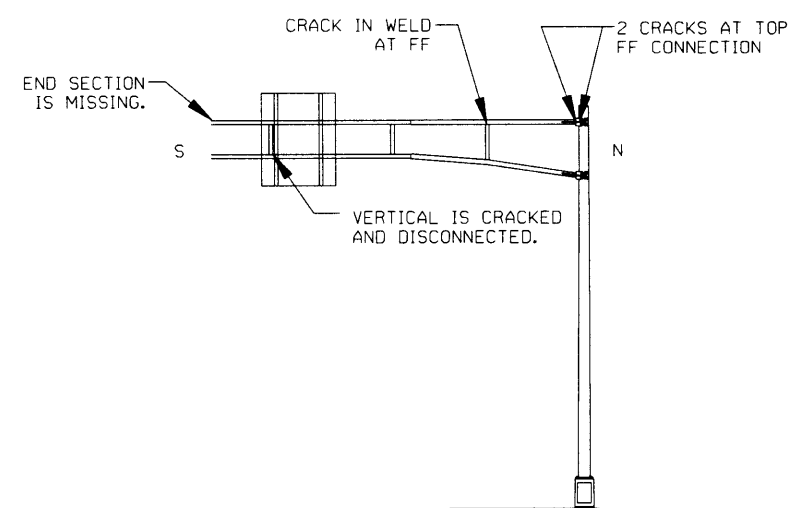
LOOKING EAST

S-18-37



LOOKING WEST

S-18-53



LOOKING WEST

S-18-54

NOTES

T1 - TIGHTEN LOOSE BOLTS.

T2 - TIGHTEN LOOSE NUTS IN FLANGE COUPLING.



ENGINEERS
PLANNERS
ECONOMISTS

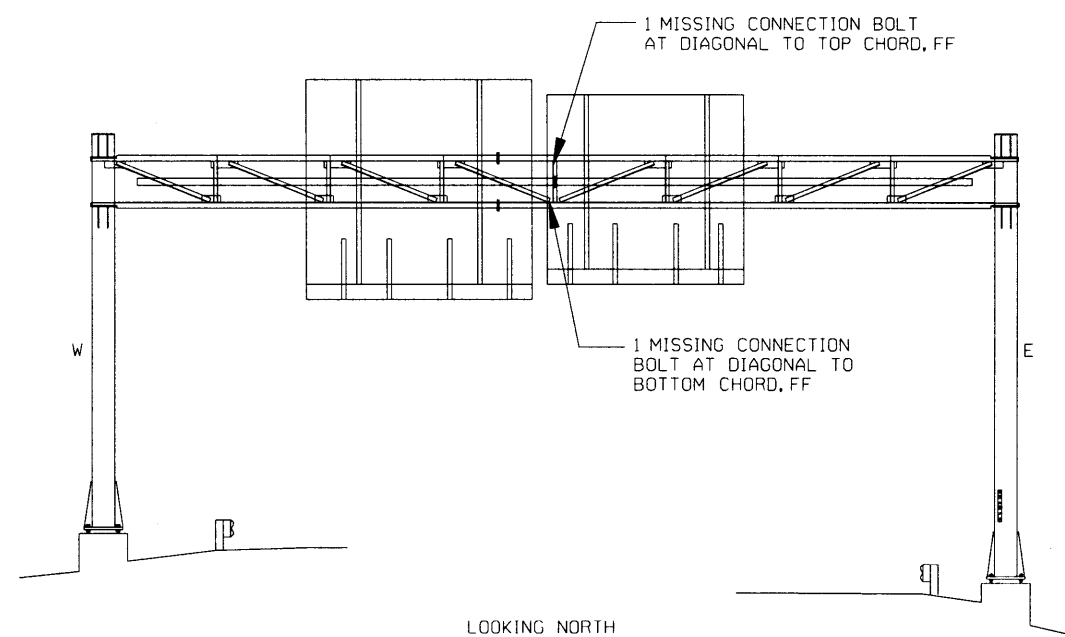
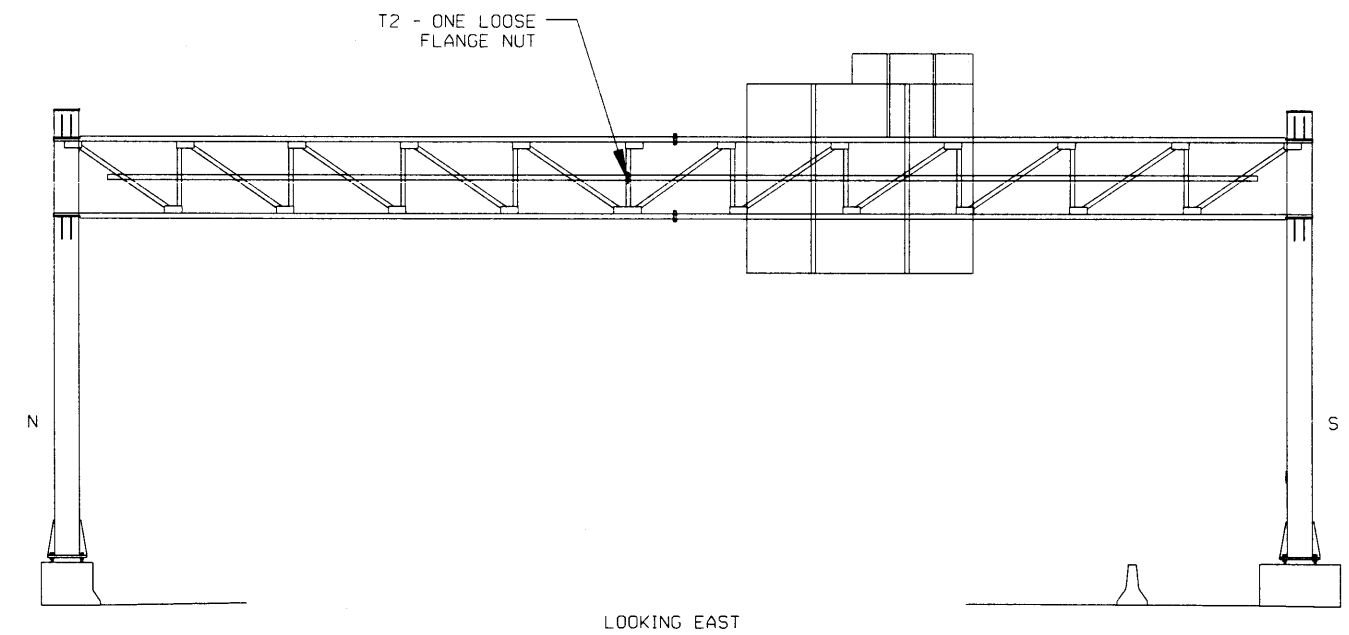
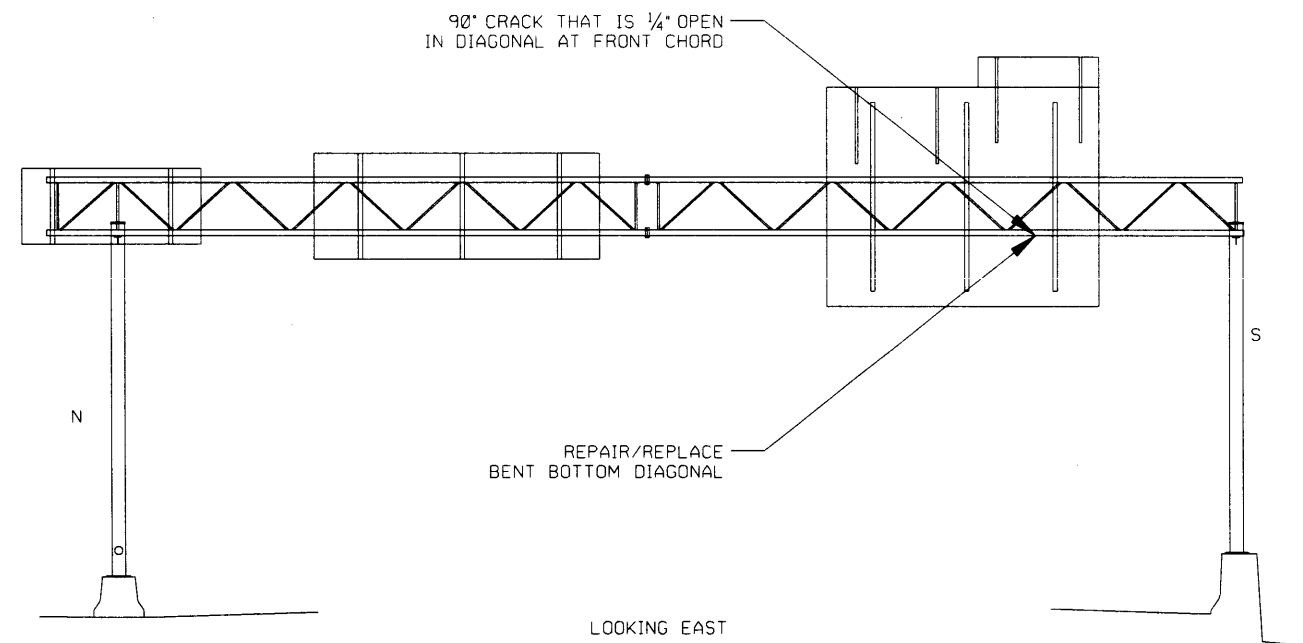
Wilbur Smith Associates

NO.	DATE	REVISION	BY
STATE OF WISCONSIN DEPARTMENT OF TRANSPORTATION STRUCTURES DESIGN SECTION			
STRUCTURE			
CONST. SPEC.	2003	DRAWN BY	DDJ
TRUSS DETAIL DRAWINGS		PLANS CK'D.	JTT
		SHEET 14 OF 15	
		DATE: DEC. 2003	

I.D.

16

FILE =
SCALE =



NOTES

T1 - TIGHTEN LOOSE BOLTS.

T2 - TIGHTEN LOOSE NUTS IN FLANGE COUPLING.

ENGINEERS
PLANNERS
ECONOMISTS

Wilbur Smith Associates

NO.	DATE	REVISION	BY
STATE OF WISCONSIN DEPARTMENT OF TRANSPORTATION STRUCTURES DESIGN SECTION			
STRUCTURE			
CONST. SPEC.	2003	DRAWN BY	PLANS CK'D.
TRUSS DETAIL DRAWINGS		DDS	JTT
		SHEET 15 OF 15	
		DATE: DEC. 2003	