

10/2/00

9227-00-23

(9227-00-22)

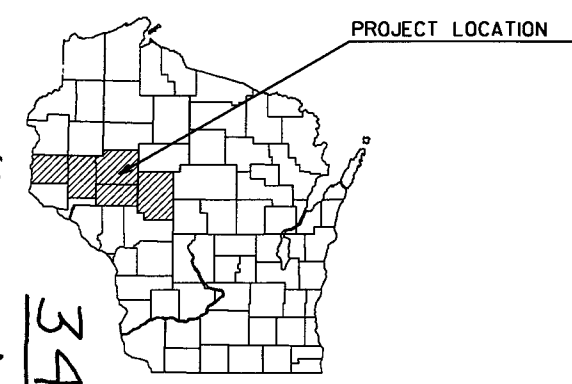
Various Counties

15-D

INDEX OF SHEETS

Sheet No. 1	Title
Sheet No. 2.1	Typical Sections and Details
Sheet No. 3.1	Estimate of Quantities
Sheet No. 3A-3C	Miscellaneous Quantities
Sheet No. _____	Right of Way Plat
Sheet No. _____	Plan and Profile
Sheet No. 6.1-6.9	Standard Detail Drawings
Sheet No. 7.1-7.2	Sign Plates
Sheet No. 8.1-8.12	Structure Plans
Sheet No. _____	Computer Earthwork Data
Sheet No. _____	Cross Sections

TOTAL SHEETS = 29



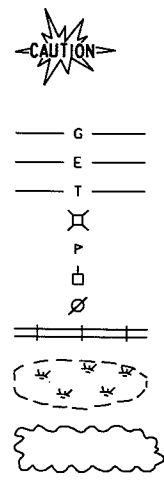
DESIGN DESIGNATION

A.D.T. (19)	=
A.D.T. (20)	=
D.H.V. (20)	=
D.	=
T.	=
DESIGN SPEED	=
ESALS	=

CONVENTIONAL SIGNS

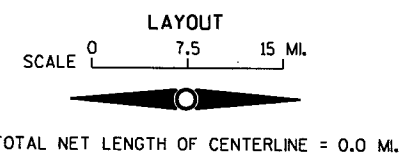
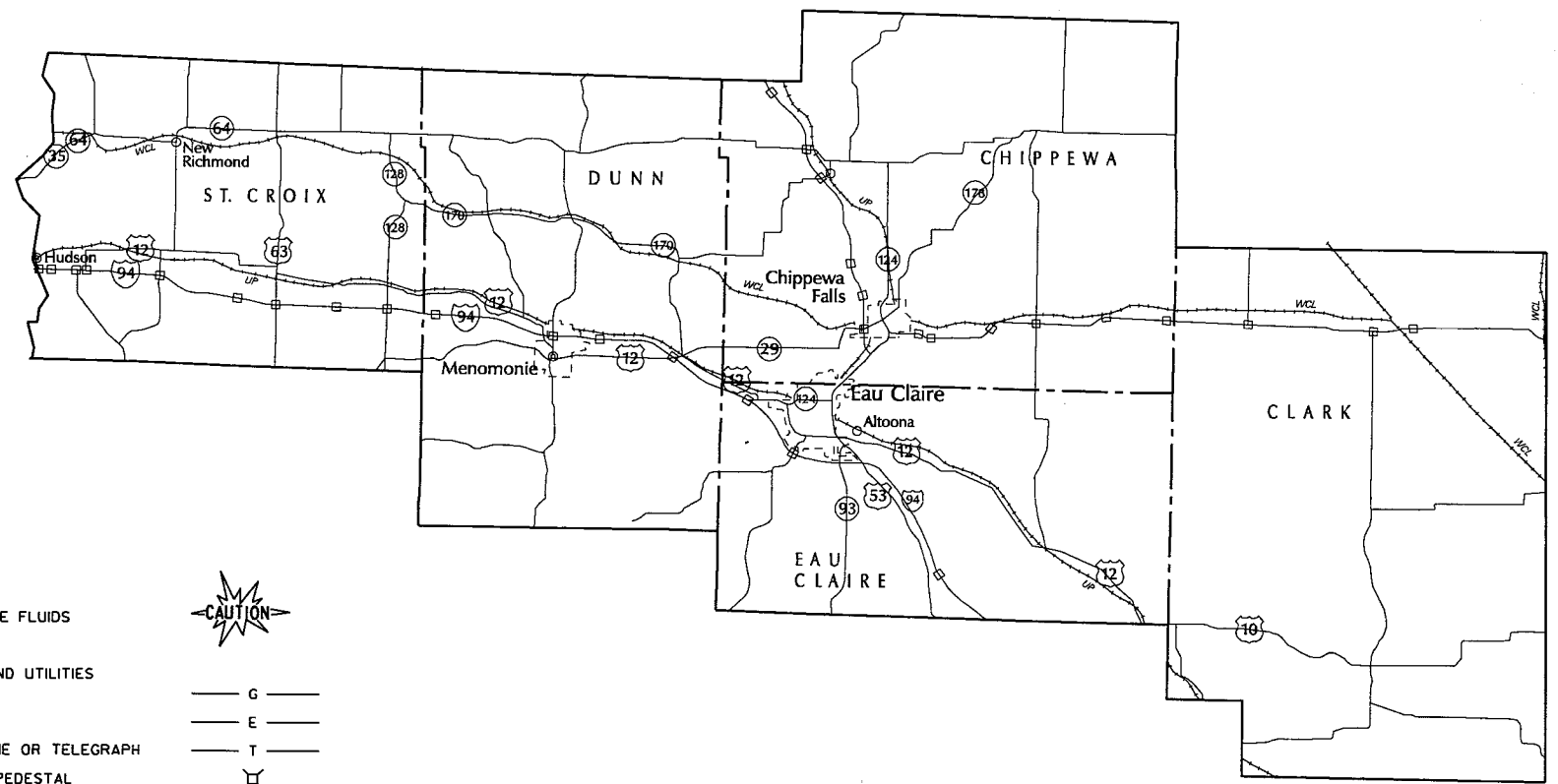
COUNTY LINE	---
CORPORATE LIMITS	---
PROPERTY LINE	---
LOT LINE	---
LIMITED EASEMENT	---
EXISTING RIGHT OF WAY	---
PROPOSED OR NEW R/W LINE	---
SURVEY LINE	---
SLOPE INTERCEPT	---
ORIGINAL GROUND	---
MARSH OR ROCK PROFILE	---
EXISTING CULVERT	---
PROPOSED CULVERT (Box or Pipe)	---
CULVERT (Profile View)	---

COMBUSTIBLE FLUIDS	---
UNDERGROUND UTILITIES	---
GAS	---
ELECTRIC	---
TELEPHONE OR TELEGRAPH	---
SERVICE PEDESTAL	---
CABLE MARKER	---
POWER POLE	---
TELEPHONE POLE	---
RAILROAD	---
MARSH AREA	---
WOODED OR SHRUB AREA	---



STATE OF WISCONSIN DEPARTMENT OF TRANSPORTATION PLAN OF PROPOSED IMPROVEMENT SIGN BRIDGE REHABILITATION VARIOUS COUNTIES DISTRICT 6

STATE PROJECT NUMBER
9227-00-23



STATE PROJECT	FEDERAL PROJECT	
	PROJECT	CONTRACT
9227-00-23	---	---

ORIGINAL PLANS PREPARED BY

Edwards AND Kelcey

Planning-Design
Construction
One Corporate Center
7401 Metro Blvd., Suite 430
Minneapolis, MN 55439

WISCONSIN

BRUCE A. PETERSON

E-31638

MINNEAPOLIS, MN

PROFESSIONAL ENGINEER

DATE: 9/18/00

STATE OF WISCONSIN
DEPARTMENT OF TRANSPORTATION

PREPARED BY

Surveyor _____

Designer _____

District Examiner Scott Ives

District Supervisor Pat Kern

Proj. Dev. Engineer Mike Ostrowski

C.O. Examiner M. BANASZAK

APPROVED FOR DISTRICT OFFICE

DATE: 9/20/00 [Signature]

(Signature)

SIGN BRIDGE NUMBER	HIGHWAY	DIRECTION OF TRAVEL	LOCATION
S - 9 - 1	USH 53	SB	US Hwy 53 SB to STH 124 Interchange
S - 9 - 2	USH 53/STH 124	NB	US Hwy 53 NB @ Ramp to STH 124
S - 9 - 3	STH 29	WB	STH 29 WB @ JCT STH 124
S - 9 - 4	USH 53/STH 124	NB	US Hwy 53 NB, 500' N of City "00"
S - 9 - 6	STH 29/STH 124	EB	STH 29 EB/124 SB, South of Summit
S - 9 - 7	STH 29	EB	STH 29 @ US Hwy 29 on Bridge B-9-50
S - 9 - 9	USH 53	NB	US Hwy 53 NB/State Hwy 124, 1500' south of County Hwy 00
S - 10 - 1	US Hwy 10	EB	US Hwy 10 @ County Hwy K@ Granton
S - 17 - 4	I 94	EB	I-94 EB 1/2 mi E of STH 25, on bridge B-17-40

STATE PROJECT NUMBER	SHEET NO.
9227-00-23	8.1
VARIOUS INTERSTATE AND NON-INTERSTATE SIGN STRUCTURES	

GENERAL NOTES

DRAWINGS SHALL NOT BE SCALED.

ALL DIMENSIONS BASED ON AS BUILT PLANS AND FIELD INSPECTIONS.
THE CONTRACTOR SHALL VERIFY ALL DIMENSIONS PRIOR TO
FABRICATION OF MEMBERS.

FIELD INSPECTION REPORTS FROM WHICH THE REPAIR PLANS WERE
CREATED ARE AVAILABLE FOR INSPECTION ANDCOPYING AT THE
DISTRICT 6 OFFICE.

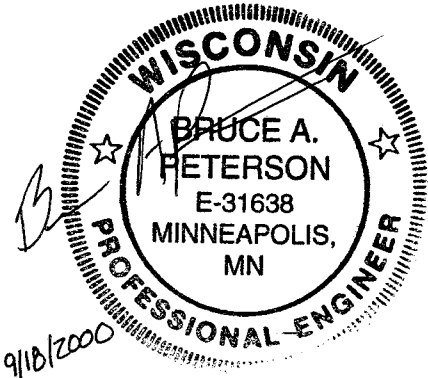
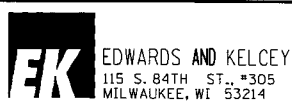
NUMBER	COUNTY
9	CHIPPEWA
10	CLARK
17	DUNN
18	EAU CLAIRE
55	ST CROIX

LIST OF DRAWINGS

- 1-3 SIGN STRUCTURE LOCATIONS
4 WALKWAY REPAIRS
5 FOUNDATION REPAIRS
6-11SIGN BRIDGE REPAIRS
12 SIGNING REPAIRS

BRIDGE OFFICE CONTACT:
GERALD ANDERSON
(608) 266-8488

CONSULTANT CONTACT:
BRUCE PETERSON
(952) 835-6411



NO.	DATE	REVISION		BY	
STATE OF WISCONSIN DEPARTMENT OF TRANSPORTATION DIVISION OF HIGHWAYS					
STRUCTURE					
COUNTY		VARIOUS		TOWN	
VARIOUS		VARIOUS			
DESIGN SPEC.		1996		LOAD	
				CONST. SPEC.	
DESIGNED BY		DRS		DESIGN CK'D.	
BAP		DRAWN BY		S.J.L.	
		PLANS CK'D.		BAP	
APPROVED: <i>[Signature]</i>				11-19-00	
CHIEF BRIDGE DESIGN ENGINEER				DATE	
SIGN STRUCTURE LOCATIONS				SHEET 1	

SIGN BRIDGE NUMBER	HIGHWAY	DIRECTION OF TRAVEL	LOCATION
S - 18 - 2	I-94	WB	I 94 WB C/D @ exit to USH 53 SB
S - 18 - 4	I-94	WB	I 94 WB 300' East of C/D Gore to US Hwy 53
S - 18 - 5	I-94	WB	I 94 WB C/D 200' E of Gore to US Hwy 53 NB/SB
S - 18 - 6	I-94	EB	I 94 EB C/D @ gore split to US Hwy 53 SB/NB
S - 18 - 8	I-94	EB	US Hwy 53 SB @ exit to I-94 EB
S - 18 - 9	I-94	EB	I 94 EB C/D to State Hwy 53 NB
S - 18 - 11	USH 53	NB	500' S of US Hwy 53 NB exit to Birch St /County Q
S - 18 - 12	USH 12	WB	US Hwy 12 WB/Clairemont Ave 50' East of US Hwy 53
S - 18 - 13	USH 12	EB	US Hwy 12, 50' West of US Hwy 53
S - 18 - 14	USH 12	EB	US Hwy 12 EB, 500' West of US Hwy 53 SB exit
S - 18 - 15	USH 12	EB	US Hwy 12 EB @ London Rd
S - 18 - 17	STH 37	NB	STH 37 NB, mounted on bridge B-18-25 (I-94 EB)
S - 18 - 18	STH 37	SB	STH 37 SB, mounted on bridge B-18-26 (I-94 WB)
S - 18 - 19	STH 37	SB	STH 37 SB, 800' north of I-94 WB
S - 18 - 21	USH 53	SB	US Hwy 53 SB 1200' S of County of AA
S - 18 - 22	USH 53	SB	US Hwy 53 SB @ Golf Road/County AA on Bridge B-18-99
S - 18 - 23	USH 53	NB	US Hwy 53 NB 3000' North of I 94
S - 18 - 24	USH 53	SB	US Hwy 53 SB, .4 mi South of Golf Rd/County AA
S - 18 - 25	USH 53	SB	US Hwy 53 SB 1/4 mi N of I 94; .68 mi S of Golf Rd/ County AA
S - 18 - 26	USH 53	SB	US Hwy 53 SB, 900' N. of State Hwy 93
S - 18 - 27	USH 53	NB	US Hwy 53 NB, .2 mi North of State Hwy 93
S - 18 - 28	USH 53	NB	US Hwy 53 SB 500' N of Birch St/County Q
S - 18 - 31	STH 124	NB	STH 124 NB @ Star Ave on Bridge B-18-133
S - 18 - 32	STH 124	NB	STH 124 NB .1 mi W of US Hwy 53
S - 18 - 33	STH 124	NB	STH 124 NB @ US Hwy 53 on Bridge B-18-137
S - 18 - 34	USH 53	NB	US Hwy 53 NB .2 mi South of STH 124
S - 18 - 35	USH 53	SB	US Hwy 53 SB .25 mi North of STH 124
S - 18 - 36	STH 124	NB	STH 124 NB .2 mi West of Clairemont Ave./ US Hwy 12
S - 18 - 37	STH 124	SB	STH 124 SB .2 mi East of US Hwy 12/ Clairemont Ave
S - 18 - 38	USH 53	SB	US Hwy 53 SB .42 mi North of TH 124
S - 18 - 39	USH 53	NB	US Hwy 53 NB .1 mi South of Eddy Lane
S - 18 - 40	USH 53	NB	US Hwy 53 NB .22 mi South of Eddy Lane
S - 18 - 41	STH 124	SB	STH 124 SB .2 mi East I 94
S - 18 - 42	USH 53	SB	US Hwy 53 SB @ Ramp to Clairemont Ave
S - 18 - 43	USH 53	SB	US Hwy 53 SB @ Gore to Clairemont Ave EB and WB
S - 18 - 44	USH 53	SB/NB	US Hwy 53 S. Kirk over all lanes
S - 18 - 45	USH 53	SB/NB	US Hwy 53 SB/NB South of Brackett
S - 18 - 46	USH 53	SB	US Hwy 53 .25 mi N of Eddy Lane
S - 18 - 47	USH 53	NB	US Hwy 12 Clairemont Ave/ US Hwy 53 Intersection
S - 18 - 49	USH 53	SB	US Hwy 53 SB, 300' N. of Highland Ave.
S - 18 - 50	I-94	WB	I-94 WB 1000' W. of US Hwy 53

STATE PROJECT NUMBER	SHEET NO.
9227-00-23	8.2
VARIOUS INTERSTATE AND NON-INTERSTATE SIGN STRUCTURES	

NO.	DATE	REVISION	BY
STATE OF WISCONSIN DEPARTMENT OF TRANSPORTATION DIVISION OF HIGHWAYS			
STRUCTURE			
CONST. SPEC.	1996	DRAWN BY	PLANS CK'D.
SIGN STRUCTURE LOCATIONS			SHEET 2

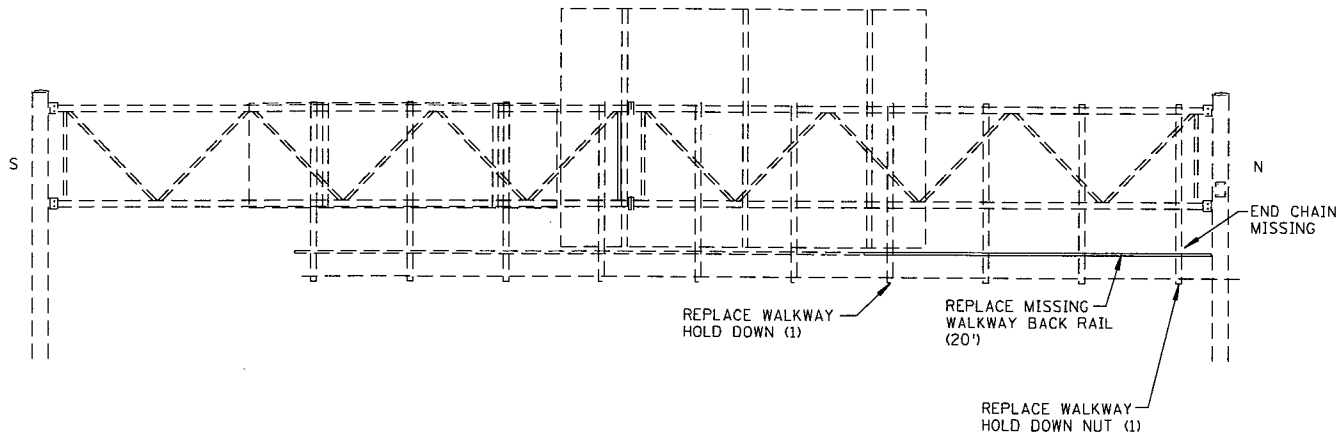
SIGN BRIDGE NUMBER	HIGHWAY	DIRECTION OF TRAVEL	LOCATION
S - 55 - 2	I-94	EB	I-94 EB .43 mi East of 11th St Bridge, Bridge S-55-2
S - 55 - 6	I-94	WB	I-94 WB 1/2 mi West of Carmichael Rd
S - 55 - 7	I-94	WB	I-94 WB @ 11th St in Hudson on Bridge B-55-25
S - 55 - 9	I-94	EB	I-94 EB @ Exit to Carmichel Rd.
S - 55 - 11	I-94	EB	I 94 EB .5 mi E of exit 1 (mp 1.047 from Bridge)
S - 55 - 12	I-94	EB	I 94 EB @ exit to Carmichael Rd (mp 1.884 from Bridge)
S - 55 - 14	I-94	EB	I-94 EB Advance for STH 35 North (on St. Croix River Bridge)
S - 55 - 15	I-94	EB	I-94 EB @ Exit to STH 35 NB (.1 mi E of St Croix Br)
S - 55 - 16	I-94	WB	I-94 WB, Exit to STH 35 NB
S - 55 - 17	I-94	WB	I-94 WB, Advance for Minn 95
S - 55 - 18	I-94	WB	I-94 WB @ Exit to STH 35 NB
S - 55 - 19	IH 94	EB	.45 mi. W. of STH 35 S (sta. 122+00)
S - 55 - 20	IH 94	EB	.25 mi.W. OF STH 35 S.(sta.132 + 29)
S - 55 - 21	IH 94	WB	.10 mi.W.OF STH 35 S.(sta.140 + 31)
S - 55 - 22	IH 94	EB	.50 mi. W. OF USH 12/CTH U(sta.157 + 00)
S - 55 - 23	IH 94	WB	.36 mi. E. OF STH 35 S.(sta.164 + 00)
S - 55 - 24	IH 94	EB	.20 mi. W OF USH12/CTH U(sta.172 + 38)
S - 55 - 25	STH 35	NB	.50 mi. S. OF IH 94(sta.594 + 50)
S - 55 - 26	STH 35	NB	.25 mi. S. OF IH 94(sta.609 + 29)
S - 55 - 27	IH94	EB	On B-55-151 USH12/CTH U
S - 55 - 28	IH94	EB	.53 mi E of USH 12/CTH U(sta.211 + 00)
S - 55 - 29	COUNTY F	NB	Carmichael Rd / F over I-94

STATE PROJECT NUMBER	SHEET NO.
9227-00-23	8.3
VARIOUS INTERSTATE AND NON-INTERSTATE SIGN STRUCTURES	

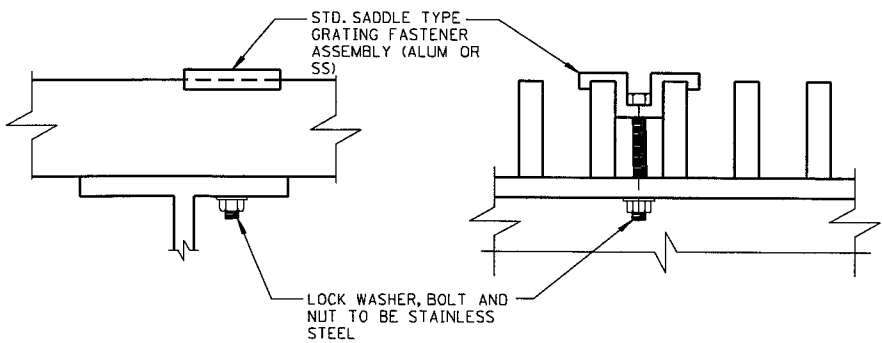
NO.	DATE	REVISION	BY
STATE OF WISCONSIN DEPARTMENT OF TRANSPORTATION DIVISION OF HIGHWAYS			
STRUCTURE			
CONST. SPEC.	1996	DRAWN BY SJL	PLANS CK'D. SJL
SIGN STRUCTURE LOCATIONS			SHEET 3

QUANTITIES FOR WALKWAY WORK				
SIGN BRIDGE	PLACE WALKWAY END CHAIN	PLACE MISSING WALKWAY BACK RAILING	REPLACE WALKWAY HOLD DOWN	INCIDENTAL REPAIRS
	(EA)	(LF)	(EA)	
S - 18 - 5	1	20	1	REPLACE 1 WALKWAY HOLD DOWN NUT, 1/4" Ø ①
S - 18 - 8	1			ATT. E. END CHAIN THRU SIGN PANEL; REP. 2 WKWY. HOLD DOWN NUT, 1/4" Ø ①
S - 18 - 12	2 ③			
S - 18 - 13	1			
S - 18 - 14			2	

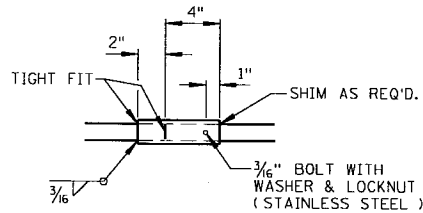
- ① ESTIMATED SIZE, SHOP DRAWINGS WERE NOT AVAILABLE. CONTRACTOR SHALL FIELD VERIFY THE SIZE OF ITEM REQUIRED.
② ESTIMATED LENGTH, SHOP DRAWINGS WERE NOT AVAILABLE. CONTRACTOR SHALL FIELD VERIFY THE LENGTH OF CHAIN REQUIRED.
③ ATTACH 1 CHAIN THROUGH SIGN PANEL.



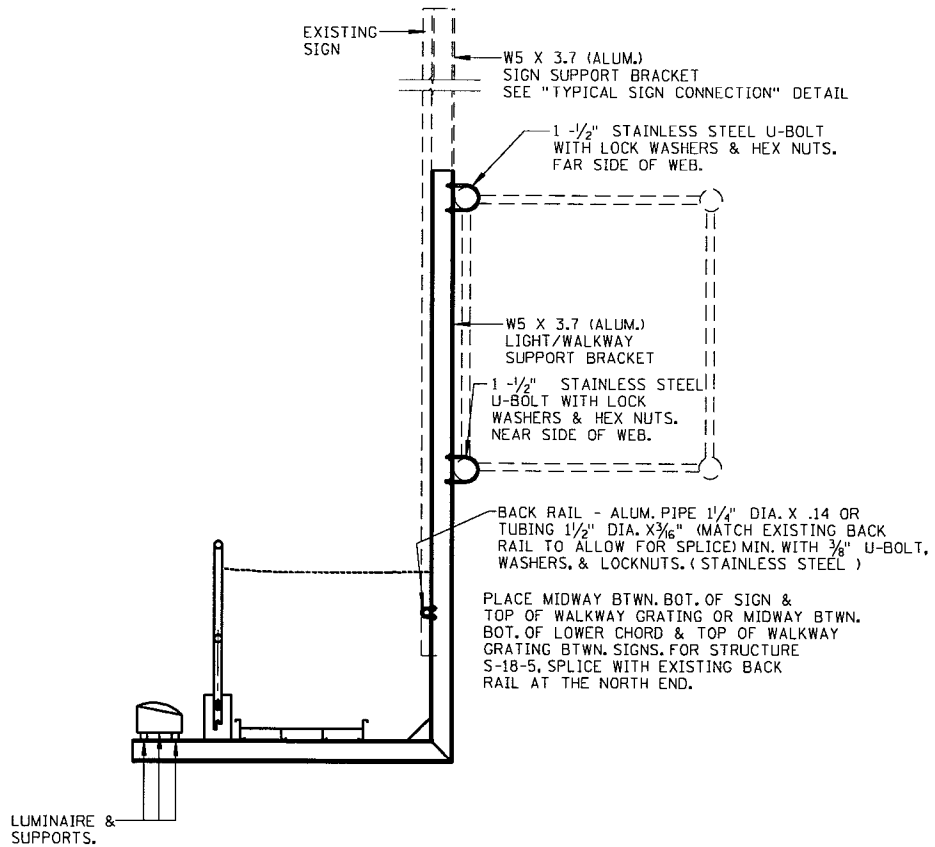
SIGN NO. S-18-5
(LOOKING WEST)



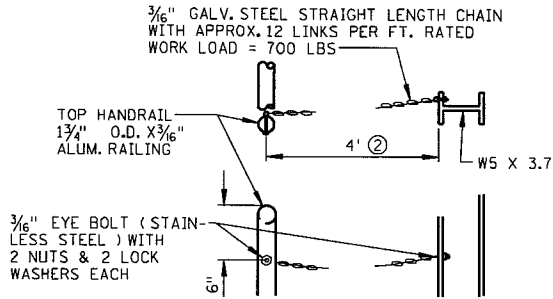
WALKWAY HOLD DOWN



BACKRAIL SPLICE
ONE SPLICE ALLOWED
FOR LENGTHS OVER 30'-0"



SECTION THRU WALKWAY
* WALKWAY GRATING HOLD DOWN
SHALL MATCH EXISTING

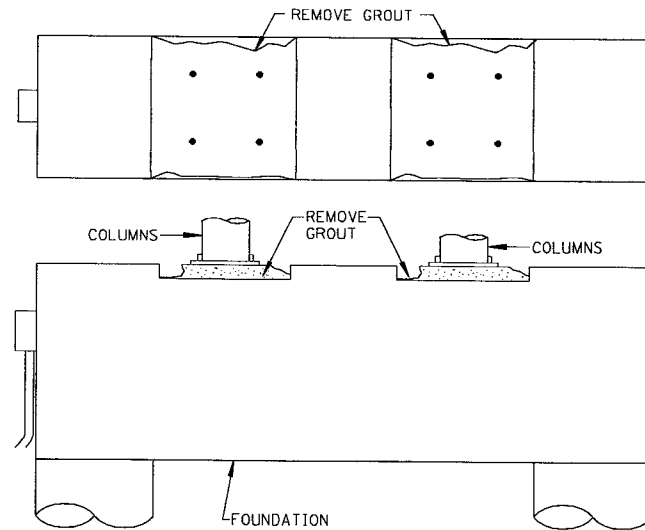
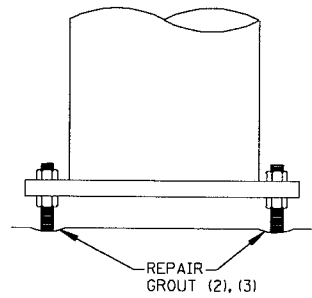


SAFETY CHAIN DETAIL

NO.	DATE	REVISION	BY
STATE OF WISCONSIN DEPARTMENT OF TRANSPORTATION DIVISION OF HIGHWAYS			
STRUCTURE			
CONST. SPEC.	1996	DRAWN BY	SJL
		PLANS CK'D.	DRS
WALKWAY WORK			SHEET 4

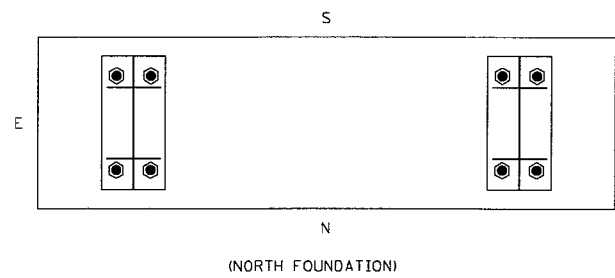
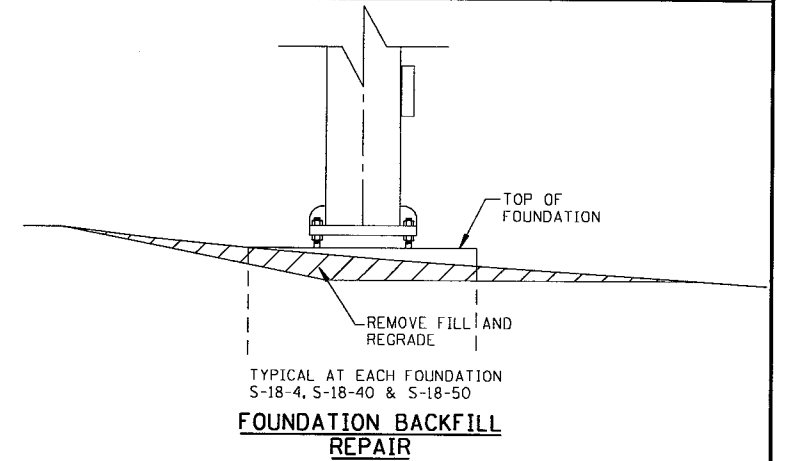
QUANTITIES FOR FOUNDATION WORK					
SIGN BRIDGE	TIGHTEN LOOSE ANCHOR BOLT NUTS	TRIM ANCHOR BOLT WASHERS	REMOVE GROUT	REPAIR GROUT	ADD OR REMOVE FILL AND REGRADE
	(EA)	(EA)	(EA)	(CY)	(CY)
S - 9 - 6			1 (1)		0.2
S - 18 - 4	3				
S - 18 - 6	1				
S - 18 - 9	3				
S - 18 - 32		16			
S - 18 - 34		16			
S - 18 - 35		16			
S - 18 - 36		16			
S - 18 - 40	1				0.5
S - 18 - 45				0.1 (2)	
S - 18 - 50					0.3
S - 55 - 14	2				
S - 55 - 16				0.1 (3)	

- (1) REMOVE GROUT ON EAST TOWER. SMOOTH SURFACE TO DRAIN WITH LOW SLUMP EPOXY GROUT.
 (2) EAST TOWER, SOUTH POST. FILL DEPRESSIONS NEAR ANCHOR BOLTS WITH GROUT TO PREVENT STANDING WATER.
 (3) FILL DEPRESSIONS NEAR ANCHOR BOLTS WITH GROUT TO PREVENT STANDING WATER.



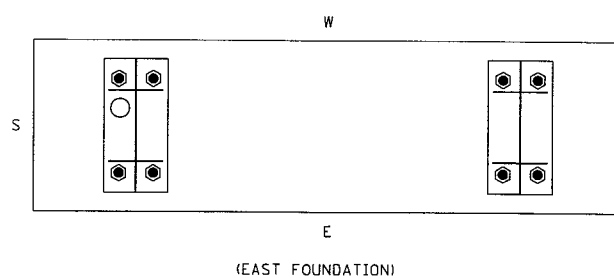
TYPICAL GROUT REPAIRS

STATE PROJECT NUMBER	SHEET NO.
9227-00-23	8.5
VARIOUS INTERSTATE AND NON-INTERSTATE SIGN STRUCTURES	



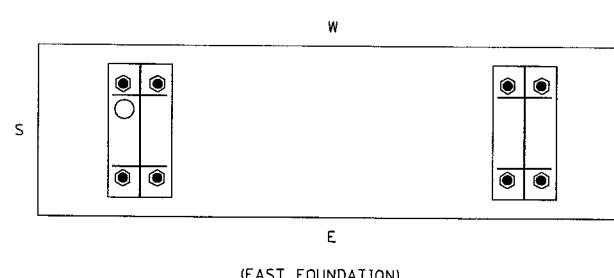
- TRIM WASHER AND TIGHTEN LOOSE ANCHOR BOLT

SIGN NO S-18-32



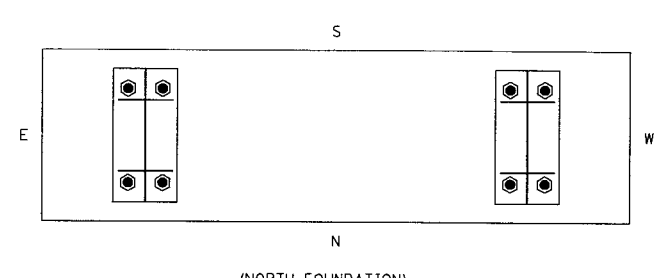
- TRIM WASHER AND TIGHTEN LOOSE ANCHOR BOLT

SIGN NO S-18-34



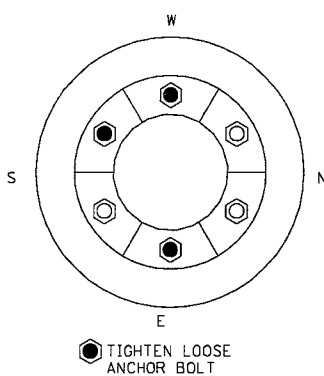
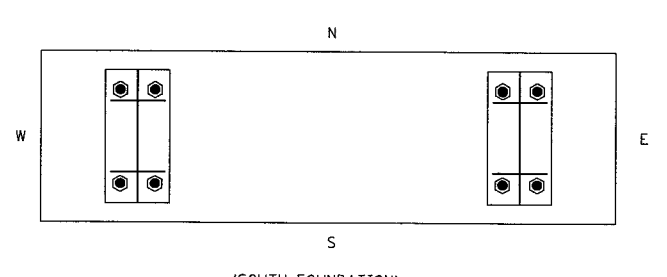
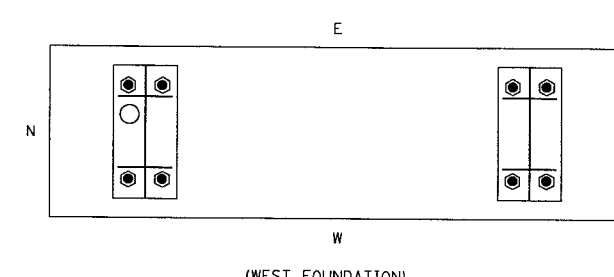
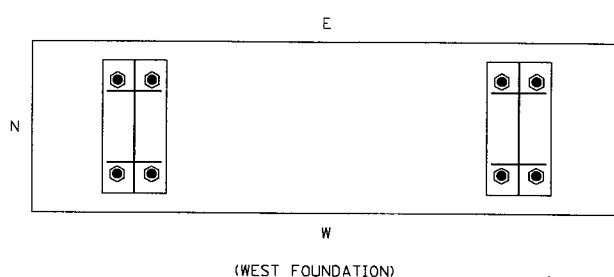
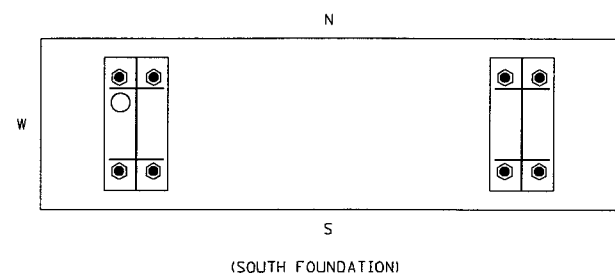
- TRIM WASHER AND TIGHTEN LOOSE ANCHOR BOLT

SIGN NO S-18-35

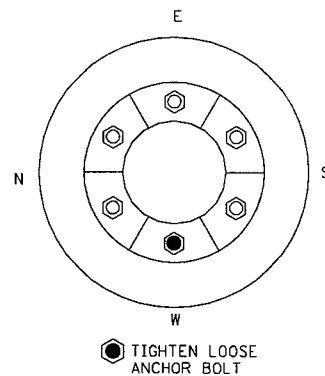


- TRIM WASHER AND TIGHTEN LOOSE ANCHOR BOLT

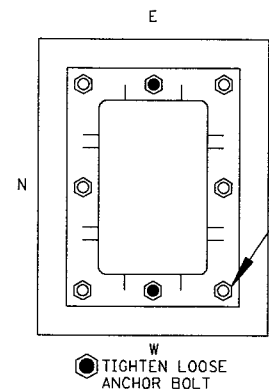
SIGN NO S-18-36



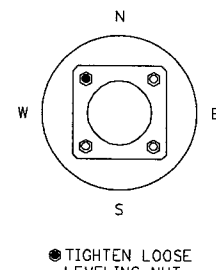
SIGN NO S-18-4
(NORTH FOUNDATION)



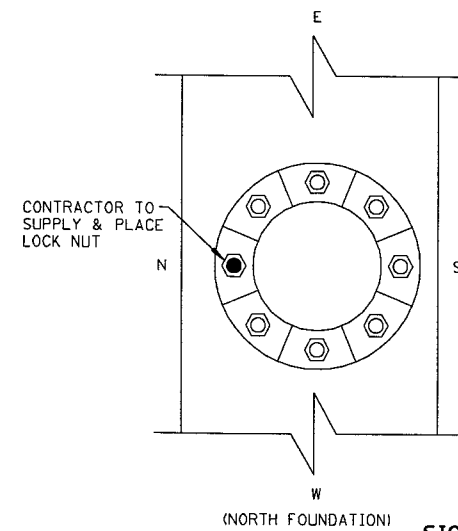
SIGN NO S-18-6
(SOUTH FOUNDATION)



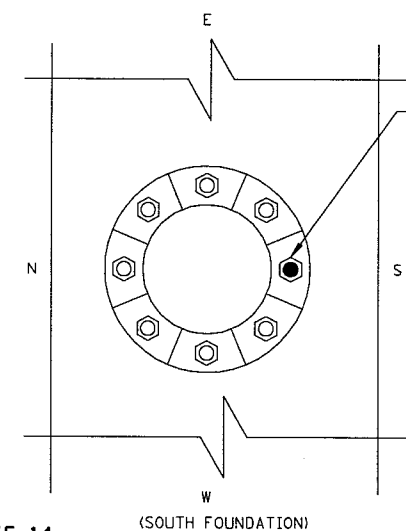
SIGN NO S-18-9



SIGN NO S-18-40



SIGN NO S-55-14



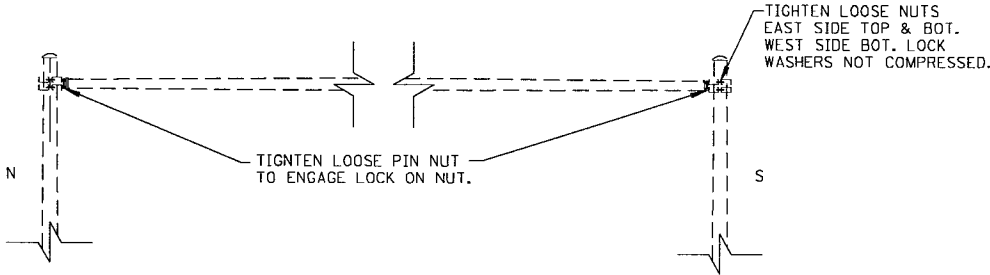
(SOUTH FOUNDATION)

NO.	DATE	REVISION	BY
STATE OF WISCONSIN DEPARTMENT OF TRANSPORTATION DIVISION OF HIGHWAYS			
STRUCTURE			
CONST. SPEC.	1996	DRAWN BY SJL	PLANS CK'D. DRS
FOUNDATION REPAIRS			SHEET 5

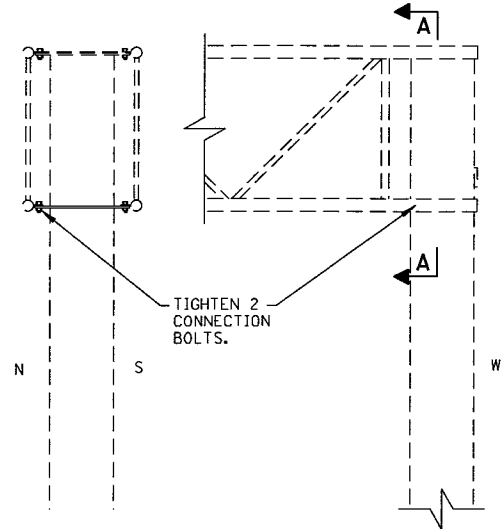
SUMMARY OF QUANTITIES FOR SIGN BRIDGE REPAIRS									
SIGN BRIDGE NUMBER	REMOVE & REPLACE COLUMN DIAGONAL OR STRUT	REMOVE & REPLACE TRUSS DIAGONAL OR STRUT	REPAIR WELD	"T" SECTION REPAIRS	REPLACE HAND HOLE COVER	REPLACE U-BOLT	INCIDENTAL REPAIRS	REMOVE & DISPOSE, SIGN BRIDGE (S-18-2)	SALVAGE SIGN PANEL (SIGN BRIDGE S-18-2)
	(EA)	(EA)	(EA)	(EA)	(EA)	(EA)	(EA)	(EA)	(EA)
S - 9 - 3	1	1					DRILL HOLES AT ENDS OF MAIN CHRD CRACK, 2		
S - 9 - 6	2	1	4						
S - 18 - 2								1	1
S - 18 - 5					1				
S - 18 - 6					4				
S - 18 - 8			2						
S - 18 - 9					1 ①		BLAST CLEAN & COAT REPAIRED CONN. W/ COLD GALV.		
S - 18 - 13					1 ①				
S - 18 - 14		4							
S - 18 - 15			1						
S - 18 - 19							TIGHTEN LOOSE BOLTS		
S - 18 - 21					2				
S - 18 - 23					2				
S - 18 - 24	2				2				
S - 18 - 25	1				2				
S - 18 - 27				2		2			
S - 18 - 37							TIGHTEN LOOSE BOLTS, 2		
S - 18 - 38		2							
S - 18 - 41	1		1	1					
S - 55 - 2				2					
S - 55 - 6							DRILL HOLE @ CRACK, 3		
S - 55 - 9							TIGHTEN LOOSE NUTS, 5		
S - 55 - 15					1				
S - 55 - 16			1						
S - 55 - 18			1						

① NO HANDHOLE COVER REQUIRED. PLACE SCREWS AS NOTED IN "QUANTITIES FOR REPLACE HANDHOLE COVER", SHEET 9

STATE PROJECT NUMBER	SHEET NO.
9227-00-23	8.6
VARIOUS INTERSTATE AND NON-INTERSTATE SIGN STRUCTURES	

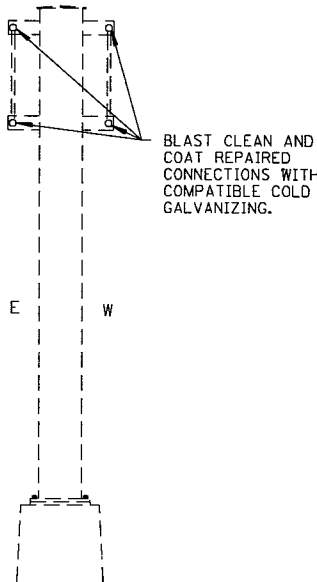


SIGN NO. S-55-9
LOOKING EAST

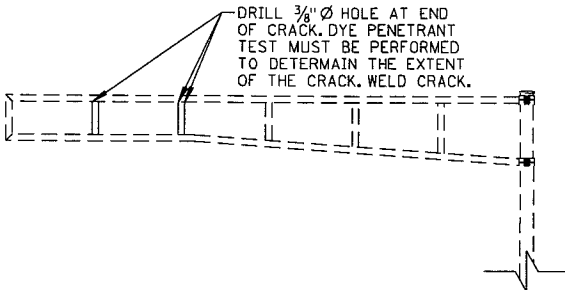


SECTION A-A

SIGN NO. S-18-37
LOOKING SOUTH



SIGN NO. S-18-9
LOOKING SOUTH

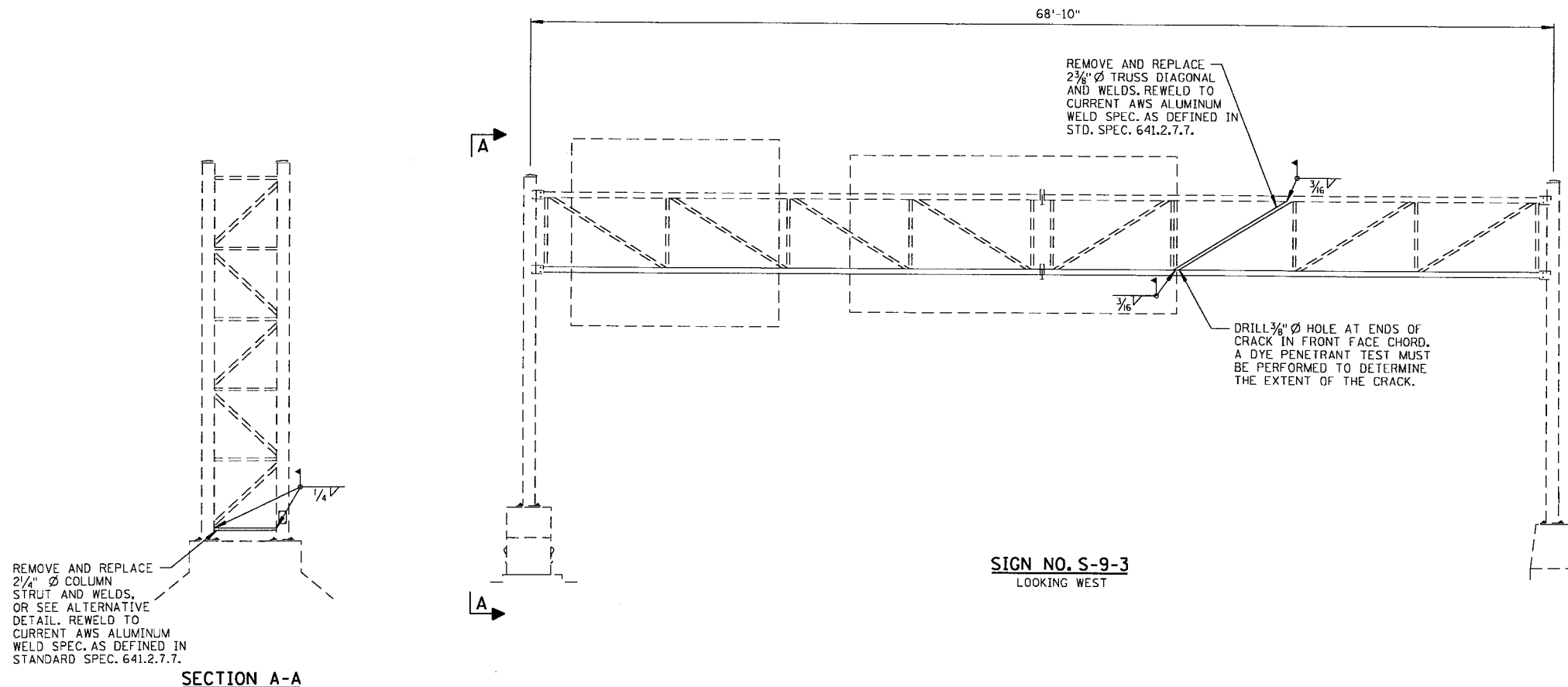


SIGN N. S-55-6
LOOKING WEST

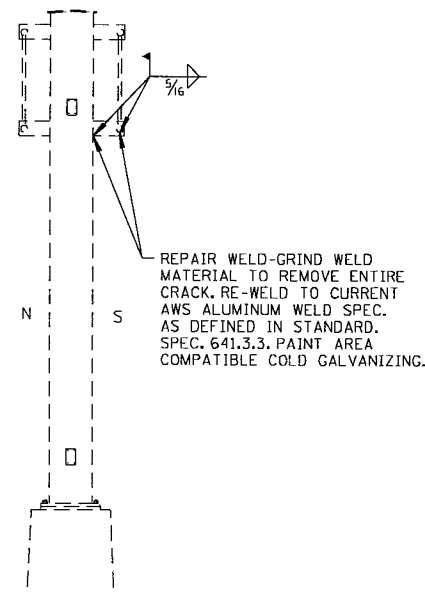
- SIGN BRIDGE REPAIR NOTES:
1. CONTRACTOR SHALL VERIFY EXACT LOCATION OF ALL REPAIRS.
 2. CONTRACTOR SHALL VERIFY DIAMETER AND THICKNESS OF DIAGONALS AND STRUTS TO BE REPLACED. DIMENSIONS OF NEW MEMBERS SHALL MATCH THE EXISTING MEMBERS.

NO.	DATE	REVISION	BY
STATE OF WISCONSIN DEPARTMENT OF TRANSPORTATION DIVISION OF HIGHWAYS			
STRUCTURE S-18-9, 37; S-55-6, 9			
CONST. SPEC.	1996	DRAWN BY DJR	PLANS CK'D. BAP
SIGN BRIDGE REPAIRS			SHEET 6

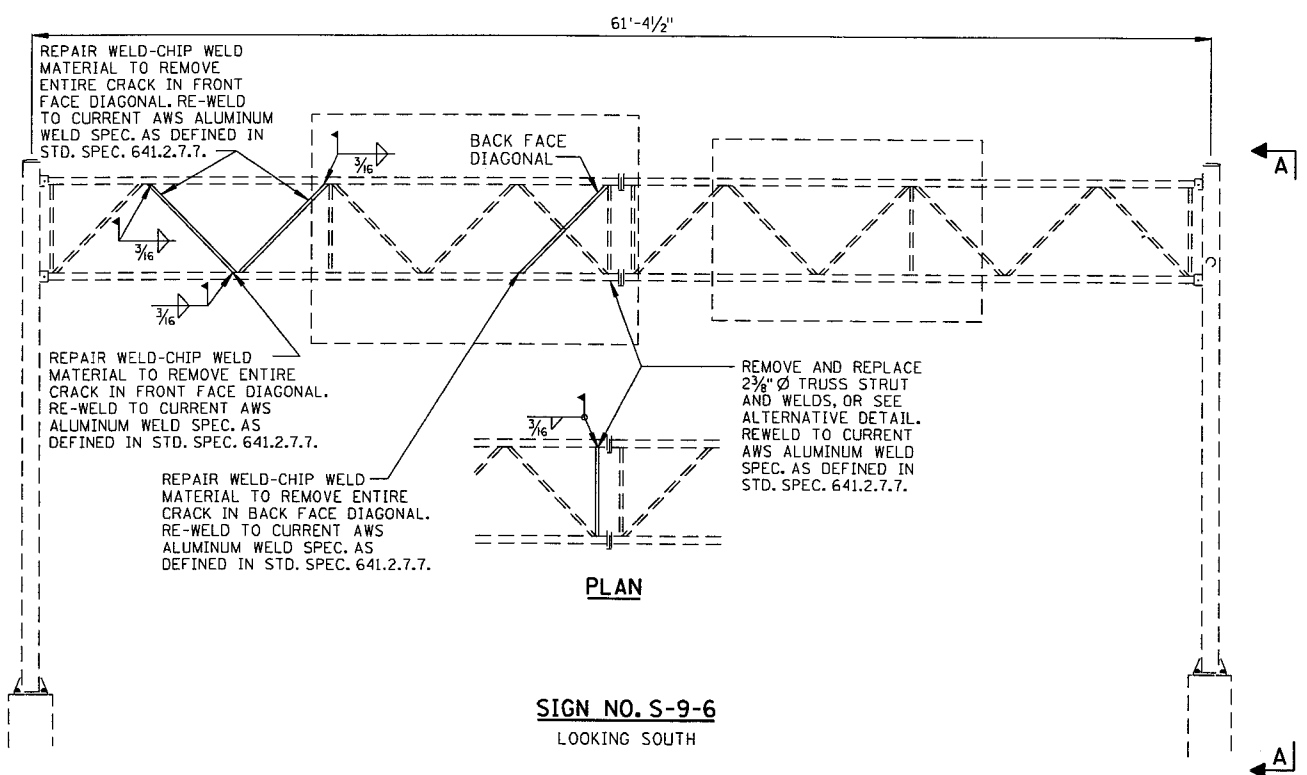
STATE PROJECT NUMBER	SHEET NO.
9227-00-23	8.7
VARIOUS INTERSTATE AND NON-INTERSTATE SIGN STRUCTURES	



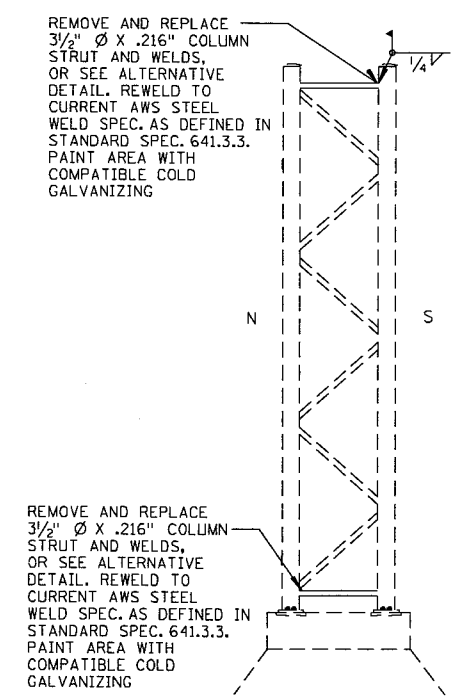
SIGN NO. S-9-3
LOOKING WEST



SIGN NO. S-18-8
LOOKING EAST



SIGN NO. S-9-6
LOOKING SOUTH



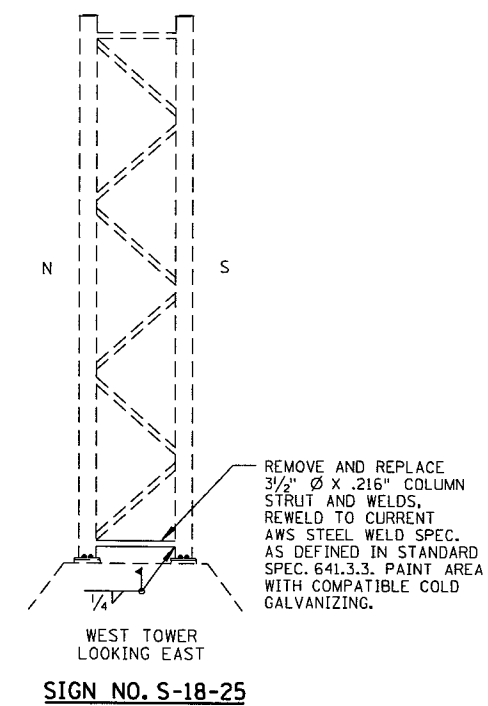
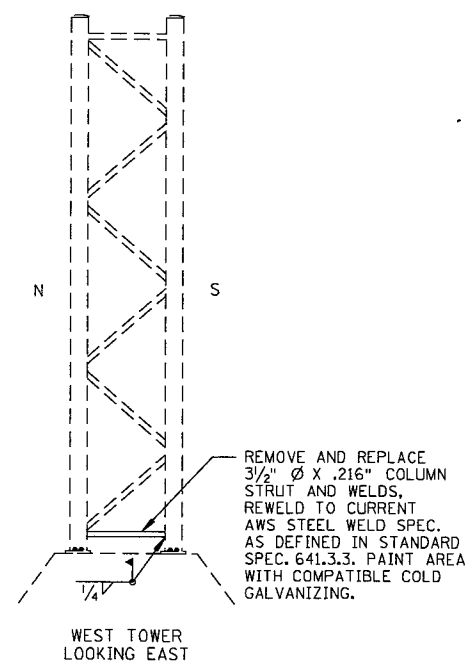
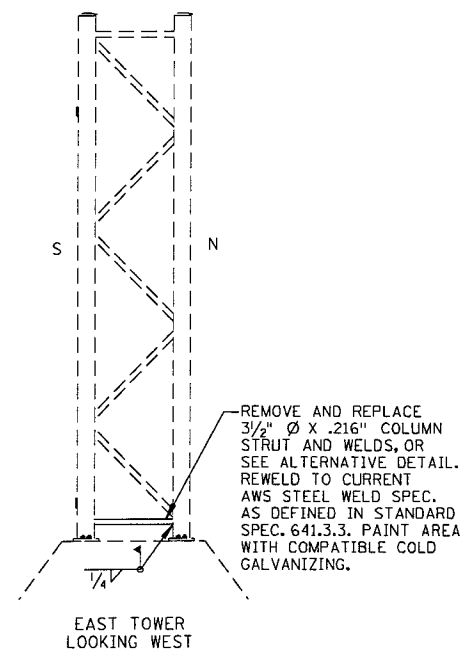
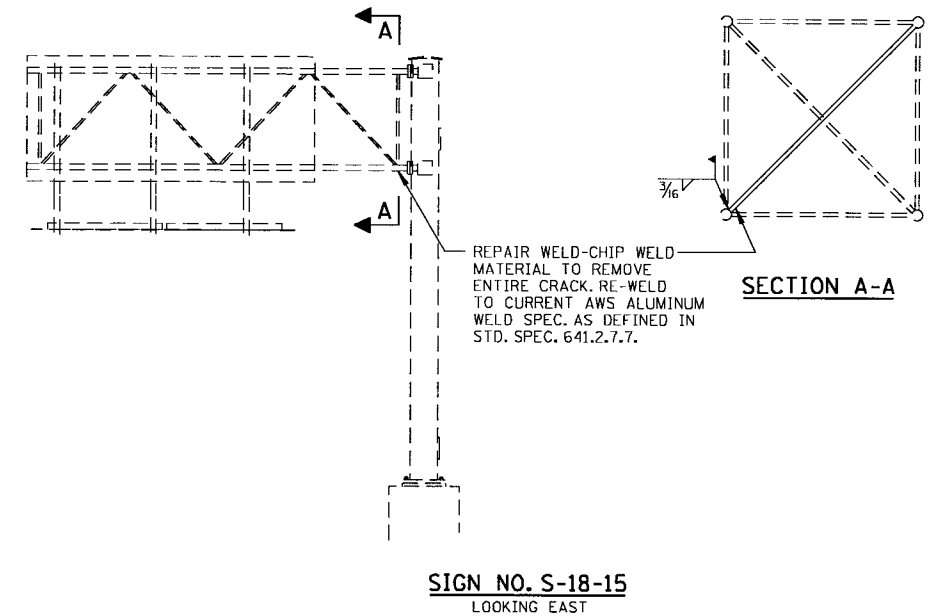
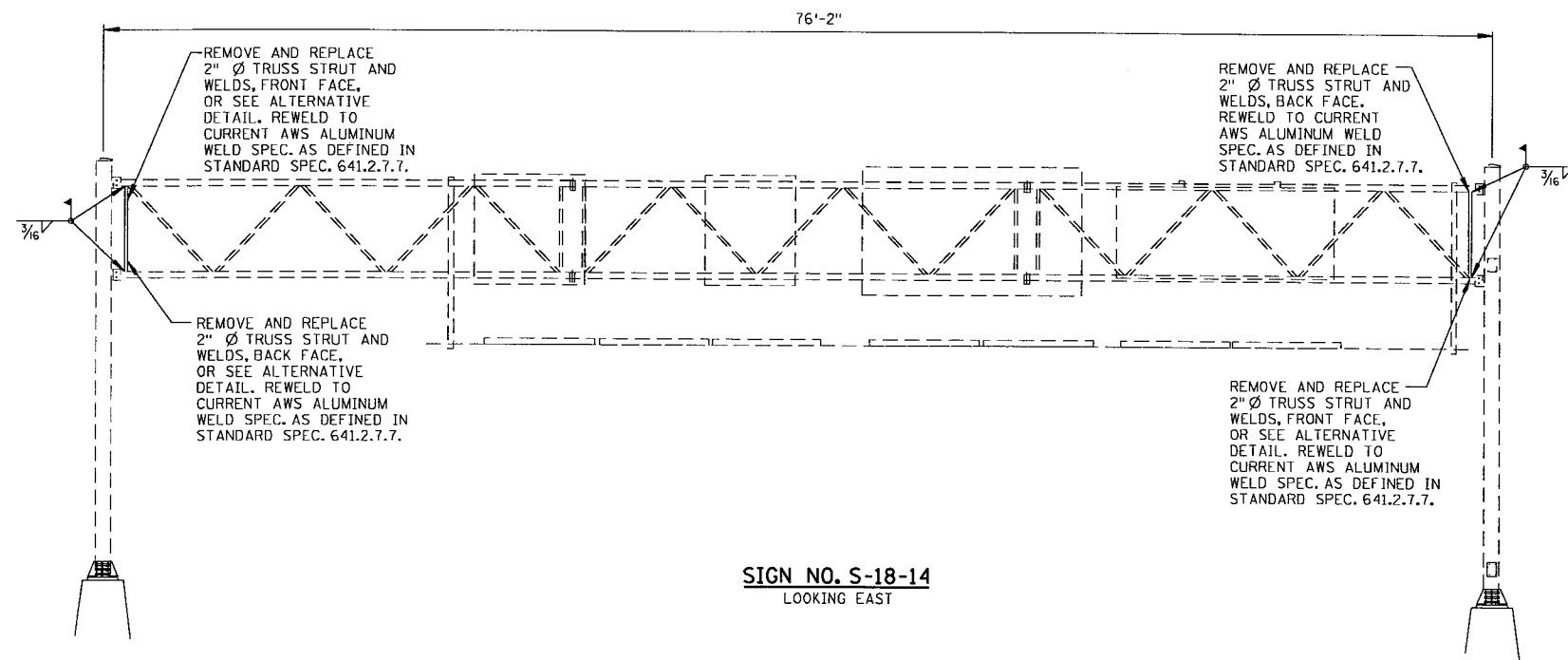
SECTION A-A

NOTES:
FOR SIGN BRIDGE REPAIR NOTES, SEE SHEET 9

NO.	DATE	REVISION	BY
STATE OF WISCONSIN DEPARTMENT OF TRANSPORTATION DIVISION OF HIGHWAYS			
STRUCTURE S-9-3 ,6; S-18-8			
CONST. SPEC.	1996	DRAWN BY DJR	PLANS CK'D. BAP
SIGN BRIDGE REPAIRS			SHEET 7

..Asignbrldgn

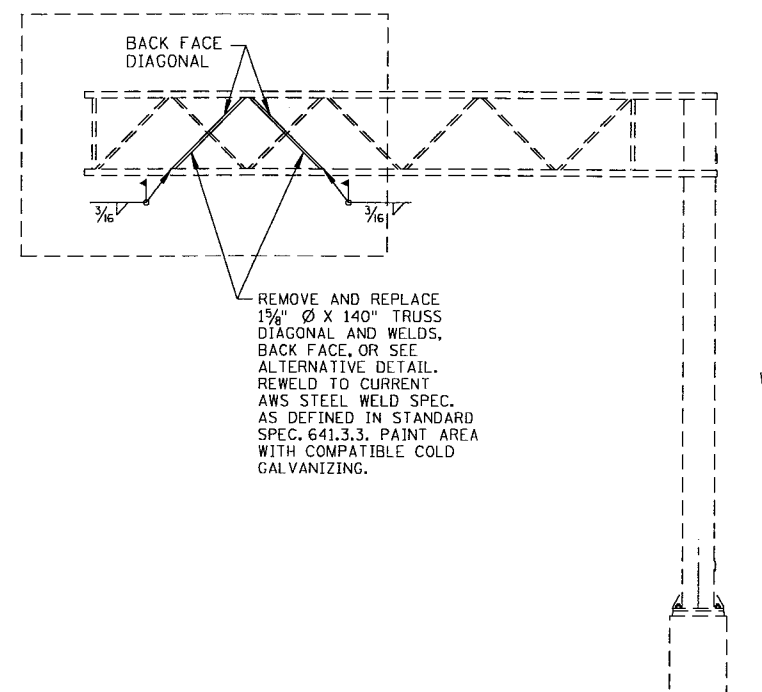
STATE PROJECT NUMBER	SHEET NO.
9227-00-23	8.8
VARIOUS INTERSTATE AND NON-INTERSTATE SIGN STRUCTURES	



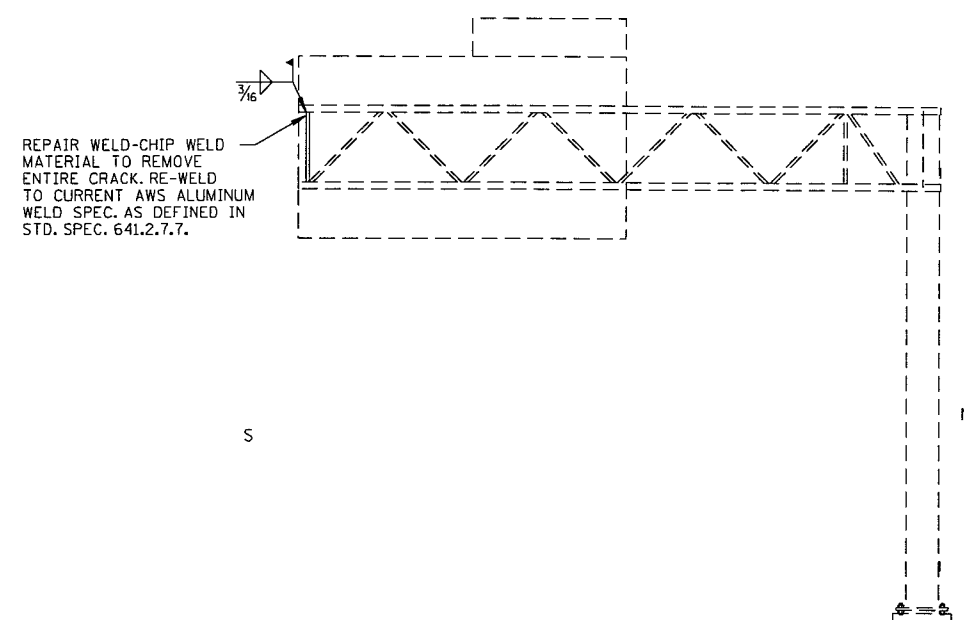
NOTES:
FOR SIGN BRIDGE REPAIR NOTES, SEE SHEET 9

NO.	DATE	REVISION	BY
STATE OF WISCONSIN DEPARTMENT OF TRANSPORTATION DIVISION OF HIGHWAYS			
STRUCTURE S-18-14, 15, 24, 25			
CONST. SPEC.	1996	DRAWN BY DJR	PLANS CK'D. BAP
SIGN BRIDGE REPAIRS			SHEET 8

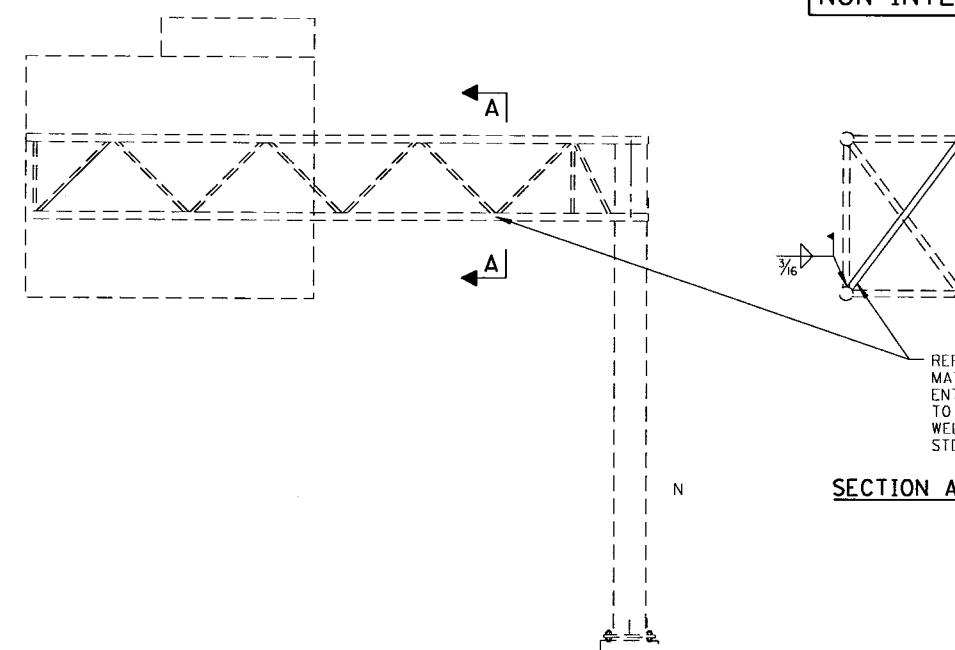
STATE PROJECT NUMBER	SHEET NO.
9227-00-23	8.9
VARIOUS INTERSTATE AND NON-INTERSTATE SIGN STRUCTURES	



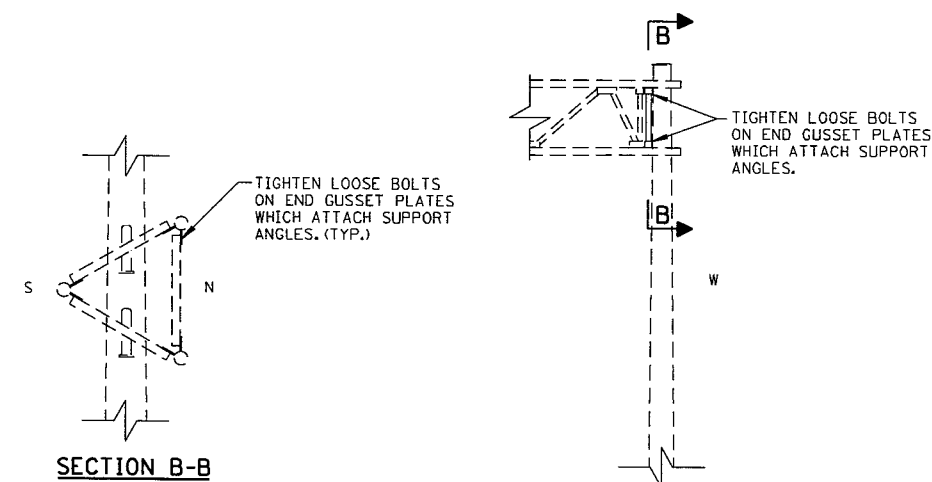
SIGN NO. S-18-38
LOOKING SOUTH



SIGN NO. S-55-18
LOOKING WEST

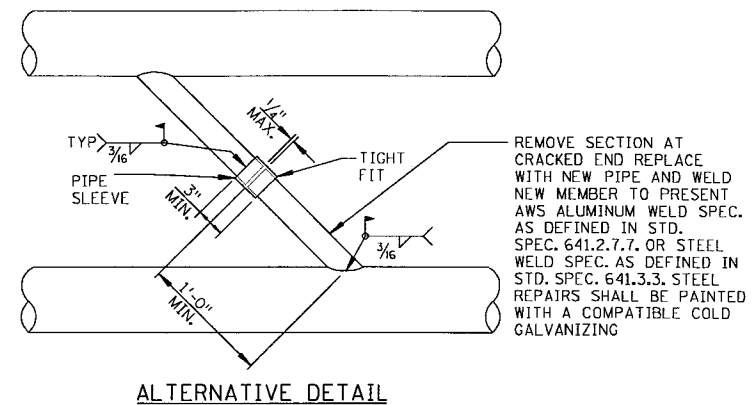


SIGN NO. S-55-16
LOOKING WEST

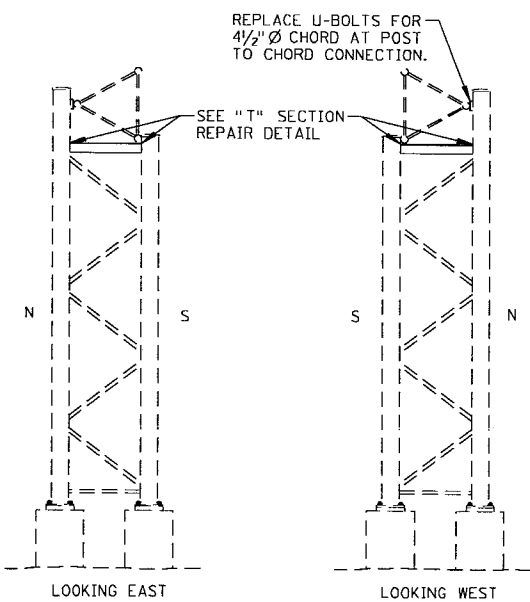


SIGN NO. S-18-19
LOOKING SOUTH

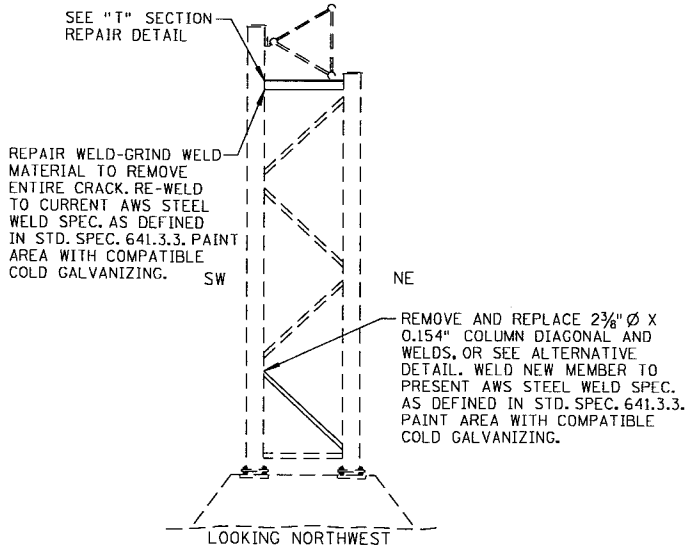
NO.	DATE	REVISION	BY
STATE OF WISCONSIN DEPARTMENT OF TRANSPORTATION DIVISION OF HIGHWAYS			
STRUCTURE S-18-19, 38; S-55-16, 18			
CONST. SPEC.	1996	DRAWN BY	DJR
SIGN BRIDGE REPAIRS		PLANS CK'D.	BAP
SHEET			9



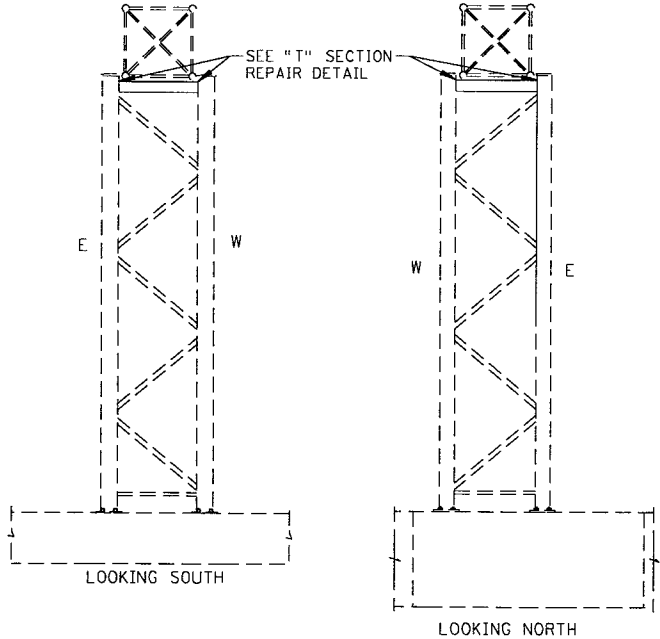
SIGN BRIDGE NUMBER	PLATE ASSEMBLIES		SADDLES		
	COL. OUT. DIA.	NO. REQ'D	CHORD DIA.	R1	NO. REQ'D
S - 18 - 27	10 3/4"	8	4 1/2"	2 9/32"	2
S - 18 - 41	10 3/4"	4	6 5/8"	3 1 1/32"	1
S - 55 - 2	10 3/4"	8	4 1/2"	2 9/32"	4



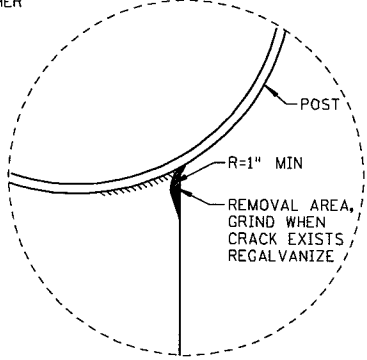
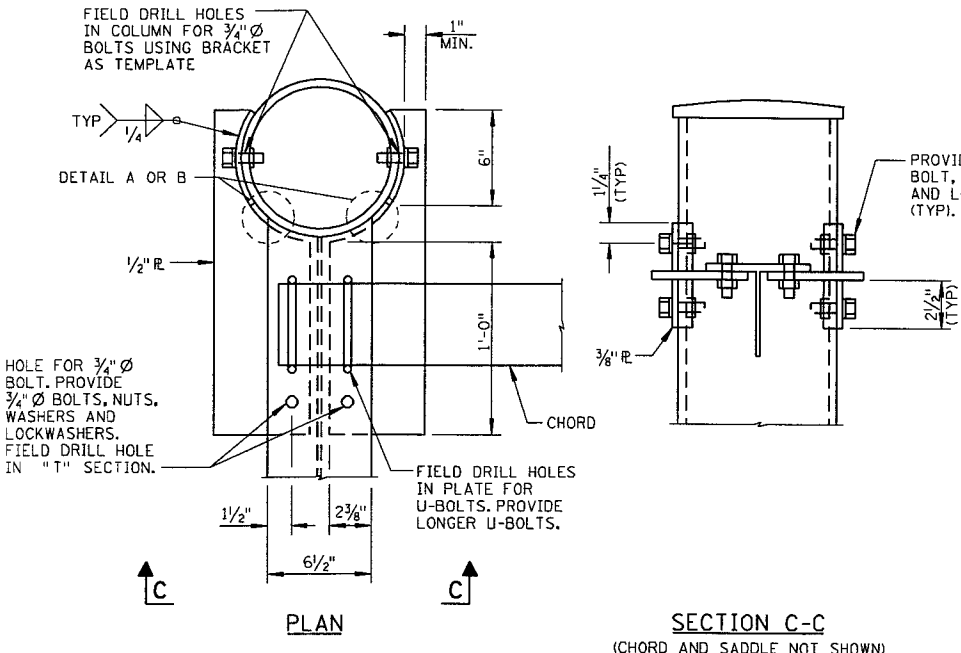
SIGN NO. S-18-27



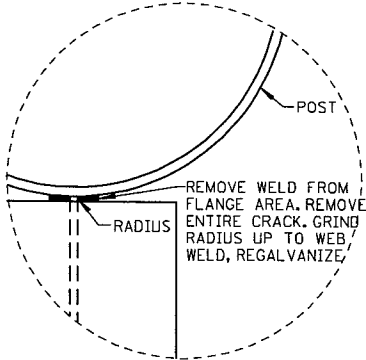
SIGN NO. S-18-41



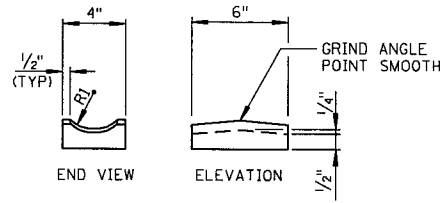
SIGN NO. S-55-2



DETAIL A



DETAIL B



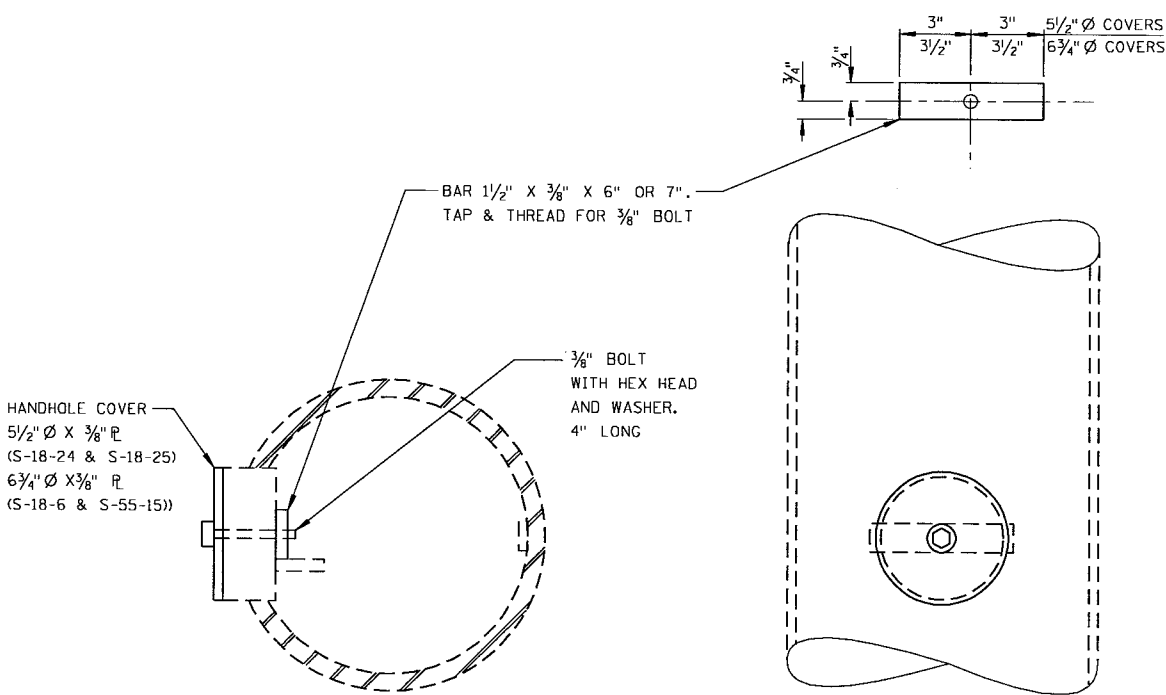
SADDLE DETAIL
(ALUM SHALL BE ASTM 356-T6)

NOTE:
GALVANIZE ALL FIELD DRILLED HOLES.

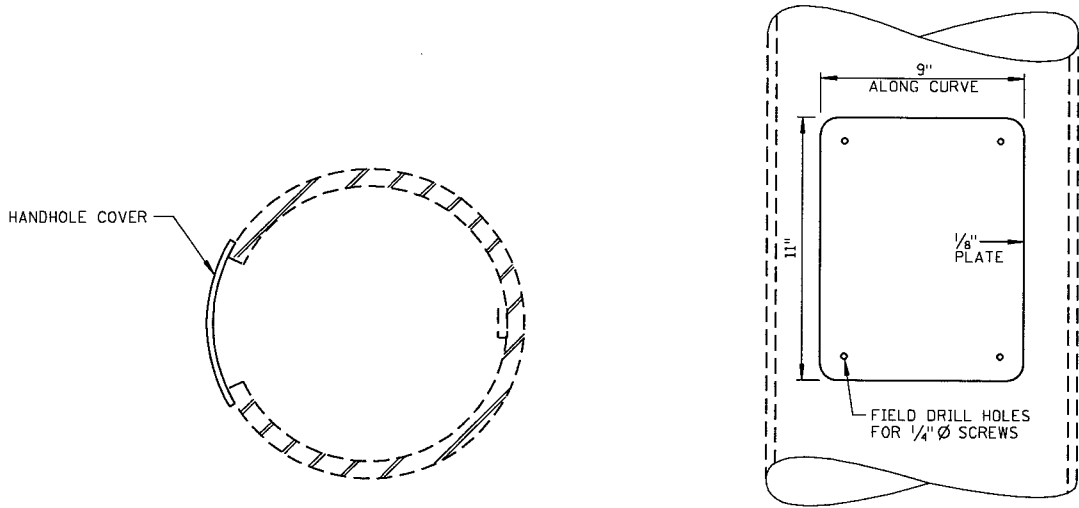
NO.	DATE	REVISION	BY
STATE OF WISCONSIN DEPARTMENT OF TRANSPORTATION DIVISION OF HIGHWAYS			
STRUCTURE S-18-27, 41; S-55-2			
CONST. SPEC.	1996	DRAWN BY SJL	PLANS CK'D. BAP
SIGN BRIDGE REPAIRS			SHEET 10

QUANTITIES FOR "REPLACE HANDHOLE COVER"						
SIGN BRIDGE	POST SIZE	HANDHOLE COVER TYPE	LOCATION	HANDHOLE COVER MATERIAL	SCREWS ^① REQUIRED	QUANTITY REQUIRED
S-18-5	10" DIA.	RECTANGULAR CURVED	NORTH TOWER BOT.	ALUM	4	1
S-18-6	16" DIA.	ROUND FLAT	BOTH TOWERS TOP & BOT	GALV STEEL	N/A	4
S-18-9	27" X 17"	N/A	SOUTH TOWER TOP	GALV STEEL	3	1 ②
S-18-13	10" DIA.	N/A	SOUTH TOWER BOT	ALUM	1	1 ②
S-18-21	27" X 17"	RECTANGULAR FLAT	TOP & BOT	GALV STEEL	8	2
S-18-23	27" X 17"	RECTANGULAR FLAT	TOP & BOT	GALV STEEL	8	2
S-18-24	10 3/4" DIA.	ROUND FLAT	EAST TOWER TOP & BOT	GALV STEEL	N/A	2
S-18-25	10 3/4" DIA.	ROUND FLAT	EAST TOWER TOP & BOT	GALV STEEL	N/A	2
S-55-15	20" DIA.	ROUND FLAT	NORTH TOWER BOT	GALV STEEL	N/A	1
TOTAL						15

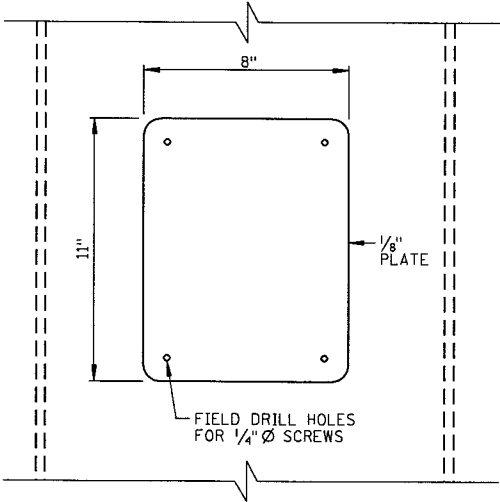
- ① ALL SCREWS TO BE 1/4" HEX CAP STAINLESS SCREWS.
 PROVIDE NUMBER OF SCREWS SHOWN; DRILL AND TAP HOLES AS REQUIRED
 TO SECURELY FASTEN HANDHOLE COVER. PAYMENT INCLUDED IN PRICE BID
 FOR "REPLACE HANDHOLE COVER"
- ② NO HANDHOLE COVER REQUIRED, REPLACE SCREWS AS NOTED ABOVE.



HANDHOLE COVER TYPE ROUND FLAT



HANDHOLE COVER TYPE RECTANGULAR CURVED



HANDHOLE COVER TYPE RECTANGULAR FLAT

STATE PROJECT NUMBER	SHEET NO.
9227-00-23	8.11
VARIOUS INTERSTATE AND NON-INTERSTATE SIGN STRUCTURES	

NO.	DATE	REVISION	BY
STATE OF WISCONSIN DEPARTMENT OF TRANSPORTATION DIVISION OF HIGHWAYS			
STRUCTURE		S-18-5, 6, 9, 13, 21, 23, S-18-24, 25; S-55-15	
CONST. SPEC.	1996	DRAWN BY	DJR PLANS CK'D. BAP
SIGN BRIDGE REPAIRS		SHEET 11	

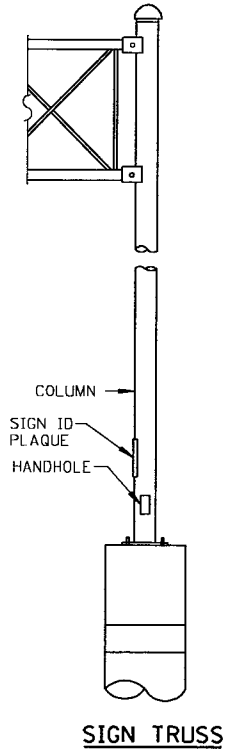
QUANTITIES FOR SIGNING WORK				
SIGN BRIDGE	REPLACE MISSING SIGN BRIDGE ID PLAQUE	PLACE OR REPLACE SIGN PANEL CONNECTORS	REPLACE U-BOLT	INCIDENTAL REPAIRS
	(EA)	(EA)	(EA)	
S - 9 - 1	1 (1)			
S - 9 - 2	1 (1)	1		
S - 9 - 3	1 (1)			
S - 9 - 4	1 (1)	41		
S - 9 - 6	1 (2)	2		
S - 9 - 7	1			
S - 9 - 9	1			
S - 10 - 1	1			
S - 17 - 4	1			
S - 18 - 4	1	15		
S - 18 - 5	1 (1)			
S - 18 - 6	1	1		
S - 18 - 8	1 (1)			
S - 18 - 9	1 (1)			
S - 18 - 11	1 (1)			
S - 18 - 12	1 (1)			
S - 18 - 13	1 (1)		1	
S - 18 - 14	1 (1)			
S - 18 - 15	1 (1)			
S - 18 - 17	1	4		
S - 18 - 18	1 (1)			RE-RIVET SIGN BORDER TO SIGN PANEL & REPAIR SIGN SHEETING
S - 18 - 19	1 (1)			
S - 18 - 21	1 (1)			
S - 18 - 22	1 (1)			
S - 18 - 23	1 (1)			
S - 18 - 24	1 (1)			
S - 18 - 25	1 (1)			
S - 18 - 26	1 (1)			
S - 18 - 27	1 (1)			
S - 18 - 28	1 (1)	1		
S - 18 - 31	1			
S - 18 - 32	1			
S - 18 - 33	1			
S - 18 - 34	1			
S - 18 - 35	1			
S - 18 - 36	1			
S - 18 - 37	1			
S - 18 - 38	1			
S - 18 - 39	1			
S - 18 - 40	1			
S - 18 - 41	1			
S - 18 - 42	1	2		
S - 18 - 43	1			
S - 18 - 44	2			
S - 18 - 45	2			
S - 18 - 46	1			
S - 18 - 47	1			
S - 18 - 49	1		1	
S - 18 - 50	1			

QUANTITIES FOR SIGNING WORK				
SIGN BRIDGE	REPLACE MISSING SIGN BRIDGE ID PLAQUE	PLACE OR REPLACE SIGN PANEL CONNECTORS	REPLACE U-BOLT	INCIDENTAL REPAIRS
	(EA)	(EA)	(EA)	
S - 55 - 2	1			
S - 55 - 6	1			
S - 55 - 7	1			
S - 55 - 9	1			
S - 55 - 11	1			
S - 55 - 12	1			
S - 55 - 14	1			
S - 55 - 15	1	1		
S - 55 - 16	1			
S - 55 - 17	1			
S - 55 - 18	1			
S - 55 - 19	1			
S - 55 - 20	1			
S - 55 - 21	1			
S - 55 - 22	1			
S - 55 - 23	1			
S - 55 - 24	1			
S - 55 - 25	1			
S - 55 - 26	1			
S - 55 - 27	1			
S - 55 - 28	1			
S - 55 - 29	1			

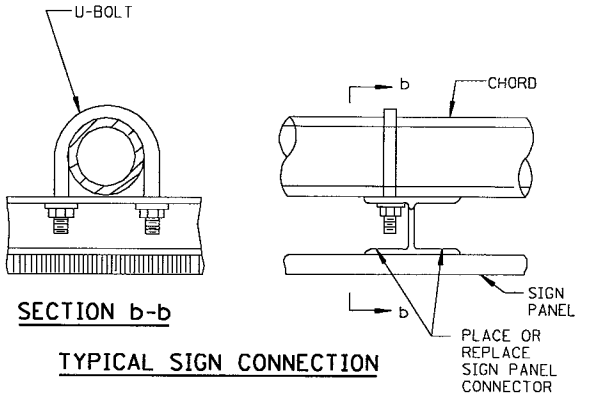
TABLE OF LOCATIONS & NOTES		
SIGN BRIDGE	PLACE OR REPLACE SIGN PANEL CONNECTORS (EA)	REPLACE U-BOLT (EA)
S - 9 - 2	MISSING - WEST SIGN	
S - 9 - 4	MISSING - 22 ON WEST SIGN; 19 ON EAST SIGN	
S - 9 - 6	MISSING - EAST SIGN	
S - 18 - 4	MISSING - 8 ON NORTH SIGN; 7 ON SOUTH SIGN	
S - 18 - 6	BROKEN - SOUTH SIGN	
S - 18 - 13		BROKEN - NORTH SIGN
S - 18 - 17	MISSING - EAU CLAIRE SIGN	
S - 18 - 28	MISSING	
S - 18 - 42	MISSING - EAST SIGN	
S - 18 - 49		CRACKED - EAST SIGN
S - 55 - 15	BROKEN - SOUTH SIGN	

NOTES
(1) SIGN NUMBER PAINTED ON. ADD STANDARD SIGN ID PLAQUE.
(2) SIGN NUMBER IS INCORRECT. REMOVE AND REPLACE WITH CORRECT SIGN ID PLAQUE.

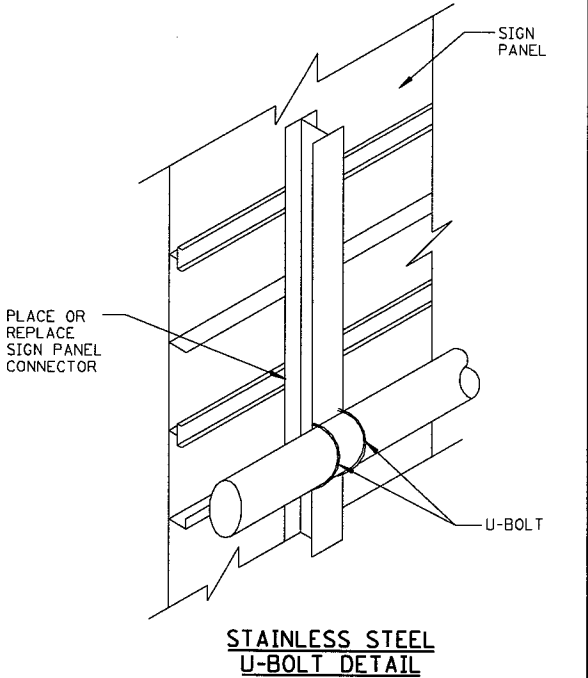
CONTRACTOR SHALL VERIFY EXACT LOCATION OF ALL REPAIRS.
ALL STAINLESS STEEL BOLTS, LOCKWASHERS & NUTS SHALL CONFORM TO ASTM A276.
ANY OF THE 300 SERIES WHICH HAVE A MIN. YIELD OF 40,000 P.S.I. AND ELONGATION OF 15% FOR OVER 3/4" & 12% FOR 3/4" & UNDER SHALL BE USED.
U BOLTS SHALL BE 1/2" Ø SS WITH 2 LOCKWASHERS & 2 HEX NUTS.



STATE PROJECT NUMBER	SHEET NO.
9227-00-23	8.12
VARIOUS INTERSTATE AND NON-INTERSTATE SIGN STRUCTURES	



SECTION b-b
TYPICAL SIGN CONNECTION



NO.	DATE	REVISION	BY
STATE OF WISCONSIN DEPARTMENT OF TRANSPORTATION DIVISION OF HIGHWAYS			
STRUCTURE			
CONST. SPEC.	1996	DRAWN BY SJL	PLANS CR'D. DRS
SIGNING REPAIRS			SHEET 12