

GENERAL NOTE

THE LOCATION OF EXISTING AND PROPOSED UTILITY INSTALLATIONS AS SHOWN ON THE PLANS ARE APPROXIMATE. THERE MAY BE OTHER UTILITY INSTALLATIONS WITHIN THE PROJECT AREA THAT ARE NOT SHOWN. THE CONTRACTOR SHALL VERIFY THE LOCATIONS OF ALL UTILITIES PRIOR TO CONSTRUCTION.


NOTE

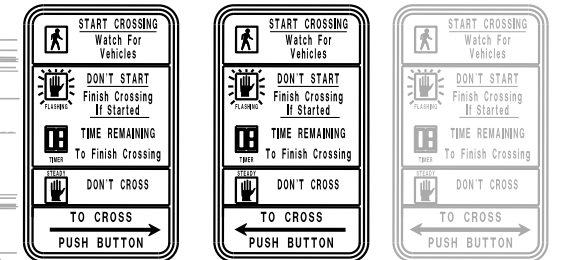
WISCONSIN DOT NE REGION ELECTRICAL UNIT SHALL APPROVE FINAL LOCATIONS FOR ALL LOOP DETECTORS, CONCRETE BASES, & PED BUTTONS IN THE FIELD PRIOR TO CONSTRUCTION AND MAKE WIRING TERMINATIONS IN THE SIGNAL CABINET. CONTACT THEM 3 DAYS IN ADVANCE AT (920) 366-3107.



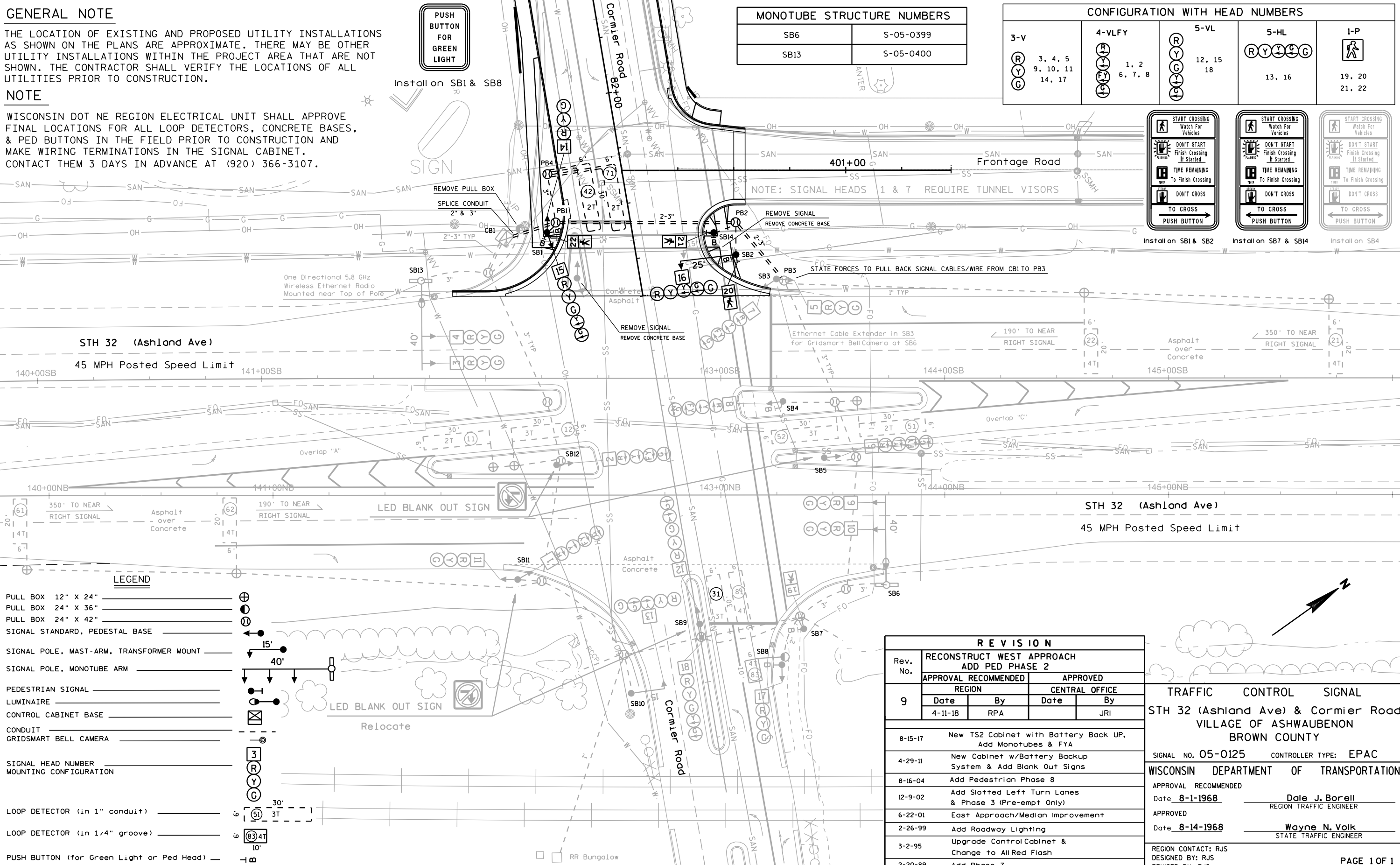
Install on SB1 & SB8

MONOTUBE STRUCTURE NUMBERS	
SB6	S-05-0399
SB13	S-05-0400

CONFIGURATION WITH HEAD NUMBERS				
3-V	4-VLFY	5-VL	5-HL	1-P
<div><div>R</div><div>Y</div><div>G</div></div> <div>3, 4, 5 9, 10, 11 14, 17</div>	<div><div>R</div><div>Y</div><div>FY</div><div>G</div></div> <div>1, 2 6, 7, 8</div>	<div><div>R</div><div>Y</div><div>G</div><div>Y</div><div>C</div></div> <div>12, 15 18</div>	<div><div>R</div><div>Y</div><div>Y</div><div>C</div><div>G</div></div> <div>13, 16</div>	<div><div></div></div> <div>19, 20 21, 22</div>



Install on SB1 & SB2 Install on SB7 & SB14 Install on SB4



LEGEND

- PULL BOX 12" X 24"
- PULL BOX 24" X 36"
- PULL BOX 24" X 42"
- SIGNAL STANDARD, PEDESTAL BASE
- SIGNAL POLE, MAST-ARM, TRANSFORMER MOUNT
- SIGNAL POLE, MONOTUBE ARM
- PEDESTRIAN SIGNAL
- LUMINAIRE
- CONTROL CABINET BASE
- CONDUIT
- GRIDSMArt BELL CAMERA
- SIGNAL HEAD NUMBER
- MOUNTING CONFIGURATION
- LOOP DETECTOR (in 1" conduit)
- LOOP DETECTOR (in 1/4" groove)
- PUSH BUTTON (for Green Light or Ped Head)

R E V I S I O N				
Rev. No.	RECONSTRUCT WEST APPROACH ADD PED PHASE 2			
	APPROVAL RECOMMENDED		APPROVED	
9	REGION		CENTRAL OFFICE	
	Date	By	Date	By
	4-11-18	RPA		JRI
8-15-17	New TS2 Cabinet with Battery Back UP, Add Monotubes & FYA			
4-29-11	New Cabinet w/Battery Backup System & Add Blank Out Signs			
8-16-04	Add Pedestrian Phase 8			
12-9-02	Add Slotted Left Turn Lanes & Phase 3 (Pre-empt Only)			
6-22-01	East Approach/Median Improvement			
2-26-99	Add Roadway Lighting			
3-2-95	Upgrade Control Cabinet & Change to All Red Flash			
2-20-89	Add Phase 7			

TRAFFIC CONTROL SIGNAL	
STH 32 (Ashland Ave) & Cormier Road VILLAGE OF ASHWAUBENON BROWN COUNTY	
SIGNAL NO. 05-0125	CONTROLLER TYPE: EPAC
WISCONSIN DEPARTMENT OF TRANSPORTATION	
APPROVAL RECOMMENDED	
Date <u>8-1-1968</u>	<u>Date J. Borell</u> REGION TRAFFIC ENGINEER
APPROVED	
Date <u>8-14-1968</u>	<u>Wayne N. Volk</u> STATE TRAFFIC ENGINEER
REGION CONTACT: RJS DESIGNED BY: RJS	
PAGE 1 OF 1	