

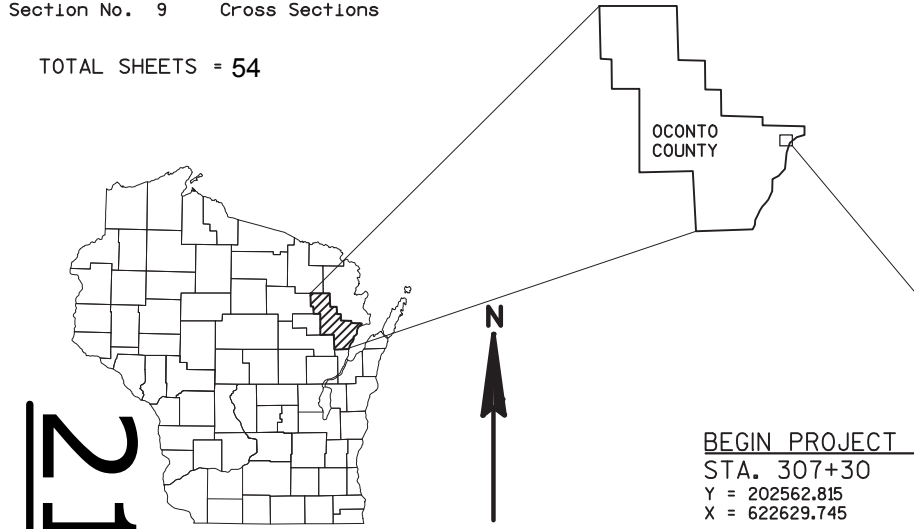
NEL
PROJECT ID: 9007-03-71
WITH: N/A
COUNTY: OCONTO

NOVEMBER 2017

ORDER OF SHEETS

Section No. 1	Title
Section No. 2	Typical Sections and Details (includes erosion control plan)
Section No. 3	Estimate of Quantities
Section No. 3	Miscellaneous Quantities
Section No. 4	Right of Way Plat
Section No. 5	Plan and Profile
Section No. 6	Standard Detail Drawings
Section No. 7	Sign Plates
Section No. 8	Structure Plans
Section No. 9	Computer Earthwork Data
Section No. 9	Cross Sections

TOTAL SHEETS = 54



DESIGN DESIGNATION		
A.A.D.T. (2018)	=	490
A.A.D.T. (2038)	=	560
D.H.V.	=	115
D.D.	=	0.5
T.	=	8.3%
DESIGN SPEED	=	60 MPH
ESALS	=	88,000

CONVENTIONAL SYMBOLS

PLAN	PROFILE
CORPORATE LIMITS	GRADE LINE
PROPERTY LINE	ORIGINAL GROUND
LOT LINE	MARSH OR ROCK PROFILE (To be noted as such)
LIMITED HIGHWAY EASEMENT	SPECIAL DITCH
EXISTING RIGHT OF WAY	GRADE ELEVATION
PROPOSED OR NEW R/W LINE	CULVERT (Profile View)
SLOPE INTERCEPT	UTILITIES
REFERENCE LINE	ELECTRIC
EXISTING CULVERT	FIBER OPTIC
PROPOSED CULVERT (Box or Pipe)	GAS
COMBUSTIBLE FLUIDS	SANITARY SEWER
	STORM SEWER
	TELEPHONE
	WATER
MARSH AREA	UTILITY PEDESTAL
	POWER POLE
WOODED OR SHRUB AREA	TELEPHONE POLE

STATE OF WISCONSIN
DEPARTMENT OF TRANSPORTATION

PLAN OF PROPOSED IMPROVEMENT

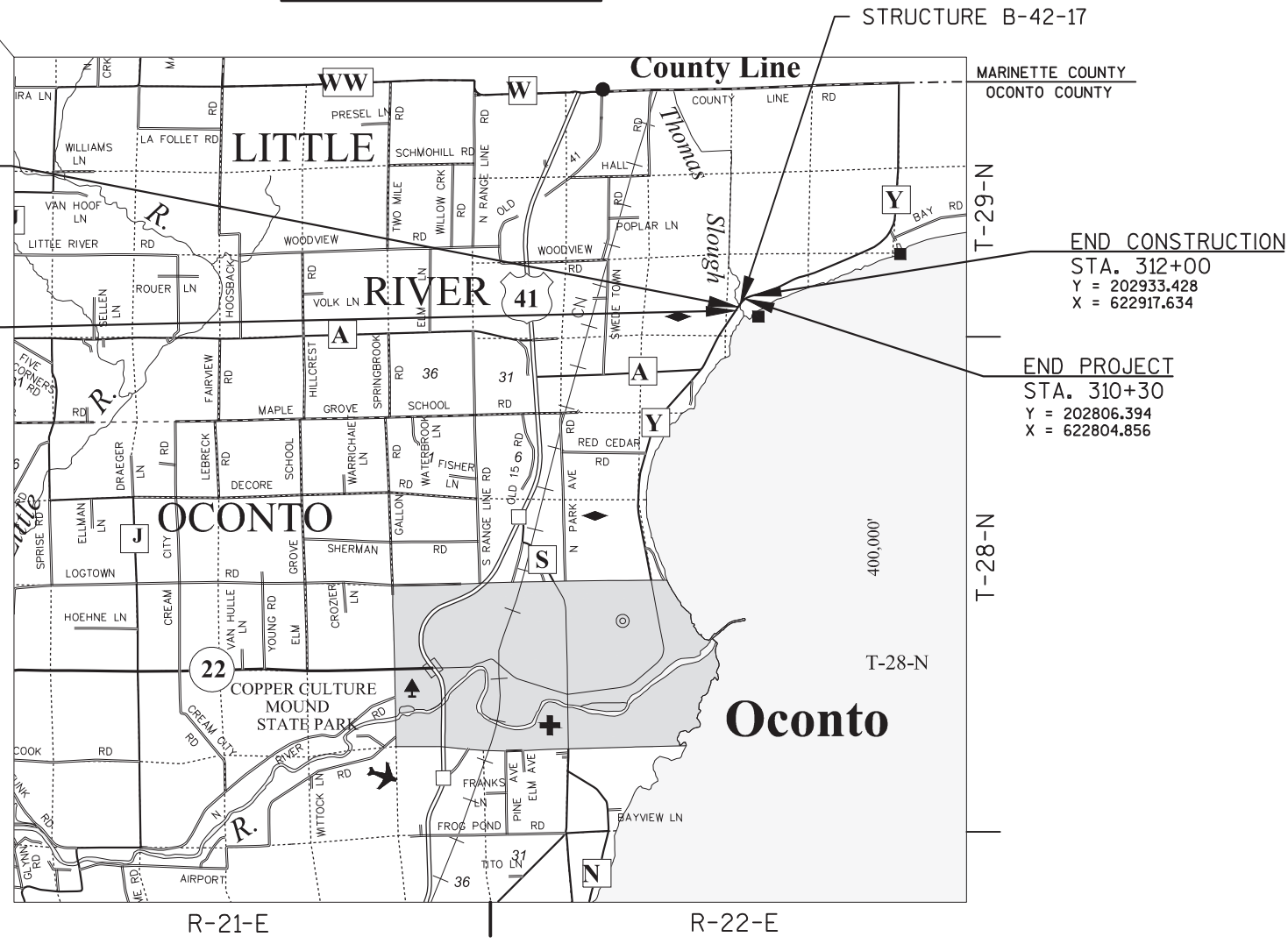
T LITTLE RIVER, CTH Y

THOMAS SLOUGH BRIDGE & APPROACHES

CTH Y

OCONTO COUNTY

STATE PROJECT NUMBER
9007-03-71



TOTAL NET LENGTH OF CENTERLINE = 0.057 MILES

HORIZONTAL POSITIONS SHOWN ON THIS PLAN ARE WISCONSIN COUNTY COORDINATES, OCONTO COUNTY, NAD83 (2011), IN U.S. SURVEY FEET. VALUES ARE GRID COORDINATES, GRID BEARINGS, AND GRID DISTANCES. GRID DISTANCES MAY BE USED AS GROUND DISTANCES.

STRUCTURE AS-BUILT PLAN
SUPERVISOR: Dan Segerstrom
PROJECT MANAGER: Matt Ternes
PROJECT LEADER: April Glime, Daar Engineering
PRIME CONTRACTOR: Lunda Construction Co.
BRIDGE CONTRACTOR: Lunda Construction Co.
CONCRETE OVERLAY SUPPLIER: Lunda Const. Co.
WORK STARTED: 9/10/2018
WORK COMPLETED: 10/8/2018

ACCEPTED FOR
COUNTY OF OCONTO

4/27/17 Patrick Skarlan
(Date) (Signature & Title of Official)

ORIGINAL PLAN PREPARED BY

BECHER HOPPE 330 Fourth Street • PO Box 8000
Wausau, WI • 54402-8000
715.845.8000 • Fax 715.845.8008
becherhoppe.com

WISCONSIN
MICHAEL V. KOWAL
E-36885
WAUSAU, WI
PROFESSIONAL ENGINEER

4-26-2017
(Date) (Signature)

STATE OF WISCONSIN
DEPARTMENT OF TRANSPORTATION
PREPARED BY
Surveyor BECHER HOPPE
Designer BECHER HOPPE
Management Consultant JT ENGINEERING, INC.

APPROVED FOR THE DEPARTMENT
DATE: 4/26/17 (Management Consultant Signature)

E

Protective Surface Treatment Used:
Manufacturer: TK Products
Product: TK-590-1MS

STATE PROJECT NUMBER
9007-03-71

GENERAL NOTES

- DRAWINGS SHALL NOT BE SCALED
- PROFILE GRADE LINE SHALL BE DETERMINED BASED ON A MINIMUM OVERLAY THICKNESS OF 1 1/2" PLACED ABOVE THE DECK SURFACE AFTER CLEANING, EXPECTED AVERAGE OVERLAY THICKNESS IS 2". IF EXPECTED AVERAGE OVERLAY THICKNESS IS EXCEEDED BY MORE THAN 1/2", CONTACT THE STRUCTURES DESIGN SECTION.
- DIMENSIONS AND STATIONING SHOWN ARE BASED ON THE ORIGINAL STRUCTURE PLANS.
- ANY EXCAVATION REQUIRED TO COMPLETE THE OVERLAY SHALL BE CONSIDERED INCIDENTAL TO THE BID ITEM "CONCRETE MASONRY OVERLAY DECKS".
- EXISTING CROWN IS 1.0%. MAINTAIN THE EXISTING CROWN WITH THE CONCRETE OVERLAY.
- A MINIMUM OF 1 1/2" OF CONCRETE SHALL BE REMOVED FROM THE ENTIRE BRIDGE DECK UNDER THE BID ITEM "CLEANING DECKS".
- PROTECTIVE SURFACE TREATMENT SHALL BE APPLIED TO THE ENTIRE TOP SURFACE OF THE NEW CONCRETE OVERLAY.
- PROVIDE 1 1/2" DEEP SAW CUT ALONG DECK PRIOR TO CONCRETE REMOVAL. WORK IS INCIDENTAL TO THE BID ITEM "CLEANING DECKS".
- THE COLOR OF THE FINISH TOP COAT FOR ALL PAINTED STEEL SHALL BE GRAY, (FEDERAL STANDARD COLOR NO. 26293) OR SIMILAR COLOR APPROVED BY THE ENGINEER.
- ALL CONCRETE REMOVAL NOT COVERED WITH A CONCRETE OVERLAY SHALL BE DEFINED BY A 1" DEEP SAW CUT.

DESIGN DATA

MATERIAL PROPERTIES
CONCRETE MASONRY OVERLAY DECKS: f'c = 4,000 PSI

LIVE LOAD
INVENTORY RATING: HS-17
OPERATIONAL RATING: HS-29
WISCONSIN STANDARD PERMIT VEHICLE (WIS-SPV): 230 KIPS

TRAFFIC DATA
AADT (2018) 490
AADT (2038) 560

LEGEND

DIRECTION OF TRAVEL →

LIST OF DRAWINGS

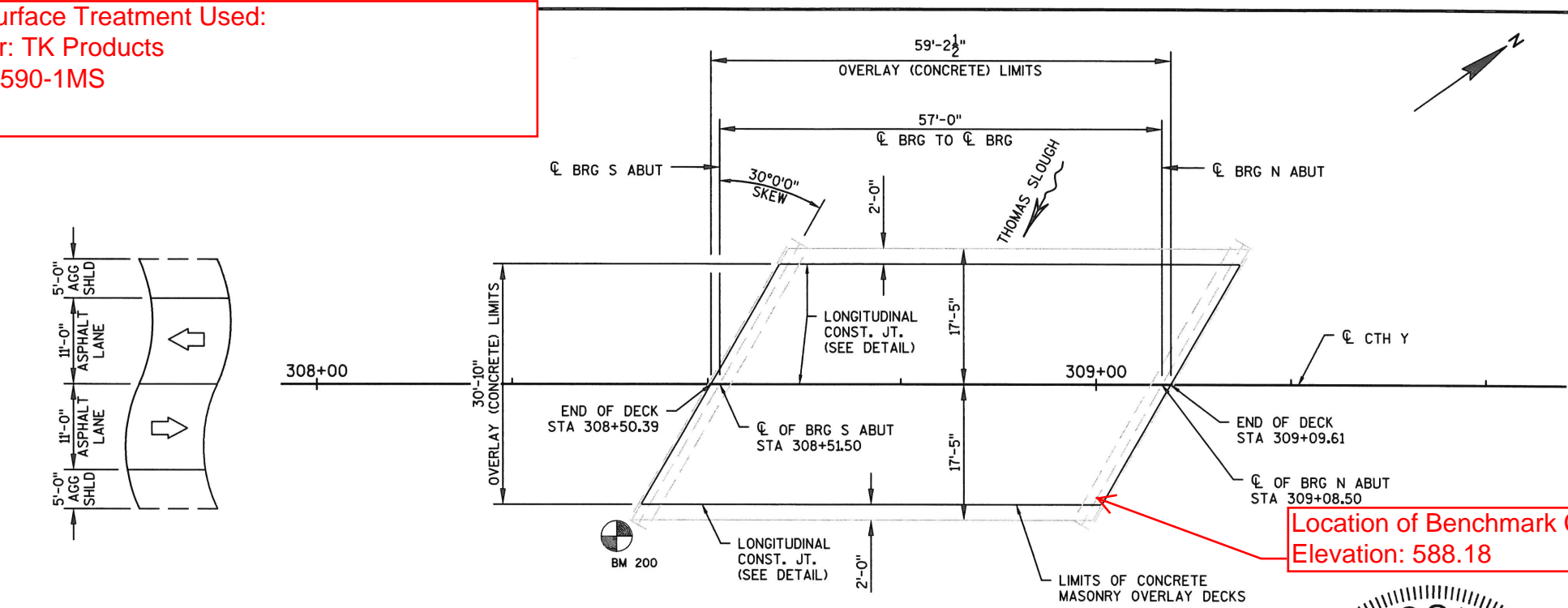
- OVERLAY PLAN
- ELEVATION VIEW

CONTACTS

BUREAU OF STRUCTURES CONTACT
WILLIAM DREHER: 608-266-8489

CONSULTANT CONTACT
MICHAEL KOWAL: 715-845-8000

NO.	DATE	REVISION	BY
BECHER HOPPE 330 Fourth Street • PO Box 8000 Wausau, WI • 54402-8000 715.845.8000 • Fax 715.845.8008 becherhoppe.com			
STATE OF WISCONSIN DEPARTMENT OF TRANSPORTATION			
ACCEPTED <i>William C. Dreher</i> ^{SOR}		05/12/17 DATE	
CHIEF STRUCTURES DESIGN ENGINEER			
STRUCTURE B-42-17			
CTH Y OVER THOMAS SLOUGH			
COUNTY	OCONTO	TOWN/CITY/VILLAGE	LITTLE RIVER
DESIGN SPEC.	REHABILITATION	N/A	
DESIGNED BY	AEB	DESIGN CK'D.	CJM
DRAWN BY	DJG	PLANS CK'D.	MVK
OVERLAY PLAN			SHEET 1 OF 2



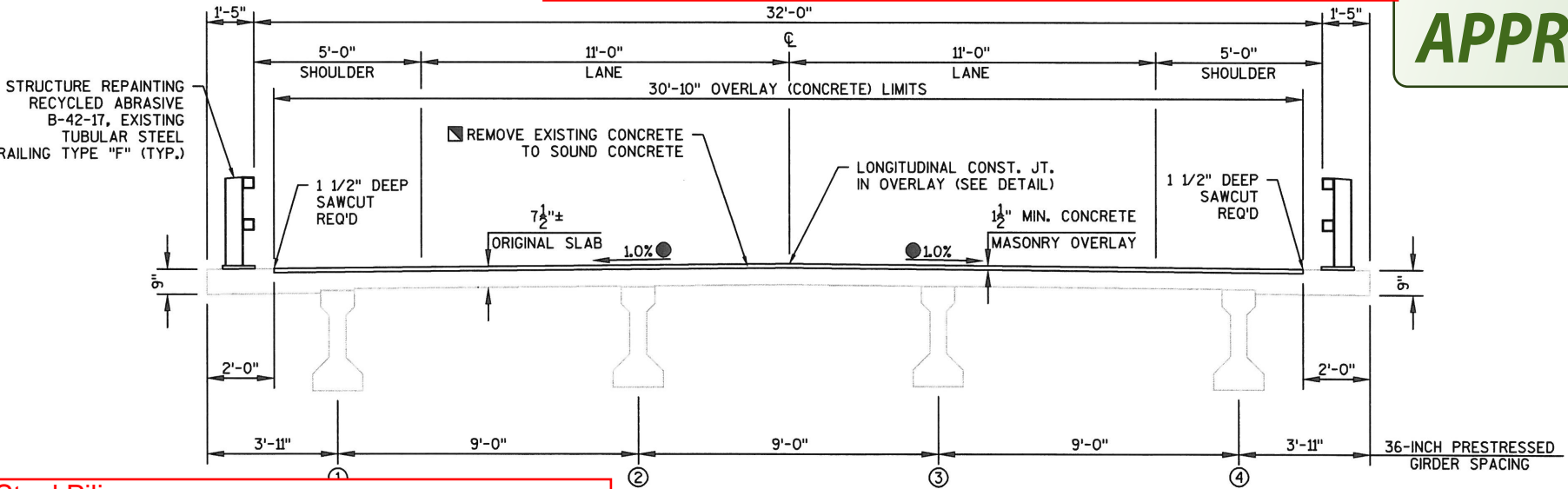
PLAN
(CONCRETE OVERLAY ON EXISTING SINGLE SPAN
PRESTRESSED CONCRETE GIRDER BRIDGE)

NO.	DESCRIPTION	ELEV.
200	CHISELED X ON S CORNER OF BRIDGE	588.01
202	60D NAIL	587.44

Paint Used on Type F Railing:
Manufacturer Coats Product
International Paint, Inc. 1st Interzinc 52
International Paint, Inc. 2nd Interguard 475 HS
Interthane 870 3rd Interthane 870
Application Completed By C&L Contracting P.O. Box 735 Gillett, WI 54124



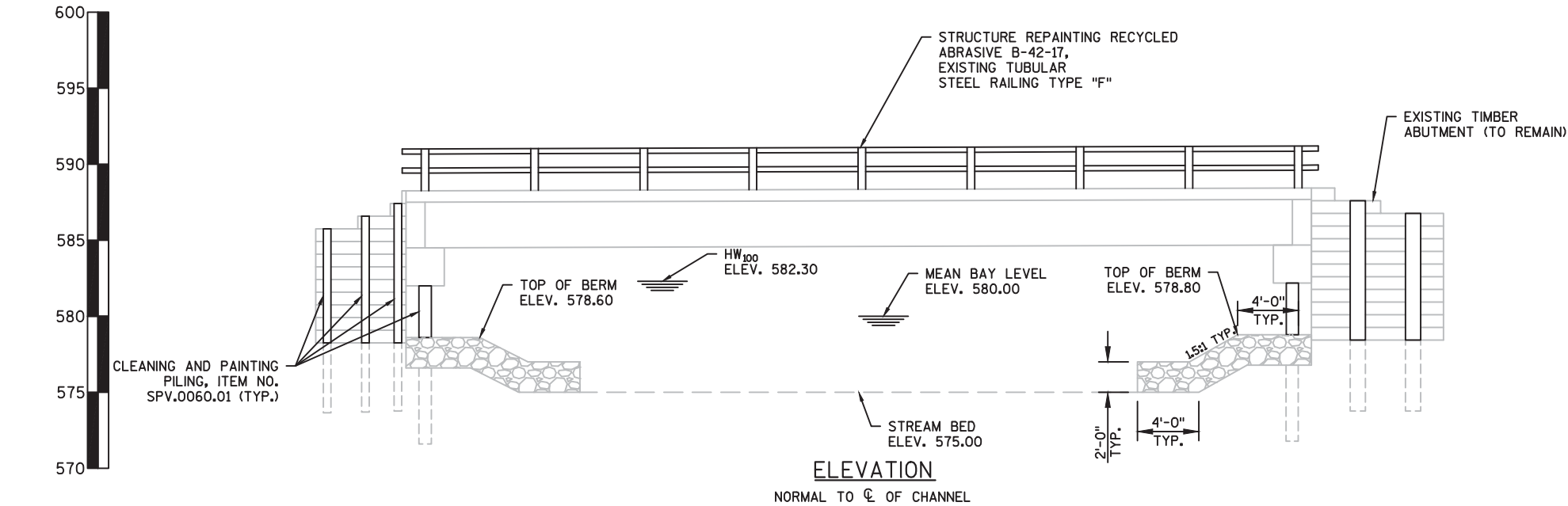
APPROVED



CROSS SECTION THRU ROADWAY

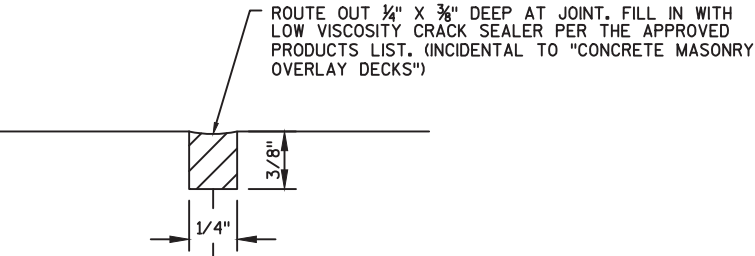
⊙ INDICATES GIRDER NO.

Paint Used on Steel Piling:
Manufacturer Coats Product
International Paint, Inc. 1st Interplus 356
International Paint, Inc. 2nd Interthane 670 HS
International Paint, Inc. 3rd Interthane 990 HS
Application Completed By: C&L Contracting P.O. Box 735
Gillett, WI 54124



TOTAL ESTIMATED QUANTITIES

BID ITEM #	BID ITEMS	UNIT	S ABUT	N ABUT	TOTAL
502.3200	PROTECTIVE SURFACE TREATMENT	SY	---	---	205
* 509.0301	PREPARATION DECKS TYPE 1	SY	---	---	60
* 509.0302	PREPARATION DECKS TYPE 2	SY	---	---	45
509.0500	CLEANING DECKS	SY	---	---	205
* 509.1500	CONCRETE SURFACE REPAIR	SF	---	---	10
* 509.2000	FULL-DEPTH DECK REPAIR	SY	---	---	1
509.2500	CONCRETE MASONRY OVERLAY DECKS	CY	---	---	12
517.1800.S	STRUCTURE REPAINTING RECYCLED ABRASIVE B-42-17	LS	---	---	1
517.4500.S	NEGATIVE PRESSURE CONTAINMENT AND COLLECTION OF WASTE MATERIALS B-42-17	LS	---	---	1
517.6001.S	PORTABLE DECONTAMINATION FACILITY	EACH	---	---	1
SPV.0060.01	CLEANING AND PAINTING PILING	EACH	14	14	28



LONGITUDINAL CONSTRUCTION JOINT DETAIL
REQUIRED AT LONGITUDINAL CONSTRUCTION JOINTS ALONG CENTERLINE
AND OUTSIDE EDGES OF OVERLAY.

NOTES:

- * QUANTITY LISTED IS TENTATIVE. CONTRACTOR SHALL COORDINATE THE FIELD IDENTIFICATION AND DETERMINATION OF ALL DECK REPAIR LOCATIONS WITH THE ENGINEER. DECK PREPARATION AND FULL-DEPTH DECK REPAIRS SHALL BE FILLED WITH "CONCRETE MASONRY OVERLAY DECKS".
 - * * CONCRETE SURFACE REPAIR REQ'D AS DESIGNATED BY THE ENGINEER. QUANTITY LISTED IS TENTATIVE. CONTRACTOR SHALL COORDINATE THE FIELD IDENTIFICATION AND DETERMINATION OF ALL SURFACE REPAIR LOCATIONS WITH THE ENGINEER.
- ALL ITEMS ARE CATEGORY 0020.

NO.	DATE	REVISION	BY
STATE OF WISCONSIN DEPARTMENT OF TRANSPORTATION			
STRUCTURE B-42-17			
DRAWN BY		DJG	PLANS CK'D. MVK
ELEVATION VIEW		SHEET 2 OF 2	