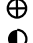

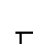

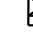


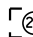






LEGEND

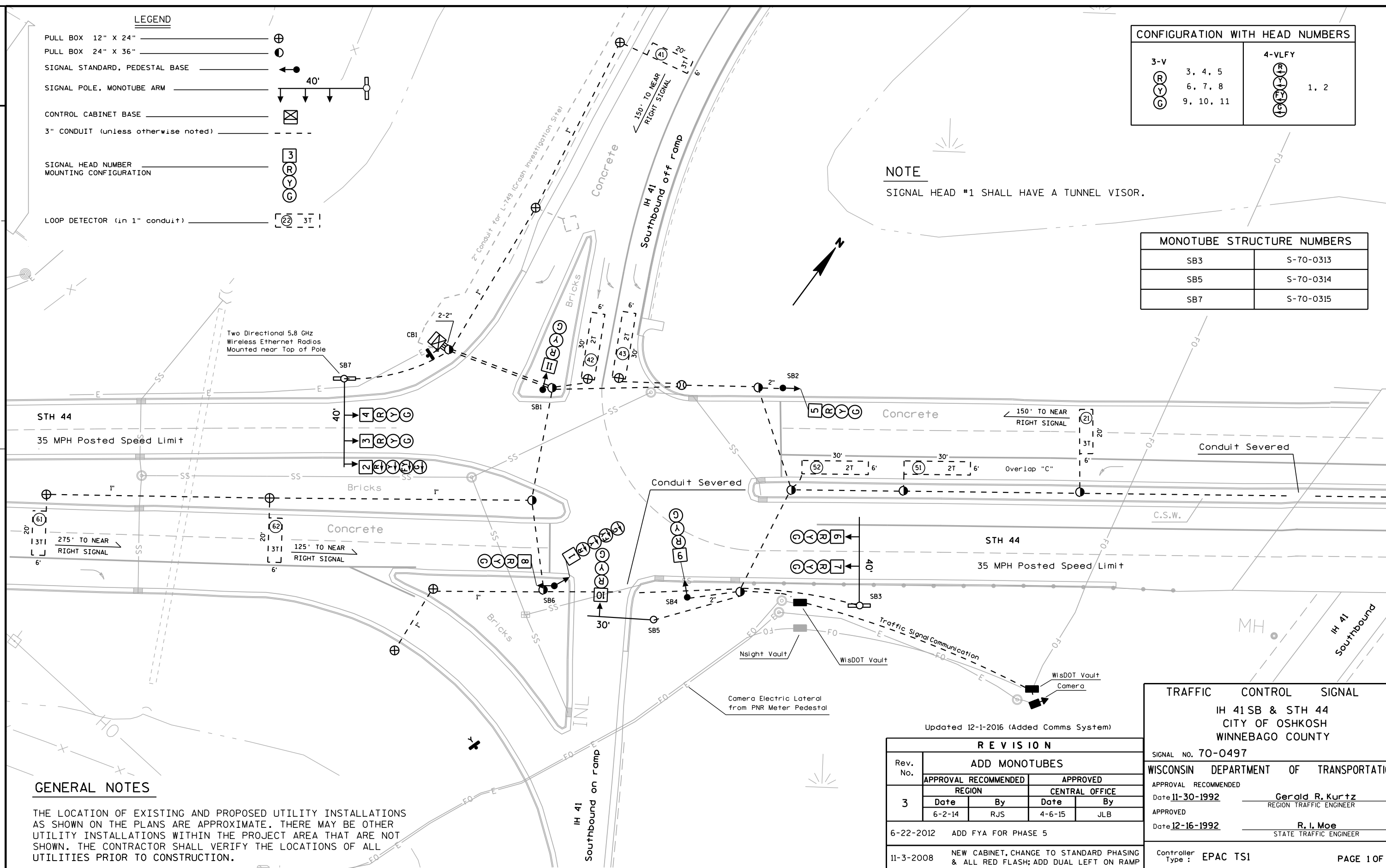
- PULL BOX 12" X 24" 
- PULL BOX 24" X 36" 
- SIGNAL STANDARD, PEDESTAL BASE 
- SIGNAL POLE, MONOTUBE ARM 
- CONTROL CABINET BASE 
- 3" CONDUIT (unless otherwise noted) 
- SIGNAL HEAD NUMBER MOUNTING CONFIGURATION 
- LOOP DETECTOR (in 1" conduit) 

CONFIGURATION WITH HEAD NUMBERS	
3-V	4-VLFY
 3, 4, 5	 1, 2
 6, 7, 8	
 9, 10, 11	

NOTE

SIGNAL HEAD #1 SHALL HAVE A TUNNEL VISOR.

MONOTUBE STRUCTURE NUMBERS	
SB3	S-70-0313
SB5	S-70-0314
SB7	S-70-0315



GENERAL NOTES

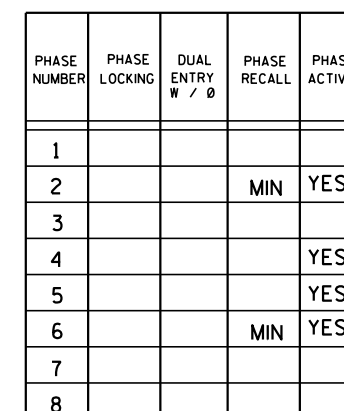
THE LOCATION OF EXISTING AND PROPOSED UTILITY INSTALLATIONS AS SHOWN ON THE PLANS ARE APPROXIMATE. THERE MAY BE OTHER UTILITY INSTALLATIONS WITHIN THE PROJECT AREA THAT ARE NOT SHOWN. THE CONTRACTOR SHALL VERIFY THE LOCATIONS OF ALL UTILITIES PRIOR TO CONSTRUCTION.

Updated 12-1-2016 (Added Comms System)

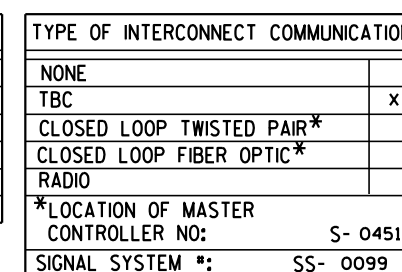
REVISION				
Rev. No.	ADD MONOTUBES			
	APPROVAL RECOMMENDED		APPROVED	
3	REGION		CENTRAL OFFICE	
	Date	By	Date	By
	6-2-14	RJS	4-6-15	JLB
6-22-2012	ADD FYA FOR PHASE 5			
11-3-2008	NEW CABINET, CHANGE TO STANDARD PHASING & ALL RED FLASH; ADD DUAL LEFT ON RAMP			

TRAFFIC CONTROL SIGNAL	
IH 41 SB & STH 44 CITY OF OSHKOSH WINNEBAGO COUNTY	
SIGNAL NO. 70-0497	
WISCONSIN DEPARTMENT OF TRANSPORTATION	
APPROVAL RECOMMENDED Date 11-30-1992	Gerald R. Kurtz REGION TRAFFIC ENGINEER
APPROVED Date 12-16-1992	R. I. Moe STATE TRAFFIC ENGINEER
Controller Type: EPAC TS1	PAGE 1 OF 2

CONTROLLER LOGIC



	Protected	Permissive
OL "A"		
OL "B"		
OL "C"	5	6
OL "D"		



TYPE OF PRE-EMPT	
NONE	
RAILROAD	
EMERGENCY VEHICLE	
GTT	
TOMAR	
HARDWIRE	
3M	
LIFT BRIDGE	
QUEUE DETECTOR	

TYPE OF LIGHTING	
BY OTHER AGENCY	
IN TRAFFIC SIGNAL CABINET	
IN SEPARATE DOT LIGHTING CABINET	
NONE (due to airport)	

GENERAL NOTES:

1. ANY ACTUATED PHASE FOR WHICH THERE IS NO CALL SHALL BE SKIPPED.
2. WHEN ONE PHASE IS ON ALONE, ANY NONCONFLICTING PHASE MAY START TIMING CONCURRENTLY WITHOUT A CLEARANCE INTERVAL.
(SEE CHART 1 AT LEFT.)
3. IF ANY OPPOSING THRU PHASES ARE TIMING CONCURRENTLY, THEY SHALL TERMINATE TOGETHER DUE TO PERMISSIVE LEFT TURN CONFLICT.
4. PROVIDE FOR HAND CONTROL.

Updated 12-1-2016 (Added Comms System)

USH 41 (SB) & STH 44
CITY OF OSHKOSH
WINNEBAGO COUNTY

SIGNAL NO. 70-0497

CONTROLLER TYPE: EPAC TS1

DATE: 4-6-2015

PAGE NO. 2 OF 2

PROJECT NO: 3700-30-02

HWY: IH 41

COUNTY: WINNEBAGO

SEQUENCE OF OPERATIONS S70-0497

SHEET

TE