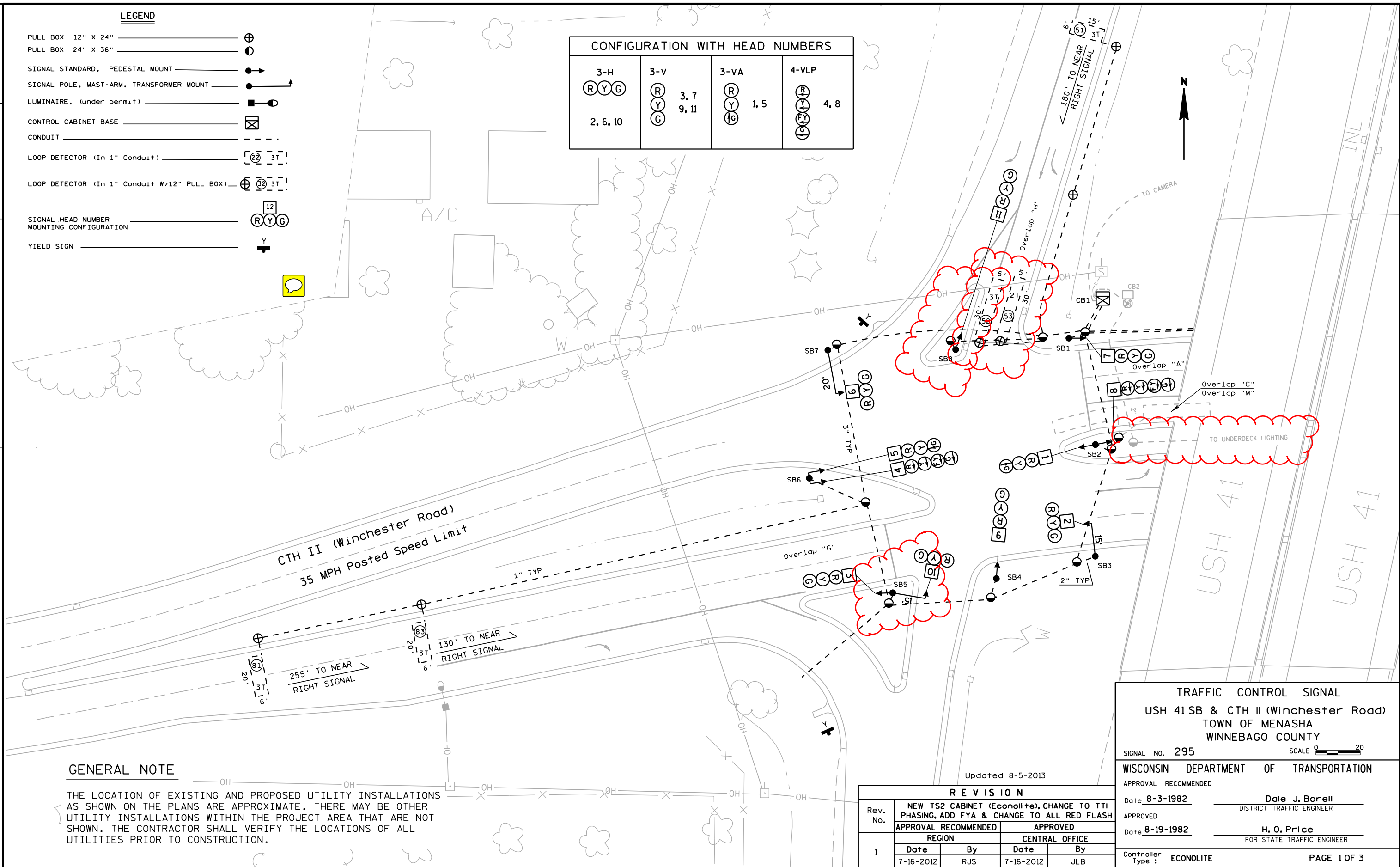


LEGEND

- PULL BOX 12" X 24"
- PULL BOX 24" X 36"
- SIGNAL STANDARD, PEDESTAL MOUNT
- SIGNAL POLE, MAST-ARM, TRANSFORMER MOUNT
- LUMINAIRE, (under permit)
- CONTROL CABINET BASE
- CONDUIT
- LOOP DETECTOR (In 1" Conduit)
- LOOP DETECTOR (In 1" Conduit W/12" PULL BOX)
- SIGNAL HEAD NUMBER MOUNTING CONFIGURATION
- YIELD SIGN

CONFIGURATION WITH HEAD NUMBERS			
3-H 	3-V 	3-VA 	4-VLP
2, 6, 10	3, 7 9, 11	1, 5	4, 8



GENERAL NOTE

THE LOCATION OF EXISTING AND PROPOSED UTILITY INSTALLATIONS AS SHOWN ON THE PLANS ARE APPROXIMATE. THERE MAY BE OTHER UTILITY INSTALLATIONS WITHIN THE PROJECT AREA THAT ARE NOT SHOWN. THE CONTRACTOR SHALL VERIFY THE LOCATIONS OF ALL UTILITIES PRIOR TO CONSTRUCTION.

TRAFFIC CONTROL SIGNAL
USH 41 SB & CTH II (Winchester Road)
TOWN OF MENASHA
WINNEBAGO COUNTY

SIGNAL NO. 295

WISCONSIN DEPARTMENT OF TRANSPORTATION

APPROVAL RECOMMENDED
Date 8-3-1982
APPROVED
Date 8-19-1982

Controller Type: ECONOLITE

Updated 8-5-2013






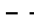
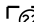


REVISION
Rev. No. 1
NEW TS2 CABINET (Econolite), CHANGE TO TTI PHASING, ADD FYA & CHANGE TO ALL RED FLASH
APPROVAL RECOMMENDED
REGION
Date 7-16-2012
By RJS
APPROVED
CENTRAL OFFICE
Date 7-16-2012
By JLB

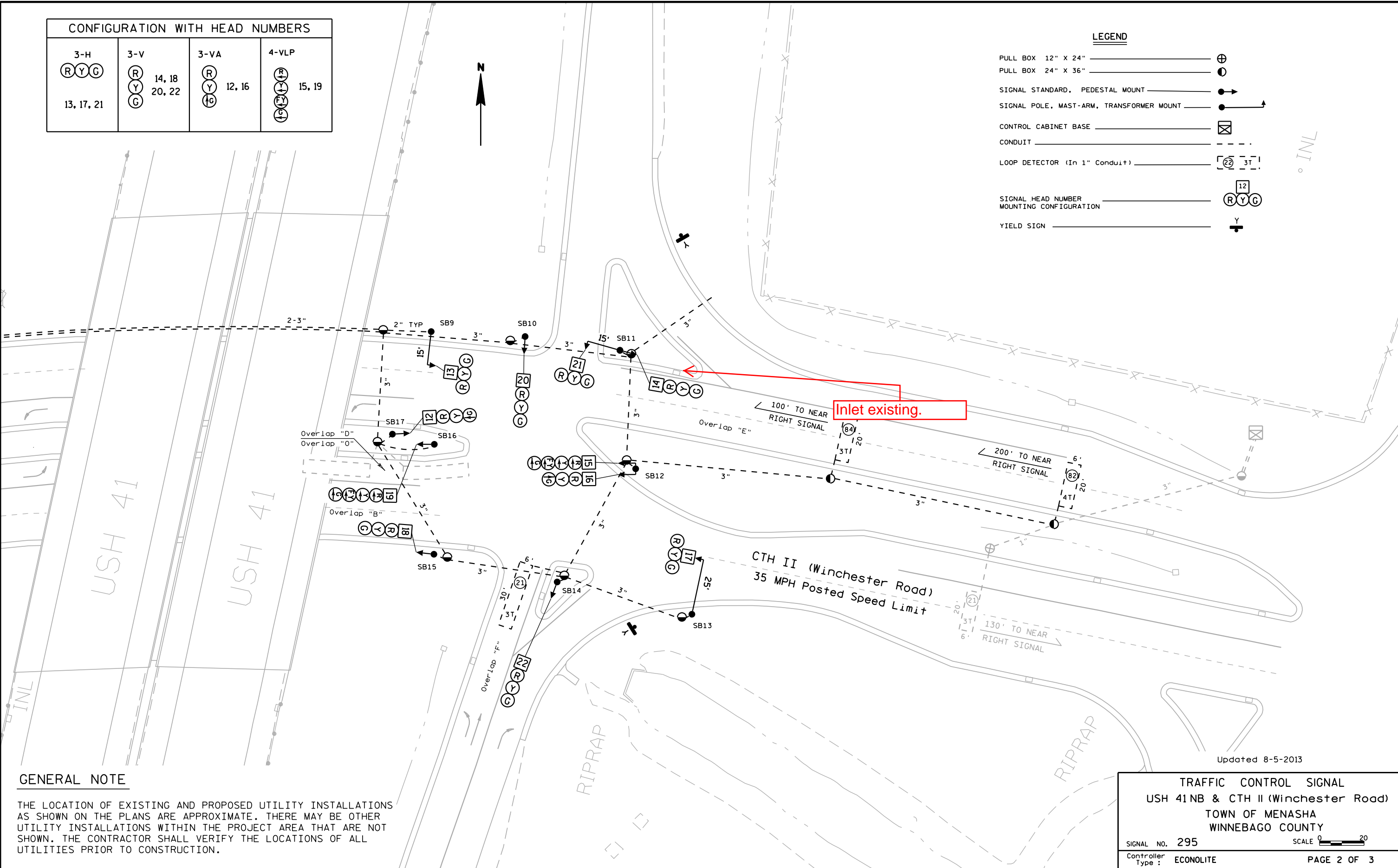
Dale J. Borell
DISTRICT TRAFFIC ENGINEER
H. O. Price
FOR STATE TRAFFIC ENGINEER

PAGE 1 OF 3

CONFIGURATION WITH HEAD NUMBERS			
3-H <div><div>R</div><div>Y</div><div>G</div></div> 13, 17, 21	3-V <div><div>R</div><div>Y</div><div>G</div></div> 14, 18 20, 22	3-VA <div><div>R</div><div>Y</div><div>G</div></div> 12, 16	4-VLP <div><div>R</div><div>Y</div><div>G</div><div>Y</div><div>G</div></div> 15, 19

LEGEND

- PULL BOX 12" X 24" 
- PULL BOX 24" X 36" 
- SIGNAL STANDARD, PEDESTAL MOUNT 
- SIGNAL POLE, MAST-ARM, TRANSFORMER MOUNT 
- CONTROL CABINET BASE 
- CONDUIT 
- LOOP DETECTOR (In 1" Conduit) 
- SIGNAL HEAD NUMBER
MOUNTING CONFIGURATION 
- YIELD SIGN 



GENERAL NOTE

THE LOCATION OF EXISTING AND PROPOSED UTILITY INSTALLATIONS AS SHOWN ON THE PLANS ARE APPROXIMATE. THERE MAY BE OTHER UTILITY INSTALLATIONS WITHIN THE PROJECT AREA THAT ARE NOT SHOWN. THE CONTRACTOR SHALL VERIFY THE LOCATIONS OF ALL UTILITIES PRIOR TO CONSTRUCTION.

Updated 8-5-2013

TRAFFIC CONTROL SIGNAL
USH 41NB & CTH II (Winchester Road)
TOWN OF MENASHA
WINNEBAGO COUNTY

SIGNAL NO. 295
Controller Type : ECONOLITE

SCALE 0 20'
PAGE 2 OF 3