

MONOTUBE STRUCTURE NUMBERS	
SB2	S-59-0052
SB5	S-59-0053
SB9	S-59-0054

GENERAL NOTES

THE LOCATION OF EXISTING AND PROPOSED UTILITY INSTALLATIONS AS SHOWN ON THE PLANS ARE APPROXIMATE. THERE MAY BE OTHER UTILITY INSTALLATIONS WITHIN THE PROJECT AREA THAT ARE NOT SHOWN. THE CONTRACTOR SHALL VERIFY THE LOCATIONS OF ALL UTILITIES PRIOR TO CONSTRUCTION.

CONFIGURATION WITH HEAD NUMBERS

3-V
R
Y
G

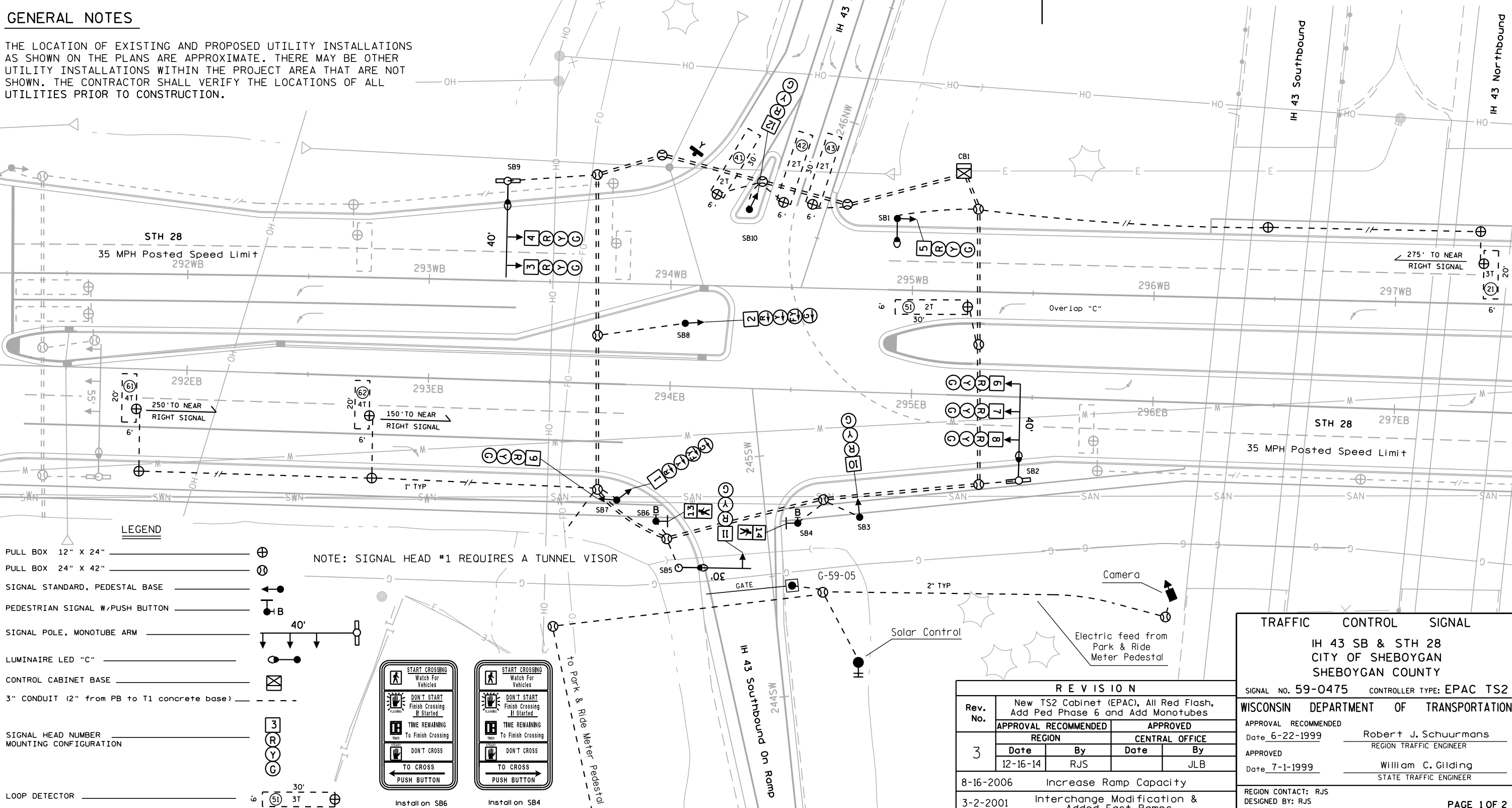
3, 4, 5
6, 7, 8
9, 10
11, 12

4-VLFY
R
Y
G

1, 2

1-P
P

13, 14



PROJECT NO: 4640-05-71

HWY: STH 28

COUNTY: SHEBOYGAN

TRAFFIC CONTROL SIGNAL S59-0475

SHEET

E

	HEAD NUMBERS	FLASH
Ø1		
Ø2	3, 4, 5	R
Ø3		
Ø4	10, 11, 12	R
Ø5	1, 2	-
Ø6	6, 7, 8, 9	R
Ø7		
Ø8		
Ø2P		
Ø4P		
Ø6P	13, 14	-
Ø8P		
OLA		
OLB		
OLC	1, 2	R
OLD		

RING 1

NOT USED	←
Ø1	Ø2

NOT USED	↓
Ø3	Ø4

RING 2

↙	↘ OL "C"
Ø5	Ø6

NOT USED	NOT USED
Ø7	Ø8

BARRIER



CONTROLLER LOGIC

PHASE NUMBER	PHASE LOCKING	DUAL ENTRY W / Ø	PHASE RECALL	PHASE ACTIVE
1				
2			MIN	YES
3				
4				YES
5				YES
6			MIN	YES
7				
8				

OVERLAP SPECIAL

	Protected	Permissive
OL "A"		
OL "B"		
OL "C"	5	6
OL "D"		

TYPE OF INTERCONNECT/COMMUNICATION	
CELL MODEM	
CLOSED LOOP	
TWISTED PAIR*	
FIBER OPTIC*	
FIBER OPTIC (ETHERNET)	
RADIO	

TYPE OF COORDINATION	
NONE	
TBC	x
TRAFFIC RESPONSIVE	
ADAPTIVE	
*LOCATION OF MASTER CONTROLLER NO: S59-2006	
SIGNAL SYSTEM #: SS-0080	

TYPE OF LIGHTING	
BY OTHER AGENCY	
IN TRAFFIC SIGNAL CABINET	x
IN SEPARATE DOT LIGHTING CABINET	

TYPE OF PRE-EMPT	
NONE	x
RAILROAD	
EMERGENCY VEHICLE	
GTT	
TOMAR	
HARDWIRE	
3M	
LIFT BRIDGE	
QUEUE DETECTOR	

DETECTOR LOGIC

RACK # 1

DETECTOR CHANNEL	3	1	7	5	11	9	15	13
PLAN LOOP DETECTOR *(S)	21	41	42	51	61			
ASSIGNED PHASE	2	4	4	5	6			
OPERATION MODE	Veh	Veh	Veh	Veh	Veh			
SWITCH TO PHASE								
EXTEND								
DELAY		Yes		Yes				
DETECTOR CHANNEL	4	2	8	6	12	10	16	14
PLAN LOOP DETECTOR *(S)			43		61			
ASSIGNED PHASE			4		6			
OPERATION MODE			Veh		Veh			
SWITCH TO PHASE								
EXTEND								
DELAY								

RACK # 2

DETECTOR CHANNEL	19	17	23	21	27	25	31	29
PLAN LOOP DETECTOR *(S)								
ASSIGNED PHASE								
OPERATION MODE								
SWITCH TO PHASE								
EXTEND								
DELAY								
DETECTOR CHANNEL	20	18	24	22	28	26	32	30
PLAN LOOP DETECTOR *(S)								
ASSIGNED PHASE								
OPERATION MODE								
SWITCH TO PHASE								
EXTEND								
DELAY								

GENERAL NOTES:

1. PROVIDE FOR HAND CONTROL.

Revision 3

IH 43 SB & STH 28 CITY OF SHEBOYGAN SHEBOYGAN COUNTY	
SIGNAL NO.	59-0475
CONTROLLER TYPE:	EPAC TS2
DATE: 12-16-2014	PAGE NO. 2 OF 2