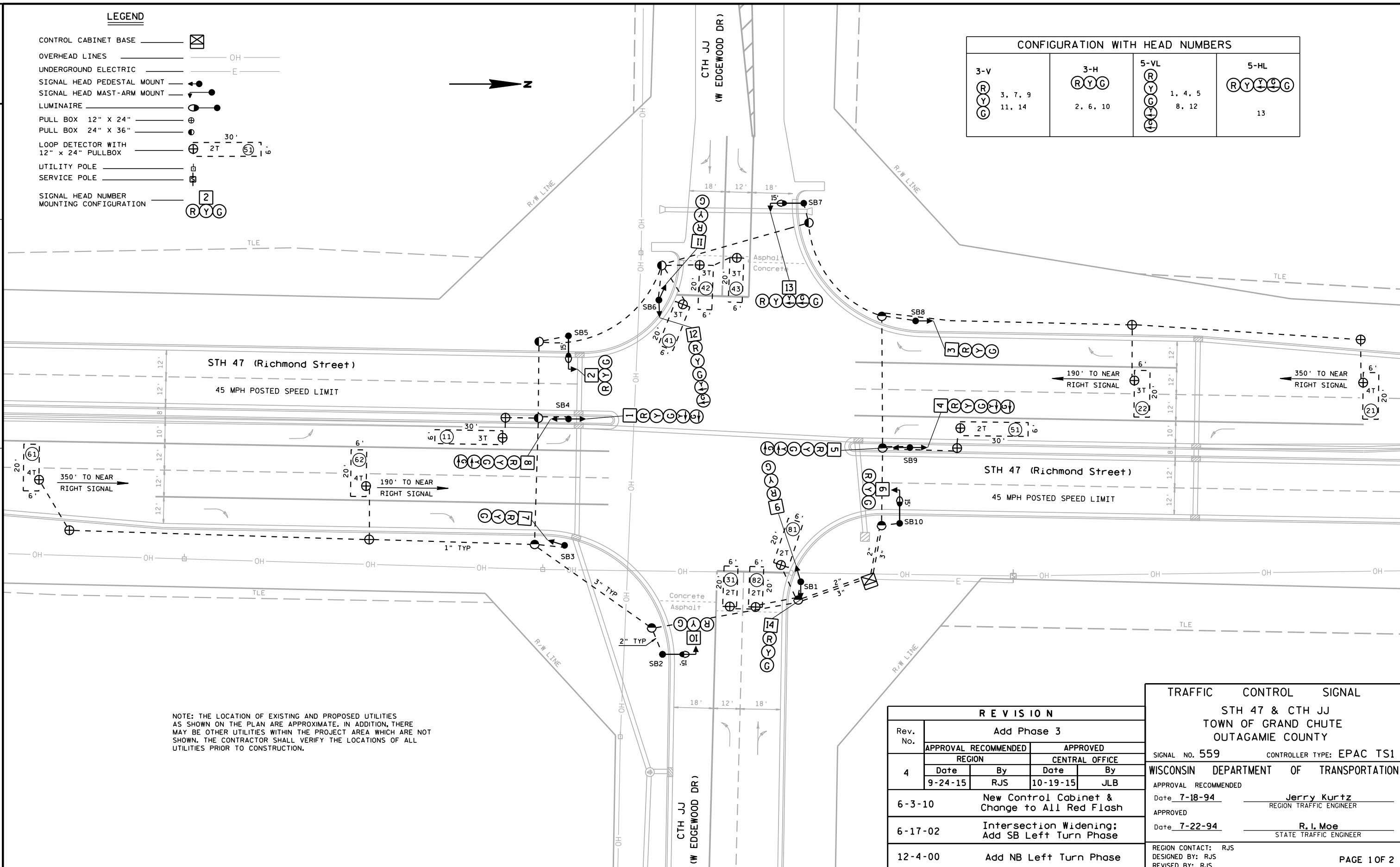


LEGEND

- CONTROL CABINET BASE
- OVERHEAD LINES
- UNDERGROUND ELECTRIC
- SIGNAL HEAD PEDESTAL MOUNT
- SIGNAL HEAD MAST-ARM MOUNT
- LUMINAIRE
- PULL BOX 12" X 24"
- PULL BOX 24" X 36"
- LOOP DETECTOR WITH 12" X 24" PULLBOX
- UTILITY POLE
- SERVICE POLE
- SIGNAL HEAD NUMBER MOUNTING CONFIGURATION

CONFIGURATION WITH HEAD NUMBERS

3-V	3-H	5-VL	5-HL
<div><div>R</div><div>Y</div><div>G</div></div> <div>3, 7, 9</div> <div>11, 14</div>	<div><div>R</div><div>Y</div><div>G</div></div> <div>2, 6, 10</div>	<div><div>R</div><div>Y</div><div>G</div><div>Y</div><div>G</div><div>G</div></div> <div>1, 4, 5</div> <div>8, 12</div>	<div><div>R</div><div>Y</div><div>G</div><div>Y</div><div>G</div><div>G</div></div> <div>13</div>

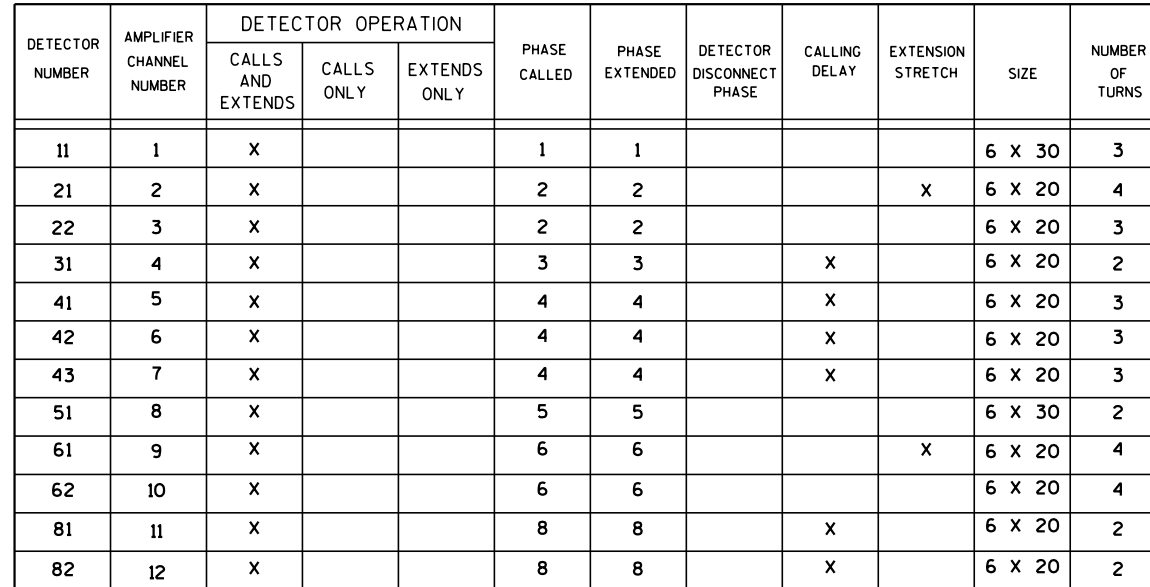


NOTE: THE LOCATION OF EXISTING AND PROPOSED UTILITIES AS SHOWN ON THE PLAN ARE APPROXIMATE. IN ADDITION, THERE MAY BE OTHER UTILITIES WITHIN THE PROJECT AREA WHICH ARE NOT SHOWN. THE CONTRACTOR SHALL VERIFY THE LOCATIONS OF ALL UTILITIES PRIOR TO CONSTRUCTION.

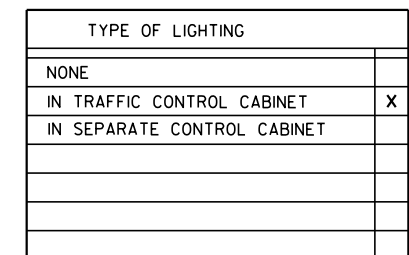
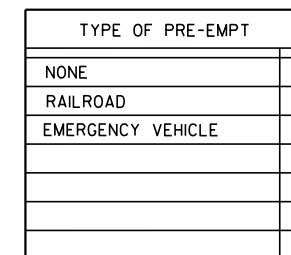
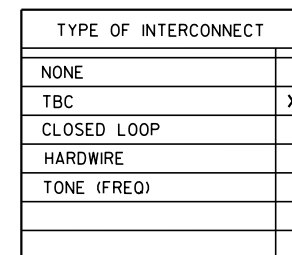
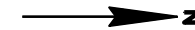
R E V I S I O N				
4	Add Phase 3			
	APPROVAL RECOMMENDED		APPROVED	
	REGION		CENTRAL OFFICE	
	Date	By	Date	By
	9-24-15	RJS	10-19-15	JLB
6-3-10	New Control Cabinet & Change to All Red Flash			
6-17-02	Intersection Widening; Add SB Left Turn Phase			
12-4-00	Add NB Left Turn Phase			

TRAFFIC CONTROL SIGNAL	
STH 47 & CTH JJ TOWN OF GRAND CHUTE OUTAGAMIE COUNTY	
SIGNAL NO. 559	CONTROLLER TYPE: EPAC TS1
WISCONSIN DEPARTMENT OF TRANSPORTATION	
APPROVAL RECOMMENDED	
Date 7-18-94	Jerry Kurtz REGION TRAFFIC ENGINEER
APPROVED	
Date 7-22-94	R. L. Moe STATE TRAFFIC ENGINEER
REGION CONTACT: RJS	
DESIGNED BY: RJS	
REVISED BY: RJS	

DETECTOR LOGIC



PHASE NUMBER	PHASE LOCKING	DUAL ENTRY W / Ø	PHASE RECALL	PHASE ACTIVE
1				YES
2			MIN	YES
3				YES
4		8		YES
5				YES
6			MIN	YES
7				
8		4		YES



** CLEARANCE TO A PHASE IN CONFLICT WITH THIS PHASE ON (SEE CHART 1 BELOW)

PHASE ON	NONCONFLICTING PHASE ALLOWED TO TIME CONCURRENTLY	PHASES IN CONFLICT WITH PHASE ON
Ø1	5 OR 6	2, 3, 4, 8
Ø2	5 OR 6	1, 3, 4, 8
Ø3	8	1, 2, 4, 5, 6
Ø4	8	1, 2, 3, 5, 6
Ø5	1 OR 2	3, 4, 6, 8
Ø6	1 OR 2	3, 4, 5, 8
Ø7		
Ø8	4	1, 2, 3, 5, 6

1. WHEN OPPOSING THRU PHASES ARE TIMING CONCURRENTLY, THEY SHALL TERMINATE TOGETHER DUE TO PERMISSIVE LEFT TURN CONFLICT
2. ANY ACTUATED PHASE FOR WHICH THERE IS NO CALL SHALL BE SKIPPED.
3. WHEN ONE PHASE IS ON ALONE, ANY NON-CONFLICTING PHASE MAY START TIMING CONCURRENTLY WITHOUT A CLEARANCE INTERVAL. (SEE CHART 1 AT LEFT)
4. PROVIDE FOR HAND CONTROL

TRAFFIC CONTROL SIGNALS

STH 47 & CTH JJ
TOWN OF GRAND CHUTE
OUTAGAMIE COUNTY

SIGNAL NO.	559
------------	-----

CONTROLLER: EPAC TS1

DATE: 10-19-2015

SHEET NO. 2 OF 2