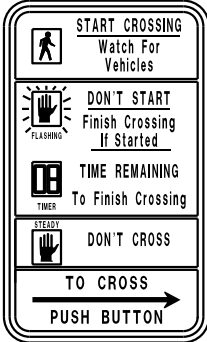


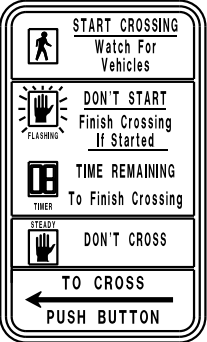
GENERAL NOTE

THE LOCATION OF EXISTING AND PROPOSED UTILITY INSTALLATIONS AS SHOWN ON THE PLANS ARE APPROXIMATE. THERE MAY BE OTHER UTILITY INSTALLATIONS WITHIN THE PROJECT AREA THAT ARE NOT SHOWN. THE CONTRACTOR SHALL VERIFY THE LOCATIONS OF ALL UTILITIES PRIOR TO CONSTRUCTION.

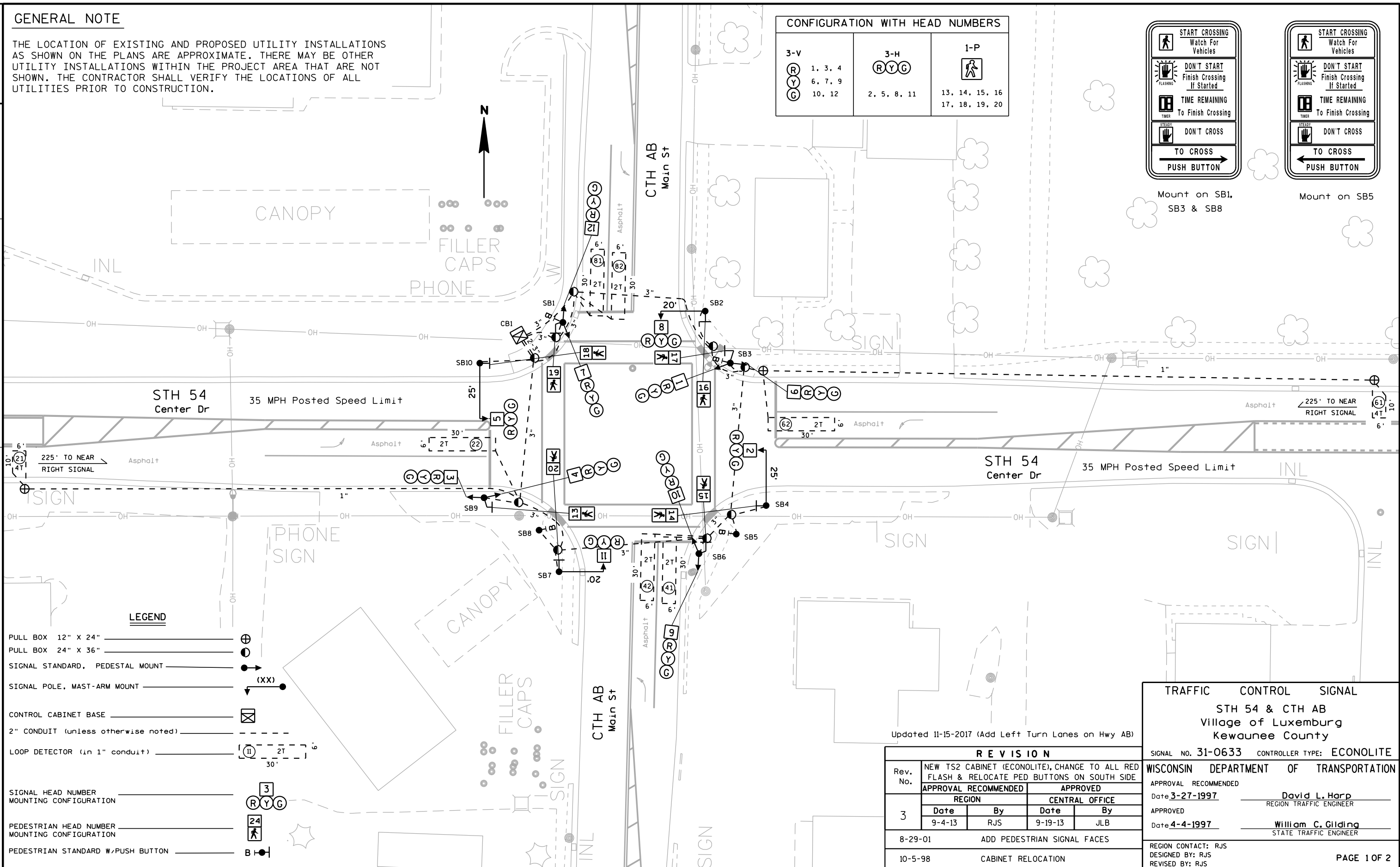
CONFIGURATION WITH HEAD NUMBERS		
3-V	3-H	1-P
<div><div>R</div><div>Y</div><div>G</div></div>	<div><div>R</div><div>Y</div><div>G</div></div>	<div><div>P</div></div>
1, 3, 4 6, 7, 9 10, 12	2, 5, 8, 11	13, 14, 15, 16 17, 18, 19, 20



Mount on SB1, SB3 & SB8



Mount on SB5

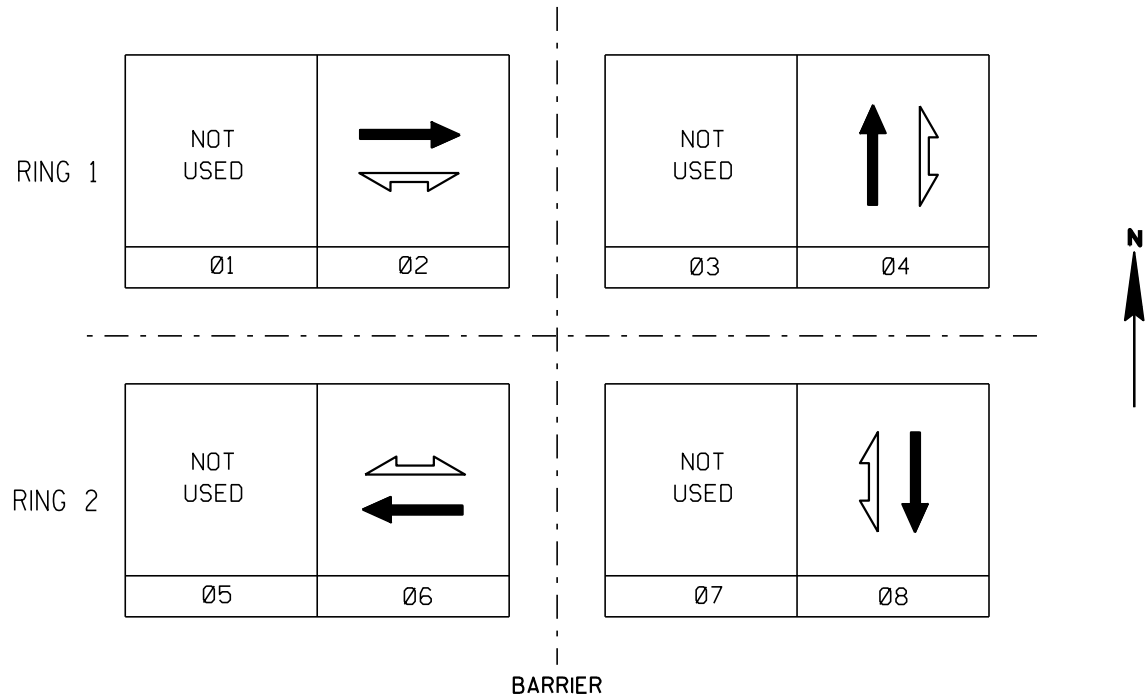


Updated 11-15-2017 (Add Left Turn Lanes on Hwy AB)

R E V I S I O N			
Rev. No.	NEW TS2 CABINET (ECONOLITE), CHANGE TO ALL RED FLASH & RELOCATE PED BUTTONS ON SOUTH SIDE		
3	APPROVAL RECOMMENDED		APPROVED
	REGION		CENTRAL OFFICE
	Date	By	Date
8-29-01		ADD PEDESTRIAN SIGNAL FACES	
10-5-98		CABINET RELOCATION	

TRAFFIC CONTROL SIGNAL	
STH 54 & CTH AB Village of Luxemburg Kewaunee County	
SIGNAL NO. 31-0633	CONTROLLER TYPE: ECONOLITE
WISCONSIN DEPARTMENT OF TRANSPORTATION	
APPROVAL RECOMMENDED	APPROVED
Date 3-27-1997	David L. Harp REGION TRAFFIC ENGINEER
APPROVED	APPROVED
Date 4-4-1997	William C. Gilding STATE TRAFFIC ENGINEER
REGION CONTACT: RJS DESIGNED BY: RJS REVISED BY: RJS	

	HEAD NUMBERS	FLASH
Ø1		
Ø2	1, 2, 3	R
Ø3		
Ø4	7, 8, 9	R
Ø5		
Ø6	4, 5, 6	R
Ø7		
Ø8	10, 11, 12	R
Ø2P	13, 14	-
Ø4P	15, 16	-
Ø6P	17, 18	-
Ø8P	19, 20	-
OLE		
OLF		
OLG		
OLH		



PHASE NUMBER	PHASE LOCKING	DUAL ENTRY W / Ø	PHASE RECALL	PHASE ACTIVE
1				
2			MIN/PED	x
3				
4		8		x
5				
6			MIN/PED	x
7				
8		4		x

TYPE OF INTERCONNECT/COMMUNICATION	
CELL MODEM	
CLOSED LOOP	
TWISTED PAIR*	
FIBER OPTIC*	
FIBER OPTIC (ETHERNET)	
RADIO	

TYPE OF COORDINATION	
NONE	x
TBC	
TRAFFIC RESPONSIVE	
ADAPTIVE	
*LOCATION OF MASTER CONTROLLER NO:	S-000
SIGNAL SYSTEM #:	SS-0000

TYPE OF LIGHTING	
BY OTHER AGENCY	x
IN TRAFFIC SIGNAL CABINET	
IN SEPARATE DOT LIGHTING CABINET	

TYPE OF PRE-EMPT	
NONE	x
RAILROAD	
EMERGENCY VEHICLE	
GTT	
TOMAR	
HARDWIRE	
3M	
LIFT BRIDGE	
QUEUE DETECTOR	

DETECTOR LOGIC

RACK # 1								
DETECTOR CHANNEL	3	1	7	5	11	9	15	13
PLAN LOOP DETECTOR *(S)	21	41	61	81				
ASSIGNED PHASE	2	4	6	8				
OPERATION MODE	Veh	Veh	Veh	Veh				
SWITCH TO PHASE								
EXTEND								
DELAY		Yes		Yes				
DETECTOR CHANNEL	4	2	8	6	12	10	16	14
PLAN LOOP DETECTOR *(S)	22	42	62	82				
ASSIGNED PHASE	2	4	6	8				
OPERATION MODE	Veh	Veh	Veh	Veh				
SWITCH TO PHASE								
EXTEND								
DELAY		Yes		Yes				

RACK # 2								
DETECTOR CHANNEL	19	17	23	21	27	25	31	29
PLAN LOOP DETECTOR *(S)								
ASSIGNED PHASE								
OPERATION MODE								
SWITCH TO PHASE								
EXTEND								
DELAY								
DETECTOR CHANNEL	20	18	24	22	28	26	32	30
PLAN LOOP DETECTOR *(S)								
ASSIGNED PHASE								
OPERATION MODE								
SWITCH TO PHASE								
EXTEND								
DELAY								

GENERAL NOTES:

1. PROVIDE FOR HAND CONTROL.

Updated 11-15-2017

STH 54 & CTH AB
Village of Luxemburg
Kewaunee County

SIGNAL NO.	31-0633
CABINET: TS2	CONTROLLER: ECONOLITE
DATE: 9-19-2013	PAGE NO. 2 OF 2