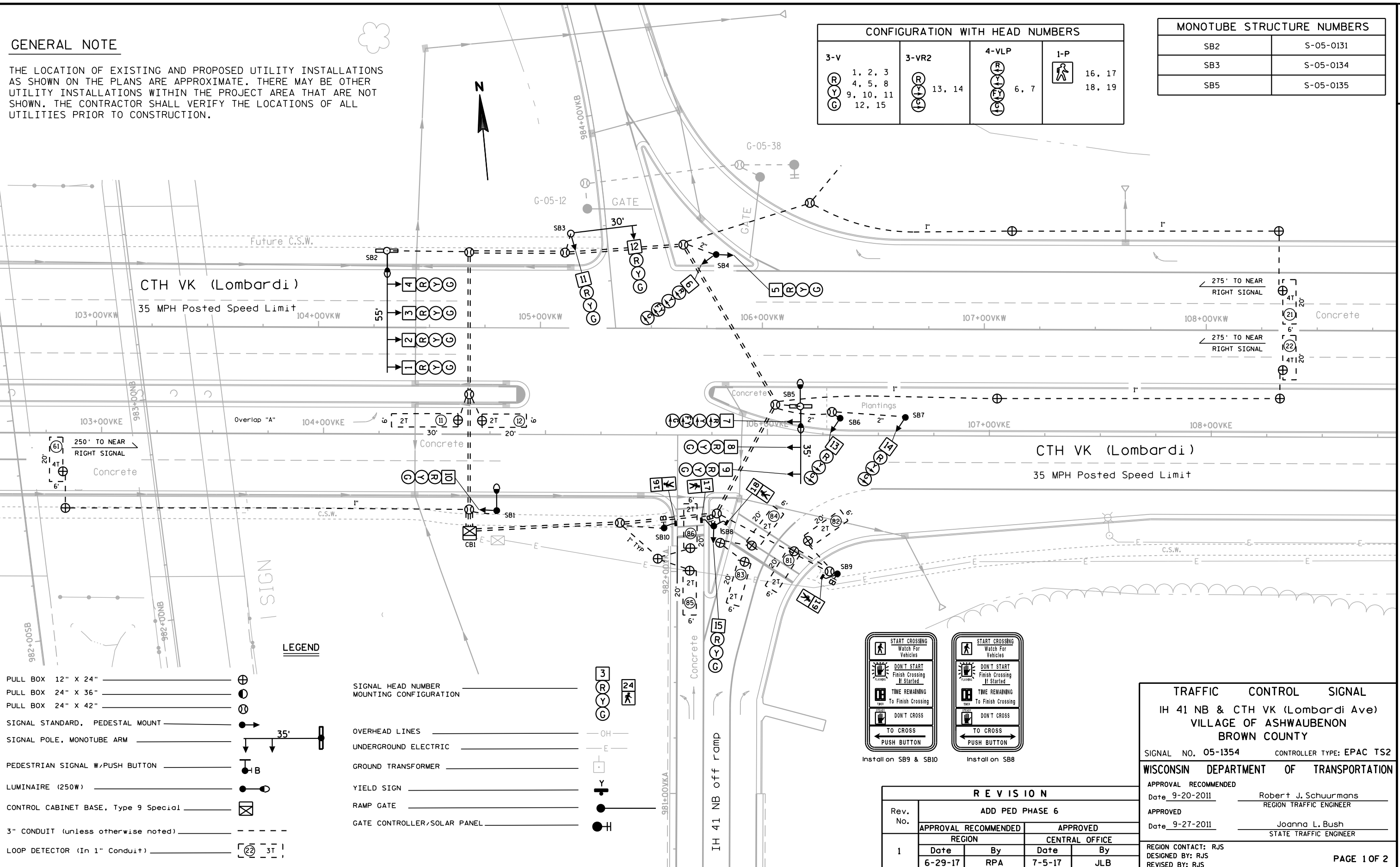
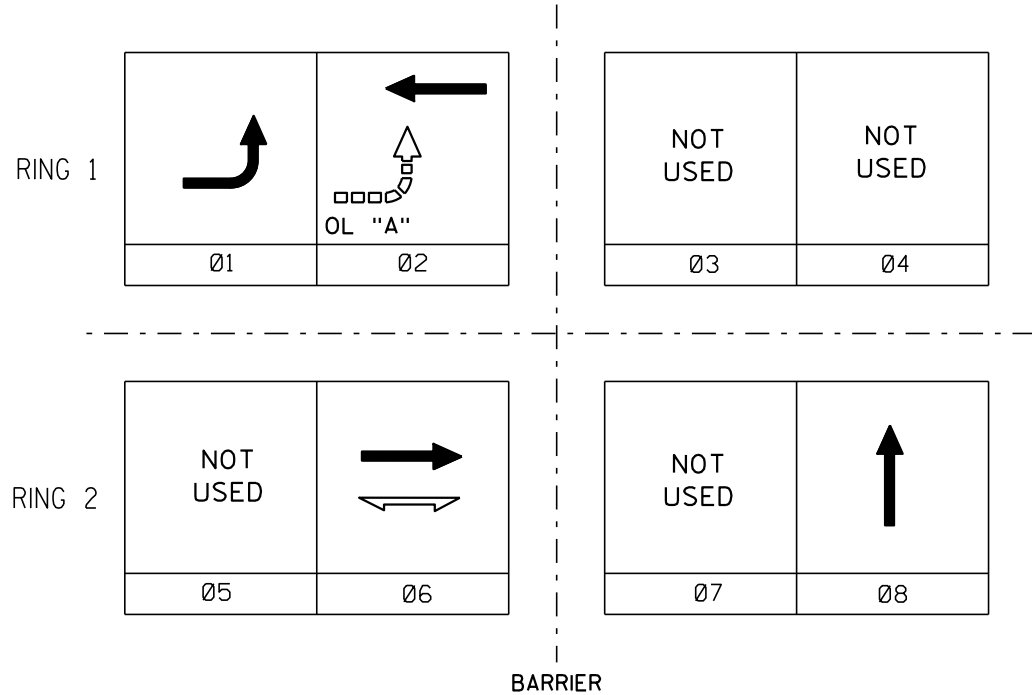


## GENERAL NOTE

THE LOCATION OF EXISTING AND PROPOSED UTILITY INSTALLATIONS AS SHOWN ON THE PLANS ARE APPROXIMATE. THERE MAY BE OTHER UTILITY INSTALLATIONS WITHIN THE PROJECT AREA THAT ARE NOT SHOWN. THE CONTRACTOR SHALL VERIFY THE LOCATIONS OF ALL UTILITIES PRIOR TO CONSTRUCTION.



	HEAD NUMBERS	FLASH
Ø1	6, 7	-
Ø2	1, 2, 3, 4, 5	R
Ø3		
Ø4		
Ø5		
Ø6	8, 9, 10	R
Ø7		
Ø8	11, 12, 13, 14, 15	R
Ø2P		
Ø4P		
Ø6P	16, 17, 18, 19	-
Ø8P		
OLA	6, 7	R
OLB		
OLC		
OLD		



PHASE NUMBER	PHASE LOCKING	DUAL ENTRY W / Ø	PHASE RECALL	PHASE ACTIVE
1				x
2			MIN	x
3				
4				
5				
6			MIN	x
7				
8				x

TYPE OF INTERCONNECT/COMMUNICATION	
CELL MODEM	x
CLOSED LOOP	
TWISTED PAIR*	
FIBER OPTIC*	
FIBER OPTIC (ETHERNET)	
RADIO	

TYPE OF COORDINATION	
NONE	
TBC	x
TRAFFIC RESPONSIVE	
ADAPTIVE	
*LOCATION OF MASTER CONTROLLER NO:	S-1354
SIGNAL SYSTEM #:	SS-0160

	Protected	Permissive
OL "A"	1	2
OL "B"		
OL "C"		
OL "D"		

TYPE OF LIGHTING	
BY OTHER AGENCY	
IN TRAFFIC SIGNAL CABINET	x
IN SEPARATE DOT LIGHTING CABINET	

TYPE OF PRE-EMPT	
NONE	x
RAILROAD	
EMERGENCY VEHICLE	
GTT	
TOMAR	
HARDWIRE	
3M	
LIFT BRIDGE	
QUEUE DETECTOR	

DETECTOR LOGIC

RACK # 1							
DETECTOR CHANNEL	3	1	7	5	11	9	15
PLAN LOOP DETECTOR *(S)	11	21		61		86	84
ASSIGNED PHASE	1	2		6		8	8
OPERATION MODE	Veh	Veh		Veh		Veh	Veh
SWITCH TO PHASE							
EXTEND							
DELAY						Yes	Yes
DETECTOR CHANNEL	4	2	8	6	12	10	16
PLAN LOOP DETECTOR *(S)	12	22				85	83
ASSIGNED PHASE	1	2				8	8
OPERATION MODE	Veh	Veh				Veh	Veh
SWITCH TO PHASE							
EXTEND							
DELAY						Yes	Yes

RACK # 2							
DETECTOR CHANNEL	19	17	23	21	27	25	31
PLAN LOOP DETECTOR *(S)							
ASSIGNED PHASE							
OPERATION MODE							
SWITCH TO PHASE							
EXTEND							
DELAY							
DETECTOR CHANNEL	20	18	24	22	28	26	32
PLAN LOOP DETECTOR *(S)							
ASSIGNED PHASE							
OPERATION MODE							
SWITCH TO PHASE							
EXTEND							
DELAY							

GENERAL NOTES:

1. PROVIDE FOR HAND CONTROL.

Revision 1

IH 41NB & CTH VK (Lombardi Ave)  
VILLAGE OF ASHWAUBENON  
BROWN COUNTY

SIGNAL NO. 05-1354

CABINET: TS2 CONTROLLER: EPAC

DATE: 7-5-2017 PAGE NO. 2 OF 2