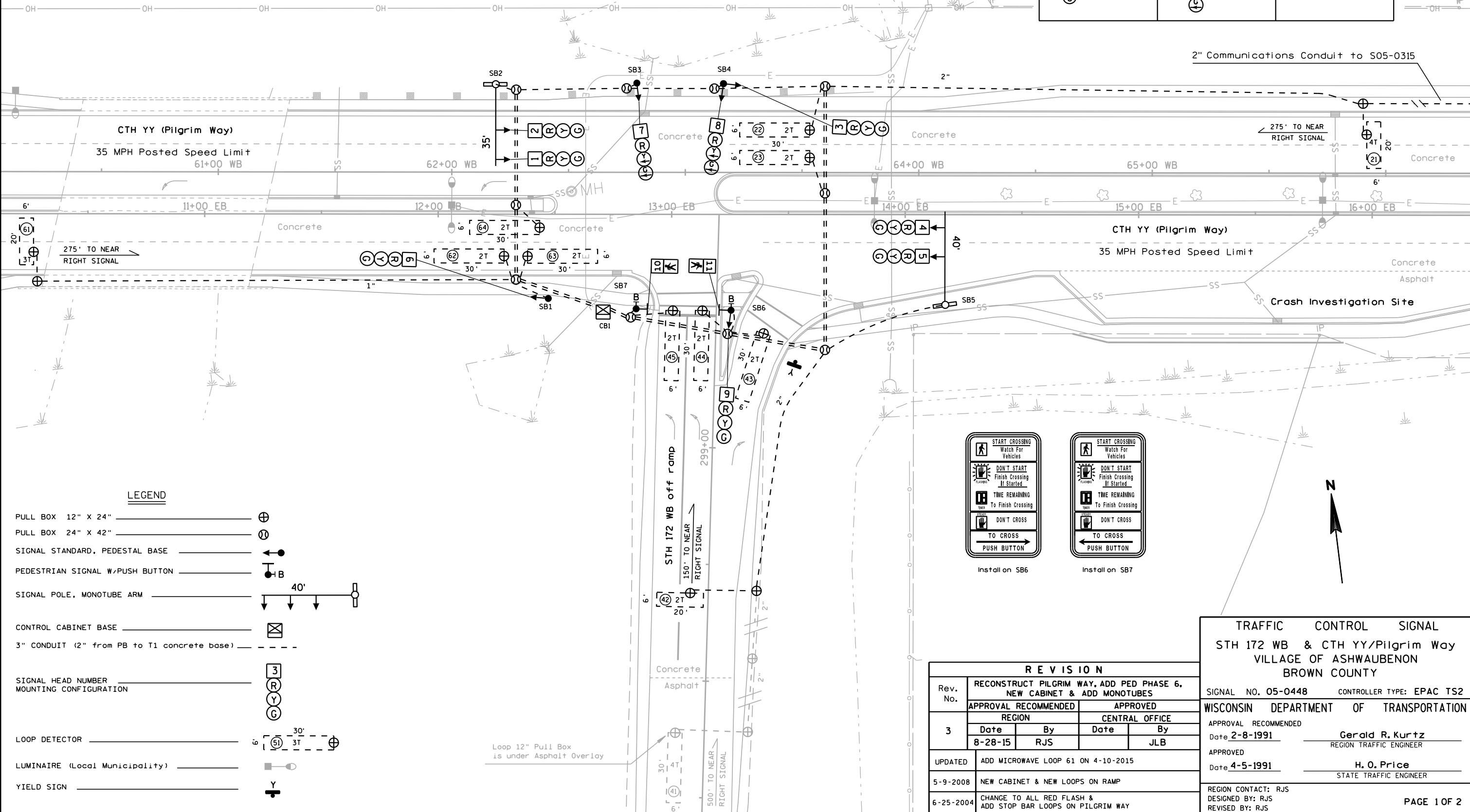


GENERAL NOTE

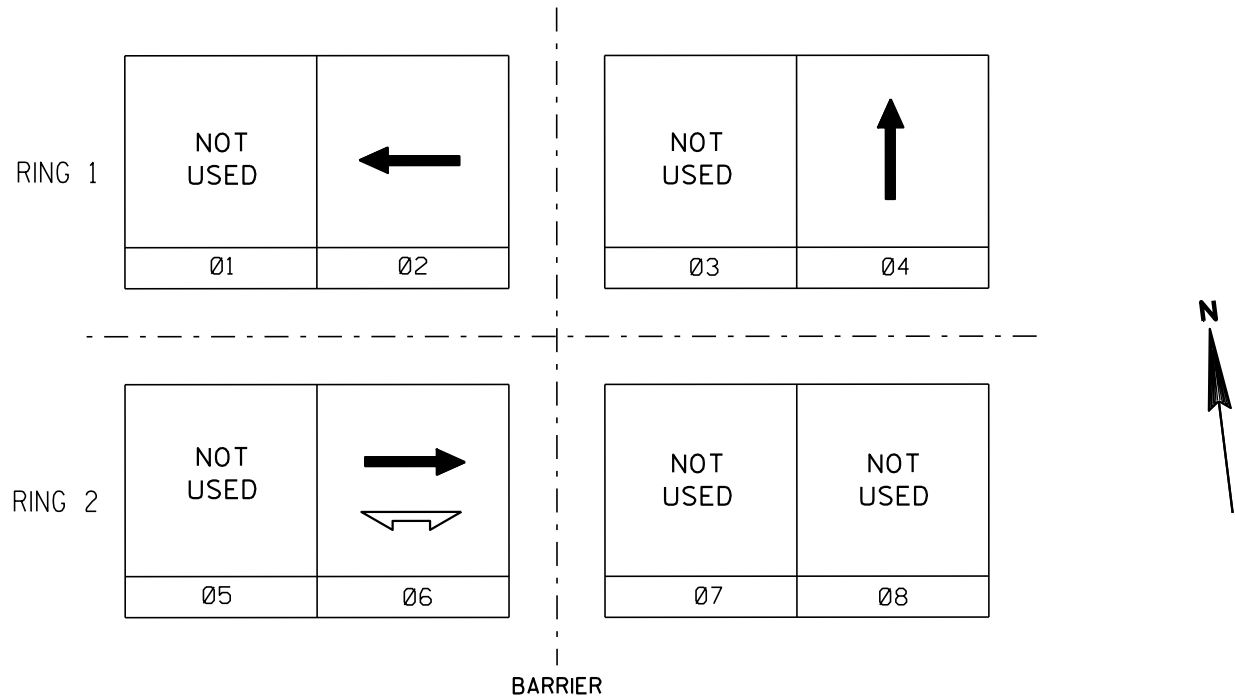
THE LOCATION OF EXISTING AND PROPOSED UTILITY INSTALLATIONS AS SHOWN ON THE PLANS ARE APPROXIMATE. THERE MAY BE OTHER UTILITY INSTALLATIONS WITHIN THE PROJECT AREA THAT ARE NOT SHOWN. THE CONTRACTOR SHALL VERIFY THE LOCATIONS OF ALL UTILITIES PRIOR TO CONSTRUCTION.

MONOTUBE STRUCTURE NUMBERS	
SB2	S-05-0390
SB5	S-05-0391

CONFIGURATION WITH HEAD NUMBERS		
3-V (R) (Y) (G)	1, 2, 3 4, 5 6, 9	3-VL2 (R) (Y) (G)
		1-P (P) (P)
		10, 11



	HEAD NUMBERS	FLASH
Ø1		
Ø2	1, 2, 3	R
Ø3		
Ø4	7, 8, 9	R
Ø5		
Ø6	4, 5, 6	R
Ø7		
Ø8		
Ø2P		
Ø4P		
Ø6P	10, 11	
Ø8P		
OLE		
OLF		
OLG		
OLH		



CONTROLLER LOGIC

PHASE NUMBER	PHASE LOCKING	DUAL ENTRY W / Ø	PHASE RECALL	PHASE ACTIVE
1				
2		6		x
3				
4			MIN	x
5				
6		2		x
7				
8				

TYPE OF INTERCONNECT/COMMUNICATION	
CELL MODEM	
CLOSED LOOP	
TWISTED PAIR*	
FIBER OPTIC*	
FIBER OPTIC (ETHERNET)	
RADIO	

TYPE OF COORDINATION	
NONE	
TBC	x
TRAFFIC RESPONSIVE	
ADAPTIVE	
*LOCATION OF MASTER CONTROLLER NO:	S-XXX
SIGNAL SYSTEM #:	SS-XXXX

TYPE OF LIGHTING	
BY OTHER AGENCY	x
IN TRAFFIC SIGNAL CABINET	
IN SEPARATE DOT LIGHTING CABINET	

TYPE OF PRE-EMPT	
NONE	
RAILROAD	
EMERGENCY VEHICLE	
GTT	
TOMAR	
HARDWIRE	
3M	
LIFT BRIDGE	
QUEUE DETECTOR	x

GENERAL NOTES:

1. PROVIDE FOR HAND CONTROL
2. LOOP 41 IS A PREEMPT LOOP

DETECTOR LOGIC

RACK # 1								
DETECTOR CHANNEL	3	1	7	5	11	9	15	13
PLAN LOOP DETECTOR *(S)	21	22	41	42	44			
ASSIGNED PHASE	2	2	4	4	4			
OPERATION MODE	Veh	Veh	Veh	Veh	Veh			
SWITCH TO PHASE								
EXTEND			Yes					
DELAY			Yes					
DETECTOR CHANNEL	4	2	8	6	12	10	16	14
PLAN LOOP DETECTOR *(S)		23		43	45			
ASSIGNED PHASE		2		4	4			
OPERATION MODE		Veh		Veh	Veh			
SWITCH TO PHASE								
EXTEND								
DELAY								

RACK # 2								
DETECTOR CHANNEL	19	17	23	21	27	25	31	29
PLAN LOOP DETECTOR *(S)		61	62	64				
ASSIGNED PHASE		6	6	6				
OPERATION MODE		Veh	Veh	Veh				
SWITCH TO PHASE								
EXTEND								
DELAY								
DETECTOR CHANNEL	20	18	24	22	28	26	32	30
PLAN LOOP DETECTOR *(S)			63					
ASSIGNED PHASE			6					
OPERATION MODE			Veh					
SWITCH TO PHASE								
EXTEND								
DELAY								

Revision 3

STH 172 WB & CTH YY/Pilgrim Way
VILLAGE OF ASHWAUBENON
BROWN COUNTY

SIGNAL NO. 05-0488

CABINET: TS2 CONTROLLER: EPAC

DATE: PAGE NO. 2 OF 2