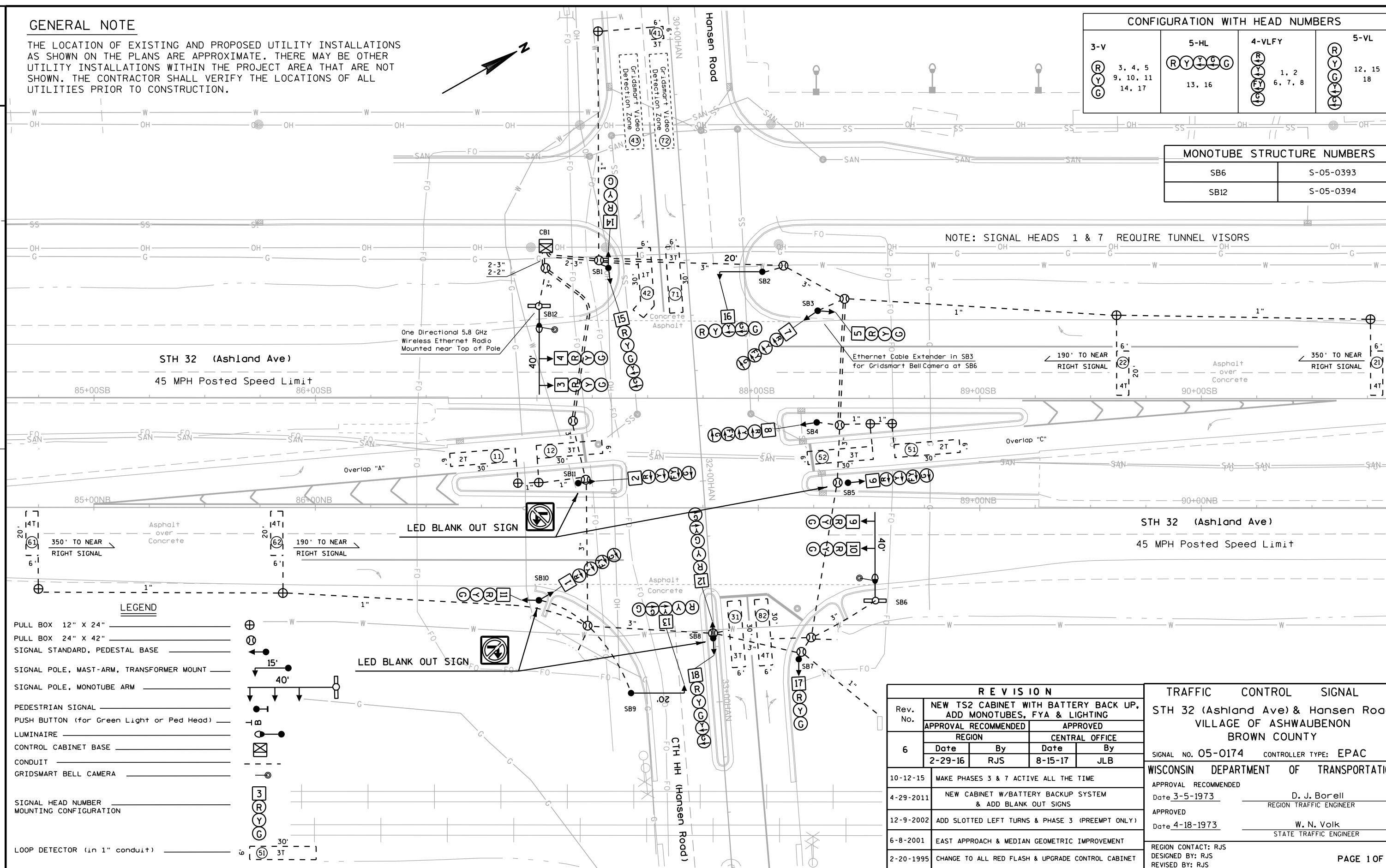


GENERAL NOTE

THE LOCATION OF EXISTING AND PROPOSED UTILITY INSTALLATIONS AS SHOWN ON THE PLANS ARE APPROXIMATE. THERE MAY BE OTHER UTILITY INSTALLATIONS WITHIN THE PROJECT AREA THAT ARE NOT SHOWN. THE CONTRACTOR SHALL VERIFY THE LOCATIONS OF ALL UTILITIES PRIOR TO CONSTRUCTION.



| CONFIGURATION WITH HEAD NUMBERS |                   |                   |                   |
|---------------------------------|-------------------|-------------------|-------------------|
| 3-V                             | 5-HL              | 4-VLFY            | 5-VL              |
| (R)<br>(Y)<br>(G)               | (R)<br>(Y)<br>(G) | (R)<br>(Y)<br>(G) | (R)<br>(Y)<br>(G) |
| 3, 4, 5<br>9, 10, 11<br>14, 17  | 13, 16            | 1, 2<br>6, 7, 8   | 12, 15<br>18      |

| MONOTUBE STRUCTURE NUMBERS |           |
|----------------------------|-----------|
| SB6                        | S-05-0393 |
| SB12                       | S-05-0394 |

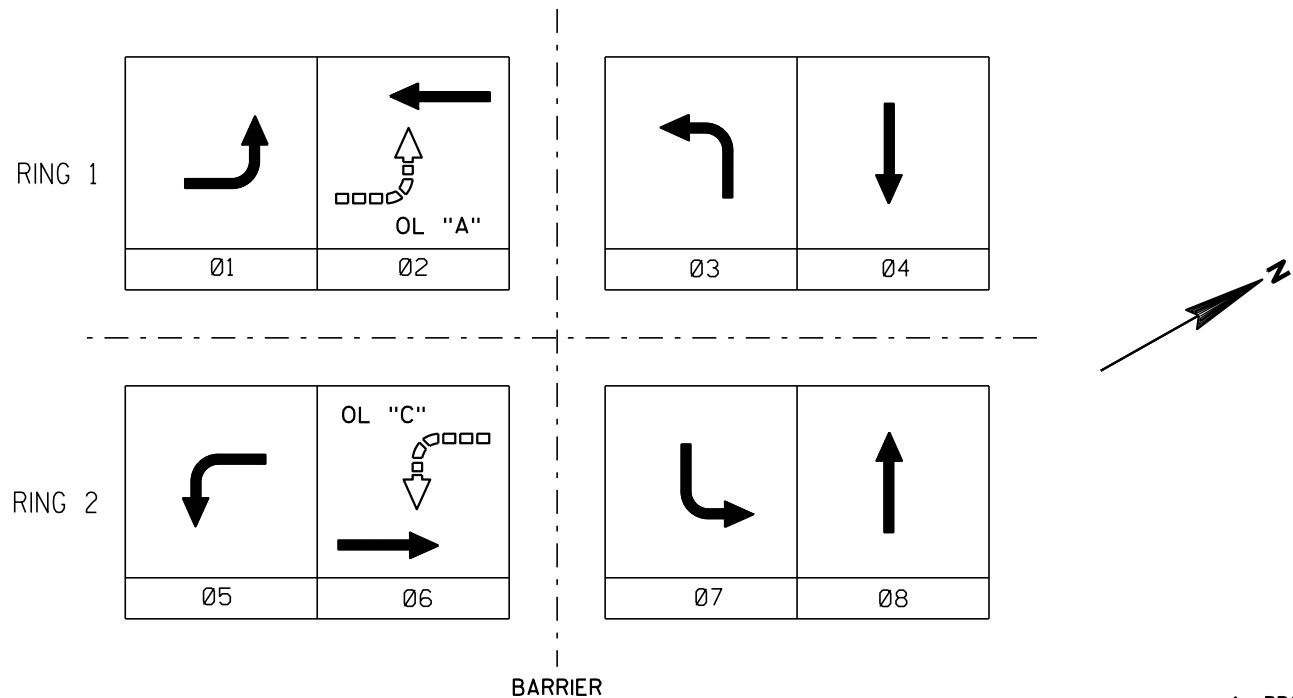
NOTE: SIGNAL HEADS 1 & 7 REQUIRE TUNNEL VISORS

| LEGEND                                    |  |
|---|--|
| PULL BOX 12" X 24"                        |  |
| PULL BOX 24" X 42"                        |  |
| SIGNAL STANDARD, PEDESTAL BASE            |  |
| SIGNAL POLE, MAST-ARM, TRANSFORMER MOUNT  |  |
| SIGNAL POLE, MONOTUBE ARM                 |  |
| PEDESTRIAN SIGNAL                         |  |
| PUSH BUTTON (for Green Light or Ped Head) |  |
| LUMINAIRE                                 |  |
| CONTROL CABINET BASE                      |  |
| CONDUIT                                   |  |
| GRIDSMArt BELL CAMERA                     |  |
| SIGNAL HEAD NUMBER                        |  |
| MOUNTING CONFIGURATION                    |  |
| LOOP DETECTOR (in 1" conduit)             |  |

| R E V I S I O N |   |                |             |
|-----------------|---|----------------|-------------|
| Rev. No.        | NEW TS2 CABINET WITH BATTERY BACK UP, ADD MONOTUBES, FYA & LIGHTING |                |             |
| 6               | APPROVAL RECOMMENDED  |                | APPROVED    |
|                 | REGION  | CENTRAL OFFICE |             |
|                 | Date  | By             | Date By     |
|                 | 2-29-16   | RJS            | 8-15-17 JLB |
| 10-12-15        | MAKE PHASES 3 & 7 ACTIVE ALL THE TIME                               |                |             |
| 4-29-2011       | NEW CABINET W/BATTERY BACKUP SYSTEM & ADD BLANK OUT SIGNS           |                |             |
| 12-9-2002       | ADD SLOTTED LEFT TURNS & PHASE 3 (PREEMPT ONLY)                     |                |             |
| 6-8-2001        | EAST APPROACH & MEDIAN GEOMETRIC IMPROVEMENT                        |                |             |
| 2-20-1995       | CHANGE TO ALL RED FLASH & UPGRADE CONTROL CABINET                   |                |             |

| TRAFFIC CONTROL SIGNAL                 |                         |
|--|-------------------------|
| STH 32 (Ashland Ave) & Hansen Road     |                         |
| VILLAGE OF ASHWAUBENON                 |                         |
| BROWN COUNTY                           |                         |
| SIGNAL NO. 05-0174                     | CONTROLLER TYPE: EPAC   |
| WISCONSIN DEPARTMENT OF TRANSPORTATION |                         |
| APPROVAL RECOMMENDED                   | D. J. Borell            |
| Date 3-5-1973                          | REGION TRAFFIC ENGINEER |
| APPROVED                               | W. N. Volk              |
| Date 4-18-1973                         | STATE TRAFFIC ENGINEER  |
| REGION CONTACT: RJS                    |                         |
| DESIGNED BY: RJS                       |                         |
| REVISED BY: RJS                        |                         |

|     | HEAD NUMBERS   | FLASH |
|-----|----------------|-------|
| Ø1  | 7, 8           | -     |
| Ø2  | 3, 4, 5        | R     |
| Ø3  | 15, 16, 18     | -     |
| Ø4  | 12, 13, 14     | R     |
| Ø5  | 1, 2, 6        | -     |
| Ø6  | 9, 10, 11      | R     |
| Ø7  | 12, 13         | -     |
| Ø8  | 15, 16, 17, 18 | R     |
| Ø2P |                |       |
| Ø4P |                |       |
| Ø6P |                |       |
| Ø8P |                |       |
| OLA | 7, 8           | R     |
| OLB |                |       |
| OLC | 1, 2, 6        | R     |
| OLD |                |       |



| PHASE NUMBER | PHASE LOCKING | DUAL ENTRY W / Ø | PHASE RECALL | PHASE ACTIVE |
|--------------|---------------|------------------|--------------|--------------|
| 1            |               |                  |              | YES          |
| 2            |               |                  | MIN          | YES          |
| 3            |               |                  |              | YES          |
| 4            |               | 8                |              | YES          |
| 5            |               |                  |              | YES          |
| 6            |               |                  | MIN          | YES          |
| 7            |               |                  |              | YES          |
| 8            |               | 4                |              | YES          |

| TYPE OF INTERCONNECT/COMMUNICATION |   |
|------------------------------------|---|
| CELL MODEM                         |   |
| CLOSED LOOP                        |   |
| TWISTED PAIR*                      |   |
| FIBER OPTIC*                       |   |
| FIBER OPTIC (ETHERNET)             |   |
| RADIO                              | x |

| TYPE OF COORDINATION               |           |
|------------------------------------|-----------|
| NONE                               |           |
| TBC                                | x         |
| TRAFFIC RESPONSIVE                 |           |
| ADAPTIVE                           |           |
| *LOCATION OF MASTER CONTROLLER NO: | S00-0000  |
| SIGNAL SYSTEM #:                   | SS00-0000 |

| TYPE OF LIGHTING                 |   |
|----------------------------------|---|
| BY OTHER AGENCY                  |   |
| IN TRAFFIC SIGNAL CABINET        | x |
| IN SEPARATE DOT LIGHTING CABINET |   |

| TYPE OF PRE-EMPT  |   |
|-------------------|---|
| NONE              |   |
| RAILROAD          | x |
| EMERGENCY VEHICLE |   |
| GTT               |   |
| TOMAR             |   |
| HARDWIRE          |   |
| 3M                |   |
| LIFT BRIDGE       |   |
| QUEUE DETECTOR    |   |

GENERAL NOTES:

1. PROVIDE FOR HAND CONTROL.
2. LED BLANK OUT SIGNS SHALL BE ILLUMINATED WHILE SIGNAL IS IN RR PREEMPTION, STARTING WHEN SIGNAL GETS TO TRACK GREEN.

DETECTOR LOGIC

| RACK # 1                |     |     |     |     |     |     |     |     |
|-------------------------|-----|-----|-----|-----|-----|-----|-----|-----|
| DETECTOR CHANNEL        | 3   | 1   | 7   | 5   | 11  | 9   | 15  | 13  |
| PLAN LOOP DETECTOR *(S) | 11  | 21  | 31  | 41  | 51  | 61  | 71  | 82  |
| ASSIGNED PHASE          | 1   | 2   | 3   | 4   | 5   | 6   | 7   | 8   |
| OPERATION MODE          | Veh | Veh | Veh | Veh | Veh | Veh | Veh | Veh |
| SWITCH TO PHASE         |     |     |     |     |     |     |     |     |
| EXTEND                  |     | Yes |     |     |     | Yes |     |     |
| DELAY                   |     |     |     | Yes |     |     | Yes | Yes |
| DETECTOR CHANNEL        | 4   | 2   | 8   | 6   | 12  | 10  | 16  | 14  |
| PLAN LOOP DETECTOR *(S) | 12  | 22  |     | 42  | 52  | 62  |     |     |
| ASSIGNED PHASE          | 1   | 2   |     | 4   | 5   | 6   |     |     |
| OPERATION MODE          | Veh | Veh |     | Veh | Veh | Veh |     |     |
| SWITCH TO PHASE         |     |     |     |     |     |     |     |     |
| EXTEND                  |     |     |     |     |     |     |     |     |
| DELAY                   |     |     |     | Yes |     |     |     |     |

| RACK # 2                |     |    |     |    |    |    |    |    |
|-------------------------|-----|----|-----|----|----|----|----|----|
| DETECTOR CHANNEL        | 19  | 17 | 23  | 21 | 27 | 25 | 31 | 29 |
| PLAN LOOP DETECTOR *(S) |     |    | 72  |    |    |    |    |    |
| ASSIGNED PHASE          |     |    | 7   |    |    |    |    |    |
| OPERATION MODE          |     |    | Veh |    |    |    |    |    |
| SWITCH TO PHASE         |     |    |     |    |    |    |    |    |
| EXTEND                  |     |    |     |    |    |    |    |    |
| DELAY                   |     |    | Yes |    |    |    |    |    |
| DETECTOR CHANNEL        | 20  | 18 | 24  | 22 | 28 | 26 | 32 | 30 |
| PLAN LOOP DETECTOR *(S) | 43  |    |     |    |    |    |    |    |
| ASSIGNED PHASE          | 4   |    |     |    |    |    |    |    |
| OPERATION MODE          | Veh |    |     |    |    |    |    |    |
| SWITCH TO PHASE         |     |    |     |    |    |    |    |    |
| EXTEND                  |     |    |     |    |    |    |    |    |
| DELAY                   | Yes |    |     |    |    |    |    |    |

OVERLAP SPECIAL

|        | Protected | Permissive |
|--------|-----------|------------|
| OL "A" | 1         | 2          |
| OL "B" |           |            |
| OL "C" | 5         | 6          |
| OL "D" |           |            |

Revision 6

STH 32 (Ashland Ave) & Hansen Road  
VILLAGE OF ASHWAUBENON  
BROWN COUNTY

SIGNAL NO. 05-0174

CABINET: TS2 CONTROLLER: EPAC

DATE: 8-15-2017 PAGE NO. 2 OF 2