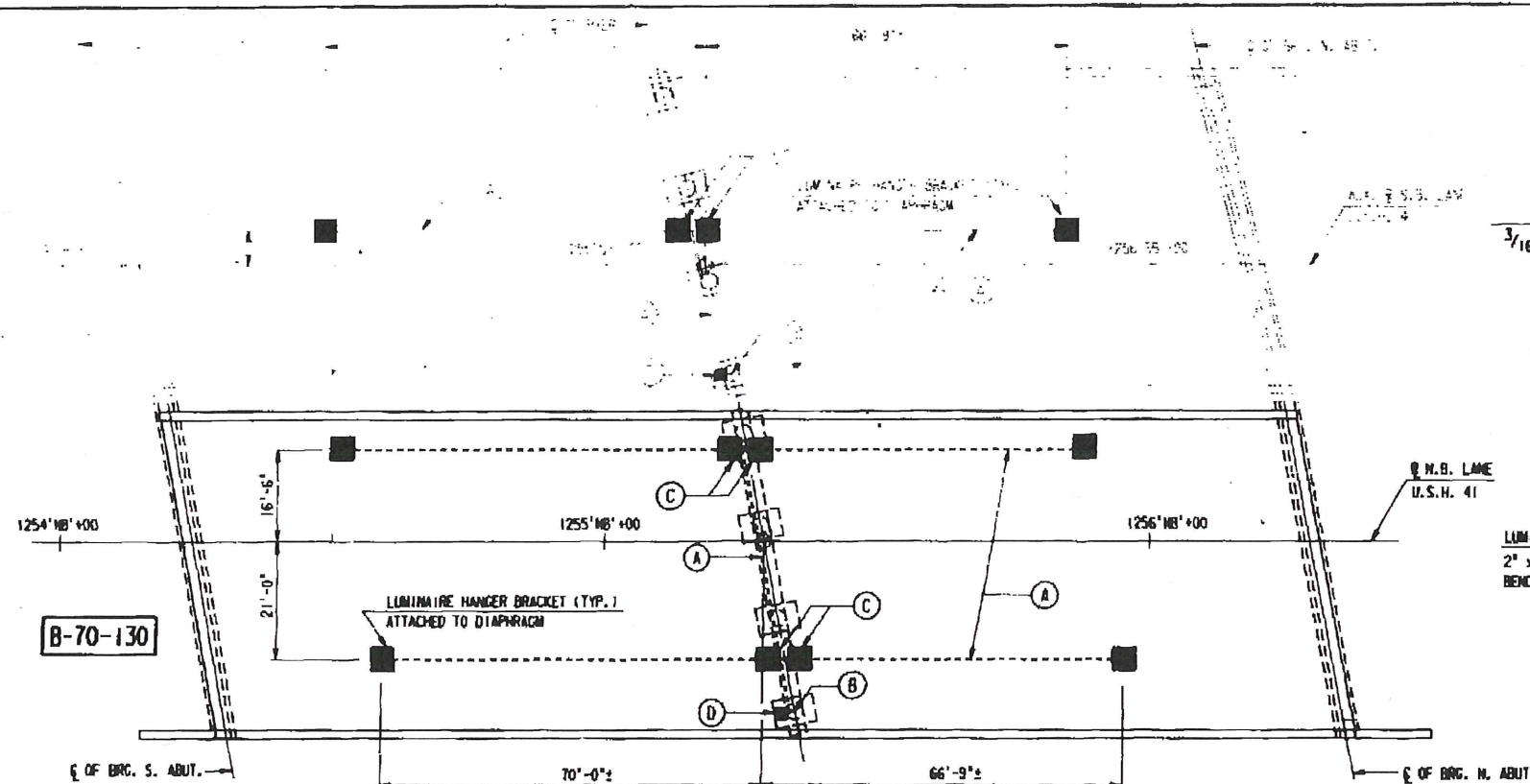


ESTIMATED ELECTRICAL WORK QUANTITIES

ITEM	UNIT	B-70-130
2" DIA. GALVANIZED RIGID METAL CONDUIT	L.F.	25
1" DIA. GALVANIZED RIGID METAL CONDUIT	L.F.	360
1" DIA. FLEXIBLE CONDUIT	—	AS REQ'D.
1" DIA. CONDUIT CLAMPS	—	AS REQ'D.
TYPE "L" CONDUIT	EACH	8
5 AMP IN-LINE FUSE ASSEMBLY	EACH	1
A.W.G. #12 STRANDED R.H.W. WIRE	L.F.	AS REQ'D.
MOUNTING BRACKET	EACH	4
LUMINAIRE HANGER BRACKET	EACH	8
METAL 04-04-04 JUNCTION BOX	EACH	4
METAL 08-08-08 JUNCTION BOX	EACH	1
100 W MPS LUMINAIRES	EACH	8

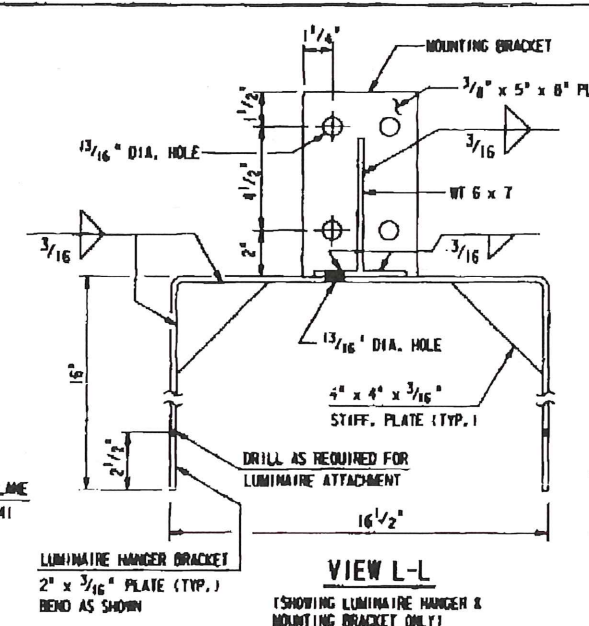
★ JUNCTION BOXES SHALL HAVE WATER-TIGHT COVERS.
 ★ LUMINAIRES SHALL BE PROVIDED WITH PHOTOCELLS



UNDERDECK LIGHTING PLAN

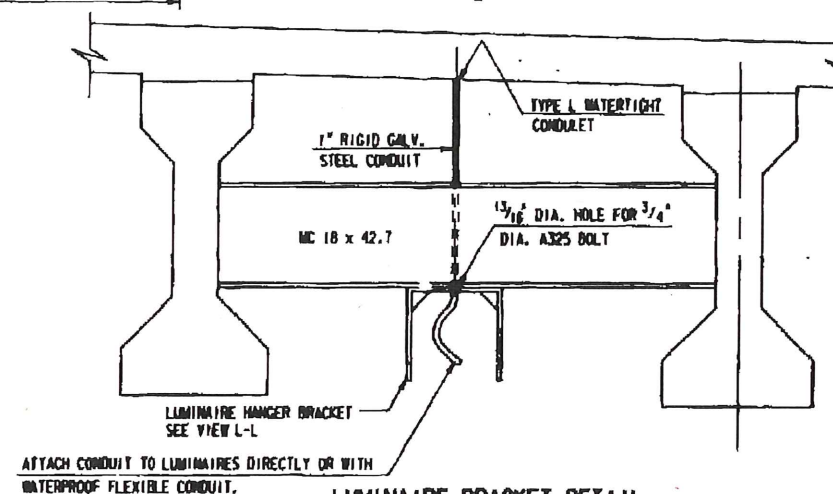
LEGEND

- (A) 1" DIA. GALV. RIGID STEEL CONDUIT
 (B) 2" DIA. GALV. RIGID STEEL CONDUIT
 (C) 4" x 4" x 4" JUNCTION BOX
 (D) 8" x 8" x 6" JUNCTION BOX (PLACE 5 AMP IN-LINE FUSE ASSEMBLY IN JUNCTION BOX.)



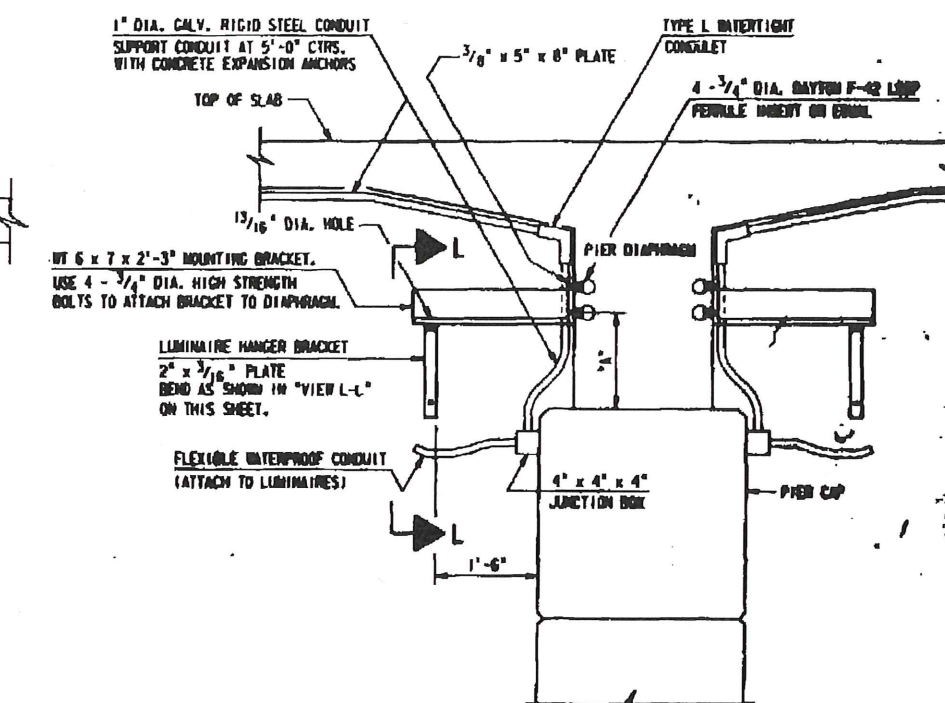
VIEW L-L

(SHOWING LUMINAIRE HANGER & MOUNTING BRACKET ONLY)

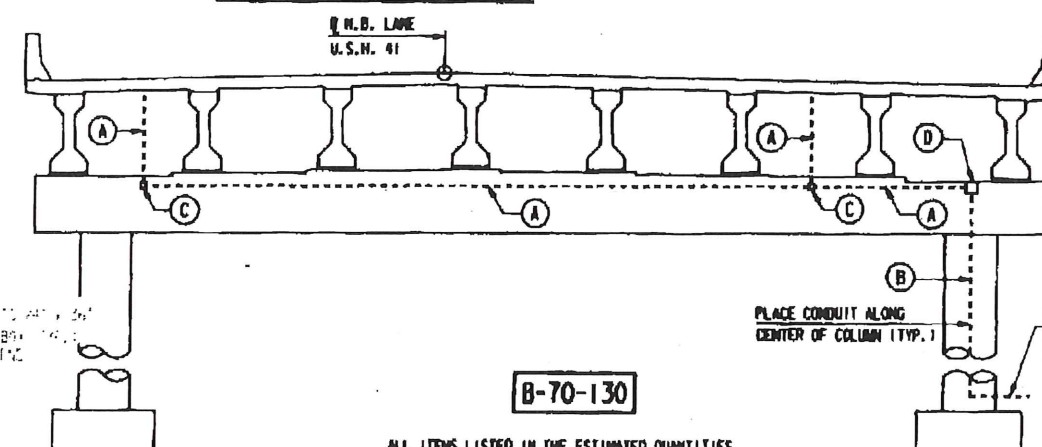


LUMINAIRE BRACKET DETAIL

ATTACH CONDUIT TO LUMINAIRE DIRECTLY OR WITH WATERPROOF FLEXIBLE CONDUIT.



DIMENSION "A" TO BE DETERMINED BY THE ENGINEER IN THE FIELD.
 LIGHTING DETAILS AT PIER

CROSS SECTION THRU ROADWAY
(LOOKING NORTH)

ALL ITEMS LISTED IN THE ESTIMATED QUANTITIES SHALL BE INCLUDED IN THE BID ITEM "ELECTRICAL WORK, B-70-130".

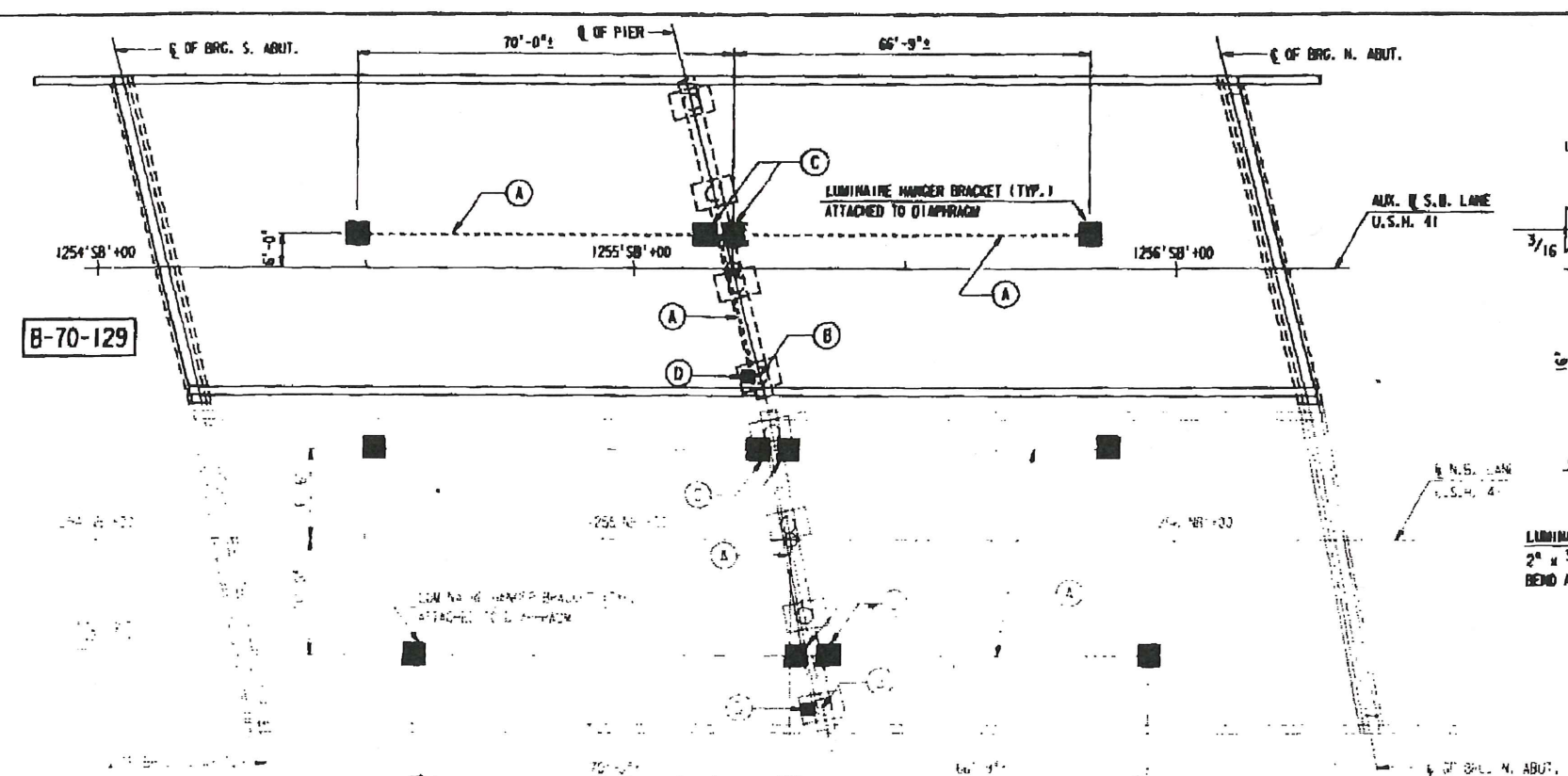
OUTDATED

No.	Date	Revision	By
STATE OF WISCONSIN DEPARTMENT OF TRANSPORTATION			
STRUCTURE B-70-130			
Const. Spec.	WIS. 1989	Drawn By	T.A.B.
		Photo Checked	LEN
UNDERDECK LIGHTING DETAILS			SHEET 20 OF 20

ESTIMATED ELECTRICAL WORK QUANTITIES

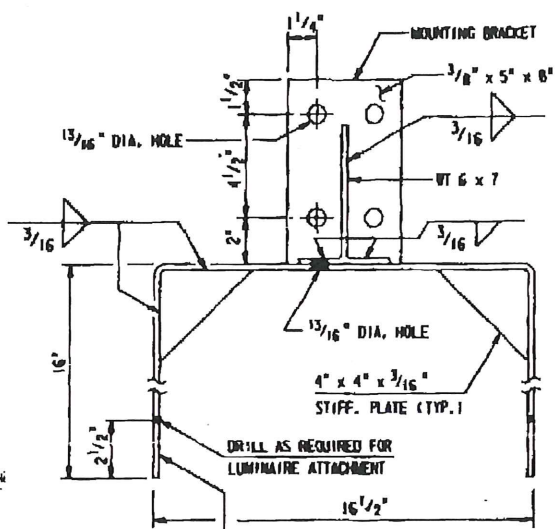
ITEM	UNIT	B-70-129
2" DIA. GALVANIZED RIGID METAL CONDUIT	L.F.	25
1" DIA. GALVANIZED RIGID METAL CONDUIT	L.F.	100
1" DIA. FLEXIBLE CONDUIT	—	AS REQ'D.
1" DIA. CONDUIT CLAMPS	—	AS REQ'D.
TYPE "L" CONDUIT	EACH	4
5 AMP INLINE FUSE ASSEMBLY	EACH	1
A.W.G. #12 STRANDED R.H.V. WIRE	L.F.	AS REQ'D.
MOUNTING BRACKET	EACH	2
LUMINAIRE HANGER BRACKET	EACH	4
METAL 04-04-04 JUNCTION BOX	EACH	2
METAL 08-08-08 JUNCTION BOX	EACH	1
100 W NPS LUMINAIRES	EACH	4

★ JUNCTION BOXES SHALL HAVE WATERPROOF COVERS.
 ✱ LUMINAIRES SHALL BE PROVIDED WITH PHOTOCELLS

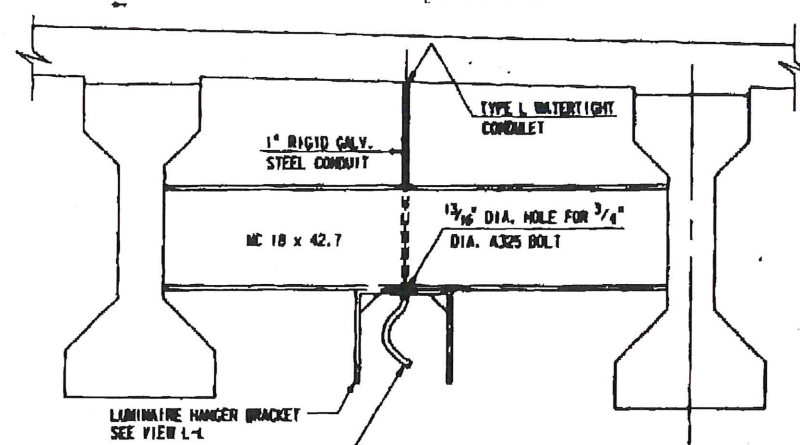


UNDERDECK LIGHTING PLAN

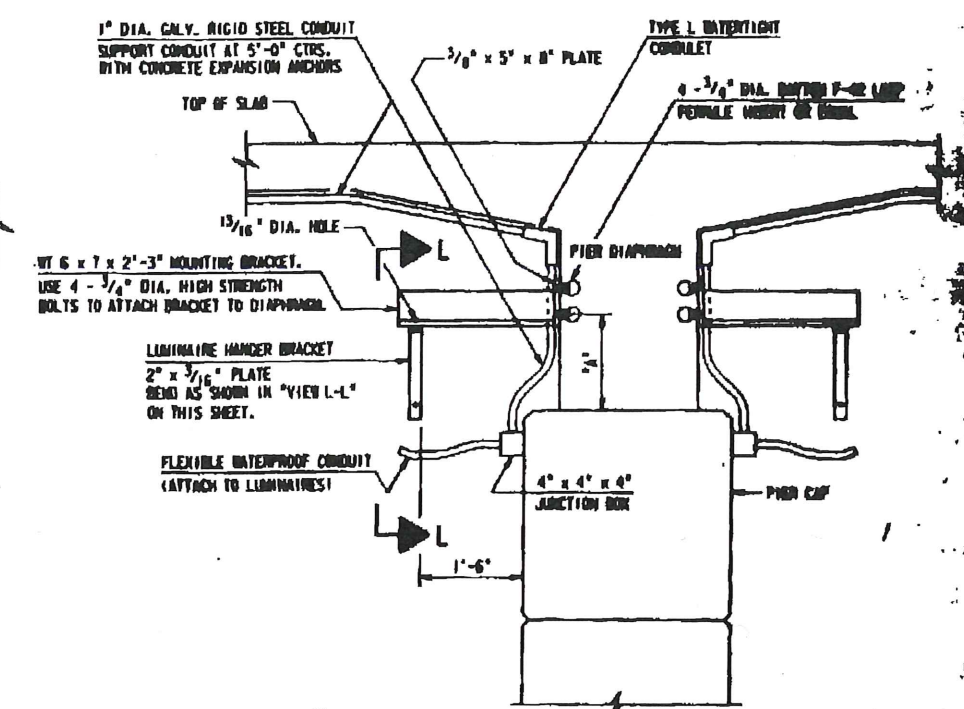
- LEGEND**
- (A) 1" DIA. GALV. RIGID STEEL CONDUIT
 - (B) 2" DIA. GALV. RIGID STEEL CONDUIT
 - (C) 4" x 4" x 4" JUNCTION BOX
 - (D) 8" x 8" x 6" JUNCTION BOX (PLACE 5 AMP INLINE FUSE ASSEMBLY IN JUNCTION BOX.)



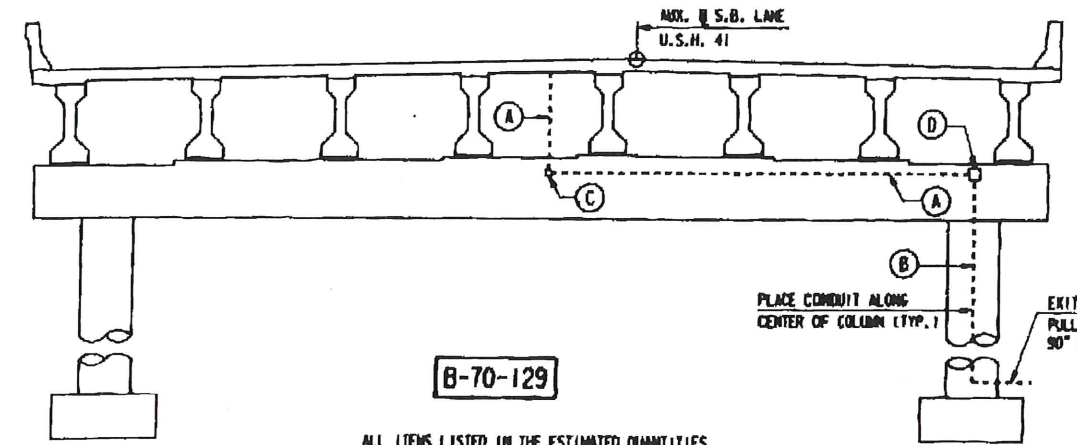
VIEW L-L
(SHOWING LUMINAIRE HANGER & MOUNTING BRACKET ONLY)



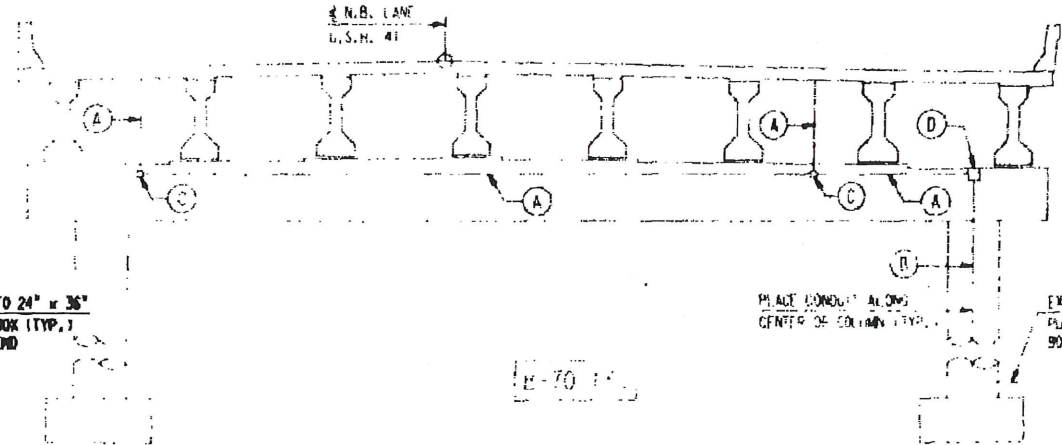
LUMINAIRE BRACKET DETAIL



DIMENSION "A" TO BE DETERMINED BY THE ENGINEER IN THE FIELD.
 LIGHTING DETAILS AT PIER



CROSS SECTION THRU ROADWAY
(LOOKING NORTH)



ALL ITEMS LISTED IN THE ESTIMATED QUANTITIES SHALL BE INCLUDED IN THE BID ITEM "ELECTRICAL WORK, B-70-129".

No.	Date	Revision	By
STATE OF OREGON DEPARTMENT OF TRANSPORTATION			
STRUCTURE B-70-129			
Drawn By	WIS. 1989	From By	T.A.V.
Spec.		Plan	LEN
UNDERDECK LIGHTING DETAILS			SHEET 20 OF 20

SEE 100% SUBMITTALS FOR ALL DIMENSIONS AND MATERIALS. ALL DIMENSIONS ARE TO FACE UNLESS OTHERWISE NOTED. ALL MATERIALS SHALL BE AS SHOWN ON THE DRAWINGS. ALL WORK SHALL BE IN ACCORDANCE WITH THE LATEST EDITIONS OF THE STANDARD SPECIFICATIONS FOR HIGHWAY CONSTRUCTION, 1989 EDITION, AND THE LATEST EDITIONS OF THE STANDARD SPECIFICATIONS FOR BRIDGE CONSTRUCTION, 1989 EDITION.