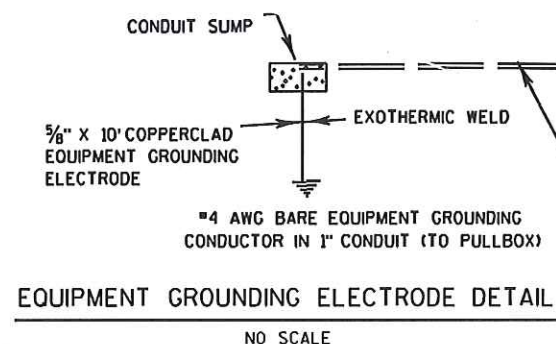


TYPICAL LUMINAIRE MOUNTING ON RETAINING WALLS  
NO SCALE



Circuit "A"

"B"

"C"

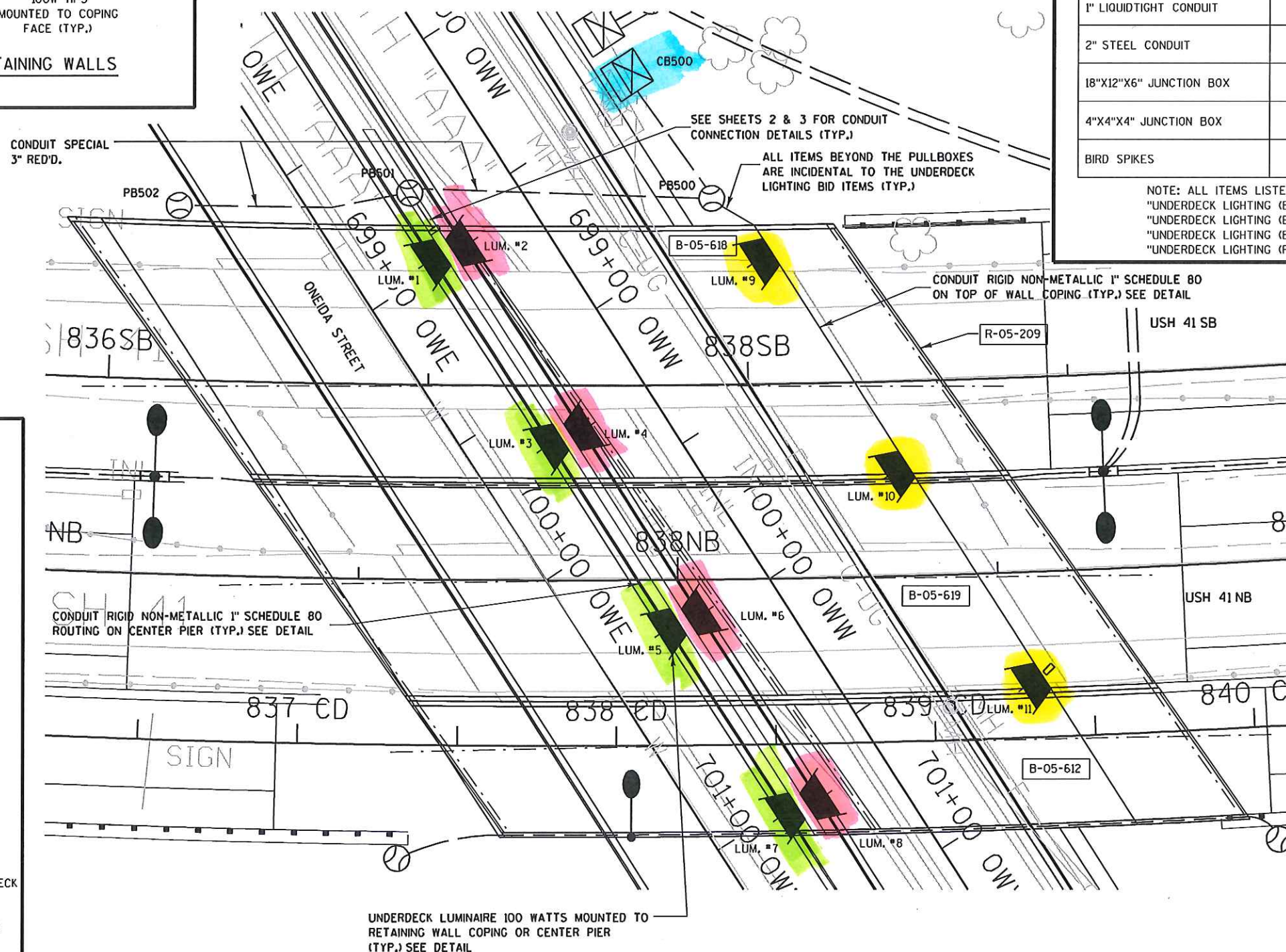


## MAJOR QUANTITIES - UNDERDECK LIGHTING

	R-05-209	B-05-612	B-05-618	B-05-619
ELECTRICAL WIRE LIGHTING 12 AWG.	600 LF	325 LF	700 LF	550 LF
EQUIPMENT GROUNDING ELECTRODE	1 EA	---	1 EA	---
1" STEEL CONDUIT	20 LF	100 LF	200 LF	160 LF
1" SCHEDULE 80 CONDUIT	175 EA	---	---	---
1/2" LIQUIDTIGHT CONDUIT	6 LF	4 LF	8 LF	4 LF
1" LIQUIDTIGHT CONDUIT	---	---	4 LF	4 LF
2" STEEL CONDUIT	15 LF	---	65 LF	---
18"x12"x6" JUNCTION BOX	1 EA	---	4 EA	---
4"x4"x4" JUNCTION BOX	3 EA	2 EA	4 EA	2 EA
BIRD SPIKES	1 LS	1 LS	1 LS	1 LS

NOTE: ALL ITEMS LISTED ABOVE ARE TO BE PAID FOR UNDER  
 "UNDERDECK LIGHTING (B-05-612)" BID ITEM 659.0600.XXX (L.S.)  
 "UNDERDECK LIGHTING (B-05-618)" BID ITEM 659.0600.XXX (L.S.)  
 "UNDERDECK LIGHTING (B-05-619)" BID ITEM 659.0600.XXX (L.S.) AND  
 "UNDERDECK LIGHTING (R-05-209)" BID ITEM 659.0600.XXX (L.S.)

Change Order to LED



240 VOLT SYSTEM

CB500 ELECTRIC  
 SERVICE FEED COMES  
 FROM S-400 METER  
 BREAKER PEDESTAL

L-839  
 41 ONEIDA

Page 1 of 3

SHEET 36 OF 44

## NOTES:

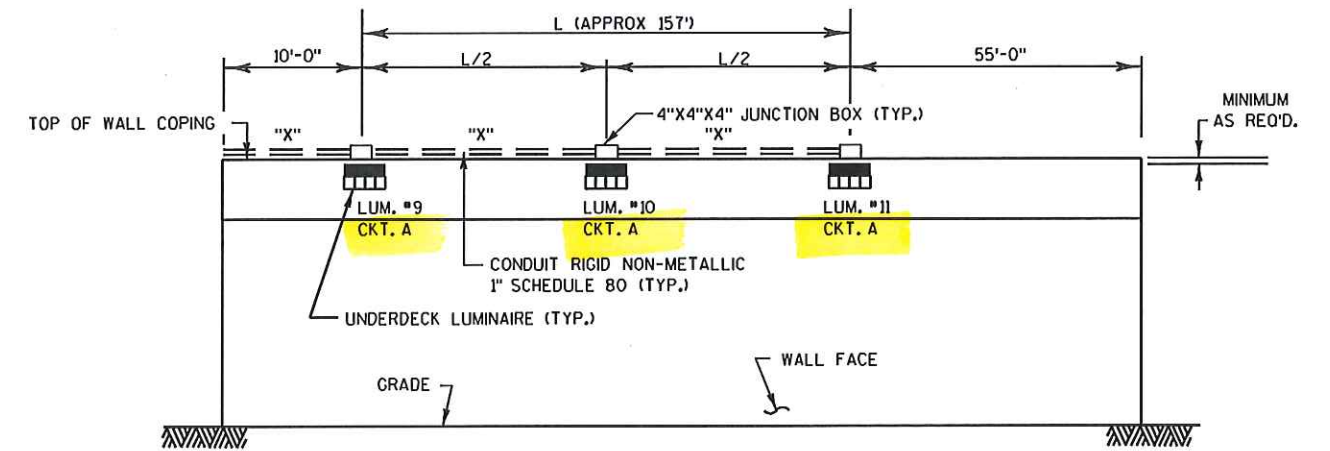
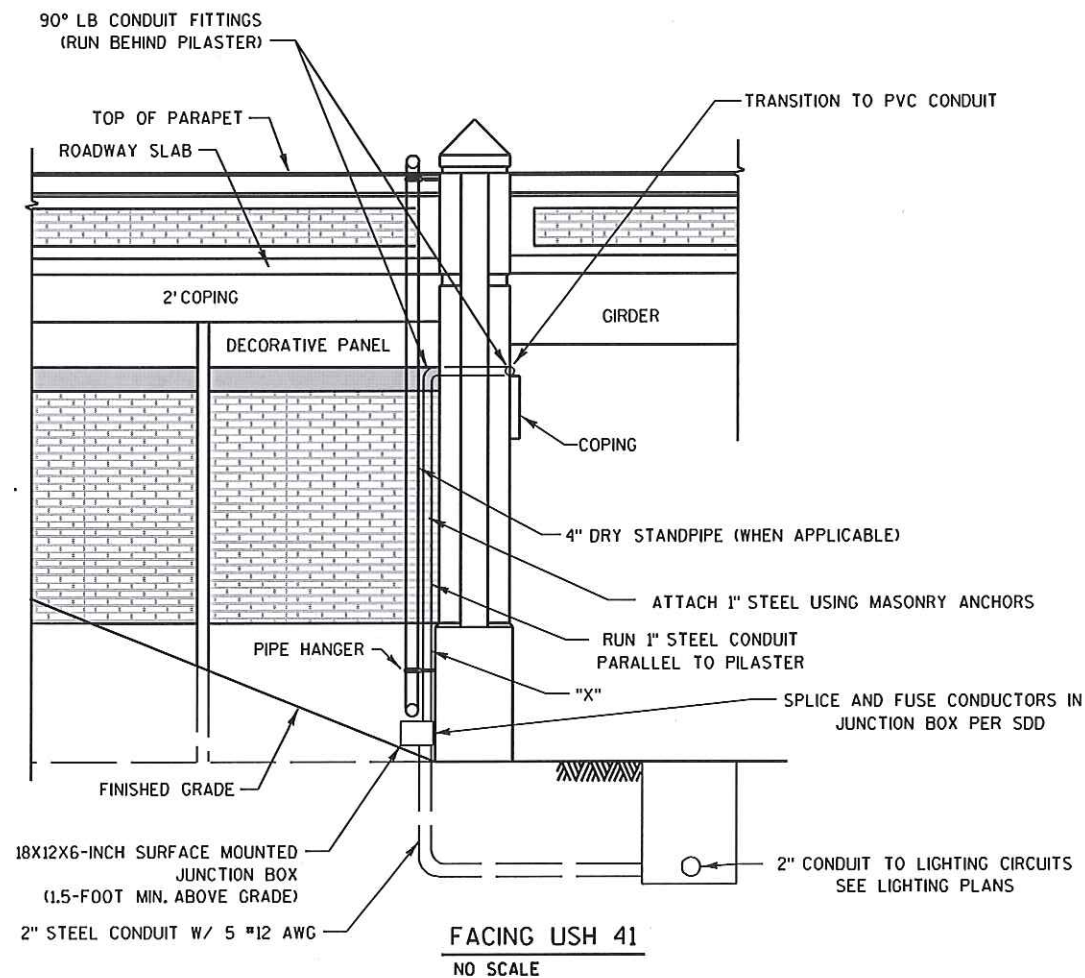
- 1) SEE STRUCTURE PLANS FOR ADDITIONAL INFORMATION.
- 2) ALL WORK MUST CONFORM TO THE NATIONAL ELECTRIC CODE.
- 3) REFER TO STANDARD DETAIL DRAWING "ELECTRICAL DETAILS UNDERDECK LIGHTING" FOR ADDITIONAL INFORMATION NOT SHOWN ON THIS DETAIL.
- 4) ALL CONDUIT, BOXES AND FITTINGS SHALL BE RATED WATERTIGHT.
- 5) UNDERDECK LIGHT CIRCUITS SHALL BE 240 VAC. WIRING SHALL BE 12 AWG MIN.
- 6) LUMINAIRES ON THE NORTH SIDE ON THE CENTER PIER OF B-05-612, B-05-618 AND B-05-619 SHALL BE ON CIRCUIT B WHILE LUMINAIRES ON THE SOUTH SIDE OF THE CENTER PIERS SHALL BE ON CIRCUIT C. LUMINAIRES ON WALL R-05-209 SHALL BE ON CIRCUIT A.
- 7) STREET LIGHTING SYSTEM IS NOT SHOWN ON THIS SHEET.
- 8) LUMINAIRE SHALL BE BLACK IN COLOR AND FEATURE A WIRE VANDAL GUARD. FURNISH AND INSTALL STAINLESS STEEL BIRD SPIKES AS SHOWN. VANDAL GUARDS AND BIRD SPIKES SHALL BE INCIDENTAL TO THE UNDERDECK LIGHTING BID ITEM.
- 9) ALL WIRING FROM JUNCTION BOXES IS INCLUDED IN THE UNDERDECK LIGHTING ITEM.
- 10) ATTACH BIRD SPIKES WITH REMOVABLE FASTENERS FOR FUTURE MAINTENANCE ACCESS TO JUNCTION BOXES & LUMINAIRES.

UNDERDECK LUMINAIRE 100 WATTS MOUNTED TO  
 RETAINING WALL COPING OR CENTER PIER  
 (TYP.) SEE DETAIL



## WIRING LEGEND

"X" = 3 - #12 AWG  
CKT = CIRCUIT

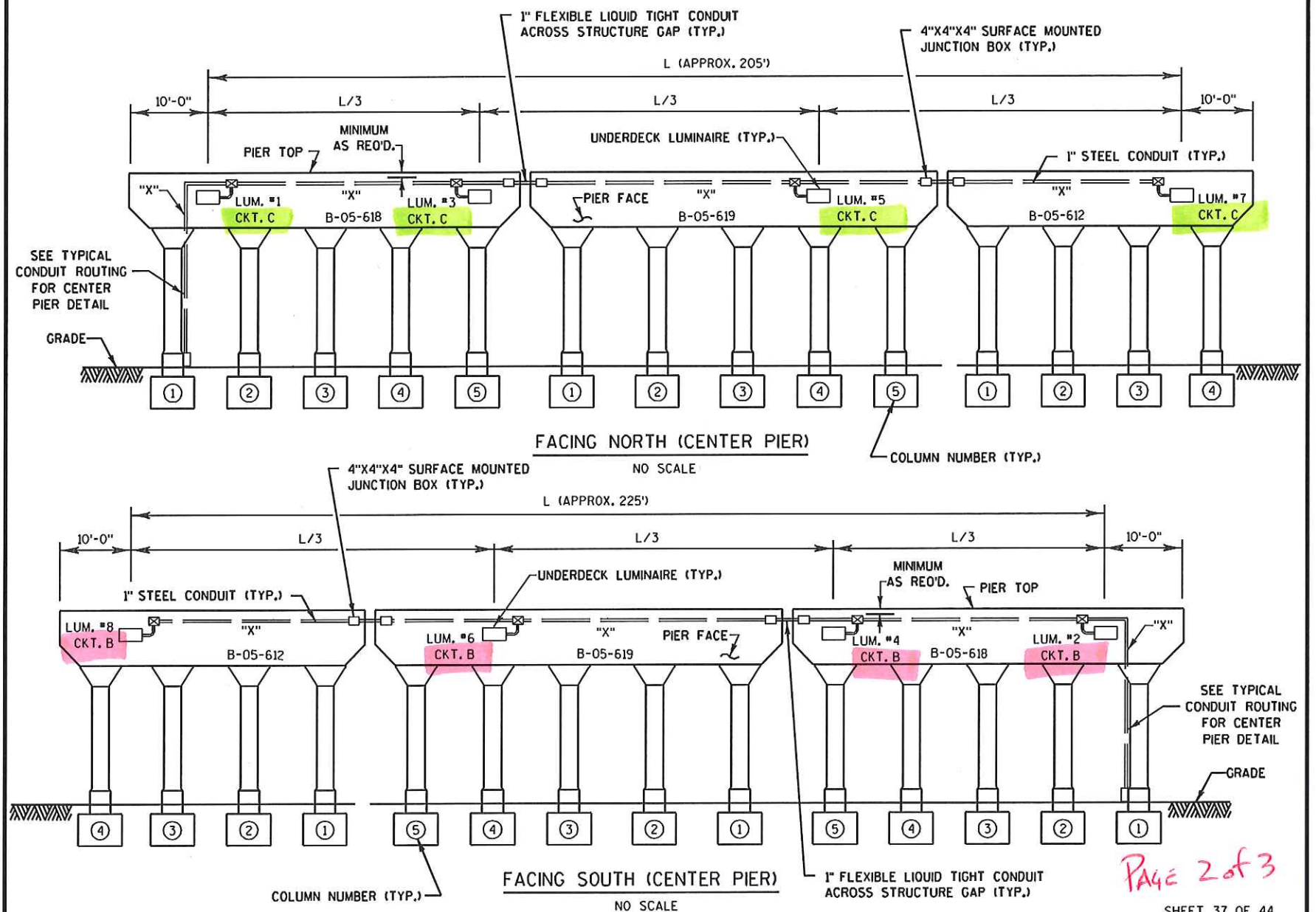


## NOTE:

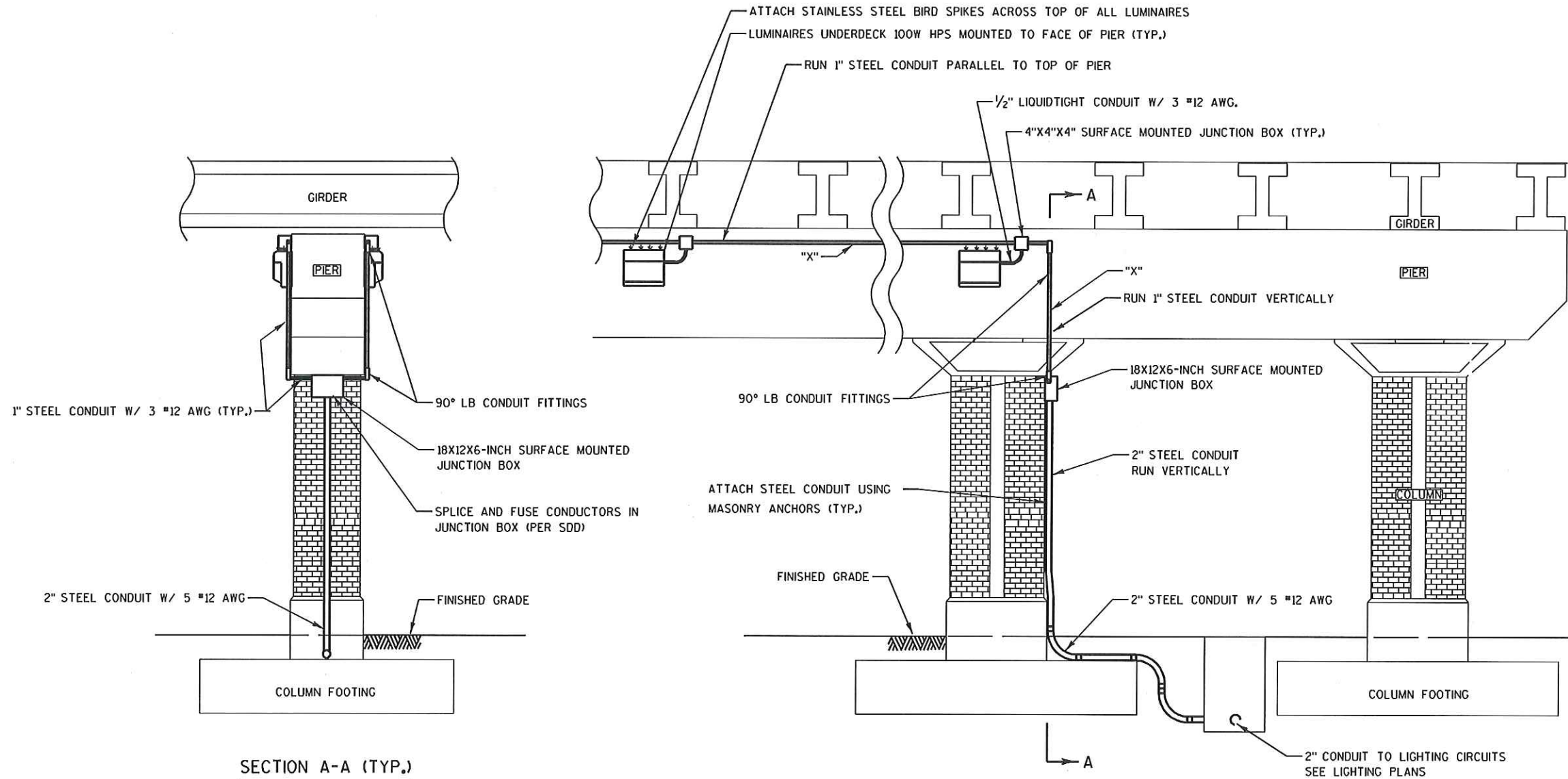
ENSURE LUMINAIRE MOUNTING BOXES ARE NOT PLACED BELOW THE GAP BETWEEN STRUCTURES

FACING NORTH ABUTMENT

NO SCALE



PAGE 2 of 3  
SHEET 37 OF 44



TYPICAL CONDUIT ROUTING FOR CENTER PIER (TYP.)

NO SCALE

PAGE 3 of 3

SHEET 38 OF 44